



**DEPARTMENT OF NATURAL RESOURCES  
STATE OF MICHIGAN  
TIMBER SALE PROSPECTUS #7534**

SCHEDULED SALE DATE AND TIME: 10:00 a.m. (local time) on January 21, 2025.

LOCATION: ATLANTA MGMT UNIT, 13501 M 33, ATLANTA, MI 49709.

CONTACT NAME: Matt Foster

PHONE NUMBER: (989) 619-5921

PROSPECTUS NOTE: The bidder is advised to inspect the sale area and review the location, estimated volumes, operating costs and contract terms of proposed sales. Please be aware that some landowners may request 60 days or more notice for access across their land.

Notice is hereby given that bids will be received by the Unit Manager, ATLANTA MANAGEMENT UNIT, for certain timber on the following described lands:

Big Rock Mix (54-018-23) / T32N, R03E, SEC. 6 , NWNW.

T32N, R03E, SEC. 7 , E1/2NW,N1/2NE,SWNE,E1/2SW,SE.

T32N, R03E, SEC. 8 , SWSW.

Montmorency County, Advertised Price \$143,682.50, 176.2 Acres, Aspen, Hardwood.

SALE NOTE: 5.2.3.4 - Oak wilt restriction, no exceptions, 5.2.3.11 - Coppice regeneration protection, 5.8.8 - Protected species, other: Within Payment Unit 8, no harvesting activities shall occur during the time period of April 1 to October 15.

A recreation site such as a trail, pathway, or campground is within the sale area or the vicinity. Certain restrictions/specifications may be applicable including time restrictions.

# TIMBER SALE INFORMATION

## Big Rock Mix (54-018-23)

T32N, R03E, SEC. 6; T32N, R03E, SEC. 7; T32N, R03E, SEC. 8.

Montmorency County (Advertised Price \$143,682.50)

SALE NOTE: 5.2.3.4 - Oak wilt restriction, no exceptions, 5.2.3.11 - Coppice regeneration protection, 5.8.8 - Protected species, other: Within Payment Unit 8, no harvesting activities shall occur during the time period of April 1 to October 15.

A recreation site such as a trail, pathway, or campground is within the sale area or the vicinity. Certain restrictions/specifications may be applicable including time restrictions.

A timber sale contract for this lump sum, sealed bid timber sale will be awarded to the responsible bidder offering the highest sealed bid price. All units of volume listed below were estimated using the Inventory Manager computer program and the new Michigan taper model. Bids must be at or above the following advertised price for each product and species:

<u>PRODUCTS &amp; SPECIES</u>	<u>ESTIMATED UNITS*</u>	<u>ADVERTISED PRICE</u>
<b>Sawtimber</b>		
Black/Red (Hybrid) Oak	58.6 MBF	\$ 98.00 / MBF
Mixed Aspen	100.9 MBF	\$ 84.00 / MBF
Red Maple	19.8 MBF	\$ 60.00 / MBF
Red Oak	154.6 MBF	\$ 180.00 / MBF
Red Pine	175.0 MBF	\$ 128.00 / MBF
White Oak	47.2 MBF	\$ 70.00 / MBF
White Pine	12.3 MBF	\$ 97.00 / MBF
<b>Pulpwood</b>		
Balsam Fir	128 Cords	\$ 17.05 / Cord
Black Spruce	2 Cords	\$ 13.10 / Cord
Jack Pine	5 Cords	\$ 12.50 / Cord
Mixed Aspen	1,697 Cords	\$ 20.35 / Cord
Mixed Hardwood	472 Cords	\$ 20.70 / Cord
Mixed Oak	638 Cords	\$ 25.00 / Cord
Red Pine	243 Cords	\$ 37.25 / Cord
White Pine	71 Cords	\$ 27.80 / Cord

\* The total volume is statistically estimated within plus (+) or minus (-) 9.18 percent. There are an estimated 4,690 cords on this timber sale, plus or minus 431 cords at the 95% confidence level. The estimated units are final and not subject to adjustment. Prospective bidders are urged to examine this timber and to make their own estimates of quantity and quality.

### **BOND AND PAYMENT SCHEDULE:**

1. A bond in the amount of \$7,184.13 to insure faithful performance of the conditions of the contract will be deposited by the successful bidder within 21 days of the sale award.
2. Cutting in any sale or unit without the required advance payment would be considered a trespass.
3. Total payment must be paid in advance or according to the following schedule :
  - (a) Ten percent (10%) of the sale value must be paid within 21 days of the sale award.
  - (b) The 10% down payment will be credited towards the first unit cut.
  - (c) Payment for each of the following units must be made before cutting begins in that unit:
 

PAYMENT UNIT NUMBER	PERCENT OF TOTAL SALE VALUE
01	2.8%
02	11.0%
03	10.3%
04	11.9%
05	19.1%
06	16.0%
07	17.6%
08	11.3%
4. If no cutting takes place, the 10% down payment will not be refunded.
5. Operations on the contract issued will terminate on 06/30/2028.

### **SALE STATISTICS**

Volumes were calculated in cubic feet using the Michigan taper model. Cubic foot volume includes all wood inside bark for the product indicated. For display purposes, cubic feet were converted to cords and MBF using a simple conversion factor, e.g. 79 cubic feet per cord and 185 cubic feet per MBF. The cubic foot volumes are precise; the cords and MBF volumes are not. Cubic foot volume cannot be directly converted to cords or boards with precision.

### SALE VOLUMES

The total estimated sale volume may not equal the sum of the species/products due to the nature of statistical calculations associated with double sampling methodology.

VOLUME			STATISTICAL RANGE IN CORDS	
TOTAL CUBIC FEET	TOTAL CORDS	PERCENT ERROR	MINIMUM	MAXIMUM
370,535	4,690	9.18%	4,260	5,121

### VDU VOLUMES

A VDU is a Volume Determination Unit. Volumes and their associated statistics are calculated at the VDU level and summarized to the sale level. There is often a one to one relationship between a VDU and a Payment Unit, but not always, depending on the cruise design. Refer to the VDU TO PAYMENT UNIT table.

VDU	VOLUME		PERCENT ERROR	RANGE IN CORDS	
	TOTAL CUBIC FEET	TOTAL CORDS		MINIMUM	MAXIMUM
1	10,237	130	18.79%	105	154
46	59,589	754	21.18%	595	914
50	39,427	499	27.81%	360	638
53	53,852	682	27.17%	496	867
79	9,810	124	63.04%	46	202
134	197,619	2,502	14.74%	2,133	2,870
<b>TOTAL:</b>	<b>370,535</b>	<b>4,690</b>		<b>3,735</b>	<b>5,645</b>

### VDU TO PAYMENT UNIT

When a VDU is associated with more than one Payment Unit (PU), the VDU volumes are assigned to the PU based on acres of the VDU within the PU.

VDU	VDU ACRES	PU	PU ACRES
1	5.4	1	5.4
46	30.3	5	10.5
46	30.3	7	19.8
50	14.1	6	14.1
53	26.4	7	3.5
53	26.4	8	22.9
79	4.3	6	4.3
134	95.7	2	21.5
134	95.7	3	20.1
134	95.7	4	23.2
134	95.7	5	24.4
134	95.7	7	6.5
<b>TOTAL:</b>	<b>615.7</b>		<b>176.2</b>

**DESCRIPTION OF TIMBER BY PU (PU)**

PU	MARKET GROUP	PRODUCT	QUANTITY	UNIT	ACRES	ADVERTISE PRICE
1	Black/Red (Hybrid <i>Northern Pin Oak</i> Red Maple Red Oak Jack Pine Mixed Hardwood <i>Red Maple</i> Mixed Oak <i>Northern Pin Oak</i> <i>Red Oak</i>	Sawtimber	15.8	MBF	5.4	\$3,995.00
			15.8	<i>MBF</i>		
		0.6	MBF			
		2.8	MBF			
		5	Cords			
		13	Cords			
		13	<i>Cords</i>			
		63	Cords			
		60	<i>Cords</i>			
		3	<i>Cords</i>			
2	Black/Red (Hybrid <i>/Red (Hybrid) Oak</i> Mixed Aspen <i>B. T. Aspen</i> <i>Quaking Aspen</i> Red Oak Red Pine White Oak Balsam Fir <i>Balsam Fir</i> Mixed Aspen <i>B. T. Aspen</i> <i>Quaking Aspen</i> Mixed Hardwood <i>Red Maple</i> Mixed Oak <i>/Red (Hybrid) Oak</i> <i>Red Oak</i> <i>White Oak</i> Red Pine White Pine	Sawtimber	6.2	MBF	21.5	\$15,796.45
			6.2	<i>MBF</i>		
		15.6	MBF			
		15.3	<i>MBF</i>			
		0.3	<i>MBF</i>			
		10.3	MBF			
		19.9	MBF			
		4.9	MBF			
		6	Cords			
		6	<i>Cords</i>			
		267	Cords			
		245	<i>Cords</i>			
		22	<i>Cords</i>			
		33	Cords			
		33	<i>Cords</i>			
		66	Cords			
		25	<i>Cords</i>			
		29	<i>Cords</i>			
		12	<i>Cords</i>			
		28	Cords			
8	Cords					
3	Black/Red (Hybrid <i>/Red (Hybrid) Oak</i> Mixed Aspen <i>B. T. Aspen</i> <i>Quaking Aspen</i> Red Oak Red Pine White Oak Balsam Fir <i>Balsam Fir</i> Mixed Aspen <i>B. T. Aspen</i> <i>Quaking Aspen</i> Mixed Hardwood <i>Red Maple</i> Mixed Oak <i>/Red (Hybrid) Oak</i> <i>Red Oak</i> <i>White Oak</i> Red Pine White Pine	Sawtimber	5.8	MBF	20.1	\$14,780.95
			5.8	<i>MBF</i>		
		14.6	MBF			
		14.3	<i>MBF</i>			
		0.3	<i>MBF</i>			
		9.6	MBF			
		18.6	MBF			
		4.6	MBF			
		5	Cords			
		5	<i>Cords</i>			
		250	Cords			
		229	<i>Cords</i>			
		21	<i>Cords</i>			
		31	Cords			
		31	<i>Cords</i>			
		62	Cords			
		23	<i>Cords</i>			
		28	<i>Cords</i>			
		11	<i>Cords</i>			
		26	Cords			
8	Cords					
4	Black/Red (Hybrid <i>/Red (Hybrid) Oak</i> Mixed Aspen	Sawtimber	6.6	MBF	23.2	\$17,092.25
			6.6	<i>MBF</i>		
			16.8	MBF		

**DESCRIPTION OF TIMBER BY PU (PU), CON'T**

PU	MARKET GROUP	PRODUCT	QUANTITY	UNIT	ACRES	ADVERTISE PRICE
4 con't	<i>B. T. Aspen</i>	<i>Sawtimber</i>	16.5	<i>MBF</i>		
	<i>Quaking Aspen</i>		0.3	<i>MBF</i>		
	Red Oak		11.1	MBF		
	Red Pine		21.5	MBF		
	White Oak		5.3	MBF		
	Balsam Fir	Pulpwood	6	Cords		
	<i>Balsam Fir</i>		6	<i>Cords</i>		
	Mixed Aspen		288	Cords		
	<i>B. T. Aspen</i>		264	<i>Cords</i>		
	<i>Quaking Aspen</i>		24	<i>Cords</i>		
	Mixed Hardwood		36	Cords		
	<i>Red Maple</i>		36	<i>Cords</i>		
	Mixed Oak		72	Cords		
	<i>/Red (Hybrid) Oak</i>		27	<i>Cords</i>		
	<i>Red Oak</i>		32	<i>Cords</i>		
	<i>White Oak</i>		13	<i>Cords</i>		
	Red Pine		31	Cords		
	White Pine		9	Cords		
	5	Black/Red (Hybrid)	Sawtimber	10.0		
<i>/Red (Hybrid) Oak</i>			10.0	<i>MBF</i>		
Mixed Aspen			17.5	MBF		
<i>B. T. Aspen</i>			17.2	<i>MBF</i>		
<i>Quaking Aspen</i>			0.3	<i>MBF</i>		
Red Maple			1.6	MBF		
Red Oak			29.9	MBF		
Red Pine			30.6	MBF		
White Oak			14.4	MBF		
White Pine			0.7	MBF		
Balsam Fir		Pulpwood	7	Cords		
<i>Balsam Fir</i>			7	<i>Cords</i>		
Mixed Aspen			329	Cords		
<i>B. T. Aspen</i>			302	<i>Cords</i>		
<i>Quaking Aspen</i>			27	<i>Cords</i>		
Mixed Hardwood			91	Cords		
<i>Black Cherry</i>			1	<i>Cords</i>		
<i>Red Maple</i>			90	<i>Cords</i>		
Mixed Oak			144	Cords		
<i>/Red (Hybrid) Oak</i>			33	<i>Cords</i>		
<i>Red Oak</i>			75	<i>Cords</i>		
<i>White Oak</i>			36	<i>Cords</i>		
Red Pine			51	Cords		
White Pine		15	Cords			
6	Black/Red (Hybrid)	Sawtimber	6.7	MBF	18.4	\$22,981.70
	<i>/Red (Hybrid) Oak</i>		6.7	<i>MBF</i>		
	Mixed Aspen		3.6	MBF		
	<i>Quaking Aspen</i>		3.6	<i>MBF</i>		
	Red Maple		13.0	MBF		
	Red Oak		45.4	MBF		
	Red Pine		35.1	MBF		
	White Pine		10.2	MBF		
	Balsam Fir	Pulpwood	71	Cords		
	<i>Balsam Fir</i>	<i>Sawtimber</i>	1.1	<i>MBF</i>		
	<i>Balsam Fir</i>	<i>Pulpwood</i>	69	<i>Cords</i>		
	Black Spruce		2	Cords		
	Mixed Aspen		73	Cords		

**DESCRIPTION OF TIMBER BY PU (PU), CON'T**

PU	MARKET GROUP	PRODUCT	QUANTITY	UNIT	ACRES	ADVERTISE PRICE			
6 con't	<i>B. T. Aspen</i>	<i>Pulpwood</i>	12	<i>Cords</i>					
	<i>Quaking Aspen</i>		61	<i>Cords</i>					
	Mixed Hardwood		86	<i>Cords</i>					
	<i>Black Cherry</i>		3	<i>Cords</i>					
	<i>Red Maple</i>		83	<i>Cords</i>					
	Mixed Oak		71	<i>Cords</i>					
	<i>/Red (Hybrid) Oak</i>		14	<i>Cords</i>					
	<i>Red Oak</i>		54	<i>Cords</i>					
	<i>White Oak</i>		3	<i>Cords</i>					
	Red Pine		24	<i>Cords</i>					
	White Pine		15	<i>Cords</i>					
7	Black/Red (Hybrid)	Sawtimber	7.5	MBF	29.8	\$25,294.30			
	<i>/Red (Hybrid) Oak</i>		7.5	<i>MBF</i>					
	Mixed Aspen		8.5	MBF					
	<i>B. T. Aspen</i>		6.4	<i>MBF</i>					
	<i>Quaking Aspen</i>		2.1	<i>MBF</i>					
	Red Maple		3.2	MBF					
	Red Oak		38.4	MBF					
	Red Pine		24.8	MBF					
	White Oak		18.0	MBF					
	White Pine		1.4	MBF					
	Balsam Fir		Pulpwood	6			<i>Cords</i>		
	<i>Balsam Fir</i>			6			<i>Cords</i>		
	Mixed Aspen			177			<i>Cords</i>		
	<i>B. T. Aspen</i>	130		<i>Cords</i>					
	<i>Balsam Poplar</i>	2		<i>Cords</i>					
	<i>Quaking Aspen</i>	45		<i>Cords</i>					
	Mixed Hardwood	121		<i>Cords</i>					
	<i>Black Cherry</i>	2		<i>Cords</i>					
	<i>Red Maple</i>	119		<i>Cords</i>					
	Mixed Oak	154		<i>Cords</i>					
	<i>/Red (Hybrid) Oak</i>	19		<i>Cords</i>					
	<i>Red Oak</i>	88		<i>Cords</i>					
	<i>White Oak</i>	47		<i>Cords</i>					
	Red Pine	47		<i>Cords</i>					
	White Pine	13	<i>Cords</i>						
	8	Mixed Aspen	Sawtimber	24.3			MBF	22.9	\$16,206.20
		<i>B. T. Aspen</i>		11.5			<i>MBF</i>		
<i>Quaking Aspen</i>		12.8		<i>MBF</i>					
Red Maple		1.4		MBF					
Red Oak		7.1		MBF					
Red Pine		24.5		MBF					
Balsam Fir		Pulpwood	27	<i>Cords</i>					
<i>Balsam Fir</i>			27	<i>Cords</i>					
Mixed Aspen			313	<i>Cords</i>					
<i>B. T. Aspen</i>			80	<i>Cords</i>					
<i>Balsam Poplar</i>			12	<i>Cords</i>					
<i>Quaking Aspen</i>			221	<i>Cords</i>					
Mixed Hardwood			61	<i>Cords</i>					
<i>Red Maple</i>			61	<i>Cords</i>					
Mixed Oak			6	<i>Cords</i>					
<i>Red Oak</i>			6	<i>Cords</i>					
Red Pine			36	<i>Cords</i>					
White Pine	3	<i>Cords</i>							

TOTAL:	568.4	MBF
TOTAL:	3,256	Cords

## Sale Specific Conditions & Requirements

**Sale Name: Big Rock Mix**

**Sale Number: 54-018-23 Seq#: 2**

### 1 - Sale Area

#### 1.2 - Boundaries

##### 1.2.1 - Painted boundaries (9/19)

The sale boundary and Payment Unit boundaries are marked and identified by blue, red and yellow paint. Exterior sale boundary lines against private property are marked with blue paint. Exterior sale boundary lines against state are marked with red paint. Interior Payment Unit boundaries are marked with yellow paint. Yellow painted trees designating an interior Payment Unit boundary are only to be cut when all surrounding Payment Units have been paid.

### 2 - Timber Specifications

#### 2.1 - Included Timber

##### 2.1.1 - Clearcut unit(s) with unmerchantable trees (6/14)

Within Payment Unit(s) 1-8, cut all trees that are two (2) inches or more at DBH, except do not cut any pine that are 26 inches or more at DBH and do not cut any oak that are 30 inches or more at DBH. In addition, within Payment Units 4-5 and 7, do not cut any oak trees that are four (4) inches or less at DBH.

Special protection trees identified in accordance with condition 3.4.2, within clearcutting unit boundaries, are not Included Timber and are to be protected.

#### 2.2 - Utilization

##### 2.2.6 - Roundwood operation required (3/21)

The skidding of whole trees or tree segments with limbs attached is prohibited in Payment Unit(s) 4-5 and 7. All products must be produced as roundwood and forwarded to existing roads or landing areas in final product length. Trees must be harvested with in-woods processor (feller-bunching harvester will not be allowed) in order to retain existing understory.

### 3 - Payments

#### 3.3 - Pre-measured Sales

##### 3.3.4 - Dividing payment units (7/14)

Payment Unit(s) exceeding \$25,000 in value may be divided at the request of the Purchaser and upon approval of the Unit Manager. Dividing Payment Units is a contract modification which requires a Timber Sale Contract Amendment. There will be only one division per Payment Unit.

#### 3.4 - Damaged Timber

##### 3.4.1 - Damaged timber (7/16)

General Condition and Requirement 3.4 Damaged Timber, defines liquidated damages for undesignated live merchantable trees which are cut or injured. In addition, extreme care should be taken to avoid damage to oak seedlings and saplings.

Within Payment Units 4-5 and 7, if more than 50% of the oak seedlings or saplings (1/4" to 4.5" DBH) within a specified portion of the Sale Area are damaged, liquidated damages will be assessed at \$500 per acre for all acreage within that specified portion of the Sale Area that was damaged.

##### 3.4.2 - Special Protection Trees (4/14)

The Purchaser shall not cut live or dead special protection trees within cutting units or clearings. Special protection trees are legacy pine trees that are 26 inches or more at DBH and legacy oak trees that are 30 inches or more at DBH. If the Purchaser's operations have cut or damaged special protection trees through carelessness, the Purchaser shall pay \$200 as fixed, agreed and liquidated damages for each special protection tree cut or damaged. Such payment does not constitute ownership of the undesignated timber.



## 4 - Transportation

### 4.1 - Construction

#### 4.1.3 - Slash and earthen piles (8/04)

Piles or windrows of earth along roads and landings that have been widened or constructed shall be leveled. Slash from road maintenance or construction, including stumps, shall be dispersed throughout the sale.

#### 4.1.6 - Road construction (4/24)

Construction of new roads or improvements of existing roads shall be done in such a way as to minimize the environmental and visual impacts. Merchantable trees shall be cut and utilized unless otherwise directed. Non-merchantable trees shall be severed and laid flat on the ground. Slash shall be scattered, and not left in windrows and kept a minimum of 10 feet back from the road edge. Stumps shall be set upright, not left on edge, and be moved at least 10 feet away from the road edge. Disturbed soil shall be feathered into the woods and not left in berms or windrows.

#### 4.1.7 - Road closure (10/11)

All new roads built into the sale must be blocked to vehicle traffic upon completion of the sale. Overgrown roads that are reopened shall be considered new roads. In general, this will require constructing a four (4') foot high berm of stumps and logs covered with earth. Stumps and brush may be placed along the remainder of the trail. These roads must be rendered impassable to cars and trucks. Contact the Sale Administrator for specific details of design and placement.

### 4.2 - Maintenance

#### 4.2.2 - Fill material (4/07)

To maintain roads, fill material may be needed in areas where "holes" exist or may be expected to develop. This fill material should be placed before trucking begins. Acceptable fill material shall contain neither clay nor organic material.

#### 4.2.5 - Two wheel drive condition (2/04)

All existing trail roads on and adjacent to the sale area must be passable by two-wheel drive traffic for the duration of the sale.

## 5 - Operations

### 5.1 - Notification

#### 5.1.1 - Pre-sale conference (10/16)

A pre-sale conference between the Purchaser and sale administrator is required prior to beginning any operations to determine landing and road locations. The Unit Manager or his/her representative must be contacted at least 10 days in advance to schedule the conference.

#### 5.1.4 - Post-sale conference (10/16)

A post-sale conference on site between the Purchaser and sale administrator is required 5 days prior to the completion of active logging operations to determine clean-up and repair of landings, road edges, and the fulfillment of other contract specifications.

### 5.2 - Conduct of Operations

#### 5.2.2 - Hazard Trees/Snags

##### 5.2.2.1 - Den trees (10/16)

Obvious hollow and/or den trees shall be protected and left standing unless they are a safety hazard.

#### 5.2.3 - Operating Restrictions

##### 5.2.3.4 - Oak wilt restriction, no exceptions (1/18)

Within Payment Units 1 and 4-7, cutting, skidding, and hauling within the sale and brushing of access roads to the sale are not permitted during the period of April 15 to July 15. No exceptions will be granted. This is necessary to reduce the spread of oak wilt.

##### 5.2.3.5 - Oak wilt restriction (1/18)

Within Payment Units 2-3 and 8, unless changed by written agreement, cutting, skidding, hauling within the sale and

brushing of access roads to the sale are not permitted during the period of April 15 to July 15. Operations may be allowed if specific steps are taken to prevent damaging uncut oak during the high risk period. Those steps may include completing all road brushing before April 15th and clearing a tree-length buffer along uncut oak cover before April 15th. This is necessary to reduce the spread of oak wilt. For more information, contact the Unit Manager or his/her representative.

#### 5.2.3.11 - Coppice regeneration protection (4/10)

Timber harvesting in any Payment Unit must be completed before significant deciduous sprouting occurs in that Payment Unit so as to minimize damage to the new regeneration.

### 5.2.4 - Dead and Down Creation

#### 5.2.4.4 - Dead and down creation, grouse (6/18)

To encourage grouse and other wildlife, in Payment Unit(s) 2-8, leave one, 12-inch diameter or larger log-length (8 foot minimum) piece on the ground for every 2 acres. These trees are designated with orange paint. These trees will be evenly scattered throughout the unit, preferably at least two chains from any roads, two-tracks, or trails open to vehicles. If it is impossible or impractical to push these trees over, they may be severed or partially severed at the stump. Whenever possible the stem of the tree should rest above ground level.

#### 5.2.32 - Decking/landing restoration (9/13)

All decking and landing areas must have the surface area restored to a condition equal to or better than before. This is to ensure the proper regeneration of the stand. Wood debris, chips and "cookies" from trimmings must be removed or scattered away from landing and loading areas and may not be windrowed on the edge.

### 5.4 - Soil Protection

#### 5.4.1 - Rutting restriction, general (7/16)

Operations are to cease immediately if equipment and weather conditions result in rutting of roads and/or skid trails which is 12 inches or greater in depth and 50 feet in length. The Unit Manager or his/her representative may restrict hauling and/or skidding if ruts exceed the specified depth. With the Unit Manager or his/her representative's approval, the Purchaser may return to the area when the risk of rutting has decreased.

### 5.8 - Protection of Endangered Species

#### 5.8.5 - Protection of raptor nests (3/13)

All trees with raptor nests will be protected if found during harvesting operations. Notification will be made to the Unit Manager or his/her representative who will notify the Wildlife Biologist so an on-site evaluation and recommendation can be made, if necessary.

#### 5.8.8 - Protected species, other (2/12)

Within Payment Unit 8, no harvesting activities shall occur during the time period of April 1 to October 15. Additionally, the ground must be frozen or dry and firm. Wood cut during the operational period must be hauled prior to April 1. This restriction is to protect the eastern massasauga rattlesnake and its habitat.

## 6 - Safety and Fire Prevention

### 6.2 - Signing

#### 6.2.3 - Recreational trail posting (10/20)

The Purchaser is responsible for posting and maintaining caution signs on the Atlanta ORV route prior to beginning operations. The trail must be posted at locations designated on the map to warn of logging activity and truck traffic at both ends of the trail. Signs must be removed when harvest operations are suspended or completed. The Purchaser will provide these signs.



# TIMBER SALE MAP

This information provided by authority of Part 525, 1994 PA 451, as amended.

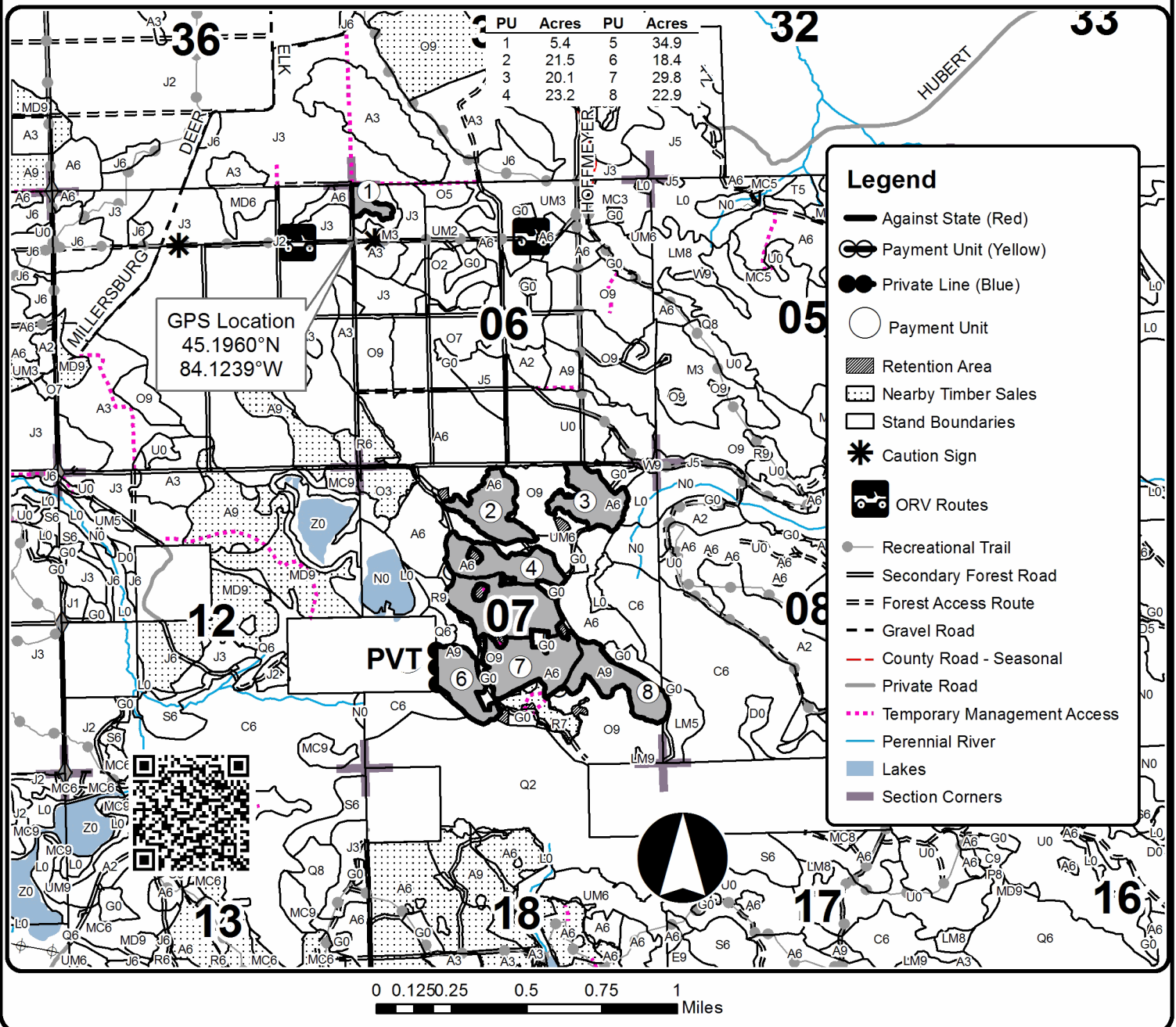
Forest Management Unit Atlanta	County Montmorency	Mapped By Natzke	Date 06/08/2023	Page 3	of 3
Township 32N	Range 03E	Section(s) and Subdivision(s) Sec.6 NWNW, Sec 7 E2NW, NE, E2SW, SE, Sec 8 SWSW.	Scale 1:31,680		

Cover Type				Density	
A = Aspen	H = Hemlock	N = Marsh	U = Upland Brush	0 = Non Stocked	5 = Pole Timber Medium
B = Paper Birch	J = Jack Pine	O = Oak	UM = Upland Mixed	1 = Seedling Sapling Poor	6 = Pole Timber Well
C = Cedar	L = Lowland Brush	P = Lowland Poplar	V = Bog or Marsh	2 = Seedling Sapling Medium	7 = Saw Timber Poor
D = Tread Bog	LM = Lowland Mixed	Q = Mixed Swamp Conifer	W = White Pine	3 = Seedling Sapling Well	8 = Saw Timber Medium
E = Swamp Hdwoods	M = Mpl, Bch, Brch	R = Red Pine	X = Non Stocked	4 = Pole Timber Poor	9 = Saw Timber Well
F = Spruce Fir	MC = Mixed Conifer	S = Black Spruce	Z = Water		
G = Grass	MD = Mixed Deciduous	T = Tamarack			

## Big Rock Mix

### Compartment 70

176.2 Acres





# TIMBER SALE MAP

This information provided by authority of Part 525, 1994 PA 451, as amended.

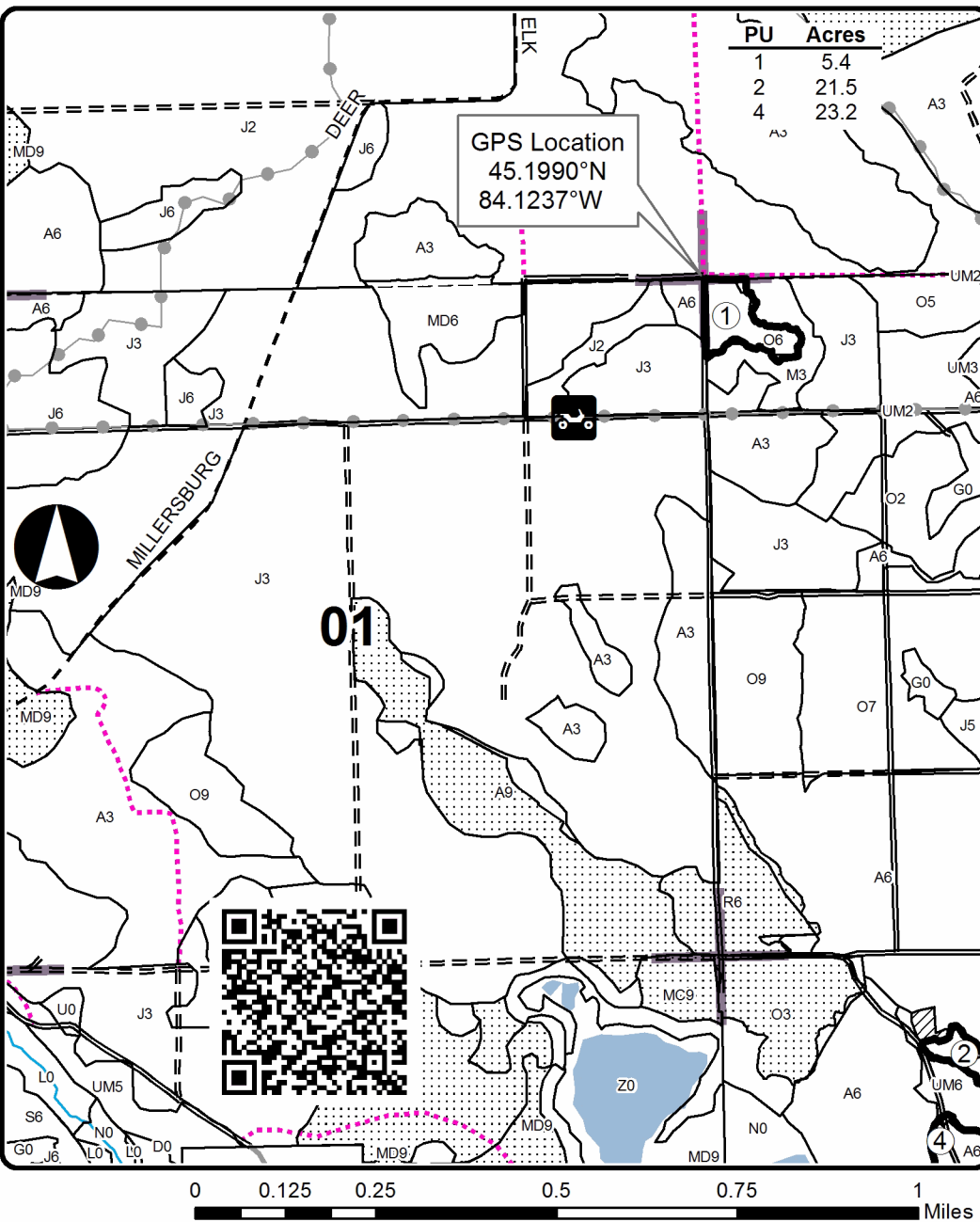
Forest Management Unit Atlanta	County Montmorency	Mapped By Natzke	Date 06/08/2023	Page 1	of 3
Township 32N	Range 03E	Section(s) and Subdivision(s) Sec.6 NWNW, Sec 7 E2NW, NE, E2SW, SE, Sec 8 SWSW.	Scale 1:15,840		

Cover Type				Density	
A = Aspen	H = Hemlock	N = Marsh	U = Upland Brush	0 = Non Stocked	5 = Pole Timber Medium
B = Paper Birch	J = Jack Pine	O = Oak	UM = Upland Mixed	1 = Seedling Sapling Poor	6 = Pole Timber Well
C = Cedar	L = Lowland Brush	P = Lowland Poplar	V = Bog or Marsh	2 = Seedling Sapling Medium	7 = Saw Timber Poor
D = Treed Bog	LM = Lowland Mixed	Q = Mixed Swamp Conifer	W = White Pine	3 = Seedling Sapling Well	8 = Saw Timber Medium
E = Swamp Hdwoods	M = Mpl, Bch, Brch	R = Red Pine	X = Non Stocked	4 = Pole Timber Poor	9 = Saw Timber Well
F = Spruce Fir	MC = Mixed Conifer	S = Black Spruce	Z = Water		
G = Grass	MD = Mixed Deciduous	T = Tamarack			

## Big Rock Mix

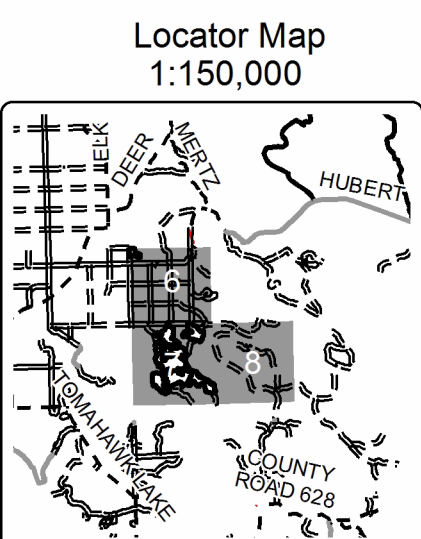
### Compartment 70

176.2 Acres



### Legend

- ORV Routes
- Against State (Red)
- Stand Boundaries
- Recreational Trail
- Secondary Forest Road
- Forest Access Route
- Gravel Road
- Private Road
- Temporary Management Access
- Perennial River
- Lakes and Rivers
- Retention Area
- Nearby Timber Sales
- Section Corners







# TIMBER SALE MAP

This information provided by authority of Part 525, 1994 PA 451, as amended.

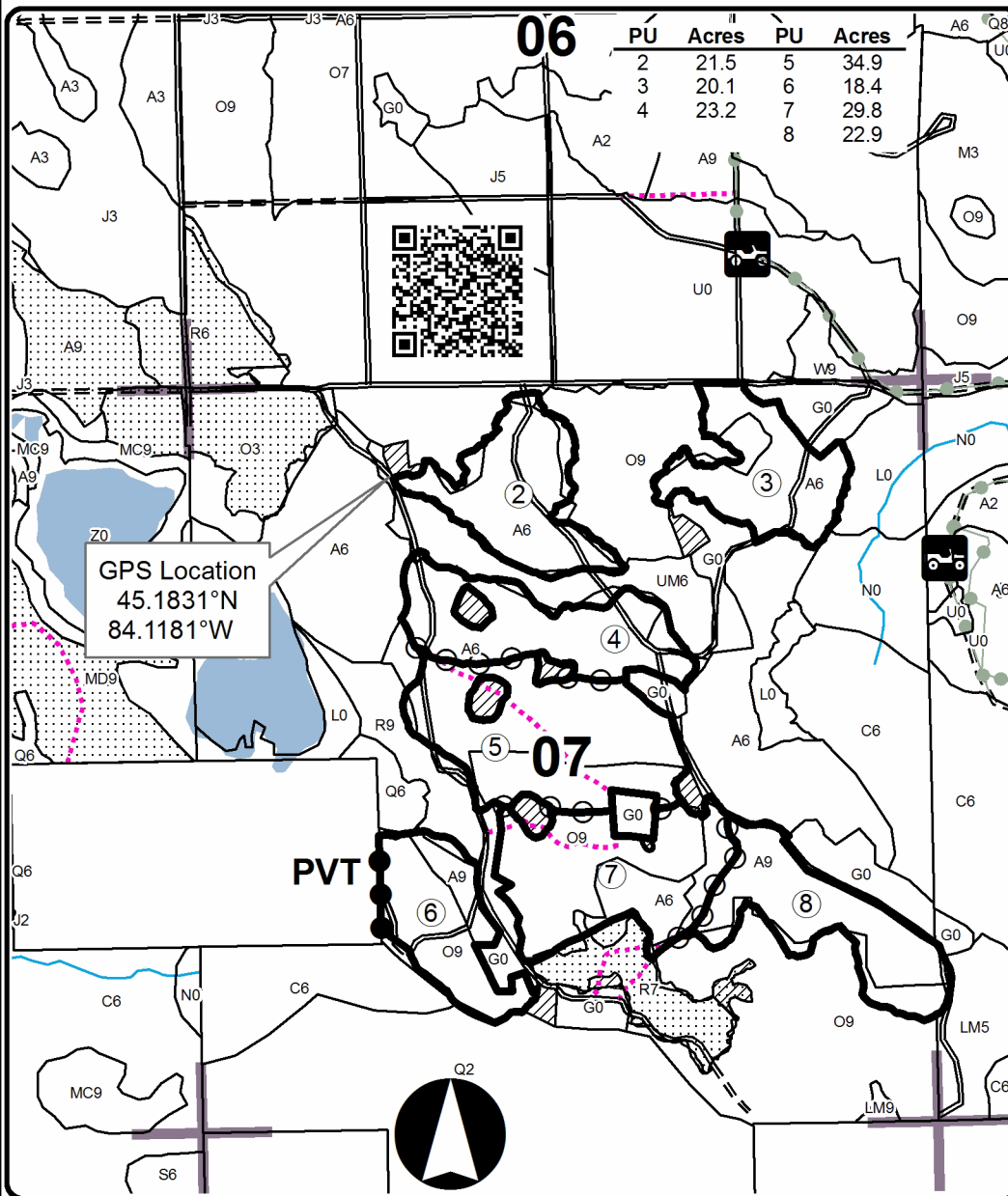
Forest Management Unit Atlanta		County Montmorency	Mapped By Natzke	Date 06/08/2023	Page 2	of 3
Township 32N	Range 03E	Section(s) and Subdivision(s) Sec.6 NWNW, Sec 7 E2NW, NE, E2SW, SE, Sec 8 SWSW.		Scale 1:15,840		

Cover Type				Density	
A = Aspen	H = Hemlock	N = Marsh	U = Upland Brush	0 = Non Stocked	5 = Pole Timber Medium
B = Paper Birch	J = Jack Pine	O = Oak	UM = Upland Mixed	1 = Seedling Sapling Poor	6 = Pole Timber Well
C = Cedar	L = Lowland Brush	P = Lowland Poplar	V = Bog or Marsh	2 = Seedling Sapling Medium	7 = Saw Timber Poor
D = Treed Bog	LM = Lowland Mixed	Q = Mixed Swamp Conifer	W = White Pine	3 = Seedling Sapling Well	8 = Saw Timber Medium
E = Swamp Hdwoods	M = Mpl, Bch, Brch	R = Red Pine	X = Non Stocked	4 = Pole Timber Poor	9 = Saw Timber Well
F = Spruce Fir	MC = Mixed Conifer	S = Black Spruce	Z = Water		
G = Grass	MD = Mixed Deciduous	T = Tamarack			

## Big Rock Mix

### Compartment 70

176.2 Acres



- Against State (Red)
- Payment Unit (Yellow)
- Private Line (Blue)
- Payment Unit
- Retention Area
- Nearby Timber Sales
- Stand Boundaries
- Recreational Trail
- ORV Routes
- Secondary Forest Road
- Forest Access Route
- Temporary Management Access
- Perennial River
- Lakes and Rivers
- Section Corners

Locator Map  
1:150,000

