



**DEPARTMENT OF NATURAL RESOURCES  
STATE OF MICHIGAN**

**TIMBER SALE PROSPECTUS #7433**

**REVISION NOTICE #1 - June 6, 2024**

SCHEDULED SALE DATE AND TIME: 3:00 p.m. (local time) on Thursday, July 11, 2024

LOCATION: NEWBERRY MGMT UNIT, PO Box 428, 5666 S STATE HWY M 123, NEWBERRY, MI 49868

This prospectus has been modified with the following changes.

42-016-23 Auger Creek Mix - Sale Specific Spec. 5.2.3.1 is being corrected to read:

Within Payment Unit(s) 1-6, unless changed by written agreement, cutting, skidding, and hauling are **ONLY** permitted during the period of December 31 to March 15. This restriction is because of low ground within the Sale Area and the need for winter conditions to operate .

We apologize for any inconvenience this may have caused . If you need assistance, please contact Keith Magnusson at 906-291-0120 ext. n/a.



**DEPARTMENT OF NATURAL RESOURCES  
STATE OF MICHIGAN  
TIMBER SALE PROSPECTUS #7433**

**SCHEDULED SALE DATE AND TIME: 3:00 p.m. (local time) on July 11, 2024.**

**LOCATION: NEWBERRY MGMT UNIT, PO BOX 428, 5666 S STATE HWY M 123, NEWBERRY, MI 49868.**

**CONTACT NAME: Keith Magnusson**

**PHONE NUMBER: (906) 291-0120**

**PROSPECTUS NOTE: The bidder is advised to inspect the sale area and review the location, estimated volumes, operating costs and contract terms of proposed sales. Please be aware that some landowners may request 60 days or more notice for access across their land.**

Notice is hereby given that bids will be received by the Unit Manager, NEWBERRY MANAGEMENT UNIT, for certain timber on the following described lands:

Spectacle Spectacular (42-030-23) / T47N, R08W, SEC. 19, S1/2NW, NESW.

Luce County, Advertised Price \$26,846.60, 70.3 Acres, Hardwood, Spruce/Fir/Tamarack.

SALE NOTE: Within Payment Unit(s) 1 - 3, harvesting is limited to the period of December 1 to April 1 because of low, wet ground.

Creation of nurse logs and snowshoe hare habitat is required on this sale. See Sale Spec 5.2.4.6 for detailed information.

The Charcoal Grade is a snowmobile trail and is shown on the Timber Sale Map. See Sale Spec 5.2.41 for restrictions.

A recreation site such as a trail, pathway, or campground is within the sale area or the vicinity. Certain restrictions/specifications may be applicable including time restrictions.

# TIMBER SALE INFORMATION

Spectacle Spectacular (42-030-23)

T47N, R08W, SEC. 19.

Luce County (Advertised Price \$26,846.60)

SALE NOTE: Within Payment Unit(s) 1 - 3, harvesting is limited to the period of December 1 to April 1 because of low, wet ground.

Creation of nurse logs and snowshoe hare habitat is required on this sale. See Sale Spec 5.2.4.6 for detailed information.

The Charcoal Grade is a snowmobile trail and is shown on the Timber Sale Map. See Sale Spec 5.2.41 for restrictions.

A recreation site such as a trail, pathway, or campground is within the sale area or the vicinity. Certain restrictions/specifications may be applicable including time restrictions.

A timber sale contract for this lump sum, sealed bid timber sale will be awarded to the responsible bidder offering the highest sealed bid price. All units of volume listed below were estimated using the Inventory Manager computer program and the new Michigan taper model. Bids must be at or above the following advertised price for each product and species:

<u>PRODUCTS &amp; SPECIES</u>	<u>ESTIMATED UNITS*</u>	<u>ADVERTISED PRICE</u>
Sawtimber		
N. White Cedar	28.6 MBF	\$ 19.00 / MBF
Red Maple	49.7 MBF	\$ 61.00 / MBF
Yellow Birch	12.3 MBF	\$ 76.00 / MBF
Pulpwood		
Balsam Fir	251 Cords	\$ 10.55 / Cord
Mixed Hardwood	898 Cords	\$ 12.00 / Cord
Mixed Spruce	220 Cords	\$ 6.45 / Cord
N. White Cedar	281 Cords	\$ 2.90 / Cord
Paper Birch	70 Cords	\$ 7.10 / Cord
Quaking Aspen	163 Cords	\$ 25.35 / Cord
White Pine	103 Cords	\$ 19.90 / Cord

\* The total volume is statistically estimated within plus (+) or minus (-) 17.71 percent. There are an estimated 2,200 cords on this timber sale, plus or minus 390 cords at the 95% confidence level. The estimated units are final and not subject to adjustment. Prospective bidders are urged to examine this timber and to make their own estimates of quantity and quality.

## **BOND AND PAYMENT SCHEDULE:**

1. A bond in the amount of \$1,342.33 to insure faithful performance of the conditions of the contract will be deposited by the successful bidder within 21 days of the sale award.
2. Cutting in any sale or unit without the required advance payment would be considered a trespass.
3. Total payment must be paid in advance or according to the following schedule:
  - (a) Ten percent (10%) of the sale value must be paid within 21 days of the sale award.
  - (b) The 10% down payment will be credited towards the first unit cut.
  - (c) Payment for each of the following units must be made before cutting begins in that unit:

<u>PAYMENT UNIT NUMBER</u>	<u>PERCENT OF TOTAL SALE VALUE</u>
01	47.3%
02	22.0%
03	30.7%

4. If no cutting takes place, the 10% down payment will not be refunded.
5. Operations on the contract issued will terminate on 06/30/2028.

## **SALE STATISTICS**

Volumes were calculated in cubic feet using the Michigan taper model. Cubic foot volume includes all wood inside bark for the product indicated. For display purposes, cubic feet were converted to cords and MBF using a simple conversion factor, e.g. 79 cubic feet per cord and 185 cubic feet per MBF. The cubic foot volumes are precise; the cords and MBF volumes are not. Cubic foot volume cannot be directly converted to cords or boards with precision.

**SALE VOLUMES**

The total estimated sale volume may not equal the sum of the species/products due to the nature of statistical calculations associated with double sampling methodology.

VOLUME			STATISTICAL RANGE IN CORDS	
TOTAL CUBIC FEET	TOTAL CORDS	PERCENT ERROR	MINIMUM	MAXIMUM
173,822	2,200	17.71%	1,811	2,590

**VDU VOLUMES**

A VDU is a Volume Determination Unit. Volumes and their associated statistics are calculated at the VDU level and summarized to the sale level. There is often a one to one relationship between a VDU and a Payment Unit, but not always, depending on the cruise design. Refer to the VDU TO PAYMENT UNIT table.

	VOLUME			RANGE IN CORDS	
VDU	TOTAL CUBIC FEET	TOTAL CORDS	PERCENT ERROR	MINIMUM	MAXIMUM
46	173,822	2,200	17.71%	1,811	2,590
<b>TOTAL:</b>	<b>173,822</b>	<b>2,200</b>		<b>1,811</b>	<b>2,590</b>

**VDU TO PAYMENT UNIT**

When a VDU is associated with more than one Payment Unit (PU), the VDU volumes are assigned to the PU based on acres of the VDU within the PU.

VDU	VDU ACRES	PU	PU ACRES
46	70.3	1	33.3
		2	15.4
		3	21.6
<b>TOTAL:</b>	<b>70.3</b>		<b>70.3</b>

**DESCRIPTION OF TIMBER BY PU (PU)**

PU	MARKET GROUP	PRODUCT	QUANTITY	UNIT	ACRES	ADVERTISE PRICE
1	N. White Cedar	Sawtimber	13.5	MBF	33.3	\$12,709.75
	Red Maple		23.5	MBF		
	Yellow Birch		5.8	MBF		
	Balsam Fir	Pulpwood	119	Cords		
	Mixed Hardwood		426	Cords		
	<i>Beech</i>		33	<i>Cords</i>		
	<i>Red Maple</i>		374	<i>Cords</i>		
	<i>Yellow Birch</i>		19	<i>Cords</i>		
	Mixed Spruce		105	Cords		
	<i>Black Spruce</i>		81	<i>Cords</i>		
	<i>White Spruce</i>		24	<i>Cords</i>		
	N. White Cedar		133	Cords		
	Paper Birch		34	Cords		
	<i>Paper Birch</i>	<i>Sawtimber</i>	3.3	<i>MBF</i>		
	<i>Paper Birch</i>	<i>Pulpwood</i>	27	<i>Cords</i>		
	Quaking Aspen		77	Cords		
	White Pine		48	Cords		
2	N. White Cedar	Sawtimber	6.3	MBF	15.4	\$5,900.25
	Red Maple		10.9	MBF		
	Yellow Birch		2.7	MBF		
	Balsam Fir	Pulpwood	55	Cords		
	Mixed Hardwood		197	Cords		
	<i>Beech</i>		15	<i>Cords</i>		
	<i>Red Maple</i>		173	<i>Cords</i>		
	<i>Yellow Birch</i>		9	<i>Cords</i>		
	Mixed Spruce		48	Cords		
	<i>Black Spruce</i>		37	<i>Cords</i>		
	<i>White Spruce</i>		11	<i>Cords</i>		
	N. White Cedar		62	Cords		
	Paper Birch		15	Cords		
	<i>Paper Birch</i>	<i>Sawtimber</i>	1.5	<i>MBF</i>		
	<i>Paper Birch</i>	<i>Pulpwood</i>	12	<i>Cords</i>		
	Quaking Aspen		36	Cords		
	White Pine		23	Cords		
3	N. White Cedar	Sawtimber	8.8	MBF	21.6	\$8,236.60
	Red Maple		15.3	MBF		
	Yellow Birch		3.8	MBF		
	Balsam Fir	Pulpwood	77	Cords		
	Mixed Hardwood		275	Cords		
	<i>Beech</i>		21	<i>Cords</i>		
	<i>Red Maple</i>		242	<i>Cords</i>		
	<i>Yellow Birch</i>		12	<i>Cords</i>		
	Mixed Spruce		67	Cords		
	<i>Black Spruce</i>		52	<i>Cords</i>		
	<i>White Spruce</i>		15	<i>Cords</i>		
	N. White Cedar		86	Cords		
	Paper Birch		21	Cords		
	<i>Paper Birch</i>	<i>Sawtimber</i>	2.1	<i>MBF</i>		
	<i>Paper Birch</i>	<i>Pulpwood</i>	17	<i>Cords</i>		
	Quaking Aspen		50	Cords		
	White Pine		32	Cords		
TOTAL:			90.6	MBF		
TOTAL:			1,986	Cords		

## Sale Specific Conditions & Requirements

Sale Name: Spectacle Spectacular

Sale Number: 42-030-23 Seq#: 2

### 1 - Sale Area

#### 1.2 - Boundaries

##### 1.2.1 - Painted boundaries (9/19)

The sale boundary and Payment Unit boundaries are marked and identified by blue, red and yellow paint. Exterior sale boundary lines against private property are marked with blue paint. Exterior sale boundary lines against state are marked with red paint. Interior Payment Unit boundaries are marked with yellow paint. The painted boundary line trees are not Included Timber and are to be protected. Yellow painted trees designating an interior Payment Unit boundary are only to be cut when all surrounding Payment Units have been paid.

### 2 - Timber Specifications

#### 2.1 - Included Timber

##### 2.1.1 - Clearcut unit(s) with unmerchantable trees (6/14)

Within Payment Unit(s) 1-3, cut all trees that are two (2) inches or more at DBH, except do not cut white pine that are eighteen (18) inches or more at DBH, any hemlock, or trees ringed in green paint.

Special protection trees identified in accordance with condition 3.4.2, within clearcutting unit boundaries, are not Included Timber and are to be protected.

##### 2.1.9 - Harvest exception (12/08)

Do not cut any hemlock trees other than those that are necessary to remove in order to operate within the sale area. Every effort must be made to preserve the existing hemlock and to leave an intact stand upon sale completion. All cut hemlock shall be piled separately by products and scaled in the woods unless other scaling arrangements are agreed to by the Unit Manager or his/her representative. Stumpage price for hemlock shall be \$50.00 per cord for posts and pulpwood, and \$100.00 per cord for bolts and sawlogs.

### 3 - Payments

#### 3.3 - Pre-measured Sales

##### 3.3.4 - Dividing payment units (7/14)

Payment Unit(s) 1-3, may be divided at the request of the Purchaser and upon approval of the Unit Manager. Dividing Payment Units is a contract modification which requires a Timber Sale Contract Amendment. There will be only one division per Payment Unit.

#### 3.4 - Damaged Timber

##### 3.4.2 - Special Protection Trees (4/14)

The Purchaser shall not cut live or dead special protection trees within cutting units or clearings. Special protection trees are marked with green paint, white pine 18 inches or more at DBH, and all hemlock. If the Purchaser's operations have cut or damaged special protection trees through carelessness, the Purchaser shall pay double stumpage as fixed, agreed and liquidated damages for each special protection tree cut or damaged. Such payment does not constitute ownership of the undesignated timber.

### 4 - Transportation

#### 4.1 - Construction

##### 4.1.6 - Road construction (1/09)

Construction of new roads or improvements of existing roads shall be done in such a way as to minimize the environmental and visual impacts. Merchantable trees shall be cut and utilized unless otherwise directed. Non-merchantable trees shall be severed and laid flat on the ground. Slash shall be scattered, and not left in windrows and kept a minimum of 10 feet back

from the road edge. Stumps shall be set upright, not left on edge, and be moved at least 10 feet away from the road edge. Disturbed soil shall be feathered into the woods and not left in berms or windrows.

#### 4.1.7 - Road closure (10/11)

All new roads built into the sale must be blocked to vehicle traffic upon completion of the sale. Overgrown roads that are reopened shall be considered new roads. In general, this will require constructing double earthen berms at strategic locations. All stumps from road building and landing construction must be reserved to block any newly constructed roads upon completion of the sale. These stumps must be scattered along the road system to prohibit vehicular movement. Contact the Sale Administrator for specific details of design and placement.

### 4.2 - Maintenance

#### 4.2.2 - Fill material (4/07)

To maintain roads, fill material may be needed in areas where "holes" exist or may be expected to develop. This fill material should be placed before trucking begins. Contact the Sale Administrator regarding the availability of onsite sand or gravel from adjacent State-owned lands.

#### 4.2.4 - Grading (10/16)

For completion of the sale, state forest roads must be graded. In general, this will require a road grader or bulldozer to shape up the roads after forest products have been hauled off site. This includes cleaning of drainage areas, grading, crowning, and filling with gravel, if necessary. The grading equipment to be used must be approved by the Unit Manager or his/her representative.

#### 4.2.5 - Two wheel drive condition (2/04)

All existing trail roads on and adjacent to the sale area must be passable by two-wheel drive traffic for the duration of the sale.

## 5 - Operations

### 5.2 - Conduct of Operations

#### 5.2.1 - Slash

##### 5.2.1.8 - Slash height (12/08)

No slash may exceed 36 inches in height.

#### 5.2.2 - Hazard Trees/Snags

##### 5.2.2.1 - Den trees (10/16)

Obvious hollow and/or den trees shall be protected and left standing unless they are a safety hazard.

#### 5.2.3 - Operating Restrictions

##### 5.2.3.1 - Operating restrictions (9/11)

Within Payment Unit(s) 1-3, unless changed by written agreement, cutting, skidding, and hauling are limited to the period of December 1 to April 1. This restriction is because of low, wet ground.

#### 5.2.4 - Dead and Down Creation

##### 5.2.4.6 - Dead and down creation, other (9/09)

To create nurse logs, push over any trees with a green "T" and leave them lie. The bole of the tree must be in contact with the ground which may require cutting limbs or topping the downed tree.

In addition, for snowshoe hare habitat, create 2 or 3 long linear brush piles a minimum of 50 ft in length using forest products such as stumps and larger unmerchantable woody material (from within the sale boundaries where available), formed into a line as a base. Place tops onto the base along its length to construct a linear pile 6 feet in height. The brush pile should be a jumble of logging slash piled on top of the base. If no unmerchantable products are available for a base, use whole trees 8-16 inches at DBH. Place brush pile perpendicular to the eastern boundary of Payment Unit 3, reaching into the adjacent stand at least 20 feet. Contact Sale Administrator for further information.

#### 5.2.32 - Decking/landing restoration (9/13)

All decking and landing areas must have the surface area restored to a condition equal to or better than before. This is to ensure the proper regeneration of the stand. Wood debris, chips and "cookies" from trimmings must be removed or scattered away from landing and loading areas and may not be windrowed on the edge.

#### 5.2.41 - Snowmobile trail protection (9/11)

The Charcoal Grade is a snowmobile trail and is shown on the Timber Sale Map. Do not cut or damage posts with orange trail markers or traffic control signs. If the trail is used, it must be maintained and restored to a condition equal to or better than before the sale. The road maintenance/restoration must be done prior to December 1. If the trail road is to be used for hauling during the snowmobile season, then a snow-covered base must be left on the trail. No decking of forest products will be permitted along the snowmobile trail.

### 5.8 - Protection of Endangered Species

#### 5.8.5 - Protection of raptor nests (3/13)

All trees with raptor nests will be protected if found during harvesting operations. Notification will be made to the Unit Manager or his/her representative who will notify the Wildlife Biologist so an on-site evaluation and recommendation can be made, if necessary.

## 6 - Safety and Fire Prevention

### 6.2 - Signing

#### 6.2.2 - Snowmobile trail posting (10/20)

The Purchaser is responsible for posting and maintaining caution signs on Charcoal Grade prior to beginning operations during the snowmobile season (approximately December 1 to March 31). The trail must be posted at appropriate distances from the Sale Area to warn of logging activity and truck traffic. Signs must be removed when harvest operations are suspended or completed. The DNR will provide these signs.

## 7 - Other Conditions

### 7.2 - Extensions

#### 7.2.5 - Weather related extension (1/13)

If weather conditions during the operating period of this contract prevent harvesting, this sale may qualify for a weather related extension. If approved, the normal extension fee would be waived. To qualify, there must be a documented attempt each year to harvest in the difficult portion of the sale.





**TIMBER SALE MAP**

This information provided by authority of Part 525, 1994 PA 451, as amended.

Sale Number

42-030-23

Date

10/10/2023

Forest Management Unit  
Newberry Mgt Unit

County  
Luce

Mapped By: L. Livermore

Cruised By: Newberry Unit Staff

Scale

1:20,000

Page

1

Of

1

Township 47N Range 08W Section(s) and Subdivision(s) Sec. 19 S1/2NW,NESW;

**Cover Type**

A = Aspen	J = Jack Pine	O = Oak	U = Upland Brush
B = Paper Birch	K = Rock	P = Lowland Poplar	UM = Upland Mix Forest
C = Cedar	L = Lowland Brush	Q = Mixed Swamp Conifer	V = Bog or Marsh
D = Treed Bog	LM = Lowland Mix Forest	R = Red Pine	W = White Pine
E = Swamp Hardwoods	M = Maple, Beech, Birch	S = Black Spruce	X = Non Stocked
F = Spruce/Fir	MC = Mixed Conifer	T = Tamarack	Y = Sand
G = Grass	MD = Mixed Deciduous	Z = Water	
H = Hemlock	N = Marsh		

**Density**

0 = Non Stocked	5 = Pole Timber Medium
1 = Seedling Sapling Poor	6 = Pole Timber Well
2 = Seedling Sapling Medium	7 = Saw Timber Poor
3 = Seedling Sapling Well	8 = Saw Timber Medium
4 = Pole Timber Poor	9 = Saw Timber Well

**Spectacle Spectacular**

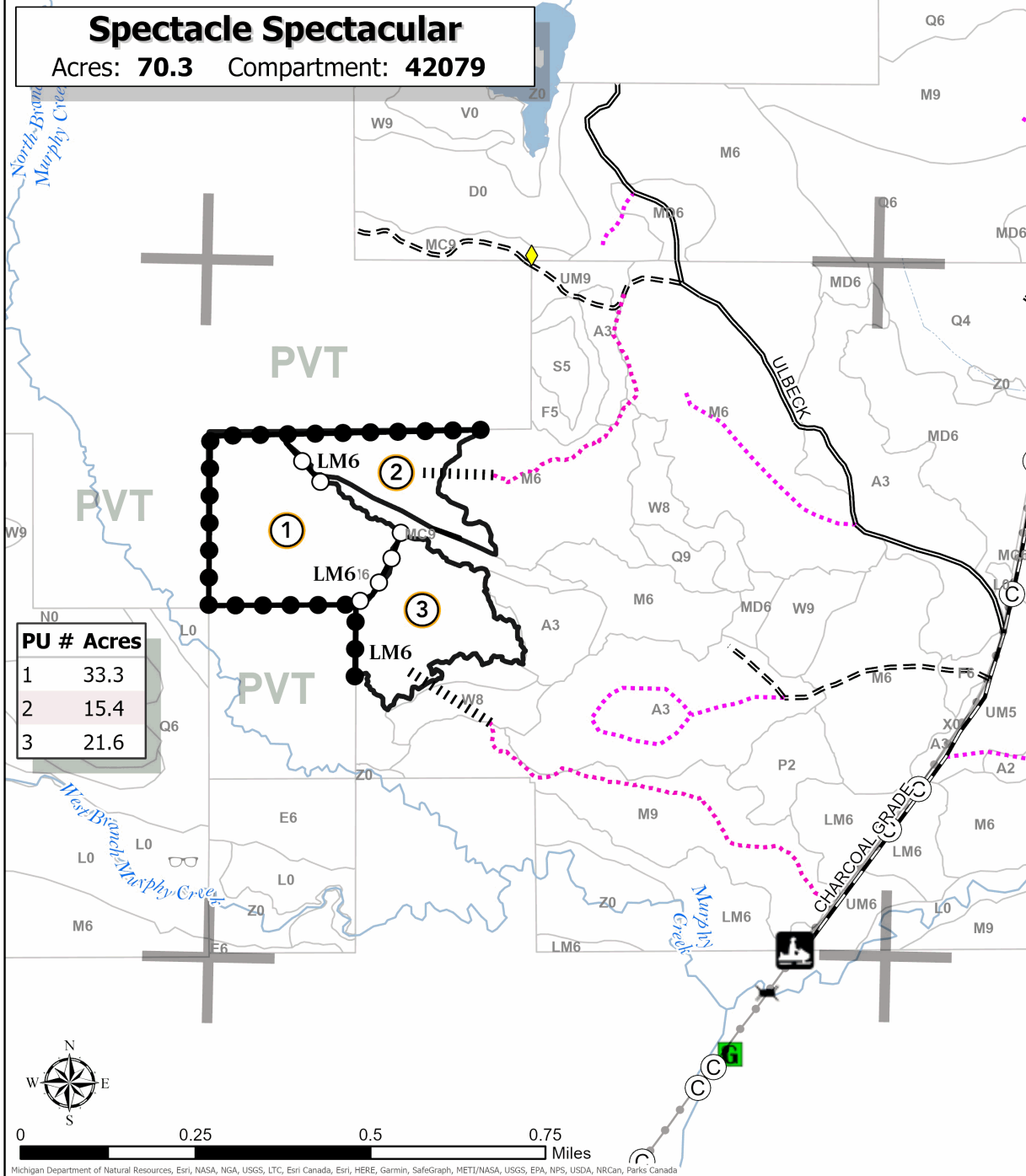
Acres: **70.3** Compartment: **42079**

**QR Code**



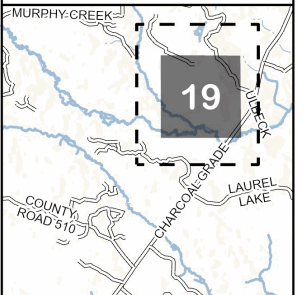
**Legend**

- Against State (Red)
- Payment Unit (Yellow)
- Private Boundary (Blue)
- Survey Grade Corner
- Gate
- MIRIS Section Corner
- Intermittent Stream
- Perennial River
- Lakes and Rivers
- Retention Areas
- Primary Forest Road
- Secondary Forest Road
- Forest Access Route
- Paved Road
- Gravel Road
- County Road - Seasonal
- Private Road
- Temporary Management Access
- Proposed Access
- Stand
- Counties
- Culvert
- Bridge
- Recreational Trail



PU #	Acres
1	33.3
2	15.4
3	21.6

**Locator Map (1:200,000)**



Michigan Department of Natural Resources, Esri, NASA, NGA, USGS, LTC, Esri Canada, Esri, HERE, Garmin, SafeGraph, METI/NASA, USGS, EPA, NPS, USDA, NRCAN, Parks Canada