



**DEPARTMENT OF NATURAL RESOURCES
STATE OF MICHIGAN
TIMBER SALE PROSPECTUS #7481**

SCHEDULED SALE DATE AND TIME: **10:00 a.m. (local time) on October 22, 2024.**

LOCATION: **ATLANTA MGMT UNIT, 13501 M 33, ATLANTA, MI 49709.**

CONTACT NAME: Matt Foster

PHONE NUMBER: (989) 619-5921

PROSPECTUS NOTE: The bidder is advised to inspect the sale area and review the location, estimated volumes, operating costs and contract terms of proposed sales. Please be aware that some landowners may request 60 days or more notice for access across their land.

Notice is hereby given that bids will be received by the Unit Manager, ATLANTA MANAGEMENT UNIT, for certain timber on the following described lands:

Deer In The Headlights Mix 2! (54-999-24) / T32N, R04E, SEC. 17, W1/2NW,NWNE,NWSW.

T32N, R04E, SEC. 18, E1/2NE.

T32N, R04E, SEC. 6 , E1/2SW,W1/2SE.

T32N, R04E, SEC. 7 , SESE.

T32N, R04E, SEC. 8 , SESW,SWSE.

Montmorency County, Advertised Price \$179,772.45, 147.3 Acres, Aspen, Hardwood.

SALE NOTE: Fair to good quality timber. Oak wilt specs on all Payment Units and good access from Hubert Road.

TIMBER SALE INFORMATION

Deer In The Headlights Mix 2! (54-999-24)

T32N, R04E, SEC. 17; T32N, R04E, SEC. 18; T32N, R04E, SEC. 6; T32N, R04E, SEC. 7; T32N, R04E, SEC. 8.
Montmorency County (Advertised Price \$179,772.45)

SALE NOTE: Fair to good quality timber. Oak wilt specs on all Payment Units and good access from Hubert Road.

A timber sale contract for this lump sum, sealed bid timber sale will be awarded to the responsible bidder offering the highest sealed bid price. All units of volume listed below were estimated using the Inventory Manager computer program and the new Michigan taper model. Bids must be at or above the following advertised price for each product and species:

<u>PRODUCTS & SPECIES</u>	<u>ESTIMATED UNITS*</u>	<u>ADVERTISED PRICE</u>
Sawtimber		
Black/Red (Hybrid) Oak	13.7 MBF	\$ 114.00 / MBF
Mixed Aspen	351.4 MBF	\$ 87.00 / MBF
Red Maple	34.5 MBF	\$ 59.00 / MBF
Red Oak	328.9 MBF	\$ 195.00 / MBF
Red Pine	14.8 MBF	\$ 123.00 / MBF
Pulpwood		
Balsam Fir	203 Cords	\$ 18.20 / Cord
Mixed Aspen	1,990 Cords	\$ 21.80 / Cord
Mixed Oak	698 Cords	\$ 28.80 / Cord
Paper Birch	22 Cords	\$ 14.55 / Cord
Red Maple	513 Cords	\$ 20.85 / Cord
Red Pine	33 Cords	\$ 40.70 / Cord
White Spruce	12 Cords	\$ 9.10 / Cord

* The total volume is statistically estimated within plus (+) or minus (-) 13.65 percent. There are an estimated 5,212 cords on this timber sale, plus or minus 712 cords at the 95% confidence level. The estimated units are final and not subject to adjustment. Prospective bidders are urged to examine this timber and to make their own estimates of quantity and quality.

BOND AND PAYMENT SCHEDULE:

1. A bond in the amount of \$8,988.62 to insure faithful performance of the conditions of the contract will be deposited by the successful bidder within 21 days of the sale award.
2. Cutting in any sale or unit without the required advance payment would be considered a trespass.
3. Total payment must be paid in advance or according to the following schedule :
 - (a) Ten percent (10%) of the sale value must be paid within 21 days of the sale award.
 - (b) The 10% down payment will be credited towards the first unit cut.
 - (c) Payment for each of the following units must be made before cutting begins in that unit:

PAYMENT UNIT NUMBER	PERCENT OF TOTAL SALE VALUE
01	6.5%
02	8.7%
03	10.7%
04	12.8%
05	10.1%
06	15.6%
07	17.3%
08	18.3%

4. If no cutting takes place, the 10% down payment will not be refunded.
5. Operations on the contract issued will terminate on 12/31/2027.

SALE STATISTICS

Volumes were calculated in cubic feet using the Michigan taper model. Cubic foot volume includes all wood inside bark for the product indicated. For display purposes, cubic feet were converted to cords and MBF using a simple conversion factor, e.g. 79 cubic feet per cord and 185 cubic feet per MBF. The cubic foot volumes are precise; the cords and MBF volumes are not. Cubic foot volume cannot be directly converted to cords or boards with precision.

SALE VOLUMES

The total estimated sale volume may not equal the sum of the species/products due to the nature of statistical calculations associated with double sampling methodology.

VOLUME			STATISTICAL RANGE IN CORDS	
TOTAL CUBIC FEET	TOTAL CORDS	PERCENT ERROR	MINIMUM	MAXIMUM
411,718	5,212	13.65%	4,500	5,923

VDU VOLUMES

A VDU is a Volume Determination Unit. Volumes and their associated statistics are calculated at the VDU level and summarized to the sale level. There is often a one to one relationship between a VDU and a Payment Unit, but not always, depending on the cruise design. Refer to the VDU TO PAYMENT UNIT table.

VDU	VOLUME		PERCENT ERROR	RANGE IN CORDS	
	TOTAL CUBIC FEET	TOTAL CORDS		MINIMUM	MAXIMUM
15	38,165	483	35.50%	312	655
23	19,345	245	44.68%	135	354
60	113,804	1,441	29.63%	1,014	1,867
83	94,334	1,194	25.62%	888	1,500
96	10,279	130	46.35%	70	190
117	135,791	1,719	26.36%	1,266	2,172
TOTAL:	411,718	5,212		3,685	6,739

VDU TO PAYMENT UNIT

When a VDU is associated with more than one Payment Unit (PU), the VDU volumes are assigned to the PU based on acres of the VDU within the PU.

VDU	VDU ACRES	PU	PU ACRES
15	20.1	1	14.2
		2	5.9
23	12.2	2	12.2
		3	16.3
60	34.7	4	18.4
		7	18.2
83	37.5	8	19.3
		3	3.8
96	10.0	4	6.2
		5	12.9
117	32.8	6	19.9
TOTAL:	147.3		147.3

DESCRIPTION OF TIMBER BY PU (PU)

PU	MARKET GROUP	PRODUCT	QUANTITY	UNIT	ACRES	ADVERTISE PRICE	
1	Mixed Aspen	Sawtimber	13.5	MBF	14.2	\$11,597.00	
	<i>B. T. Aspen</i>		13.5	<i>MBF</i>			
	Red Maple		13.1	MBF			
	Red Oak		19.8	MBF			
	Red Pine		8.8	MBF			
	Balsam Fir		Pulpwood	25			Cords
	Mixed Aspen			70			Cords
	<i>B. T. Aspen</i>			47			<i>Cords</i>
	<i>Quaking Aspen</i>			23			<i>Cords</i>
	Mixed Oak			27			Cords
	<i>Red Oak</i>			27			<i>Cords</i>
	Red Maple			78			Cords
	<i>Red Maple</i>			78			<i>Cords</i>
	Red Pine		7	Cords			
White Spruce	4	Cords					
2	Mixed Aspen	Sawtimber	15.3	MBF	18.1	\$15,601.15	
	<i>B. T. Aspen</i>		15.3	<i>MBF</i>			
	Red Maple		5.5	MBF			
	Red Oak		38.6	MBF			
	Red Pine		6.0	MBF			
	Balsam Fir		Pulpwood	11			Cords
	Mixed Aspen			49			Cords
	<i>B. T. Aspen</i>			39			<i>Cords</i>
	<i>Quaking Aspen</i>			10			<i>Cords</i>
	Mixed Oak			84			Cords
	<i>Red Oak</i>			84			<i>Cords</i>
	Red Maple			83			Cords
	<i>Red Maple</i>			83			<i>Cords</i>
	Red Pine		6	Cords			
White Spruce	2	Cords					
3	Mixed Aspen	Sawtimber	28.8	MBF	20.1	\$19,241.35	
	<i>B. T. Aspen</i>		16.8	<i>MBF</i>			
	<i>Quaking Aspen</i>		12.0	<i>MBF</i>			
	Red Maple		4.7	MBF			
	Red Oak		15.1	MBF			
	Balsam Fir		Pulpwood	23			Cords
	Mixed Aspen			496			Cords
	<i>B. T. Aspen</i>			215			<i>Cords</i>
	<i>Quaking Aspen</i>			281			<i>Cords</i>
	Mixed Oak			49			Cords
	<i>Red Oak</i>			49			<i>Cords</i>
	Paper Birch			4			Cords
	Red Maple			39			Cords
	<i>Red Maple</i>		39	<i>Cords</i>			
4	Mixed Aspen	Sawtimber	32.4	MBF	24.6	\$23,008.20	
	<i>B. T. Aspen</i>		18.9	<i>MBF</i>			
	<i>Quaking Aspen</i>		13.5	<i>MBF</i>			
	Red Maple		5.3	MBF			
	Red Oak		21.1	MBF			
	Balsam Fir		Pulpwood	27			Cords
	Mixed Aspen			559			Cords
	<i>B. T. Aspen</i>			242			<i>Cords</i>
	<i>Quaking Aspen</i>			317			<i>Cords</i>
	Mixed Oak			72			Cords
	<i>Red Oak</i>		72	<i>Cords</i>			

DESCRIPTION OF TIMBER BY PU (PU), CON'T

PU	MARKET GROUP	PRODUCT	QUANTITY	UNIT	ACRES	ADVERTISE PRICE
4 con't	Paper Birch	Pulpwood	5	Cords		
	Red Maple		45	Cords		
	<i>Red Maple</i>		45	<i>Cords</i>		
5	Black/Red (Hybrid)	Sawtimber	5.4	MBF	12.9	\$18,164.45
	Mixed Aspen		87.0	MBF		
	<i>B. T. Aspen</i>		61.0	<i>MBF</i>		
	<i>Quaking Aspen</i>		26.0	<i>MBF</i>		
	Red Maple	Pulpwood	1.8	MBF		
	Red Oak		0.7	MBF		
	Balsam Fir		46	Cords		
	Mixed Aspen		296	Cords		
	<i>B. T. Aspen</i>		139	<i>Cords</i>		
	<i>Quaking Aspen</i>		157	<i>Cords</i>		
	Mixed Oak		21	Cords		
	<i>/Red (Hybrid) Oak</i>		6	<i>Cords</i>		
	<i>Red Oak</i>		15	<i>Cords</i>		
	Paper Birch		5	Cords		
	Red Maple		84	Cords		
	<i>Red Maple</i>		83	<i>Cords</i>		
	<i>Sugar Maple</i>		1	<i>Cords</i>		
White Spruce	2	Cords				
6	Black/Red (Hybrid)	Sawtimber	8.3	MBF	19.9	\$28,000.45
	Mixed Aspen		134.3	MBF		
	<i>B. T. Aspen</i>		94.2	<i>MBF</i>		
	<i>Quaking Aspen</i>		40.1	<i>MBF</i>		
	Red Maple	Pulpwood	2.9	MBF		
	Red Oak		1.0	MBF		
	Balsam Fir		71	Cords		
	Mixed Aspen		455	Cords		
	<i>B. T. Aspen</i>		214	<i>Cords</i>		
	<i>Quaking Aspen</i>		241	<i>Cords</i>		
	Mixed Oak		33	Cords		
	<i>/Red (Hybrid) Oak</i>		10	<i>Cords</i>		
	<i>Red Oak</i>		23	<i>Cords</i>		
	Paper Birch		8	Cords		
	Red Maple		129	Cords		
	<i>Red Maple</i>		127	<i>Cords</i>		
	<i>Sugar Maple</i>		2	<i>Cords</i>		
White Spruce	4	Cords				
7	Mixed Aspen	Sawtimber	19.5	MBF	18.2	\$31,174.95
	<i>B. T. Aspen</i>		19.5	<i>MBF</i>		
	Red Maple	Pulpwood	0.6	MBF		
	Red Oak		112.9	MBF		
	Mixed Aspen		32	Cords		
	<i>B. T. Aspen</i>		32	<i>Cords</i>		
	Mixed Oak		200	Cords		
	<i>Red Oak</i>		200	<i>Cords</i>		
	Red Maple		27	Cords		
	<i>Red Maple</i>		27	<i>Cords</i>		
Red Pine	10	Cords				
8	Mixed Aspen	Sawtimber	20.6	MBF	19.3	\$32,984.90
	<i>B. T. Aspen</i>		20.6	<i>MBF</i>		
	Red Maple	Pulpwood	0.6	MBF		
	Red Oak		119.7	MBF		
	Mixed Aspen		33	Cords		

DESCRIPTION OF TIMBER BY PU (PU), CON'T

PU	MARKET GROUP	PRODUCT	QUANTITY	UNIT	ACRES	ADVERTISE PRICE
8 con't	<i>B. T. Aspen</i>	<i>Pulpwood</i>	33	<i>Cords</i>		
	Mixed Oak		212	Cords		
	<i>Red Oak</i>		212	<i>Cords</i>		
	Red Maple		28	Cords		
	<i>Red Maple</i>		28	<i>Cords</i>		
	Red Pine		10	Cords		
TOTAL:			743.3	MBF		
TOTAL:			3,471	Cords		

Sale Specific Conditions & Requirements

Sale Name: Deer In The Headlights Mix 2!

Sale Number: 54-999-24 Seq#: 1

1 - Sale Area

1.2 - Boundaries

1.2.1 - Painted boundaries (9/19)

The sale boundary and Payment Unit boundaries are marked and identified by blue, red and yellow paint, and by the wildlife opening (indicated by G0 on the Timber Sale Map). Exterior sale boundary lines against private property are marked with blue paint. Exterior sale boundary lines against state are marked with red paint. Interior Payment Unit boundaries are marked with yellow paint, with the exception of the east boundary of Payment Unit 7 which is unpainted and identified by the wildlife opening, G0. Retention patches are marked with red paint; no harvesting activities may occur within these areas. The painted boundary line trees are not Included Timber and are to be protected. Yellow painted trees designating an interior Payment Unit boundary are only to be cut when all surrounding Payment Units have been paid.

2 - Timber Specifications

2.1 - Included Timber

2.1.1 - Clearcut unit(s) with unmerchantable trees (6/14)

Within Payment Unit(s) 1-8, cut all trees that are two (2) inches or more at DBH, except do not cut white pine. In addition, within Payment Units 7 and 8, do not cut any hemlock.

2.1.11 - Description of timber note (2/04)

Note that species market group labeled Mixed Aspen includes quaking and bigtooth aspen.

2.2 - Utilization

2.2.9 - No chipping permitted (12/08)

Within Payment Unit(s) 7 and 8, no chipping of tops and limbs is permitted. Tree tops and limbs are to be placed on and around severed oak stumps in such a way as to deter deer browse within these units. For more information, contact the Unit Manager or his/her representative.

3 - Payments

3.4 - Damaged Timber

3.4.1 - Damaged timber (7/16)

General Condition and Requirement 3.4 Damaged Timber, defines liquidated damages for undesignated live merchantable trees which are cut or injured. In addition, extreme care should be taken to avoid damage to tree seedlings and saplings.

Within Payment Units 1 and 2, if more than 50% of the pine seedlings or saplings (1/4" to 4.5" DBH) within a specified portion of Payment Units 1 and 2 are damaged, liquidated damages will be assessed at \$250 per acre for all acreage within that specified portion of the sale area that was damaged.

No damage is acceptable to undesignated live merchantable trees. Within the Sale Area, if more than 5% of white pine or hemlock trees (> 4.5" DBH) within a specified area of the sale are damaged, liquidated damages will be assessed for all trees damaged. Rates will be in accordance with General Condition and Requirement 3.4 Damaged Timber.

4 - Transportation

4.1 - Construction

4.1.3 - Slash and earthen piles (8/04)

Piles or windrows of earth along roads and landings that have been widened or constructed shall be leveled. Slash from road maintenance or construction, including stumps, shall be dispersed throughout the sale.

4.1.6 - Road construction (4/24)

Construction of new roads or improvements of existing roads shall be done in such a way as to minimize the environmental and visual impacts. Merchantable trees shall be cut and utilized unless otherwise directed. Non-merchantable trees shall be severed and laid flat on the ground. Slash shall be scattered, and not left in windrows and kept a minimum of 10 feet back from the road edge. Stumps shall be set upright, not left on edge, and be moved at least 10 feet away from the road edge. Disturbed soil shall be feathered into the woods and not left in berms or windrows.

4.1.7 - Road closure (10/11)

All new roads built into the sale must be blocked to vehicle traffic upon completion of the sale. Overgrown roads that are reopened shall be considered new roads. In general, this will require constructing double earthen berms at strategic locations. These roads must be rendered impassable to cars and trucks. All stumps from road building and landing construction must be reserved to block any newly constructed roads upon completion of the sale. These stumps must be scattered along the road system to prohibit vehicular movement. Contact the Sale Administrator for specific details of design and placement.

4.2 - Maintenance

4.2.5 - Two wheel drive condition (2/04)

All existing trail roads on and adjacent to the sale area must be passable by two-wheel drive traffic for the duration of the sale.

4.3 - Public Right-of-Way

4.3.2 - County R-O-W (12/06)

The county must be contacted prior to harvesting in the county road R-O-W. This applies to Payment Unit 2 and Hubert Road.

5 - Operations

5.1 - Notification

5.1.1 - Pre-sale conference (10/16)

A pre-sale conference on site between the Purchaser and sale administrator is required prior to beginning any operations to determine landing and road locations. The Unit Manager or his/her representative must be contacted at least 10 days in advance to schedule the conference.

5.1.4 - Post-sale conference (10/16)

A post-sale conference on site between the Purchaser and sale administrator is required 5 days prior to the completion of active logging operations to determine clean-up and repair of landings, road edges, and the fulfillment of other contract specifications.

5.2 - Conduct of Operations

5.2.1 - Slash

5.2.1.10 - No slash in openings (5/10)

No brush or logging debris is to be left in the maintained wildlife opening which is indicated by G0 on the Timber Sale Map. Any damage to the opening shall be repaired according to specifications of the Unit Manager or his/her representative.

5.2.2 - Hazard Trees/Snags

5.2.2.1 - Den trees (10/16)

Obvious hollow and/or den trees shall be protected and left standing unless they are a safety hazard.

5.2.3 - Operating Restrictions

5.2.3.5 - Oak wilt restriction (1/18)

Within Payment Unit(s) 1-8, unless changed by written agreement, cutting, skidding, hauling within the sale and brushing of access roads to the sale are not permitted during the period of April 15 to July 15. Operations may be allowed if specific steps are taken to prevent damaging uncut oak during the high risk period. Those steps may include completing all road brushing before April 15th and clearing a tree-length buffer along uncut oak cover before April 15th. This is necessary to

reduce the spread of oak wilt. For more information, contact the Unit Manager or his/her representative.

5.2.4 - Dead and Down Creation

5.2.4.7 - Dead and down creation: hare, grouse, deer and other species (5/15)

To improve horizontal cover habitat for snowshoe hare, grouse, deer, and other species, the Purchaser is to push over one 12-inches in diameter tree for every 2 acres. These trees should be tipped over with the root ball still attached so the base of the tree is suspended off the ground. The crown of the fallen tree should be at or near ground level after it is pushed over. Good example of these trees are hardwood species that are in poor form, have excessive branching, or do not contain desirable products. Target species for this process are aspen, red maple, and oak. This is required for Payment Unit(s) 3-6.

5.2.32 - Decking/landing restoration (9/13)

All decking and landing areas must have the surface area restored to a condition equal to or better than before. This is to ensure the proper regeneration of the stand. Wood debris, chips and "cookies" from trimmings must be removed or scattered away from landing and loading areas and may not be windrowed on the edge.

5.4 - Soil Protection

5.4.1 - Rutting restriction, general (7/16)

Operations are to cease immediately if equipment and weather conditions result in rutting of roads and/or skid trails which is 12 inches or greater in depth and 50 feet in length. The Unit Manager or his/her representative may restrict hauling and/or skidding if ruts exceed the specified depth. With the Unit Manager or his/her representative's approval, the Purchaser may return to the area when the risk of rutting has decreased.

5.4.2 - Skid trails (2/04)

Skid trails up and down slopes should be avoided. If however this is unavoidable, these trails will be left in a non-erodible condition using water bars, logs, and slash. Placing of slash on these skid trails while logging is ongoing may alleviate need for any further action. At the direction of the sale administrator, seed, fertilizer, and mulch may also be required.

5.8 - Protection of Endangered Species

5.8.5 - Protection of raptor nests (3/13)

All trees with raptor nests will be protected if found during harvesting operations. Notification will be made to the Unit Manager or his/her representative who will notify the Wildlife Biologist so an on-site evaluation and recommendation can be made, if necessary.

6 - Safety and Fire Prevention

6.2 - Signing

6.2.1 - Road posting (10/20)

The Purchaser is responsible for posting and maintaining caution signs on Hubert Road and Ribble Lake Road prior to beginning operations. The road must be posted at appropriate distances from the Sale Area to warn of logging activity and truck traffic. Signs must be removed when harvest operations are suspended or completed. The Purchaser will provide these signs.



TIMBER SALE MAP

This information provided by authority of Part 525, 1994 PA 451, as amended.

Sale Number	Date	
54-999-24	07/23/2024	
Scale	Page	Of
1:7,920	1	2

Forest Management Unit	County	Mapped By: Michaud
Atlanta Mgt Unit	Montmorency	Cruised By: Michaud

Township	Range	Section(s) and Subdivision(s)
32N	04E	Sec. 6 E1/2SW, W1/2SE, Sec. 7 SESE, Sec. 8 SESW, SWSE, Sec. 17 W1/2NW, NWNE, NWSW, Sec 18. E1/2NE

Cover Type			
A = Aspen	J = Jack Pine	O = Oak	U = Upland Brush
B = Paper Birch	K = Rock	P = Lowland Poplar	UM = Upland Mix Forest
C = Cedar	L = Lowland Brush	Q = Mixed Swamp Conifer	V = Bog or Marsh
D = Treed Bog	LM = Lowland Mix Forest	R = Red Pine	W = White Pine
E = Swamp Hardwoods	M = Maple, Beech, Birch	S = Black Spruce	X = Non Stocked
F = Spruce/Fir	MC = Mixed Conifer	T = Tamarack	Y = Sand
G = Grass	MD = Mixed Deciduous	Z = Water	
H = Hemlock	N = Marsh		

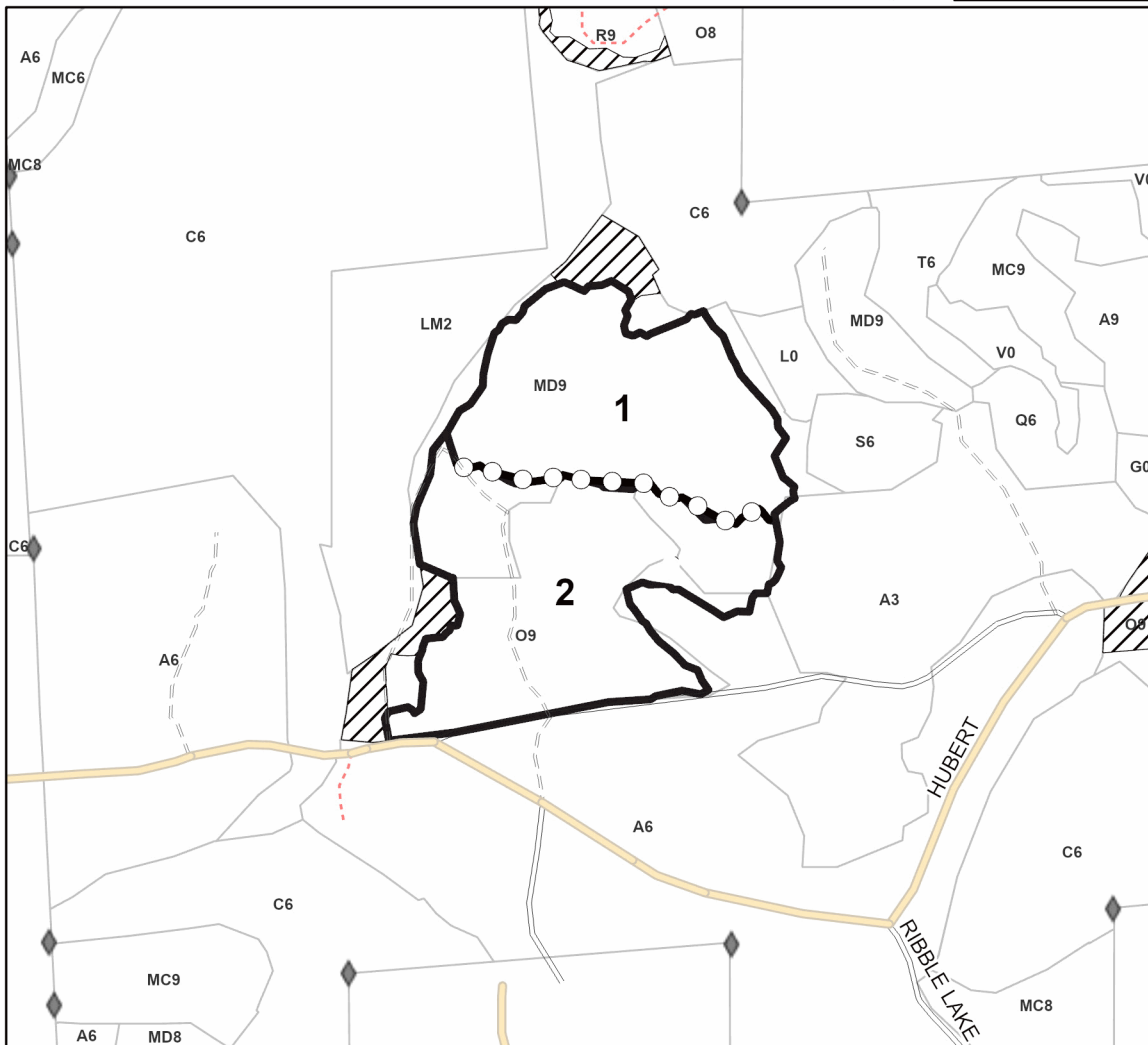
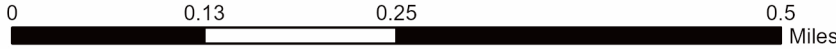
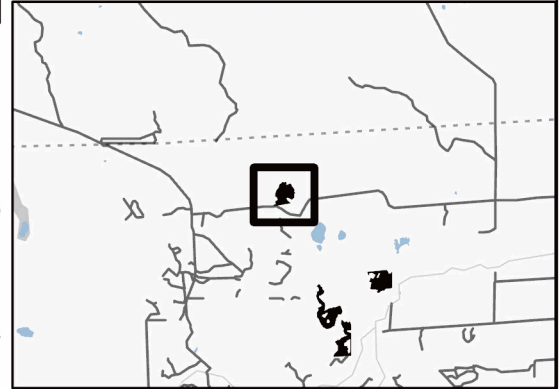
Density	
0 = Non Stocked	5 = Pole Timber Medium
1 = Seedling Sapling Poor	6 = Pole Timber Well
2 = Seedling Sapling Medium	7 = Saw Timber Poor
3 = Seedling Sapling Well	8 = Saw Timber Medium
4 = Pole Timber Poor	9 = Saw Timber Well

PU #	Acres	PU #	Acres
1	14.2	5	12.9
2	18.1	6	19.9
3	20.1	7	18.2
4	24.6	8	19.3

Deer In The Headlights Mix 2!

147.3 Acres

Locator Map (1:150,000)



Legend

- Sale Boundary (Red)
- Payment Unit (Yellow)
- Retention Areas
- Paved Road
- Gravel Road
- County Road - Seasonal
- Private Road
- Secondary Forest Road
- Forest Access Route
- Administrative Access Only
- Non-DNR Road
- Field Grade Corner

Use QR Code to open Map in App





TIMBER SALE MAP

This information provided by authority of Part 525, 1994 PA 451, as amended.

Sale Number	Date	
54-999-24	07/23/2024	
Scale	Page	Of
1:15,840	2	2

Forest Management Unit	County	Mapped By: Michaud
Atlanta Mgt Unit	Montmorency	Cruised By: Michaud

Township	Range	Section(s) and Subdivision(s)
32N	04E	Sec. 6 E1/2SW, W1/2SE, Sec. 7 SESE, Sec. 8 SESW, SWSE, Sec. 17 W1/2NW, NWNE, NWSW, Sec 18. E1/2NE

Cover Type			
A = Aspen	J = Jack Pine	O = Oak	U = Upland Brush
B = Paper Birch	K = Rock	P = Lowland Poplar	UM = Upland Mix Forest
C = Cedar	L = Lowland Brush	Q = Mixed Swamp Conifer	V = Bog or Marsh
D = Treed Bog	LM = Lowland Mix Forest	R = Red Pine	W = White Pine
E = Swamp Hardwoods	M = Maple, Beech, Birch	S = Black Spruce	X = Non Stocked
F = Spruce/Fir	MC = Mixed Conifer	T = Tamarack	Y = Sand
G = Grass	MD = Mixed Deciduous		Z = Water
H = Hemlock	N = Marsh		

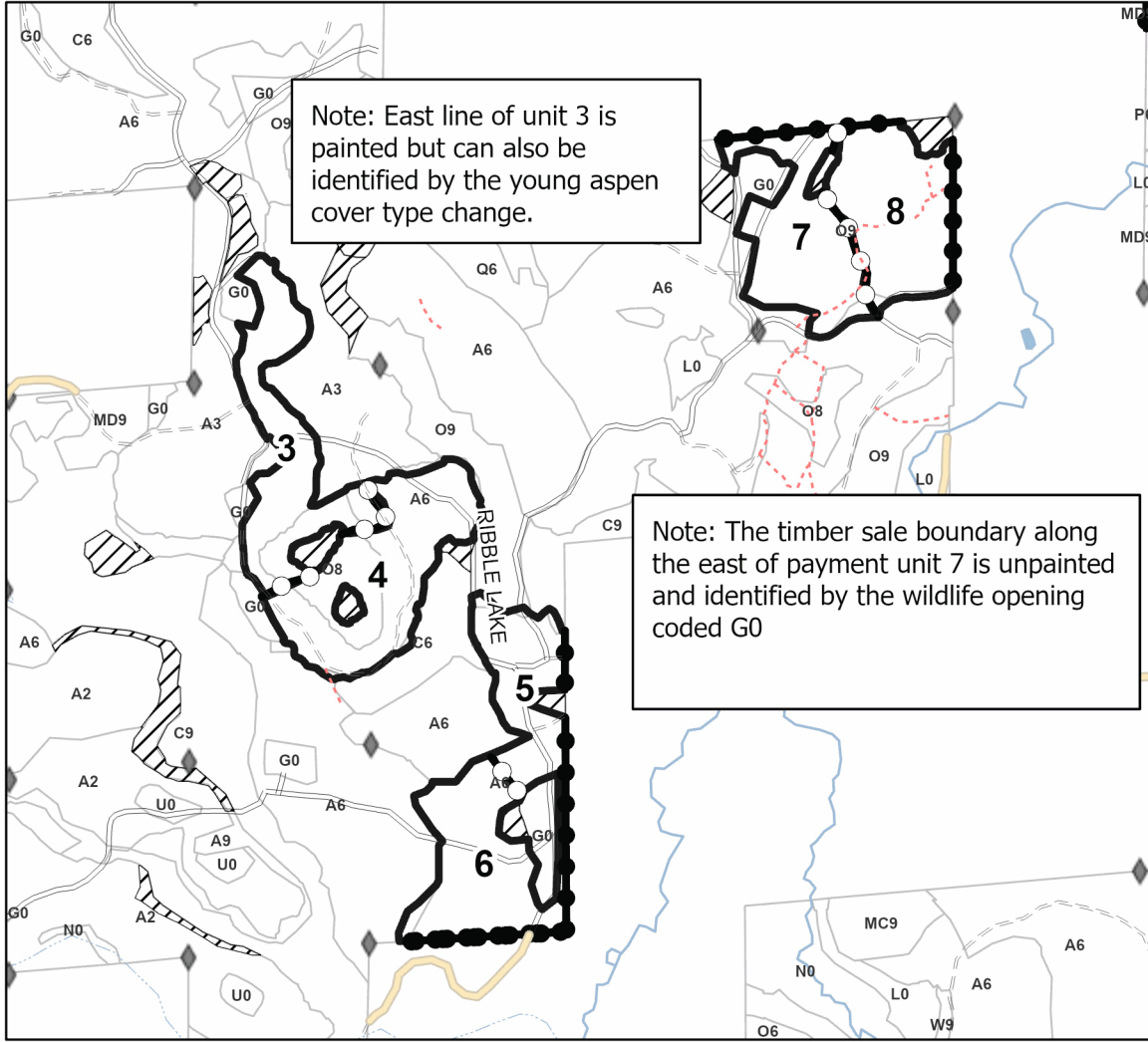
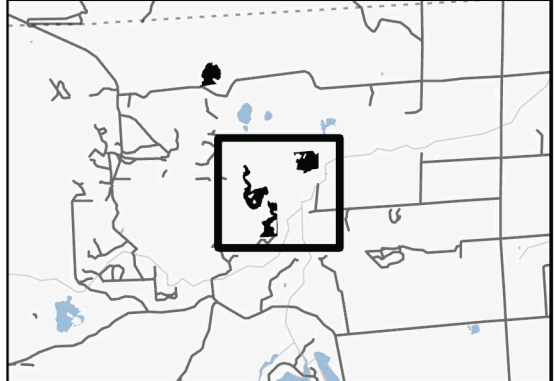
Density	
0 = Non Stocked	5 = Pole Timber Medium
1 = Seedling Sapling Poor	6 = Pole Timber Well
2 = Seedling Sapling Medium	7 = Saw Timber Poor
3 = Seedling Sapling Well	8 = Saw Timber Medium
4 = Pole Timber Poor	9 = Saw Timber Well

PU #	Acres	PU #	Acres
1	14.2	5	12.9
2	18.1	6	19.9
3	20.1	7	18.2
4	24.6	8	19.3

Deer In The Headlights Mix 2!

147.3 Acres

Locator Map (1:150,000)



Note: East line of unit 3 is painted but can also be identified by the young aspen cover type change.

Note: The timber sale boundary along the east of payment unit 7 is unpainted and identified by the wildlife opening coded G0

Legend

- Sale Boundary (Red)
- Payment Unit (Yellow)
- Private Line (Blue)
- Retention Areas
- Paved Road
- Gravel Road
- County Road - Seasonal
- Private Road
- Secondary Forest Road
- Forest Access Route
- Administrative Access Only
- Non-DNR Road
- Field Grade Corner

Use QR Code to open Map in App

