



**DEPARTMENT OF NATURAL RESOURCES
STATE OF MICHIGAN
TIMBER SALE PROSPECTUS #7483**

SCHEDULED SALE DATE AND TIME: **10:00 a.m. (local time) on December 17, 2024.**

LOCATION: **ATLANTA MGMT UNIT, 13501 M 33, ATLANTA, MI 49709.**

CONTACT NAME: Matt Foster

PHONE NUMBER: (989) 619-5921

PROSPECTUS NOTE: The bidder is advised to inspect the sale area and review the location, estimated volumes, operating costs and contract terms of proposed sales. Please be aware that some landowners may request 60 days or more notice for access across their land.

Notice is hereby given that bids will be received by the Unit Manager, ATLANTA MANAGEMENT UNIT, for certain timber on the following described lands:

Antlerless Aspen (54-025-24) / T35N, R03E, SEC. 13, E1/2NE, NESE, S1/2SE.
T35N, R03E, SEC. 14, N1/2NW.

Presque Isle County, Advertised Price \$55,439.20, 76.3 Acres, Aspen, Red Oak.

SALE NOTE: Good access into all Payment Units. A snowmobile trail is within the vicinity but not affected by operations. Winter harvest only for Payment Units 2 & 3 (Dec 1 - March 31) due to forest health concerns. Payment Unit 2 contains some variable density and size timber.

TIMBER SALE INFORMATION

Antlerless Aspen (54-025-24)

T35N, R03E, SEC. 13; T35N, R03E, SEC. 14.

Presque Isle County (Advertised Price \$55,439.20)

SALE NOTE: Good access into all Payment Units. A snowmobile trail is within the vicinity but not affected by operations. Winter harvest only for Payment Units 2 & 3 (Dec 1 - March 31) due to forest health concerns. Payment Unit 2 contains some variable density and size timber.

A timber sale contract for this lump sum, sealed bid timber sale will be awarded to the responsible bidder offering the highest sealed bid price. All units of volume listed below were estimated using the Inventory Manager computer program and the new Michigan taper model. Bids must be at or above the following advertised price for each product and species:

<u>PRODUCTS & SPECIES</u>	<u>ESTIMATED UNITS*</u>	<u>ADVERTISED PRICE</u>
Sawtimber		
Red Maple	4.3 MBF	\$ 59.00 / MBF
Red Oak	18.2 MBF	\$ 183.00 / MBF
Red Pine	66.8 MBF	\$ 120.00 / MBF
White Pine	15.3 MBF	\$ 97.00 / MBF
Pulpwood		
Balsam Fir	43 Cords	\$ 17.20 / Cord
Jack Pine	80 Cords	\$ 11.25 / Cord
Mixed Aspen	1,337 Cords	\$ 20.60 / Cord
Red Maple	105 Cords	\$ 19.70 / Cord
Red Oak	293 Cords	\$ 26.30 / Cord
Red Pine	59 Cords	\$ 39.95 / Cord
White Pine	37 Cords	\$ 28.15 / Cord

* The total volume is statistically estimated within plus (+) or minus (-) 19.80 percent. There are an estimated 2,196 cords on this timber sale, plus or minus 435 cords at the 95% confidence level. The estimated units are final and not subject to adjustment. Prospective bidders are urged to examine this timber and to make their own estimates of quantity and quality.

BOND AND PAYMENT SCHEDULE:

1. A bond in the amount of \$2,771.96 to insure faithful performance of the conditions of the contract will be deposited by the successful bidder within 21 days of the sale award.
2. Cutting in any sale or unit without the required advance payment would be considered a trespass.
3. Total payment must be paid in advance or according to the following schedule :
 - (a) Ten percent (10%) of the sale value must be paid within 21 days of the sale award.
 - (b) The 10% down payment will be credited towards the first unit cut.
 - (c) Payment for each of the following units must be made before cutting begins in that unit:

PAYMENT UNIT NUMBER	PERCENT OF TOTAL SALE VALUE
01	11.7%
02	38.5%
03	49.8%
4. If no cutting takes place, the 10% down payment will not be refunded.
5. Operations on the contract issued will terminate on 12/31/2027.

SALE STATISTICS

Volumes were calculated in cubic feet using the Michigan taper model. Cubic foot volume includes all wood inside bark for the product indicated. For display purposes, cubic feet were converted to cords and MBF using a simple conversion factor, e.g. 79 cubic feet per cord and 185 cubic feet per MBF. The cubic foot volumes are precise; the cords and MBF volumes are not. Cubic foot volume cannot be directly converted to cords or boards with precision.

SALE VOLUMES

The total estimated sale volume may not equal the sum of the species/products due to the nature of statistical calculations associated with double sampling methodology.

VOLUME		STATISTICAL RANGE IN CORDS		
TOTAL CUBIC FEET	TOTAL CORDS	PERCENT ERROR	MINIMUM	MAXIMUM
173,495	2,196	19.80%	1,761	2,631

VDU VOLUMES

A VDU is a Volume Determination Unit. Volumes and their associated statistics are calculated at the VDU level and summarized to the sale level. There is often a one to one relationship between a VDU and a Payment Unit, but not always, depending on the cruise design. Refer to the VDU TO PAYMENT UNIT table.

VDU	VOLUME		PERCENT ERROR	RANGE IN CORDS	
	TOTAL CUBIC FEET	TOTAL CORDS		MINIMUM	MAXIMUM
15	25,585	324	46.75%	172	475
53	73,265	927	24.82%	697	1,158
54	74,646	945	36.87%	596	1,293
TOTAL:	173,495	2,196		1,466	2,926

VDU TO PAYMENT UNIT

When a VDU is associated with more than one Payment Unit (PU), the VDU volumes are assigned to the PU based on acres of the VDU within the PU.

VDU	VDU ACRES	PU	PU ACRES
15	12.6	1	12.6
53	41.1	2	35.8
		3	5.3
54	22.6	3	22.6
TOTAL:	76.3		76.3

DESCRIPTION OF TIMBER BY PU (PU)

PU	MARKET GROUP	PRODUCT	QUANTITY	UNIT	ACRES	ADVERTISE PRICE			
1	Red Maple	Sawtimber	2.8	MBF	12.6	\$6,480.60			
	Red Pine		6.9	MBF					
	Balsam Fir	Pulpwood	38	Cords					
	Jack Pine		74	Cords					
	Mixed Aspen		152	Cords					
	<i>B. T. Aspen</i>		152	<i>Cords</i>					
	Red Maple		32	Cords					
	Red Pine		6	Cords					
	2	Red Oak	Sawtimber	10.1			MBF	35.8	\$21,318.75
Red Pine			14.0	MBF					
White Pine			10.7	MBF					
Jack Pine		Pulpwood	5	Cords					
Mixed Aspen			456	Cords					
<i>B. T. Aspen</i>			456	<i>Cords</i>					
Red Maple			7	Cords					
Red Oak			206	Cords					
Red Pine			24	Cords					
White Pine			28	Cords					
3		Red Maple	Sawtimber	1.5	MBF	27.9	\$27,639.85		
	Red Oak		8.1	MBF					
	Red Pine		45.9	MBF					
	White Pine		4.6	MBF					
	Balsam Fir	Pulpwood	5	Cords					
	Jack Pine		1	Cords					
	Mixed Aspen		729	Cords					
	<i>B. T. Aspen</i>		566	<i>Cords</i>					
	<i>Quaking Aspen</i>		163	<i>Cords</i>					
	Red Maple		66	Cords					
	Red Oak		87	Cords					
	Red Pine		29	Cords					
	White Pine		9	Cords					
	TOTAL:			104.6	MBF				
	TOTAL:			1,954	Cords				

Sale Specific Conditions & Requirements

Sale Name: Antlerless Aspen

Sale Number: 54-025-24 Seq#: 1

1 - Sale Area

1.2 - Boundaries

1.2.1 - Painted boundaries (9/19)

The sale boundary and Payment Unit boundaries are marked and identified by blue, red and yellow paint. Exterior sale boundary lines against private property are marked with blue paint. Exterior sale boundary lines against state are marked with red paint. Interior Payment Unit boundaries are marked with yellow paint. Retention patches are marked with Red X's; no harvesting activities may occur within these areas. The painted boundary line trees are not Included Timber and are to be protected. Yellow painted trees designating an interior Payment Unit boundary are only to be cut when all surrounding Payment Units have been paid.

2 - Timber Specifications

2.1 - Included Timber

2.1.1 - Clearcut unit(s) with unmerchantable trees (6/14)

Within Payment Unit(s) 1-3, cut all trees that are two (2) inches or more at DBH, except do not cut any trees marked in green paint. In addition, within Payment Unit 1, do not cut any white pine.

Special protection trees identified in accordance with condition 3.4.2, within clearcutting unit boundaries, are not Included Timber and are to be protected.

3 - Payments

3.4 - Damaged Timber

3.4.1 - Damaged timber (7/16)

General Condition and Requirement 3.4 Damaged Timber, defines liquidated damages for undesignated live merchantable trees which are cut or injured. In addition, extreme care should be taken to avoid damage to tree seedlings and saplings.

Within Payment Unit 1, if more than 50% of white pine seedlings or saplings (1/4" to 4.5" DBH) within a specified portion of the Payment Unit are damaged, liquidated damages will be assessed at \$500 per acre for all acreage within that specified portion of the Sale Area that was damaged.

No damage is acceptable to undesignated live merchantable trees. Within Payment Unit 1, if more than 5% of trees (> 4.5" DBH) within a specified area of the sale are damaged, liquidated damages will be assessed for all trees damaged. Rates will be in accordance with General Condition and Requirement 3.4 Damaged Timber.

3.4.2 - Special Protection Trees (4/14)

The Purchaser shall not cut live or dead special protection trees within cutting units or clearings. Special protection trees are marked with green paint. If the Purchaser's operations have cut or damaged special protection trees through carelessness, the Purchaser shall pay \$300 as fixed, agreed and liquidated damages for each special protection tree cut or damaged. Such payment does not constitute ownership of the undesignated timber.

4 - Transportation

4.1 - Construction

4.1.3 - Slash and earthen piles (8/04)

Piles or windrows of earth along roads and landings that have been widened or constructed shall be leveled. Slash from road maintenance or construction, including stumps, shall be dispersed throughout the sale, chipped, utilized or otherwise removed from the sale.

4.1.12 - No new roads (1/12)

No new roads will be permitted in any Payment Unit. All operations are limited to existing roads. Only skid trails and landings will be allowed.

4.2 - Maintenance

4.2.5 - Two wheel drive condition (2/04)

All existing trail roads on and adjacent to the sale area must be passable by two-wheel drive traffic for the duration of the sale.

5 - Operations

5.1 - Notification

5.1.4 - Post-sale conference (10/16)

A post-sale conference on site between the Purchaser and sale administrator is required 5 days prior to the completion of active logging operations to determine clean-up and repair of landings, road edges, and the fulfillment of other contract specifications.

5.2 - Conduct of Operations

5.2.1 - Slash

5.2.1.8 - Slash height (12/08)

No slash or tree tops may exceed 36 inches in height.

5.2.2 - Hazard Trees/Snags

5.2.2.1 - Den trees (10/16)

Obvious hollow and/or den trees shall be protected and left standing unless they are a safety hazard.

5.2.3 - Operating Restrictions

5.2.3.1 - Operating restrictions (9/11)

Within Payment Unit(s) 2-3, cutting, skidding, and hauling are limited to the period of December 1 to March 31. This restriction is because of Forest Health Concerns within the area.

5.2.4 - Dead and Down Creation

5.2.4.4 - Dead and down creation, grouse (6/18)

To encourage grouse and other wildlife, in Payment Unit(s) 1-3 leave one 12-inch or larger diameter (or largest diameter trees within stand) whole tree on the ground for every 2 acres, preferably a hardwood species such as oak or maple or if no hardwoods are present, a pine species (white or red). These trees will be evenly scattered throughout the unit, preferably at least two chains from any roads, two-tracks, or trails open to vehicles. This can be an unmerchantable piece or a full tree.

5.2.32 - Decking/landing restoration (9/13)

All decking and landing areas must have the surface area restored to a condition equal to or better than before. This is to ensure the proper regeneration of the stand. Wood debris, chips and "cookies" from trimmings must be removed or scattered away from landing and loading areas and may not be windrowed on the edge.

5.2.38 - No decking against live trees (2/04)

Cut products may not be decked against unmarked or designated leave trees.

5.4 - Soil Protection

5.4.5 - Soil caution (11/04)

Portions of Payment Unit 3 contain seasonally wet areas. Use caution when operating in these areas.

5.8 - Protection of Endangered Species

5.8.5 - Protection of raptor nests (3/13)

All trees with raptor nests will be protected if found during harvesting operations. Notification will be made to the Unit Manager or his/her representative who will notify the Wildlife Biologist so an on-site evaluation and recommendation can be made, if necessary.

6 - Safety and Fire Prevention

6.2 - Signing

6.2.1 - Road posting (10/20)

The Purchaser is responsible for posting and maintaining caution signs on Beach Grove Highway and/or Silver Creek Road prior to beginning operations. The road must be posted at appropriate distances from the Sale Area to warn of logging activity and truck traffic. Signs must be removed when harvest operations are suspended or completed. The Purchaser will provide these signs.

TIMBER SALE MAP

This information provided by authority of Part 525, 1994 PA 451, as amended.

Sale Number	Date	
54-025-24	09/23/2024	
Scale	Page	Of
1:10,000	1	2

Forest Management Unit	County	Mapped By: T.Kubitskey
Atlanta Mgt Unit	Presque Isle	Cruised By: T. Kubitskey

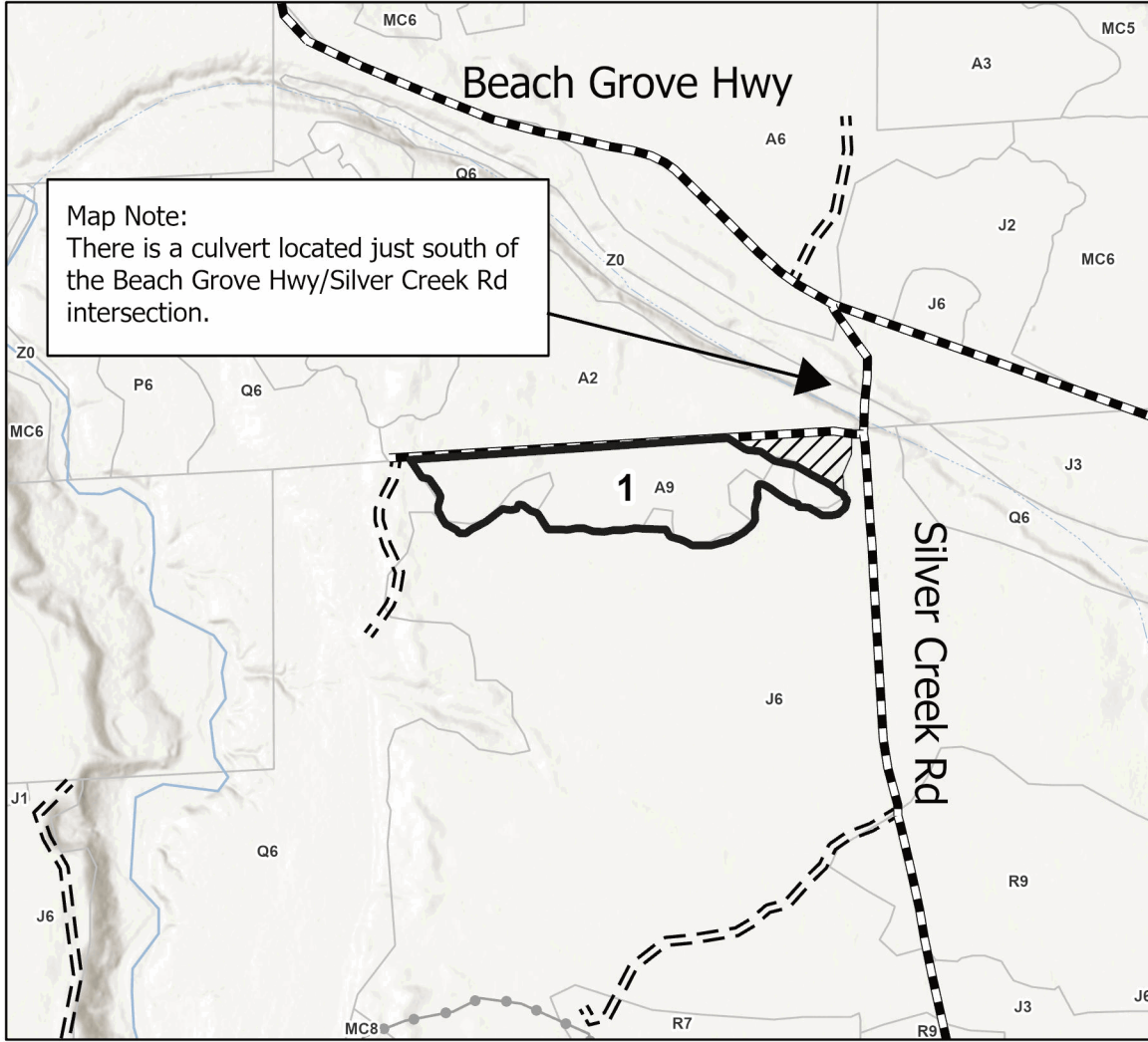
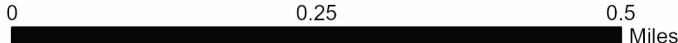
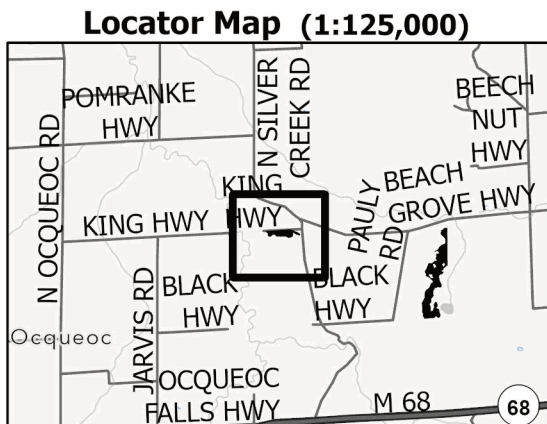
Township	Range	Section(s) and Subdivision(s)
35N	03E	Sec. 13 E1/2NE,NESE,S1/2SE; Sec. 14 N1/2NW;

Cover Type			
A = Aspen	J = Jack Pine	O = Oak	U = Upland Brush
B = Paper Birch	K = Rock	P = Lowland Poplar	UM = Upland Mix Forest
C = Cedar	L = Lowland Brush	Q = Mixed Swamp Conifer	V = Bog or Marsh
D = Treed Bog	LM = Lowland Mix Forest	R = Red Pine	W = White Pine
E = Swamp Hardwoods	M = Maple, Beech, Birch	S = Black Spruce	X = Non Stocked
F = Spruce/Fir	MC = Mixed Conifer	T = Tamarack	Y = Sand
G = Grass	MD = Mixed Deciduous	Z = Water	
H = Hemlock	N = Marsh		

Density	
0 = Non Stocked	5 = Pole Timber Medium
1 = Seedling Sapling Poor	6 = Pole Timber Well
2 = Seedling Sapling Medium	7 = Saw Timber Poor
3 = Seedling Sapling Well	8 = Saw Timber Medium
4 = Pole Timber Poor	9 = Saw Timber Well

PU #	Acres
1	12.6
2	35.8
3	27.9

Antlerless Aspen
76.3 Acres
Compartment 148



Legend	
	Sale Boundary (Red)
	Stand
	Retention Areas (Red X's)
	Recreational Trail
	Intermittent Stream
	Perennial River
	Primary Forest Road
	Forest Access Route
	Administrative Access Only
	Paved Road
	Government Gravel/Dirt
	Private Gravel/Dirt

Use QR Code to open Map in App



TIMBER SALE MAP

This information provided by authority of Part 525, 1994 PA 451, as amended.

Sale Number	Date	
54-025-24	09/23/2024	
Scale	Page	Of
1:15,840	2	2

Forest Management Unit	County	Mapped By: T. Kubitskey
Atlanta Mgt Unit	Presque Isle	Cruised By: T. Kubitskey

Township	Range	Section(s) and Subdivision(s)
35N	03E	Sec. 13 E1/2NE,NESE,S1/2SE; Sec. 14 N1/2NW;

Cover Type			
A = Aspen	J = Jack Pine	O = Oak	U = Upland Brush
B = Paper Birch	K = Rock	P = Lowland Poplar	UM = Upland Mix Forest
C = Cedar	L = Lowland Brush	Q = Mixed Swamp Conifer	V = Bog or Marsh
D = Treed Bog	LM = Lowland Mix Forest	R = Red Pine	W = White Pine
E = Swamp Hardwoods	M = Maple, Beech, Birch	S = Black Spruce	X = Non Stocked
F = Spruce/Fir	MC = Mixed Conifer	T = Tamarack	Y = Sand
G = Grass	MD = Mixed Deciduous	Z = Water	
H = Hemlock	N = Marsh		

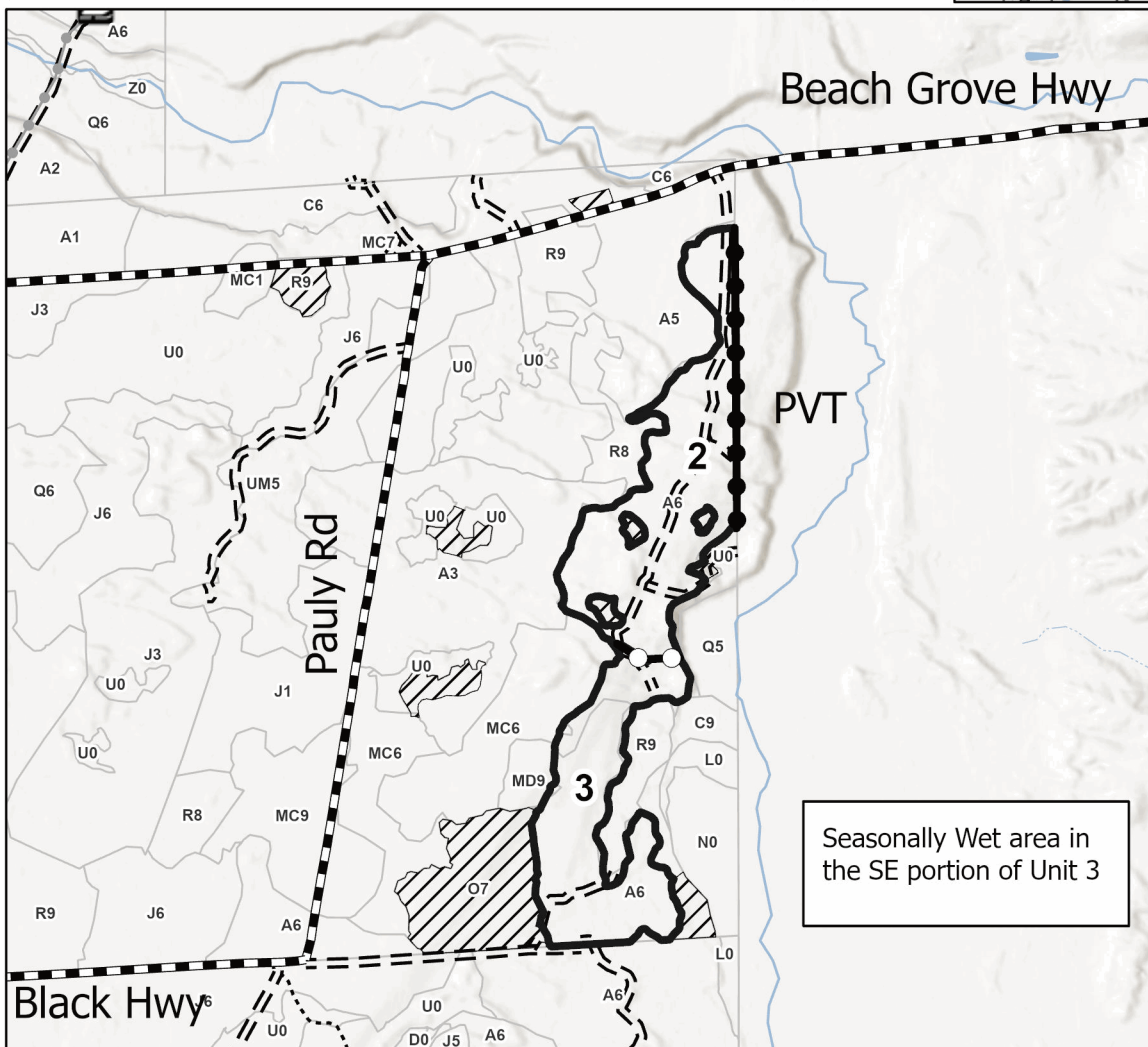
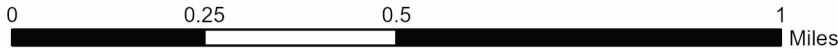
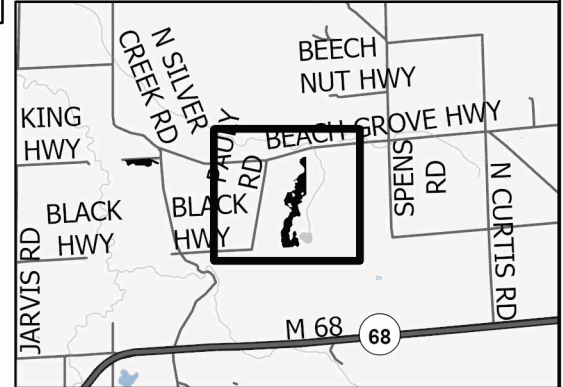
Density	
0 = Non Stocked	5 = Pole Timber Medium
1 = Seedling Sapling Poor	6 = Pole Timber Well
2 = Seedling Sapling Medium	7 = Saw Timber Poor
3 = Seedling Sapling Well	8 = Saw Timber Medium
4 = Pole Timber Poor	9 = Saw Timber Well

PU #	Acres
1	12.6
2	35.8
3	27.9

Antlerless Aspen
76.3 Acres
Compartment 148



Locator Map (1:125,000)



Legend

- Sale Boundary (Red)
- Payment Unit (Yellow)
- Private Line (Blue)
- Stand
- Retention Areas (Red X's)
- Recreational Trail
- Intermittent Stream
- Perennial River
- Primary Forest Road
- Forest Access Route
- Administrative Access Only
- Paved Road
- Government Gravel/Dirt
- Private Gravel/Dirt

Use QR Code to open Map in App



Seasonally Wet area in the SE portion of Unit 3