



**DEPARTMENT OF NATURAL RESOURCES  
STATE OF MICHIGAN  
TIMBER SALE PROSPECTUS #7481**

SCHEDULED SALE DATE AND TIME: **10:00 a.m. (local time) on October 22, 2024.**

LOCATION: **ATLANTA MGMT UNIT, 13501 M 33, ATLANTA, MI 49709.**

CONTACT NAME: Matt Foster

PHONE NUMBER: (989) 619-5921

PROSPECTUS NOTE: The bidder is advised to inspect the sale area and review the location, estimated volumes, operating costs and contract terms of proposed sales. Please be aware that some landowners may request 60 days or more notice for access across their land.

Notice is hereby given that bids will be received by the Unit Manager, ATLANTA MANAGEMENT UNIT, for certain timber on the following described lands:

Big Cut Mix1 (54-500-24) / T34N, R03E, SEC. 11, NESE.

T34N, R03E, SEC. 12, SWNW,N1/2SW,SWSW.

T34N, R03E, SEC. 13, N1/2NW,NWNE.

T34N, R03E, SEC. 14, NE.

Presque Isle County, Advertised Price \$156,864.15, 128.9 Acres, Aspen, Hardwood.

SALE NOTE: Good access from Big Cut HWY. Some seasonal restrictions in all units, oak wilt in units 1-5. Dry summer or frozen winter for units 3 and 4. Mixed aspen saw contains bigtooth and quaking aspen, mixed aspen pulp contains bigtooth, quaking aspen, and 11 cords of balsam poplar. Mixed oak pulp contains 530 red, 37 white, 27 northern pin, and 5 hybrid oak cords. N. white cedar pulp includes 3.2 MBF in the pulp volume.

A recreation site such as a trail, pathway, or campground is within the sale area or the vicinity. Certain restrictions/specifications may be applicable including time restrictions.

# TIMBER SALE INFORMATION

## Big Cut Mix1 (54-500-24)

T34N, R03E, SEC. 11; T34N, R03E, SEC. 12; T34N, R03E, SEC. 13; T34N, R03E, SEC. 14.

Presque Isle County (Advertised Price \$156,864.15)

SALE NOTE: Good access from Big Cut HWY. Some seasonal restrictions in all units, oak wilt in units 1-5. Dry summer or frozen winter for units 3 and 4. Mixed aspen saw contains bigtooth and quaking aspen, mixed aspen pulp contains bigtooth, quaking aspen, and 11 cords of balsam poplar. Mixed oak pulp contains 530 red, 37 white, 27 northern pin, and 5 hybrid oak cords. N. white cedar pulp includes 3.2 MBF in the pulp volume.

A recreation site such as a trail, pathway, or campground is within the sale area or the vicinity. Certain restrictions/specifications may be applicable including time restrictions.

A timber sale contract for this lump sum, sealed bid timber sale will be awarded to the responsible bidder offering the highest sealed bid price. All units of volume listed below were estimated using the Inventory Manager computer program and the new Michigan taper model. Bids must be at or above the following advertised price for each product and species:

<u>PRODUCTS &amp; SPECIES</u>	<u>ESTIMATED UNITS*</u>	<u>ADVERTISED PRICE</u>
<b>Sawtimber</b>		
Mixed Aspen	177.5 MBF	\$ 93.00 / MBF
Northern Pin Oak	5.4 MBF	\$ 122.00 / MBF
Red Maple	19.7 MBF	\$ 63.00 / MBF
Red Oak	279.4 MBF	\$ 208.00 / MBF
Red Pine	112.7 MBF	\$ 131.00 / MBF
White Oak	22.3 MBF	\$ 79.00 / MBF
White Pine	24.5 MBF	\$ 114.00 / MBF
<b>Pulpwood</b>		
Balsam Fir	306 Cords	\$ 19.40 / Cord
Jack Pine	48 Cords	\$ 12.45 / Cord
Mixed Aspen	699 Cords	\$ 23.25 / Cord
Mixed Oak	599 Cords	\$ 30.75 / Cord
N. White Cedar	23 Cords	\$ 9.90 / Cord
Paper Birch	60 Cords	\$ 15.50 / Cord
Red Maple	328 Cords	\$ 22.25 / Cord
Red Pine	225 Cords	\$ 43.45 / Cord
White Pine	53 Cords	\$ 27.00 / Cord
White Spruce	16 Cords	\$ 9.70 / Cord

\* The total volume is statistically estimated within plus (+) or minus (-) 14.32 percent. There are an estimated 3,857 cords on this timber sale, plus or minus 553 cords at the 95% confidence level. The estimated units are final and not subject to adjustment. Prospective bidders are urged to examine this timber and to make their own estimates of quantity and quality.

### **BOND AND PAYMENT SCHEDULE:**

1. A bond in the amount of \$7,843.21 to insure faithful performance of the conditions of the contract will be deposited by the successful bidder within 21 days of the sale award.
2. Cutting in any sale or unit without the required advance payment would be considered a trespass.
3. Total payment must be paid in advance or according to the following schedule :
  - (a) Ten percent (10%) of the sale value must be paid within 21 days of the sale award.
  - (b) The 10% down payment will be credited towards the first unit cut.
  - (c) Payment for each of the following units must be made before cutting begins in that unit:

PAYMENT UNIT NUMBER	PERCENT OF TOTAL SALE VALUE
01	22.1%
02	22.5%
03	14.4%
04	16.6%
05	24.4%

4. If no cutting takes place, the 10% down payment will not be refunded.
5. Operations on the contract issued will terminate on 12/31/2027.

### **SALE STATISTICS**

Volumes were calculated in cubic feet using the Michigan taper model. Cubic foot volume includes all wood inside bark for the product indicated. For display purposes, cubic feet were converted to cords and MBF using a simple conversion factor, e.g. 79 cubic feet per cord and 185 cubic feet per MBF. The cubic foot volumes are precise; the cords and MBF volumes are not. Cubic foot volume cannot be directly converted to cords or boards with precision.

### SALE VOLUMES

The total estimated sale volume may not equal the sum of the species/products due to the nature of statistical calculations associated with double sampling methodology.

VOLUME			STATISTICAL RANGE IN CORDS	
TOTAL CUBIC FEET	TOTAL CORDS	PERCENT ERROR	MINIMUM	MAXIMUM
304,742	3,857	14.32%	3,305	4,410

### VDU VOLUMES

A VDU is a Volume Determination Unit. Volumes and their associated statistics are calculated at the VDU level and summarized to the sale level. There is often a one to one relationship between a VDU and a Payment Unit, but not always, depending on the cruise design. Refer to the VDU TO PAYMENT UNIT table.

VDU	VOLUME		PERCENT ERROR	RANGE IN CORDS	
	TOTAL CUBIC FEET	TOTAL CORDS		MINIMUM	MAXIMUM
52	57,742	731	27.96%	527	935
59	49,917	632	29.40%	446	818
64	7,892	100	50.57%	49	150
74	32,996	418	42.41%	241	595
79	99,024	1,253	33.46%	834	1,673
92	57,172	724	25.09%	542	905
<b>TOTAL:</b>	<b>304,742</b>	<b>3,857</b>		<b>2,639</b>	<b>5,076</b>

### VDU TO PAYMENT UNIT

When a VDU is associated with more than one Payment Unit (PU), the VDU volumes are assigned to the PU based on acres of the VDU within the PU.

VDU	VDU ACRES	PU	PU ACRES
52	23.5	1	23.1
		2	0.4
59	26.1	1	0.5
		2	25.6
64	6.9	3	6.9
74	11.9	3	11.9
79	40.8	3	10.1
		4	30.7
92	19.7	5	19.7
<b>TOTAL:</b>	<b>128.9</b>		<b>128.9</b>

**DESCRIPTION OF TIMBER BY PU (PU)**

PU	MARKET GROUP	PRODUCT	QUANTITY	UNIT	ACRES	ADVERTISE PRICE	
1	Mixed Aspen	Sawtimber	7.1	MBF	23.6	\$34,601.85	
	<i>B. T. Aspen</i>		7.1	<i>MBF</i>			
	Red Oak		54.4	MBF			
	Red Pine		73.1	MBF			
	White Oak		0.1	MBF			
	White Pine		4.4	MBF			
	Jack Pine		Pulpwood	32			Cords
	Mixed Aspen			109			Cords
	<i>B. T. Aspen</i>			109			<i>Cords</i>
	Mixed Oak			129			Cords
	<i>Red Oak</i>			112			<i>Cords</i>
	<i>White Oak</i>			17			<i>Cords</i>
	Red Pine			123			Cords
	White Pine			11			Cords
2	Mixed Aspen	Sawtimber	0.1	MBF	26.0	\$35,318.00	
	<i>B. T. Aspen</i>		0.1	<i>MBF</i>			
	Red Oak		96.2	MBF			
	Red Pine		26.3	MBF			
	White Oak		3.1	MBF			
	White Pine		11.2	MBF			
	Jack Pine		Pulpwood	1			Cords
	Mixed Aspen			2			Cords
	<i>B. T. Aspen</i>			2			<i>Cords</i>
	Mixed Oak			198			Cords
	<i>Red Oak</i>			196			<i>Cords</i>
	<i>White Oak</i>			2			<i>Cords</i>
	Red Maple			5			Cords
	Red Pine			72			Cords
White Pine	35	Cords					
3	Mixed Aspen	Sawtimber	87.2	MBF	28.9	\$22,564.15	
	<i>B. T. Aspen</i>		19.8	<i>MBF</i>			
	<i>Quaking Aspen</i>		67.4	<i>MBF</i>			
	Northern Pin Oak		2.9	MBF			
	Red Maple		13.9	MBF			
	Red Oak		3.4	MBF			
	Red Pine		2.2	MBF			
	Balsam Fir		Pulpwood	139			Cords
	<i>Balsam Fir</i>			<i>Sawtimber</i>			1.7
	<i>Balsam Fir</i>		<i>Pulpwood</i>	136			<i>Cords</i>
	Jack Pine		4	Cords			
	Mixed Aspen		184	Cords			
	<i>B. T. Aspen</i>		99	<i>Cords</i>			
	<i>Balsam Poplar</i>		6	<i>Cords</i>			
	<i>Quaking Aspen</i>		79	<i>Cords</i>			
	Mixed Oak		28	Cords			
	<i>Red (Hybrid) Oak</i>		1	<i>Cords</i>			
	<i>Northern Pin Oak</i>		18	<i>Cords</i>			
	<i>Red Oak</i>		9	<i>Cords</i>			
	N. White Cedar		12	Cords			
	<i>N. White Cedar</i>		<i>Sawtimber</i>	2.0			<i>MBF</i>
	<i>N. White Cedar</i>			<i>Pulpwood</i>			8
	Paper Birch		40	Cords			
	Red Maple		149	Cords			
	Red Pine		4	Cords			
	White Spruce		12	Cords			

**DESCRIPTION OF TIMBER BY PU (PU), CON'T**

PU	MARKET GROUP	PRODUCT	QUANTITY	UNIT	ACRES	ADVERTISE PRICE	
4	Mixed Aspen	Sawtimber	62.6	MBF	30.7	\$26,107.40	
	<i>B. T. Aspen</i>		41.2	<i>MBF</i>			
	<i>Quaking Aspen</i>		21.4	<i>MBF</i>			
	Northern Pin Oak		2.5	MBF			
	Red Maple		5.8	MBF			
	Red Oak		10.4	MBF			
	Red Pine		6.5	MBF			
	Balsam Fir		Pulpwood	135			Cords
	<i>Balsam Fir</i>			135			<i>Cords</i>
	Jack Pine			11			Cords
	Mixed Aspen			361			Cords
	<i>B. T. Aspen</i>			213			<i>Cords</i>
	<i>Balsam Poplar</i>			5			<i>Cords</i>
	<i>Quaking Aspen</i>			143			<i>Cords</i>
	Mixed Oak			42			Cords
	<i>Red (Hybrid) Oak</i>			4			<i>Cords</i>
	<i>Northern Pin Oak</i>	9		<i>Cords</i>			
	<i>Red Oak</i>	29	<i>Cords</i>				
	N. White Cedar	Sawtimber	11	Cords			
	<i>N. White Cedar</i>		1.2	<i>MBF</i>			
	<i>N. White Cedar</i>		9	<i>Cords</i>			
	Paper Birch		20	Cords			
	Red Maple		141	Cords			
Red Pine	13	Cords					
White Spruce	4	Cords					
5	Mixed Aspen	Sawtimber	20.5	MBF	19.7	\$38,272.75	
	<i>B. T. Aspen</i>		20.5	<i>MBF</i>			
	Red Oak		115.0	MBF			
	Red Pine		4.6	MBF			
	White Oak		19.1	MBF			
	White Pine		8.9	MBF			
	Balsam Fir		Pulpwood	32			Cords
	<i>Balsam Fir</i>			32			<i>Cords</i>
	Mixed Aspen			43			Cords
	<i>B. T. Aspen</i>			43			<i>Cords</i>
	Mixed Oak			202			Cords
	<i>Red Oak</i>			184			<i>Cords</i>
	<i>White Oak</i>			18			<i>Cords</i>
	Red Maple			33			Cords
	Red Pine			13			Cords
	White Pine			7			Cords
TOTAL:			641.5	MBF			
TOTAL:			2,357	Cords			

## Sale Specific Conditions & Requirements

Sale Name: Big Cut Mix1

Sale Number: 54-500-24 Seq#: 1

### 1 - Sale Area

#### 1.2 - Boundaries

##### 1.2.1 - Painted boundaries (9/19)

The sale boundary and Payment Unit boundaries are marked and identified by blue, red and yellow paint. Exterior sale boundary lines against private property are marked with blue paint. Exterior sale boundary lines against state are marked with red paint. Interior Payment Unit boundaries are marked with yellow paint. Retention patches are marked with red paint; no harvesting activities may occur within these areas. The painted boundary line trees are not Included Timber and are to be protected. Yellow painted trees designating an interior Payment Unit boundary are only to be cut when all surrounding Payment Units have been paid.

### 2 - Timber Specifications

#### 2.1 - Included Timber

##### 2.1.1 - Clearcut unit(s) with unmerchantable trees (6/14)

Within Payment Unit(s) 1-5, cut all trees that are two (2) inches or more at DBH, except do not cut white pine and green painted legacy trees within Payment Unit(s) 3 and 4. In addition, protect all pine regeneration (<4.5" DBH) in Payment Unit(s) 2 and 5, in accordance with sale spec 3.4.1.

#### 2.2 - Utilization

##### 2.2.2 - Chipping required (2/18)

Payment Unit 1 must be chip harvested to facilitate subsequent planting operations. The Purchaser has the option to produce sawlogs or pulpwood bolts, but the remaining portion of the trees must be chipped and hauled. Products may be produced as roundwood and forwarded to decking areas in final product length, but the tops must be left intact and skidded to the landing for chipping in order to minimize the amount of residual slash. If market conditions limit the practicality of chipping, tops and slash must be arranged in a way that will not inhibit future planting operations, as directed by the Sale Administrator. The requirement to retain approximately 1/6 to 1/3 of tree tops and limbs less than four inches in diameter is still applicable (G. C. & R. 2.2).

##### 2.2.3 - Stump heights (4/07)

Stump heights within Payment Unit 1 shall not exceed 6 inches for all trees. This is in order to facilitate planting operations.

### 3 - Payments

#### 3.3 - Pre-measured Sales

##### 3.3.4 - Dividing payment units (7/14)

Payment Unit(s) 1-5 may be divided at the request of the Purchaser and upon approval of the Unit Manager. Dividing Payment Units is a contract modification which requires a Timber Sale Contract Amendment. There will be only one division per Payment Unit.

#### 3.4 - Damaged Timber

##### 3.4.1 - Damaged timber (7/16)

General Condition and Requirement 3.4 Damaged Timber, defines liquidated damages for undesignated live merchantable trees which are cut or injured. In addition, extreme care should be taken to avoid damage to white pine seedlings and saplings (1/4" to 4.5" DBH) within Payment Unit(s) 2 and 5. Within Payment Unit(s) 3 and 4 no damage is acceptable to undesignated live merchantable trees. Within the Sale Area, if more than 5% of white pine and/or green painted trees (> 4.5" DBH) within a specified area of the sale are damaged, liquidated damages will be assessed for all trees damaged. Rates will be in accordance with General Condition and Requirement 3.4 Damaged Timber.

### 4 - Transportation

## 4.1 - Construction

### 4.1.3 - Slash and earthen piles (8/04)

Piles or windrows of earth along roads and landings that have been widened or constructed shall be leveled. Slash from road maintenance or construction, including stumps, shall be dispersed throughout the sale.

### 4.1.6 - Road construction (4/24)

Construction of new roads or improvements of existing roads shall be done in such a way as to minimize the environmental and visual impacts. Merchantable trees shall be cut and utilized unless otherwise directed. Non-merchantable trees shall be severed and laid flat on the ground. Slash shall be scattered, and not left in windrows and kept a minimum of 10 feet back from the road edge. Stumps shall be set upright, not left on edge, and be moved at least 10 feet away from the road edge. Disturbed soil shall be feathered into the woods and not left in berms or windrows.

### 4.1.7 - Road closure (10/11)

All new roads built into the sale must be blocked to vehicle traffic upon completion of the sale. Overgrown roads that are reopened shall be considered new roads. In general, this will require constructing double earthen berms at strategic locations. Stumps and brush must be placed along the remainder of the trail. These roads must be rendered impassable to cars and trucks. All stumps from road building and landing construction must be reserved to block any newly constructed roads upon completion of the sale. These stumps must be scattered along the road system to prohibit vehicular movement. Contact the Sale Administrator for specific details of design and placement.

## 4.2 - Maintenance

### 4.2.5 - Two wheel drive condition (2/04)

All existing trail roads on and adjacent to the sale area must be passable by two-wheel drive traffic for the duration of the sale.

## 5 - Operations

### 5.1 - Notification

#### 5.1.1 - Pre-sale conference (10/16)

A pre-sale conference on site between the Purchaser and sale administrator is required prior to beginning any operations to determine landing and road locations. The Unit Manager or his/her representative must be contacted at least 10 days in advance to schedule the conference.

#### 5.1.4 - Post-sale conference (10/16)

A post-sale conference on site between the Purchaser and sale administrator is required 5 days prior to the completion of active logging operations to determine clean-up and repair of landings, road edges, and the fulfillment of other contract specifications.

### 5.2 - Conduct of Operations

#### 5.2.1 - Slash

##### 5.2.1.8 - Slash height (12/08)

No slash or tree tops may exceed 24 inches in height.

##### 5.2.1.10 - No slash in openings (5/10)

No brush or logging debris is to be left in the maintained wildlife opening which is indicated by G0 on the Timber Sale Map. Any damage to the opening shall be repaired according to specifications of the Unit Manager or his/her representative.

#### 5.2.2 - Hazard Trees/Snags

##### 5.2.2.1 - Den trees (10/16)

Obvious hollow and/or den trees shall be protected and left standing unless they are a safety hazard.

#### 5.2.3 - Operating Restrictions

##### 5.2.3.5 - Oak wilt restriction (1/18)

Within Payment Unit(s) 1, 2, and 5, unless changed by written agreement, cutting, skidding, hauling within the sale and brushing of access roads to the sale are not permitted during the period of April 15 to July 15. Operations may be allowed if specific steps are taken to prevent damaging uncut oak during the high risk period. Those steps may include completing all road brushing before April 15th and clearing a tree-length buffer along uncut oak cover before April 15th. This is necessary to reduce the spread of oak wilt. For more information, contact the Unit Manager or his/her representative.

#### 5.2.3.11 - Coppice regeneration protection (4/10)

Timber harvesting in any Payment Unit must be completed before significant aspen sprouting occurs in that Payment Unit so as to minimize damage to the new regeneration. Any post harvest operations, such as chipping, must be completed before sprouting of regeneration occurs. If it is anticipated that chipping will be delayed, then tops shall be carried to one central location or left unchipped. The Unit Manager or his/her representative may cease such operations if sprouting occurs before the operation is complete.

#### 5.2.4 - Dead and Down Creation

##### 5.2.4.7 - Dead and down creation: hare, grouse, deer and other species (5/15)

To improve horizontal cover habitat for snowshoe hare, grouse, deer, and other species, the Purchaser is to push over one 12-inch in diameter tree per every 2 acres. These trees should be tipped over with the root ball still attached so the base of the tree is suspended off the ground. The crown of the fallen tree should be at or near ground level after it is pushed over. Good example of these trees are hardwood species that are in poor form, have excessive branching, or do not contain desirable products. Target species for this process are aspen, red maple, and oak. This applies to Payment Unit(s) 3 and 4.

#### 5.2.22 - Operating Caution

##### 5.2.22.1 - Operating caution (6/11)

It is recommended, but not required, that within Payment Unit(s) 3 and 4, cutting, skidding, and hauling occur during dry summer or frozen winter conditions. The reason for the recommendation is because of seasonally wet soils.

#### 5.2.32 - Decking/landing restoration (9/13)

All decking and landing areas must have the surface area restored to a condition equal to or better than before. This is to ensure the proper regeneration of the stand. Wood debris, chips and "cookies" from trimmings must be removed or scattered away from landing and loading areas and may not be windrowed on the edge.

#### 5.2.38 - No decking against live trees (2/04)

Cut products may not be decked against unmarked or designated leave trees.

#### 5.2.41 - Snowmobile trail protection (9/11)

The Snowmobile Trail 990 is a snowmobile trail and is shown on the Timber Sale Map. Do not cut or damage posts with orange trail markers or traffic control signs. If the trail is used, it must be maintained and restored to a condition equal to or better than before the sale. The road maintenance/restoration must be done prior to December 1. If the trail is used for hauling, it must be graded to the satisfaction of the Unit Manager or his/her representative prior to December 1. If the trail road is to be used for hauling during the snowmobile season, then a snow covered base must be left on the trail. Maintain a 20-foot-wide slash, debris, and rut free zone daily using the snowmobile trail as the centerline. No decking of forest products will be permitted along the snowmobile trail. All stumps within 20 feet of the snowmobile trail must be cut at ground level.

#### 5.4 - Soil Protection

##### 5.4.1 - Rutting restriction, general (7/16)

Operations are to cease immediately if equipment and weather conditions result in rutting of roads and/or skid trails which is 12 inches or greater in depth and 50 feet in length. The Unit Manager or his/her representative may restrict hauling and/or skidding if ruts exceed the specified depth. With the Unit Manager or his/her representative's approval, the Purchaser may return to the area when the risk of rutting has decreased.

#### 5.7 - Protection of Historical Sites

##### 5.7.2 - Potential historical site(s) (9/06)

The State Historic Preservation Office has identified the potential for a historic site within the boundary of this timber sale. Note that if the site is discovered during operations, General Condition and Requirement 5.7 - Protection of Historical Sites will apply.



## 5.8 - Protection of Endangered Species

### 5.8.5 - Protection of raptor nests (3/13)

All trees with raptor nests will be protected if found during harvesting operations. Notification will be made to the Unit Manager or his/her representative who will notify the Wildlife Biologist so an on-site evaluation and recommendation can be made, if necessary.

## 6 - Safety and Fire Prevention

### 6.2 - Signing

#### 6.2.1 - Road posting (10/20)

The Purchaser is responsible for posting and maintaining caution signs on Big Cut Highway prior to beginning operations. The road must be posted at appropriate distances from the Sale Area to warn of logging activity and truck traffic. Signs must be removed when harvest operations are suspended or completed. The Purchaser will provide these signs.

#### 6.2.2 - Snowmobile trail posting (10/20)

The Purchaser is responsible for posting and maintaining caution signs on Snowmobile Trail 990 prior to beginning operations during the snowmobile season (approximately December 1 to March 31). The trail must be posted at appropriate distances from the Sale Area to warn of logging activity and truck traffic. Signs must be removed when harvest operations are suspended or completed. The Purchaser will provide these signs.

**TIMBER SALE MAP**

This information provided by authority of Part 525, 1994 PA 451, as amended.

Sale Number  
**54-500-24**

Date  
**07/25/2024**

Forest Management Unit	County	Mapped By: Michaud
Atlanta Mgt Unit	Presque Isle	Cruised By: Michaud

Scale	Page	Of
1:15,840	1	1

Township	Range	Section(s) and Subdivision(s)
34N	03E	Sec. 11 NESE; Sec. 12 SWNW,N1/2SW,SWSW; Sec. 13 N1/2NW,NWNE; Sec. 14 NE;

**Cover Type**

A = Aspen	J = Jack Pine	O = Oak	U = Upland Brush
B = Paper Birch	K = Rock	P = Lowland Poplar	UM = Upland Mix Forest
C = Cedar	L = Lowland Brush	Q = Mixed Swamp Conifer	V = Bog or Marsh
D = Treed Bog	LM = Lowland Mix Forest	R = Red Pine	W = White Pine
E = Swamp Hardwoods	M = Maple, Beech, Birch	S = Black Spruce	X = Non Stocked
F = Spruce/Fir	MC = Mixed Conifer	T = Tamarack	Y = Sand
G = Grass	MD = Mixed Deciduous	Z = Water	
H = Hemlock	N = Marsh		

**Density**

0 = Non Stocked	5 = Pole Timber Medium
1 = Seedling Sapling Poor	6 = Pole Timber Well
2 = Seedling Sapling Medium	7 = Saw Timber Poor
3 = Seedling Sapling Well	8 = Saw Timber Medium
4 = Pole Timber Poor	9 = Saw Timber Well

**Locator Map (1:200,000)**

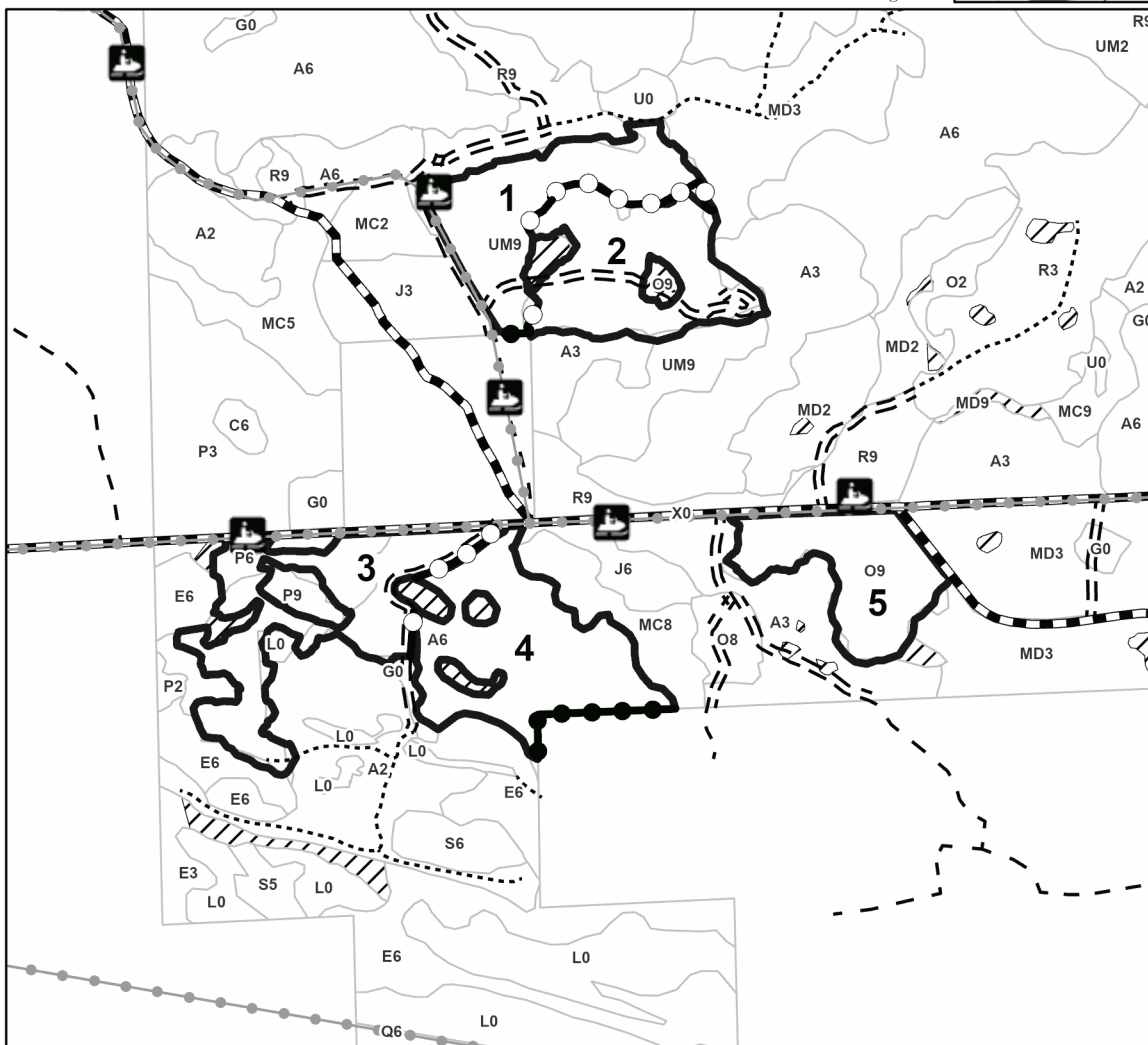
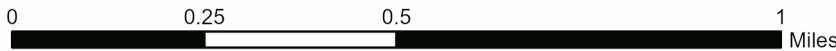


**PU # Acres**

1	23.6
2	26
3	28.9
4	30.7
5	19.7

**Big Cut Mix1**

**128.9 Acres**



**Legend**

- Sale Boundary (Red)
- Payment Unit (Yellow)
- Private Line (Blue)
- Retention Areas
- Stand
- Recreational Trail
- Primary Forest Road
- Forest Access Route
- Administrative Access Only
- Paved Road
- Government Gravel/Dirt
- Private Gravel/Dirt

Use QR Code to open Map in App

