



**DEPARTMENT OF NATURAL RESOURCES
STATE OF MICHIGAN
TIMBER SALE PROSPECTUS #7615**

SCHEDULED SALE DATE AND TIME: 3:00 p.m. (local time) on June 12, 2025.

LOCATION: NEWBERRY MGMT UNIT, 5666 S STATE HWY M 123, NEWBERRY, MI 49868.

CONTACT NAME: Keith Magnusson

PHONE NUMBER: (906) 291-0120

PROSPECTUS NOTE: The bidder is advised to inspect the sale area and review the location, estimated volumes, operating costs and contract terms of proposed sales. Please be aware that some landowners may request 60 days or more notice for access across their land.

Notice is hereby given that bids will be received by the Unit Manager, NEWBERRY MANAGEMENT UNIT, for certain timber on the following described lands:

Blue Line Bonanza (42-016-24) / T48N, R06W, SEC. 6 , N1/2NW,SWNW,SW,NWSE.
T48N, R07W, SEC. 1 , E1/2NE.

Chippewa County, Advertised Price \$40,398.85, 247.5 Acres, Hardwood, Spruce/Fir/Tamarack.

SALE NOTE: Roads may require the installation of culverts for cross drainage or at natural drainage-ways. See Sale Spec 4.1.5 for additional information.

Permission for access across private land is the responsibility of the Purchaser. A copy of the written permission from the private landowner must be given to the Unit Manager PRIOR to bid opening, or the bid will not be accepted.

It is recommended that within Payment Units 3 and 5-17, harvesting occur during dry summer or frozen winter conditions because of low, wet ground.

Some roads or skid trails require extra protection such as that afforded by interlocking composite mats or another approved system. If available, mats may be borrowed from the DNR. See Sale Spec 5.2.17 for additional information.

Access may be through private land.

TIMBER SALE INFORMATION

Blue Line Bonanza (42-016-24)

T48N, R06W, SEC. 6; T48N, R07W, SEC. 1.
Chippewa County (Advertised Price \$40,398.85)

SALE NOTE: Roads may require the installation of culverts for cross drainage or at natural drainage-ways. See Sale Spec 4.1.5 for additional information.

Permission for access across private land is the responsibility of the Purchaser. A copy of the written permission from the private landowner must be given to the Unit Manager PRIOR to bid opening, or the bid will not be accepted.

It is recommended that within Payment Units 3 and 5-17, harvesting occur during dry summer or frozen winter conditions because of low, wet ground.

Some roads or skid trails require extra protection such as that afforded by interlocking composite mats or another approved system. If available, mats may be borrowed from the DNR. See Sale Spec 5.2.17 for additional information.

Access may be through private land.

A timber sale contract for this lump sum, sealed bid timber sale will be awarded to the responsible bidder offering the highest sealed bid price. All units of volume listed below were estimated using the Inventory Manager computer program and the new Michigan taper model. Bids must be at or above the following advertised price for each product and species:

<u>PRODUCTS & SPECIES</u>	<u>ESTIMATED UNITS*</u>	<u>ADVERTISED PRICE</u>
Sawtimber		
Paper Birch	18.0 MBF	\$ 28.00 / MBF
Red Maple	30.2 MBF	\$ 21.00 / MBF
Pulpwood		
Balsam Fir	418 Cords	\$ 5.75 / Cord
Black Spruce	1,266 Cords	\$ 3.70 / Cord
Jack Pine	88 Cords	\$ 14.25 / Cord
Mixed Aspen	1,001 Cords	\$ 13.40 / Cord
Mixed Hardwood	2,061 Cords	\$ 6.35 / Cord
Red Pine	81 Cords	\$ 40.00 / Cord
Tamarack	6 Cords	\$ 3.65 / Cord
White Pine	6 Cords	\$ 10.80 / Cord
White Spruce	295 Cords	\$ 3.70 / Cord

* The total volume is statistically estimated within plus (+) or minus (-) 11.33 percent. There are an estimated 5,331 cords on this timber sale, plus or minus 604 cords at the 95% confidence level. The estimated units are final and not subject to adjustment. Prospective bidders are urged to examine this timber and to make their own estimates of quantity and quality.

BOND AND PAYMENT SCHEDULE:

1. A bond in the amount of \$2,019.94 to insure faithful performance of the conditions of the contract will be deposited by the successful bidder within 21 days of the sale award.
2. Cutting in any sale or unit without the required advance payment would be considered a trespass.
3. Total payment must be paid in advance or according to the following schedule :
 - (a) Ten percent (10%) of the sale value must be paid within 21 days of the sale award.
 - (b) The 10% down payment will be credited towards the first unit cut.

(c) Payment for each of the following units must be made before cutting begins in that unit:

PAYMENT UNIT NUMBER	PERCENT OF TOTAL SALE VALUE
01	5.1%
02	11.9%
03	1.2%
04	3.8%
05	3.3%
06	6.3%
07	4.1%
08	4.5%
09	8.3%
10	5.5%
11	2.3%
12	11.0%
13	11.8%
14	6.6%
15	2.4%
16	5.9%
17	6.0%

4. If no cutting takes place, the 10% down payment will not be refunded.

5. Operations on the contract issued will terminate on 06/30/2029.

SALE STATISTICS

Volumes were calculated in cubic feet using the Michigan taper model. Cubic foot volume includes all wood inside bark for the product indicated. For display purposes, cubic feet were converted to cords and MBF using a simple conversion factor, e.g. 79 cubic feet per cord and 185 cubic feet per MBF. The cubic foot volumes are precise; the cords and MBF volumes are not. Cubic foot volume cannot be directly converted to cords or boards with precision.

SALE VOLUMES

The total estimated sale volume may not equal the sum of the species/products due to the nature of statistical calculations associated with double sampling methodology.

VOLUME			STATISTICAL RANGE IN CORDS	
TOTAL CUBIC FEET	TOTAL CORDS	PERCENT ERROR	MINIMUM	MAXIMUM
421,152	5,331	11.33%	4,727	5,935

VDU VOLUMES

A VDU is a Volume Determination Unit. Volumes and their associated statistics are calculated at the VDU level and summarized to the sale level. There is often a one to one relationship between a VDU and a Payment Unit, but not always, depending on the cruise design. Refer to the VDU TO PAYMENT UNIT table.

	VOLUME			RANGE IN CORDS	
VDU	TOTAL CUBIC FEET	TOTAL CORDS	PERCENT ERROR	MINIMUM	MAXIMUM
65	16,690	211	60.77%	83	340
69	20,485	259	49.05%	132	386
70	4,761	60	60.60%	24	97
72	29,244	370	37.02%	233	507
75	9,862	125	133.24%	0	291
78	107,388	1,359	25.28%	1,016	1,703
79	10,094	128	54.06%	59	197
80	21,259	269	31.24%	185	353
81	31,037	393	35.73%	253	533
82	124,645	1,578	23.43%	1,208	1,947
84	45,688	578	29.19%	410	747
TOTAL:	421,152	5,331		3,601	7,102

VDU TO PAYMENT UNIT

When a VDU is associated with more than one Payment Unit (PU), the VDU volumes are assigned to the PU based on acres of the VDU within the PU.

VDU	VDU ACRES	PU	PU ACRES
65	9.6	1	5.0
65	9.6	2	4.6
69	13.8	5	13.8
70	7.3	4	7.3
72	20.2	2	20.2
75	4.3	7	4.3
78	65.9	6	20.7
78	65.9	9	27.2
78	65.9	10	18.0
79	9.3	3	9.3
80	10.3	8	10.3
81	25.9	11	12.5
81	25.9	15	13.4
82	54.0	12	20.1
82	54.0	13	21.8
82	54.0	14	12.1
84	26.9	16	13.4
84	26.9	17	13.5
TOTAL:	549.7		247.5

DESCRIPTION OF TIMBER BY PU (PU)

PU	MARKET GROUP	PRODUCT	QUANTITY	UNIT	ACRES	ADVERTISE PRICE
1	Paper Birch	Sawtimber	0.8	MBF	5.0	\$2,042.40
	Balsam Fir	Pulpwood	2	Cords		
	Mixed Aspen		56	Cords		
	<i>B. T. Aspen</i>		56	Cords		
	Mixed Hardwood		20	Cords		
	<i>Paper Birch</i>		7	Cords		
	<i>Red Maple</i>		13	Cords		
	Red Pine		28	Cords		
	White Spruce		3	Cords		
2	Paper Birch	Sawtimber	3.3	MBF	24.8	\$4,798.70
	Balsam Fir	Pulpwood	29	Cords		
	Black Spruce		106	Cords		
	Jack Pine		81	Cords		
	Mixed Aspen		92	Cords		
	<i>B. T. Aspen</i>		85	Cords		
	<i>Quaking Aspen</i>		7	Cords		
	Mixed Hardwood		104	Cords		
	<i>Paper Birch</i>		39	Cords		
	<i>Red Maple</i>		65	Cords		
	Red Pine		25	Cords		
	White Spruce		27	Cords		
3	Black Spruce	Pulpwood	123	Cords	9.3	\$486.85
	Mixed Hardwood		5	Cords		
	<i>Paper Birch</i>		5	Cords		
4	Black Spruce	Pulpwood	3	Cords	7.3	\$1,515.70
	Jack Pine		7	Cords		
	Mixed Aspen		15	Cords		
	<i>B. T. Aspen</i>		15	Cords		
	Mixed Hardwood		3	Cords		
	<i>Paper Birch</i>		3	Cords		
	Red Pine		28	Cords		
	White Pine		6	Cords		
5	Red Maple	Sawtimber	2.2	MBF	13.8	\$1,340.70
	Balsam Fir	Pulpwood	14	Cords		
	Black Spruce		116	Cords		
	Mixed Aspen		7	Cords		
	<i>B. T. Aspen</i>		7	Cords		
	Mixed Hardwood		96	Cords		
	<i>Paper Birch</i>		33	Cords		
	<i>Red Maple</i>		63	Cords		
	White Spruce		22	Cords		
6	Paper Birch	Sawtimber	2.1	MBF	20.7	\$2,546.85
	Red Maple		2.0	MBF		
	Balsam Fir	Pulpwood	47	Cords		
	Black Spruce		118	Cords		
	Mixed Aspen		34	Cords		
	<i>B. T. Aspen</i>		24	Cords		
	<i>Quaking Aspen</i>		10	Cords		
	Mixed Hardwood		180	Cords		
	<i>Paper Birch</i>		42	Cords		
	<i>Red Maple</i>		138	Cords		
	White Spruce		38	Cords		
7	Mixed Aspen	Pulpwood	125	Cords	4.3	\$1,675.00
	<i>B. T. Aspen</i>		125	Cords		
8	Paper Birch	Sawtimber	1.2	MBF	10.3	\$1,800.95

DESCRIPTION OF TIMBER BY PU (PU), CON'T

PU	MARKET GROUP	PRODUCT	QUANTITY	UNIT	ACRES	ADVERTISE PRICE
8 con't	Red Maple	Sawtimber	5.4	MBF		
	Balsam Fir	Pulpwood	25	Cords		
	Black Spruce		9	Cords		
	Mixed Aspen		29	Cords		
	<i>Quaking Aspen</i>		29	<i>Cords</i>		
	Mixed Hardwood		144	Cords		
	<i>Black Ash</i>		8	<i>Cords</i>		
	<i>Paper Birch</i>		35	<i>Cords</i>		
	<i>Red Maple</i>		101	<i>Cords</i>		
	White Spruce		47	Cords		
9	Paper Birch	Sawtimber	2.8	MBF	27.2	\$3,347.70
	Red Maple		2.6	MBF		
	Balsam Fir	Pulpwood	64	Cords		
	Black Spruce		154	Cords		
	Mixed Aspen		44	Cords		
	<i>B. T. Aspen</i>		31	<i>Cords</i>		
	<i>Quaking Aspen</i>		13	<i>Cords</i>		
	Mixed Hardwood		236	Cords		
	<i>Paper Birch</i>		55	<i>Cords</i>		
	<i>Red Maple</i>		181	<i>Cords</i>		
	White Spruce		51	Cords		
10	Paper Birch	Sawtimber	1.9	MBF	18.0	\$2,209.70
	Red Maple		1.7	MBF		
	Balsam Fir	Pulpwood	41	Cords		
	Black Spruce		102	Cords		
	Mixed Aspen		29	Cords		
	<i>B. T. Aspen</i>		21	<i>Cords</i>		
	<i>Quaking Aspen</i>		8	<i>Cords</i>		
	Mixed Hardwood		157	Cords		
	<i>Paper Birch</i>		37	<i>Cords</i>		
	<i>Red Maple</i>		120	<i>Cords</i>		
	White Spruce		33	Cords		
11	Balsam Fir	Pulpwood	12	Cords	12.5	\$911.15
	Black Spruce		137	Cords		
	Mixed Aspen		12	Cords		
	<i>B. T. Aspen</i>		12	<i>Cords</i>		
	Mixed Hardwood		24	Cords		
	<i>Black Ash</i>		1	<i>Cords</i>		
	<i>Paper Birch</i>		10	<i>Cords</i>		
	<i>Red Maple</i>		13	<i>Cords</i>		
	Tamarack		3	Cords		
	White Spruce		3	Cords		
12	Paper Birch	Sawtimber	2.2	MBF	20.1	\$4,448.50
	Red Maple		3.8	MBF		
	Balsam Fir	Pulpwood	45	Cords		
	Black Spruce		86	Cords		
	Mixed Aspen		137	Cords		
	<i>Quaking Aspen</i>		137	<i>Cords</i>		
	Mixed Hardwood		289	Cords		
	<i>Paper Birch</i>		83	<i>Cords</i>		
	<i>Red Maple</i>		206	<i>Cords</i>		
	White Spruce		16	Cords		
13	Paper Birch	Sawtimber	2.4	MBF	21.8	\$4,818.60
	Red Maple		4.2	MBF		
	Balsam Fir	Pulpwood	49	Cords		

DESCRIPTION OF TIMBER BY PU (PU), CON'T

PU	MARKET GROUP	PRODUCT	QUANTITY	UNIT	ACRES	ADVERTISE PRICE
13 con't	Black Spruce	Pulpwood	93	Cords		
	Mixed Aspen		148	Cords		
	<i>Quaking Aspen</i>		148	<i>Cords</i>		
	Mixed Hardwood		313	Cords		
	<i>Paper Birch</i>		90	<i>Cords</i>		
	<i>Red Maple</i>		223	<i>Cords</i>		
	White Spruce		18	Cords		
14	Paper Birch	Sawtimber	1.3	MBF	12.1	\$2,673.05
	Red Maple	Pulpwood	2.3	MBF		
	Balsam Fir		27	Cords		
	Black Spruce		52	Cords		
	Mixed Aspen		82	Cords		
	<i>Quaking Aspen</i>		82	<i>Cords</i>		
	Mixed Hardwood		174	Cords		
	<i>Paper Birch</i>		50	<i>Cords</i>		
	<i>Red Maple</i>		124	<i>Cords</i>		
	White Spruce		10	Cords		
15	Balsam Fir	Pulpwood	12	Cords	13.4	\$964.20
	Black Spruce		146	Cords		
	Mixed Aspen		13	Cords		
	<i>B. T. Aspen</i>		13	<i>Cords</i>		
	Mixed Hardwood		25	Cords		
	<i>Black Ash</i>		1	<i>Cords</i>		
	<i>Paper Birch</i>		10	<i>Cords</i>		
	<i>Red Maple</i>		14	<i>Cords</i>		
	Tamarack		3	Cords		
	White Spruce		3	Cords		
16	Red Maple	Sawtimber	3.0	MBF	13.4	\$2,388.10
	Balsam Fir	Pulpwood	25	Cords		
	Black Spruce		10	Cords		
	Mixed Aspen		88	Cords		
	<i>B. T. Aspen</i>		77	<i>Cords</i>		
	<i>Quaking Aspen</i>		11	<i>Cords</i>		
	Mixed Hardwood		145	Cords		
	<i>Paper Birch</i>		51	<i>Cords</i>		
	<i>Red Maple</i>		94	<i>Cords</i>		
	White Spruce		12	Cords		
17	Red Maple	Sawtimber	3.0	MBF	13.5	\$2,430.70
	Balsam Fir	Pulpwood	26	Cords		
	Black Spruce		11	Cords		
	Mixed Aspen		90	Cords		
	<i>B. T. Aspen</i>		78	<i>Cords</i>		
	<i>Quaking Aspen</i>		12	<i>Cords</i>		
	Mixed Hardwood		146	Cords		
	<i>Paper Birch</i>		51	<i>Cords</i>		
	<i>Red Maple</i>		95	<i>Cords</i>		
	White Spruce		12	Cords		
TOTAL:			48.2	MBF		
TOTAL:			5,222	Cords		

Sale Specific Conditions & Requirements

Sale Name: Blue Line Bonanza

Sale Number: 42-016-24 Seq#: 1

1 - Sale Area

1.2 - Boundaries

1.2.1 - Painted Boundaries (9/19)

The sale boundary and Payment Unit boundaries are marked and identified by blue, red and yellow paint. Exterior sale boundary lines against private property are marked with blue paint. Exterior sale boundary lines against state are marked with red paint. Interior Payment Unit boundaries are marked with yellow paint. Retention patches are marked with red paint; no harvesting activities may occur within these areas. The painted boundary line trees are not Included Timber and are to be protected unless marked with orange paint. Yellow painted trees designating an interior Payment Unit boundary are NOT to be cut.

2 - Timber Specifications

2.1 - Included Timber

2.1.2 - Clearcut Unit(s) w/o Unmerchantable Trees (8/11)

Within Payment Unit(s) 3, and 5-17, cut all trees which meet minimum piece specifications in 2.2 Utilization, except do not cut any hemlock, cedar, oak, or yellow birch. In addition, do not cut any trees marked in blue, red, green, or yellow paint. Furthermore, red and white pine that are marked with orange paint are designated for cutting.

2.1.3 - Cut Tree Marked Unit(s) (12/08)

Within Payment Unit(s) 1 and 4, all trees are designated for cutting when marked with orange paint above and below stump height, regardless of merchantability. In addition, do not cut any hemlock, cedar, oak, or yellow birch. Furthermore, do not cut any trees marked with blue, red, green, or yellow paint. If Payment Units 1 and 4 cannot be harvested due to difficult access, the Purchaser can opt to drop the Payment Unit from the sale via a Timber Sale Contract Amendment.

2.1.7 - Leave Tree Marked Unit(s) (6/14)

Within Payment Unit(s) 2, all trees, which meet minimum piece specifications in 2.2 Utilization, are designated for cutting, except do not cut any hemlock, cedar, oak, or yellow birch. In addition, do not cut any trees marked with blue, red, green, or yellow paint. Furthermore, red and white pine that are marked with orange paint are designated for cutting.

4 - Transportation

4.1 - Construction

4.1.4 - Timber Removed for Construction (3/23)

Trees cut or damaged in the process of pre-approved road, landing, or skid trail construction will be decked in an area separate from other Designated Timber and not removed until measured by the Sale Administrator. Payment will be made at contract prices or average prices, if not on the contract.

4.1.5 - Culverts (5/14)

Roads may require the installation of culverts for cross drainage or at natural drainage-ways. If culverts are needed in these locations, their placement will be specified by the Sale Administrator, and they shall be installed prior to hauling. The culverts shall be new, corrugated metal or plastic gauge. Culverts will be a minimum of 12 inches in diameter and 24 feet in length. If culverts are removed, fill shall be removed from wetland soils as specified. Soils shall be maintained and left in a non-erodible condition, with water bars, seed, fertilizer, mulch, and slash installed as directed by the Sale Administrator and as specified in the BMP manual. Stream crossing permits, if needed, will be obtained by the DNR.

4.1.6 - Road Construction (4/24)

Construction of new roads or improvements of existing roads shall be done in such a way as to minimize the environmental and visual impacts. Merchantable trees shall be cut and utilized unless otherwise directed. Non-merchantable trees shall be severed and laid flat on the ground. Slash shall be scattered, and not left in windrows and kept a minimum of 10 feet back from the road edge. Stumps shall be set upright, not left on edge, and be moved at least 10 feet away from the road edge.

Disturbed soil shall be feathered into the woods and not left in berms or windrows.

4.1.7 - Road Closure (10/11)

All new roads built into the sale must be blocked to vehicle traffic upon completion of the sale. Overgrown roads that are reopened shall be considered new roads. In general, this will require constructing a four (4') foot high berm of stumps and logs covered with earth. Stumps and brush must be placed along the remainder of the trail. All stumps from road building and landing construction must be reserved to block any newly constructed roads upon completion of the sale. These stumps must be scattered along the road system to prohibit vehicular movement.

4.2 - Maintenance

4.2.1 - Hauling Restriction (12/08)

Hauling may be restricted on forest roads by the Unit Manager or his/her representative. The restriction may occur during spring breakup or occur during wet weather conditions.

4.2.2 - Fill Material (4/07)

To maintain roads, fill material may be needed in areas where "holes" exist or may be expected to develop. This fill material should be placed before trucking begins. Contact the Sale Administrator regarding the availability of onsite sand or gravel from adjacent State-owned lands.

4.2.3 - Road maintenance (8/13)

The following road maintenance may be needed on State of Michigan roads: cleaning of drainages, grading, crowning and filling with gravel where necessary. Damages will be assessed if grading/repair of state managed roads does not occur.

4.2.4 - Grading (10/16)

For completion of the sale, state forest roads must be graded. In general, this will require a road grader or bulldozer to shape up the roads after forest products have been hauled off site. This includes cleaning of drainage areas, grading, crowning and filling with gravel, if necessary. The grading equipment to be used must be approved by the Unit Manager or his/her representative.

4.4 - Access

4.4.1 - Private property access (3/11)

Permission for access across private land is the responsibility of the Purchaser. A copy of the written permission from the private landowner must be given to the Unit Manager prior to bid opening or the bid will not be accepted.

Access will be through Hiawatha Hunt Club to the south of the sale. Contact Sale Administrator for contact information.

4.4.3 - Access gate (12/08)

The access gate must be locked at the completion of each day unless otherwise approved by the Unit Manager or his/her representative.

5 - Operations

5.1 - Notification

5.1.1 - Pre-sale Conference (10/16)

A pre-sale conference between the Purchaser and Sale Administrator is required prior to beginning any operations to determine landing and road locations. The Unit Manager or his/her representative must be contacted at least 10 days in advance to schedule the conference.

5.1.4 - Post-Sale Conference (10/16)

A post-sale conference on site between the Purchaser and sale administrator is required 5 days prior to the completion of active logging operations to determine clean-up and repair of landings, road edges, and the fulfillment of other contract specifications.

5.2 - Conduct of Operations

5.2.2 - Hazard Trees/Snags

5.2.2.1 - Den Trees (10/16)

Obvious hollow and/or den trees shall be protected and left standing unless they are a safety hazard.

5.2.3 - Operating Restrictions

5.2.3.6 - Bark Beetle Restriction (12/08)

In the event drought creates a high risk of pine bark beetle infestation, pine is not to be cut during the period March 1 through July 1, unless all portions of trees greater than two inches in diameter are removed from the sale area, reduced to chips, or treated to the satisfaction of the Unit Manager or his/her representative, within fifteen days of being severed from the stump. Pine log decks, pulpwood piles and treetops that are piled for chipping in the fall or winter within a 1/4 mile of susceptible sites must be removed before March 15. Residual slash must not be placed in piles or rows and must be spread over the site for quick drying. The Department of Natural Resources will exercise this specification if the risk of damage warrants.

5.2.4 - Dead and Down Creation

5.2.4.4 - Dead and Down Creation, Grouse (6/18)

To encourage grouse and other wildlife, in Payment Unit(s) 12-14 and 16-17 leave a 15-inch diameter or larger grouse drumming log (8-10 foot or greater in length) flat on the ground next to a tall stump at least 3 feet high. A total of 6 drumming logs should be placed; 3 near the adjacent lowlands to the south for Payment Units 12-14 and 3 along the North & East in Payment Units 16-17. The logs will be evenly scattered along the edges of these units. Logs can be an unmerchantable piece or a full tree. Each drumming log must be clearly identifiable by Sale Administrators. Please contact the Sale Administrator for more information.

5.2.17 - Timber Mats and Interlocking Composite Mats (5/23)

Some roads or skid trails require extra protection such as that afforded by interlocking composite mats or another approved system. If available, mats may be borrowed from the DNR. A Timber Sale Contract Amendment will be used to document the Purchaser's use of the DNR's mats. Contact the Sale Administrator regarding availability and pick-up. Composite mats are only available from the Grayling field office and the Marquette ICC. The Purchaser is responsible for picking up and hauling the mats to and from the site. The composite mats will require DNR staff onsite for installation and removal. Contact the Sale Administrator to schedule at least 30 days before desired install/removal date. All mats must be cleaned prior to drop off. This may include, but is not limited to, power washing and brushing to remove mud and debris. A charge of \$2,000.00 per composite mat will be assessed for all damaged or non-returned mats. Damage for the composite mats is defined as cracked or broken mats.

5.2.22 - Operating Caution

5.2.22.1 - Operating Caution (6/11)

It is recommended, but not required, that within Payment Unit(s) 3 and 5- 17, cutting, skidding, and hauling occur during dry summer or frozen winter conditions. The reason for the recommendation is because low wet ground.

5.2.32 - Decking/Landing Restoration (9/13)

All decking and landing areas must have the surface area restored to a condition equal to or better than before. This is to ensure the proper regeneration of the stand. Wood debris, chips and "cookies" from trimmings must be removed or scattered away from landing and loading areas and may not be windrowed on the edge.

5.2.38 - No Decking Against Live Trees (2/04)

Cut products may not be decked against unmarked or designated leave trees.

5.4 - Soil Protection

5.4.1 - Rutting Restriction, General (7/16)

Operations are to cease immediately if equipment and weather conditions result in rutting of roads and/or skid trails which is 12 inches or greater in depth and 50 feet in length. The Unit Manager or his/her representative may restrict hauling and/or skidding if ruts exceed the specified depth. With the Unit Manager or his/her representative's approval, the Purchaser may return to the area when the risk of rutting has decreased.

5.4.2 - Skid Trails (2/04)

Skid trails up and down slopes should be avoided. If, however, this is unavoidable, these trails will be left in a non-erodible condition using water bars, logs, and slash. Placing of slash on these skid trails while logging is ongoing may alleviate need for

any further action. At the direction of the Sale Administrator, seed, fertilizer, and mulch may also be required.

5.4.4 - Slope Protection (9/19)

Skid trails and roads on slopes shall be water barred with slash, stumps, and/or clean straw bales native to the area as soon as use is complete to prevent erosion.

5.8 - Protection of Endangered Species

5.8.5 - Protection of Raptor Nests (3/13)

All trees with raptor nests will be protected if found during harvesting operations. Notification will be made to the Unit Manager or his/her representative who will notify the Wildlife Biologist so an onsite evaluation and recommendation can be made, if necessary.

6 - Safety and Fire Prevention

6.2 - Signing

6.2.1 - Road Posting (10/20)

The Purchaser is responsible for posting and maintaining caution signs on Tahqua Trail prior to beginning operations. The road must be posted at appropriate distances from the Sale Area to warn of logging activity and truck traffic. Signs must be removed when harvest operations are suspended or completed. The Purchaser will provide these signs.

**TIMBER SALE MAP**

This information provided by authority of Part 525, 1994 PA 451, as amended.

Sale Number
42-016-24Date
08/30/2024

Forest Management Unit

County

Mapped By: Payment

Scale

Page

Of

Newberry Mgt Unit

Chippewa

Cruised By: Grossman Forestry

1:15,840

1

1

Township

Range

Section(s) and

48N

06W /

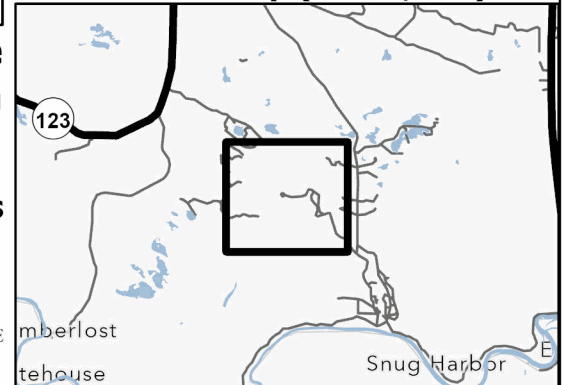
Subdivision(s) Sec. 1 E1/2NE; Sec. 6 N1/2NW,SWNW,SW,NWSE;

Cover Type

A = Aspen	J = Jack Pine	O = Oak	U = Upland Brush
B = Paper Birch	K = Rock	P = Lowland Poplar	UM = Upland Mix Forest
C = Cedar	L = Lowland Brush	Q = Mixed Swamp Conifer	V = Bog or Marsh
D = Treed Bog	LM = Lowland Mix Forest	R = Red Pine	W = White Pine
E = Swamp Hardwoods	M = Maple, Beech, Birch	S = Black Spruce	X = Non Stocked
F = Spruce/Fir	MC = Mixed Conifer	T = Tamarack	Y = Sand
G = Grass	MD = Mixed Deciduous		Z = Water
H = Hemlock	N = Marsh		

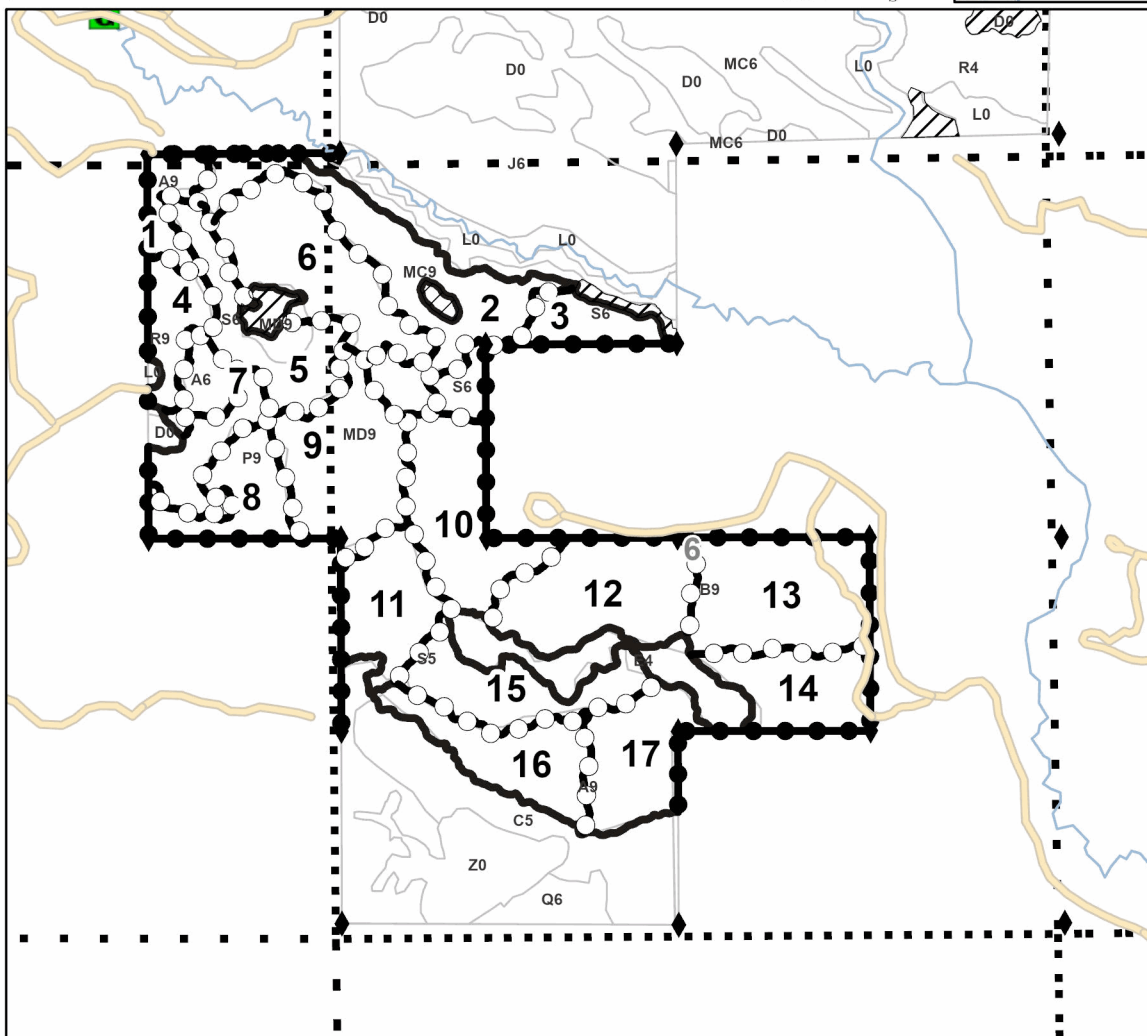
Density

0 = Non Stocked	5 = Pole Timber Medium
1 = Seedling Sapling Poor	6 = Pole Timber Well
2 = Seedling Sapling Medium	7 = Saw Timber Poor
3 = Seedling Sapling Well	8 = Saw Timber Medium
4 = Pole Timber Poor	9 = Saw Timber Well

Locator Map (1:200,000)**Blue Line Bonanza****247.5 Acres**

PU #	Acres	PU #	Acres	PU #	Acres	PU #	Acres
1	5	6	20.7	11	12.5	16	13.4
2	24.8	7	4.3	12	20.1	17	13.4
3	9.3	8	10.3	13	21.8		
4	7.3	9	27.1	14	12.1		
5	13.8	10	18	15	13.4		

0 0.25 0.5 1 Miles

**Legend**

- Payment Unit
- Stand
- Retention Areas
- Sections
- Against State (Red)
- Payment Unit (Yellow)
- Private Line (Blue)
- Non-DNR Road
- Perennial River
- Survey Grade Corner
- Gate

Use QR Code to open Map in App

