



**DEPARTMENT OF NATURAL RESOURCES  
STATE OF MICHIGAN  
TIMBER SALE PROSPECTUS #7498**

SCHEDULED SALE DATE AND TIME: **9:00 a.m. (local time) on October 24, 2024.**

LOCATION: **PIGEON RIVER COUNTRY MGMT UNIT, PO BOX 456, 9966 TWIN LAKES ROAD, VANDERBILT, MI**

CONTACT NAME: Mark Monroe

PHONE NUMBER: (989) 983-4101

PROSPECTUS NOTE: The bidder is advised to inspect the sale area and review the location, estimated volumes, operating costs and contract terms of proposed sales. Please be aware that some landowners may request 60 days or more notice for access across their land.

Notice is hereby given that bids will be received by the Unit Manager, PIGEON RIVER COUNTRY MANAGEMENT UNIT, for certain timber on the following described lands:

Pipeline Red Pine 2 (53-026-24) / T33N, R01E, SEC. 25, SW.  
T33N, R01E, SEC. 26, E1/2SE.

Cheboygan County, Advertised Price \$25,511.30, 29.0 Acres, Jack Pine, Red Pine.

SALE NOTE: A recreation site such as a trail, pathway, or campground is within the sale area or the vicinity. Certain restrictions/specifications may be applicable including time restrictions.

# TIMBER SALE INFORMATION

Pipeline Red Pine 2 (53-026-24)  
 T33N, R01E, SEC. 25; T33N, R01E, SEC. 26.  
 Cheboygan County (Advertised Price \$25,511.30)

SALE NOTE: A recreation site such as a trail, pathway, or campground is within the sale area or the vicinity. Certain restrictions/specifications may be applicable including time restrictions.

A timber sale contract for this lump sum, sealed bid timber sale will be awarded to the responsible bidder offering the highest sealed bid price. All units of volume listed below were estimated using the Inventory Manager computer program and the new Michigan taper model. Bids must be at or above the following advertised price for each product and species:

<u>PRODUCTS &amp; SPECIES</u>	<u>ESTIMATED UNITS*</u>	<u>ADVERTISED PRICE</u>
Pulpwood		
Jack Pine	16 Cords	\$ 12.15 / Cord
Mixed Aspen	7 Cords	\$ 18.70 / Cord
Red Pine	490 Cords	\$ 51.40 / Cord

\* The total volume is statistically estimated within plus (+) or minus (-) 23.42 percent. There are an estimated 1,557 cords on this timber sale, plus or minus 365 cords at the 95% confidence level. The estimated units are final and not subject to adjustment. Prospective bidders are urged to examine this timber and to make their own estimates of quantity and quality.

### **BOND AND PAYMENT SCHEDULE:**

1. A bond in the amount of \$2,551.13 to insure faithful performance of the conditions of the contract will be deposited by the successful bidder within 21 days of the sale award.
2. Cutting in any sale or unit without the required advance payment would be considered a trespass.
3. Total payment must be paid in advance or according to the following schedule :
  - (a) Ten percent (10%) of the sale value must be paid within 21 days of the sale award.
  - (b) The 10% down payment will be credited towards the first unit cut.
  - (c) Payment for each of the following units must be made before cutting begins in that unit:
 

PAYMENT UNIT NUMBER	PERCENT OF TOTAL SALE VALUE
01	58.5%
02	41.5%
4. If no cutting takes place, the 10% down payment will not be refunded.
5. Operations on the contract issued will terminate on 06/30/2027.

### **SALE STATISTICS**

Volumes were calculated in cubic feet using the Michigan taper model. Cubic foot volume includes all wood inside bark for the product indicated. For display purposes, cubic feet were converted to cords and MBF using a simple conversion factor, e.g. 79 cubic feet per cord and 185 cubic feet per MBF. The cubic foot volumes are precise; the cords and MBF volumes are not. Cubic foot volume cannot be directly converted to cords or boards with precision.

### **SALE VOLUMES**

The total estimated sale volume may not equal the sum of the species/products due to the nature of statistical calculations associated with double sampling methodology.

VOLUME			STATISTICAL RANGE IN CORDS	
TOTAL CUBIC FEET	TOTAL CORDS	PERCENT ERROR	MINIMUM	MAXIMUM
122,975	1,557	23.42%	1,192	1,921

**VDU VOLUMES**

A VDU is a Volume Determination Unit. Volumes and their associated statistics are calculated at the VDU level and summarized to the sale level. There is often a one to one relationship between a VDU and a Payment Unit, but not always, depending on the cruise design. Refer to the VDU TO PAYMENT UNIT table.

VDU	VOLUME		PERCENT ERROR	RANGE IN CORDS	
	TOTAL CUBIC FEET	TOTAL CORDS		MINIMUM	MAXIMUM
40	122,975	1,557	23.42%	1,192	1,921
<b>TOTAL:</b>	<b>122,975</b>	<b>1,557</b>		<b>1,192</b>	<b>1,921</b>

**VDU TO PAYMENT UNIT**

When a VDU is associated with more than one Payment Unit (PU), the VDU volumes are assigned to the PU based on acres of the VDU within the PU.

VDU	VDU ACRES	PU	PU ACRES
40	29.0	1	17.0
		2	12.0
<b>TOTAL:</b>	<b>29.0</b>		<b>29.0</b>

**DESCRIPTION OF TIMBER BY PU (PU)**

PU	MARKET GROUP	PRODUCT	QUANTITY	UNIT	ACRES	ADVERTISE PRICE
1	Jack Pine	Pulpwood	9	Cords	17.0	\$14,935.95
	Mixed Aspen		4	Cords		
	<i>B. T. Aspen</i>	<i>Sawtimber</i>	0.6	<i>MBF</i>		
	<i>B. T. Aspen</i>	<i>Pulpwood</i>	3	<i>Cords</i>		
	Red Pine		287	Cords		
2	Jack Pine	Pulpwood	7	Cords	12.0	\$10,575.35
	Mixed Aspen		3	Cords		
	<i>B. T. Aspen</i>	<i>Sawtimber</i>	0.5	<i>MBF</i>		
	<i>B. T. Aspen</i>	<i>Pulpwood</i>	2	<i>Cords</i>		
	Red Pine		203	Cords		
<b>TOTAL:</b>			513	Cords		

## Sale Specific Conditions & Requirements

Sale Name: Pipeline Red Pine 2

Sale Number: 53-026-24 Seq#: 1

### 1 - Sale Area

#### 1.2 - Boundaries

##### 1.2.1 - Painted boundaries (9/19)

The sale boundary and Payment Unit boundaries are marked and identified by red paint and the oil/gas pipeline. Exterior sale boundary lines against state are marked with red paint. Interior Payment Unit boundaries are unpainted and identified by the oil/gas pipeline.

### 2 - Timber Specifications

#### 2.1 - Included Timber

##### 2.1.8 - Designated plantation row unit(s) (12/08)

Within Payment Unit(s) 1 and 2, all red pine trees which meet minimum piece specifications in 2.2 Utilization, within designated plantation rows are designated for cutting. Designated plantation rows begin with the third row in from the outside of the plantation, then continue every third row. Because of the variability of row direction, it shall be the responsibility of the Purchaser to maintain the third-row sequence. In addition, cut all other species within the sale, except do not cut red oak. If the need arises to remove any trees in order to operate, the Sale Administrator must be contacted prior to cutting any undesignated trees.

#### 2.2 - Utilization

##### 2.2.6 - Roundwood operation required (3/21)

The skidding of whole trees or tree segments with limbs attached is prohibited. All products must be produced as roundwood and forwarded to existing roads or landing areas in final product length.

### 4 - Transportation

#### 4.1 - Construction

##### 4.1.3 - Slash and earthen piles (8/04)

Piles or windrows of earth along roads and landings that have been widened or constructed shall be leveled. Slash from road maintenance or construction, including stumps, shall be dispersed throughout the sale.

##### 4.1.12 - No new roads (1/12)

No new roads will be permitted in any Payment Unit. All operations are limited to existing roads. Skid trails only will be allowed.

#### 4.2 - Maintenance

##### 4.2.5 - Two wheel drive condition (2/04)

All existing trail roads on and adjacent to the sale area must be passable by two-wheel drive traffic for the duration of the sale.

### 5 - Operations

#### 5.1 - Notification

##### 5.1.3 - Well heads and natural gas pipelines (11/15)

The Purchaser is responsible for contacting the gas or pipeline company 14 days prior to operating equipment in the vicinity of well heads or natural gas pipelines.

#### 5.2 - Conduct of Operations

##### 5.2.2 - Hazard Trees/Snags

#### 5.2.2.1 - Den trees (10/16)

Obvious hollow and/or den trees shall be protected and left standing unless they are a safety hazard.

#### 5.2.3 - Operating Restrictions

##### 5.2.3.3 - Bark slippage restriction (3/09)

Within Payment Unit(s) 1 and 2, unless changed by written agreement, cutting and skidding are not permitted during the period of May 1 to July 1. This restriction is because of bark slippage.

##### 5.2.39 - ORV trail/route protection (4/18)

Oxbow Creek Road is an ORV trail or route and is shown on the Timber Sale Map. Do not cut trees or damage posts with yellow ORV markers.

#### 5.4 - Soil Protection

##### 5.4.1 - Rutting restriction, general (7/16)

Operations are to cease immediately if equipment and weather conditions result in rutting of roads and/or skid trails which is 12 inches or greater in depth and 50 feet in length. The Unit Manager or his/her representative may restrict hauling and/or skidding if ruts exceed the specified depth. With the Unit Manager or his/her representative's approval, the Purchaser may return to the area when the risk of rutting has decreased.

### 6 - Safety and Fire Prevention

#### 6.2 - Signing

##### 6.2.1 - Road posting (10/20)

The Purchaser is responsible for posting and maintaining caution signs on Oxbow Creek Road prior to beginning operations. The road must be posted at appropriate distances from the Sale Area to warn of logging activity and truck traffic. Signs must be removed when harvest operations are suspended or completed. The Purchaser will provide these signs.



### TIMBER SALE MAP

This information provided by authority of Part 525, 1994 PA 451, as amended.

Sale Number	Date	
<b>53-026-24</b>	07/25/2024	
Scale	Page	Of
1:7,920	1	1

Forest Management Unit	County	Mapped By: Barnes
Pigeon River Country Mgt Unit	Cheboygan	Cruised By: Barnes

Township	Range	Section(s) and Subdivision(s)
33N	01E	Sec. 25 SW; Sec. 26 E1/2SE;

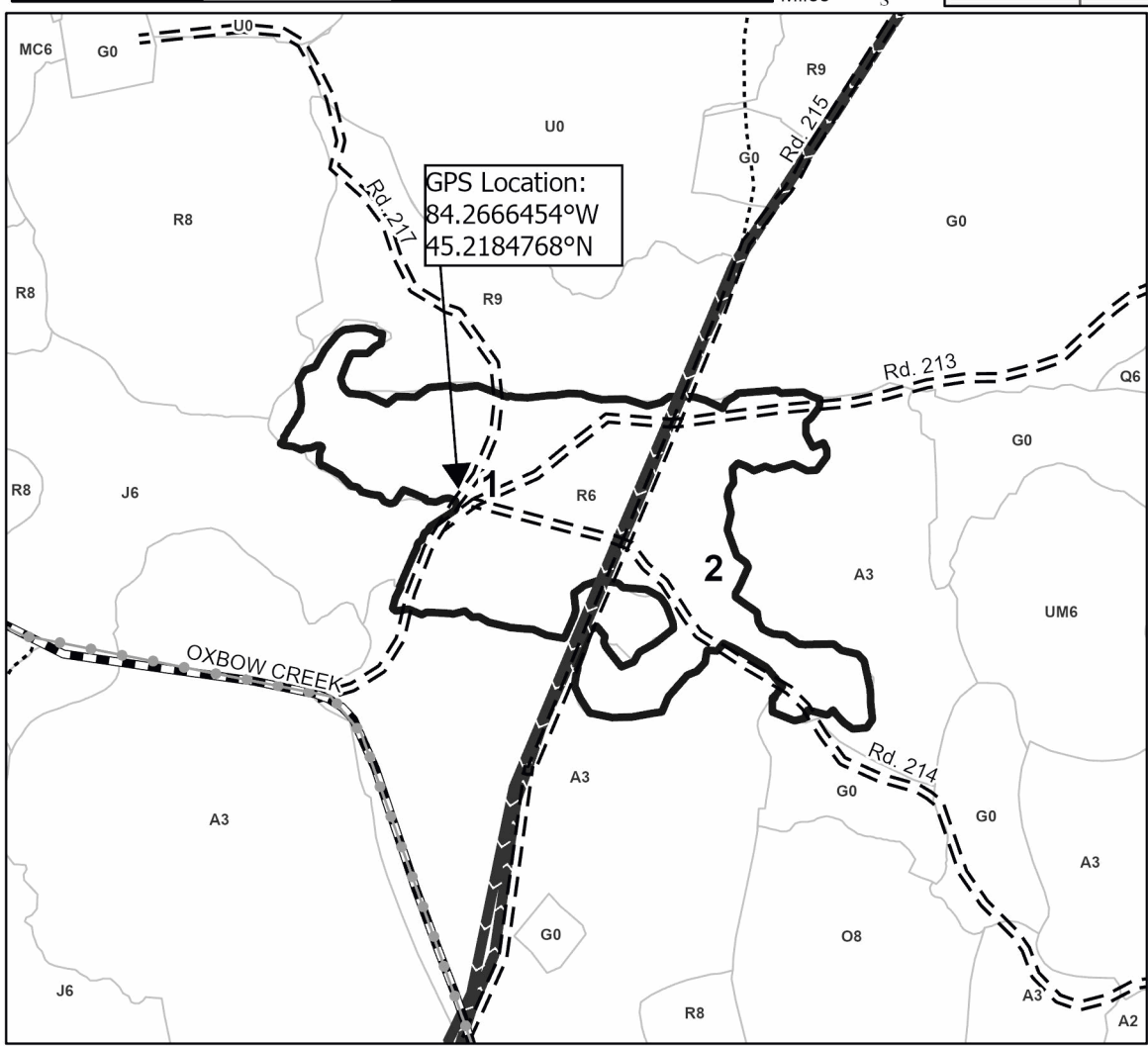
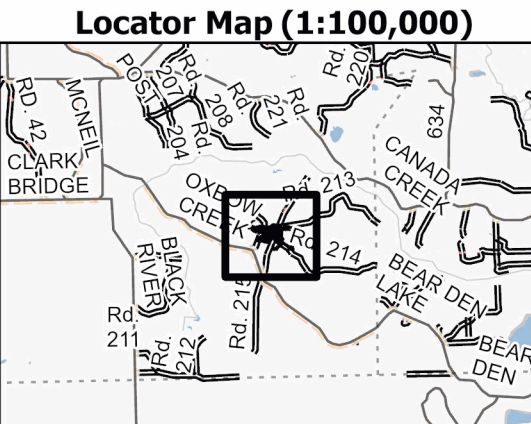
Cover Type			
A = Aspen	J = Jack Pine	O = Oak	U = Upland Brush
B = Paper Birch	K = Rock	P = Lowland Poplar	UM = Upland Mix Forest
C = Cedar	L = Lowland Brush	Q = Mixed Swamp Conifer	V = Bog or Marsh
D = Treed Bog	LM = Lowland Mix Forest	R = Red Pine	W = White Pine
E = Swamp Hardwoods	M = Maple, Beech, Birch	S = Black Spruce	X = Non Stocked
F = Spruce/Fir	MC = Mixed Conifer	T = Tamarack	Y = Sand
G = Grass	MD = Mixed Deciduous	Z = Water	
H = Hemlock	N = Marsh		

Density	
0 = Non Stocked	5 = Pole Timber Medium
1 = Seedling Sapling Poor	6 = Pole Timber Well
2 = Seedling Sapling Medium	7 = Saw Timber Poor
3 = Seedling Sapling Well	8 = Saw Timber Medium
4 = Pole Timber Poor	9 = Saw Timber Well

PU #	Acres
1	17
2	12

**Map Note:**  
The pipeline road designates the payment unit boundary.

**Pipeline Red Pine 2**  
**29.0 Acres**



### Legend

- Against State - Red
- Stand
- Retention Areas
- Recreational Trail
- Pipeline
- Primary Forest Road
- Forest Access Route
- Administrative Access Only
- Paved Road
- Government Gravel/Dirt
- Private Gravel/Dirt

Use QR Code to open Map in App

