



**DEPARTMENT OF NATURAL RESOURCES  
STATE OF MICHIGAN**

**TIMBER SALE PROSPECTUS #7546**

**REVISION NOTICE #1 - February 6, 2025**

SCHEDULED SALE DATE AND TIME: 3:00 p.m. (local time) on Wednesday, February 19, 2025

LOCATION: BALDWIN OFFICE, 2468 W 24th Street, Baldwin, MI 49304

This prospectus has been modified with the following changes.

The sale conditions for the Dead Aim Twice timber sale (63-009-24) have been updated. Please use the attached sale conditions when bidding on this sale and disregard the original sale conditions sent with the prospectus.

The sale conditions for the Dead Aim Twice timber sale (63-009-24) have been updated. Please use the attached sale conditions when bidding on this sale and disregard the original sale conditions sent with the prospectus.

**Old Specs**

**2.1.1 - Clearcut Unit(s) with Unmerchantable Trees**

Within Payment Unit(s) 1, cut all trees that are one (1) inch or more at DBH regardless of merchantability. Within Payment Unit 2 & 6, all trees are designated for cutting when marked with orange paint, regardless of merchantability. In addition, cut all jack pine that are six (6) inches or more at DBH. Within Payment Unit 3, cut all trees that are ten (10) inches or more at DBH, regardless of merchantability. Within Payment Unit 4, cut all trees that are two (2) inches or more at DBH, regardless of merchantability, except do not cut white pine that are 18 inches or more at DBH. Within Payment Unit 5, cut all trees that are two (2) inches or more at DBH, regardless of merchantability, except do not cut white pine that are 20 inches or more at DBH.

**New Specs**

**2.1.1 - Clearcut Unit(s) with Unmerchantable Trees**

Within Payment Unit(s) 1, cut all trees that are one (1) inch or more at DBH regardless of merchantability. Within Payment Unit 2 & 6, all trees are designated for cutting when marked with orange paint, regardless of merchantability. In addition, cut all jack pine that are six (6) inches or more at DBH. Within Payment Unit 3, cut all trees that are ten (10) inches or more at DBH, regardless of merchantability. Within Payment Unit 4, cut all trees that are two (2) inches or more at DBH, regardless of merchantability, except do not cut white pine that are 18 inches or more at DBH.

**2.1.3 - Cut Tree Marked Unit(s)**

Within Payment Unit(s) 5, all trees are designated for cutting when marked with orange paint above and below stump height, regardless of merchantability.

We apologize for any inconvenience this may have caused. If you need assistance, please contact David Fisher at 231-745-4651 ext. 9064.

## Sale Specific Conditions & Requirements

Sale Name: Dead Aim Twice

Sale Number: 63-009-24 Seq#: 1

### 1 - Sale Area

#### 1.2 - Boundaries

##### 1.2.1 - Painted Boundaries (9/19)

The sale boundary and Payment Unit boundaries are marked and identified by blue and red paint and cover type changes. Exterior sale boundary lines against private property are marked with blue paint. Exterior sale boundary lines against state are marked with red paint. The Interior Payment Unit boundary between Payment Unit 2 and 3 is the cover type change from planted red pine to oak (see Timber Sale Map). Retention patches are marked with red paint; no harvesting activities may occur within these areas. The painted boundary line trees are not Included Timber and are to be protected unless marked with orange paint.

### 2 - Timber Specifications

#### 2.1 - Included Timber

##### 2.1.1 - Clearcut Unit(s) with Unmerchantable Trees (6/14)

Within Payment Unit(s) 1, cut all trees that are one (1) inch or more at DBH regardless of merchantability.

Within Payment Unit 2 & 6, all trees are designated for cutting when marked with orange paint, regardless of merchantability. In addition, cut all jack pine that are six (6) inches or more at DBH.

Within Payment Unit 3, cut all trees that are ten (10) inches or more at DBH, regardless of merchantability.

Within Payment Unit 4, cut all trees that are two (2) inches or more at DBH, regardless of merchantability, except do not cut white pine that are 18 inches or more at DBH.

##### 2.1.3 - Cut Tree Marked Unit(s) (12/08)

Within Payment Unit(s) 5, all trees are designated for cutting when marked with orange paint above and below stump height, regardless of merchantability.

### 3 - Payments

#### 3.3 - Pre-measured Sales

##### 3.3.4 - Dividing Payment Units (7/14)

Payment Unit(s) may be divided at the request of the Purchaser and upon approval of the Unit Manager. Dividing Payment Units is a contract modification which requires a Timber Sale Contract Amendment. There will be only one division per Payment Unit.

### 4 - Transportation

#### 4.1 - Construction

##### 4.1.12 - No New Roads (1/12)

No new roads will be permitted. Skid trails only will be allowed.

#### 4.2 - Maintenance

##### 4.2.4 - Grading (10/16)

For completion of the sale, state forest roads must be graded. In general, this will require a road grader or bulldozer to shape up the roads after forest products have been hauled off site. This includes cleaning of drainage areas, grading, crowning and filling with gravel, if necessary. The grading equipment to be used must be approved by the Unit Manager or his/her representative.

**4.2.5 - Two Wheel Drive Condition (2/04)**

All existing trail roads on and adjacent to the Sale Area must be passable by two-wheel drive traffic for the duration of the sale.

**5 - Operations****5.2 - Conduct of Operations****5.2.1 - Slash****5.2.1.8 - Slash Height (12/08)**

No slash or tree tops may exceed 24 inches in height.

**5.2.2 - Hazard Trees/Snags****5.2.2.1 - Den Trees (10/16)**

Obvious hollow and/or den trees shall be protected and left standing unless they are a safety hazard.

**5.2.3 - Operating Restrictions****5.2.3.5 - Oak Wilt Restriction (1/18)**

Within Payment Units 1, 3, and 4, unless changed by written agreement, cutting, skidding, hauling within the sale and brushing of access roads to the sale are not permitted during the period of April 15 to July 15. Operations may be allowed if specific steps are taken to prevent damaging uncut oak during the high-risk period. Those steps may include completing all road brushing before April 15 and clearing a tree-length buffer along uncut oak cover before April 15. This is necessary to reduce the spread of oak wilt. For more information, contact the Unit Manager or his/her representative.

**5.2.38 - No Decking Against Live Trees (2/04)**

Cut products may not be decked against unmarked or designated leave trees.

**5.2.39 - ORV Trail/Route Protection (4/18)**

There is an ORV trail or route and is shown on the Timber Sale Map. Do not cut trees or damage posts with ORV markers. All stumps within 5 feet of the trail must be cut flush with the ground. Maintain a 20-foot-wide slash, debris, and rut free zone daily using the ORV trail or route as the centerline. Do not run equipment down the ORV trail or route. Skidding across the trail or route may only occur in locations approved by the Sale Administrator.

**5.2.41 - Snowmobile Trail Protection (9/11)**

The snowmobile trail is shown on the Timber Sale Map. Do not cut or damage posts with orange trail markers or traffic control signs. If the trail is used, it must be maintained and restored to a condition equal to or better than before the sale. If the trail is used for hauling, it must be graded to the satisfaction of the Unit Manager or his/her representative prior to December 1. If the trail road is to be used for hauling during the snowmobile season, then a snow-covered base must be left on the trail. Maintain a 20-foot-wide slash, debris, and rut free zone daily using the snowmobile trail as the centerline. No decking of forest products will be permitted along the snowmobile trail. All stumps within 20 feet of the snowmobile trail must be cut at ground level. In addition, any trees cut within 5 feet of the trail must have the stumps removed and be disposed of according to the direction of the Unit Manager or his/her representative.

**5.4 - Soil Protection****5.4.1 - Rutting Restriction, General (7/16)**

Operations are to cease immediately if equipment and weather conditions result in rutting of roads and/or skid trails which is 12 inches or greater in depth and 50 feet in length. The Unit Manager or his/her representative may restrict hauling and/or skidding if ruts exceed the specified depth. With the Unit Manager or his/her representative's approval, the Purchaser may return to the area when the risk of rutting has decreased.

5.4.2 - Skid Trails (2/04)

Skid trails up and down slopes should be avoided. If, however, this is unavoidable, these trails will be left in a non-erodible condition using water bars, logs, and slash. Placing of slash on these skid trails while logging is ongoing may alleviate need for any further action. At the direction of the Sale Administrator, seed, fertilizer, and mulch may also be required.

5.4.4 - Slope Protection (9/19)

Skid trails and roads on slopes shall be water barred with

**5.8 - Protection of Endangered Species**

5.8.5 - Protection of Raptor Nests (3/13)

All trees with raptor nests will be protected if found during harvesting operations. Notification will be made to the Unit Manager or his/her representative who will notify the Wildlife Biologist so an onsite evaluation and recommendation can be made, if necessary.

**6 - Safety and Fire Prevention**

**6.2 - Signing**

6.2.1 - Road Posting (10/20)

The Purchaser is responsible for posting and maintaining caution signs on all sale-associated roads prior to beginning operations. The road must be posted approximately 200 feet from the Sale Area to warn of logging activity and truck traffic. Signs must be removed when harvest operations are suspended or completed. The Purchaser will provide these signs.

6.2.2 - Snowmobile Trail Posting (10/20)

The Purchaser is responsible for posting and maintaining caution signs on the snowmobile trail prior to beginning operations during the snowmobile season (approximately December 1 to March 31). The trail must be posted approximately 200 feet from the Sale Area to warn of logging activity and truck traffic. Signs must be removed when harvest operations are suspended or completed. The Purchaser will provide these signs.

6.2.3 - Recreational Trail Posting (10/20)

The Purchaser is responsible for posting and maintaining caution signs on sale-associated ORV trail or routes prior to beginning operations. The trail must be posted approximately 200 feet from the Sale Area to warn of logging activity and truck traffic at both ends of the trail. Signs must be removed when harvest operations are suspended or completed. The Purchaser will provide these signs.



**DEPARTMENT OF NATURAL RESOURCES  
STATE OF MICHIGAN  
TIMBER SALE PROSPECTUS #7546**

SCHEDULED SALE DATE AND TIME: **3:00 p.m. (local time) on February 19, 2025.**

LOCATION: **BALDWIN OFFICE, 2468 W 24TH STREET, BALDWIN, MI 49304.**

CONTACT NAME: David Flsher

PHONE NUMBER: (231) 745-4651

PROSPECTUS NOTE: The bidder is advised to inspect the sale area and review the location, estimated volumes, operating costs and contract terms of proposed sales. Please be aware that some landowners may request 60 days or more notice for access across their land.

Notice is hereby given that bids will be received by the Unit Manager, CADILLAC MANAGEMENT UNIT, for certain timber on the following described lands:

Deja Vu Oak Pine (63-015-24) / T21N, R05W, SEC. 20, SENE.

T21N, R05W, SEC. 21, NENW,S1/2NW,NE,E1/2SW,N1/2SE.

T21N, R05W, SEC. 21, SWSE.

Missaukee County, Advertised Price \$73,603.30, 117.6 Acres, Hardwood, Red Pine.

SALE NOTE: This sale contains areas of declining Oak.

# TIMBER SALE INFORMATION

Deja Vu Oak Pine (63-015-24)  
T21N, R05W, SEC. 20; T21N, R05W, SEC. 21.  
Missaukee County (Advertised Price \$73,603.30)

SALE NOTE: This sale contains areas of declining Oak.

A timber sale contract for this lump sum, sealed bid timber sale will be awarded to the responsible bidder offering the highest sealed bid price. All units of volume listed below were estimated using the Inventory Manager computer program and the new Michigan taper model. Bids must be at or above the following advertised price for each product and species:

<u>PRODUCTS &amp; SPECIES</u>	<u>ESTIMATED UNITS*</u>	<u>ADVERTISED PRICE</u>
Sawtimber		
B. T. Aspen	25.0 MBF	\$ 77.00 / MBF
Black/Red (Hybrid) Oak	70.9 MBF	\$ 92.00 / MBF
Red Maple	9.6 MBF	\$ 72.00 / MBF
Red Pine	151.4 MBF	\$ 85.00 / MBF
White Oak	4.4 MBF	\$ 95.00 / MBF
Pulpwood		
B. T. Aspen	271 Cords	\$ 19.60 / Cord
Mixed Hardwood	388 Cords	\$ 15.35 / Cord
Mixed Oak	977 Cords	\$ 30.45 / Cord
Red Pine	285 Cords	\$ 35.65 / Cord

\* The total volume is statistically estimated within plus (+) or minus (-) 13.56 percent. There are an estimated 2,533 cords on this timber sale, plus or minus 344 cords at the 95% confidence level. The estimated units are final and not subject to adjustment. Prospective bidders are urged to examine this timber and to make their own estimates of quantity and quality.

**BOND AND PAYMENT SCHEDULE:**

1. A bond in the amount of \$5,888.26 to insure faithful performance of the conditions of the contract will be deposited by the successful bidder within 21 days of the sale award.
2. Cutting in any sale or unit without the required advance payment would be considered a trespass.
3. Total payment must be paid in advance or according to the following schedule :
  - (a) Ten percent (10%) of the sale value must be paid within 21 days of the sale award.
  - (b) The 10% down payment will be credited towards the first unit cut.
  - (c) Payment for each of the following units must be made before cutting begins in that unit:
 

PAYMENT UNIT NUMBER	PERCENT OF TOTAL SALE VALUE
01	38.7%
02	17.0%
03	44.3%
4. If no cutting takes place, the 10% down payment will not be refunded.
5. Operations on the contract issued will terminate on 03/31/2028.

**SALE STATISTICS**

Volumes were calculated in cubic feet using the Michigan taper model. Cubic foot volume includes all wood inside bark for the product indicated. For display purposes, cubic feet were converted to cords and MBF using a simple conversion factor, e.g. 79 cubic feet per cord and 185 cubic feet per MBF. The cubic foot volumes are precise; the cords and MBF volumes are not. Cubic foot volume cannot be directly converted to cords or boards with precision.

**SALE VOLUMES**

The total estimated sale volume may not equal the sum of the species/products due to the nature of statistical calculations associated with double sampling methodology.

VOLUME		STATISTICAL RANGE IN CORDS		
TOTAL CUBIC FEET	TOTAL CORDS	PERCENT ERROR	MINIMUM	MAXIMUM
200,138	2,533	13.56%	2,190	2,877

## VDU VOLUMES

A VDU is a Volume Determination Unit. Volumes and their associated statistics are calculated at the VDU level and summarized to the sale level. There is often a one to one relationship between a VDU and a Payment Unit, but not always, depending on the cruise design. Refer to the VDU TO PAYMENT UNIT table.

VDU	VOLUME		PERCENT ERROR	RANGE IN CORDS	
	TOTAL CUBIC FEET	TOTAL CORDS		MINIMUM	MAXIMUM
75	70,940	898	28.66%	641	1,155
88	34,823	441	23.92%	335	546
93	61,435	778	22.05%	606	949
102	32,941	417	29.75%	293	541
<b>TOTAL:</b>	<b>200,138</b>	<b>2,533</b>		<b>1,875</b>	<b>3,192</b>

## VDU TO PAYMENT UNIT

When a VDU is associated with more than one Payment Unit (PU), the VDU volumes are assigned to the PU based on acres of the VDU within the PU.

VDU	VDU ACRES	PU	PU ACRES
75	29.8	1	29.8
88	32.1	2	32.1
93	38.3	3	38.3
102	17.4	3	17.4
<b>TOTAL:</b>	<b>117.6</b>		<b>117.6</b>



**DESCRIPTION OF TIMBER BY PU (PU)**

PU	MARKET GROUP	PRODUCT	QUANTITY	UNIT	ACRES	ADVERTISE PRICE
1	Black/Red (Hybrid Red Maple Red Pine White Oak B. T. Aspen Mixed Hardwood <i>Black Cherry</i> <i>Red Maple</i> Mixed Oak <i>/Red (Hybrid) Oak</i> <i>White Oak</i> Red Pine	Sawtimber	19.7	MBF	29.8	\$28,481.00
			5.1	MBF		
			146.3	MBF		
			2.2	MBF		
		Pulpwood	82	Cords		
			108	Cords		
			17	Cords		
			91	Cords		
			72	Cords		
			62	Cords		
			10	Cords		
			230	Cords		
		2	Black/Red (Hybrid B. T. Aspen Mixed Hardwood <i>Red Maple</i> Mixed Oak <i>/Red (Hybrid) Oak</i>	Sawtimber		
Pulpwood	28			Cords		
	45			Cords		
	45			Cords		
	359			Cords		
	359			Cords		
3	B. T. Aspen Black/Red (Hybrid Red Maple Red Pine White Oak B. T. Aspen Mixed Hardwood <i>Red Maple</i> Mixed Oak <i>/Red (Hybrid) Oak</i> <i>Red Oak</i> <i>White Oak</i> Red Pine	Sawtimber	25.0	MBF	55.7	\$32,620.00
			47.6	MBF		
			4.5	MBF		
			5.1	MBF		
			2.2	MBF		
		Pulpwood	161	Cords		
			235	Cords		
			235	Cords		
			546	Cords		
			465	Cords		
			13	Cords		
			68	Cords		
			55	Cords		
TOTAL:			261.3	MBF		
TOTAL:			1,921	Cords		

## Sale Specific Conditions & Requirements

Sale Name: Deja Vu Oak Pine

Sale Number: 63-015-24 Seq#: 1

### 1 - Sale Area

#### 1.2 - Boundaries

##### 1.2.1 - Painted Boundaries (9/19)

The sale boundary and Payment Unit boundaries are marked and identified by red paint. Exterior sale boundary lines against state are marked with red paint. Retention patches are marked with red paint; no harvesting activities may occur within these areas. The painted boundary line trees are not Included Timber and are to be protected unless marked with orange paint.

### 2 - Timber Specifications

#### 2.1 - Included Timber

##### 2.1.1 - Clearcut Unit(s) with Unmerchantable Trees (6/14)

Within Payment Unit(s) 1, cut all trees that are six (6) inches or more at DBH, except do not cut any white pine or cherry.

Within Payment Units 2 & 3, cut all trees that are two (2) inches or more at DBH, except do not cut any white pine. In addition, do not cut any white oak trees that are 14 inches or more at DBH.

### 3 - Payments

#### 3.3 - Pre-measured Sales

##### 3.3.4 - Dividing Payment Units (7/14)

Payment Unit(s) may be divided at the request of the Purchaser and upon approval of the Unit Manager. Dividing Payment Units is a contract modification which requires a Timber Sale Contract Amendment. There will be only one division per Payment Unit.

### 4 - Transportation

#### 4.1 - Construction

##### 4.1.3 - Slash and Earthen Piles (8/04)

Piles or windrows of earth along roads and landings that have been widened or constructed shall be leveled. Slash from road maintenance or construction, including stumps, shall be dispersed throughout the sale or chipped, utilized or otherwise removed from the sale.

##### 4.1.12 - No New Roads (1/12)

No new roads will be permitted in any Payment Unit. All operations are limited to existing roads. Skid trails only will be allowed.

#### 4.2 - Maintenance

##### 4.2.5 - Two Wheel Drive Condition (2/04)

All existing trail roads on and adjacent to the Sale Area must be passable by two-wheel drive traffic for the duration of the sale.

### 5 - Operations

#### 5.2 - Conduct of Operations

##### 5.2.1 - Slash

###### 5.2.1.8 - Slash Height (12/08)

No slash or tree tops may exceed 24 inches in height.

##### 5.2.2 - Hazard Trees/Snags

#### 5.2.2.1 - Den Trees (10/16)

Obvious hollow and/or den trees shall be protected and left standing unless they are a safety hazard.

#### 5.2.3 - Operating Restrictions

##### 5.2.3.5 - Oak Wilt Restriction (1/18)

Within Payment Units 2 & 3, unless changed by written agreement, cutting, skidding, hauling within the sale and brushing of access roads to the sale are not permitted during the period of April 15 to July 15. Operations may be allowed if specific steps are taken to prevent damaging uncut oak during the high-risk period. Those steps may include completing all road brushing before April 15 and clearing a tree-length buffer along uncut oak cover before April 15. This is necessary to reduce the spread of oak wilt. For more information, contact the Unit Manager or his/her representative.

##### 5.2.32 - Decking/Landing Restoration (9/13)

All decking and landing areas must have the surface area restored to a condition equal to or better than before. This is to ensure the proper regeneration of the stand. Wood debris, chips and "cookies" from trimmings must be removed or scattered away from landing and loading areas and may not be windrowed on the edge.

##### 5.2.38 - No Decking Against Live Trees (2/04)

Cut products may not be decked against unmarked or designated leave trees.

#### 5.4 - Soil Protection

##### 5.4.1 - Rutting Restriction, General (7/16)

Operations are to cease immediately if equipment and weather conditions result in rutting of roads and/or skid trails which is 12 inches or greater in depth and 50 feet in length. The Unit Manager or his/her representative may restrict hauling and/or skidding if ruts exceed the specified depth. With the Unit Manager or his/her representative's approval, the Purchaser may return to the area when the risk of rutting has decreased.

#### 5.8 - Protection of Endangered Species

##### 5.8.5 - Protection of Raptor Nests (3/13)

All trees with raptor nests will be protected if found during harvesting operations. Notification will be made to the Unit Manager or his/her representative who will notify the Wildlife Biologist so an onsite evaluation and recommendation can be made, if necessary.

### **6 - Safety and Fire Prevention**

#### 6.2 - Signing

##### 6.2.1 - Road Posting (10/20)

The Purchaser is responsible for posting and maintaining caution signs on sale associated roads prior to beginning operations. The road must be posted at appropriate distances from the Sale Area to warn of logging activity and truck traffic. Signs must be removed when harvest operations are suspended or completed. The Purchaser will provide these signs.

### **7 - Other Conditions**

#### 7.3 - Contract Modifications

##### 7.3.2 - Modification for Oak Wilt (2/05)

Within the Sale Area, there may be patches of oak wilt. If oak wilt is identified within the Sale Area, this contract may be modified. The following modifications could occur: time of cutting, species to cut, volume to harvest, or various others dealing with the treatment of oak wilt. If a species is not specified in this contract, it shall be paid for at the average price received for that species and product.

#### 7.5 - Loss

##### 7.5.1 - Deteriorating Timber (7/09)

The Sale Area has received damage from oak wilt and/or oak decline in Payment Unit 2. The Purchaser should harvest the wood as soon as possible. The Department of Natural Resources is held free of responsibility of any further damage or deterioration due to delay in harvesting.





### TIMBER SALE MAP

This information provided by authority of Part 525, 1994 PA 451, as amended.

Sale Number	Date	
<b>63-015-24</b>	09/16/2024	
Scale	Page	Of
1:15,840	1	1

Forest Management Unit	County	Mapped By: Krugh
Cadillac	Missaukee	Cruised By: Edison

Township	Range	Section(s) and Subdivision(s)
21N	5W	20 SENE 21 SWSE 21 NENW,S1/2NW,NE,E1/2SW,N1/2SE

Cover Type			
A = Aspen	J = Jack Pine	O = Oak	U = Upland Brush
B = Paper Birch	K = Rock	P = Lowland Poplar	UM = Upland Mix Forest
C = Cedar	L = Lowland Brush	Q = Mixed Swamp Conifer	V = Bog or Marsh
D = Treed Bog	LM = Lowland Mix Forest	R = Red Pine	W = White Pine
E = Swamp Hardwoods	M = Maple, Beech, Birch	S = Black Spruce	X = Non Stocked
F = Spruce/Fir	MC = Mixed Conifer	T = Tamarack	Y = Sand
G = Grass	MD = Mixed Deciduous	Z = Water	
H = Hemlock	N = Marsh		

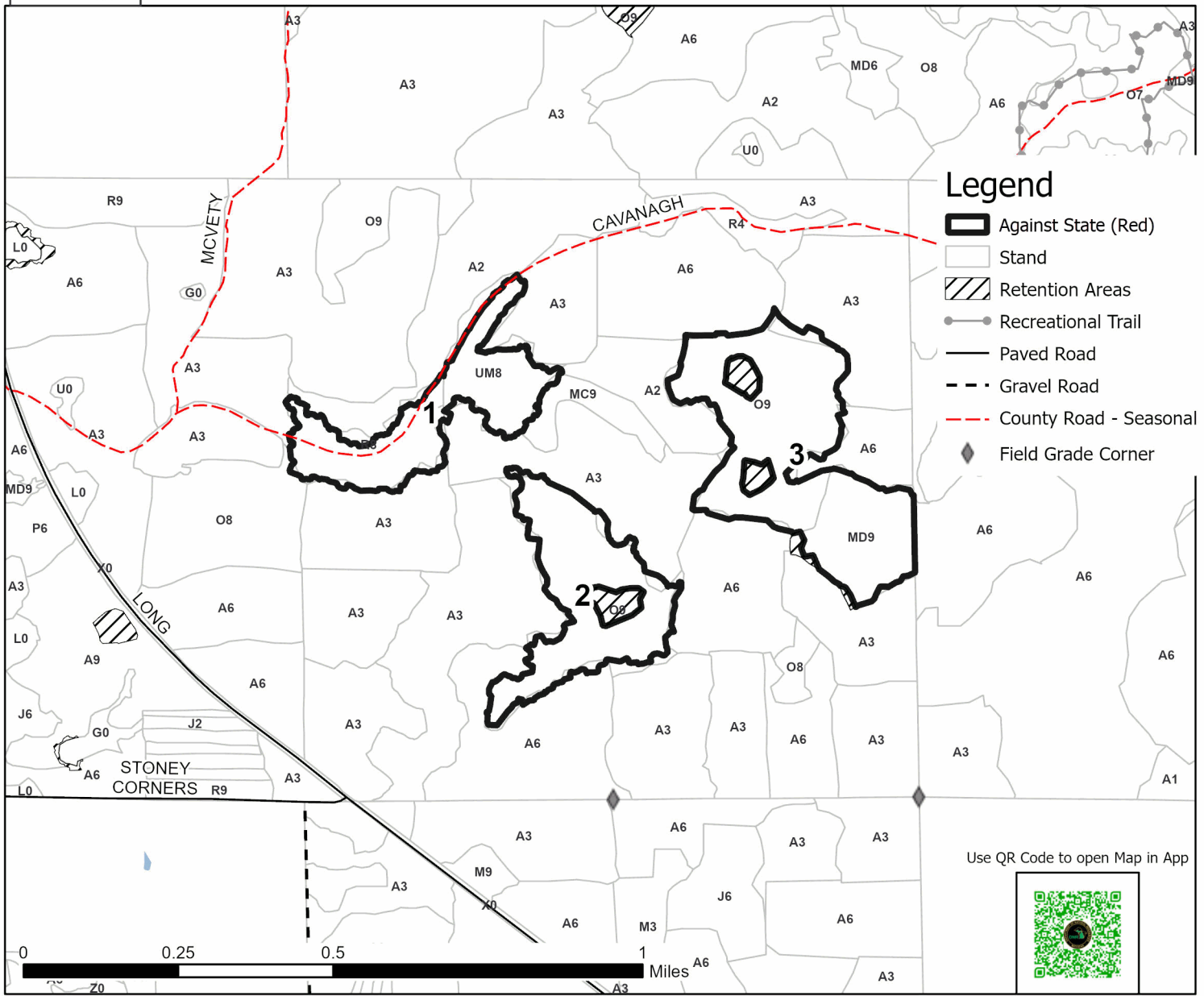
Density	
0 = Non Stocked	5 = Pole Timber Medium
1 = Seedling Sapling Poor	6 = Pole Timber Well
2 = Seedling Sapling Medium	7 = Saw Timber Poor
3 = Seedling Sapling Well	8 = Saw Timber Medium
4 = Pole Timber Poor	9 = Saw Timber Well



PU #	Acres
1	29.8
2	32.1
3	55.7

## Deja Vu Oak Pine

### Acres 117.6



Legend	
	Against State (Red)
	Stand
	Retention Areas
	Recreational Trail
	Paved Road
	Gravel Road
	County Road - Seasonal
	Field Grade Corner

Use QR Code to open Map in App

