



**DEPARTMENT OF NATURAL RESOURCES  
STATE OF MICHIGAN  
TIMBER SALE PROSPECTUS #7500**

**SCHEDULED SALE DATE AND TIME: 9:00 a.m. (local time) on December 19, 2024.**

**LOCATION: PIGEON RIVER COUNTRY MGMT UNIT, PO BOX 456, 9966 TWIN LAKES ROAD, VANDERBILT, MI**

**CONTACT NAME: Mark Monroe**

**PHONE NUMBER: (989) 983-4101**

**PROSPECTUS NOTE: The bidder is advised to inspect the sale area and review the location, estimated volumes, operating costs and contract terms of proposed sales. Please be aware that some landowners may request 60 days or more notice for access across their land.**

Notice is hereby given that bids will be received by the Unit Manager, PIGEON RIVER COUNTRY MANAGEMENT UNIT, for certain timber on the following described lands:

Aspen Edges (53-028-24) / T33N, R01E, SEC. 10, N1/2NE.

T33N, R01E, SEC. 3, SWNE, SE.

Cheboygan County, Advertised Price \$32,273.95, 49.6 Acres, Aspen, Red Pine.

**SALE NOTE:** A recreation site such as a trail, pathway, or campground is within the sale area or the vicinity. Certain restrictions/specifications may be applicable including time restrictions.

# TIMBER SALE INFORMATION

Aspen Edges (53-028-24)

T33N, R01E, SEC. 10; T33N, R01E, SEC. 3.

Cheboygan County (Advertised Price \$32,273.95)

SALE NOTE: A recreation site such as a trail, pathway, or campground is within the sale area or the vicinity. Certain restrictions/specifications may be applicable including time restrictions.

A timber sale contract for this lump sum, sealed bid timber sale will be awarded to the responsible bidder offering the highest sealed bid price. All units of volume listed below were estimated using the Inventory Manager computer program and the new Michigan taper model. Bids must be at or above the following advertised price for each product and species:

<u>PRODUCTS &amp; SPECIES</u>	<u>ESTIMATED UNITS*</u>	<u>ADVERTISED PRICE</u>
Sawtimber		
Red Pine	32.1 MBF	\$ 140.00 / MBF
Pulpwood		
Balsam Fir	46 Cords	\$ 22.55 / Cord
Mixed Aspen	1,090 Cords	\$ 18.70 / Cord
Mixed Hardwood	65 Cords	\$ 12.15 / Cord
Red Pine	109 Cords	\$ 51.10 / Cord

\* The total volume is statistically estimated within plus (+) or minus (-) 22.99 percent. There are an estimated 1,384 cords on this timber sale, plus or minus 318 cords at the 95% confidence level. The estimated units are final and not subject to adjustment. Prospective bidders are urged to examine this timber and to make their own estimates of quantity and quality.

**BOND AND PAYMENT SCHEDULE:**

1. A bond in the amount of \$3,227.40 to insure faithful performance of the conditions of the contract will be deposited by the successful bidder within 21 days of the sale award.
2. Cutting in any sale or unit without the required advance payment would be considered a trespass.
3. Total payment must be paid in advance or according to the following schedule :
  - (a) Ten percent (10%) of the sale value must be paid within 21 days of the sale award.
  - (b) The 10% down payment will be credited towards the first unit cut.
  - (c) Payment for each of the following units must be made before cutting begins in that unit:
 

PAYMENT UNIT NUMBER	PERCENT OF TOTAL SALE VALUE
01	31.4%
02	6.6%
03	13.8%
04	31.2%
05	17.0%
4. If no cutting takes place, the 10% down payment will not be refunded.
5. Operations on the contract issued will terminate on 06/30/2028.

**SALE STATISTICS**

Volumes were calculated in cubic feet using the Michigan taper model. Cubic foot volume includes all wood inside bark for the product indicated. For display purposes, cubic feet were converted to cords and MBF using a simple conversion factor, e.g. 79 cubic feet per cord and 185 cubic feet per MBF. The cubic foot volumes are precise; the cords and MBF volumes are not. Cubic foot volume cannot be directly converted to cords or boards with precision.

**SALE VOLUMES**

The total estimated sale volume may not equal the sum of the species/products due to the nature of statistical calculations associated with double sampling methodology.

VOLUME		STATISTICAL RANGE IN CORDS		
TOTAL CUBIC FEET	TOTAL CORDS	PERCENT ERROR	MINIMUM	MAXIMUM
109,300	1,384	22.99%	1,065	1,702

**VDU VOLUMES**

A VDU is a Volume Determination Unit. Volumes and their associated statistics are calculated at the VDU level and summarized to the sale level. There is often a one to one relationship between a VDU and a Payment Unit, but not always, depending on the cruise design. Refer to the VDU TO PAYMENT UNIT table.

VDU	VOLUME		PERCENT ERROR	RANGE IN CORDS	
	TOTAL CUBIC FEET	TOTAL CORDS		MINIMUM	MAXIMUM
12	14,528	184	54.81%	83	285
17	43,726	553	37.62%	345	762
30	18,749	237	56.60%	103	372
47	23,330	295	59.94%	118	472
79	8,966	113	106.29%	0	234
<b>TOTAL:</b>	<b>109,300</b>	<b>1,384</b>		<b>650</b>	<b>2,125</b>

**VDU TO PAYMENT UNIT**

When a VDU is associated with more than one Payment Unit (PU), the VDU volumes are assigned to the PU based on acres of the VDU within the PU.

VDU	VDU ACRES	PU	PU ACRES
12	8.1	4	8.1
17	19.7	1	19.7
30	6.4	3	6.4
47	9.9	5	9.9
79	5.5	2	5.5
<b>TOTAL:</b>	<b>49.6</b>		<b>49.6</b>

**DESCRIPTION OF TIMBER BY PU (PU)**

PU	MARKET GROUP	PRODUCT	QUANTITY	UNIT	ACRES	ADVERTISE PRICE	
1	Balsam Fir	Pulpwood	40	Cords	19.7	\$10,160.10	
	Mixed Aspen		460	Cords			
	<i>B. T. Aspen</i>		199	<i>Cords</i>			
	<i>Quaking Aspen</i>		261	<i>Cords</i>			
	Mixed Hardwood		54	Cords			
	<i>Red Maple</i>		<i>Sawtimber</i>	1.9			<i>MBF</i>
	<i>Red Maple</i>		<i>Pulpwood</i>	30			<i>Cords</i>
	<i>Sugar Maple</i>			20			<i>Cords</i>
2	Balsam Fir	Pulpwood	6	Cords	5.5	\$2,116.55	
	Mixed Aspen		104	Cords			
	<i>B. T. Aspen</i>		46	<i>Cords</i>			
	<i>Quaking Aspen</i>		58	<i>Cords</i>			
	Mixed Hardwood		3	Cords			
	<i>Sugar Maple</i>		3	<i>Cords</i>			
3	Mixed Aspen	Pulpwood	238	Cords	6.4	\$4,450.60	
	<i>B. T. Aspen</i>		37	<i>Cords</i>			
	<i>Quaking Aspen</i>		201	<i>Cords</i>			
4	Red Pine	Sawtimber	32.1	MBF	8.1	\$10,063.90	
	Red Pine	Pulpwood	109	Cords			
5	Mixed Aspen	Pulpwood	288	Cords	9.9	\$5,482.80	
	<i>B. T. Aspen</i>		152	<i>Cords</i>			
	<i>Balsam Poplar</i>		14	<i>Cords</i>			
	<i>Quaking Aspen</i>		122	<i>Cords</i>			
	Mixed Hardwood		8	Cords			
	<i>Sugar Maple</i>		8	<i>Cords</i>			
TOTAL:			32.1	MBF			
TOTAL:			1,310	Cords			

## Sale Specific Conditions & Requirements

Sale Name: Aspen Edges

Sale Number: 53-028-24 Seq#: 1

### 1 - Sale Area

#### 1.2 - Boundaries

##### 1.2.1 - Painted boundaries (9/19)

The sale boundary and Payment Unit boundaries are marked and identified by red and yellow paint. Exterior sale boundary lines against state are marked with red paint. Interior Payment Unit boundaries are marked with yellow paint. Retention patches are marked with red paint; no harvesting activities may occur within these areas. Red painted boundary line trees are not Included Timber and are to be protected. Yellow painted aspen trees designating an interior Payment Unit boundary are only to be cut when all surrounding Payment Units have been paid, any other tree species marked with yellow paint must be left uncut.

### 2 - Timber Specifications

#### 2.1 - Included Timber

##### 2.1.1 - Clearcut unit(s) with unmerchantable trees (6/14)

Within Payment Unit(s) 1-3, cut all trees that are two (2) inches or more at DBH, except do not cut white pine, red oak, cedar, elm, basswood, or trees marked with green paint. In addition, do not cut any ash or black cherry that are five (5) inches or more at DBH.

Within Payment Unit 5, cut all trees that are two (2) inches or more at DBH, except do not cut elm, paper birch, red oak, or trees marked with green paint. In addition, do not cut any ash or black cherry that are five (5) inches or more at DBH.

##### 2.1.5 - Overstory removal unit(s) (8/11)

Within Payment Unit(s) 4, all red pine and aspen trees that are four (4) inches or more at DBH, which meet minimum piece specifications in 2.2 Utilization, are designated for cutting. Do not cut any other tree species.

#### 2.2 - Utilization

##### 2.2.4 - Skidding length (2/14)

Skidding of unlimbed tops or lengths over 17 feet is not permissible in Payment Unit 4.

##### 2.2.6 - Roundwood operation required (3/21)

The skidding of whole trees or tree segments with limbs attached is prohibited. All products must be produced as roundwood and forwarded to existing roads or landing areas in final product length.

### 3 - Payments

#### 3.4 - Damaged Timber

##### 3.4.1 - Damaged timber (7/16)

General Condition and Requirement 3.4 Damaged Timber, defines liquidated damages for undesignated live merchantable trees which are cut or injured. No damage is acceptable to undesignated live merchantable trees. Within the Sale Area, if more than 10% of trees (> 4.5" DBH) within a specified area of the sale are damaged, liquidated damages will be assessed for all trees damaged. Rates will be in accordance with General Condition and Requirement 3.4 Damaged Timber.

In addition, extreme care should be taken to avoid damage to sugar maple seedlings and saplings, particularly in Payment Units 3-4. Within the Sale Area, if more than 20% of the tree seedlings or saplings (1/4" to 4.5" DBH) within a specified portion of the Sale Area are damaged, liquidated damages will be assessed at \$500 per acre for all acreage within that specified portion of the Sale Area that was damaged.

#### 3.6 - Payment Unit Cutting Schedule

##### 3.6.8 - Operating period (5/16)

Once cutting begins, operations must continue until all Payment Units are completed. This requirement is to limit deer and elk browse.

## 4 - Transportation

### 4.1 - Construction

#### 4.1.3 - Slash and earthen piles (8/04)

Piles or windrows of earth along roads and landings that have been widened or constructed shall be leveled. Slash from road maintenance or construction, including stumps, shall be dispersed throughout the sale.

#### 4.1.7 - Road closure (10/11)

Overgrown roads that are reopened must be blocked to vehicle traffic within 30 days of completion of hauling. In general, this will require constructing a four (4') foot high berm of stumps and logs covered with earth. These roads must be rendered impassable to cars and trucks.

#### 4.1.12 - No new roads (1/12)

No new roads will be permitted in any Payment Unit. All operations are limited to existing roads.

### 4.2 - Maintenance

#### 4.2.2 - Fill material (4/07)

To maintain roads, fill material may be needed in areas where "holes" exist or may be expected to develop. This fill material should be placed before trucking begins. Sand or gravel may not be sourced from adjacent State-owned lands.

#### 4.2.4 - Grading (10/16)

For completion of the sale, and if deemed necessary by the Timber Sale Administrator, state forest roads must be graded. In general, this will require a road grader or bulldozer to shape up the roads after forest products have been hauled off site. This includes cleaning of drainage areas, grading, crowning and filling with gravel, if necessary. The grading equipment to be used must be approved by the Unit Manager or his/her representative.

#### 4.2.5 - Two wheel drive condition (2/04)

All existing trail roads on and adjacent to the sale area must be passable by two-wheel drive traffic for the duration of the sale.

## 5 - Operations

### 5.2 - Conduct of Operations

#### 5.2.1 - Slash

##### 5.2.1.11 - Slash for reforestation (3/21)

To facilitate reforestation, the Sale Area shall be left with slash evenly distributed. Bunched tops within the cutting area shall be broken up and scattered. Stumps shall be cut low to the ground. Processing sites shall not be left with a compacted layer of slash; tops from these sites shall be hauled back into the cut area and scattered.

#### 5.2.2 - Hazard Trees/Snags

##### 5.2.2.1 - Den trees (10/16)

Obvious hollow and/or den trees shall be protected and left standing unless they are a safety hazard.

#### 5.2.4 - Dead and Down Creation

##### 5.2.4.7 - Dead and down creation: hare, grouse, deer and other species (5/15)

To improve horizontal cover habitat for snowshoe hare, grouse, deer, and other species, the Purchaser is to push over all trees marked with a blue X. These trees should be tipped over with the root ball still attached so the base of the tree is suspended off the ground. The crown of the fallen tree should be at or near ground level after it is pushed over.

#### 5.2.22 - Operating Caution

##### 5.2.22.1 - Operating caution (6/11)

It is recommended, but not required, that within Payment Unit(s) 1-2, cutting, skidding, and hauling occur during dry

summer or frozen winter conditions. The reason for the recommendation is because of seasonally wet ground within these units.

#### 5.2.29 - Shrub protection (1/20)

Do not cut or damage hawthorn or juneberry (serviceberry). These woody-shrub plants are highly beneficial to various wildlife species.

#### 5.2.32 - Decking/landing restoration (9/13)

All decking and landing areas must have the surface area restored to a condition equal to or better than before. This is to ensure the proper regeneration of the stand. Wood debris, chips and "cookies" from trimmings must be removed or scattered away from landing and loading areas and may not be windrowed on the edge.

#### 5.2.38 - No decking against live trees (2/04)

Cut products may not be decked against unmarked or designated leave trees.

#### 5.2.40 - Pathway protection (10/10)

The High Country Pathway is a hiking trail and is shown on the Timber Sale Map. Do not cut trees or damage posts with blue pathway markers. Maintain a 20-foot wide slash, debris, and rut free zone daily, using the pathway as the centerline. Do not run equipment down the pathway. Skidding across the trail may only occur in locations approved by the Sale Administrator.

### 5.4 - Soil Protection

#### 5.4.1 - Rutting restriction, general (7/16)

Operations are to cease immediately if equipment and weather conditions result in rutting of roads and/or skid trails which is 12 inches or greater in depth and 25 feet in length. The Unit Manager or his/her representative may restrict hauling and/or skidding if ruts exceed the specified depth. With the Unit Manager or his/her representative's approval, the Purchaser may return to the area when the risk of rutting has decreased.

### 5.8 - Protection of Endangered Species

#### 5.8.5 - Protection of raptor nests (3/13)

All trees with raptor nests will be protected if found during harvesting operations. Notification will be made to the Unit Manager or his/her representative who will notify the Wildlife Biologist so an on-site evaluation and recommendation can be made, if necessary.

## 6 - Safety and Fire Prevention

### 6.2 - Signing

#### 6.2.1 - Road posting (10/20)

The Purchaser is responsible for posting and maintaining caution signs on Road 23 prior to beginning operations. The road must be posted at appropriate distances from the Sale Area to warn of logging activity and truck traffic. Signs must be removed when harvest operations are suspended or completed. The Purchaser will provide these signs.

#### 6.2.3 - Recreational trail posting (10/20)

The Purchaser is responsible for posting and maintaining caution signs on the High Country Pathway prior to beginning operations. The trail must be posted at appropriate distances from the Sale Area to warn of logging activity and truck traffic at both ends of the trail. Signs must be removed when harvest operations are suspended or completed. The Purchaser will provide these signs.

## 7 - Other Conditions

### 7.2 - Extensions

#### 7.2.2 - No extensions (3/09)

There will be no extensions granted on this contract.



### TIMBER SALE MAP

This information provided by authority of Part 525, 1994 PA 451, as amended.

Sale Number  
**53-028-24**

Date  
**07/29/2024**

Forest Management Unit  
Pigeon River Country Mgt Unit

County  
Cheboygan

Mapped By: Rekowski  
Cruised By: Rekowski

Scale  
1:10,000

Page  
1

Of  
1

Township  
33N

Range  
01E

Section(s) and Subdivision(s)  
Sec. 10 N1/2NE; Sec. 3 SWNE,SE;

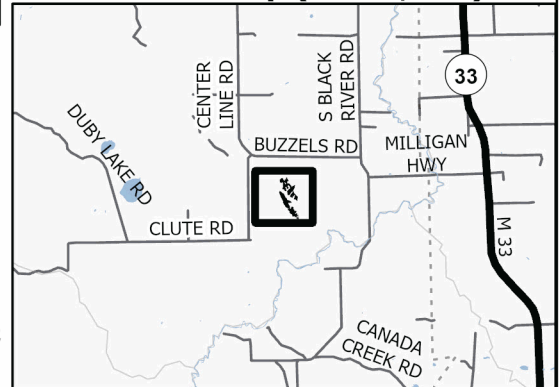
#### Cover Type

A = Aspen	J = Jack Pine	O = Oak	U = Upland Brush
B = Paper Birch	K = Rock	P = Lowland Poplar	UM = Upland Mix Forest
C = Cedar	L = Lowland Brush	Q = Mixed Swamp Conifer	V = Bog or Marsh
D = Treed Bog	LM = Lowland Mix Forest	R = Red Pine	W = White Pine
E = Swamp Hardwoods	M = Maple, Beech, Birch	S = Black Spruce	X = Non Stocked
F = Spruce/Fir	MC = Mixed Conifer	T = Tamarack	Y = Sand
G = Grass	MD = Mixed Deciduous	Z = Water	
H = Hemlock	N = Marsh		

#### Density

0 = Non Stocked	5 = Pole Timber Medium
1 = Seedling Sapling Poor	6 = Pole Timber Well
2 = Seedling Sapling Medium	7 = Saw Timber Poor
3 = Seedling Sapling Well	8 = Saw Timber Medium
4 = Pole Timber Poor	9 = Saw Timber Well

#### Locator Map (1:200,000)

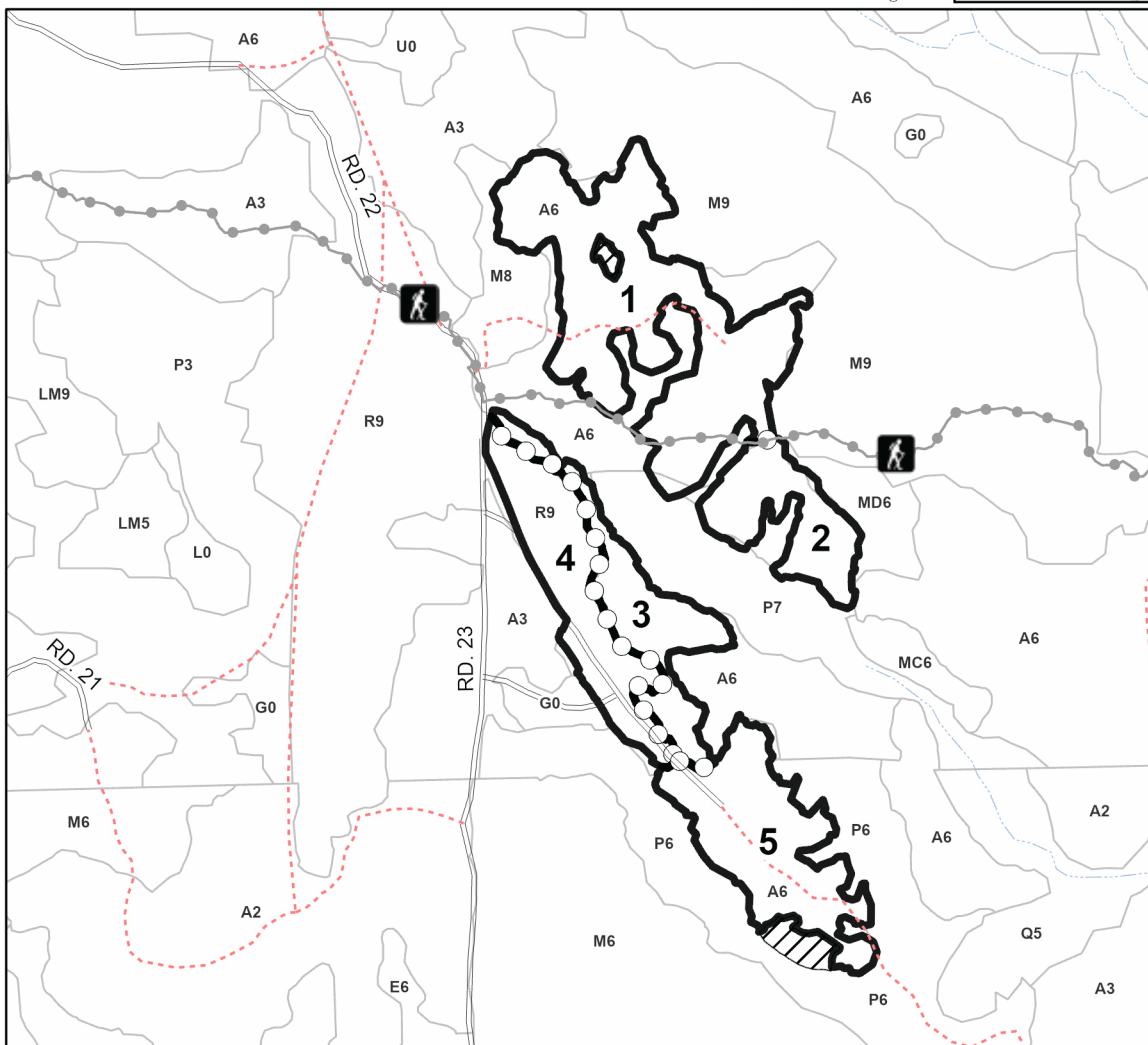
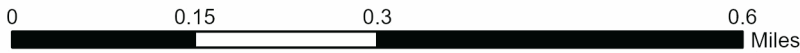


#### PU # Acres

1	19.7
2	5.5
3	6.4
4	8.1
5	9.9

## Aspen Edges

### 49.6 Acres



#### Legend

- Against State (Red)
- Retention Areas (Red)
- Payment Unit (Yellow)
- Stand
- Recreational Trail
- Secondary Forest Road
- Administrative Access Only
- Intermittent Stream

Use QR Code to open Map in App

