



**DEPARTMENT OF NATURAL RESOURCES
STATE OF MICHIGAN
TIMBER SALE PROSPECTUS #7695**

SCHEDULED SALE DATE AND TIME: 2:00 p.m. (local time) on February 23, 2026.

LOCATION: GWINN MGMT UNIT, 410 WEST M 35, GWINN, MI 49841.

CONTACT NAME: Mike Brodeur

PHONE NUMBER: (906) 346-9201

PROSPECTUS NOTE: The bidder is advised to inspect the sale area and review the location, estimated volumes, operating costs and contract terms of proposed sales. Please be aware that some landowners may request 60 days or more notice for access across their land.

Notice is hereby given that bids will be received by the Unit Manager, GWINN MANAGEMENT UNIT, for certain timber on the following described lands:

Ross's Maple Split (32-014-25) / T43N, R26W, SEC. 16, NW, S1/2NE, NWSW, NESE.

T43N, R26W, SEC. 17, NW, NWNE, S1/2NE, SW, SE.

T43N, R26W, SEC. 18, N1/2NE, SENE.

T43N, R26W, SEC. 7, SESE.

T43N, R26W, SEC. 8, S1/2SW, SWSE.

T43N, R26W, SEC. 9, SWSW.

Marquette County, Advertised Price \$129,720.25, 440.6 Acres, Hardwood, Sugar Maple.

SALE NOTE: Within Payment Unit(s) 12, 14, 15, 16, and 17, unless changed by written agreement, cutting, skidding, and hauling are limited to frozen conditions, generally the period of 12/01 to 04/01.

This sale requires the installation of one temporary stream crossing. The stream has a 6ft bankfull width.

Access to the sale area requires permission to cross Private Lands from Private Landowner(s) (Lyme Great Lakes Timber). Permission for access across Private Lands is the responsibility of the Purchaser.

Payment Unit 17 is a scaled unit and an Optional Payment Unit.

Access may be through private land.

TIMBER SALE INFORMATION

Ross's Maple Split (32-014-25)

T43N, R26W, SEC. 16; T43N, R26W, SEC. 17; T43N, R26W, SEC. 18; T43N, R26W, SEC. 7; T43N, R26W, SEC. 8; T43N, R26W, SEC. 9
Marquette County (Advertised Price \$129,720.25)

SALE NOTE: Within Payment Unit(s) 12, 14, 15, 16, and 17, unless changed by written agreement, cutting, skidding, and hauling are limited to frozen conditions, generally the period of 12/01 to 04/01.

This sale requires the installation of one temporary stream crossing. The stream has a 6ft bankfull width.

Access to the sale area requires permission to cross Private Lands from Private Landowner(s) (Lyme Great Lakes Timber). Permission for access across Private Lands is the responsibility of the Purchaser.

Payment Unit 17 is a scaled unit and an Optional Payment Unit.

Access may be through private land.

A timber sale contract for this mixed, sealed bid timber sale will be awarded to the responsible bidder offering the highest sealed bid price. All units of volume listed below were estimated using the Inventory Manager computer program and the new Michigan taper model. Bids must be at or above the following advertised price for each product and species:

| <u>PRODUCTS & SPECIES</u> | <u>ESTIMATED UNITS*</u> | <u>ADVERTISED PRICE</u> |
|-------------------------------|-------------------------|-------------------------|
| Sawtimber | | |
| Basswood | 133.4 MBF | \$ 67.00 / MBF |
| Red Maple | 2.7 MBF | \$ 95.00 / MBF |
| Sugar Maple | 326.8 MBF | \$ 199.00 / MBF |
| Pulpwood | | |
| Balsam Fir | 93 Cords | \$ 10.70 / Cord |
| Balsam Poplar | 56 Cords | \$ 22.85 / Cord |
| Basswood | 332 Cords | \$ 21.50 / Cord |
| Mixed Hardwood | 89 Cords | \$ 12.15 / Cord |
| Mixed Spruce | 405 Cords | \$ 11.40 / Cord |
| Quaking Aspen | 395 Cords | \$ 22.85 / Cord |
| Red Maple | 113 Cords | \$ 12.15 / Cord |
| Sugar Maple | 2,366 Cords | \$ 12.15 / Cord |
| Tamarack | 94 Cords | \$ 13.15 / Cord |

* The total volume is statistically estimated within plus (+) or minus (-) 9.44 percent. There are an estimated 5,026 cords on this timber sale, plus or minus 475 cords at the 95% confidence level. The estimated units are final and not subject to adjustment. Prospective bidders are urged to examine this timber and to make their own estimates of quantity and quality.

BOND AND PAYMENT SCHEDULE:

1. A bond in the amount of \$12,972.03 to insure faithful performance of the conditions of the contract will be deposited by the successful bidder within 21 days of the sale award.
2. Cutting in any sale or unit without the required advance payment would be considered a trespass.
3. Total payment must be paid in advance or according to the following schedule:
 - (a) Ten percent (10%) of the sale value must be paid within 21 days of the sale award.
 - (b) The 10% down payment will be credited towards the first unit cut.

(c) Payment for each of the following units must be made before cutting begins in that unit:

| PAYMENT UNIT NUMBER | PERCENT OF TOTAL SALE VALUE |
|---------------------|-----------------------------|
| 01 | 13.0% |
| 02 | 10.3% |
| 03 | 3.3% |
| 04 | 10.9% |
| 05 | 8.9% |
| 06 | 9.5% |
| 07 | 5.9% |
| 08 | 5.1% |
| 09 | 4.2% |
| 10 | 9.8% |
| 11 | 4.4% |
| 12 | 2.5% |
| 13 | 6.2% |
| 14 | 0.7% |
| 15 | 0.8% |
| 16 | 1.0% |
| 17 | 3.5% |

4. If no cutting takes place, the 10% down payment will not be refunded.

5. Operations on the contract issued will terminate on 06/30/2030.

SALE STATISTICS

Volumes were calculated in cubic feet using the Michigan taper model. Cubic foot volume includes all wood inside bark for the product indicated. For display purposes, cubic feet were converted to cords and MBF using a simple conversion factor, e.g. 79 cubic feet per cord and 185 cubic feet per MBF. The cubic foot volumes are precise; the cords and MBF volumes are not. Cubic foot volume cannot be directly converted to cords or boards with precision.

SALE VOLUMES

The total estimated sale volume may not equal the sum of the species/products due to the nature of statistical calculations associated with double sampling methodology.

| VOLUME | | | STATISTICAL RANGE IN CORDS | |
|------------------|-------------|---------------|----------------------------|---------|
| TOTAL CUBIC FEET | TOTAL CORDS | PERCENT ERROR | MINIMUM | MAXIMUM |
| 397,041 | 5,026 | 9.44% | 4,551 | 5,501 |

VDU VOLUMES

A VDU is a Volume Determination Unit. Volumes and their associated statistics are calculated at the VDU level and summarized to the sale level. There is often a one to one relationship between a VDU and a Payment Unit, but not always, depending on the cruise design. Refer to the VDU TO PAYMENT UNIT table.

| | VOLUME | | | RANGE IN CORDS | |
|---------------|------------------|--------------|---------------|----------------|--------------|
| VDU | TOTAL CUBIC FEET | TOTAL CORDS | PERCENT ERROR | MINIMUM | MAXIMUM |
| 15 | 7,787 | 99 | 37.98% | 61 | 136 |
| 18 | 180,034 | 2,279 | 13.25% | 1,977 | 2,581 |
| 22 | 18,259 | 231 | 41.52% | 135 | 327 |
| 23 | 30,703 | 389 | 43.53% | 219 | 558 |
| 28 | 26,891 | 340 | 67.02% | 112 | 569 |
| 33 | 76,521 | 969 | 17.74% | 797 | 1,140 |
| 34 | 18,041 | 228 | 49.13% | 116 | 341 |
| 38 | 3,074 | 39 | 77.74% | 9 | 69 |
| 42 | 8,891 | 113 | 66.25% | 38 | 187 |
| 53 | 26,840 | 340 | 29.11% | 241 | 439 |
| TOTAL: | 397,041 | 5,026 | | 3,705 | 6,346 |

VDU TO PAYMENT UNIT

When a VDU is associated with more than one Payment Unit (PU), the VDU volumes are assigned to the PU based on acres of the VDU within the PU.

| VDU | VDU ACRES | PU | PU ACRES |
|--------|-----------|----|----------|
| | | | |
| TOTAL: | | | |

DESCRIPTION OF TIMBER BY PU (PU)

| PU | MARKET GROUP | PRODUCT | QUANTITY | UNIT | ACRES | ADVERTISE PRICE |
|----|---------------------|-----------|----------|-------|-------|-----------------|
| 1 | Basswood | Sawtimber | 20.6 | MBF | 49.1 | \$16,812.10 |
| | Red Maple | | 0.5 | MBF | | |
| | Sugar Maple | | 51.9 | MBF | | |
| | Balsam Fir | Pulpwood | 2 | Cords | | |
| | Basswood | | 33 | Cords | | |
| | Red Maple | | 9 | Cords | | |
| | Sugar Maple | | 347 | Cords | | |
| | | | | | | |
| 2 | Basswood | Sawtimber | 16.4 | MBF | 39.0 | \$13,375.80 |
| | Red Maple | | 0.4 | MBF | | |
| | Sugar Maple | | 41.3 | MBF | | |
| | Balsam Fir | Pulpwood | 1 | Cords | | |
| | Basswood | | 26 | Cords | | |
| | Red Maple | | 7 | Cords | | |
| | Sugar Maple | | 277 | Cords | | |
| | | | | | | |
| 3 | Red Maple | Sawtimber | 0.4 | MBF | 20.7 | \$4,242.30 |
| | Sugar Maple | | 8.3 | MBF | | |
| | Balsam Fir | Pulpwood | 4 | Cords | | |
| | Mixed Spruce | | 7 | Cords | | |
| | <i>White Spruce</i> | | 7 | Cords | | |
| | Red Maple | | 43 | Cords | | |
| | Sugar Maple | | 157 | Cords | | |
| | | | | | | |
| 4 | Basswood | Sawtimber | 17.3 | MBF | 41.2 | \$14,119.05 |
| | Red Maple | | 0.4 | MBF | | |
| | Sugar Maple | | 43.6 | MBF | | |
| | Balsam Fir | Pulpwood | 1 | Cords | | |
| | Basswood | | 28 | Cords | | |
| | Red Maple | | 7 | Cords | | |
| | Sugar Maple | | 292 | Cords | | |
| | | | | | | |
| 5 | Basswood | Sawtimber | 14.2 | MBF | 33.7 | \$11,566.15 |
| | Red Maple | | 0.3 | MBF | | |
| | Sugar Maple | | 35.7 | MBF | | |
| | Balsam Fir | Pulpwood | 1 | Cords | | |
| | Basswood | | 23 | Cords | | |
| | Red Maple | | 6 | Cords | | |
| | Sugar Maple | | 239 | Cords | | |
| | | | | | | |
| 6 | Basswood | Sawtimber | 15.1 | MBF | 35.8 | \$12,268.00 |
| | Red Maple | | 0.3 | MBF | | |
| | Sugar Maple | | 37.9 | MBF | | |
| | Balsam Fir | Pulpwood | 1 | Cords | | |
| | Basswood | | 24 | Cords | | |
| | Red Maple | | 6 | Cords | | |
| | Sugar Maple | | 254 | Cords | | |
| | | | | | | |
| 7 | Basswood | Sawtimber | 8.7 | MBF | 24.0 | \$7,604.40 |
| | Sugar Maple | | 21.0 | MBF | | |
| | Basswood | Pulpwood | 39 | Cords | | |
| | Mixed Spruce | | 1 | Cords | | |
| | <i>White Spruce</i> | | 1 | Cords | | |
| | Red Maple | | 3 | Cords | | |
| | Sugar Maple | | 161 | Cords | | |
| | | | | | | |
| 8 | Basswood | Sawtimber | 7.5 | MBF | 20.9 | \$6,624.05 |
| | Sugar Maple | | 18.3 | MBF | | |
| | Basswood | Pulpwood | 34 | Cords | | |
| | Mixed Spruce | | 1 | Cords | | |
| | <i>White Spruce</i> | | 1 | Cords | | |
| | Red Maple | | 3 | Cords | | |
| | | | | | | |

DESCRIPTION OF TIMBER BY PU (PU), CON'T

| PU | MARKET GROUP | PRODUCT | QUANTITY | UNIT | ACRES | ADVERTISE PRICE |
|---------|---------------------|-----------|----------|--------------|-------|-----------------|
| 8 con't | Sugar Maple | Pulpwood | 140 | Cords | | |
| 9 | Basswood | Sawtimber | 9.2 | MBF | 18.1 | \$5,425.60 |
| | Red Maple | | 0.2 | MBF | | |
| | Sugar Maple | | 16.5 | MBF | | |
| | Basswood | Pulpwood | 26 | Cords | | |
| | Sugar Maple | | 78 | Cords | | |
| 10 | Basswood | Sawtimber | 14.4 | MBF | 40.0 | \$12,722.20 |
| | Sugar Maple | | 35.0 | MBF | | |
| | Basswood | Pulpwood | 67 | Cords | | |
| | Mixed Spruce | | 2 | Cords | | |
| | <i>White Spruce</i> | | 2 | <i>Cords</i> | | |
| | Red Maple | | 6 | Cords | | |
| | Sugar Maple | | 268 | Cords | | |
| | | | | | | |
| 11 | Basswood | Sawtimber | 9.6 | MBF | 19.0 | \$5,714.60 |
| | Red Maple | | 0.2 | MBF | | |
| | Sugar Maple | | 17.3 | MBF | | |
| | Basswood | Pulpwood | 28 | Cords | | |
| | Mixed Spruce | | 1 | Cords | | |
| | <i>White Spruce</i> | | 1 | <i>Cords</i> | | |
| | Red Maple | | 1 | Cords | | |
| | Sugar Maple | | 81 | Cords | | |
| 12 | Balsam Fir | Pulpwood | 31 | Cords | 11.8 | \$3,241.80 |
| | Balsam Poplar | | 32 | Cords | | |
| | Mixed Hardwood | | 9 | Cords | | |
| | <i>Paper Birch</i> | | 9 | <i>Cords</i> | | |
| | Mixed Spruce | | 18 | Cords | | |
| | <i>White Spruce</i> | | 18 | <i>Cords</i> | | |
| | Quaking Aspen | | 64 | Cords | | |
| | Red Maple | | 10 | Cords | | |
| | Sugar Maple | | 22 | Cords | | |
| | Tamarack | | 1 | Cords | | |
| | | | | | | |
| 13 | Balsam Fir | Pulpwood | 28 | Cords | 13.8 | \$8,073.10 |
| | Balsam Poplar | | 14 | Cords | | |
| | Mixed Hardwood | | 22 | Cords | | |
| | <i>Green Ash</i> | | 20 | <i>Cords</i> | | |
| | <i>Paper Birch</i> | | 2 | <i>Cords</i> | | |
| | Mixed Spruce | | 44 | Cords | | |
| | <i>White Spruce</i> | | 44 | <i>Cords</i> | | |
| | Quaking Aspen | | 268 | Cords | | |
| | Red Maple | | 2 | Cords | | |
| | Sugar Maple | | 42 | Cords | | |
| | Tamarack | | 2 | Cords | | |
| | | | | | | |
| 14 | Basswood | Sawtimber | 0.2 | MBF | 5.9 | \$956.55 |
| | Balsam Fir | Pulpwood | 8 | Cords | | |
| | Basswood | | 2 | Cords | | |
| | Mixed Hardwood | | 4 | Cords | | |
| | <i>Paper Birch</i> | | 1 | <i>Cords</i> | | |
| | <i>Yellow Birch</i> | | 3 | <i>Cords</i> | | |
| | Mixed Spruce | | 10 | Cords | | |
| | <i>Black Spruce</i> | | 4 | <i>Cords</i> | | |
| | <i>White Spruce</i> | | 6 | <i>Cords</i> | | |
| | Quaking Aspen | | 28 | Cords | | |
| | Sugar Maple | | 1 | Cords | | |
| | | | | | | |
| 15 | Basswood | Sawtimber | 0.2 | MBF | 6.6 | \$1,070.80 |
| | Balsam Fir | Pulpwood | 10 | Cords | | |

DESCRIPTION OF TIMBER BY PU (PU), CON'T

| PU | MARKET GROUP | PRODUCT | QUANTITY | UNIT | ACRES | ADVERTISE PRICE |
|---------------------|---------------------|----------|--------------|--------------|-------|-----------------|
| 15 con't | Basswood | Pulpwood | 2 | Cords | | |
| | Mixed Hardwood | | 6 | Cords | | |
| | <i>Paper Birch</i> | | 2 | <i>Cords</i> | | |
| | <i>Yellow Birch</i> | | 4 | <i>Cords</i> | | |
| | Mixed Spruce | | 10 | Cords | | |
| | <i>Black Spruce</i> | | 4 | <i>Cords</i> | | |
| | <i>White Spruce</i> | | 6 | <i>Cords</i> | | |
| | Quaking Aspen | | 31 | Cords | | |
| | Sugar Maple | | 1 | Cords | | |
| 16 | Balsam Fir | Pulpwood | 6 | Cords | 12.0 | \$1,321.30 |
| | Balsam Poplar | | 10 | Cords | | |
| | Mixed Hardwood | | 48 | Cords | | |
| | <i>Paper Birch</i> | | 10 | <i>Cords</i> | | |
| | <i>Yellow Birch</i> | | 38 | <i>Cords</i> | | |
| | Mixed Spruce | | 14 | Cords | | |
| | <i>White Spruce</i> | | 14 | <i>Cords</i> | | |
| | Quaking Aspen | | 4 | Cords | | |
| | Red Maple | | 10 | Cords | | |
| | Sugar Maple | | 6 | Cords | | |
| | 17 | | Mixed Spruce | Pulpwood | | |
| <i>Black Spruce</i> | | 297 | <i>Cords</i> | | | |
| Tamarack | | 91 | Cords | | | |
| TOTAL: | | | 462.9 | MBF | | |
| TOTAL: | | | 3,943 | Cords | | |

Sale Specific Conditions & Requirements

Sale Name: Ross's Maple Split

Sale Number: 32-014-25 Seq#: 1

1 - Sale Area

1.2 - Boundaries

1.2.1 - Painted Boundaries (9/19)

The sale boundary and Payment Unit boundaries are marked and identified by blue, red and yellow paint. Exterior sale boundary lines against private property are marked with blue paint. Exterior sale boundary lines against state are marked with red paint. Interior Payment Unit boundaries are marked with yellow paint. The painted boundary line trees are not Included Timber and are to be protected unless marked with orange paint. Yellow painted trees designating an interior Payment Unit boundary are only to be cut when all surrounding Payment Units have been paid.

2 - Timber Specifications

2.1 - Included Timber

2.1.1 - Clearcut Unit(s) with Unmerchantable Trees (6/14)

Within Payment Unit(s) 12-15 & 17, cut all trees that are two (2) inches or more at DBH, except do not cut American elm, cedar, hemlock, or pine (see spec 2.1.11).

Within Payment Unit(s) 16, cut all trees that are two (2) inches or more at DBH, except do not cut American elm, cedar, hemlock, pine, or trees marked with green paint above and below stump height.

2.1.3 - Cut Tree Marked Unit(s) (12/08)

Within Payment Unit(s) 1-11, all trees are designated for cutting when marked with orange paint above and below stump height, regardless of merchantability. Additionally, cut all spruce and fir which meet minimum piece specifications in 2.2 Utilization.

2.1.11 - Description of Timber Note (2/04)

Note that Payment Unit 17 is an optional Payment Unit. Removing this Payment Unit from the sale is a contract modification which requires a Timber Sale Contract Amendment.

3 - Payments

3.4 - Damaged Timber

3.4.1 - Damaged Timber (12/24)

General Condition and Requirement 3.4 Damaged Timber, defines liquidated damages for undesignated live merchantable trees which are cut or injured.

No damage is acceptable to undesignated live merchantable trees. Within the Sale Area, if more than 10% of trees (> 4.5" DBH) within a specified area of the sale are damaged, liquidated damages will be assessed for all trees damaged. Rates will be in accordance with General Condition and Requirement 3.4 Damaged Timber.

4 - Transportation

4.1 - Construction

4.1.1 - Stream Crossings, General (1/25)

All stream crossing structures will be temporary and, therefore, shall be provided by the Purchaser and must be removed upon completion of the sale. All permits for stream crossings will be provided by the DNR for crossings on State owned land.

4.1.3 - Slash and Earthen Piles (8/04)

Piles or windrows of earth along roads and landings that have been widened or constructed shall be leveled. Slash from road maintenance or construction, including stumps, shall be dispersed throughout the sale.

4.1.4 - Timber Removed for Construction (3/23)

Trees cut or damaged in the process of pre-approved road, landing, or skid trail construction will be decked in an area separate from other Designated Timber and not removed until measured by the Sale Administrator. Payment will be made at contract prices or average prices, if not on the contract.

4.1.6 - Road Construction (4/24)

Construction of new roads or improvements of existing roads shall be done in such a way as to minimize the environmental and visual impacts. Merchantable trees shall be cut and utilized unless otherwise directed. Non-merchantable trees shall be severed and laid flat on the ground. Slash shall be scattered, and not left in windrows and kept a minimum of 10 feet back from the road edge. Stumps shall be set upright, not left on edge, and be moved at least 10 feet away from the road edge. Disturbed soil shall be feathered into the woods and not left in berms or windrows.

4.1.7 - Road Closure (10/11)

All new roads built into the sale must be blocked to vehicle traffic upon completion of the sale. Overgrown roads that are reopened shall be considered new roads. In general, this will require constructing a four (4') foot high berm of stumps and logs covered with earth. Contact the Sale Administrator for specific details of design and placement.

Note that: an existing road which accesses Payment Units 10, 13, and 14 will need to be closed, see the Timber Sale Map for location.

4.2 - Maintenance

4.2.1 - Hauling Restriction (12/08)

Hauling may be restricted on forest roads by the Unit Manager or his/her representative. The restriction may occur during wet weather conditions.

4.2.3 - Road maintenance (8/13)

The following road maintenance may be needed: Within 60 days of completion of hauling, or if no hauling occurs for 60 days, the road must be maintained and graded. This includes cleaning of drainage areas, grading, crowning and filling with gravel, if necessary. Damages will be assessed if grading/repair does not occur.

4.4 - Access

4.4.1 - Private property access (3/11)

Permission for access across private land is the responsibility of the Purchaser. Should the Purchaser desire to cross private land, a copy of the written permission from the private land-owner may be required by the DNR.

5 - Operations

5.1 - Notification

5.1.1 - Pre-sale Conference (10/16)

A pre-sale conference on site between the Purchaser and Sale Administrator is required prior to beginning any operations. The Unit Manager or his/her representative must be contacted at least 5 days in advance to schedule the conference.

5.2 - Conduct of Operations

5.2.1 - Slash

5.2.1.11 - Slash for Reforestation (3/21)

To facilitate reforestation, the Sale Area shall be left with slash evenly distributed. Bunched tops within the cutting area shall be broken up and scattered. Stumps shall be cut low to the ground. Processing sites shall not be left with a compacted layer of slash; tops from these sites shall be hauled back into the cut area and scattered.

5.2.2 - Hazard Trees/Snags

5.2.2.1 - Den Trees (10/16)

Obvious hollow and/or den trees shall be protected and left standing unless they are a safety hazard.

5.2.3 - Operating Restrictions

5.2.3.1 - Operating Restrictions (9/11)

Within Payment Unit(s) 1-10, 13, 15, and 17, unless changed by written agreement, cutting and skidding are limited to period of December 1 to April 1. This restriction is because of deer wintering complex.

Additionally, within Payment Units 12 and 14-17, unless changed by written agreement, cutting and skidding are limited to the period of December 1 to April 1. This restriction is because of low wet ground.

5.2.3.3 - Bark Slippage Restriction (3/09)

Within Payment Unit(s) 1-11, unless changed by written agreement, cutting and skidding are not permitted during the period of April 15 to July 15. This restriction is because of bark slippage.

5.2.17 - Timber Mats and Interlocking Composite Mats (5/23)

Some roads or skid trails may require extra protection such as that afforded by timber mats, interlocking composite mats, or another approved system. If available, mats may be borrowed from the DNR. A Timber Sale Contract Amendment will be used to document the Purchaser's use of the DNR's mats. Contact the Sale Administrator regarding availability and pick-up. Timber mats are available from various field offices. Composite mats are only available from the Grayling field office and the Marquette ICC. The Purchaser is responsible for picking up and hauling the mats to and from the site. The composite mats will require DNR staff onsite for installation and removal. Contact the Sale Administrator to schedule at least 30 days before desired install/removal date. All mats must be cleaned prior to drop off. This may include, but is not limited to, power washing and brushing to remove mud and debris. A charge of \$700.00 per timber mat and \$2,000.00 per composite mat will be assessed for all damaged or non-returned mats. Damage for the crane/timber mats is defined as three or more broken cants. Damage for the composite mats is defined as cracked or broken mats.

5.2.32 - Decking/Landing Restoration (9/13)

All decking and landing areas must have the surface area restored to a condition equal to or better than before. This is to ensure the proper regeneration of the stand. Wood debris, chips and "cookies" from trimmings must be removed or scattered away from landing and loading areas and may not be windrowed on the edge.

5.2.38 - No Decking Against Live Trees (2/04)

Cut products may not be decked against unmarked or designated leave trees.

5.4 - Soil Protection

5.4.1 - Rutting Restriction, General (7/16)

Operations are to cease immediately if equipment and weather conditions result in rutting of roads and/or skid trails which is 12 inches or greater in depth and 50 feet in length. The Unit Manager or his/her representative may restrict hauling and/or skidding if ruts exceed the specified depth. With the Unit Manager or his/her representative's approval, the Purchaser may return to the area when the risk of rutting has decreased.

5.4.2 - Skid Trails (2/04)

Skid trails up and down slopes should be avoided. If, however, this is unavoidable, these trails will be left in a non-erodible condition using water bars, logs, and slash. Placing of slash on these skid trails while logging is ongoing may alleviate need for any further action. At the direction of the Sale Administrator, seed, fertilizer, and mulch may also be required.

5.8 - Protection of Endangered Species

5.8.5 - Protection of Raptor Nests (3/13)

All trees with raptor nests will be protected if found during harvesting operations. Notification will be made to the Unit Manager or his/her representative who will notify the Wildlife Biologist so an onsite evaluation and recommendation can be made, if necessary.

6 - Safety and Fire Prevention

6.2 - Signing

6.2.1 - Road Posting (10/20)

The Purchaser is responsible for posting and maintaining caution signs on Ross Grade and County Rd SH prior to beginning operations. The road must be posted at appropriate distances from the Sale Area to warn of logging activity and truck traffic. Signs must be removed when harvest operations are suspended or completed. The Purchaser will provide these signs.

7 - Other Conditions

7.5 - Loss

7.5.1 - Deteriorating Timber (7/09)

The Sale Area has received damage from spruce budworm and emerald ash borer. The Purchaser should harvest the wood as soon as possible. The Department of Natural Resources is held free of responsibility of any further damage or deterioration due to delay in harvesting.

**TIMBER SALE MAP**

This information provided by authority of Part 525, 1994 PA 451, as amended.

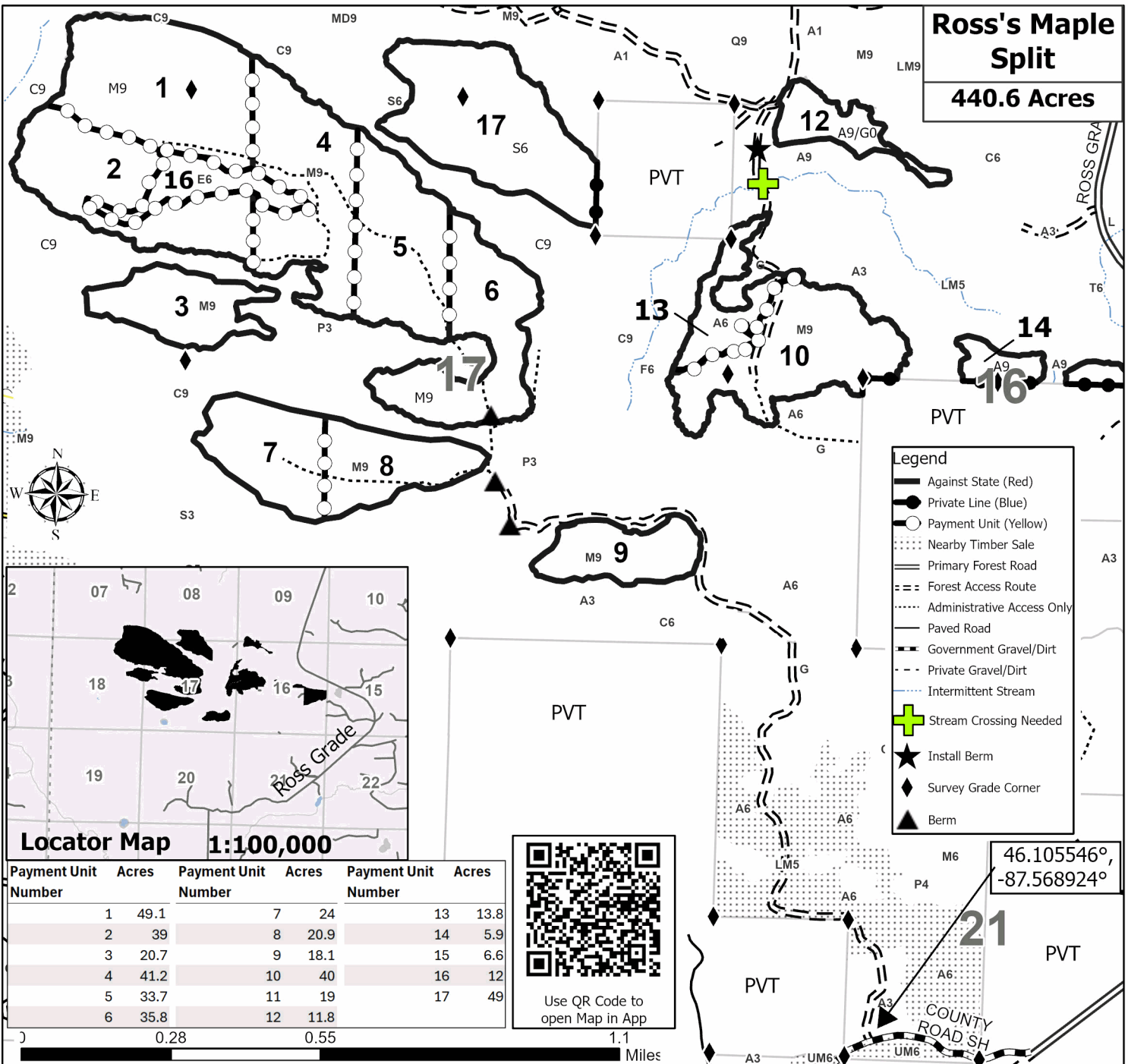
| | | | | | | |
|------------------------|--------------|----------------------------------|--|-------------------|-----------|---------|
| Forest Management Unit | | County | Mapped By: Fischer | Scale 1:17,000 | Page 1 | Of 2 |
| Gwynn Mgt Unit | | Marquette | Cruised By: Fischer, Gould, Siler | | | |
| Township 43N | Range 26W | Section(s) and Subdivision(s) | SESE; Sec. 8 S1/2SW,SWSE; Sec. 9 SWSW; Sec. 16 NW,S1/2NE,NWSW,NESE; Sec. 17 NW,NWNE,S1/2NE,SW,SE; Sec. 18 N1/2NE,SENE; Sec. 7 | | | |

Cover Type

| | | | |
|---------------------|-------------------------|-------------------------|------------------------|
| A = Aspen | J = Jack Pine | O = Oak | U = Upland Brush |
| B = Paper Birch | K = Rock | P = Lowland Poplar | UM = Upland Mix Forest |
| C = Cedar | L = Lowland Brush | Q = Mixed Swamp Conifer | V = Bog or Marsh |
| D = Treed Bog | LM = Lowland Mix Forest | R = Red Pine | W = White Pine |
| E = Swamp Hardwoods | M = Maple, Beech, Birch | S = Black Spruce | X = Non Stocked |
| F = Spruce/Fir | MC = Mixed Conifer | T = Tamarack | Y = Sand |
| G = Grass | MD = Mixed Deciduous | | Z = Water |
| H = Hemlock | N = Marsh | | |

Density

| | |
|-----------------------------|------------------------|
| 0 = Non Stocked | 5 = Pole Timber Medium |
| 1 = Seedling Sapling Poor | 6 = Pole Timber Well |
| 2 = Seedling Sapling Medium | 7 = Saw Timber Poor |
| 3 = Seedling Sapling Well | 8 = Saw Timber Medium |
| 4 = Pole Timber Poor | 9 = Saw Timber Well |

Compartment 32062**Ross's Maple Split****440.6 Acres**

**TIMBER SALE MAP**

This information provided by authority of Part 525, 1994 PA 451, as amended.

Sale Number
32-014-25Date
08/29/2025

Forest Management Unit

County

Mapped By: Fischer

Scale

Page

Of

Gwynn Mgt Unit

Marquette

Cruised By: Fischer, Gould, Siler

1:14,000

2

2

Township
43NRange
26WSection(s) and SESE; Sec. 8 S1/2SW,SWSE; Sec. 9 SWSW;
Subdivision(s) Sec. 16 NW,S1/2NE,NWSW,NESE; Sec. 17 NW,NWNE,S1/2NE,SW,SE; Sec. 18 N1/2NE,SENE; Sec. 7**Cover Type**

| | | | |
|---------------------|-------------------------|-------------------------|------------------------|
| A = Aspen | J = Jack Pine | O = Oak | U = Upland Brush |
| B = Paper Birch | K = Rock | P = Lowland Poplar | UM = Upland Mix Forest |
| C = Cedar | L = Lowland Brush | Q = Mixed Swamp Conifer | V = Bog or Marsh |
| D = Treed Bog | LM = Lowland Mix Forest | R = Red Pine | W = White Pine |
| E = Swamp Hardwoods | M = Maple, Beech, Birch | S = Black Spruce | X = Non Stocked |
| F = Spruce/Fir | MC = Mixed Conifer | T = Tamarack | Y = Sand |
| G = Grass | MD = Mixed Deciduous | | Z = Water |
| H = Hemlock | N = Marsh | | |

Density

| | |
|-----------------------------|------------------------|
| 0 = Non Stocked | 5 = Pole Timber Medium |
| 1 = Seedling Sapling Poor | 6 = Pole Timber Well |
| 2 = Seedling Sapling Medium | 7 = Saw Timber Poor |
| 3 = Seedling Sapling Well | 8 = Saw Timber Medium |
| 4 = Pole Timber Poor | 9 = Saw Timber Well |

Compartment 32062