



**DEPARTMENT OF NATURAL RESOURCES
STATE OF MICHIGAN
TIMBER SALE PROSPECTUS #7626**

SCHEDULED SALE DATE AND TIME: 2:00 p.m. (local time) on August 18, 2025.

LOCATION: GWINN MGMT UNIT, 410 WEST M 35, GWINN, MI 49841.

CONTACT NAME: Mike Brodeur

PHONE NUMBER: (906) 346-9201

PROSPECTUS NOTE: The bidder is advised to inspect the sale area and review the location, estimated volumes, operating costs and contract terms of proposed sales. Please be aware that some landowners may request 60 days or more notice for access across their land.

Notice is hereby given that bids will be received by the Unit Manager, GWINN MANAGEMENT UNIT, for certain timber on the following described lands:

565 Crooked Chains (32-012-25) / T45N, R26W, SEC. 16, NWNW,S1/2NW,SWNE,N1/2SW,SESW.

T45N, R26W, SEC. 16, SE.

T45N, R26W, SEC. 21, NENW,NWNE.

T45N, R26W, SEC. 9 , E1/2NW,S1/2NE,NESW,N1/2SE.

Marquette County, Advertised Price \$167,685.90, 214.6 Acres, Aspen, Red Pine.

SALE NOTE: This sale has operation restriction specs due to bark slippage and oak wilt. The Bass Lake motorcycle trail runs through a portion of this sale.

A recreation site such as a trail, pathway, or campground is within the sale area or the vicinity.
Certain restrictions/specifications may be applicable including time restrictions.

TIMBER SALE INFORMATION

565 Crooked Chains (32-012-25)

T45N, R26W, SEC. 16; T45N, R26W, SEC. 21; T45N, R26W, SEC. 9.

Marquette County (Advertised Price \$167,685.90)

SALE NOTE: This sale has operation restriction specs due to bark slippage and oak wilt. The Bass Lake motorcycle trail runs through a portion of this sale.

A recreation site such as a trail, pathway, or campground is within the sale area or the vicinity. Certain restrictions/specifications may be applicable including time restrictions.

A timber sale contract for this lump sum, sealed bid timber sale will be awarded to the responsible bidder offering the highest sealed bid price. All units of volume listed below were estimated using the Inventory Manager computer program and the new Michigan taper model. Bids must be at or above the following advertised price for each product and species:

<u>PRODUCTS & SPECIES</u>	<u>ESTIMATED UNITS*</u>	<u>ADVERTISED PRICE</u>
Sawtimber		
Paper Birch	0.4 MBF	\$ 86.00 / MBF
Red Oak	31.8 MBF	\$ 150.00 / MBF
Pulpwood		
Balsam Fir	1 Cords	\$ 8.60 / Cord
Jack Pine	129 Cords	\$ 29.80 / Cord
Mixed Aspen	534 Cords	\$ 22.95 / Cord
Mixed Hardwood	175 Cords	\$ 9.85 / Cord
Mixed Spruce	103 Cords	\$ 8.65 / Cord
Red Oak	130 Cords	\$ 15.30 / Cord
Red Pine	2,866 Cords	\$ 49.15 / Cord
Tamarack	28 Cords	\$ 11.70 / Cord
White Pine	67 Cords	\$ 14.60 / Cord

* The total volume is statistically estimated within plus (+) or minus (-) 9.86 percent. There are an estimated 4,103 cords on this timber sale, plus or minus 405 cords at the 95% confidence level. The estimated units are final and not subject to adjustment. Prospective bidders are urged to examine this timber and to make their own estimates of quantity and quality.

BOND AND PAYMENT SCHEDULE:

1. A bond in the amount of \$8,384.30 to insure faithful performance of the conditions of the contract will be deposited by the successful bidder within 21 days of the sale award.
2. Cutting in any sale or unit without the required advance payment would be considered a trespass.
3. Total payment must be paid in advance or according to the following schedule :
 - (a) Ten percent (10%) of the sale value must be paid within 21 days of the sale award.
 - (b) The 10% down payment will be credited towards the first unit cut.
 - (c) Payment for each of the following units must be made before cutting begins in that unit:

<u>PAYMENT UNIT NUMBER</u>	<u>PERCENT OF TOTAL SALE VALUE</u>
01	15.6%
02	21.3%
03	9.8%
04	15.0%
05	11.6%
06	12.2%
07	3.3%
08	2.2%
09	0.6%
10	1.3%
11	5.0%
12	0.7%
13	1.4%

4. If no cutting takes place, the 10% down payment will not be refunded.
5. Operations on the contract issued will terminate on 06/30/2029.

SALE STATISTICS

Volumes were calculated in cubic feet using the Michigan taper model. Cubic foot volume includes all wood inside bark for the product indicated. For display purposes, cubic feet were converted to cords and MBF using a simple conversion factor, e.g. 79 cubic feet per cord and 185 cubic feet per MBF. The cubic foot volumes are precise; the cords and MBF volumes are not. Cubic foot volume cannot be directly converted to cords or boards with precision.

SALE VOLUMES

The total estimated sale volume may not equal the sum of the species/products due to the nature of statistical calculations associated with double sampling methodology.

VOLUME			STATISTICAL RANGE IN CORDS	
TOTAL CUBIC FEET	TOTAL CORDS	PERCENT ERROR	MINIMUM	MAXIMUM
324,103	4,103	9.86%	3,698	4,507

VDU VOLUMES

A VDU is a Volume Determination Unit. Volumes and their associated statistics are calculated at the VDU level and summarized to the sale level. There is often a one to one relationship between a VDU and a Payment Unit, but not always, depending on the cruise design. Refer to the VDU TO PAYMENT UNIT table.

	VOLUME			RANGE IN CORDS	
VDU	TOTAL CUBIC FEET	TOTAL CORDS	PERCENT ERROR	MINIMUM	MAXIMUM
37	9,736	123	52.71%	58	188
39	12,599	159	51.00%	78	241
49	13,759	174	59.29%	71	277
50	29,605	375	48.20%	194	555
51	69,848	884	16.33%	740	1,029
61	16,364	207	38.79%	127	287
65	163,793	2,073	14.10%	1,781	2,366
81	8,400	106	38.79%	65	148
TOTAL:	324,103	4,103		3,114	5,091

VDU TO PAYMENT UNIT

When a VDU is associated with more than one Payment Unit (PU), the VDU volumes are assigned to the PU based on acres of the VDU within the PU.

VDU	VDU ACRES	PU	PU ACRES
37	4.3	12	4.3
39	11.9	9	4.1
		10	7.8
49	10.9	7	10.9
50	18.1	11	18.1
51	44.6	3	17.6
		4	27.0
61	15.5	8	15.5
65	104.8	1	26.9
		2	36.8
		5	20.0
		6	21.1
81	4.5	13	4.5
TOTAL:	214.6		214.6

DESCRIPTION OF TIMBER BY PU (PU)

PU	MARKET GROUP	PRODUCT	QUANTITY	UNIT	ACRES	ADVERTISE PRICE
1	Mixed Hardwood	Pulpwood	1	Cords	26.9	\$26,117.15
	<i>Red Maple</i>		1	<i>Cords</i>		
	Mixed Spruce		1	Cords		
	<i>White Spruce</i>		1	<i>Cords</i>		
	Red Pine		531	Cords		
2	Mixed Hardwood	Pulpwood	1	Cords	36.8	\$35,701.40
	<i>Red Maple</i>		1	<i>Cords</i>		
	Mixed Spruce		1	Cords		
	<i>White Spruce</i>		1	<i>Cords</i>		
	Red Pine		726	Cords		
3	Jack Pine	Pulpwood	17	Cords	17.6	\$16,424.90
	Mixed Aspen		19	Cords		
	<i>Quaking Aspen</i>		19	<i>Cords</i>		
	Red Pine		315	Cords		
4	Jack Pine	Pulpwood	27	Cords	27.0	\$25,209.60
	Mixed Aspen		29	Cords		
	<i>Quaking Aspen</i>		29	<i>Cords</i>		
	Red Pine		483	Cords		
5	Mixed Hardwood	Pulpwood	1	Cords	20.0	\$19,424.10
	<i>Red Maple</i>		1	<i>Cords</i>		
	Red Pine		395	Cords		
6	Mixed Hardwood	Pulpwood	1	Cords	21.1	\$20,456.25
	<i>Red Maple</i>		1	<i>Cords</i>		
	Red Pine		416	Cords		
7	Red Oak	Sawtimber	26.2	MBF	10.9	\$5,609.85
	Mixed Hardwood	Pulpwood	9	Cords		
	<i>Red Maple</i>		9	<i>Cords</i>		
	Red Oak		104	Cords		
8	Paper Birch	Sawtimber	0.4	MBF	15.5	\$3,623.35
	Red Oak		5.6	MBF		
	Balsam Fir	Pulpwood	1	Cords		
	Mixed Aspen		33	Cords		
	<i>Quaking Aspen</i>		33	<i>Cords</i>		
	Mixed Hardwood		72	Cords		
	<i>Paper Birch</i>		7	<i>Cords</i>		
	<i>Red Maple</i>		65	<i>Cords</i>		
	Red Oak		26	Cords		
	White Pine		60	Cords		
9	Jack Pine	Pulpwood	11	Cords	4.1	\$1,078.85
	Mixed Aspen		25	Cords		
	<i>Quaking Aspen</i>		25	<i>Cords</i>		
	Mixed Hardwood		18	Cords		
	<i>Paper Birch</i>		4	<i>Cords</i>		
	<i>Red Maple</i>		14	<i>Cords</i>		
10	Jack Pine	Pulpwood	22	Cords	7.8	\$2,124.90
	Mixed Aspen		49	Cords		
	<i>Quaking Aspen</i>		49	<i>Cords</i>		
	Mixed Hardwood		35	Cords		
	<i>Paper Birch</i>		7	<i>Cords</i>		
	<i>Red Maple</i>		28	<i>Cords</i>		
11	Mixed Aspen	Pulpwood	357	Cords	18.1	\$8,377.90
	<i>B. T. Aspen</i>		79	<i>Cords</i>		
	<i>Quaking Aspen</i>		278	<i>Cords</i>		
	Mixed Hardwood		17	Cords		

DESCRIPTION OF TIMBER BY PU (PU), CON'T

PU	MARKET GROUP	PRODUCT	QUANTITY	UNIT	ACRES	ADVERTISE PRICE
11 con't	<i>Red Maple</i>	<i>Pulpwood</i>	17	<i>Cords</i>		
	Mixed Spruce		2	Cords		
	<i>White Spruce</i>		2	<i>Cords</i>		
12	Jack Pine	Pulpwood	5	Cords	4.3	\$1,245.30
	Mixed Hardwood		2	Cords		
	<i>Red Maple</i>		2	<i>Cords</i>		
	Mixed Spruce		92	Cords		
	<i>Black Spruce</i>		92	<i>Cords</i>		
	Tamarack		24	Cords		
13	Jack Pine	Pulpwood	47	Cords	4.5	\$2,292.35
	Mixed Aspen		22	Cords		
	<i>Quaking Aspen</i>		22	<i>Cords</i>		
	Mixed Hardwood		18	Cords		
	<i>Paper Birch</i>		8	<i>Cords</i>		
	<i>Red Maple</i>		10	<i>Cords</i>		
	Mixed Spruce		7	Cords		
	<i>Black Spruce</i>		3	<i>Cords</i>		
	<i>White Spruce</i>		4	<i>Cords</i>		
	Tamarack		4	Cords		
	White Pine		7	Cords		
TOTAL:			32.2	MBF		
TOTAL:			4,033	Cords		

Sale Specific Conditions & Requirements

Sale Name: 565 Crooked Chains

Sale Number: 32-012-25 Seq#: 1

1 - Sale Area

1.2 - Boundaries

1.2.1 - Painted Boundaries (9/19)

The sale boundary and Payment Unit boundaries are marked and identified by blue, red, and yellow paint, or are unpainted and designated by roads. Exterior sale boundary lines against private property are marked with blue paint. Exterior sale boundary lines against state are marked with red paint, except for the boundaries of Payment Units 3, 4, 11 against Chain Lake Trail, Payment Units 6 and 8 against Crooked Lake Road, and Payment Unit 10 against County Road 565. Interior Payment Unit boundaries are marked with yellow paint, except for the boundaries of Payment Units 1 and 2 against County Road 565 and Payment Units 4 and 11 against Chain Lake Trail. Retention patches are marked with red paint; no harvesting activities may occur within these areas. The painted boundary line trees are not Included Timber and are to be protected unless marked with orange paint. Yellow painted trees designating an interior Payment Unit boundary are only to be cut when all surrounding Payment Units have been paid.

2 - Timber Specifications

2.1 - Included Timber

2.1.1 - Clearcut Unit(s) with Unmerchantable Trees (6/14)

Within Payment Unit(s) 9 and 10, cut all trees that are two (2) inches or more at DBH, except do not cut oak, white pine, red pine, or cedar.

Within Payment Unit 11, cut all trees that are two (2) inches or more at DBH, except do not cut oak, white pine, or cherry.

Within Payment Unit 12, cut all trees that are two (2) inches or more at DBH, except do not cut oak, white pine, or cedar.

2.1.3 - Cut Tree Marked Unit(s) (12/08)

Within Payment Unit(s) 1-8, all trees are designated for cutting when marked with orange paint above and below stump height, regardless of merchantability.

In addition:

Within Payment Units 3 and 4, cut all jack pine, red maple, and aspen, which meet minimum piece specifications in 2.2 utilization.

Within Payment Unit 8, cut all aspen, maple, fir, and spruce which meet minimum piece specifications in 2.2 utilization.

2.1.7 - Leave Tree Marked Unit(s) (6/14)

Within Payment Unit(s) 13, cut all trees that are two (2) inches or more at DBH, except do not cut cedar, oak, red pine, or trees marked with green paint above and below stump height.

3 - Payments

3.3 - Pre-measured Sales

3.3.4 - Dividing Payment Units (7/14)

Payment Unit(s) valued at \$20,000, or more, may be divided at the request of the Purchaser and upon approval of the Unit Manager. Dividing Payment Units is a contract modification which requires a Timber Sale Contract Amendment. There will be only one division per Payment Unit.

3.4 - Damaged Timber

3.4.1 - Damaged Timber (12/24)

General Condition and Requirement 3.4 Damaged Timber, defines liquidated damages for undesignated live merchantable trees which are cut or injured. In addition, extreme care should be taken to avoid damage to tree seedlings and saplings. No damage is acceptable to undesignated live merchantable trees. Within the Sale Area, if more than 5% of trees (> 4.5" DBH) within a specified area of the sale are damaged, liquidated damages will be assessed for all trees damaged. Rates will be in accordance with General Condition and Requirement 3.4 Damaged Timber.

4 - Transportation

4.1 - Construction

4.1.4 - Timber Removed for Construction (3/23)

Trees cut or damaged in the process of pre-approved road, landing, or skid trail construction will be decked in an area separate from other Designated Timber and not removed until measured by the Sale Administrator. Payment will be made at contract prices or average prices, if not on the contract.

4.1.6 - Road Construction (4/24)

Construction of new roads or improvements of existing roads shall be done in such a way as to minimize the environmental and visual impacts. Merchantable trees shall be cut and utilized unless otherwise directed. Non-merchantable trees shall be severed and laid flat on the ground. Slash shall be scattered, and not left in windrows and kept a minimum of 10 feet back from the road edge. Stumps shall be set upright, not left on edge, and be moved at least 10 feet away from the road edge. Disturbed soil shall be feathered into the woods and not left in berms or windrows.

4.1.7 - Road Closure (10/11)

All new roads built into the sale must be blocked to vehicle traffic upon completion of the sale. Overgrown roads that are reopened shall be considered new roads. In general, this will require constructing a four (4') foot high berm of stumps and logs covered with earth. Temporary berms may be required if no sale activity occurs for 30 or more consecutive days. Contact the Sale Administrator for specific details of design and placement.

4.2 - Maintenance

4.2.3 - Road maintenance (8/13)

The following road maintenance may be required: Within 60 days of completion of hauling, or if no hauling occurs for 60 days, the Unit Manager, or his/her representative, may require State Roads to be maintained and graded. This includes cleaning of drainage areas, grading, crowning, and filling with gravel, if necessary. Damages will be assessed if grading/repair does not occur.

4.3 - Public Right-of-Way

4.3.2 - County R-O-W (12/06)

The County must be contacted prior to crossing or harvesting in the County Road R-O-W. This applies to Payment Units 1, 2, and 10 that are adjacent to County Road 565, Crooked Lake Road, and Chain of Lake Road.

5 - Operations

5.1 - Notification

5.1.1 - Pre-sale Conference (10/16)

A pre-sale conference between the Purchaser and Sale Administrator is required prior to beginning any operations. The Unit Manager or his/her representative must be contacted at least 3 days in advance to schedule the conference.

5.2 - Conduct of Operations

5.2.2 - Hazard Trees/Snags

5.2.2.1 - Den Trees (10/16)

Obvious hollow and/or den trees shall be protected and left standing unless they are a safety hazard.

5.2.3 - Operating Restrictions

5.2.3.1 - Operating Restrictions (9/11)

Within Payment Unit(s) 12, unless changed by written agreement, cutting, skidding, and hauling are limited to the period of

December 15 to April 15. This restriction is because of wet soils.

5.2.3.3 - Bark Slippage Restriction (3/09)

Within Payment Unit(s) 7 and 8, unless changed by written agreement, cutting and skidding are not permitted during the period of April 15 to July 15. This restriction is because of bark slippage.

5.2.3.4 - Oak Wilt Restriction, No Exceptions (1/18)

Within Payment Units 7-13, cutting, skidding, brushing, and road establishment within the Payment Unit are not permitted during the period of April 15 to July 15. No exceptions will be granted. In addition, brushing of access roads may not be permitted from April 15 to July 15 if Sale Administrator determines brushing will increase risk of oak wilt. This is necessary to reduce the spread of oak wilt.

5.2.32 - Decking/Landing Restoration (9/13)

All decking and landing areas must have the surface area restored to a condition equal to or better than before. This is to ensure the proper regeneration of the stand. Wood debris, chips and "cookies" from trimmings must be removed or scattered away from landing and loading areas and may not be windrowed on the edge.

5.2.38 - No Decking Against Live Trees (2/04)

Cut products may not be decked against unmarked or designated leave trees.

5.2.39 - ORV Trail/Route Protection (4/18)

The Bass Lake motorcycle trail is an ORV trail and is shown on the Timber Sale Map. Do not cut trees or damage posts with yellow ORV markers. All stumps within 5 feet of the trail must be cut flush with the ground. Maintain a 20-foot-wide slash, debris, and rut free zone daily using the ORV trail or route as the centerline. Do not run equipment down the ORV trail or route. Skidding across the trail or route may only occur in locations approved by the Sale Administrator.

5.4 - Soil Protection

5.4.1 - Rutting Restriction, General (7/16)

Operations are to cease immediately if equipment and weather conditions result in rutting of roads and/or skid trails which is 12 inches or greater in depth and 50 feet in length. The Unit Manager or his/her representative may restrict hauling and/or skidding if ruts exceed the specified depth. With the Unit Manager or his/her representative's approval, the Purchaser may return to the area when the risk of rutting has decreased.

5.4.2 - Skid Trails (2/04)

Skid trails up and down slopes should be avoided. If, however, this is unavoidable, these trails will be left in a non-erodible condition using water bars, logs, and slash. Placing of slash on these skid trails while logging is ongoing may alleviate need for any further action. At the direction of the Sale Administrator, seed, fertilizer, and mulch may also be required.

6 - Safety and Fire Prevention

6.2 - Signing

6.2.1 - Road Posting (10/20)

The Purchaser is responsible for posting and maintaining caution signs on County Road 565, Crooked Lake Road, and Chain Lake Trail prior to beginning operations. The road must be posted at appropriate distances from the Sale Area to warn of logging activity and truck traffic. Signs must be removed when harvest operations are suspended or completed. The Purchaser will provide these signs.

6.2.3 - Recreational Trail Posting (10/20)

The Purchaser is responsible for posting and maintaining caution signs on Bass Lake Motorcycle Trail prior to beginning operations. The trail must be posted at appropriate distances from the Sale Area to warn of logging activity and truck traffic at both ends of the trail. Signs must be removed when harvest operations are suspended or completed. The Purchaser will provide these signs.

**TIMBER SALE MAP**

This information provided by authority of Part 525, 1994 PA 451, as amended.

Sale Number

32-012-25

Date

03/28/2025

Forest Management Unit

Gwinn Mgt Unit

County

Marquette

Mapped By: Fischer

Cruised By: Fischer, Rosten, Yeo

Scale

1:7,920

Page

1

Of

2

Township

45N

Range

26W

Section(s) and E1/2NW,S1/2NE,NESW,N1/2SE;

Subdivision(s) Sec. 16 NWNW,S1/2NW,SWNE,N1/2SW,SESW; Sec. 16 SE; Sec. 21 NENW,NWNE; Sec. 9

Cover Type

A = Aspen	J = Jack Pine	O = Oak	U = Upland Brush
B = Paper Birch	K = Rock	P = Lowland Poplar	UM = Upland Mix Forest
C = Cedar	L = Lowland Brush	Q = Mixed Swamp Conifer	V = Bog or Marsh
D = Treed Bog	LM = Lowland Mix Forest	R = Red Pine	W = White Pine
E = Swamp Hardwoods	M = Maple, Beech, Birch	S = Black Spruce	X = Non Stocked
F = Spruce/Fir	MC = Mixed Conifer	T = Tamarack	Y = Sand
G = Grass	MD = Mixed Deciduous		Z = Water
H = Hemlock	N = Marsh		

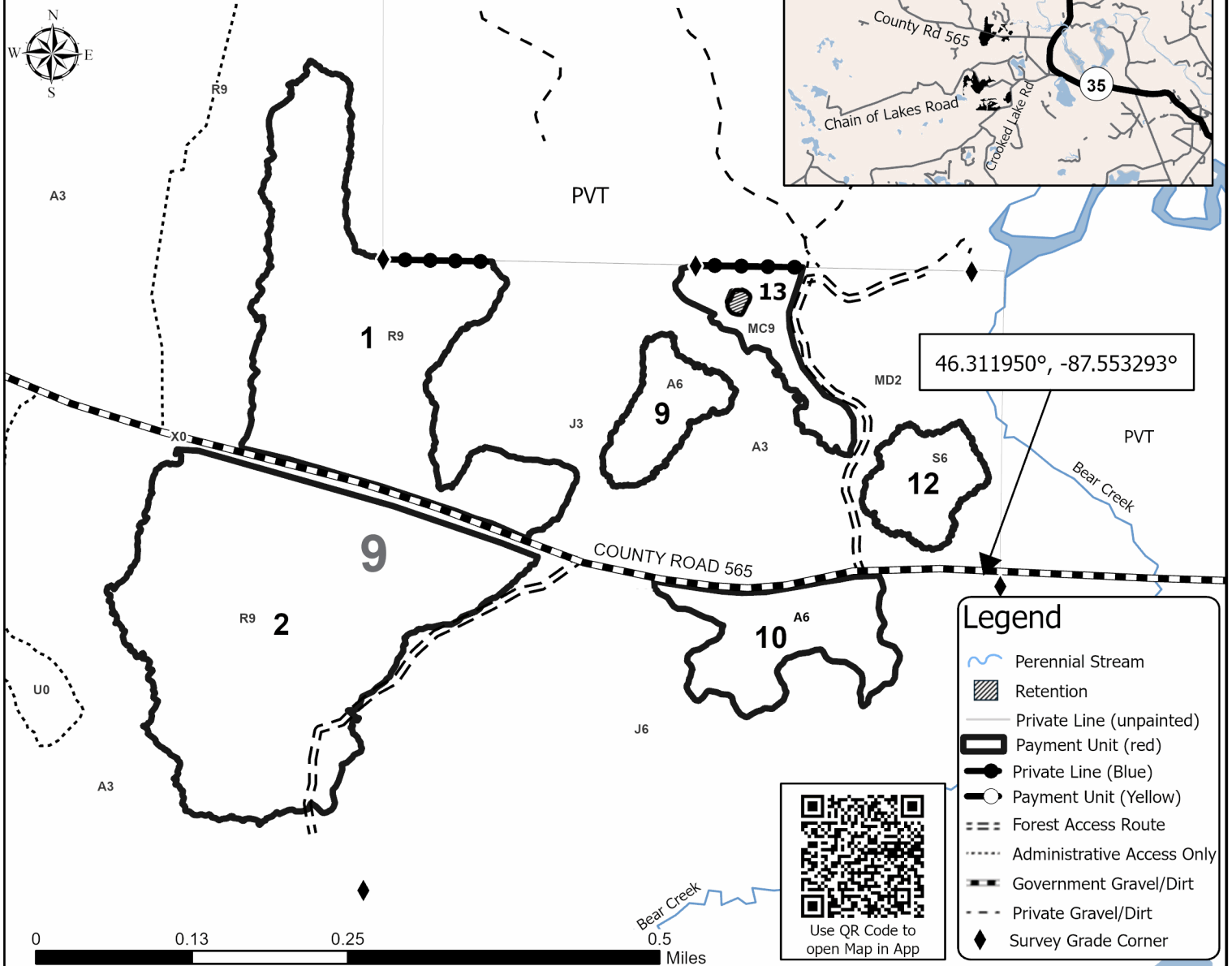
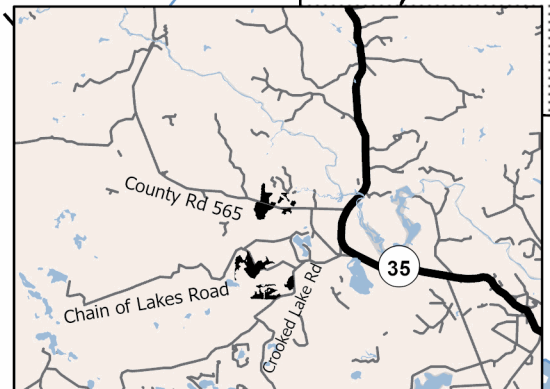
Density

0 = Non Stocked	5 = Pole Timber Medium
1 = Seedling Sapling Poor	6 = Pole Timber Well
2 = Seedling Sapling Medium	7 = Saw Timber Poor
3 = Seedling Sapling Well	8 = Saw Timber Medium
4 = Pole Timber Poor	9 = Saw Timber Well

Payment Unit	Acres	Payment Unit	Acres	Payment Unit	Acres
1	26.9	6	21.1	11	18.1
2	36.8	7	10.9	12	4.3
3	17.6	8	15.5	13	4.5
4	27	9	4.1		
5	20	10	7.8		

565 Crooked Chains**214.6 Acres**

Compartment 32033

Locator Map 1:200,000

**TIMBER SALE MAP**

This information provided by authority of Part 525, 1994 PA 451, as amended.

Sale Number
32-012-25Date
03/31/2025

Forest Management Unit

County

Mapped By: Fischer

Scale

Page

Of

Gwynn Mgt Unit

Marquette

Cruised By: Fischer, Rosten, Yeo

1:10,000

2

2

Township
45NRange
26WSection(s) and E1/2NW,S1/2NE,NESW,N1/2SE;
Subdivision(s) Sec. 16 NWNW,S1/2NW,SWNE,N1/2SW,SESW; Sec. 16 SE; Sec. 21 NENW,NWNE; Sec. 9**Cover Type**

A = Aspen	J = Jack Pine	O = Oak	U = Upland Brush
B = Paper Birch	K = Rock	P = Lowland Poplar	UM = Upland Mix Forest
C = Cedar	L = Lowland Brush	Q = Mixed Swamp Conifer	V = Bog or Marsh
D = Treed Bog	LM = Lowland Mix Forest	R = Red Pine	W = White Pine
E = Swamp Hardwoods	M = Maple, Beech, Birch	S = Black Spruce	X = Non Stocked
F = Spruce/Fir	MC = Mixed Conifer	T = Tamarack	Y = Sand
G = Grass	MD = Mixed Deciduous		Z = Water
H = Hemlock	N = Marsh		

Density

0 = Non Stocked	5 = Pole Timber Medium
1 = Seedling Sapling Poor	6 = Pole Timber Well
2 = Seedling Sapling Medium	7 = Saw Timber Poor
3 = Seedling Sapling Well	8 = Saw Timber Medium
4 = Pole Timber Poor	9 = Saw Timber Well

Locator Map 1:200,000

Payment Unit	Acres	Payment Unit	Acres	Payment Unit	Acres
1	26.9	6	21.1	11	18.1
2	36.8	7	10.9	12	4.3
3	17.6	8	15.5	13	4.5
4	27	9	4.1		
5	20	10	7.8		

565 Crooked ChainsCompartment 32033
214.6 Acres