



**DEPARTMENT OF NATURAL RESOURCES
STATE OF MICHIGAN
TIMBER SALE PROSPECTUS #7605**

SCHEDULED SALE DATE AND TIME: 3:00 p.m. (local time) on July 10, 2025.

LOCATION: NEWBERRY MGMT UNIT, 5666 S STATE HWY M 123, NEWBERRY, MI 49868.

CONTACT NAME: Keith Magnusson

PHONE NUMBER: (906) 291-0120

PROSPECTUS NOTE: The bidder is advised to inspect the sale area and review the location, estimated volumes, operating costs and contract terms of proposed sales. Please be aware that some landowners may request 60 days or more notice for access across their land.

Notice is hereby given that bids will be received by the Unit Manager, NEWBERRY MANAGEMENT UNIT, for certain timber on the following described lands:

Bear Surprise Pine (42-017-24) / T50N, R08W, SEC. 15, SWSW.

T50N, R08W, SEC. 16, W1/2SW.

T50N, R08W, SEC. 17, E1/2SE.

T50N, R08W, SEC. 20, E1/2NE, N1/2SW, SWSW, N1/2SE.

T50N, R08W, SEC. 21, NW, NE.

T50N, R08W, SEC. 22, NW, SESW.

T50N, R08W, SEC. 27, N1/2NW.

Luce County, Advertised Price \$140,934.55, 348.1 Acres, Red Pine, White Pine.

SALE NOTE: Within Payment Unit(s) 1-13, hauling is limited to the period of October 1 to March 1 because of the sandy nature of County Road 412. See Sale Spec 5.2.3.1 for details.

A recreation site such as a trail, pathway, or campground is within the sale area or the vicinity. Certain restrictions/specifications may be applicable including time restrictions.

TIMBER SALE INFORMATION

Bear Surprise Pine (42-017-24)

T50N, R08W, SEC. 15; T50N, R08W, SEC. 16; T50N, R08W, SEC. 17; T50N, R08W, SEC. 20; T50N, R08W, SEC. 21; T50N, R08W, SEC. 22; T50N, R08W, SEC. 27.

SALE NOTE: Within Payment Unit(s) 1-13, hauling is limited to the period of October 1 to March 1 because of the sandy nature of County Road 412. See Sale Spec 5.2.3.1 for details.

A recreation site such as a trail, pathway, or campground is within the sale area or the vicinity. Certain restrictions/specifications may be applicable including time restrictions.

A timber sale contract for this lump sum, sealed bid timber sale will be awarded to the responsible bidder offering the highest sealed bid price. All units of volume listed below were estimated using the Inventory Manager computer program and the new Michigan taper model. Bids must be at or above the following advertised price for each product and species:

<u>PRODUCTS & SPECIES</u>	<u>ESTIMATED UNITS*</u>	<u>ADVERTISED PRICE</u>
Pulpwood		
Balsam Fir	10 Cords	\$ 6.95 / Cord
Black Spruce	181 Cords	\$ 4.85 / Cord
Jack Pine	1,329 Cords	\$ 16.25 / Cord
Paper Birch	27 Cords	\$ 2.30 / Cord
Red Maple	53 Cords	\$ 9.05 / Cord
Red Pine	1,813 Cords	\$ 50.80 / Cord
White Pine	1,672 Cords	\$ 15.40 / Cord

* The total volume is statistically estimated within plus (+) or minus (-) 8.77 percent. There are an estimated 5,473 cords on this timber sale, plus or minus 480 cords at the 95% confidence level. The estimated units are final and not subject to adjustment. Prospective bidders are urged to examine this timber and to make their own estimates of quantity and quality.

BOND AND PAYMENT SCHEDULE:

1. A bond in the amount of \$7,046.73 to insure faithful performance of the conditions of the contract will be deposited by the successful bidder within 21 days of the sale award.
2. Cutting in any sale or unit without the required advance payment would be considered a trespass.
3. Total payment must be paid in advance or according to the following schedule:
 - (a) Ten percent (10%) of the sale value must be paid within 21 days of the sale award.
 - (b) The 10% down payment will be credited towards the first unit cut.
 - (c) Payment for each of the following units must be made before cutting begins in that unit:

<u>PAYMENT UNIT NUMBER</u>	<u>PERCENT OF TOTAL SALE VALUE</u>
01	11.3%
02	5.7%
03	4.4%
04	4.9%
05	3.2%
06	2.2%
07	12.2%
08	4.2%
09	15.4%
10	10.8%
11	10.6%
12	9.2%
13	5.9%

4. If no cutting takes place, the 10% down payment will not be refunded.
5. Operations on the contract issued will terminate on 12/31/2029.

SALE STATISTICS

Volumes were calculated in cubic feet using the Michigan taper model. Cubic foot volume includes all wood inside bark for the product indicated. For display purposes, cubic feet were converted to cords and MBF using a simple conversion factor, e.g. 79 cubic feet per cord and 185 cubic feet per MBF. The cubic foot volumes are precise; the cords and MBF volumes are not. Cubic foot volume cannot be directly converted to cords or boards with precision.

SALE VOLUMES

The total estimated sale volume may not equal the sum of the species/products due to the nature of statistical calculations associated with double sampling methodology.

VOLUME			STATISTICAL RANGE IN CORDS	
TOTAL CUBIC FEET	TOTAL CORDS	PERCENT ERROR	MINIMUM	MAXIMUM
432,353	5,473	8.77%	4,993	5,953

VDU VOLUMES

A VDU is a Volume Determination Unit. Volumes and their associated statistics are calculated at the VDU level and summarized to the sale level. There is often a one to one relationship between a VDU and a Payment Unit, but not always, depending on the cruise design. Refer to the VDU TO PAYMENT UNIT table.

	VOLUME			RANGE IN CORDS	
VDU	TOTAL CUBIC FEET	TOTAL CORDS	PERCENT ERROR	MINIMUM	MAXIMUM
7	50,518	639	20.76%	507	772
17	37,621	476	25.74%	354	599
22	24,066	305	26.68%	223	386
24	134,041	1,697	17.71%	1,396	1,997
60	40,241	509	29.08%	361	658
64	31,415	398	25.95%	294	501
203	114,451	1,449	18.83%	1,176	1,721
TOTAL:	432,353	5,473		4,312	6,634

VDU TO PAYMENT UNIT

When a VDU is associated with more than one Payment Unit (PU), the VDU volumes are assigned to the PU based on acres of the VDU within the PU.

VDU	VDU ACRES	PU	PU ACRES
7	66.8	1	44.4
		2	22.4
17	35.1	3	16.8
		4	18.3
22	28.8	5	17.3
		6	11.5
24	96.8	7	37.5
		8	13.0
		9	46.3
60	11.7	12	11.7
64	32.7	13	32.7
203	76.2	10	38.5
		11	37.7
TOTAL:	348.1		348.1

DESCRIPTION OF TIMBER BY PU (PU)

PU	MARKET GROUP	PRODUCT	QUANTITY	UNIT	ACRES	ADVERTISE PRICE
1	Jack Pine	Pulpwood	2	Cords	44.4	\$15,989.60
	<i>Jack Pine</i>		2	<i>Cords</i>		
	Paper Birch		3	Cords		
	Red Pine		287	Cords		
	<i>Red Pine</i>	<i>Sawtimber</i>	98.6	<i>MBF</i>		
	<i>Red Pine</i>	<i>Pulpwood</i>	90	<i>Cords</i>		
	White Pine		89	Cords		
	<i>White Pine</i>	<i>Sawtimber</i>	28.9	<i>MBF</i>		
	<i>White Pine</i>	<i>Pulpwood</i>	31	<i>Cords</i>		
2	Jack Pine	Pulpwood	1	Cords	22.4	\$8,077.55
	<i>Jack Pine</i>		1	<i>Cords</i>		
	Paper Birch		1	Cords		
	Red Pine		145	Cords		
	<i>Red Pine</i>	<i>Sawtimber</i>	49.7	<i>MBF</i>		
	<i>Red Pine</i>	<i>Pulpwood</i>	46	<i>Cords</i>		
	White Pine		45	Cords		
	<i>White Pine</i>	<i>Sawtimber</i>	14.6	<i>MBF</i>		
	<i>White Pine</i>	<i>Pulpwood</i>	16	<i>Cords</i>		
3	Black Spruce	Pulpwood	5	Cords	16.8	\$6,268.45
	<i>Black Spruce</i>	<i>Sawtimber</i>	0.4	<i>MBF</i>		
	<i>Black Spruce</i>	<i>Pulpwood</i>	4	<i>Cords</i>		
	Jack Pine		75	Cords		
	<i>Jack Pine</i>	<i>Sawtimber</i>	12.3	<i>MBF</i>		
	<i>Jack Pine</i>	<i>Pulpwood</i>	50	<i>Cords</i>		
	Red Maple		5	Cords		
	Red Pine		85	Cords		
	<i>Red Pine</i>	<i>Sawtimber</i>	19.0	<i>MBF</i>		
	<i>Red Pine</i>	<i>Pulpwood</i>	47	<i>Cords</i>		
	White Pine		43	Cords		
	<i>White Pine</i>	<i>Sawtimber</i>	11.1	<i>MBF</i>		
	<i>White Pine</i>	<i>Pulpwood</i>	21	<i>Cords</i>		
4	Black Spruce	Pulpwood	6	Cords	18.3	\$6,839.65
	<i>Black Spruce</i>	<i>Sawtimber</i>	0.5	<i>MBF</i>		
	<i>Black Spruce</i>	<i>Pulpwood</i>	5	<i>Cords</i>		
	Jack Pine		82	Cords		
	<i>Jack Pine</i>	<i>Sawtimber</i>	13.5	<i>MBF</i>		
	<i>Jack Pine</i>	<i>Pulpwood</i>	55	<i>Cords</i>		
	Red Maple		5	Cords		
	Red Pine		93	Cords		
	<i>Red Pine</i>	<i>Sawtimber</i>	20.7	<i>MBF</i>		
	<i>Red Pine</i>	<i>Pulpwood</i>	52	<i>Cords</i>		
	White Pine		46	Cords		
	<i>White Pine</i>	<i>Sawtimber</i>	12.1	<i>MBF</i>		
	<i>White Pine</i>	<i>Pulpwood</i>	22	<i>Cords</i>		
5	Jack Pine	Pulpwood	3	Cords	17.3	\$4,540.15
	<i>Jack Pine</i>	<i>Sawtimber</i>	0.5	<i>MBF</i>		
	<i>Jack Pine</i>	<i>Pulpwood</i>	2	<i>Cords</i>		
	Paper Birch		1	Cords		
	Red Maple		2	Cords		
	Red Pine		58	Cords		
	<i>Red Pine</i>	<i>Sawtimber</i>	24.6	<i>MBF</i>		
	<i>Red Pine</i>	<i>Pulpwood</i>	9	<i>Cords</i>		
	White Pine		99	Cords		
	<i>White Pine</i>	<i>Sawtimber</i>	32.6	<i>MBF</i>		
	<i>White Pine</i>	<i>Pulpwood</i>	34	<i>Cords</i>		

DESCRIPTION OF TIMBER BY PU (PU), CON'T

PU	MARKET GROUP	PRODUCT	QUANTITY	UNIT	ACRES	ADVERTISE PRICE
6	Jack Pine	Pulpwood	3	Cords	11.5	\$3,042.30
	<i>Jack Pine</i>	<i>Sawtimber</i>	<i>0.3</i>	<i>MBF</i>		
	<i>Jack Pine</i>	<i>Pulpwood</i>	<i>2</i>	<i>Cords</i>		
	Paper Birch		1	Cords		
	Red Maple		1	Cords		
	Red Pine		39	Cords		
	<i>Red Pine</i>	<i>Sawtimber</i>	<i>16.4</i>	<i>MBF</i>		
	<i>Red Pine</i>	<i>Pulpwood</i>	<i>6</i>	<i>Cords</i>		
	White Pine		65	Cords		
	<i>White Pine</i>	<i>Sawtimber</i>	<i>21.6</i>	<i>MBF</i>		
	<i>White Pine</i>	<i>Pulpwood</i>	<i>22</i>	<i>Cords</i>		
7	Balsam Fir	Pulpwood	4	Cords	37.5	\$17,244.55
	Black Spruce		50	Cords		
	<i>Black Spruce</i>	<i>Sawtimber</i>	<i>0.9</i>	<i>MBF</i>		
	<i>Black Spruce</i>	<i>Pulpwood</i>	<i>48</i>	<i>Cords</i>		
	Jack Pine		72	Cords		
	<i>Jack Pine</i>	<i>Sawtimber</i>	<i>7.7</i>	<i>MBF</i>		
	<i>Jack Pine</i>	<i>Pulpwood</i>	<i>57</i>	<i>Cords</i>		
	Paper Birch		7	Cords		
	Red Maple		7	Cords		
	Red Pine		238	Cords		
	<i>Red Pine</i>	<i>Sawtimber</i>	<i>63.7</i>	<i>MBF</i>		
	<i>Red Pine</i>	<i>Pulpwood</i>	<i>111</i>	<i>Cords</i>		
	White Pine		236	Cords		
	<i>White Pine</i>	<i>Sawtimber</i>	<i>54.7</i>	<i>MBF</i>		
	<i>White Pine</i>	<i>Pulpwood</i>	<i>127</i>	<i>Cords</i>		
8	Balsam Fir	Pulpwood	1	Cords	13.0	\$5,960.65
	Black Spruce		18	Cords		
	<i>Black Spruce</i>	<i>Sawtimber</i>	<i>0.3</i>	<i>MBF</i>		
	<i>Black Spruce</i>	<i>Pulpwood</i>	<i>17</i>	<i>Cords</i>		
	Jack Pine		25	Cords		
	<i>Jack Pine</i>	<i>Sawtimber</i>	<i>2.7</i>	<i>MBF</i>		
	<i>Jack Pine</i>	<i>Pulpwood</i>	<i>20</i>	<i>Cords</i>		
	Paper Birch		2	Cords		
	Red Maple		3	Cords		
	Red Pine		82	Cords		
	<i>Red Pine</i>	<i>Sawtimber</i>	<i>22.1</i>	<i>MBF</i>		
	<i>Red Pine</i>	<i>Pulpwood</i>	<i>38</i>	<i>Cords</i>		
	White Pine		82	Cords		
	<i>White Pine</i>	<i>Sawtimber</i>	<i>19.0</i>	<i>MBF</i>		
	<i>White Pine</i>	<i>Pulpwood</i>	<i>44</i>	<i>Cords</i>		
9	Balsam Fir	Pulpwood	5	Cords	46.3	\$21,303.85
	Black Spruce		60	Cords		
	<i>Black Spruce</i>	<i>Sawtimber</i>	<i>1.1</i>	<i>MBF</i>		
	<i>Black Spruce</i>	<i>Pulpwood</i>	<i>58</i>	<i>Cords</i>		
	Jack Pine		89	Cords		
	<i>Jack Pine</i>	<i>Sawtimber</i>	<i>9.6</i>	<i>MBF</i>		
	<i>Jack Pine</i>	<i>Pulpwood</i>	<i>70</i>	<i>Cords</i>		
	Paper Birch		8	Cords		
	Red Maple		9	Cords		
	Red Pine		294	Cords		
	<i>Red Pine</i>	<i>Sawtimber</i>	<i>78.7</i>	<i>MBF</i>		
	<i>Red Pine</i>	<i>Pulpwood</i>	<i>137</i>	<i>Cords</i>		
	White Pine		292	Cords		
	<i>White Pine</i>	<i>Sawtimber</i>	<i>67.6</i>	<i>MBF</i>		

DESCRIPTION OF TIMBER BY PU (PU), CON'T

PU	MARKET GROUP	PRODUCT	QUANTITY	UNIT	ACRES	ADVERTISE PRICE
9 con't	<i>White Pine</i>	<i>Pulpwood</i>	157	<i>Cords</i>		
10	Jack Pine	Pulpwood	400	Cords	38.5	\$15,291.00
	<i>Jack Pine</i>		400	<i>Cords</i>		
	Red Pine		120	Cords		
	<i>Red Pine</i>	<i>Sawtimber</i>	47.6	<i>MBF</i>		
	<i>Red Pine</i>	<i>Pulpwood</i>	25	<i>Cords</i>		
	White Pine		175	Cords		
	<i>White Pine</i>	<i>Sawtimber</i>	60.8	<i>MBF</i>		
	<i>White Pine</i>	<i>Pulpwood</i>	53	<i>Cords</i>		
11	Jack Pine	Pulpwood	392	Cords	37.7	\$14,931.60
	<i>Jack Pine</i>		392	<i>Cords</i>		
	Red Pine		117	Cords		
	<i>Red Pine</i>	<i>Sawtimber</i>	46.7	<i>MBF</i>		
	<i>Red Pine</i>	<i>Pulpwood</i>	24	<i>Cords</i>		
	White Pine		170	Cords		
	<i>White Pine</i>	<i>Sawtimber</i>	59.6	<i>MBF</i>		
	<i>White Pine</i>	<i>Pulpwood</i>	51	<i>Cords</i>		
12	Black Spruce	Pulpwood	10	Cords	11.7	\$12,934.35
	<i>Black Spruce</i>		10	<i>Cords</i>		
	Jack Pine		127	Cords		
	<i>Jack Pine</i>	<i>Sawtimber</i>	15.6	<i>MBF</i>		
	<i>Jack Pine</i>	<i>Pulpwood</i>	96	<i>Cords</i>		
	Paper Birch		3	Cords		
	Red Pine		165	Cords		
	<i>Red Pine</i>	<i>Sawtimber</i>	69.1	<i>MBF</i>		
	<i>Red Pine</i>	<i>Pulpwood</i>	27	<i>Cords</i>		
	White Pine		158	Cords		
	<i>White Pine</i>	<i>Sawtimber</i>	49.5	<i>MBF</i>		
	<i>White Pine</i>	<i>Pulpwood</i>	59	<i>Cords</i>		
13	Black Spruce	Pulpwood	33	Cords	32.7	\$8,331.65
	<i>Black Spruce</i>	<i>Sawtimber</i>	1.5	<i>MBF</i>		
	<i>Black Spruce</i>	<i>Pulpwood</i>	30	<i>Cords</i>		
	Jack Pine		57	Cords		
	<i>Jack Pine</i>	<i>Sawtimber</i>	5.0	<i>MBF</i>		
	<i>Jack Pine</i>	<i>Pulpwood</i>	47	<i>Cords</i>		
	Paper Birch		1	Cords		
	Red Maple		21	Cords		
	Red Pine		87	Cords		
	<i>Red Pine</i>	<i>Sawtimber</i>	26.9	<i>MBF</i>		
	<i>Red Pine</i>	<i>Pulpwood</i>	33	<i>Cords</i>		
	White Pine		171	Cords		
	<i>White Pine</i>	<i>Sawtimber</i>	46.7	<i>MBF</i>		
	<i>White Pine</i>	<i>Pulpwood</i>	78	<i>Cords</i>		
TOTAL:			5,081	Cords		

Sale Specific Conditions & Requirements

Sale Name: Bear Surprise Pine

Sale Number: 42-017-24 Seq#: 1

1 - Sale Area

1.2 - Boundaries

1.2.1 - Painted Boundaries (9/19)

The sale boundary and Payment Unit boundaries are marked and identified by blue, red and yellow paint. Exterior sale boundary lines against private property are marked with blue paint. Exterior sale boundary lines against state are marked with red paint. Interior Payment Unit boundaries are marked with yellow paint. The painted boundary line trees are not Included Timber and are to be protected unless marked with orange paint. Yellow painted trees designating an interior Payment Unit boundary are only to be cut when all surrounding Payment Units have been paid.

2 - Timber Specifications

2.1 - Included Timber

2.1.1 - Clearcut Unit(s) with Unmerchantable Trees (6/14)

Within Payment Unit(s) 10, 11, and 12, cut all trees that are two (2) inches or more at DBH, except do not cut any oak that may be present in these units.

2.1.3 - Cut Tree Marked Unit(s) (12/08)

Within Payment Unit(s) 1-4, 7-9, and 13, all trees are designated for cutting when marked with orange paint above and below stump height, regardless of merchantability.

In addition, within Payment Units 3 and 4, remove all jack pine and aspen, except do not cut any aspen trees ringed in green paint, or any birch or oak that are present.

Furthermore, within Payment Units 1 and 2, oak may be harvested for maneuverability if needed (avoid harvesting large diameter oak) but must be decked separately to be scaled by the Sale Administrator. Payment will be made at contract prices or average prices, if not on the contract.

Also, within Payment Units 7, 8, and 9, do not cut any oak.

Finally, within Payment Unit 13, all jack pine, spruce, and balsam fir are designated for cutting, regardless of merchantability, except do not cut oak.

2.1.5 - Overstory Removal Unit(s) (8/11)

Within Payment Unit(s) 5 and 6, all trees which meet minimum piece specifications in 2.2 Utilization, are designated for cutting, except do not cut any oak or trees ringed in green paint.

3 - Payments

3.3 - Pre-measured Sales

3.3.4 - Dividing Payment Units (7/14)

Payment Unit(s) 1, 7, and 9-12 may be divided at the request of the Purchaser and upon approval of the Unit Manager. Dividing Payment Units is a contract modification which requires a Timber Sale Contract Amendment. There will be only one division per Payment Unit.

4 - Transportation

4.1 - Construction

4.1.4 - Timber Removed for Construction (3/23)

Trees cut or damaged in the process of pre-approved road, landing, or skid trail construction will be decked in an area separate from other Designated Timber and not removed until measured by the Sale Administrator. Payment will be made at

contract prices or average prices, if not on the contract.

4.1.6 - Road Construction (4/24)

Construction of new roads or improvements of existing roads shall be done in such a way as to minimize the environmental and visual impacts. Merchantable trees shall be cut and utilized unless otherwise directed. Non-merchantable trees shall be severed and laid flat on the ground. Slash shall be scattered, and not left in windrows and kept a minimum of 10 feet back from the road edge. Stumps shall be set upright, not left on edge, and be moved at least 10 feet away from the road edge. Disturbed soil shall be feathered into the woods and not left in berms or windrows.

4.1.7 - Road Closure (10/11)

All new roads built into the sale must be blocked to vehicle traffic upon completion of the sale. Overgrown roads that are reopened shall be considered new roads. In general, this will require constructing a four (4') foot high berm of stumps and logs covered with earth. These roads must be rendered impassable to cars and trucks. All stumps from road building and landing construction must be reserved to block any newly constructed roads upon completion of the sale. These stumps must be scattered along the road system to prohibit vehicular movement. Contact the Sale Administrator for specific details of design and placement.

4.2 - Maintenance

4.2.1 - Hauling Restriction (12/08)

Hauling may be restricted on forest roads by the Unit Manager or his/her representative. The restriction may occur during wet or extremely dry weather conditions.

4.2.2 - Fill Material (4/07)

To maintain roads, fill material may be needed in areas where "holes" exist or may be expected to develop. This fill material should be placed before trucking begins.

4.2.3 - Road maintenance (8/13)

The following road maintenance may be needed, the road must be maintained and graded. This includes cleaning of drainage areas, grading, crowning and filling with gravel, if necessary. Damages will be assessed if grading/repair does not occur. Provide a description of the road maintenance here.

4.2.4 - Grading (10/16)

For completion of the sale, state forest roads must be graded. In general, this will require a road grader to shape up the roads after forest products have been hauled off site. This includes cleaning of drainage areas, grading, crowning and filling with gravel, if necessary. The grading equipment to be used must be approved by the Unit Manager or his/her representative.

4.2.5 - Two Wheel Drive Condition (2/04)

All existing trail roads on and adjacent to the Sale Area must be passable by two-wheel drive traffic for the duration of the sale.

5 - Operations

5.2 - Conduct of Operations

5.2.1 - Slash

5.2.1.8 - Slash Height (12/08)

No slash may exceed 24" inches in height.

5.2.1.11 - Slash for Reforestation (3/21)

To facilitate reforestation, the Sale Area shall be left with slash evenly distributed. Bunched tops within the cutting area shall be broken up and scattered. Stumps shall be cut low to the ground. Processing sites shall not be left with a compacted layer of slash; tops from these sites shall be hauled back into the cut area and scattered.

5.2.2 - Hazard Trees/Snags

5.2.2.1 - Den Trees (10/16)

Obvious hollow and/or den trees shall be protected and left standing unless they are a safety hazard.

5.2.3 - Operating Restrictions

5.2.3.1 - Operating Restrictions (9/11)

Within Payment Unit(s) 1-13, unless changed by written agreement, hauling is limited to the period of October 1 to March 1. This restriction is because of the very sandy nature of County Road 412. It does not hold up well to log truck traffic in the summer months.

5.2.3.6 - Bark Beetle Restriction (12/08)

In the event drought creates a high risk of pine bark beetle infestation, pine is not to be cut during the period March 1 through July 1, unless all portions of trees greater than two inches in diameter are removed from the sale area, reduced to chips, or treated to the satisfaction of the Unit Manager or his/her representative, within fifteen days of being severed from the stump. Pine log decks, pulpwood piles and treetops that are piled for chipping in the fall or winter within a 1/4 mile of susceptible sites must be removed before March 15. Residual slash must not be placed in piles or rows and must be spread over the site for quick drying. The Department of Natural Resources will exercise this specification if the risk of damage warrants.

5.2.32 - Decking/Landing Restoration (9/13)

All decking and landing areas must have the surface area restored to a condition equal to or better than before. This is to ensure the proper regeneration of the stand. Wood debris, chips and "cookies" from trimmings must be removed or scattered away from landing and loading areas and may not be windrowed on the edge.

5.2.38 - No Decking Against Live Trees (2/04)

Cut products may not be decked against unmarked or designated leave trees.

5.2.41 - Snowmobile Trail Protection (9/11)

Do not cut or damage posts with orange trail markers or traffic control signs. If the trail road is to be used for hauling during the snowmobile season, then a snow-covered base must be left on the trail. No decking of forest products will be permitted along the snowmobile trail.

5.4 - Soil Protection

5.4.1 - Rutting Restriction, General (7/16)

Operations are to cease immediately if equipment and weather conditions result in rutting of roads and/or skid trails which is 12 inches or greater in depth and 50 feet in length. The Unit Manager or his/her representative may restrict hauling and/or skidding if ruts exceed the specified depth. With the Unit Manager or his/her representative's approval, the Purchaser may return to the area when the risk of rutting has decreased.

5.4.2 - Skid Trails (2/04)

Skid trails up and down slopes should be avoided. If, however, this is unavoidable, these trails will be left in a non-erodible condition using water bars, logs, and slash. Placing of slash on these skid trails while logging is ongoing may alleviate need for any further action. At the direction of the Sale Administrator, seed, fertilizer, and mulch may also be required.

5.4.3 - Erosion Control (12/08)

Skid trails or haul roads may require erosion control structures or berms per direction of the Unit Manager or his/her representative.

5.4.4 - Slope Protection (9/19)

Skid trails and roads on slopes shall be water barred with slash and stumps as soon as use is complete to prevent erosion.

5.4.5 - Soil Caution (11/04)

Care must be taken to minimize soil damage due to the sandy soils.

5.8 - Protection of Endangered Species

5.8.5 - Protection of Raptor Nests (3/13)

All trees with raptor nests will be protected if found during harvesting operations. Notification will be made to the Unit Manager or his/her representative who will notify the Wildlife Biologist so an onsite evaluation and recommendation can be made, if necessary.

6 - Safety and Fire Prevention

6.2 - Signing

6.2.1 - Road Posting (10/20)

The Purchaser is responsible for posting and maintaining caution signs on County Road 412 prior to beginning operations. The road must be posted at appropriate distances from the Sale Area to warn of logging activity and truck traffic. Signs must be removed when harvest operations are suspended or completed. The DNR will provide these signs.

6.2.2 - Snowmobile Trail Posting (10/20)

The Purchaser is responsible for posting and maintaining caution signs on snowmobile trail prior to beginning operations during the snowmobile season (approximately December 1 to March 31). The trail must be posted at appropriate distances from the Sale Area to warn of logging activity and truck traffic. Signs must be removed when harvest operations are suspended or completed. The DNR will provide these signs.

7 - Other Conditions

7.2 - Extensions

7.2.1 - One Year Extension (2/04)

Given justification, only one (1), one-year extension may be granted if the contract has been paid for in full.

7.3 - Contract Modifications

7.3.3 - Modification for Reforestation (8/05)

When contractual work of Purchaser has been accepted for any Payment Unit identified on Sale Area Map, Payment Unit will be eliminated from the Sale Area on written notice so that reforestation operations can begin.



TIMBER SALE MAP

This information provided by authority of Part 525, 1994 PA 451, as amended.

Sale Number
42-017-24

Date
08/12/2024

Forest Management Unit	County	Mapped By: Payment
Newberry Mgt Unit	Luce	Cruised By: River Valley Forestry

Scale	Page	Of
1:27,800	1	1

Township	Range	Section(s) and Subdivision(s)
50N	08W	NW,NE; Sec. 22 NW,SESW; Sec. 27 N1/2NW; Sec. 15 SWSW; Sec. 16 W1/2SW; Sec. 17 E1/2SE; Sec. 20 E1/2NE,N1/2SW,SWSW,N1/2SE; Sec. 21

Cover Type

A = Aspen	J = Jack Pine	O = Oak	U = Upland Brush
B = Paper Birch	K = Rock	P = Lowland Poplar	UM = Upland Mix Forest
C = Cedar	L = Lowland Brush	Q = Mixed Swamp Conifer	V = Bog or Marsh
D = Treed Bog	LM = Lowland Mix Forest	R = Red Pine	W = White Pine
E = Swamp Hardwoods	M = Maple, Beech, Birch	S = Black Spruce	X = Non Stocked
F = Spruce/Fir	MC = Mixed Conifer	T = Tamarack	Y = Sand
G = Grass	MD = Mixed Deciduous		Z = Water
H = Hemlock	N = Marsh		

Density

0 = Non Stocked	5 = Pole Timber Medium
1 = Seedling Sapling Poor	6 = Pole Timber Well
2 = Seedling Sapling Medium	7 = Saw Timber Poor
3 = Seedling Sapling Well	8 = Saw Timber Medium
4 = Pole Timber Poor	9 = Saw Timber Well

Locator Map (1:200,000)

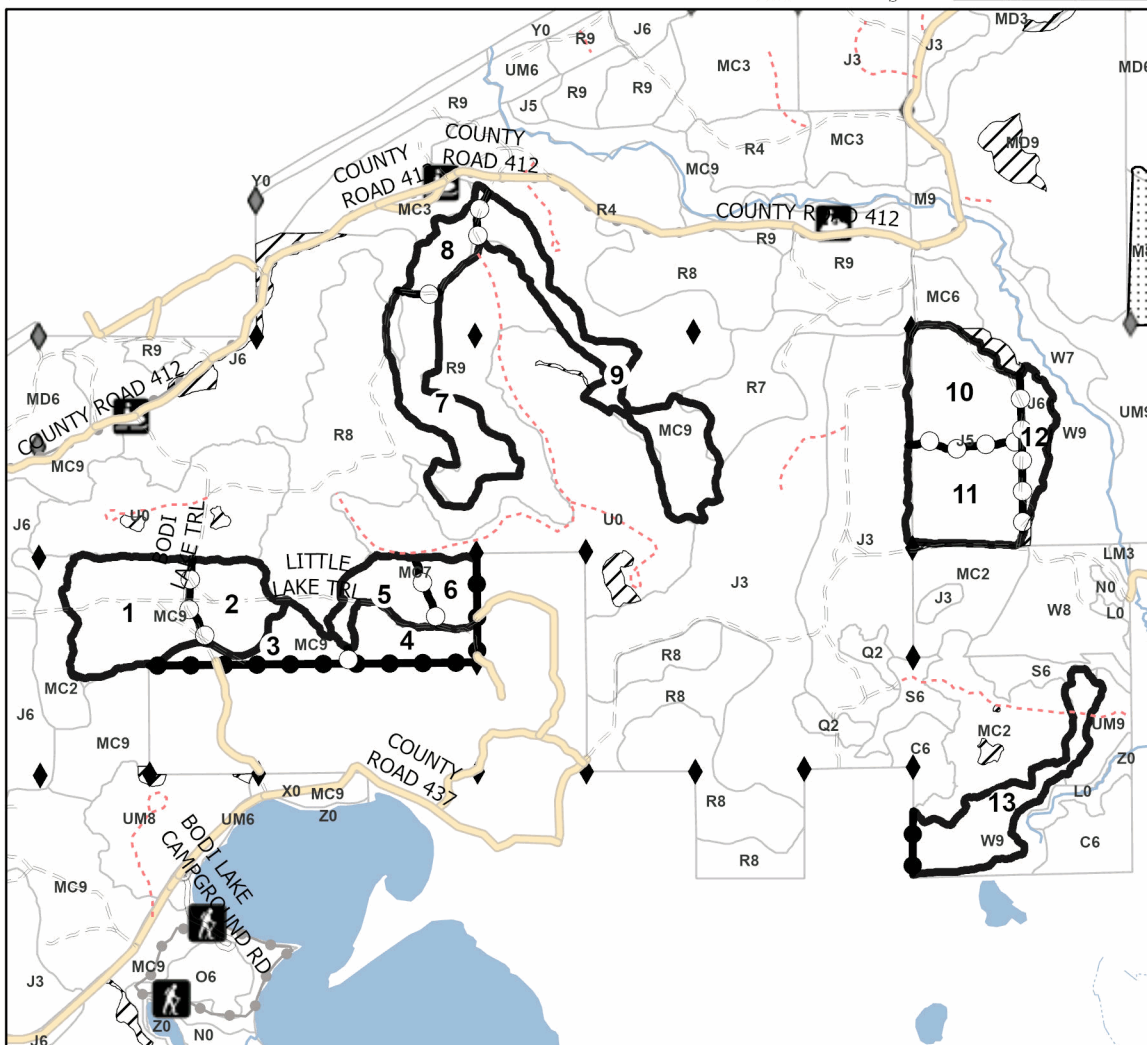


PU #	Acres	PU #	Acres	PU #	Acres
1	44.4	6	11.6	11	37.8
2	22.4	7	37.5	12	11.7
3	16.8	8	13.1	13	32.7
4	18.3	9	46.3		
5	17.3	10	38.5		

Bear Surprise Pine

348.1 Acres

0 0.42 0.85 1.7 Miles



Legend

- Payment Unit
- Nearby Timber Sale
- Stand
- Retention Areas
- Against State (Red)
- Payment Unit (Yellow)
- Private Line (Blue)
- Recreational Trail
- Field Grade Corner
- Survey Grade Corner

DNR Roads

- Primary Forest Road
- Secondary Forest Road
- Forest Access Route
- Administrative Access Only
- Non-DNR Road

Use QR Code to open Map in App

