



**DEPARTMENT OF NATURAL RESOURCES
STATE OF MICHIGAN
TIMBER SALE PROSPECTUS #7516**

SCHEDULED SALE DATE AND TIME: 4:00 p.m. (local time) on May 28, 2025.

LOCATION: TRAVERSE CITY MGMT UNIT, 2122 M 37 SOUTH, TRAVERSE CITY, MI 49685.

CONTACT NAME: Matthew Edison

PHONE NUMBER: (906) 291-0095

PROSPECTUS NOTE: The bidder is advised to inspect the sale area and review the location, estimated volumes, operating costs and contract terms of proposed sales. Please be aware that some landowners may request 60 days or more notice for access across their land.

Notice is hereby given that bids will be received by the Unit Manager, TRAVERSE CITY MANAGEMENT UNIT, for certain timber on the following described lands:

Lollipop Hardwoods (61-035-24) / T27N, R13W, SEC. 18, N1/2NW,NWNE.

T27N, R14W, SEC. 1, NENW,S1/2NW,SWNE,SW,SWSE.

T27N, R14W, SEC. 12, E1/2NW,NWNE.

T27N, R14W, SEC. 13, NENW,NWNE.

Benzie County, Advertised Price \$154,760.20, 198.3 Acres, Aspen, Hardwood.

SALE NOTE: A recreation site such as a trail, pathway, or campground is within the sale area or the vicinity. Certain restrictions/specifications may be applicable including time restrictions.

TIMBER SALE INFORMATION

Lollipop Hardwoods (61-035-24)

T27N, R13W, SEC. 18; T27N, R14W, SEC. 1; T27N, R14W, SEC. 12; T27N, R14W, SEC. 13.

Benzie County (Advertised Price \$154,760.20)

SALE NOTE: A recreation site such as a trail, pathway, or campground is within the sale area or the vicinity. Certain restrictions/specifications may be applicable including time restrictions.

A timber sale contract for this lump sum, sealed bid timber sale will be awarded to the responsible bidder offering the highest sealed bid price. All units of volume listed below were estimated using the Inventory Manager computer program and the new Michigan taper model. Bids must be at or above the following advertised price for each product and species:

<u>PRODUCTS & SPECIES</u>	<u>ESTIMATED UNITS*</u>	<u>ADVERTISED PRICE</u>
Sawtimber		
American Elm	1.1 MBF	\$ 42.00 / MBF
Basswood	61.8 MBF	\$ 116.00 / MBF
Beech	90.6 MBF	\$ 231.00 / MBF
Black Cherry	20.3 MBF	\$ 183.00 / MBF
Mixed Aspen	136.6 MBF	\$ 115.00 / MBF
Red Maple	322.7 MBF	\$ 125.00 / MBF
Red Oak	1.3 MBF	\$ 153.00 / MBF
Sugar Maple	103.0 MBF	\$ 341.00 / MBF
Pulpwood		
Mixed Aspen	291 Cords	\$ 23.90 / Cord
Mixed Hardwood	1,137 Cords	\$ 20.90 / Cord
Red Oak	8 Cords	\$ 27.50 / Cord
White Pine	22 Cords	\$ 27.05 / Cord

* The total volume is statistically estimated within plus (+) or minus (-) 11.96 percent. There are an estimated 3,184 cords on this timber sale, plus or minus 381 cords at the 95% confidence level. The estimated units are final and not subject to adjustment. Prospective bidders are urged to examine this timber and to make their own estimates of quantity and quality.

BOND AND PAYMENT SCHEDULE:

1. A bond in the amount of \$7,738.01 to insure faithful performance of the conditions of the contract will be deposited by the successful bidder within 21 days of the sale award.
2. Cutting in any sale or unit without the required advance payment would be considered a trespass.
3. Total payment must be paid in advance or according to the following schedule :
 - (a) Ten percent (10%) of the sale value must be paid within 21 days of the sale award.
 - (b) The 10% down payment will be credited towards the first unit cut.
 - (c) Payment for each of the following units must be made before cutting begins in that unit:

<u>PAYMENT UNIT NUMBER</u>	<u>PERCENT OF TOTAL SALE VALUE</u>
01	18.1%
02	3.0%
03	16.9%
04	20.7%
05	9.6%
06	11.3%
07	17.7%
08	2.7%

4. If no cutting takes place, the 10% down payment will not be refunded.
5. Operations on the contract issued will terminate on 12/31/2027.

SALE STATISTICS

Volumes were calculated in cubic feet using the Michigan taper model. Cubic foot volume includes all wood inside bark for the product indicated. For display purposes, cubic feet were converted to cords and MBF using a simple conversion factor, e.g. 79 cubic feet per cord and 185 cubic feet per MBF. The cubic foot volumes are precise; the cords and MBF volumes are not. Cubic foot volume cannot be directly converted to cords or boards with precision.

SALE VOLUMES

The total estimated sale volume may not equal the sum of the species/products due to the nature of statistical calculations associated with double sampling methodology.

VOLUME			STATISTICAL RANGE IN CORDS	
TOTAL CUBIC FEET	TOTAL CORDS	PERCENT ERROR	MINIMUM	MAXIMUM
251,549	3,184	11.96%	2,803	3,565

VDU VOLUMES

A VDU is a Volume Determination Unit. Volumes and their associated statistics are calculated at the VDU level and summarized to the sale level. There is often a one to one relationship between a VDU and a Payment Unit, but not always, depending on the cruise design. Refer to the VDU TO PAYMENT UNIT table.

	VOLUME			RANGE IN CORDS	
VDU	TOTAL CUBIC FEET	TOTAL CORDS	PERCENT ERROR	MINIMUM	MAXIMUM
9	45,439	575	28.32%	412	738
19	8,942	113	53.82%	52	174
25	96,768	1,225	17.26%	1,014	1,436
94	18,588	235	38.87%	144	327
97	30,109	381	45.67%	207	555
119	43,287	548	34.97%	356	740
131	8,418	107	45.64%	58	155
TOTAL:	251,549	3,184		2,243	4,125

VDU TO PAYMENT UNIT

When a VDU is associated with more than one Payment Unit (PU), the VDU volumes are assigned to the PU based on acres of the VDU within the PU.

VDU	VDU ACRES	PU	PU ACRES
9	45.8	1	45.8
19	8.9	2	8.9
25	84.6	3	38.0
25	84.6	4	46.6
94	12.5	6	12.5
97	7.0	5	7.0
119	36.8	7	36.8
131	2.7	8	2.7
TOTAL:	282.9		198.3

DESCRIPTION OF TIMBER BY PU (PU)

PU	MARKET GROUP	PRODUCT	QUANTITY	UNIT	ACRES	ADVERTISE PRICE
1	Beech	Sawtimber	24.4	MBF	45.8	\$28,016.10
	Black Cherry		1.2	MBF		
	Red Maple		120.6	MBF		
	Sugar Maple		7.6	MBF		
	Mixed Hardwood	Pulpwood	215	Cords		
	<i>Beech</i>		44	<i>Cords</i>		
	<i>Black Cherry</i>		5	<i>Cords</i>		
	<i>Ironwood</i>		1	<i>Cords</i>		
	<i>Red Maple</i>		118	<i>Cords</i>		
	<i>Sugar Maple</i>		47	<i>Cords</i>		
2	Black Cherry	Sawtimber	13.2	MBF	8.9	\$4,651.40
	Mixed Aspen		0.6	MBF		
	<i>B. T. Aspen</i>		0.6	<i>MBF</i>		
	Red Maple		4.5	MBF		
	Mixed Aspen	Pulpwood	2	Cords		
	<i>B. T. Aspen</i>		2	<i>Cords</i>		
	Mixed Hardwood		46	Cords		
	<i>Black Cherry</i>		29	<i>Cords</i>		
	<i>Red Maple</i>		17	<i>Cords</i>		
	White Pine		22	Cords		
3	American Elm	Sawtimber	0.5	MBF	38.0	\$26,148.00
	Beech		18.1	MBF		
	Black Cherry		0.7	MBF		
	Mixed Aspen		6.6	MBF		
	<i>Quaking Aspen</i>		6.6	<i>MBF</i>		
	Red Maple		88.2	MBF		
	Sugar Maple		13.9	MBF		
	Mixed Aspen	Pulpwood	16	Cords		
	<i>Quaking Aspen</i>		16	<i>Cords</i>		
	Mixed Hardwood		235	Cords		
	<i>Beech</i>		62	<i>Cords</i>		
	<i>Black Cherry</i>		14	<i>Cords</i>		
	<i>Ironwood</i>		1	<i>Cords</i>		
	<i>Red Maple</i>		120	<i>Cords</i>		
	<i>Sugar Maple</i>		38	<i>Cords</i>		
4	American Elm	Sawtimber	0.6	MBF	46.6	\$32,025.70
	Beech		22.3	MBF		
	Black Cherry		0.8	MBF		
	Mixed Aspen		8.0	MBF		
	<i>Quaking Aspen</i>		8.0	<i>MBF</i>		
	Red Maple		108.1	MBF		
	Sugar Maple		17.0	MBF		
	Mixed Aspen	Pulpwood	19	Cords		
	<i>Quaking Aspen</i>		19	<i>Cords</i>		
	Mixed Hardwood		288	Cords		
	<i>American Elm</i>		1	<i>Cords</i>		
	<i>Beech</i>		75	<i>Cords</i>		
	<i>Black Cherry</i>		17	<i>Cords</i>		
	<i>Ironwood</i>		1	<i>Cords</i>		
	<i>Red Maple</i>		148	<i>Cords</i>		
	<i>Sugar Maple</i>		46	<i>Cords</i>		
5	Black Cherry	Sawtimber	2.8	MBF	7.0	\$14,852.40
	Mixed Aspen		91.6	MBF		
	<i>B. T. Aspen</i>		91.6	<i>MBF</i>		
	Mixed Aspen	Pulpwood	154	Cords		

DESCRIPTION OF TIMBER BY PU (PU), CON'T

PU	MARKET GROUP	PRODUCT	QUANTITY	UNIT	ACRES	ADVERTISE PRICE
5 con't	<i>B. T. Aspen</i>	<i>Pulpwood</i>	154	<i>Cords</i>		
	Mixed Hardwood		6	Cords		
	<i>Black Cherry</i>		6	<i>Cords</i>		
6	Basswood	Sawtimber	14.9	MBF	12.5	\$17,502.40
	Beech		6.8	MBF		
	Sugar Maple		35.4	MBF		
	Mixed Hardwood	Pulpwood	102	Cords		
	<i>Basswood</i>		7	<i>Cords</i>		
	<i>Beech</i>		41	<i>Cords</i>		
	<i>Black Cherry</i>		5	<i>Cords</i>		
	<i>Sugar Maple</i>		49	<i>Cords</i>		
7	Basswood	Sawtimber	46.9	MBF	36.8	\$27,372.60
	Beech		19.0	MBF		
	Mixed Aspen		20.0	MBF		
	<i>Quaking Aspen</i>		20.0	<i>MBF</i>		
	Red Maple		1.3	MBF		
	Red Oak		1.3	MBF		
	Sugar Maple		26.0	MBF		
	Mixed Aspen	Pulpwood	37	Cords		
	<i>Quaking Aspen</i>		37	<i>Cords</i>		
	Mixed Hardwood		235	Cords		
	<i>Basswood</i>		44	<i>Cords</i>		
	<i>Beech</i>		34	<i>Cords</i>		
	<i>Ironwood</i>		24	<i>Cords</i>		
	<i>Red Maple</i>		38	<i>Cords</i>		
	<i>Sugar Maple</i>		95	<i>Cords</i>		
	Red Oak		8	Cords		
8	Black Cherry	Sawtimber	1.6	MBF	2.7	\$4,191.60
	Mixed Aspen		9.8	MBF		
	<i>B. T. Aspen</i>		9.8	<i>MBF</i>		
	Sugar Maple		3.1	MBF		
	Mixed Aspen	Pulpwood	63	Cords		
	<i>B. T. Aspen</i>		63	<i>Cords</i>		
	Mixed Hardwood		10	Cords		
	<i>Black Cherry</i>		1	<i>Cords</i>		
	<i>Sugar Maple</i>		9	<i>Cords</i>		
TOTAL:			737.4	MBF		
TOTAL:			1,458	Cords		

Sale Specific Conditions & Requirements

Sale Name: Lollipop Hardwoods

Sale Number: 61-035-24 Seq#: 1

1 - Sale Area

1.2 - Boundaries

1.2.1 - Painted Boundaries (9/19)

The sale boundary and Payment Unit boundaries are marked and identified by red paint and roads. Exterior sale boundary lines against state are marked with red paint, with the exception of the northern Payment Unit boundaries for Payment Units 6 and 7, which are unpainted and designated by Fowler Road. Interior Payment Unit boundaries are marked with red paint. The painted boundary line trees are not Included Timber and are to be protected.

2 - Timber Specifications

2.1 - Included Timber

2.1.3 - Cut Tree Marked Unit(s) (12/08)

Within Payment Unit(s) 1-4, 6, and 7, all trees are designated for cutting when marked with orange paint above and below stump height, regardless of merchantability. In addition, within Payment Unit 2, all black cherry trees are designated for cutting, regardless of merchantability.

2.1.7 - Leave Tree Marked Unit(s) (6/14)

Within Payment Unit(s) 5 and 8, all aspen and cherry trees, which meet minimum piece specifications in 2.2 Utilization, are designated for cutting. In addition, do not cut any trees marked with green paint above and below stump height. Furthermore, all sub merchantable ironwood and beech may be cut as necessary for operation of logging equipment/harvest of designated timber but must be severed at ground level and laid flat on the ground; not just broken, bent, or pushed over. Finally, within Payment Unit 8, all maple trees, which meet minimum piece specifications in 2.2 Utilization, are designated for cutting.

2.2 - Utilization

2.2.6 - Roundwood Operation Required (3/21)

The skidding of whole trees or tree segments with limbs attached is prohibited within all Payment Units. All products must be produced as roundwood and forwarded to existing roads or landing areas in final product length.

4 - Transportation

4.1 - Construction

4.1.3 - Slash and Earthen Piles (8/04)

Piles or windrows of earth along roads and landings that have been widened or constructed shall be leveled. Slash from road maintenance or construction, including stumps, shall be dispersed throughout the sale as determined by the Sale Administrator.

4.1.12 - No New Roads (1/12)

No new roads will be permitted in any Payment Unit. All operations are limited to existing roads. Skid trails outside of the sale unit boundaries will only be allowed as agreed with the Sale Administrator.

4.2 - Maintenance

4.2.5 - Two Wheel Drive Condition (2/04)

All existing trail roads on and adjacent to the Sale Area must be passable by two-wheel drive traffic for the duration of the sale.

5 - Operations

5.2 - Conduct of Operations

5.2.1 - Slash

5.2.1.8 - Slash Height (12/08)

No slash or tree tops may exceed 24 inches in height. Slash should be evenly distributed as much as possible.

5.2.3 - Operating Restrictions

5.2.3.3 - Bark Slippage Restriction (3/09)

Within Payment Unit(s) 1-8, unless changed by written agreement with the Sale Administrator, cutting and skidding are not permitted during the period of April 15 to July 15. This restriction is because of bark slippage.

5.2.4 - Dead and Down Creation

5.2.4.4 - Dead and Down Creation, Grouse (6/18)

To encourage grouse and other wildlife, in Payment Unit(s) 5 and 8 leave one 12-inch or larger diameter (or largest diameter trees within stand) whole tree on the ground for every 2 acres, preferably a hardwood species such as maple. These trees will be evenly scattered throughout the unit, preferably at least 50 feet from any roads, two-tracks, or trails open to vehicles. This can be an unmerchantable piece or a full tree.

5.4 - Soil Protection

5.4.3 - Erosion Control (12/08)

Skid trails or haul roads may require erosion control structures or berms per direction of the Unit Manager or his/her representative.

5.4.4 - Slope Protection (9/19)

Skid trails and roads on slopes shall be water barred with slash, stumps, as soon as use is complete to prevent erosion.

6 - Safety and Fire Prevention

6.2 - Signing

6.2.3 - Recreational Trail Posting (10/20)

The Purchaser is responsible for posting and maintaining caution signs on the horse/hiking trail that is the forest road in Payment Unit 5 prior to beginning operations. The trail must be posted at appropriate distances from the Sale Area to warn of logging activity and truck traffic at both ends of the trail. Signs must be removed when harvest operations are suspended or completed. The Purchaser will provide these signs.

**TIMBER SALE MAP**

This information provided by authority of Part 525, 1994 PA 451, as amended.

Sale Number
61-035-24Date
09/16/2024

Forest Management Unit

County

Mapped By: Craig Allen

Scale

Page

Of

Traverse City Mgt Unit

Benzie

Cruised By: Contractors / Allen

1:15,840

1

2

Township

Range

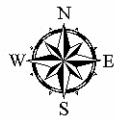
Section(s) and

N1/2NW,NWNE;
Subdivision(s) Sec. 1 NENW,S1/2NW,SWNE,SW,SWSE; Sec. 12 E1/2NW,NWNE; Sec. 13 NENW,NWNE; Sec. 18**Cover Type**

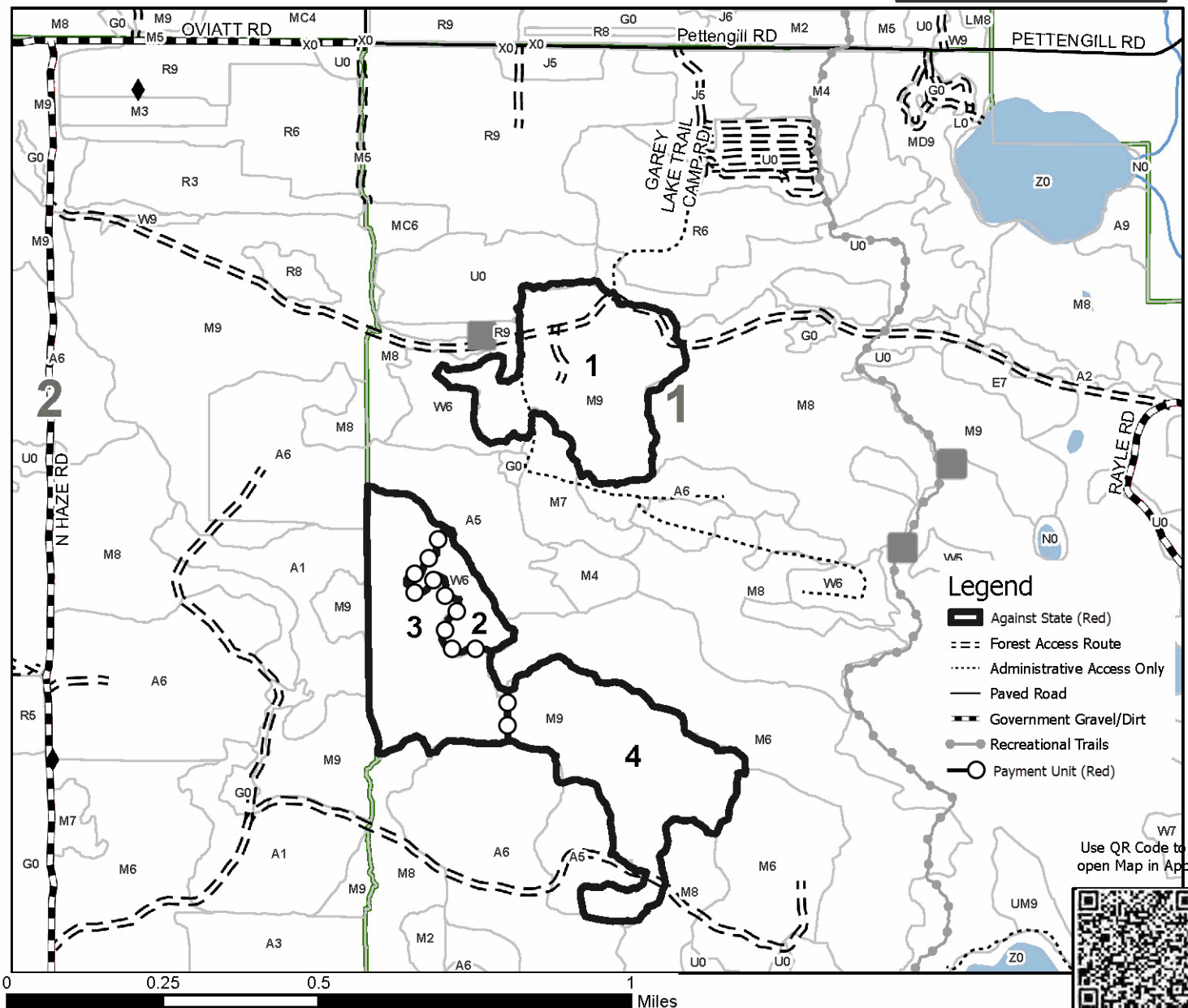
A = Aspen	J = Jack Pine	O = Oak	U = Upland Brush
B = Paper Birch	K = Rock	P = Lowland Poplar	UM = Upland Mix Forest
C = Cedar	L = Lowland Brush	Q = Mixed Swamp Conifer	V = Bog or Marsh
D = Treed Bog	LM = Lowland Mix Forest	R = Red Pine	W = White Pine
E = Swamp Hardwoods	M = Maple, Beech, Birch	S = Black Spruce	X = Non Stocked
F = Spruce/Fir	MC = Mixed Conifer	T = Tamarack	Y = Sand
G = Grass	MD = Mixed Deciduous		Z = Water
H = Hemlock	N = Marsh		

Density

0 = Non Stocked	5 = Pole Timber Medium
1 = Seedling Sapling Poor	6 = Pole Timber Well
2 = Seedling Sapling Medium	7 = Saw Timber Poor
3 = Seedling Sapling Well	8 = Saw Timber Medium
4 = Pole Timber Poor	9 = Saw Timber Well

**Lollipop
Hardwoods
198.3 Acres**

PU #	Acres	PU #	Acres
1	45.8	5	7
2	8.9	6	12.5
3	38	7	36.8
4	46.6	8	2.7





TIMBER SALE MAP

This information provided by authority of Part 525, 1994 PA 451, as amended.

Sale Number
61-035-24

Date
10/09/2024

Forest Management Unit

County

Mapped By: Craig Allen

Scale

Page

Of

Traverse City Mgt Unit

Benzie

Cruised By: Contractors / Allen

1:15,840

2

2

Township

Range

Section(s) and N1/2NW,NWNE;

Subdivision(s) Sec. 1 NENW,S1/2NW,SWNE,SW,SWSE; Sec. 12 E1/2NW,NWNE; Sec. 13 NENW,NWNE; Sec. 18

Cover Type

A = Aspen	J = Jack Pine	O = Oak	U = Upland Brush
B = Paper Birch	K = Rock	P = Lowland Poplar	UM = Upland Mix Forest
C = Cedar	L = Lowland Brush	Q = Mixed Swamp Conifer	V = Bog or Marsh
D = Treed Bog	LM = Lowland Mix Forest	R = Red Pine	W = White Pine
E = Swamp Hardwoods	M = Maple, Beech, Birch	S = Black Spruce	X = Non Stocked
F = Spruce/Fir	MC = Mixed Conifer	T = Tamarack	Y = Sand
G = Grass	MD = Mixed Deciduous		Z = Water
H = Hemlock	N = Marsh		

Density

0 = Non Stocked	5 = Pole Timber Medium
1 = Seedling Sapling Poor	6 = Pole Timber Well
2 = Seedling Sapling Medium	7 = Saw Timber Poor
3 = Seedling Sapling Well	8 = Saw Timber Medium
4 = Pole Timber Poor	9 = Saw Timber Well

PU # Acres PU # Acres

1	45.8	5	7
2	8.9	6	12.5
3	38	7	36.8
4	46.6	8	2.7



Lollipop Hardwoods 198.3 Acres

