



**DEPARTMENT OF NATURAL RESOURCES
STATE OF MICHIGAN
TIMBER SALE PROSPECTUS #7502**

SCHEDULED SALE DATE AND TIME: 10:00 a.m. (local time) on October 28, 2024.

LOCATION: SAULT DNR CUSTOMER SERVICE CENTER, 4131 S. M-129, SAULT STE MARIE, MI 49783.

CONTACT NAME: Kenny Fanelli

PHONE NUMBER: (906) 287-1380

PROSPECTUS NOTE: The bidder is advised to inspect the sale area and review the location, estimated volumes, operating costs and contract terms of proposed sales. Please be aware that some landowners may request 60 days or more notice for access across their land.

Notice is hereby given that bids will be received by the Unit Manager, SAULT STE MARIE MANAGEMENT UNIT, for certain timber on the following described lands:

Clear the Way (45-008-24) / T43N, R01W, SEC. 19, NENE.

T43N, R01W, SEC. 20, NWNW, S1/2NW, S1/2NE.

T43N, R01W, SEC. 27, NWNW.

T43N, R01W, SEC. 28, E1/2NE.

Mackinac County, Advertised Price \$16,994.75, 83.8 Acres, Aspen, Spruce/Fir/Tamarack.

SALE NOTE: Private property access to Payment Units 3 & 4. Permission to operate through private property is required to bid on this sale.

Access may be through private land.

TIMBER SALE INFORMATION

Clear the Way (45-008-24)

T43N, R01W, SEC. 19; T43N, R01W, SEC. 20; T43N, R01W, SEC. 27; T43N, R01W, SEC. 28.

Mackinac County (Advertised Price \$16,994.75)

SALE NOTE: Private property access to Payment Units 3 & 4. Permission to operate through private property is required to bid on this sale.

Access may be through private land.

A timber sale contract for this lump sum, sealed bid timber sale will be awarded to the responsible bidder offering the highest sealed bid price. All units of volume listed below were estimated using the Inventory Manager computer program and the new Michigan taper model. Bids must be at or above the following advertised price for each product and species:

<u>PRODUCTS & SPECIES</u>	<u>ESTIMATED UNITS*</u>	<u>ADVERTISED PRICE</u>
Sawtimber		
Red Maple	12.3 MBF	\$ 70.00 / MBF
Pulpwood		
Balsam Fir	198 Cords	\$ 6.15 / Cord
Balsam Poplar	186 Cords	\$ 13.75 / Cord
Mixed Aspen	707 Cords	\$ 13.75 / Cord
Mixed Hardwood	129 Cords	\$ 10.40 / Cord
Mixed Spruce	85 Cords	\$ 3.50 / Cord
N. White Cedar	217 Cords	\$ 4.60 / Cord

* The total volume is statistically estimated within plus (+) or minus (-) 15.76 percent. There are an estimated 1,553 cords on this timber sale, plus or minus 245 cords at the 95% confidence level. The estimated units are final and not subject to adjustment. Prospective bidders are urged to examine this timber and to make their own estimates of quantity and quality.

BOND AND PAYMENT SCHEDULE:

1. A bond in the amount of \$1,359.58 to insure faithful performance of the conditions of the contract will be deposited by the successful bidder within 21 days of the sale award.
2. Cutting in any sale or unit without the required advance payment would be considered a trespass.
3. Total payment must be paid in advance or according to the following schedule:
 - (a) Ten percent (10%) of the sale value must be paid within 21 days of the sale award.
 - (b) The 10% down payment will be credited towards the first unit cut.
 - (c) Payment for each of the following units must be made before cutting begins in that unit:

PAYMENT UNIT NUMBER	PERCENT OF TOTAL SALE VALUE
01	29.9%
02	15.3%
03	19.2%
04	35.6%
4. If no cutting takes place, the 10% down payment will not be refunded.
5. Operations on the contract issued will terminate on 06/30/2028.

SALE STATISTICS

Volumes were calculated in cubic feet using the Michigan taper model. Cubic foot volume includes all wood inside bark for the product indicated. For display purposes, cubic feet were converted to cords and MBF using a simple conversion factor, e.g. 79 cubic feet per cord and 185 cubic feet per MBF. The cubic foot volumes are precise; the cords and MBF volumes are not. Cubic foot volume cannot be directly converted to cords or boards with precision.

SALE VOLUMES

The total estimated sale volume may not equal the sum of the species/products due to the nature of statistical calculations associated with double sampling methodology.

VOLUME		PERCENT ERROR	STATISTICAL RANGE IN CORDS	
TOTAL CUBIC FEET	TOTAL CORDS		MINIMUM	MAXIMUM
122,704	1,553	15.76%	1,308	1,798

VDU VOLUMES

A VDU is a Volume Determination Unit. Volumes and their associated statistics are calculated at the VDU level and summarized to the sale level. There is often a one to one relationship between a VDU and a Payment Unit, but not always, depending on the cruise design. Refer to the VDU TO PAYMENT UNIT table.

	VOLUME			RANGE IN CORDS	
VDU	TOTAL CUBIC FEET	TOTAL CORDS	PERCENT ERROR	MINIMUM	MAXIMUM
10	39,907	505	32.92%	339	671
23	23,233	294	29.52%	207	381
52	19,911	252	30.02%	176	328
53	39,652	502	28.66%	358	646
TOTAL:	122,704	1,553		1,081	2,026

VDU TO PAYMENT UNIT

When a VDU is associated with more than one Payment Unit (PU), the VDU volumes are assigned to the PU based on acres of the VDU within the PU.

VDU	VDU ACRES	PU	PU ACRES
10	27.0	4	27.0
23	21.8	3	21.8
52	16.5	2	16.5
53	18.5	1	18.5
TOTAL:	83.8		83.8

DESCRIPTION OF TIMBER BY PU (PU)

PU	MARKET GROUP	PRODUCT	QUANTITY	UNIT	ACRES	ADVERTISE PRICE
1	Red Maple	Sawtimber	3.0	MBF	18.5	\$5,076.90
	Balsam Fir	Pulpwood	58	Cords		
	Balsam Poplar		40	Cords		
	Mixed Aspen		212	Cords		
	B. T. Aspen		20	Cords		
	Quaking Aspen		192	Cords		
	Mixed Hardwood		35	Cords		
	American Elm		7	Cords		
	Green Ash		10	Cords		
	Red Maple		15	Cords		
	Junberry (Juneberry)		1	Cords		
	Sugar Maple		2	Cords		
	Mixed Spruce		8	Cords		
	Black Spruce		4	Cords		
	White Spruce		4	Cords		
	N. White Cedar		142	Cords		
2	Red Maple	Sawtimber	8.0	MBF	16.5	\$2,599.30
	Balsam Fir	Pulpwood	17	Cords		
	Balsam Poplar		18	Cords		
	Mixed Aspen		59	Cords		
	B. T. Aspen		24	Cords		
	Quaking Aspen		35	Cords		
	Mixed Hardwood		45	Cords		
	Paper Birch		13	Cords		
	Red Maple		29	Cords		
	White Ash		3	Cords		
	Mixed Spruce		18	Cords		
	White Spruce		18	Cords		
	N. White Cedar		75	Cords		
	3	Red Maple	Sawtimber	0.7		
Balsam Fir		Pulpwood	75	Cords		
Balsam Poplar			35	Cords		
Mixed Aspen			153	Cords		
Quaking Aspen			153	Cords		
Mixed Hardwood			10	Cords		
Green Ash			5	Cords		
Paper Birch			2	Cords		
Red Maple			3	Cords		
Mixed Spruce			19	Cords		
White Spruce			19	Cords		
4		Red Maple	Sawtimber	0.6	MBF	27.0
	Balsam Fir	Pulpwood	48	Cords		
	Balsam Poplar		93	Cords		
	Mixed Aspen		283	Cords		
	Quaking Aspen		283	Cords		
	Mixed Hardwood		39	Cords		
	Green Ash		8	Cords		
	Paper Birch		26	Cords		
	Red Maple		3	Cords		
	White Ash		2	Cords		
	Mixed Spruce		40	Cords		
	White Spruce		40	Cords		
	TOTAL:			12.3	MBF	
TOTAL:			1,522	Cords		

Sale Specific Conditions & Requirements

Sale Name: Clear the Way

Sale Number: 45-008-24 Seq#: 1

1 - Sale Area

1.2 - Boundaries

1.2.1 - Painted boundaries (9/19)

The sale boundary and Payment Unit boundaries are marked and identified by blue and red paint. Exterior sale boundary lines against private property are marked with blue paint. Exterior sale boundary lines against state are marked with red paint. Retention patches are marked with red paint; no harvesting activities may occur within these areas. The painted boundary line trees are not Included Timber and are to be protected.

2 - Timber Specifications

2.1 - Included Timber

2.1.1 - Clearcut unit(s) with unmerchantable trees (6/14)

Within Payment Unit(s) 1-4, cut all trees that are two (2) inches or more at DBH. Within Payment Unit 1, do not cut pine, sugar maple, hemlock, oak, or yellow birch. Within Payment Unit 2, do not cut pine. Within Payment Units 3 and 4, do not cut pine, cedar, hemlock, oak, or yellow birch.

4 - Transportation

4.1 - Construction

4.1.2 - Stream crossings, specific (3/11)

There is a creek that runs between portions of Payment Unit 2 as shown on the Timber Sale Map. Crossing this will require the installation of a culvert, portable bridge, or crane mat which may be borrowed from the DNR. A ninety (90) day notice will be given to the DNR before operations begin. This installation will be performed in accordance with the specifications on the appropriate permits which shall be provided by the DNR.

4.1.6 - Road construction (4/24)

Construction of new roads or improvements of existing roads shall be done in such a way as to minimize the environmental and visual impacts. Merchantable trees shall be cut and utilized unless otherwise directed. Non-merchantable trees shall be severed and laid flat on the ground. Slash shall be scattered, and not left in windrows and kept a minimum of 10 feet back from the road edge. Stumps shall be set upright, not left on edge, and be moved at least 10 feet away from the road edge. Disturbed soil shall be feathered into the woods and not left in berms or windrows.

4.1.7 - Road closure (10/11)

All new roads built into the sale must be blocked to vehicle traffic upon completion of the sale. Overgrown roads that are reopened shall be considered new roads. In general, this will require constructing double earthen berms at strategic locations. These roads must be rendered impassable to cars and trucks. All stumps from road building and landing construction must be reserved to block any newly constructed roads upon completion of the sale. These stumps must be scattered along the road system to prohibit vehicular movement. Contact the Sale Administrator for specific details of design and placement.

4.4 - Access

4.4.1 - Private property access (3/11)

Permission for access across private land is the responsibility of the Purchaser. Should the Purchaser desire to cross private land, a copy of the written permission from the private landowner may be required by the DNR. A copy of the written permission from the private landowner must be given to the Unit Manager prior to the beginning of operations.

5 - Operations

5.2 - Conduct of Operations

5.2.1 - Slash

5.2.1.8 - Slash height (12/08)

No slash or tree tops may exceed 24 inches in height.

5.2.2 - Hazard Trees/Snags

5.2.2.1 - Den trees (10/16)

Obvious hollow and/or den trees shall be protected and left standing unless they are a safety hazard.

5.2.3 - Operating Restrictions

5.2.3.1 - Operating restrictions (9/11)

Within Payment Unit(s) 1 and 2, unless changed by written agreement, cutting, skidding, and hauling are limited to the period of December 1 to March 31. This restriction is because of the Deer Wintering Complex.

5.2.4 - Dead and Down Creation

5.2.4.3 - Dead and down creation, dead trees (6/07)

Except as provided for in General Condition and Requirement 5.2.2, no dead trees, standing or down, are to be cut, skidded, or processed.

5.2.37 - No decking areas (12/08)

No decking is allowed within 50 feet of North 3 Mile Road, without permission of the Unit Manager or his/her representative.

5.4 - Soil Protection

5.4.1 - Rutting restriction, general (7/16)

Operations are to cease immediately if equipment and weather conditions result in rutting on skid trails or roads which is 12 inches or greater in depth and 50 feet in length. The Unit Manager or his/her representative may restrict hauling and/or skidding if ruts exceed the specified depth. With the Unit Manager or his/her representative's approval, the Purchaser may return to the area when the risk of rutting has decreased.

5.8 - Protection of Endangered Species

5.8.5 - Protection of raptor nests (3/13)

All trees with raptor nests will be protected if found during harvesting operations. Notification will be made to the Unit Manager or his/her representative who will notify the Wildlife Biologist so an on-site evaluation and recommendation can be made, if necessary.

6 - Safety and Fire Prevention

6.2 - Signing

6.2.1 - Road posting (10/20)

The Purchaser is responsible for posting and maintaining caution signs on North 3 Mile Road prior to beginning operations. The road must be posted at appropriate distances from the Sale Area to warn of logging activity and truck traffic. Signs must be removed when harvest operations are suspended or completed. The Purchaser will provide these signs.



TIMBER SALE MAP

This information provided by authority of Part 525, 1994 PA 451, as amended.

Sale Number
45-008-24

Date
08/28/2024

Forest Management Unit
Sault Ste Marie Mgt Unit

County
Mackinac

Mapped By: Louis Radecki

Cruised By: Louis Radecki

Scale
1:15,840

Page
1

Of
2

Township 43N Range 01W Section(s) and Subdivision(s) Sec. 19 NENE; Sec. 20 NWNW,S1/2NW,S1/2NE; Sec. 27 NWNW; Sec. 28 E1/2NE;

Cover Type

A = Aspen	J = Jack Pine	O = Oak	U = Upland Brush
B = Paper Birch	K = Rock	P = Lowland Poplar	UM = Upland Mix Forest
C = Cedar	L = Lowland Brush	Q = Mixed Swamp Conifer	V = Bog or Marsh
D = Treed Bog	LM = Lowland Mix Forest	R = Red Pine	W = White Pine
E = Swamp Hardwoods	M = Maple, Beech, Birch	S = Black Spruce	X = Non Stocked
F = Spruce/Fir	MC = Mixed Conifer	T = Tamarack	Y = Sand
G = Grass	MD = Mixed Deciduous		Z = Water
H = Hemlock	N = Marsh		

Density

0 = Non Stocked	5 = Pole Timber Medium
1 = Seedling Sapling Poor	6 = Pole Timber Well
2 = Seedling Sapling Medium	7 = Saw Timber Poor
3 = Seedling Sapling Well	8 = Saw Timber Medium
4 = Pole Timber Poor	9 = Saw Timber Well

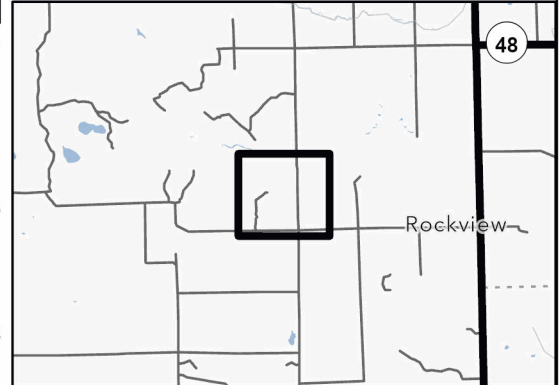
PU # Acres

1	18.5
2	16.5
3	21.8
4	27

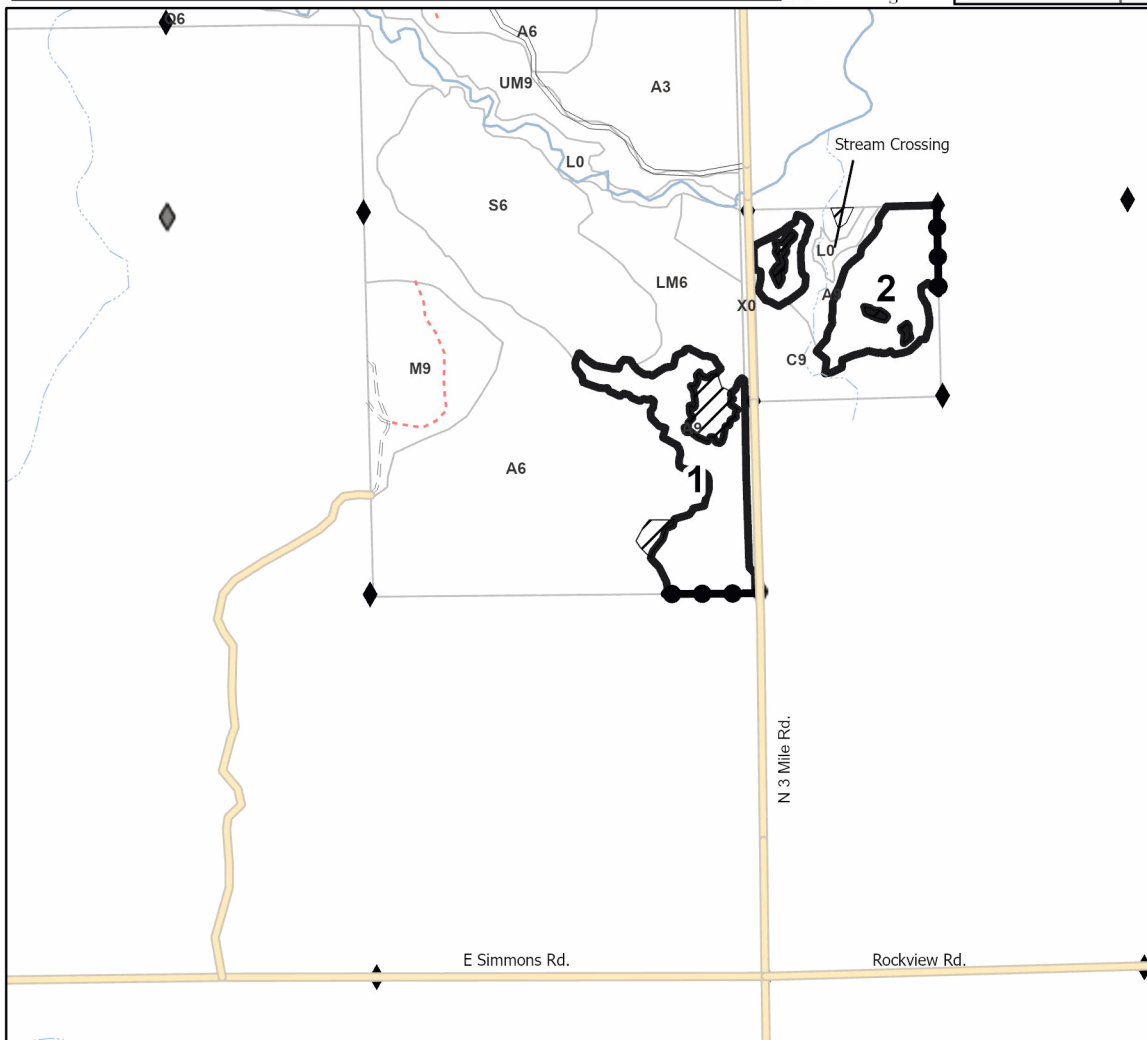
Clear the Way

83.8 Acres

Locator Map (1:200,000)



0 0.25 0.5 1 Miles



Legend

- Against State (Red)
- Private Line (Blue)
- Stand
- Retention Areas
- Secondary Forest Road
- Forest Access Route
- Administrative Access Only
- Non-DNR Road
- Field Grade Corner
- Survey Grade Corner

Use QR Code to open Map in App





Michigan Department of Natural Resources - Forest Resources Division

TIMBER SALE MAP

This information provided by authority of Part 525, 1994 PA 451, as amended.

Sale Number

45-008-24

Date

08/28/2024

Forest Management Unit

Sault Ste Marie Mgt Unit

County

Mackinac

Mapped By: Louis Radecki

Cruised By: Louis Radecki

Scale

1:24,000

Page

2

Of

2

Township
43N

Range
01W

Section(s) and
Subdivision(s)

Sec. 19 NENE; Sec. 20 NWNW,S1/2NW,S1/2NE; Sec. 27 NWNW; Sec. 28 E1/2NE;

Cover Type

A = Aspen	J = Jack Pine	O = Oak	U = Upland Brush
B = Paper Birch	K = Rock	P = Lowland Poplar	UM = Upland Mix Forest
C = Cedar	L = Lowland Brush	Q = Mixed Swamp Conifer	V = Bog or Marsh
D = Treed Bog	LM = Lowland Mix Forest	R = Red Pine	W = White Pine
E = Swamp Hardwoods	M = Maple, Beech, Birch	S = Black Spruce	X = Non Stocked
F = Spruce/Fir	MC = Mixed Conifer	T = Tamarack	Y = Sand
G = Grass	MD = Mixed Deciduous		Z = Water
H = Hemlock	N = Marsh		

Density

0 = Non Stocked	5 = Pole Timber Medium
1 = Seedling Sapling Poor	6 = Pole Timber Well
2 = Seedling Sapling Medium	7 = Saw Timber Poor
3 = Seedling Sapling Well	8 = Saw Timber Medium
4 = Pole Timber Poor	9 = Saw Timber Well

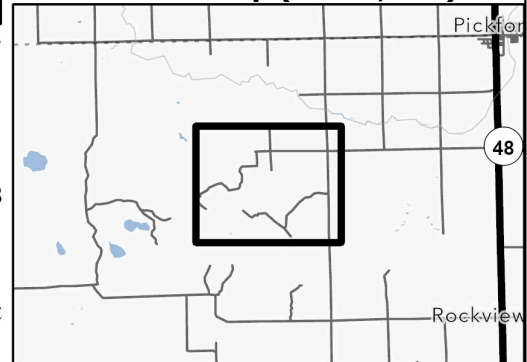
PU # Acres

1	18.5
2	16.5
3	21.8
4	27

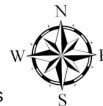
Clear the Way

83.8 Acres

Locator Map (1:200,000)



0 0.38 0.75 1.5 Miles



Legend

- Against State (Red)
- Stand
- Retention Areas
- Private Line (Blue)
- Field Grade Corner
- Survey Grade Corner

Access PU 4 through private road from the north.

Access PU 3 through private gate here.

N 3 Mile Rd.

Use QR Code to open Map in App

