



**DEPARTMENT OF NATURAL RESOURCES  
STATE OF MICHIGAN  
TIMBER SALE PROSPECTUS #7538**

SCHEDULED SALE DATE AND TIME: **12:00 p.m. (local time) on December 18, 2024.**

LOCATION: **ESCANABA MGMT UNIT, 6833 HWY'S 2, 41 & M-35, GLADSTONE, MI 49837.**

CONTACT NAME: Daniel Racine

PHONE NUMBER: (906) 789-8231

PROSPECTUS NOTE: The bidder is advised to inspect the sale area and review the location, estimated volumes, operating costs and contract terms of proposed sales. Please be aware that some landowners may request 60 days or more notice for access across their land.

Notice is hereby given that bids will be received by the Unit Manager, ESCANABA MANAGEMENT UNIT, for certain timber on the following described lands:

Skidmore Beaver (33-031-24) / T41N, R26W, SEC. 10, S1/2NW,N1/2SW,SWSW.

T41N, R26W, SEC. 15, NWNW.

T41N, R26W, SEC. 16, W1/2NE.

T41N, R26W, SEC. 2 , NWNW.

T41N, R26W, SEC. 3 , SWSW.

Menominee County, Advertised Price \$72,463.10, 124.4 Acres, Aspen, Spruce/Fir/Tamarack.

SALE NOTE: Access may be through private land.

## TIMBER SALE INFORMATION

Skidmore Beaver (33-031-24)

T41N, R26W, SEC. 10; T41N, R26W, SEC. 15; T41N, R26W, SEC. 16; T41N, R26W, SEC. 2; T41N, R26W, SEC. 3.  
Menominee County (Advertised Price \$72,463.10)

SALE NOTE: Access may be through private land.

A timber sale contract for this lump sum, sealed bid timber sale will be awarded to the responsible bidder offering the highest sealed bid price. All units of volume listed below were estimated using the Inventory Manager computer program and the new Michigan taper model. Bids must be at or above the following advertised price for each product and species:

<u>PRODUCTS &amp; SPECIES</u>	<u>ESTIMATED UNITS*</u>	<u>ADVERTISED PRICE</u>
Sawtimber		
Sugar Maple	31.1 MBF	\$ 175.00 / MBF
Pulpwood		
Balsam Fir	149 Cords	\$ 7.75 / Cord
Basswood	5 Cords	\$ 8.75 / Cord
Mixed Aspen	1,906 Cords	\$ 25.80 / Cord
Mixed Hardwood	318 Cords	\$ 14.95 / Cord
Mixed Spruce	221 Cords	\$ 15.75 / Cord
N. White Cedar	47 Cords	\$ 5.65 / Cord
Tamarack	634 Cords	\$ 12.85 / Cord

\* The total volume is statistically estimated within plus (+) or minus (-) 13.36 percent. There are an estimated 3,356 cords on this timber sale, plus or minus 449 cords at the 95% confidence level. The estimated units are final and not subject to adjustment. Prospective bidders are urged to examine this timber and to make their own estimates of quantity and quality.

### **BOND AND PAYMENT SCHEDULE:**

1. A bond in the amount of \$5,797.05 to insure faithful performance of the conditions of the contract will be deposited by the successful bidder within 21 days of the sale award.
2. Cutting in any sale or unit without the required advance payment would be considered a trespass.
3. Total payment must be paid in advance or according to the following schedule :
  - (a) Ten percent (10%) of the sale value must be paid within 21 days of the sale award.
  - (b) The 10% down payment will be credited towards the first unit cut.
  - (c) Payment for each of the following units must be made before cutting begins in that unit:
 

PAYMENT UNIT NUMBER	PERCENT OF TOTAL SALE VALUE
01	8.5%
02	10.1%
03	47.7%
04	18.0%
05	15.7%
4. If no cutting takes place, the 10% down payment will not be refunded.
5. Operations on the contract issued will terminate on 06/30/2028.

### **SALE STATISTICS**

Volumes were calculated in cubic feet using the Michigan taper model. Cubic foot volume includes all wood inside bark for the product indicated. For display purposes, cubic feet were converted to cords and MBF using a simple conversion factor, e.g. 79 cubic feet per cord and 185 cubic feet per MBF. The cubic foot volumes are precise; the cords and MBF volumes are not. Cubic foot volume cannot be directly converted to cords or boards with precision.

### **SALE VOLUMES**

The total estimated sale volume may not equal the sum of the species/products due to the nature of statistical calculations associated with double sampling methodology.

VOLUME		STATISTICAL RANGE IN CORDS		
TOTAL CUBIC FEET	TOTAL CORDS	PERCENT ERROR	MINIMUM	MAXIMUM
265,125	3,356	13.36%	2,907	3,805

**VDU VOLUMES**

A VDU is a Volume Determination Unit. Volumes and their associated statistics are calculated at the VDU level and summarized to the sale level. There is often a one to one relationship between a VDU and a Payment Unit, but not always, depending on the cruise design. Refer to the VDU TO PAYMENT UNIT table.

VDU	VOLUME		PERCENT ERROR	RANGE IN CORDS	
	TOTAL CUBIC FEET	TOTAL CORDS		MINIMUM	MAXIMUM
1	26,491	335	49.63%	169	502
15	163,978	2,076	17.92%	1,704	2,448
30	63,213	800	23.65%	611	989
77	11,443	145	53.78%	67	223
<b>TOTAL:</b>	<b>265,125</b>	<b>3,356</b>		<b>2,551</b>	<b>4,161</b>

**VDU TO PAYMENT UNIT**

When a VDU is associated with more than one Payment Unit (PU), the VDU volumes are assigned to the PU based on acres of the VDU within the PU.

VDU	VDU ACRES	PU	PU ACRES
1	14.7	2	14.7
15	63.5	3	46.1
		4	17.4
30	36.3	5	36.3
77	9.9	1	9.9
<b>TOTAL:</b>	<b>124.4</b>		<b>124.4</b>

**DESCRIPTION OF TIMBER BY PU (PU)**

PU	MARKET GROUP	PRODUCT	QUANTITY	UNIT	ACRES	ADVERTISE PRICE				
1	Sugar Maple	Sawtimber	28.8	MBF	9.9	\$6,160.15				
	Basswood	Pulpwood	5	Cords						
	<i>Basswood</i>	<i>Sawtimber</i>	1.8	<i>MBF</i>						
	<i>Basswood</i>	<i>Pulpwood</i>	1	<i>Cords</i>						
	Mixed Hardwood		72	Cords						
	<i>Paper Birch</i>	<i>Sawtimber</i>	1.1	<i>MBF</i>						
	<i>Ironwood</i>	<i>Pulpwood</i>	7	<i>Cords</i>						
	<i>Paper Birch</i>		2	<i>Cords</i>						
	<i>Sugar Maple</i>		61	<i>Cords</i>						
	2	Balsam Fir	Pulpwood	14			Cords	14.7	\$7,307.25	
Mixed Aspen		217		Cords						
<i>B. T. Aspen</i>		4		<i>Cords</i>						
<i>Quaking Aspen</i>		213		<i>Cords</i>						
Mixed Hardwood		9		Cords						
<i>Balsam Poplar</i>		7		<i>Cords</i>						
<i>Black Cherry</i>		2		<i>Cords</i>						
Mixed Spruce		80		Cords						
<i>Black Spruce</i>		75		<i>Cords</i>						
<i>White Spruce</i>		5		<i>Cords</i>						
Tamarack		16		Cords						
3		Sugar Maple		Sawtimber	1.7	MBF	46.1			\$34,582.50
		Balsam Fir		Pulpwood	98	Cords				
	Mixed Aspen		1,185	Cords						
	<i>Quaking Aspen</i>		1,185	<i>Cords</i>						
	Mixed Hardwood		172	Cords						
	<i>Balsam Poplar</i>		56	<i>Cords</i>						
	<i>Black Cherry</i>		6	<i>Cords</i>						
	<i>Ironwood</i>		7	<i>Cords</i>						
	<i>Paper Birch</i>		8	<i>Cords</i>						
	<i>Red Maple</i>		15	<i>Cords</i>						
	<i>Sugar Maple</i>		57	<i>Cords</i>						
	<i>Yellow Birch</i>		23	<i>Cords</i>						
	Mixed Spruce		12	Cords						
	<i>Black Spruce</i>		8	<i>Cords</i>						
	<i>White Spruce</i>		4	<i>Cords</i>						
	N. White Cedar		34	Cords						
	4	Sugar Maple	Sawtimber	0.6	MBF	17.4		\$13,048.30		
Balsam Fir		Pulpwood	37	Cords						
Mixed Aspen			447	Cords						
<i>Quaking Aspen</i>			447	<i>Cords</i>						
Mixed Hardwood			65	Cords						
<i>Balsam Poplar</i>			21	<i>Cords</i>						
<i>Black Cherry</i>			2	<i>Cords</i>						
<i>Ironwood</i>			3	<i>Cords</i>						
<i>Paper Birch</i>			3	<i>Cords</i>						
<i>Red Maple</i>			6	<i>Cords</i>						
<i>Sugar Maple</i>			22	<i>Cords</i>						
<i>Yellow Birch</i>			8	<i>Cords</i>						
Mixed Spruce			5	Cords						
<i>Black Spruce</i>			3	<i>Cords</i>						
<i>White Spruce</i>			2	<i>Cords</i>						
N. White Cedar			13	Cords						
5	Mixed Aspen	Pulpwood	57	Cords	36.3	\$11,364.90				
	<i>B. T. Aspen</i>		14	<i>Cords</i>						
	<i>Quaking Aspen</i>		43	<i>Cords</i>						

**DESCRIPTION OF TIMBER BY PU (PU), CON'T**

PU	MARKET GROUP	PRODUCT	QUANTITY	UNIT	ACRES	ADVERTISE PRICE
5 con't	Mixed Spruce	Pulpwood	124	Cords		
	<i>Black Spruce</i>		124	<i>Cords</i>		
	Tamarack		618	Cords		
TOTAL:			31.1	MBF		
TOTAL:			3,280	Cords		

## Sale Specific Conditions & Requirements

Sale Name: Skidmore Beaver

Sale Number: 33-031-24 Seq#: 1

### 1 - Sale Area

#### 1.2 - Boundaries

##### 1.2.1 - Painted boundaries (9/19)

The sale boundary and Payment Unit boundaries are marked and identified by blue and red paint. Exterior sale boundary lines against private property are marked with blue paint. Exterior sale boundary lines against state are marked with red paint. The painted boundary line trees are not Included Timber and are to be protected unless marked with orange paint.

### 2 - Timber Specifications

#### 2.1 - Included Timber

##### 2.1.1 - Clearcut unit(s) with unmerchantable trees (6/14)

Within Payment Unit(s) 2-5, cut all trees that are three (3) inches or more at DBH, except:

Within Payment Unit 2, do not cut hemlock, cedar, pine, or cherry.

Within Payment Units 3 and 4, do not cut pine or trees marked in green paint.

Within Payment Unit 5, do not cut hemlock, cedar, or pine.

##### 2.1.3 - Cut tree marked unit(s) (12/08)

Within Payment Unit(s) 1, all trees are designated for cutting when marked with orange paint above and below stump height, regardless of merchantability.

### 3 - Payments

#### 3.3 - Pre-measured Sales

##### 3.3.4 - Dividing payment units (7/14)

Payment Unit(s) \$18,000 or more may be divided at the request of the Purchaser and upon approval of the Unit Manager.

Dividing Payment Units is a contract modification which requires a Timber Sale Contract Amendment. There will be only one division per Payment Unit.

### 4 - Transportation

#### 4.1 - Construction

##### 4.1.6 - Road construction (4/24)

Construction of new roads or improvements of existing roads shall be done in such a way as to minimize the environmental and visual impacts. Merchantable trees shall be cut and utilized unless otherwise directed. Non-merchantable trees shall be severed and laid flat on the ground. Slash shall be scattered, and not left in windrows and kept a minimum of 10 feet back from the road edge. Stumps shall be set upright, not left on edge, and be moved at least 10 feet away from the road edge. Disturbed soil shall be feathered into the woods and not left in berms or windrows.

##### 4.1.7 - Road closure (10/11)

All new roads built into the sale must be blocked to vehicle traffic upon completion of the sale. Overgrown roads that are reopened shall be considered new roads. In general, this will require constructing a four (4') foot high berm of stumps and logs covered with earth. These roads must be rendered impassable to cars and trucks. Temporary berms may be required if no sale activity occurs for 30 or more consecutive days. Contact the Sale Administrator for specific details of design and placement.

#### 4.2 - Maintenance

##### 4.2.1 - Hauling restriction (12/08)

Hauling may be restricted on forest roads by the Unit Manager or his/her representative. The restriction may occur during

spring breakup or prolonged wet weather conditions.

#### 4.2.4 - Grading (10/16)

For completion of the sale, state forest roads must be graded. In general, this will require a road grader or bulldozer to shape up the roads after forest products have been hauled off site. This includes cleaning of drainage areas, grading, crowning and filling with gravel, if necessary. The grading equipment to be used must be approved by the Unit Manager or his/her representative.

#### 4.4 - Access

##### 4.4.1 - Private property access (3/11)

Permission for access across private land is the responsibility of the Purchaser.

### 5 - Operations

#### 5.2 - Conduct of Operations

##### 5.2.3 - Operating Restrictions

###### 5.2.3.1 - Operating restrictions (9/11)

Within Payment Unit(s) 5, cutting and skidding are limited to frozen ground or very dry summer conditions. This restriction is because of the organic soils.

###### 5.2.3.3 - Bark slippage restriction (3/09)

Within Payment Unit(s) 1, unless changed by written agreement, cutting and skidding are not permitted during the period of April 15 to July 15. This restriction is because of bark slippage.

##### 5.2.32 - Decking/landing restoration (9/13)

All decking and landing areas must have the surface area restored to a condition equal to or better than before. This is to ensure the proper regeneration of the stand. Wood debris, chips and "cookies" from trimmings must be removed or scattered away from landing and loading areas and may not be windrowed on the edge.

##### 5.2.38 - No decking against live trees (2/04)

Cut products may not be decked against unmarked or designated leave trees.

#### 5.4 - Soil Protection

##### 5.4.1 - Rutting restriction, general (7/16)

Operations are to cease immediately if equipment and weather conditions result in rutting of roads and/or skid trails which is 12 inches or greater in depth and 50 feet in length. The Unit Manager or his/her representative may restrict hauling and/or skidding if ruts exceed the specified depth. With the Unit Manager or his/her representative's approval, the Purchaser may return to the area when the risk of rutting has decreased.

#### 5.8 - Protection of Endangered Species

##### 5.8.5 - Protection of raptor nests (3/13)

All trees with raptor nests will be protected if found during harvesting operations. Notification will be made to the Unit Manager or his/her representative who will notify the Wildlife Biologist so an on-site evaluation and recommendation can be made, if necessary.

### 6 - Safety and Fire Prevention

#### 6.2 - Signing

##### 6.2.1 - Road posting (10/20)

The Purchaser is responsible for posting and maintaining caution signs on the haul route prior to beginning operations. The road must be posted at appropriate distances from the Sale Area to warn of logging activity and truck traffic. Signs must be removed when harvest operations are suspended or completed. The Purchaser will provide these signs.



**TIMBER SALE MAP**

This information provided by authority of Part 525, 1994 PA 451, as amended.

Sale Number  
**33-031-24**

Date  
**09/25/2024**

Forest Management Unit	County	Mapped By: Dan Racine
Escanaba Mgt Unit	Menominee	Cruised By: Dickinson Co. crew

Scale	Page	Of
1:31,680	1	1

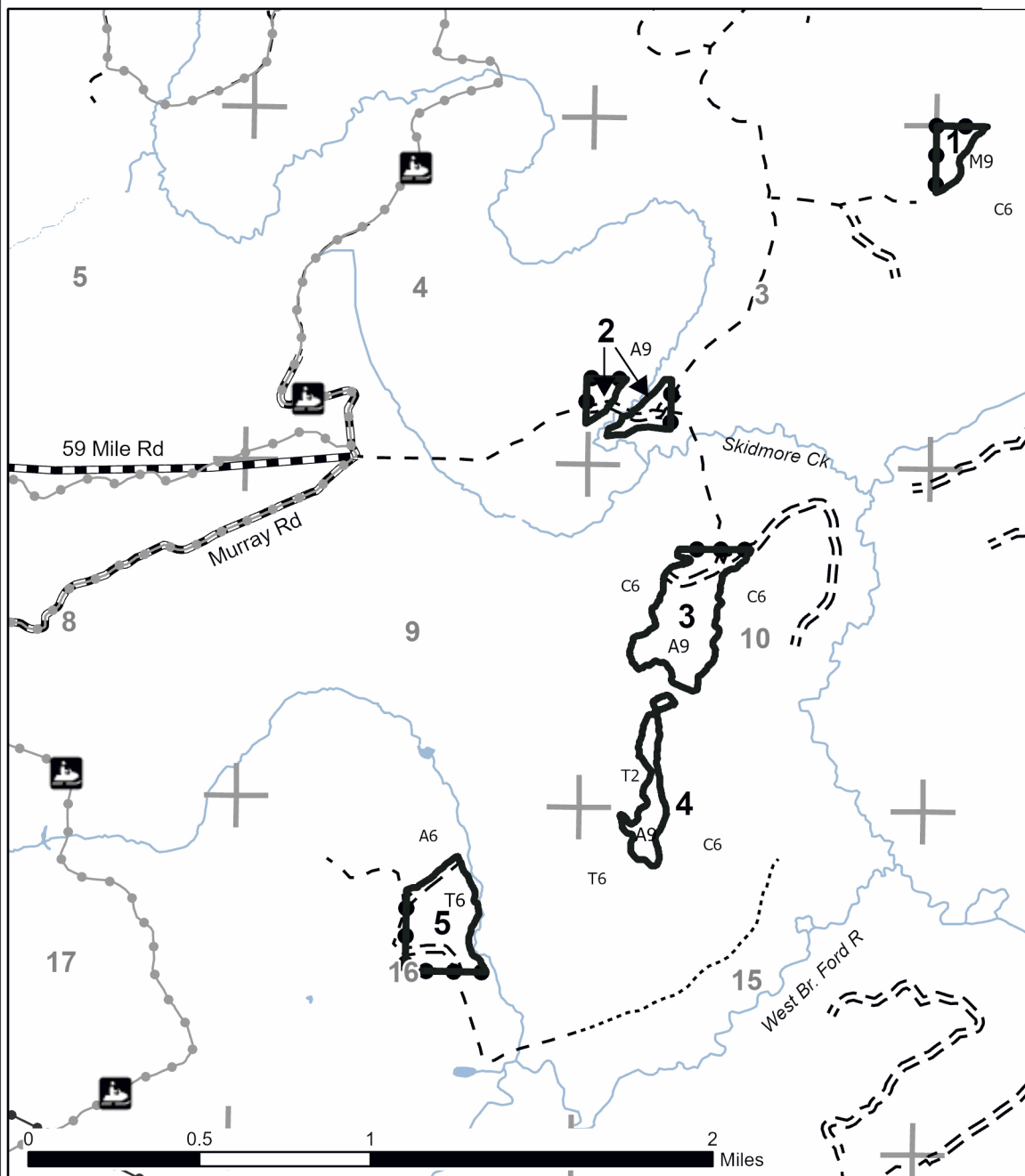
Township	Range	Section(s) and Subdivision(s)
41N	26W	Sec. 10 S1/2NW, N1/2SW, SWSW; Sec. 15 NWNW; Sec. 16 W1/2NE; Sec. 2 NWNW; Sec. 3 SWSW;

Cover Type			
A = Aspen	J = Jack Pine	O = Oak	U = Upland Brush
B = Paper Birch	K = Rock	P = Lowland Poplar	UM = Upland Mix Forest
C = Cedar	L = Lowland Brush	Q = Mixed Swamp Conifer	V = Bog or Marsh
D = Treed Bog	LM = Lowland Mix Forest	R = Red Pine	W = White Pine
E = Swamp Hardwoods	M = Maple, Beech, Birch	S = Black Spruce	X = Non Stocked
F = Spruce/Fir	MC = Mixed Conifer	T = Tamarack	Y = Sand
G = Grass	MD = Mixed Deciduous	Z = Water	
H = Hemlock	N = Marsh		

Density	
0 = Non Stocked	5 = Pole Timber Medium
1 = Seedling Sapling Poor	6 = Pole Timber Well
2 = Seedling Sapling Medium	7 = Saw Timber Poor
3 = Seedling Sapling Well	8 = Saw Timber Medium
4 = Pole Timber Poor	9 = Saw Timber Well

# Skidmore Beaver

**124.4 Acres**



PU #	Acres
1	9.9
2	14.7
3	46.1
4	17.4
5	36.3



### Legend

- Against State (Red)
- Private Line (Blue)
- Recreational Trail
- Powerline
- Forest Access Route
- Administrative Access Only
- Paved Road
- Government Gravel/Dirt
- Private Gravel/Dirt
- Section Corner