



**DEPARTMENT OF NATURAL RESOURCES
STATE OF MICHIGAN
TIMBER SALE PROSPECTUS #7529**

SCHEDULED SALE DATE AND TIME: **2:00 p.m. (local time) on June 16, 2025.**

LOCATION: **GWINN MGMT UNIT, 410 WEST M 35, GWINN, MI 49841.**

CONTACT NAME: Mike Brodeur

PHONE NUMBER: (906) 346-9201

PROSPECTUS NOTE: The bidder is advised to inspect the sale area and review the location, estimated volumes, operating costs and contract terms of proposed sales. Please be aware that some landowners may request 60 days or more notice for access across their land.

Notice is hereby given that bids will be received by the Unit Manager, GWINN MANAGEMENT UNIT, for certain timber on the following described lands:

Gleason Creek Mix (32-015-24) / T43N, R26W, SEC. 2 , S1/2NW,N1/2SW,SESW,NWSE.
T43N, R26W, SEC. 3 , SENW,NENE,S1/2NE,NESE.

Marquette County, Advertised Price \$66,311.95, 145.4 Acres, Aspen, Spruce/Fir/Tamarack.

SALE NOTE: Access may be through other public land.

TIMBER SALE INFORMATION

Gleason Creek Mix (32-015-24)

T43N, R26W, SEC. 2; T43N, R26W, SEC. 3.
Marquette County (Advertised Price \$66,311.95)

SALE NOTE: Access may be through other public land.

A timber sale contract for this lump sum, sealed bid timber sale will be awarded to the responsible bidder offering the highest sealed bid price. All units of volume listed below were estimated using the Inventory Manager computer program and the new Michigan taper model. Bids must be at or above the following advertised price for each product and species:

<u>PRODUCTS & SPECIES</u>	<u>ESTIMATED UNITS*</u>	<u>ADVERTISED PRICE</u>
Sawtimber		
Basswood	13.1 MBF	\$ 35.00 / MBF
Paper Birch	0.8 MBF	\$ 85.00 / MBF
Sugar Maple	79.0 MBF	\$ 170.00 / MBF
Pulpwood		
Balsam Fir	128 Cords	\$ 8.40 / Cord
Balsam Poplar	148 Cords	\$ 22.70 / Cord
Basswood	44 Cords	\$ 8.00 / Cord
Mixed Aspen	1,578 Cords	\$ 22.70 / Cord
Mixed Hardwood	587 Cords	\$ 9.35 / Cord
Mixed Spruce	226 Cords	\$ 8.80 / Cord
Paper Birch	34 Cords	\$ 12.00 / Cord
Tamarack	348 Cords	\$ 11.10 / Cord

* The total volume is statistically estimated within plus (+) or minus (-) 15.22 percent. There are an estimated 3,312 cords on this timber sale, plus or minus 504 cords at the 95% confidence level. The estimated units are final and not subject to adjustment. Prospective bidders are urged to examine this timber and to make their own estimates of quantity and quality.

BOND AND PAYMENT SCHEDULE:

1. A bond in the amount of \$6,631.20 to insure faithful performance of the conditions of the contract will be deposited by the successful bidder within 21 days of the sale award.
2. Cutting in any sale or unit without the required advance payment would be considered a trespass.
3. Total payment must be paid in advance or according to the following schedule :
 - (a) Ten percent (10%) of the sale value must be paid within 21 days of the sale award.
 - (b) The 10% down payment will be credited towards the first unit cut.
 - (c) Payment for each of the following units must be made before cutting begins in that unit:

<u>PAYMENT UNIT NUMBER</u>	<u>PERCENT OF TOTAL SALE VALUE</u>
01	9.0%
02	12.7%
03	37.7%
04	14.2%
05	10.9%
06	7.5%
07	8.0%

4. If no cutting takes place, the 10% down payment will not be refunded.
5. Operations on the contract issued will terminate on 06/30/2028.

SALE STATISTICS

Volumes were calculated in cubic feet using the Michigan taper model. Cubic foot volume includes all wood inside bark for the product indicated. For display purposes, cubic feet were converted to cords and MBF using a simple conversion factor, e.g. 79 cubic feet per cord and 185 cubic feet per MBF. The cubic foot volumes are precise; the cords and MBF volumes are not. Cubic foot volume cannot be directly converted to cords or boards with precision.

SALE VOLUMES

The total estimated sale volume may not equal the sum of the species/products due to the nature of statistical calculations associated with double sampling methodology.

VOLUME			STATISTICAL RANGE IN CORDS	
TOTAL CUBIC FEET	TOTAL CORDS	PERCENT ERROR	MINIMUM	MAXIMUM
261,612	3,312	15.22%	2,808	3,816

VDU VOLUMES

A VDU is a Volume Determination Unit. Volumes and their associated statistics are calculated at the VDU level and summarized to the sale level. There is often a one to one relationship between a VDU and a Payment Unit, but not always, depending on the cruise design. Refer to the VDU TO PAYMENT UNIT table.

	VOLUME			RANGE IN CORDS	
VDU	TOTAL CUBIC FEET	TOTAL CORDS	PERCENT ERROR	MINIMUM	MAXIMUM
1	12,534	159	49.79%	80	238
2	132,812	1,681	23.98%	1,278	2,084
3	32,268	408	48.90%	209	608
31	54,206	686	28.90%	488	884
91	29,792	377	30.21%	263	491
TOTAL:	261,612	3,312		2,317	4,306

VDU TO PAYMENT UNIT

When a VDU is associated with more than one Payment Unit (PU), the VDU volumes are assigned to the PU based on acres of the VDU within the PU.

VDU	VDU ACRES	PU	PU ACRES
1	8.2	1	8.2
2	41.0	3	29.8
2	41.0	4	11.2
3	15.5	2	15.5
31	69.0	5	28.6
31	69.0	6	19.7
31	69.0	7	20.7
91	11.7	1	11.7
TOTAL:	324.4		145.4

DESCRIPTION OF TIMBER BY PU (PU)

PU	MARKET GROUP	PRODUCT	QUANTITY	UNIT	ACRES	ADVERTISE PRICE
1	Paper Birch	Sawtimber	0.8	MBF	19.9	\$5,972.40
	Balsam Poplar	Pulpwood	24	Cords		
	Mixed Spruce		136	Cords		
	<i>Black Spruce</i>		131	Cords		
	<i>White Spruce</i>		5	Cords		
	Paper Birch		25	Cords		
	Tamarack		348	Cords		
2	Balsam Fir	Pulpwood	29	Cords	15.5	\$8,431.95
	Balsam Poplar		98	Cords		
	Mixed Aspen		250	Cords		
	<i>B. T. Aspen</i>		63	Cords		
	<i>Quaking Aspen</i>		187	Cords		
	Mixed Hardwood		13	Cords		
	<i>Black Cherry</i>		9	Cords		
	<i>Ironwood</i>		4	Cords		
	Mixed Spruce		19	Cords		
	<i>Black Spruce</i>		14	Cords		
	<i>White Spruce</i>		5	Cords		
3	Sugar Maple	Sawtimber	3.7	MBF	29.8	\$24,979.05
	Balsam Fir	Pulpwood	72	Cords		
	Balsam Poplar		19	Cords		
	Basswood		4	Cords		
	Mixed Aspen		961	Cords		
	<i>B. T. Aspen</i>		156	Cords		
	<i>Quaking Aspen</i>		805	Cords		
	Mixed Hardwood		99	Cords		
	<i>Black Cherry</i>		14	Cords		
	<i>Ironwood</i>		4	Cords		
	<i>Red Maple</i>		5	Cords		
	<i>Sugar Maple</i>		76	Cords		
	Mixed Spruce		52	Cords		
	<i>White Spruce</i>		52	Cords		
	Paper Birch		7	Cords		
4	Sugar Maple	Sawtimber	1.4	MBF	11.2	\$9,386.25
	Balsam Fir	Pulpwood	27	Cords		
	Balsam Poplar		7	Cords		
	Basswood		1	Cords		
	Mixed Aspen		362	Cords		
	<i>B. T. Aspen</i>		59	Cords		
	<i>Quaking Aspen</i>		303	Cords		
	Mixed Hardwood		37	Cords		
	<i>Black Cherry</i>		5	Cords		
	<i>Ironwood</i>		2	Cords		
	<i>Red Maple</i>		2	Cords		
	<i>Sugar Maple</i>		28	Cords		
	Mixed Spruce		19	Cords		
	<i>White Spruce</i>		19	Cords		
	Paper Birch		2	Cords		
5	Basswood	Sawtimber	5.5	MBF	28.6	\$7,260.25
	Sugar Maple		30.6	MBF		
	Basswood	Pulpwood	16	Cords		
	Mixed Aspen		2	Cords		
	<i>B. T. Aspen</i>		2	Cords		
	Mixed Hardwood		181	Cords		
	<i>Ironwood</i>		9	Cords		

DESCRIPTION OF TIMBER BY PU (PU), CON'T

PU	MARKET GROUP	PRODUCT	QUANTITY	UNIT	ACRES	ADVERTISE PRICE
5 con't	<i>Sugar Maple</i>	<i>Pulpwood</i>	172	<i>Cords</i>		
6	Basswood Sugar Maple Basswood Mixed Aspen <i>B. T. Aspen</i> Mixed Hardwood <i>Ironwood</i> <i>Sugar Maple</i>	Sawtimber Pulpwood	3.7 21.1 11 1 1 125 7 118	MBF MBF Cords Cords <i>Cords</i> Cords <i>Cords</i> <i>Cords</i>	19.7	\$4,995.95
7	Basswood Sugar Maple Basswood Mixed Aspen <i>B. T. Aspen</i> Mixed Hardwood <i>Ironwood</i> <i>Sugar Maple</i>	Sawtimber Pulpwood	3.9 22.2 12 2 2 132 7 125	MBF MBF Cords Cords <i>Cords</i> Cords <i>Cords</i> <i>Cords</i>	20.7	\$5,286.10
TOTAL:			92.9	MBF		
TOTAL:			3,093	Cords		

Sale Specific Conditions & Requirements

Sale Name: Gleason Creek Mix

Sale Number: 32-015-24 Seq#: 1

1 - Sale Area

1.2 - Boundaries

1.2.1 - Painted Boundaries (9/19)

The sale boundary and Payment Unit boundaries are marked and identified by blue, red and yellow paint. Exterior sale boundary lines against private property are marked with blue paint. Exterior sale boundary lines against state are marked with red paint. Interior Payment Unit boundaries are marked with yellow paint. The painted boundary line trees are not Included Timber and are to be protected unless marked with orange paint. Yellow painted trees designating an interior Payment Unit boundary are only to be cut when all surrounding Payment Units have been paid.

2 - Timber Specifications

2.1 - Included Timber

2.1.1 - Clearcut Unit(s) with Unmerchantable Trees (6/14)

Within Payment Unit(s) 1-4, cut all trees that are two (2) inches or more at DBH with the following exceptions:

- Within Payment Unit(s) 1, do not cut cedar.
- Within Payment Unit(s) 2-4, do not cut cedar and hemlock.

2.1.3 - Cut Tree Marked Unit(s) (12/08)

Within Payment Unit(s) 5-7, all trees are designated for cutting when marked with orange paint above and below stump height, regardless of merchantability.

3 - Payments

3.4 - Damaged Timber

3.4.1 - Damaged timber (7/16)

General Condition and Requirement 3.4 Damaged Timber, defines liquidated damages for undesignated live merchantable trees which are cut or injured. In addition, extreme care should be taken to avoid damage to tree seedlings and saplings.

No damage is acceptable to undesignated live merchantable trees. Within the Sale Area, if more than 5% of trees (> 4.5" DBH) within a specified area of the sale are damaged, liquidated damages will be assessed for all trees damaged. Rates will be in accordance with General Condition and Requirement 3.4 Damaged Timber.

4 - Transportation

4.1 - Construction

4.1.6 - Road Construction (4/24)

Construction of new roads or improvements of existing roads shall be done in such a way as to minimize the environmental and visual impacts. Merchantable trees shall be cut and utilized unless otherwise directed. Non-merchantable trees shall be severed and laid flat on the ground. Slash shall be scattered, and not left in windrows and kept a minimum of 10 feet back from the road edge. Stumps shall be set upright, not left on edge, and be moved at least 10 feet away from the road edge. Disturbed soil shall be feathered into the woods and not left in berms or windrows.

4.1.7 - Road Closure (10/11)

All new roads built into the sale must be blocked to vehicle traffic upon completion of the sale. Overgrown roads that are reopened shall be considered new roads. In general, this will require constructing a four (4') foot high berm of stumps and logs covered with earth. Temporary berms may be required if no sale activity occurs for 60 or more consecutive days. Contact the Sale Administrator for specific details of design and placement.

4.2 - Maintenance

4.2.1 - Hauling Restriction (12/08)

Hauling may be restricted on forest roads by the Unit Manager or his/her representative. The restriction may occur during spring breakup or during wet weather conditions.

4.2.2 - Fill Material (4/07)

To maintain roads, fill material may be needed in areas where "holes" exist or may be expected to develop. This fill material should be placed before trucking begins. Contact the Sale Administrator regarding the availability of onsite sand or gravel from adjacent State-owned lands.

4.2.3 - Road maintenance (8/13)

The following road maintenance may be required: Within 60 days of completion of hauling, or if no hauling occurs for 60 days, the Unit Manager or his/her representative may require the road to be maintained and graded. This includes cleaning of drainage areas, grading, crowning and filling with gravel, if necessary. Damages will be assessed if grading/repair does not occur.

5 - Operations

5.1 - Notification

5.1.1 - Pre-sale Conference (10/16)

A pre-sale conference on site between the Purchaser and Sale Administrator is required prior to beginning any operations. Contact Sale Administrator at least 3 days before starting work to schedule the conference.

5.2 - Conduct of Operations

5.2.3 - Operating Restrictions

5.2.3.1 - Operating Restrictions (9/11)

Within Payment Unit(s) 1, unless changed by written agreement, cutting, skidding, and hauling are limited to frozen winter conditions (approximately December 1 to April 1). This restriction is due to wet soils.

5.2.3.3 - Bark Slippage Restriction (3/09)

Within Payment Unit(s) 5-7, unless changed by written agreement, cutting and skidding are not permitted during the period of April 15 to July 15. This restriction is because of bark slippage.

5.2.32 - Decking/Landing Restoration (9/13)

All decking and landing areas must have the surface area restored to a condition equal to or better than before. This is to ensure the proper regeneration of the stand. Wood debris, chips and "cookies" from trimmings must be removed or scattered away from landing and loading areas and may not be windrowed on the edge.

5.2.38 - No Decking Against Live Trees (2/04)

Cut products may not be decked against unmarked or designated leave trees.

5.4 - Soil Protection

5.4.1 - Rutting Restriction, General (7/16)

Operations are to cease immediately if equipment and weather conditions result in rutting of roads and/or skid trails which is 12 inches or greater in depth and 50 feet in length. The Unit Manager or his/her representative may restrict hauling and/or skidding if ruts exceed the specified depth. With the Unit Manager or his/her representative's approval, the Purchaser may return to the area when the risk of rutting has decreased.

5.4.2 - Skid Trails (2/04)

Skid trails up and down slopes should be avoided. If, however, this is unavoidable, these trails will be left in a non-erodible condition using water bars, logs, and slash. Placing of slash on these skid trails while logging is ongoing may alleviate need for any further action. At the direction of the Sale Administrator, seed, fertilizer, and mulch may also be required.

6 - Safety and Fire Prevention

6.2 - Signing

6.2.1 - Road Posting (10/20)

The Purchaser is responsible for posting and maintaining caution signs on Ross Grade prior to beginning operations. The road

must be posted at appropriate distances from the Sale Area to warn of logging activity and truck traffic. Signs must be removed when harvest operations are suspended or completed. The Purchaser will provide these signs.



TIMBER SALE MAP

This information provided by authority of Part 525, 1994 PA 451, as amended.

Sale Number

32-015-24

Date

10/10/2024

Forest Management Unit

Gwinn Mgt Unit

County

Marquette

Mapped By: Siler

Cruised By: Gwinn Staff & Contractor

Scale

1:15,840

Page

1

Of

1

Township

43N

Range

26W

Section(s) and

Subdivision(s) Sec. 2 S1/2NW,N1/2SW,SESW,NWSE; Sec. 3 SENW,NENE,S1/2NE,NESE;

Cover Type

A = Aspen	J = Jack Pine	O = Oak	U = Upland Brush
B = Paper Birch	K = Rock	P = Lowland Poplar	UM = Upland Mix Forest
C = Cedar	L = Lowland Brush	Q = Mixed Swamp Conifer	V = Bog or Marsh
D = Treed Bog	LM = Lowland Mix Forest	R = Red Pine	W = White Pine
E = Swamp Hardwoods	M = Maple, Beech, Birch	S = Black Spruce	X = Non Stocked
F = Spruce/Fir	MC = Mixed Conifer	T = Tamarack	Y = Sand
G = Grass	MD = Mixed Deciduous		Z = Water
H = Hemlock	N = Marsh		

Density

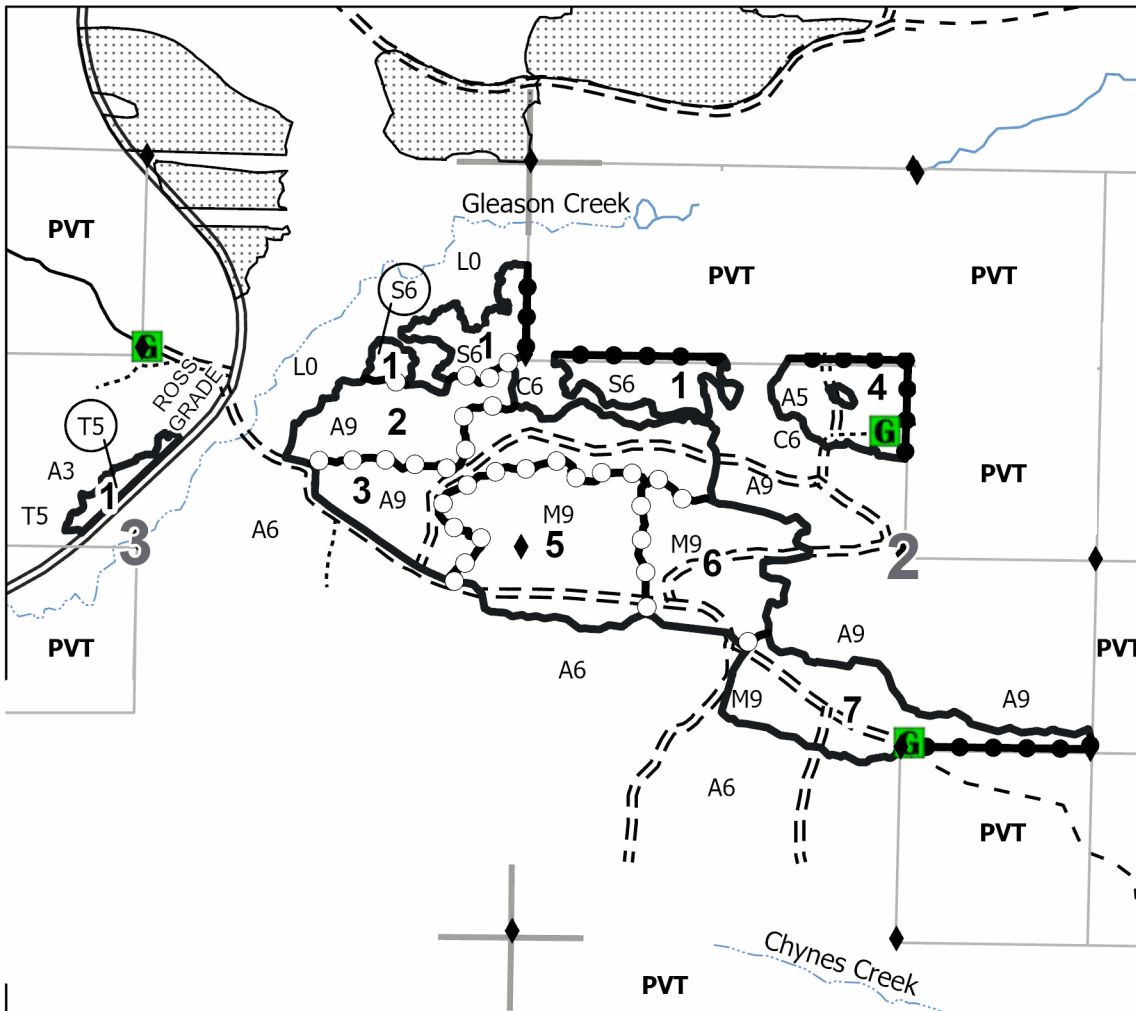
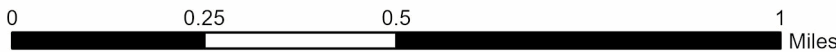
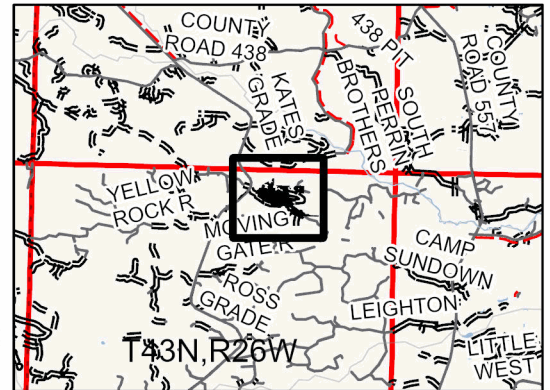
0 = Non Stocked	5 = Pole Timber Medium
1 = Seedling Sapling Poor	6 = Pole Timber Well
2 = Seedling Sapling Medium	7 = Saw Timber Poor
3 = Seedling Sapling Well	8 = Saw Timber Medium
4 = Pole Timber Poor	9 = Saw Timber Well

PU #	Acres	PU #	Acres
1	19.9	5	28.6
2	15.5	6	19.7
3	29.8	7	20.7
4	11.2		

Gleason Creek Mix

145.4 Acres

Locator Map 1:200,000



Legend

- Against State (Red)
- Private Line (Blue)
- Payment Unit (Yellow)
- Nearby Timber Sale
- State Boundary
- Primary Forest Road
- Forest Access Route
- Administrative Access Only
- Paved Road
- Private Gravel/Dirt
- Intermittent Stream
- Perennial River
- Survey Grade Corner
- Gate
- Section Corner

Use QR Code to
open Map in App

