



**DEPARTMENT OF NATURAL RESOURCES  
STATE OF MICHIGAN  
TIMBER SALE PROSPECTUS #7534**

SCHEDULED SALE DATE AND TIME: **10:00 a.m. (local time) on January 21, 2025.**

LOCATION: **ATLANTA MGMT UNIT, 13501 M 33, ATLANTA, MI 49709.**

CONTACT NAME: Matt Foster

PHONE NUMBER: (989) 619-5921

PROSPECTUS NOTE: The bidder is advised to inspect the sale area and review the location, estimated volumes, operating costs and contract terms of proposed sales. Please be aware that some landowners may request 60 days or more notice for access across their land.

Notice is hereby given that bids will be received by the Unit Manager, ATLANTA MANAGEMENT UNIT, for certain timber on the following described lands:

Huff and 622 West Aspen HWD (54-008-24) / T31N, R01E, SEC. 17, S1/2SW,SWSE.

T31N, R01E, SEC. 19, NENE.

T31N, R01E, SEC. 20, N1/2SE.

T31N, R01E, SEC. 20, NW,N1/2NE,SENE,N1/2SW,SESW.

Montmorency County, Advertised Price \$97,309.60, 209.6 Acres, Aspen, Hardwood.

SALE NOTE: 2.2.5 - Limbed tree skidding- Payment Units 8-10

5.1.3 - Well heads and natural gas pipelines- All Payment Units

5.1.6 - Utility R.O.W.- Payment Units 2-5 and 7

5.2.3.3 - Bark slippage restriction- Payment Units 8-10

5.2.3.4 - Oak wilt restriction, no exceptions- Payment Units 8-10

# TIMBER SALE INFORMATION

Huff and 622 West Aspen HWD (54-008-24)

T31N, R01E, SEC. 17; T31N, R01E, SEC. 19; T31N, R01E, SEC. 20.  
Montmorency County (Advertised Price \$97,309.60)

SALE NOTE: 2.2.5 - Limbed tree skidding- Payment Units 8-10

5.1.3 - Well heads and natural gas pipelines- All Payment Units

5.1.6 - Utility R.O.W.- Payment Units 2-5 and 7

5.2.3.3 - Bark slippage restriction- Payment Units 8-10

5.2.3.4 - Oak wilt restriction, no exceptions- Payment Units 8-10

A timber sale contract for this lump sum, sealed bid timber sale will be awarded to the responsible bidder offering the highest sealed bid price .

All units of volume listed below were estimated using the Inventory Manager computer program and the new Michigan taper model. Bids must be at or above the following advertised price for each product and species:

<u>PRODUCTS &amp; SPECIES</u>	<u>ESTIMATED UNITS*</u>	<u>ADVERTISED PRICE</u>
<b>Sawtimber</b>		
Basswood	61.1 MBF	\$ 55.00 / MBF
Mixed Aspen	125.2 MBF	\$ 84.00 / MBF
Red Maple	9.9 MBF	\$ 60.00 / MBF
Red Oak	23.4 MBF	\$ 180.00 / MBF
Sugar Maple	54.6 MBF	\$ 258.00 / MBF
<b>Pulpwood</b>		
Balsam Fir	427 Cords	\$ 17.05 / Cord
Basswood	236 Cords	\$ 14.85 / Cord
Black Spruce	17 Cords	\$ 13.10 / Cord
Mixed Aspen	1,731 Cords	\$ 20.35 / Cord
Mixed Hardwood	784 Cords	\$ 20.70 / Cord
Paper Birch	46 Cords	\$ 14.20 / Cord
Red Oak	51 Cords	\$ 25.00 / Cord
Red Pine	4 Cords	\$ 37.25 / Cord

\* The total volume is statistically estimated within plus (+) or minus (-) 16.57 percent. There are an estimated 3,932 cords on this timber sale, plus or minus 652 cords at the 95% confidence level. The estimated units are final and not subject to adjustment. Prospective bidders are urged to examine this timber and to make their own estimates of quantity and quality.

**BOND AND PAYMENT SCHEDULE:**

1. A bond in the amount of \$4,865.48 to insure faithful performance of the conditions of the contract will be deposited by the successful bidder within 21 days of the sale award.
2. Cutting in any sale or unit without the required advance payment would be considered a trespass.
3. Total payment must be paid in advance or according to the following schedule :
  - (a) Ten percent (10%) of the sale value must be paid within 21 days of the sale award.
  - (b) The 10% down payment will be credited towards the first unit cut.
  - (c) Payment for each of the following units must be made before cutting begins in that unit:

<u>PAYMENT UNIT NUMBER</u>	<u>PERCENT OF TOTAL SALE VALUE</u>
01	15.2%
02	7.5%
03	4.6%
04	5.5%
05	19.7%
06	19.3%
07	8.4%
08	3.0%
09	9.4%
10	7.4%

4. If no cutting takes place, the 10% down payment will not be refunded.
5. Operations on the contract issued will terminate on 06/30/2028.

**SALE STATISTICS**

Volumes were calculated in cubic feet using the Michigan taper model. Cubic foot volume includes all wood inside bark for the product indicated. For display purposes, cubic feet were converted to cords and MBF using a simple conversion factor, e.g. 79 cubic feet per cord and 185 cubic feet per MBF. The cubic foot volumes are precise; the cords and MBF volumes are not. Cubic foot volume cannot be directly converted to cords or boards with precision.

### SALE VOLUMES

The total estimated sale volume may not equal the sum of the species/products due to the nature of statistical calculations associated with double sampling methodology.

VOLUME			STATISTICAL RANGE IN CORDS	
TOTAL CUBIC FEET	TOTAL CORDS	PERCENT ERROR	MINIMUM	MAXIMUM
310,656	3,932	16.57%	3,281	4,584

### VDU VOLUMES

A VDU is a Volume Determination Unit. Volumes and their associated statistics are calculated at the VDU level and summarized to the sale level. There is often a one to one relationship between a VDU and a Payment Unit, but not always, depending on the cruise design. Refer to the VDU TO PAYMENT UNIT table.

VDU	VOLUME		PERCENT ERROR	RANGE IN CORDS	
	TOTAL CUBIC FEET	TOTAL CORDS		MINIMUM	MAXIMUM
2	25,772	326	33.90%	216	437
3	200,176	2,534	24.58%	1,911	3,157
4	3,500	44	91.43%	4	85
18	23,755	301	27.16%	219	382
24	23,796	301	28.45%	216	387
26	6,813	86	46.06%	47	126
55	26,844	340	36.97%	214	465
<b>TOTAL:</b>	<b>310,656</b>	<b>3,932</b>		<b>2,826</b>	<b>5,039</b>

### VDU TO PAYMENT UNIT

When a VDU is associated with more than one Payment Unit (PU), the VDU volumes are assigned to the PU based on acres of the VDU within the PU.

VDU	VDU ACRES	PU	PU ACRES
2	12.1	6	12.1
3	98.4	1	24.1
3	98.4	2	12.0
3	98.4	3	7.3
3	98.4	4	8.8
3	98.4	5	23.4
3	98.4	6	9.5
3	98.4	7	13.3
4	8.2	8	8.2
18	41.9	9	41.9
24	28.5	9	0.5
24	28.5	10	28.0
26	2.7	6	2.7
55	17.8	5	12.8
55	17.8	6	5.0
<b>TOTAL:</b>	<b>846.3</b>		<b>209.6</b>

**DESCRIPTION OF TIMBER BY PU (PU)**

PU	MARKET GROUP	PRODUCT	QUANTITY	UNIT	ACRES	ADVERTISE PRICE			
1	Basswood	Sawtimber	1.0	MBF	24.1	\$14,795.75			
	Mixed Aspen		26.4	MBF					
	<i>B. T. Aspen</i>		10.9	MBF					
	<i>Quaking Aspen</i>		15.5	MBF					
	Red Maple		0.5	MBF					
	Red Oak		3.7	MBF					
	Sugar Maple		4.0	MBF					
	Balsam Fir		Pulpwood	54			Cords		
	Basswood			14			Cords		
	Black Spruce			2			Cords		
	Mixed Aspen			353			Cords		
	<i>B. T. Aspen</i>			58			Cords		
	<i>Balsam Poplar</i>			9			Cords		
	<i>Quaking Aspen</i>			286			Cords		
	Mixed Hardwood	97		Cords					
	<i>Beech</i>	2		Cords					
	<i>Black Cherry</i>	11		Cords					
	<i>Ironwood</i>	7		Cords					
	<i>Red Maple</i>	46		Cords					
	<i>Sugar Maple</i>	29		Cords					
	<i>White Ash</i>	2	Cords						
	Paper Birch	7	Cords						
	<i>Paper Birch</i>	Sawtimber	0.5	MBF					
	<i>Paper Birch</i>		Pulpwood	6			Cords		
	Red Oak	11		Cords					
	Red Pine	2	Cords						
	2	Basswood	Sawtimber	0.5			MBF	12.0	\$7,309.35
Mixed Aspen		13.0		MBF					
<i>B. T. Aspen</i>		5.3		MBF					
<i>Quaking Aspen</i>		7.7		MBF					
Red Maple		0.2		MBF					
Red Oak		1.9		MBF					
Sugar Maple		2.0		MBF					
Balsam Fir		Pulpwood		27	Cords				
Basswood				7	Cords				
Black Spruce				1	Cords				
Mixed Aspen				177	Cords				
<i>B. T. Aspen</i>				30	Cords				
<i>Balsam Poplar</i>				5	Cords				
<i>Quaking Aspen</i>				142	Cords				
Mixed Hardwood			47	Cords					
<i>Beech</i>			1	Cords					
<i>Black Cherry</i>			5	Cords					
<i>Ironwood</i>			4	Cords					
<i>Red Maple</i>			23	Cords					
<i>Sugar Maple</i>			14	Cords					
Paper Birch		3	Cords						
<i>Paper Birch</i>		Sawtimber	0.2	MBF					
<i>Paper Birch</i>			Pulpwood	3	Cords				
Red Oak		5		Cords					
3		Basswood	Sawtimber	0.3	MBF	7.3	\$4,440.50		
		Mixed Aspen		7.9	MBF				
		<i>B. T. Aspen</i>		3.2	MBF				
	<i>Quaking Aspen</i>	4.7		MBF					
	Red Maple	0.1		MBF					

**DESCRIPTION OF TIMBER BY PU (PU), CON'T**

PU	MARKET GROUP	PRODUCT	QUANTITY	UNIT	ACRES	ADVERTISE PRICE
3 con't	Red Oak	Sawtimber	1.1	MBF		
	Sugar Maple		1.2	MBF		
	Balsam Fir	Pulpwood	16	Cords		
	Basswood		4	Cords		
	Black Spruce		1	Cords		
	Mixed Aspen		108	Cords		
	<i>B. T. Aspen</i>		18	Cords		
	<i>Balsam Poplar</i>		3	Cords		
	<i>Quaking Aspen</i>		87	Cords		
	Mixed Hardwood		29	Cords		
	<i>Beech</i>		1	Cords		
	<i>Black Cherry</i>		3	Cords		
	<i>Ironwood</i>		2	Cords		
	<i>Red Maple</i>		14	Cords		
	<i>Sugar Maple</i>		9	Cords		
	Paper Birch		2	Cords		
	<i>Paper Birch</i>	Sawtimber	0.1	MBF		
	<i>Paper Birch</i>	Pulpwood	2	Cords		
	Red Oak		3	Cords		
	4	Basswood	Sawtimber	0.3		
Mixed Aspen			9.5	MBF		
<i>B. T. Aspen</i>			3.9	MBF		
<i>Quaking Aspen</i>			5.6	MBF		
Red Maple			0.2	MBF		
Red Oak			1.4	MBF		
Sugar Maple			1.4	MBF		
Balsam Fir		Pulpwood	20	Cords		
Basswood			5	Cords		
Black Spruce			1	Cords		
Mixed Aspen			130	Cords		
<i>B. T. Aspen</i>			22	Cords		
<i>Balsam Poplar</i>			4	Cords		
<i>Quaking Aspen</i>			104	Cords		
Mixed Hardwood			35	Cords		
<i>Beech</i>			1	Cords		
<i>Black Cherry</i>			4	Cords		
<i>Ironwood</i>			3	Cords		
<i>Red Maple</i>			17	Cords		
<i>Sugar Maple</i>			10	Cords		
Paper Birch			2	Cords		
<i>Paper Birch</i>		Sawtimber	0.2	MBF		
<i>Paper Birch</i>		Pulpwood	2	Cords		
Red Oak		4	Cords			
5	Basswood	Sawtimber	0.9	MBF	36.2	\$19,117.35
	Mixed Aspen		25.4	MBF		
	<i>B. T. Aspen</i>		10.4	MBF		
	<i>Quaking Aspen</i>		15.0	MBF		
	Red Maple		0.5	MBF		
	Red Oak		3.6	MBF		
	Sugar Maple		3.9	MBF		
	Balsam Fir	Pulpwood	95	Cords		
	Basswood		13	Cords		
	Black Spruce		8	Cords		
	Mixed Aspen		512	Cords		
	<i>B. T. Aspen</i>		58	Cords		

**DESCRIPTION OF TIMBER BY PU (PU), CON'T**

PU	MARKET GROUP	PRODUCT	QUANTITY	UNIT	ACRES	ADVERTISE PRICE
5 con't	<i>Balsam Poplar</i>	<i>Pulpwood</i>	10	<i>Cords</i>		
	<i>Quaking Aspen</i>		444	<i>Cords</i>		
	Mixed Hardwood		120	<i>Cords</i>		
	<i>Beech</i>		2	<i>Cords</i>		
	<i>Black Cherry</i>		14	<i>Cords</i>		
	<i>Ironwood</i>		8	<i>Cords</i>		
	<i>Red Maple</i>		58	<i>Cords</i>		
	<i>Sugar Maple</i>		37	<i>Cords</i>		
	<i>White Ash</i>		1	<i>Cords</i>		
	Paper Birch		10	<i>Cords</i>		
	<i>Paper Birch</i>	<i>Sawtimber</i>	0.5	<i>MBF</i>		
	<i>Paper Birch</i>	<i>Pulpwood</i>	9	<i>Cords</i>		
	Red Oak		10	<i>Cords</i>		
	Red Pine		1	<i>Cords</i>		
6	Basswood	Sawtimber	4.6	MBF	29.3	\$18,791.50
	Mixed Aspen		28.6	MBF		
	<i>B. T. Aspen</i>		4.2	<i>MBF</i>		
	<i>Quaking Aspen</i>		24.4	<i>MBF</i>		
	Red Maple		8.1	MBF		
	Red Oak		1.5	MBF		
	Sugar Maple		13.3	MBF		
	Balsam Fir	Pulpwood	185	Cords		
	Basswood		13	Cords		
	Black Spruce		3	Cords		
	Mixed Aspen		252	Cords		
	<i>B. T. Aspen</i>		23	<i>Cords</i>		
	<i>Balsam Poplar</i>		4	<i>Cords</i>		
	<i>Quaking Aspen</i>		225	<i>Cords</i>		
	Mixed Hardwood		159	Cords		
	<i>Beech</i>		1	<i>Cords</i>		
	<i>Black Cherry</i>		11	<i>Cords</i>		
	<i>Ironwood</i>		11	<i>Cords</i>		
	<i>Red Maple</i>		46	<i>Cords</i>		
	<i>Sugar Maple</i>		90	<i>Cords</i>		
	Paper Birch		3	Cords		
	<i>Paper Birch</i>	<i>Sawtimber</i>	0.2	<i>MBF</i>		
	<i>Paper Birch</i>	<i>Pulpwood</i>	3	<i>Cords</i>		
	Red Oak		4	Cords		
7	Basswood	Sawtimber	0.5	MBF	13.3	\$8,173.85
	Mixed Aspen		14.4	MBF		
	<i>B. T. Aspen</i>		5.9	<i>MBF</i>		
	<i>Quaking Aspen</i>		8.5	<i>MBF</i>		
	Red Maple		0.3	MBF		
	Red Oak		2.1	MBF		
	Sugar Maple		2.2	MBF		
	Balsam Fir	Pulpwood	30	Cords		
	Basswood		8	Cords		
	Black Spruce		1	Cords		
	Mixed Aspen		196	Cords		
	<i>B. T. Aspen</i>		33	<i>Cords</i>		
	<i>Balsam Poplar</i>		5	<i>Cords</i>		
	<i>Quaking Aspen</i>		158	<i>Cords</i>		
	Mixed Hardwood		53	Cords		
	<i>Beech</i>		1	<i>Cords</i>		
	<i>Black Cherry</i>		6	<i>Cords</i>		

**DESCRIPTION OF TIMBER BY PU (PU), CON'T**

PU	MARKET GROUP	PRODUCT	QUANTITY	UNIT	ACRES	ADVERTISE PRICE
7 con't	<i>Ironwood</i>	<i>Pulpwood</i>	4	<i>Cords</i>		
	<i>Red Maple</i>		25	<i>Cords</i>		
	<i>Sugar Maple</i>		16	<i>Cords</i>		
	<i>White Ash</i>		1	<i>Cords</i>		
	Paper Birch		4	<i>Cords</i>		
	<i>Paper Birch</i>	<i>Sawtimber</i>	0.3	<i>MBF</i>		
	<i>Paper Birch</i>	<i>Pulpwood</i>	3	<i>Cords</i>		
	Red Oak		6	<i>Cords</i>		
	Red Pine		1	<i>Cords</i>		
8	Basswood	Sawtimber	2.0	MBF	8.2	\$2,908.25
	Sugar Maple		9.5	MBF		
	Basswood	Pulpwood	1	Cords		
	Mixed Hardwood		14	Cords		
	<i>Sugar Maple</i>		14	<i>Cords</i>		
	Paper Birch		3	Cords		
	<i>Paper Birch</i>		3	<i>Cords</i>		
9	Basswood	Sawtimber	19.4	MBF	42.4	\$9,161.85
	Red Oak		1.0	MBF		
	Sugar Maple		14.7	MBF		
	Basswood	Pulpwood	77	Cords		
	Mixed Hardwood		136	Cords		
	<i>Ironwood</i>		7	<i>Cords</i>		
	<i>Sugar Maple</i>		129	<i>Cords</i>		
	Paper Birch		8	Cords		
	<i>Paper Birch</i>	<i>Sawtimber</i>	0.4	<i>MBF</i>		
	<i>Paper Birch</i>	<i>Pulpwood</i>	7	<i>Cords</i>		
Red Oak		2	Cords			
10	Basswood	Sawtimber	31.6	MBF	28.0	\$7,230.55
	Red Oak		7.1	MBF		
	Sugar Maple		2.4	MBF		
	Basswood	Pulpwood	94	Cords		
	Mixed Aspen		3	Cords		
	<i>B. T. Aspen</i>		3	<i>Cords</i>		
	Mixed Hardwood		94	Cords		
	<i>Beech</i>		2	<i>Cords</i>		
	<i>Ironwood</i>		3	<i>Cords</i>		
	<i>Sugar Maple</i>		89	<i>Cords</i>		
	Paper Birch		3	Cords		
	<i>Paper Birch</i>		3	<i>Cords</i>		
	Red Oak		6	Cords		
TOTAL:			274.2	MBF		
TOTAL:			3,295	Cords		

## Sale Specific Conditions & Requirements

Sale Name: Huff and 622 West Aspen HWD

Sale Number: 54-008-24 Seq#: 2

### 1 - Sale Area

#### 1.2 - Boundaries

##### 1.2.1 - Painted boundaries (9/19)

The sale boundary and Payment Unit boundaries are marked and identified by red, blue, and yellow paint, along with county roads and cover type changes as shown on the Timber Sale Map. Exterior sale boundary lines against private are marked with blue paint. Exterior sale boundary lines against state are marked with red paint, with the exception of the northern boundary of Payment Unit 1-3 and the southern boundary of Payment Unit 4-5 and 7, which are unpainted and designated by County Road 622. In addition, the eastern boundary of Payment Unit 1 is unpainted and designated by Huff Road. Interior Payment Unit boundaries are marked with yellow paint with the exception of interior sale boundary lines that are adjacent to the non-forested openings (G0) or county roads, which are unpainted and designated by the cover type change; no harvesting activities may occur within G0 non-forested stands. Interior retention patches are marked with red paint; no harvesting activities may occur within these areas, and they are not to be entered. The painted boundary line trees are not Included Timber and are to be protected. Yellow painted trees are only to be cut when all surrounding Payment Units have been paid.

### 2 - Timber Specifications

#### 2.1 - Included Timber

##### 2.1.1 - Clearcut unit(s) with unmerchantable trees (6/14)

Within Payment Unit(s) 1-7, cut all trees that are two (2) inches or more at DBH, except do not cut any white pine, hemlock, elm, or any trees marked with green paint.

Note: See spec 5.2.4.4 - 'Dead and down creation' for instructions on orange marked trees.

##### 2.1.3 - Cut tree marked unit(s) (12/08)

Within Payment Unit(s) 8-10, all trees are designated for cutting when marked with orange paint above and below stump height, regardless of merchantability.

#### 2.2 - Utilization

##### 2.2.5 - Limbed tree skidding (1/09)

The skidding of whole trees or tree segments with limbs attached is prohibited within Payment Units 8-10.

### 3 - Payments

#### 3.3 - Pre-measured Sales

##### 3.3.4 - Dividing payment units (7/14)

Payment Unit(s) valued over \$25,000 may be divided at the request of the Purchaser and upon approval of the Unit Manager. Dividing Payment Units is a contract modification which requires a Timber Sale Contract Amendment. There will be only one division per Payment Unit.

#### 3.4 - Damaged Timber

##### 3.4.1 - Damaged timber (7/16)

General Condition and Requirement 3.4 Damaged Timber, defines liquidated damages for undesignated live merchantable trees which are cut or injured. No damage is acceptable to undesignated live merchantable trees. Within the Sale Area, if more than 5% of trees (> 4.5" DBH) within a specified area of the sale are damaged, liquidated damages will be assessed for all trees damaged. Rates will be in accordance with General Condition and Requirement 3.4 Damaged Timber.

### 4 - Transportation

#### 4.1 - Construction



#### 4.1.3 - Slash and earthen piles (8/04)

Piles or windrows of earth along roads and landings that have been widened or constructed shall be leveled. Slash from road maintenance or construction, including stumps, shall be chipped, utilized or otherwise removed from the sale.

#### 4.1.6 - Road construction (4/24)

Construction of new roads or improvements of existing roads shall be done in such a way as to minimize the environmental and visual impacts. Merchantable trees shall be cut and utilized unless otherwise directed. Non-merchantable trees shall be severed and laid flat on the ground. Slash shall be scattered, and not left in windrows and kept a minimum of 10 feet back from the road edge. Stumps shall be set upright, not left on edge, and be moved at least 10 feet away from the road edge. Improved roads and constructed roads must not be widened beyond 15 feet. Narrow access into some Payment Units will require widening and blading on lengths of state forest roads. Additional access timber must be piled separately for scaling by the Sale Administrator.

#### 4.1.7 - Road closure (10/11)

All new roads built into the sale must be blocked to vehicle traffic upon completion of the sale. Overgrown roads that are reopened shall be considered new roads. In general, this will require constructing a four (4') foot high berm of stumps and logs covered with earth. Stumps and brush must be placed along the remainder of the trail. These roads must be rendered impassable to cars and trucks. Contact the Sale Administrator for specific details of design and placement.

### 4.2 - Maintenance

#### 4.2.5 - Two wheel drive condition (2/04)

All existing trail roads on and adjacent to the sale area must be passable by two-wheel drive traffic for the duration of the sale.

## 5 - Operations

### 5.1 - Notification

#### 5.1.1 - Pre-sale conference (10/16)

A pre-sale conference between the Purchaser and sale administrator is required prior to beginning any operations to determine landing and road locations. The Unit Manager or his/her representative must be contacted at least 5 days in advance to schedule the conference.

#### 5.1.3 - Well heads and natural gas pipelines (11/15)

The Purchaser is responsible for contacting the gas or pipeline company 30 days prior to operating equipment in the vicinity of well heads or natural gas pipelines. Please contact:

Jordan Development Company, LLC.  
4600 Cairn Hwy, Kewadin, MI 49648  
(231) 264-6349

#### 5.1.4 - Post-sale conference (10/16)

A post-sale conference on site between the Purchaser and sale administrator is required 5 days prior to the completion of active logging operations to determine clean-up and repair of landings, road edges, and the fulfillment of other contract specifications.

#### 5.1.6 - Utility R.O.W. (4/19)

It is the responsibility of the Purchaser to obtain permission from the utility company to utilize the underground electric line and overhead powerline R.O.W. for operations. Please contact:

Great Lakes Energy  
1323 Boyne Ave, Boyne City, MI 49712  
(888) 485-2537  
www.gtlakes.com

### 5.2 - Conduct of Operations

#### 5.2.1 - Slash

#### 5.2.1.10 - No slash in openings (5/10)

No brush or logging debris is to be left in maintained wildlife openings which are indicated by "G0" on the Timber Sale Map. Any damage to the opening shall be repaired according to specifications of the Unit Manager or his/her representative.

#### 5.2.2 - Hazard Trees/Snags

##### 5.2.2.1 - Den trees (10/16)

Obvious hollow and/or den trees shall be protected and left standing unless they are a safety hazard.

#### 5.2.3 - Operating Restrictions

##### 5.2.3.3 - Bark slippage restriction (3/09)

Within Payment Unit(s) 8-10, unless changed by written agreement, cutting and skidding are not permitted during the period of April 15 to July 15. This restriction is because of bark slippage.

##### 5.2.3.4 - Oak wilt restriction, no exceptions (1/18)

Within Payment Units 8-10, cutting, skidding, and hauling within the sale and brushing of access roads to the sale are not permitted during the period of April 15 to July 15. No exceptions will be granted. This is necessary to reduce the spread of oak wilt.

##### 5.2.3.11 - Coppice regeneration protection (4/10)

Timber harvesting in Payment Units 1-7 must be completed within 60 days of severing/cutting stem(s) to minimize damage to deciduous regeneration. Any post-harvest operations, such as chipping, must be completed before sprouting of regeneration occurs. If it is anticipated that chipping will be delayed, then tops shall be carried to one central location or left unchipped. The Unit Manager or his/her representative may cease such operations if sprouting occurs before the operation is complete.

#### 5.2.4 - Dead and Down Creation

##### 5.2.4.4 - Dead and down creation, grouse (6/18)

To encourage grouse and other wildlife, in Payment Unit(s) 1-7, push over and leave all orange marked trees on the ground. If it is impractical to push the trees over, they may be cut or partially cut and pushed over. Tree crowns should touch the ground. These trees are scattered evenly throughout the unit, and preferably at least two chains from any roads, two-tracks, or trails open to vehicles.

##### 5.2.31 - Landing locations (9/13)

Landing locations are shown on the Timber Sale Map. Landings must be confined to these designated sites unless otherwise authorized by the Unit Manager or his/her representative.

##### 5.2.32 - Decking/landing restoration (9/13)

All decking and landing areas must have the surface area restored to a condition equal to or better than before. This is to ensure the proper regeneration of the stand. Wood debris, chips and "cookies" from trimmings must be removed or scattered away from landing and loading areas and may not be windrowed on the edge.

##### 5.2.33 - Gas well re-vegetation (12/08)

In the event that the gas well is utilized for a landing, the site must be re-vegetated with a seeding mixture specified by the Unit Manager or his/her representative.

##### 5.2.38 - No decking against live trees (2/04)

Cut products may not be decked against unmarked or designated leave trees.

#### 5.4 - Soil Protection

##### 5.4.1 - Rutting restriction, general (7/16)

Operations are to cease immediately if equipment and weather conditions result in rutting of roads and/or skid trails which is 12 inches or greater in depth and 50 feet in length. The Unit Manager or his/her representative may restrict hauling and/or skidding if ruts exceed the specified depth. With the Unit Manager or his/her representative's approval, the Purchaser may return to the area when the risk of rutting has decreased.

##### 5.4.2 - Skid trails (2/04)

Skid trails up and down slopes should be avoided. If however this is unavoidable, these trails will be left in a non-erodible condition using water bars, logs, and slash. Placing of slash on these skid trails while logging is ongoing may alleviate need for any further action. At the direction of the sale administrator, seed, fertilizer, and mulch may also be required.

#### 5.8 - Protection of Endangered Species

##### 5.8.5 - Protection of raptor nests (3/13)

All trees with raptor nests will be protected if found during harvesting operations. Notification will be made to the Unit Manager or his/her representative who will notify the Wildlife Biologist so an on-site evaluation and recommendation can be made, if necessary.



### TIMBER SALE MAP

This information provided by authority of Part 525, 1994 PA 451, as amended.

Sale Number	Date	
<b>54-008-24</b>	10/25/2024	
Scale	Page	Of
1:15,840	1	1

Forest Management Unit	County	Mapped By:	D. Coy
Atlanta Mgt Unit	Montmorency	Cruised By:	D. Coy

Township	Range	Section(s) and Subdivision(s)
31N	01E	Sec. 17 S1/2SW,SWSE; Sec. 19 NENE; Sec. 20 N1/2SE; Sec. 20 NW,N1/2NE,SENE,N1/2SW,SESW;

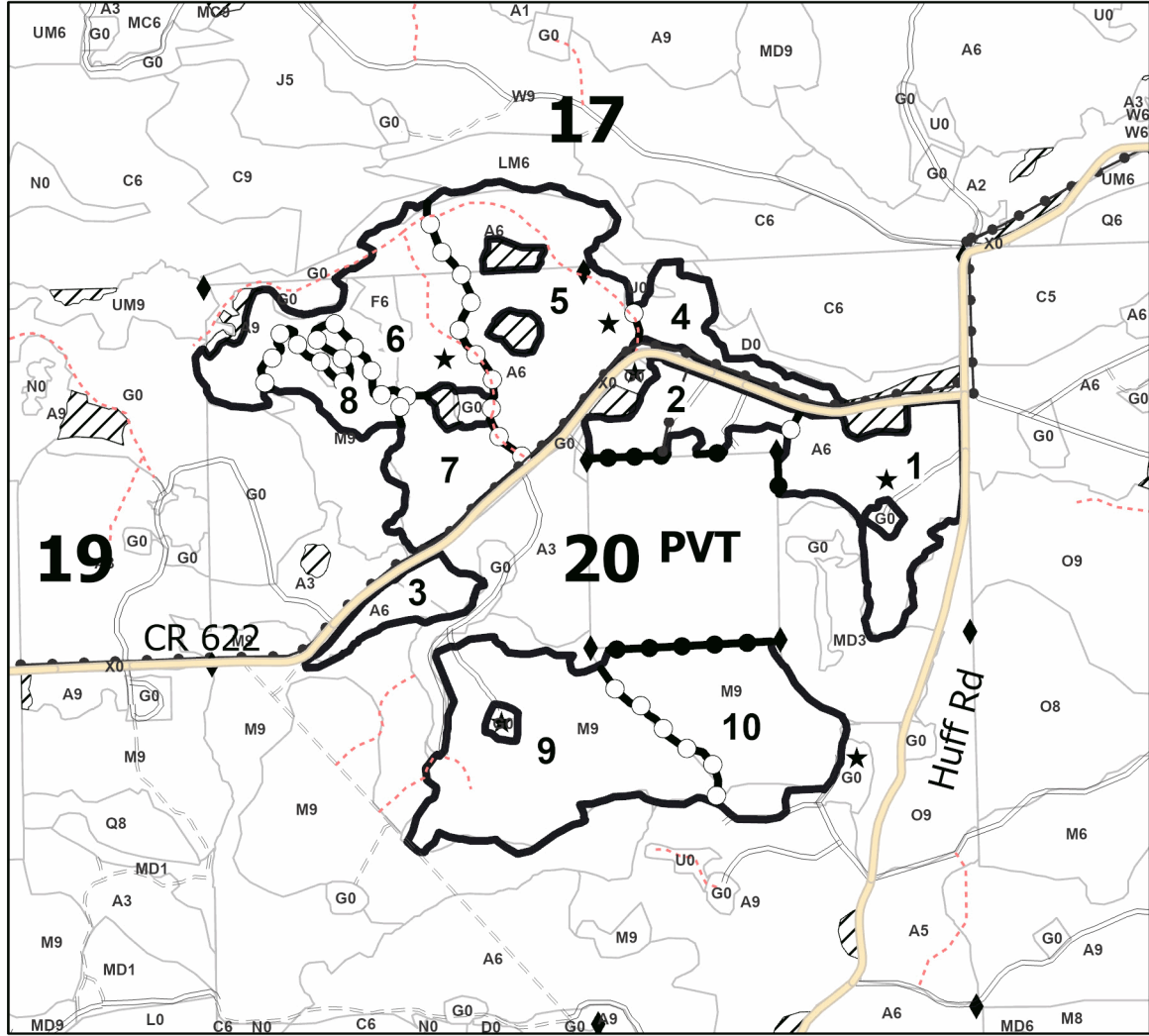
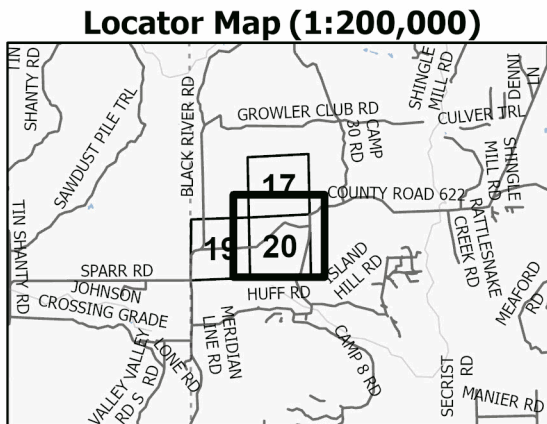
Cover Type			
A = Aspen	J = Jack Pine	O = Oak	U = Upland Brush
B = Paper Birch	K = Rock	P = Lowland Poplar	UM = Upland Mix Forest
C = Cedar	L = Lowland Brush	Q = Mixed Swamp Conifer	V = Bog or Marsh
D = Treed Bog	LM = Lowland Mix Forest	R = Red Pine	W = White Pine
E = Swamp Hardwoods	M = Maple, Beech, Birch	S = Black Spruce	X = Non Stocked
F = Spruce/Fir	MC = Mixed Conifer	T = Tamarack	Y = Sand
G = Grass	MD = Mixed Deciduous	Z = Water	
H = Hemlock	N = Marsh		

Density	
0 = Non Stocked	5 = Pole Timber Medium
1 = Seedling Sapling Poor	6 = Pole Timber Well
2 = Seedling Sapling Medium	7 = Saw Timber Poor
3 = Seedling Sapling Well	8 = Saw Timber Medium
4 = Pole Timber Poor	9 = Saw Timber Well

PU #	Acres	PU #	Acres
1	24.1	6	29.3
2	12	7	13.3
3	7.3	8	8.2
4	8.8	9	42.4
5	36.2	10	28

## Huff and 622 West Aspen HWD

209.6 Acres



Legend	
	Against State (Red)
	Stand
	Retention Areas
	Payment Unit (Yellow)
	Private Line (Blue)
	Secondary Forest Road
	Forest Access Route
	Administrative Access Only
	Non-DNR Road
	Powerline
	Landing
	Survey Grade Corner

