



**DEPARTMENT OF NATURAL RESOURCES
STATE OF MICHIGAN
TIMBER SALE PROSPECTUS #7552**

SCHEDULED SALE DATE AND TIME: **10:00 a.m. (local time) on March 18, 2025.**

LOCATION: **ATLANTA MGMT UNIT, 13501 M 33, ATLANTA, MI 49709.**

CONTACT NAME: Matt Foster

PHONE NUMBER: (989) 619-5921

PROSPECTUS NOTE: The bidder is advised to inspect the sale area and review the location, estimated volumes, operating costs and contract terms of proposed sales. Please be aware that some landowners may request 60 days or more notice for access across their land.

Notice is hereby given that bids will be received by the Unit Manager, ATLANTA MANAGEMENT UNIT, for certain timber on the following described lands:

Higgle Wiggle Red Pine (54-032-24) / T36N, R01E, SEC. 11, SW,SE.
T36N, R01E, SEC. 14, NENW,NWNE.

Cheboygan County, Advertised Price \$279,309.15, 195.5 Acres, Red Oak, Red Pine.

SALE NOTE: To facilitate subsequent planting operations, Payment Units 1-7 must be chip harvested (spec 2.2.2) and stump heights shall not exceed six (6) inches (spec 2.2.3). A chipping exemption can be obtained if proposed operations are determined to be suitable for planting by reforestation staff. 'Soft' oak wilt restriction(s) have been applied to all units (spec 5.2.3.5). Unless changed by written agreement, only one (1) Payment Unit may be operated at any one time. All contractual requirements on a Payment Unit shall be completed and accepted by the Unit Manager or his/her representative prior to the opening of an additional Payment Unit (spec 3.6.3).

A recreation site such as a trail, pathway, or campground is within the sale area or the vicinity. Certain restrictions/specifications may be applicable including time restrictions.

TIMBER SALE INFORMATION

Higgle Wiggle Red Pine (54-032-24)
 T36N, R01E, SEC. 11; T36N, R01E, SEC. 14.
 Cheboygan County (Advertised Price \$279,309.15)

SALE NOTE: To facilitate subsequent planting operations, Payment Units 1-7 must be chip harvested (spec 2.2.2) and stump heights shall not exceed six (6) inches (spec 2.2.3). A chipping exemption can be obtained if proposed operations are determined to be suitable for planting by reforestation staff. 'Soft' oak wilt restriction(s) have been applied to all units (spec 5.2.3.5). Unless changed by written agreement, only one (1) Payment Unit may be operated at any one time. All contractual requirements on a Payment Unit shall be completed and accepted by the Unit Manager or his/her representative prior to the opening of an additional Payment Unit (spec 3.6.3).

A recreation site such as a trail, pathway, or campground is within the sale area or the vicinity. Certain restrictions/specifications may be applicable including time restrictions.

A timber sale contract for this lump sum, sealed bid timber sale will be awarded to the responsible bidder offering the highest sealed bid price. All units of volume listed below were estimated using the Inventory Manager computer program and the new Michigan taper model. Bids must be at or above the following advertised price for each product and species:

<u>PRODUCTS & SPECIES</u>	<u>ESTIMATED UNITS*</u>	<u>ADVERTISED PRICE</u>
Sawtimber		
Red Oak	170.6 MBF	\$ 182.00 / MBF
Pulpwood		
B. T. Aspen	57 Cords	\$ 19.40 / Cord
Jack Pine	16 Cords	\$ 13.30 / Cord
Red Maple	9 Cords	\$ 19.80 / Cord
Red Oak	563 Cords	\$ 23.65 / Cord
Red Pine	6,359 Cords	\$ 36.55 / Cord
White Pine	37 Cords	\$ 27.75 / Cord

* The total volume is statistically estimated within plus (+) or minus (-) 10.04 percent. There are an estimated 7,444 cords on this timber sale, plus or minus 748 cords at the 95% confidence level. The estimated units are final and not subject to adjustment. Prospective bidders are urged to examine this timber and to make their own estimates of quantity and quality.

BOND AND PAYMENT SCHEDULE:

1. A bond in the amount of \$13,965.46 to insure faithful performance of the conditions of the contract will be deposited by the successful bidder within 21 days of the sale award.
2. Cutting in any sale or unit without the required advance payment would be considered a trespass.
3. Total payment must be paid in advance or according to the following schedule :
 - (a) Ten percent (10%) of the sale value must be paid within 21 days of the sale award.
 - (b) The 10% down payment will be credited towards the first unit cut.
 - (c) Payment for each of the following units must be made before cutting begins in that unit:

PAYMENT UNIT NUMBER	PERCENT OF TOTAL SALE VALUE
01	11.8%
02	16.4%
03	17.3%
04	10.4%
05	16.5%
06	18.4%
07	9.2%
4. If no cutting takes place, the 10% down payment will not be refunded.
5. Operations on the contract issued will terminate on 06/30/2028.

SALE STATISTICS

Volumes were calculated in cubic feet using the Michigan taper model. Cubic foot volume includes all wood inside bark for the product indicated. For display purposes, cubic feet were converted to cords and MBF using a simple conversion factor, e.g. 79 cubic feet per cord and 185 cubic feet per MBF. The cubic foot volumes are precise; the cords and MBF volumes are not. Cubic foot volume cannot be directly converted to cords or boards with precision.

SALE VOLUMES

The total estimated sale volume may not equal the sum of the species/products due to the nature of statistical calculations associated with double sampling methodology.

VOLUME			STATISTICAL RANGE IN CORDS	
TOTAL CUBIC FEET	TOTAL CORDS	PERCENT ERROR	MINIMUM	MAXIMUM
588,096	7,444	10.04%	6,697	8,192

VDU VOLUMES

A VDU is a Volume Determination Unit. Volumes and their associated statistics are calculated at the VDU level and summarized to the sale level. There is often a one to one relationship between a VDU and a Payment Unit, but not always, depending on the cruise design. Refer to the VDU TO PAYMENT UNIT table.

	VOLUME			RANGE IN CORDS	
VDU	TOTAL CUBIC FEET	TOTAL CORDS	PERCENT ERROR	MINIMUM	MAXIMUM
11	73,633	932	15.91%	784	1,080
20	514,463	6,512	11.28%	5,777	7,247
TOTAL:	588,096	7,444		6,561	8,327

VDU TO PAYMENT UNIT

When a VDU is associated with more than one Payment Unit (PU), the VDU volumes are assigned to the PU based on acres of the VDU within the PU.

VDU	VDU ACRES	PU	PU ACRES
11	20.5	1	20.5
20	175.0	2	32.6
20	175.0	3	34.3
20	175.0	4	20.7
20	175.0	5	32.7
20	175.0	6	36.4
20	175.0	7	18.3
TOTAL:	1,070.5		195.5

DESCRIPTION OF TIMBER BY PU (PU)

PU	MARKET GROUP	PRODUCT	QUANTITY	UNIT	ACRES	ADVERTISE PRICE
1	Red Oak	Sawtimber	5.8	MBF	20.5	\$33,048.35
	B. T. Aspen	Pulpwood	53	Cords		
	Jack Pine		12	Cords		
	Red Oak		15	Cords		
	Red Pine		824	Cords		
	White Pine		12	Cords		
	<i>White Pine</i>		12	<i>Cords</i>		
2	Red Oak	Sawtimber	30.7	MBF	32.6	\$45,893.80
	B. T. Aspen	Pulpwood	1	Cords		
	Jack Pine		1	Cords		
	Red Maple		2	Cords		
	<i>Red Maple</i>	<i>Sawtimber</i>	<i>0.5</i>	<i>MBF</i>		
	<i>Red Maple</i>	<i>Pulpwood</i>	<i>1</i>	<i>Cords</i>		
	Red Oak		102	Cords		
	Red Pine		1,031	Cords		
	White Pine		5	Cords		
	<i>White Pine</i>	<i>Sawtimber</i>	<i>0.8</i>	<i>MBF</i>		
	<i>White Pine</i>	<i>Pulpwood</i>	<i>3</i>	<i>Cords</i>		
3	Red Oak	Sawtimber	32.3	MBF	34.3	\$48,276.95
	B. T. Aspen	Pulpwood	1	Cords		
	Jack Pine		1	Cords		
	Red Maple		2	Cords		
	<i>Red Maple</i>	<i>Sawtimber</i>	<i>0.5</i>	<i>MBF</i>		
	<i>Red Maple</i>	<i>Pulpwood</i>	<i>1</i>	<i>Cords</i>		
	Red Oak		107	Cords		
	Red Pine		1,085	Cords		
	White Pine		5	Cords		
	<i>White Pine</i>	<i>Sawtimber</i>	<i>0.8</i>	<i>MBF</i>		
	<i>White Pine</i>	<i>Pulpwood</i>	<i>3</i>	<i>Cords</i>		
4	Red Oak	Sawtimber	19.5	MBF	20.7	\$29,129.55
	Red Maple	Pulpwood	1	Cords		
	<i>Red Maple</i>	<i>Sawtimber</i>	<i>0.3</i>	<i>MBF</i>		
	Red Oak	Pulpwood	65	Cords		
	Red Pine		655	Cords		
	White Pine		3	Cords		
	<i>White Pine</i>	<i>Sawtimber</i>	<i>0.5</i>	<i>MBF</i>		
<i>White Pine</i>	<i>Pulpwood</i>	<i>2</i>	<i>Cords</i>			
5	Red Oak	Sawtimber	30.8	MBF	32.7	\$46,021.65
	B. T. Aspen	Pulpwood	1	Cords		
	Jack Pine		1	Cords		
	Red Maple		2	Cords		
	<i>Red Maple</i>	<i>Sawtimber</i>	<i>0.5</i>	<i>MBF</i>		
	<i>Red Maple</i>	<i>Pulpwood</i>	<i>1</i>	<i>Cords</i>		
	Red Oak		102	Cords		
	Red Pine		1,034	Cords		
	White Pine		5	Cords		
	<i>White Pine</i>	<i>Sawtimber</i>	<i>0.8</i>	<i>MBF</i>		
	<i>White Pine</i>	<i>Pulpwood</i>	<i>3</i>	<i>Cords</i>		
6	Red Oak	Sawtimber	34.3	MBF	36.4	\$51,270.20
	B. T. Aspen	Pulpwood	1	Cords		
	Jack Pine		1	Cords		
	Red Maple		2	Cords		
	<i>Red Maple</i>	<i>Sawtimber</i>	<i>0.6</i>	<i>MBF</i>		
	<i>Red Maple</i>	<i>Pulpwood</i>	<i>1</i>	<i>Cords</i>		
	Red Oak		115	Cords		

DESCRIPTION OF TIMBER BY PU (PU), CON'T

PU	MARKET GROUP	PRODUCT	QUANTITY	UNIT	ACRES	ADVERTISE PRICE
6 con't	Red Pine	Pulpwood	1,151	Cords		
	White Pine		6	Cords		
	<i>White Pine</i>	<i>Sawtimber</i>	<i>0.8</i>	<i>MBF</i>		
	<i>White Pine</i>	<i>Pulpwood</i>	<i>4</i>	<i>Cords</i>		
7	Red Oak	Sawtimber	17.2	MBF	18.3	\$25,743.95
	Red Maple	Pulpwood	1	Cords		
	<i>Red Maple</i>	<i>Sawtimber</i>	<i>0.3</i>	<i>MBF</i>		
	Red Oak	Pulpwood	57	Cords		
	Red Pine		579	Cords		
	White Pine		3	Cords		
	<i>White Pine</i>	<i>Sawtimber</i>	<i>0.4</i>	<i>MBF</i>		
	<i>White Pine</i>	<i>Pulpwood</i>	<i>2</i>	<i>Cords</i>		
TOTAL:			170.6	MBF		
TOTAL:			7,044	Cords		

Sale Specific Conditions & Requirements

Sale Name: Higgle Wiggle Red Pine

Sale Number: 54-032-24 Seq#: 2

1 - Sale Area

1.2 - Boundaries

1.2.1 - Painted Boundaries (9/19)

The sale boundary and Payment Unit boundaries are marked and identified by red and yellow paint as well as some forest roads (see Timber Sale Map). Exterior sale boundary lines against state are marked with red paint, with the exception of the western boundary of Payment Unit 1 and the northern boundary of Payment Unit 2-4, which are unpainted and designated by the forest road (see Timber Sale Map). Interior Payment Unit boundaries are marked with yellow paint, with the exception of the interior Payment Unit boundaries between Payment Units 3-4 and 6-7, which is unpainted and designated by Snowmobile Trail 99 (see Timber Sale Map). Interior retention islands are marked with Red Painted X's and are shown on the Sale Map. Boundary excluded retention areas are present and shown on the Sale Map. No harvesting activities may occur within designated retention areas. The red and red + yellow painted boundary line trees are not Included Timber and are to be protected. Yellow (only) painted trees designating an interior Payment Unit boundary are only to be cut when all surrounding Payment Units have been paid.

2 - Timber Specifications

2.1 - Included Timber

2.1.1 - Clearcut Unit(s) with Unmerchantable Trees (6/14)

Within Payment Unit(s) 1-7, cut all trees that are two (2) inches or more at DBH, except do not cut any trees marked with green paint.

Special protection trees identified in accordance with condition 3.4.2, within clearcutting unit boundaries, are not Included Timber and are to be protected.

2.2 - Utilization

2.2.2 - Chipping required (2/18)

Payment Units 1-7 must be chip harvested to facilitate subsequent planting operations. The Purchaser has the option to produce sawlogs or pulpwood bolts, but the remaining portion of the trees must be chipped and hauled. If market conditions limit the practicality of chipping, tops and slash must be arranged in a way that will not inhibit future planting operations, as directed by the Sale Administrator. A chipping exemption can be obtained if proposed operations are determined to be suitable for planting by reforestation staff. The requirement to retain approximately 1/6 to 1/3 of tree tops and limbs less than four inches in diameter is still applicable (G. C. & R. 2.2).

2.2.3 - Stump heights (4/07)

Stump heights within Payment Units 1-7 shall not exceed 6 inches for all trees. This is in order to facilitate planting operations.

3 - Payments

3.3 - Pre-measured Sales

3.3.4 - Dividing Payment Units (7/14)

Payment Unit(s) 1-7 may be divided at the request of the Purchaser and upon approval of the Unit Manager. Dividing Payment Units is a contract modification which requires a Timber Sale Contract Amendment. Payment Units 1, 4 and 7 can only be divided once (1). Payment Units 2, 3, 5 and 6 can only be divided twice (2).

3.4 - Damaged Timber

3.4.1 - Damaged timber (7/16)

General Condition and Requirement 3.4 Damaged Timber, defines liquidated damages for undesignated live merchantable trees which are cut or injured.

No damage is acceptable to undesignated live merchantable trees and designated retention areas. Within the Sale Area, if more than 5% of trees (> 4.5" DBH) within a specified area of the sale are damaged, liquidated damages will be assessed for all trees damaged. Rates will be in accordance with General Condition and Requirement 3.4 Damaged Timber.

3.4.2 - Special Protection Trees (1/25)

The Purchaser shall not cut live or dead special protection trees within cutting units or clearings. Special protection trees are some of the green painted red oak and red pine trees meeting Legacy tree standards. Though not prevalent, green painted Legacy trees are present in Payment Units 1-7. Legacy trees are longer-lived tree species that are 150 years old or older; OR are 26 inches or greater at DBH, and in either case will exhibit some of the following characteristics: presence of hollows and cavities, super-canopy crown position, broken tops with crown debris accumulations and/or partial snag formation, plate-like or thick fire-resistant bark and/or fire scars and basal burn cavities. If Purchaser's operations have cut or damaged special protection trees through carelessness, the Purchaser shall pay \$500.00 as fixed, agreed and liquidated damages for each special protection tree cut or damaged. Such payment does not constitute ownership of the undesignated timber.

3.6 - Payment Unit Cutting Schedule

3.6.3 - Operating Schedule (12/08)

Unless changed by written agreement, only two (2) Payment Unit(s) may be operated at any one time. All contractual requirements on a Payment Unit shall be completed and accepted by the Unit Manager or his/her representative prior to the opening of an additional Payment Unit.

4 - Transportation

4.1 - Construction

4.1.3 - Slash and Earthen Piles (8/04)

Piles or windrows of earth along roads and landings that have been widened or constructed shall be leveled. Slash from road maintenance or construction, including stumps, shall be chipped, utilized or dispersed throughout the Sale Area as directed by the Sale Administrator so as not to impede follow-up replanting operations.

4.1.4 - Timber Removed for Construction (3/23)

Trees cut or damaged in the process of pre-approved road, landing, or skid trail construction will be decked in an area separate from other Designated Timber and not removed until measured by the Sale Administrator. Payment will be made at contract prices or average prices, if not on the contract.

4.1.6 - Road Construction (4/24)

Construction of new roads or improvements of existing roads shall be done in such a way as to minimize the environmental and visual impacts. Merchantable trees shall be cut and utilized unless otherwise directed. Non-merchantable trees shall be severed and laid flat on the ground. Slash shall be scattered, and not left in windrows and kept a minimum of 10 feet back from the road edge. Stumps shall be set upright, not left on edge, and be moved at least 10 feet away from the road edge. Disturbed soil shall be feathered into the woods and not left in berms or windrows.

4.1.7 - Road Closure (10/11)

New roads or overgrown roads that are reopened must be blocked to vehicle traffic within 30 days of completion of hauling. In general, this will require constructing a four (4') foot high berm of stumps and logs covered with earth. Stumps and brush must be placed along the remainder of the trail. These roads must be rendered impassable to cars and trucks. All stumps from road building and landing construction must be reserved to block any newly constructed roads upon completion of the sale. These stumps must be scattered along the road system to prohibit vehicular movement. Temporary berms may be required if no sale activity occurs for 30 or more consecutive days. Contact the Sale Administrator for specific details of design and placement.

4.2 - Maintenance

4.2.2 - Fill Material (4/07)

To maintain roads, fill material may be needed in areas where "holes" exist or may be expected to develop. This fill material should be placed before trucking begins. The Unit Manager or his/her representative must approve the type of fill material used prior to placement. In general, suitable fill material includes cobble and/or crushed rock. Fill material may not be sourced from adjacent State-owned lands.

4.2.4 - Grading (10/16)

If deemed necessary by the Sale Administrator, state forest roads must be graded after hauling operations are complete. In general, this will require a road grader or bulldozer to shape up the roads after forest products have been hauled off site. The grading equipment to be used must be approved by the Unit Manager or his/her representative.

4.2.5 - Two Wheel Drive Condition (2/04)

All existing trail roads on and adjacent to the Sale Area must be passable by two-wheel drive traffic for the duration of the sale.

5 - Operations

5.1 - Notification

5.1.1 - Pre-sale Conference (10/16)

A pre-sale conference between the Purchaser and Sale Administrator is required prior to beginning any operations to determine landing and road locations. The Unit Manager or his/her representative must be contacted at least 5 days in advance to schedule the conference.

5.2 - Conduct of Operations

5.2.1 - Slash

5.2.1.8 - Slash Height (12/08)

No slash or tree tops may exceed 24 inches in height.

5.2.1.10 - No Slash in Openings (5/10)

No brush or logging debris is to be left in adjacent stands that are being planted or left to naturally regenerate. These areas/stands are indicated by G0 on the Timber Sale Map. Any damage to the opening shall be repaired according to specifications of the Unit Manager or his/her representative.

5.2.2 - Hazard Trees/Snags

5.2.2.1 - Den Trees (10/16)

Obvious hollow and/or den trees shall be protected and left standing unless they are a safety hazard.

5.2.3 - Operating Restrictions

5.2.3.5 - Oak Wilt Restriction (1/18)

Within Payment Units 1-7, unless changed by written agreement, cutting, skidding, hauling within the sale and brushing of access roads to the sale are not permitted during the period of April 15 to July 15. Operations may be allowed if specific steps are taken to prevent damaging uncut oak during the high-risk period. Those steps may include completing all road brushing before April 15 and clearing a tree-length buffer along uncut oak cover before April 15. This is necessary to reduce the spread of oak wilt. For more information, contact the Unit Manager or his/her representative.

5.2.3.6 - Bark Beetle Restriction (1/25)

In the event drought creates a high risk of pine bark beetle infestation, pine is not to be cut during the period March 1 through July 1, unless all portions of trees greater than two (2) inches in diameter are removed from the Sale Area, reduced to chips, or treated to the satisfaction of the Unit Manager or his/her representative, within 15 days of being severed from the stump. Pine log decks, pulpwood piles and treetops that are piled for chipping in the fall or winter within a 1/4 mile of susceptible sites must be removed before March 15. Residual slash must not be placed in piles or rows and must be spread over the site for quick drying. The Department of Natural Resources will exercise this specification if the risk of damage warrants.

5.2.4 - Dead and Down Creation

5.2.4.3 - Dead and Down Creation, Dead Trees (6/07)

Except as provided for in General Condition and Requirement 5.2.2, no dead trees, standing or down, are to be cut, skidded, or processed.

5.2.31 - Landing Locations (9/13)

Landings will not be allowed within any island or boundary excluded retention area(s). The Timber Sale Map shows the

retention locations.

5.2.32 - Decking/Landing Restoration (9/13)

All decking and landing areas must have the surface area restored to a condition equal to or better than before. This is to ensure the proper regeneration of the stand. Wood debris, chips and "cookies" from trimmings must be removed or scattered away from landing and loading areas and may not be windrowed on the edge.

5.2.38 - No Decking Against Live Trees (2/04)

Cut products may not be decked against unmarked or designated leave trees.

5.2.39 - ORV Trail/Route Protection (4/18)

Black Lake ORV Trail travels through Payment Units 3, 6 and 7 and is shown on the Timber Sale Map. Do not damage any carsonite posts with yellow ORV markers. Trees with yellow ORV markers shall be cut off above the markers and at least 5 feet above ground. All stumps within 5 feet of the trail must be cut flush with the ground. Maintain a 10-foot-wide slash, debris, and rut free zone daily using the ORV trail or route as the centerline. Do not run equipment down the ORV trail or route. Skidding across the trail or route may only occur in locations approved by the Sale Administrator.

5.2.40 - Pathway Protection (10/10)

The Black Mountain Recreational Trail is a bike, hiking, horse, ski trail and is shown on the Timber Sale Map. The Black Mountain Trail is located near the east boundary of Payment Units 4 and 7. The Trail does not travel through the sale. Be vigilant for trail users during all operations, especially those in Payment Units 4 and 7.

5.2.41 - Snowmobile Trail Protection (9/11)

Snowmobile Trail 99 travels north/south through the east portion of the timber sale. Trail 99 is shown on the Timber Sale Map. Do not cut or damage posts with orange trail markers or traffic control signs. If the trail is used, it must be maintained and restored to a condition equal to or better than before the sale. The road maintenance/restoration must be done prior to December 1. If the trail is used for hauling, it must be graded to the satisfaction of the Unit Manager or his/her representative prior to December 1. If the trail road is to be used for hauling during the snowmobile season, then a snow-covered base must be left on the trail. The snowmobile trail may only be crossed at right angles. Maintain a 10-foot-wide slash, debris, and rut free zone daily using the snowmobile trail as the centerline. No decking of forest products will be permitted along the snowmobile trail. All stumps within 10 feet of the snowmobile trail must be cut at ground level.

5.4 - Soil Protection

5.4.1 - Rutting Restriction, General (7/16)

Operations are to cease immediately if equipment and weather conditions result in rutting of roads and/or skid trails which is 12 inches or greater in depth and 25 feet in length. The Unit Manager or his/her representative may restrict hauling and/or skidding if ruts exceed the specified depth. With the Unit Manager or his/her representative's approval, the Purchaser may return to the area when the risk of rutting has decreased.

5.8 - Protection of Endangered Species

5.8.5 - Protection of Raptor Nests (3/13)

All trees with raptor nests will be protected if found during harvesting operations. Notification will be made to the Unit Manager or his/her representative who will notify the Wildlife Biologist so an onsite evaluation and recommendation can be made, if necessary.

6 - Safety and Fire Prevention

6.2 - Signing

6.2.1 - Road Posting (10/20)

The Purchaser is responsible for posting and maintaining caution signs on hauling routes prior to beginning operations. The road must be posted at appropriate distances from the Sale Area to warn of logging activity and truck traffic. Signs must be removed when harvest operations are suspended or completed. The Purchaser will provide these signs.

6.2.2 - Snowmobile Trail Posting (10/20)

The Purchaser is responsible for posting and maintaining caution signs on Trail 99 prior to beginning operations during the snowmobile season (approximately December 1 to March 31). The trail must be posted at appropriate distances from the Sale Area to warn of logging activity and truck traffic. Signs must be removed when harvest operations are suspended or

completed. The Purchaser will provide these signs.

6.2.3 - Recreational Trail Posting (10/20)

The Purchaser is responsible for posting and maintaining caution signs on Black Mountain Recreation Trail prior to beginning operations. The trail must be posted at appropriate distances from the Sale Area to warn of logging activity and truck traffic at both ends of the trail. Signs must be removed when harvest operations are suspended or completed. The Purchaser will provide these signs.



TIMBER SALE MAP

This information provided by authority of Part 525, 1994 PA 451, as amended.

Sale Number	Date	
54-032-24	10/30/2024	
Scale	Page	Of
1:15,840	1	1

Forest Management Unit	County	Mapped By: TSP
Atlanta Mgt Unit	Cheboygan	Cruised By: J. St. Pierre, TSP

Township	Range	Section(s) and Subdivision(s)
36N	01E	Sec. 11 SW,SE; Sec. 14 NENW,NWNE;

Cover Type			
A = Aspen	J = Jack Pine	O = Oak	U = Upland Brush
B = Paper Birch	K = Rock	P = Lowland Poplar	UM = Upland Mix Forest
C = Cedar	L = Lowland Brush	Q = Mixed Swamp Conifer	V = Bog or Marsh
D = Treed Bog	LM = Lowland Mix Forest	R = Red Pine	W = White Pine
E = Swamp Hardwoods	M = Maple, Beech, Birch	S = Black Spruce	X = Non Stocked
F = Spruce/Fir	MC = Mixed Conifer	T = Tamarack	Y = Sand
G = Grass	MD = Mixed Deciduous	Z = Water	
H = Hemlock	N = Marsh		

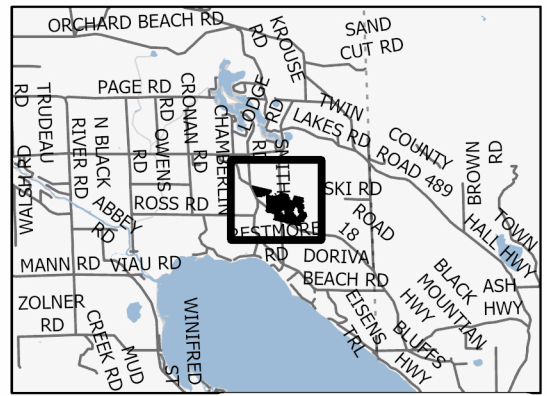
Density	
0 = Non Stocked	5 = Pole Timber Medium
1 = Seedling Sapling Poor	6 = Pole Timber Well
2 = Seedling Sapling Medium	7 = Saw Timber Poor
3 = Seedling Sapling Well	8 = Saw Timber Medium
4 = Pole Timber Poor	9 = Saw Timber Well

PU #	Acres	PU #	Acres
1	20.5	5	32.7
2	32.6	6	36.4
3	34.3	7	18.3
4	20.7		

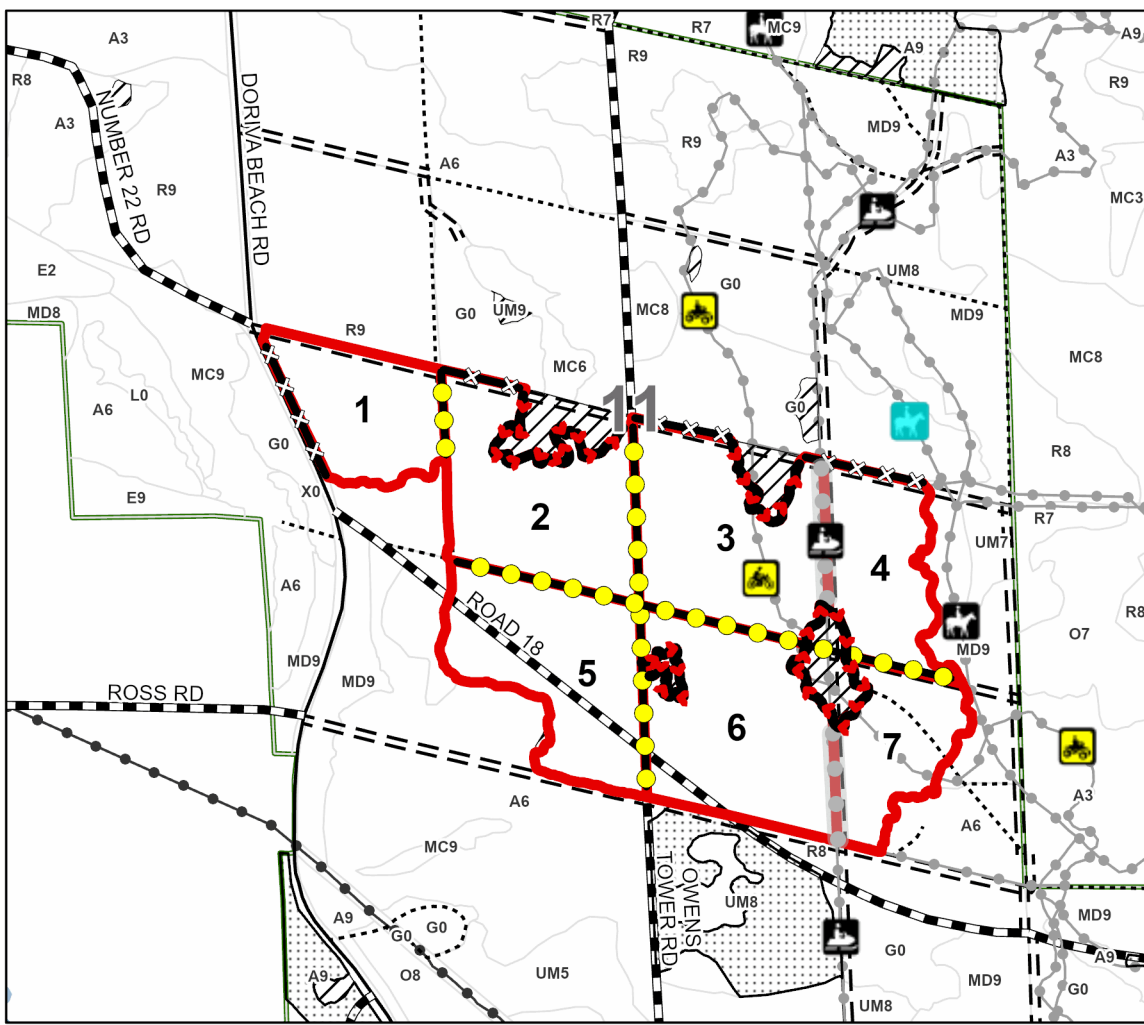
Higgle Wiggle Red Pine

195.5 Acres

Locator Map 1:200,000



Compartment 176



Legend

- Sale Boundary (Red)
- Against State (Red X)
- Against State (Unpainted)
- Payment Unit (Yellow)
- Payment Unit (Unpainted)
- Stand
- Retention Areas
- Forest Access Route
- Administrative Access Only
- Paved Road
- Government Gravel/Dirt
- Recreational Trails
- Powerline

Use QR Code to open Map in App

