



**DEPARTMENT OF NATURAL RESOURCES  
STATE OF MICHIGAN  
TIMBER SALE PROSPECTUS #7534**

SCHEDULED SALE DATE AND TIME: **10:00 a.m. (local time) on January 21, 2025.**

LOCATION: **ATLANTA MGMT UNIT, 13501 M 33, ATLANTA, MI 49709.**

CONTACT NAME: Matt Foster

PHONE NUMBER: (989) 619-5921

PROSPECTUS NOTE: The bidder is advised to inspect the sale area and review the location, estimated volumes, operating costs and contract terms of proposed sales. Please be aware that some landowners may request 60 days or more notice for access across their land.

Notice is hereby given that bids will be received by the Unit Manager, ATLANTA MANAGEMENT UNIT, for certain timber on the following described lands:

Rainy Mix (54-037-24) / T32N, R03E, SEC. 4 , NWNW,S1/2NW,NWSW.

Montmorency County, Advertised Price \$49,727.30, 37.3 Acres, Aspen, White Pine.

SALE NOTE: Seasonal restrictions limiting operations from October 1 to May 1 and frozen or dry ground requirements are in place in all Payment Units due to Eastern Massasauga Rattlesnake habitat.

## TIMBER SALE INFORMATION

Rainy Mix (54-037-24)

T32N, R03E, SEC. 4.

Montmorency County (Advertised Price \$49,727.30)

SALE NOTE: Seasonal restrictions limiting operations from October 1 to May 1 and frozen or dry ground requirements are in place in all Payment Units due to Eastern Massasauga Rattlesnake habitat.

A timber sale contract for this lump sum, sealed bid timber sale will be awarded to the responsible bidder offering the highest sealed bid price. All units of volume listed below were estimated using the Inventory Manager computer program and the new Michigan taper model. Bids must be at or above the following advertised price for each product and species:

<u>PRODUCTS &amp; SPECIES</u>	<u>ESTIMATED UNITS*</u>	<u>ADVERTISED PRICE</u>
Sawtimber		
Red Maple	23.1 MBF	\$ 60.00 / MBF
Red Oak	32.5 MBF	\$ 180.00 / MBF
Red Pine	61.0 MBF	\$ 128.00 / MBF
White Pine	65.3 MBF	\$ 97.00 / MBF
Pulpwood		
Balsam Fir	19 Cords	\$ 17.05 / Cord
Mixed Aspen	861 Cords	\$ 20.35 / Cord
Paper Birch	6 Cords	\$ 14.20 / Cord
Red Maple	177 Cords	\$ 20.70 / Cord
Red Oak	26 Cords	\$ 25.00 / Cord
Red Pine	40 Cords	\$ 37.25 / Cord
White Pine	166 Cords	\$ 27.80 / Cord

\* The total volume is statistically estimated within plus (+) or minus (-) 20.51 percent. There are an estimated 1,721 cords on this timber sale, plus or minus 353 cords at the 95% confidence level. The estimated units are final and not subject to adjustment. Prospective bidders are urged to examine this timber and to make their own estimates of quantity and quality.

### **BOND AND PAYMENT SCHEDULE:**

1. A bond in the amount of \$2,486.37 to insure faithful performance of the conditions of the contract will be deposited by the successful bidder within 21 days of the sale award.
2. Cutting in any sale or unit without the required advance payment would be considered a trespass.
3. Total payment must be paid in advance or according to the following schedule :
  - (a) Ten percent (10%) of the sale value must be paid within 21 days of the sale award.
  - (b) The 10% down payment will be credited towards the first unit cut.
  - (c) Payment for each of the following units must be made before cutting begins in that unit:
 

PAYMENT UNIT NUMBER	PERCENT OF TOTAL SALE VALUE
01	53.2%
02	46.8%
4. If no cutting takes place, the 10% down payment will not be refunded.
5. Operations on the contract issued will terminate on 06/30/2029.

### **SALE STATISTICS**

Volumes were calculated in cubic feet using the Michigan taper model. Cubic foot volume includes all wood inside bark for the product indicated. For display purposes, cubic feet were converted to cords and MBF using a simple conversion factor, e.g. 79 cubic feet per cord and 185 cubic feet per MBF. The cubic foot volumes are precise; the cords and MBF volumes are not. Cubic foot volume cannot be directly converted to cords or boards with precision.

### **SALE VOLUMES**

The total estimated sale volume may not equal the sum of the species/products due to the nature of statistical calculations associated with double sampling methodology.

VOLUME		STATISTICAL RANGE IN CORDS		
TOTAL CUBIC FEET	TOTAL CORDS	PERCENT ERROR	MINIMUM	MAXIMUM
135,982	1,721	20.51%	1,368	2,074

## VDU VOLUMES

A VDU is a Volume Determination Unit. Volumes and their associated statistics are calculated at the VDU level and summarized to the sale level. There is often a one to one relationship between a VDU and a Payment Unit, but not always, depending on the cruise design. Refer to the VDU TO PAYMENT UNIT table.

VDU	VOLUME		PERCENT ERROR	RANGE IN CORDS	
	TOTAL CUBIC FEET	TOTAL CORDS		MINIMUM	MAXIMUM
4	58,123	736	28.88%	523	948
5	77,859	986	29.15%	698	1,273
<b>TOTAL:</b>	<b>135,982</b>	<b>1,721</b>		<b>1,222</b>	<b>2,221</b>

## VDU TO PAYMENT UNIT

When a VDU is associated with more than one Payment Unit (PU), the VDU volumes are assigned to the PU based on acres of the VDU within the PU.

VDU	VDU ACRES	PU	PU ACRES
4	14.9	2	14.9
5	22.4	1	22.4
<b>TOTAL:</b>	<b>37.3</b>		<b>37.3</b>

## DESCRIPTION OF TIMBER BY PU (PU)

PU	MARKET GROUP	PRODUCT	QUANTITY	UNIT	ACRES	ADVERTISE PRICE
1	Red Maple	Sawtimber	11.1	MBF	22.4	\$26,449.10
	Red Oak		32.5	MBF		
	Red Pine		9.9	MBF		
	White Pine		12.5	MBF		
	Balsam Fir	Pulpwood	14	Cords		
	Mixed Aspen		642	Cords		
	<i>B. T. Aspen</i>		400	<i>Cords</i>		
	<i>Quaking Aspen</i>		242	<i>Cords</i>		
	Red Maple		108	Cords		
	Red Oak		22	Cords		
	Red Pine		12	Cords		
	White Pine	33	Cords			
	2	Red Maple	Sawtimber	12.0		
Red Pine		51.1		MBF		
White Pine		52.8		MBF		
Balsam Fir		Pulpwood	5	Cords		
Mixed Aspen			219	Cords		
<i>B. T. Aspen</i>			9	<i>Cords</i>		
<i>Quaking Aspen</i>			210	<i>Cords</i>		
Paper Birch			6	Cords		
<i>Paper Birch</i>			1.3	<i>MBF</i>		
<i>Paper Birch</i>			3	<i>Cords</i>		
Red Maple		69	Cords			
Red Oak		4	Cords			
Red Pine		28	Cords			
White Pine		133	Cords			
<b>TOTAL:</b>			181.9	MBF		
<b>TOTAL:</b>			1,295	Cords		

## Sale Specific Conditions & Requirements

Sale Name: Rainy Mix

Sale Number: 54-037-24 Seq#: 2

### 1 - Sale Area

#### 1.2 - Boundaries

##### 1.2.1 - Painted boundaries (9/19)

The sale boundary and Payment Unit boundaries are marked and identified by red paint and forest roads. Exterior sale boundary lines against state ownership are marked with red paint. Interior Payment Unit boundaries are unpainted and designated by the forest access road. Retention patches are marked with red paint; no harvesting activities may occur within these areas. The painted boundary line trees are not Included Timber and are to be protected.

### 2 - Timber Specifications

#### 2.1 - Included Timber

##### 2.1.1 - Clearcut unit(s) with unmerchantable trees (6/14)

Within Payment Unit(s) 1-2, cut all trees that are two (2) inches or more at DBH, except do not cut trees marked with green paint.

Special protection trees identified in accordance with condition 3.4.2, within clearcutting unit boundaries, are not Included Timber and are to be protected.

Orange marked habitat trees in Payment Unit 1 are to be handled as detailed in condition 5.2.4.7.

#### 2.2 - Utilization

##### 2.2.5 - Limbed tree skidding (1/09)

The skidding of whole trees or tree segments with limbs attached is prohibited unless approved by the Unit Manager or his/her representative.

##### 2.2.9 - No chipping permitted (12/08)

Within Payment Unit(s) 1-2, no chipping is permitted. Tops may not be chipped.

### 3 - Payments

#### 3.4 - Damaged Timber

##### 3.4.2 - Special Protection Trees (4/14)

The Purchaser shall not cut live or dead special protection trees within cutting units or clearings. Special protection trees are marked with green paint. If the Purchaser's operations have cut or damaged special protection trees through carelessness, the Purchaser shall pay \$500 as fixed, agreed and liquidated damages for each special protection tree cut or damaged. Such payment does not constitute ownership of the undesignated timber.

### 4 - Transportation

#### 4.1 - Construction

##### 4.1.3 - Slash and earthen piles (8/04)

Piles or windrows of earth along roads and landings that have been widened or constructed shall be leveled. Slash from road maintenance or construction, including stumps, shall be dispersed throughout the sale, or otherwise removed from the sale.

##### 4.1.6 - Road construction (4/24)

Improvements of existing roads shall be done in such a way as to minimize the environmental and visual impacts. Merchantable trees shall be cut and utilized unless otherwise directed. Non-merchantable trees shall be severed and laid flat on the ground. Slash shall be scattered, and not left in windrows and kept a minimum of 10 feet back from the road edge. Stumps shall be set upright, not left on edge, and be moved at least 10 feet away from the road edge. Disturbed soil shall be

feathered into the woods and not left in berms or windrows.

#### 4.1.12 - No new roads (1/12)

No new roads will be permitted in any Payment Unit. All operations are limited to existing roads. Skid trails only will be allowed.

### 4.2 - Maintenance

#### 4.2.1 - Hauling restriction (12/08)

Hauling may be restricted on forest roads by the Unit Manager or his/her representative. The restriction may occur during wet weather conditions.

#### 4.2.2 - Fill material (4/07)

To maintain roads, fill material may be needed in areas where "holes" exist or may be expected to develop. This fill material should be placed before trucking begins. Fill material must be approved by the Sale Administrator.

## 5 - Operations

### 5.1 - Notification

#### 5.1.1 - Pre-sale conference (10/16)

A pre-sale conference on site between the Purchaser and sale administrator is required prior to beginning any operations. The Unit Manager or his/her representative must be contacted at least 5 days in advance to schedule the conference.

#### 5.1.4 - Post-sale conference (10/16)

A post-sale conference on site between the Purchaser and sale administrator is required 5 days prior to the completion of active logging operations to determine clean-up and repair of landings, road edges, and the fulfillment of other contract specifications.

### 5.2 - Conduct of Operations

#### 5.2.1 - Slash

##### 5.2.1.10 - No slash in openings (5/10)

No brush or logging debris is to be left in the adjacent upland brush stand which is indicated by U0 on the Timber Sale Map. Any rutting shall also be repaired and openings left in as good as, or better condition than before the start of operations. Any damage to the opening shall be repaired according to specifications of the Unit Manager or his/her representative.

##### 5.2.1.13 - Dispose of slash as directed (12/05)

Slash is to be disposed of as directed by the Sale Administrator.

#### 5.2.2 - Hazard Trees/Snags

##### 5.2.2.1 - Den trees (10/16)

Obvious hollow and/or den trees shall be protected and left standing unless they are a safety hazard.

#### 5.2.3 - Operating Restrictions

##### 5.2.3.5 - Oak wilt restriction (1/18)

Within Payment Units 1-2, unless changed by written agreement, cutting, skidding, hauling within the sale and brushing of access roads to the sale are not permitted during the period of April 15 to July 15. Operations may be allowed if specific steps are taken to prevent damaging uncut oak during the high risk period. Those steps may include completing all road brushing before April 15th and clearing a tree-length buffer along uncut oak cover before April 15th. This is necessary to reduce the spread of oak wilt. For more information, contact the Unit Manager or his/her representative.

#### 5.2.4 - Dead and Down Creation

##### 5.2.4.5 - Dead and down creation, reptiles and amphibians (2/05)

To encourage reptiles and amphibians, within Payment Unit(s) 2, leave one, 14" DBH or greater full-length tree on the ground, with the top still intact, for every 5 acres. These trees shall be evenly scattered throughout the Payment Unit(s) and identified by blue flagging. There should be a total of three of these trees in the Payment Unit.

#### 5.2.4.6 - Dead and down creation, other (9/09)

To encourage reptiles and amphibians, within Payment Units 1-2, create one brush pile for every 2 acres. Brush piles must be at least 6 feet by 6 feet, with a thickness of 4 feet, and dense enough to substantially shade the ground. These brush piles will preferably be placed near lowland edges and at least 2 chains away from any roads, two-tracks, or trails open to vehicles.

#### 5.2.4.7 - Dead and down creation: hare, grouse, deer and other species (5/15)

To improve horizontal cover habitat for snowshoe hare, grouse, deer, and other species, the Purchaser is to push over all trees painted with orange paint within Payment Unit 1. These trees should be tipped over with the root ball still attached so the base of the tree is suspended off the ground. The crown of the fallen tree should be at or near ground level after it is pushed over.

#### 5.2.31 - Landing locations (9/13)

Recommended landing areas are marked on the Timber Sale Map with the letter "L". All landings used, whether recommended locations or not, must be approved by the Sale Administrator prior to use.

#### 5.2.32 - Decking/landing restoration (9/13)

All decking and landing areas must have the surface area restored to a condition equal to or better than before. This is to ensure the proper regeneration of the stand. Wood debris, chips and "cookies" from trimmings must be removed or scattered away from landing and loading areas and may not be windrowed on the edge.

#### 5.2.38 - No decking against live trees (2/04)

Cut products may not be decked against unmarked or designated leave trees.

### 5.8 - Protection of Endangered Species

#### 5.8.5 - Protection of raptor nests (3/13)

All trees with raptor nests will be protected if found during harvesting operations. Notification will be made to the Unit Manager or his/her representative who will notify the Wildlife Biologist so an on-site evaluation and recommendation can be made, if necessary.

#### 5.8.8 - Protected species, other (2/12)

Within Payment Units 1-2, no harvesting activities (cutting, forwarding, hauling, etc.) shall occur during the time period of May 1 to October 1. Additionally, the ground must be frozen or dry and firm. Wood cut during the operational period must be hauled prior to May 1. If Eastern Massasauga Rattlesnake are observed, they should be considered active regardless of date. This restriction is to protect the Eastern Massasauga Rattlesnake and its habitat.

## 6 - Safety and Fire Prevention

### 6.2 - Signing

#### 6.2.1 - Road posting (10/20)

The Purchaser is responsible for posting and maintaining caution signs on Hubert Road prior to beginning operations. The road must be posted at appropriate distances from the Sale Area to warn of logging activity and truck traffic. Signs must be removed when harvest operations are suspended or completed. The Purchaser will provide these signs.

## 7 - Other Conditions

### 7.2 - Extensions

#### 7.2.5 - Weather related extension (1/13)

If weather conditions during the operating period of this contract prevent harvesting, this sale may qualify for a weather related extension. If approved, the normal extension fee would be waived. To qualify, there must be a documented attempt each year to harvest in the difficult portion of the sale.



### TIMBER SALE MAP

This information provided by authority of Part 525, 1994 PA 451, as amended.

Sale Number  
**54-037-24**

Date  
**11/01/2024**

Forest Management Unit  
Atlanta Mgt Unit

County  
Montmorency

Mapped By: K. Beesley  
Cruised By: K. Beesley

Scale  
1:5,000

Page  
1

Of  
2

Township  
32N

Range  
03E

Section(s) and  
Subdivision(s) Sec. 4 NWNW,S1/2NW,NWSW;

#### Cover Type

A = Aspen	J = Jack Pine	O = Oak	U = Upland Brush
B = Paper Birch	K = Rock	P = Lowland Poplar	UM = Upland Mix Forest
C = Cedar	L = Lowland Brush	Q = Mixed Swamp Conifer	V = Bog or Marsh
D = Treed Bog	LM = Lowland Mix Forest	R = Red Pine	W = White Pine
E = Swamp Hardwoods	M = Maple, Beech, Birch	S = Black Spruce	X = Non Stocked
F = Spruce/Fir	MC = Mixed Conifer	T = Tamarack	Y = Sand
G = Grass	MD = Mixed Deciduous	Z = Water	
H = Hemlock	N = Marsh		

#### Density

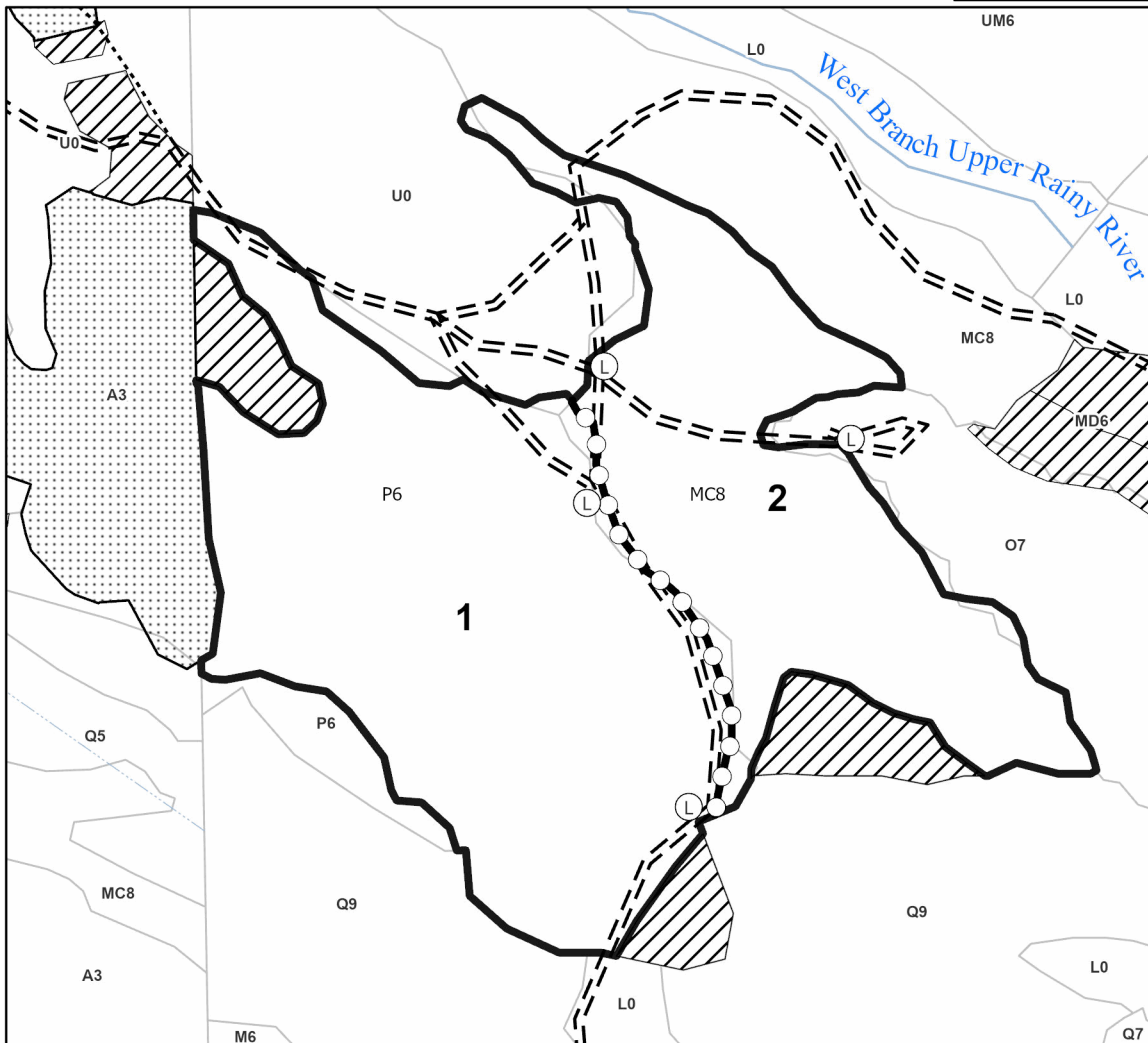
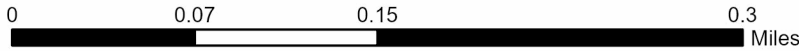
0 = Non Stocked	5 = Pole Timber Medium
1 = Seedling Sapling Poor	6 = Pole Timber Well
2 = Seedling Sapling Medium	7 = Saw Timber Poor
3 = Seedling Sapling Well	8 = Saw Timber Medium
4 = Pole Timber Poor	9 = Saw Timber Well

PU #	Acres
1	22.4
2	14.9

**Rainy Mix**  
**37.3 Acres**  
**Compartment 68**



#### Locator Map (1:200,000)



#### Legend

- Sale Boundary (Red)
- Nearby Timber Sale
- Stand
- Retention Areas
- Payment Unit (Road as Payment Unit Line)
- Primary Forest Road
- Forest Access Route
- Administrative Access Only
- Paved Road
- Government Gravel/Dirt
- Private Gravel/Dirt
- Potential Landing Sites

Use QR Code to open Map in App





### TIMBER SALE MAP

This information provided by authority of Part 525, 1994 PA 451, as amended.

Sale Number  
**54-037-24**

Date  
**11/01/2024**

Forest Management Unit  
Atlanta Mgt Unit

County  
Montmorency

Mapped By: K. Beesley  
Cruised By: K. Beesley

Scale  
1:15,840

Page  
2

Of  
2

Township  
32N

Range  
03E

Section(s) and  
Subdivision(s) Sec. 4 NWNW,S1/2NW,NWSW;

#### Cover Type

A = Aspen	J = Jack Pine	O = Oak	U = Upland Brush
B = Paper Birch	K = Rock	P = Lowland Poplar	UM = Upland Mix Forest
C = Cedar	L = Lowland Brush	Q = Mixed Swamp Conifer	V = Bog or Marsh
D = Treed Bog	LM = Lowland Mix Forest	R = Red Pine	W = White Pine
E = Swamp Hardwoods	M = Maple, Beech, Birch	S = Black Spruce	X = Non Stocked
F = Spruce/Fir	MC = Mixed Conifer	T = Tamarack	Y = Sand
G = Grass	MD = Mixed Deciduous	Z = Water	
H = Hemlock	N = Marsh		

#### Density

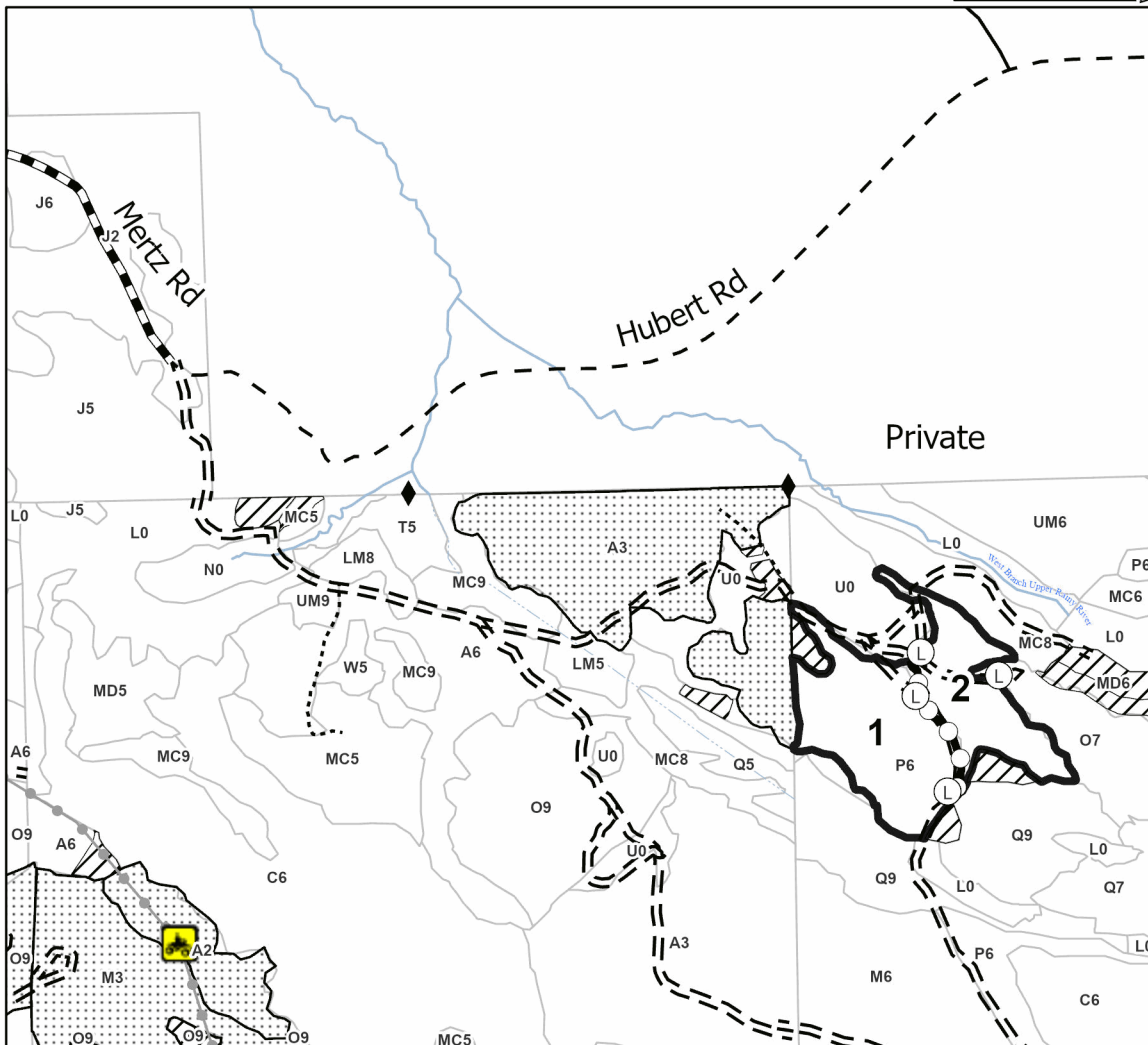
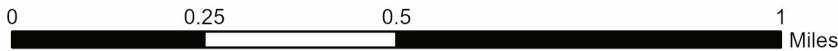
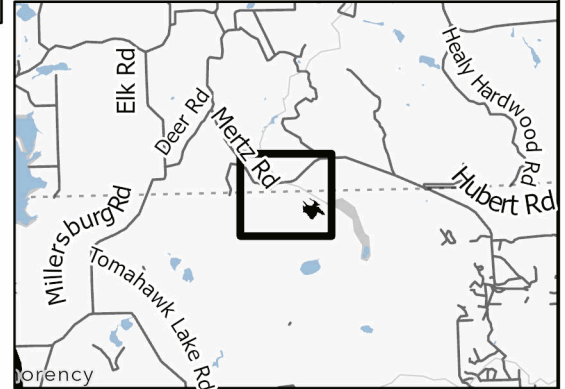
0 = Non Stocked	5 = Pole Timber Medium
1 = Seedling Sapling Poor	6 = Pole Timber Well
2 = Seedling Sapling Medium	7 = Saw Timber Poor
3 = Seedling Sapling Well	8 = Saw Timber Medium
4 = Pole Timber Poor	9 = Saw Timber Well

PU #	Acres
1	22.4
2	14.9

**Rainy Mix**  
**37.3 Acres**  
**Compartment 68**



#### Locator Map (1:200,000)



#### Legend

- Sale Boundary (Red)
- Nearby Timber Sale
- Stand
- Retention Areas
- Payment Unit (Road as Payment Unit Line)
- Recreational Trail
- Primary Forest Road
- Forest Access Route
- Administrative Access Only
- Paved Road
- Government Gravel/Dirt
- Private Gravel/Dirt
- Potential Landing Sites
- Field Grade Corner

Use QR Code to open Map in App

