



**DEPARTMENT OF NATURAL RESOURCES
STATE OF MICHIGAN
TIMBER SALE PROSPECTUS #7868**

SCHEDULED SALE DATE AND TIME: **9:00 a.m. (local time) on July 27, 2026.**

LOCATION: **GRAYLING MGMT UNIT, 1955 HARTWICK PINES ROAD, GRAYLING, MI 49738.**

CONTACT NAME: Tom Barnes

PHONE NUMBER: (231) 384-7732

PROSPECTUS NOTE: The bidder is advised to inspect the sale area and review the location, estimated volumes, operating costs and contract terms of proposed sales. Please be aware that some landowners may request 60 days or more notice for access across their land.

Notice is hereby given that bids will be received by the Unit Manager, GRAYLING MANAGEMENT UNIT, for certain timber on the following described lands:

Mason Tract RP (72-023-24) / T25N, R01W, SEC. 6 , NENW,NWNE,NESW,S1/2SW.

T26N, R01W, SEC. 31, S1/2NW,S1/2NE,SW,SE.

T26N, R01W, SEC. 32, NWSW.

Crawford County, Advertised Price \$66,197.75, 214.3 Acres, Hardwood, Red Pine.

SALE NOTE: Harvest equipment less than 10 feet wide is recommended because the sale has areas with narrow plantation row spacing. Payment Units 5 & 7 contain some steep ground. Payment Unit 8 is an Ecological Reference Area that is being harvested to facilitate prescribed burning, and chipping is required. The Mason Tract Pathway borders Payment Unit 8. Seasonal operating restrictions relating to Oak Wilt, Bark Slip, rare plants, Wood Turtle, and the Mason Tract have been applied.

A recreation site such as a trail, pathway, or campground is within the sale area or the vicinity. Certain restrictions/specifications may be applicable including time restrictions.

TIMBER SALE INFORMATION

Mason Tract RP (72-023-24)

T25N, R01W, SEC. 6; T26N, R01W, SEC. 31; T26N, R01W, SEC. 32.

Crawford County (Advertised Price \$66,197.75)

SALE NOTE: Harvest equipment less than 10 feet wide is recommended because the sale has areas with narrow plantation row spacing. Payment Units 5 & 7 contain some steep ground. Payment Unit 8 is an Ecological Reference Area that is being harvested to facilitate prescribed burning, and chipping is required. The Mason Tract Pathway borders Payment Unit 8. Seasonal operating restrictions relating to Oak Wilt, Bark Slip, rare plants, Wood Turtle, and the Mason Tract have been applied.

A recreation site such as a trail, pathway, or campground is within the sale area or the vicinity. Certain restrictions/specifications may be applicable including time restrictions.

A timber sale contract for this lump sum, sealed bid timber sale will be awarded to the responsible bidder offering the highest sealed bid price. All units of volume listed below were estimated using the Inventory Manager computer program and the new Michigan taper model. Bids must be at or above the following advertised price for each product and species:

<u>PRODUCTS & SPECIES</u>	<u>ESTIMATED UNITS*</u>	<u>ADVERTISED PRICE</u>
Sawtimber		
Northern Pin Oak	120.5 MBF	\$ 72.00 / MBF
Red Oak	21.3 MBF	\$ 114.00 / MBF
White Oak	18.8 MBF	\$ 102.00 / MBF
Pulpwood		
Jack Pine	354 Cords	\$ 7.75 / Cord
Misc. Species 2	201 Cords	\$ 3.00 / Cord
Mixed Aspen	572 Cords	\$ 11.90 / Cord
Mixed Hardwood	229 Cords	\$ 12.55 / Cord
Mixed Oak	619 Cords	\$ 13.70 / Cord
Red Pine	888 Cords	\$ 34.25 / Cord
White Pine	128 Cords	\$ 9.80 / Cord

* The total volume is statistically estimated within plus (+) or minus (-) 9.56 percent. There are an estimated 3,369 cords on this timber sale, plus or minus 322 cords at the 95% confidence level. The estimated units are final and not subject to adjustment. Prospective bidders are urged to examine this timber and to make their own estimates of quantity and quality.

BOND AND PAYMENT SCHEDULE:

1. A bond in the amount of \$3,309.89 to insure faithful performance of the conditions of the contract will be deposited by the successful bidder within 21 days of the sale award.
2. Cutting in any sale or unit without the required advance payment would be considered a trespass.
3. Total payment must be paid in advance or according to the following schedule :
 - (a) Ten percent (10%) of the sale value must be paid within 21 days of the sale award.
 - (b) The 10% down payment will be credited towards the first unit cut.
 - (c) Payment for each of the following units must be made before cutting begins in that unit:

PAYMENT UNIT NUMBER	PERCENT OF TOTAL SALE VALUE
01	20.1%
02	19.7%
03	7.4%
04	11.2%
05	9.7%
06	12.9%
07	10.4%
08	8.6%

4. If no cutting takes place, the 10% down payment will not be refunded.
5. Operations on the contract issued will terminate on 09/30/2030.

SALE STATISTICS

Volumes were calculated in cubic feet using the Michigan taper model. Cubic foot volume includes all wood inside bark for the product indicated. For display purposes, cubic feet were converted to cords and MBF using a simple conversion factor, e.g. 79 cubic feet per cord and 185 cubic feet per MBF. The cubic foot volumes are precise; the cords and MBF volumes are not. Cubic foot volume cannot be directly converted to cords or boards with precision.

SALE VOLUMES

The total estimated sale volume may not equal the sum of the species/products due to the nature of statistical calculations associated with double sampling methodology.

VOLUME			STATISTICAL RANGE IN CORDS	
TOTAL CUBIC FEET	TOTAL CORDS	PERCENT ERROR	MINIMUM	MAXIMUM
266,128	3,369	9.56%	3,047	3,691

VDU VOLUMES

A VDU is a Volume Determination Unit. Volumes and their associated statistics are calculated at the VDU level and summarized to the sale level. There is often a one to one relationship between a VDU and a Payment Unit, but not always, depending on the cruise design. Refer to the VDU TO PAYMENT UNIT table.

	VOLUME			RANGE IN CORDS	
VDU	TOTAL CUBIC FEET	TOTAL CORDS	PERCENT ERROR	MINIMUM	MAXIMUM
33	42,560	539	21.71%	422	656
34	16,900	214	30.28%	149	279
35	57,804	732	28.71%	522	942
44	25,133	318	22.81%	246	391
50	32,126	407	21.99%	317	496
52	17,942	227	30.20%	159	296
64	34,313	434	28.83%	309	560
90	11,137	141	45.61%	77	205
92	13,238	168	35.98%	107	228
128	14,974	190	38.64%	116	263
TOTAL:	266,128	3,369		2,423	4,314

VDU TO PAYMENT UNIT

When a VDU is associated with more than one Payment Unit (PU), the VDU volumes are assigned to the PU based on acres of the VDU within the PU.

VDU	VDU ACRES	PU	PU ACRES
33	39.1	1	39.1
34	16.3	6	16.3
35	22.0	2	22.0
44	24.9	3	24.9
50	35.7	7	35.7
52	14.0	4	14.0
64	26.6	5	26.6
92	24.3	8	24.3
128	11.4	6	11.4
TOTAL:	214.3		214.3

DESCRIPTION OF TIMBER BY PU (PU)

PU	MARKET GROUP	PRODUCT	QUANTITY	UNIT	ACRES	ADVERTISE PRICE	
1	Misc. Species 2	Pulpwood	1	Cords	39.1	\$13,260.35	
	Mixed Aspen		52	Cords			
	<i>B. T. Aspen</i>		40	Cords			
	<i>Quaking Aspen</i>		12	Cords			
	Mixed Hardwood		26	Cords			
	<i>Black Cherry</i>		2	Cords			
	<i>Red Maple</i>		24	Cords			
	Mixed Oak		99	Cords			
	<i>Northern Pin Oak</i>		84	Cords			
	<i>White Oak</i>		15	Cords			
	Red Pine		303	Cords			
White Pine	59	Cords					
2	Northern Pin Oak	Sawtimber	20.2	MBF	22.0	\$13,015.55	
	Red Oak		4.8	MBF			
	White Oak		1.9	MBF			
	Misc. Species 2	Pulpwood	29	Cords			
	Mixed Aspen		291	Cords			
	<i>B. T. Aspen</i>		195	Cords			
	<i>Quaking Aspen</i>		96	Cords			
	Mixed Hardwood		94	Cords			
	<i>Red Maple</i>		Sawtimber	3.4			MBF
	<i>Black Cherry</i>			Pulpwood			2
	<i>Red Maple</i>		85				Cords
	Mixed Oak		52	Cords			
	<i>Northern Pin Oak</i>		45	Cords			
	<i>Red Oak</i>		2	Cords			
	<i>White Oak</i>		5	Cords			
	Red Pine		139	Cords			
White Pine	63	Cords					
3	Northern Pin Oak	Sawtimber	35.0	MBF	24.9	\$4,869.60	
	Jack Pine	Pulpwood	10	Cords			
	Misc. Species 2		66	Cords			
	Mixed Aspen		54	Cords			
	<i>B. T. Aspen</i>		51	Cords			
	<i>Quaking Aspen</i>		3	Cords			
	Mixed Hardwood		18	Cords			
	<i>Black Cherry</i>		3	Cords			
	<i>Red Maple</i>		15	Cords			
	Mixed Oak		88	Cords			
	<i>Northern Pin Oak</i>		88	Cords			
4	Northern Pin Oak		Sawtimber	1.4	MBF	14.0	\$7,429.60
	Mixed Aspen	Pulpwood	8	Cords			
	<i>B. T. Aspen</i>		8	Cords			
	Mixed Oak		8	Cords			
	<i>Northern Pin Oak</i>		8	Cords			
	Red Pine		208	Cords			
5	Northern Pin Oak		Sawtimber	14.8	MBF	26.6	\$6,446.85
	White Oak	Pulpwood	13.1	MBF			
	Jack Pine		87	Cords			
	Misc. Species 2		21	Cords			
	Mixed Aspen		122	Cords			
	<i>B. T. Aspen</i>		119	Cords			
	<i>Quaking Aspen</i>		3	Cords			
	Mixed Hardwood		42	Cords			
	<i>Red Maple</i>		Sawtimber	2.6	MBF		

DESCRIPTION OF TIMBER BY PU (PU), CON'T

PU	MARKET GROUP	PRODUCT	QUANTITY	UNIT	ACRES	ADVERTISE PRICE	
5 con't	<i>Black Cherry</i>	<i>Pulpwood</i>	1	<i>Cords</i>			
	<i>Red Maple</i>		36	<i>Cords</i>			
	Mixed Oak		97	<i>Cords</i>			
	<i>Northern Pin Oak</i>		56	<i>Cords</i>			
	<i>White Oak</i>		41	<i>Cords</i>			
6	Northern Pin Oak	Sawtimber	21.0	MBF	27.7	\$8,557.65	
	Red Oak		7.8	MBF			
	Jack Pine	Pulpwood	31	Cords			
	Misc. Species 2		46	Cords			
	Mixed Aspen		21	Cords			
	<i>B. T. Aspen</i>		21	<i>Cords</i>			
	Mixed Hardwood		27	Cords			
	<i>Red Maple</i>		27	<i>Cords</i>			
	Mixed Oak		92	Cords			
	<i>Northern Pin Oak</i>		80	<i>Cords</i>			
	<i>Red Oak</i>		12	<i>Cords</i>			
	Red Pine		113	Cords			
	White Pine		6	Cords			
	7		Northern Pin Oak	Sawtimber			28.1
Red Oak		8.7	MBF				
White Oak		Pulpwood	3.8	MBF			
Jack Pine			45	Cords			
Misc. Species 2			38	Cords			
Mixed Aspen			24	Cords			
<i>B. T. Aspen</i>			24	<i>Cords</i>			
Mixed Hardwood			20	Cords			
<i>Red Maple</i>			<i>Sawtimber</i>	1.4	<i>MBF</i>		
<i>Red Maple</i>				<i>Pulpwood</i>	17	<i>Cords</i>	
Mixed Oak			183		Cords		
<i>Northern Pin Oak</i>			142	<i>Cords</i>			
<i>Red Oak</i>			12	<i>Cords</i>			
<i>White Oak</i>			29	<i>Cords</i>			
8	Jack Pine	Pulpwood	181	Cords	24.3	\$5,709.10	
	Mixed Hardwood		2	Cords			
	<i>Black Cherry</i>		2	<i>Cords</i>			
	Red Pine		125	Cords			
TOTAL:			160.6	MBF			
TOTAL:			2,991	Cords			

Sale Specific Conditions & Requirements

Sale Name: Mason Tract RP

Sale Number: 72-023-24 Seq#: 2

1 - Sale Area

1.2 - Boundaries

1.2.1 - Painted Boundaries (9/19)

The sale boundary and Payment Unit boundaries are marked and identified by blue, red, and yellow paint, in addition to unpainted boundaries along roads and cover type lines. Exterior sale boundary lines against Forest Service property are marked with blue paint. Note that the Forest Service has painted red spots on trees along their property boundary. Exterior sale boundary lines against state are marked with red paint in addition to unpainted boundaries along cover type lines and roads (see Timber Sale Map). Interior retention patches are marked with red paint; no harvesting activities may occur within these areas. Interior Payment Unit boundary lines are marked with yellow paint. The blue painted boundary line trees are not Included Timber and are to be protected. Cut the merchantable red painted sale boundary trees. If the red painted tree is in a multiple-stem clump, cut all stems within that clump. Yellow painted boundary line trees are only to be cut when all surrounding Payment Units have been paid.

2 - Timber Specifications

2.1 - Included Timber

2.1.1 - Clearcut Unit(s) with Unmerchantable Trees (6/14)

Within Payment Unit(s) 2, cut all trees that are two (2) inches or more at DBH except trees marked with green paint. In addition, cut dead oak that the top has not broken out of.

Within Payment Unit 8, cut all trees that are two (2) inches or more at DBH except white pine, white oak, and trees marked with green paint.

2.1.3 - Cut Tree Marked Unit(s) (12/08)

Within Payment Unit(s) 1, 4, & 6, all red pine, white pine, and white oak are designated for cutting when marked with orange paint above and below stump height, regardless of merchantability. In addition, cut all other species that meet minimum piece specifications except trees marked with green paint. Dead oak that the top has not broken out of is designated for cutting.

2.1.4 - Designated Timber Unit(s) (6/17)

Within Payment Unit(s) 3, all trees except red pine, white pine, and white oak are designated for cutting which meet minimum piece specifications in 2.2 Utilization regardless of merchantability. Dead oak that the top has not broken out of is also designated for cutting. Sapling and pole red pine and white pine may be cut only where necessary for operable paths, targeting the smallest stems, to be scaled and invoiced.

Within Payment Units 5 and 7, all trees except red pine, white pine, and trees marked with green paint are designated for cutting which meet minimum piece specifications in 2.2 Utilization. Dead oak that the top has not broken out of is also designated for cutting. Sapling and pole red pine and white pine may be cut only where necessary for operable paths, targeting the smallest stems, to be scaled and invoiced.

2.1.11 - Description of Timber Note (2/04)

Note that all red pine, white pine, jack pine, and aspen were cruised as pulp. Note that Misc Species 2 is dead oak that the top has not broken out of. Note that the former landing within Payment Unit 4 was excluded from the cruise acres.

2.2 - Utilization

2.2.2 - Chipping Required (12/24)

Payment Unit 8 must be chip harvested to facilitate subsequent prescribed burning. The Purchaser has the option to produce sawlogs or pulpwood bolts, but the remaining portion of the trees must be chipped and hauled. A chipping exemption may be obtained if operations minimize slash through close utilization and spread out the residual for faster breakdown. This exemption must be granted in writing. The requirement to retain approximately 1/6 to 1/3 of tree tops and limbs less than four inches in diameter does not apply (G. C. & R. 2.2) because the site will be managed as a Pine Barrens.

2.2.3 - Stump Heights (12/24)

Stump heights within Payment Units 1-7 shall not exceed 12 inches for trees greater than 14 inches DBH and 6 inches for trees smaller than 14 inches DBH. Stumps may be left up to 24 inches tall for trees greater than 20 inches DBH or where steep slopes limit operations. Stump heights within Payment Unit 8 shall not exceed 6 inches for all trees in order to facilitate subsequent prescribed burning.

3 - Payments

3.2 - Scaled Sales

3.2.3 - Stumpage Withholding Agreement (12/24)

When there is a third party involved in the sale as a broker or consumer, a stumpage withholding agreement will be used. This allows the State to accept the scale of the consumer and saves time for the Purchaser and the State.

Whenever consumer's scale is to be accepted, a Stumpage Withholding Agreement (Agreement for Stumpage Payment PR-4049) must be in effect for each State Forest Timber Sale Contract. Arrangements shall be made between the Management Unit and Purchaser as to records and scale slips to accompany payments. Stumpage payments shall be made by the Purchaser as often as convenient, but in no case less than once per month.

Load tickets must be processed according with 3.2.4 - Load tickets. Failure of the permit holder to comply with these provisions may constitute trespass. Loads of timber not accountable by the load ticket system may be assessed as an average truck load against the permit.

The Purchaser is to withhold for all wood hauled during the period the stumpage Withholding Agreement is in effect.

3.2.4 - Load Tickets (9/15)

- 1) All lockbox stubs must be stamped with the contract number.
- 2) All destination stubs must be stamped with the contract number and the Management Unit name of where to return.
- 3) Every load of timber that leaves the contract area must place a ticket in the lock box. No exceptions.
- 4) The destination stub must be returned or reported electronically with the consumer scale for all loads hauled to a consumer with a Withholding Agreement.
- 5) All unused tickets and empty books must be returned to the Sale Administrator.
- 6) All tickets must be reconciled before the sale is considered complete.

3.3 - Pre-measured Sales

3.3.4 - Dividing Payment Units (7/14)

Payment Unit(s) 1 and 2 may be divided at the request of the Purchaser and upon approval of the Unit Manager. Dividing Payment Units is a contract modification which requires a Timber Sale Contract Amendment.

3.4 - Damaged Timber

3.4.1 - Damaged Timber (12/24)

General Condition and Requirement 3.4 Damaged Timber, defines liquidated damages for undesignated live merchantable trees which are cut or injured. No damage is acceptable to undesignated live merchantable trees. Within the sale area, if more than 10% of trees (> 4.5" DBH) within a specified area of the sale are damaged, liquidated damages will be assessed for all trees damaged. Rates will be in accordance with General Condition and Requirement 3.4 Damaged Timber, or at a rate of \$50 per sawtimber tree and \$20 per pole sized tree, whichever is greater.

4 - Transportation

4.1 - Construction

4.1.3 - Slash and Earthen Piles (8/04)

Piles or windrows of earth along roads and landings that have been widened or constructed shall be leveled. Slash from road maintenance or construction, including stumps, shall be utilized or dispersed into the sale.

4.1.6 - Road Construction (4/24)

Construction of new roads, landings, or improvements of existing roads shall be done in such a way as to minimize the environmental and visual impacts. Merchantable trees shall be cut and utilized unless otherwise directed. Non-merchantable trees shall be severed and laid flat on the ground. Slash shall be utilized or scattered, not left in piles or windrows, and be kept a minimum of 10 feet back from the road edge. Stumps shall be set upright, not left on edge, and be moved at least 10 feet away from the road edge. Disturbed soil shall be feathered into the woods and not left in berms or windrows.

4.1.7 - Road Closure (10/11)

All new roads built into the sale must be blocked to vehicle traffic upon completion of the sale. Overgrown roads that are reopened shall be considered new roads. In general, closure will require constructing a four (4') foot high berm of stumps and logs covered with earth. Stumps and brush may also need to be placed at intervals along the trail. Contact the sale administrator for specific details of design and placement.

4.1.11 - Permits (2/12)

The Purchaser will secure any necessary highway and county road permits that may be required.

5 - Operations

5.1 - Notification

5.1.1 - Pre-sale Conference (10/25)

A pre-sale conference on site between the Purchaser and Sale Administrator is required prior to beginning any operations to determine landing and road locations. The Unit Manager or his/her representative must be contacted at least 5 days in advance to schedule the conference.

5.1.4 - Post-Sale Conference (10/16)

A post-sale conference on site between the Purchaser and sale administrator is required prior to the completion of active logging operations to determine clean-up and repair of landings, road edges, and the fulfillment of other contract specifications.

5.2 - Conduct of Operations

5.2.1 - Slash

5.2.1.12 - Slash for Prescribed Burning (1/05)

To facilitate prescribed burning, slash shall be moved at least 50 feet from the sale boundary in Payment Unit 8. In addition, slash cannot be piled or placed near residual trees.

5.2.1.13 - Dispose of Slash as Directed (12/05)

Slash is to be disposed of as directed by the Sale Administrator, such as flattening taller slash piles within the visual depth zone of county roads and non-motorized trails.

5.2.2 - Hazard Trees/Snags

5.2.2.1 - Den Trees (10/16)

Obvious hollow and/or den trees shall be protected and left standing unless they are a safety hazard.

5.2.3 - Operating Restrictions

5.2.3.1 - Operating Restrictions (9/11)

Within Payment Unit(s) 5 & 7, unless changed by written agreement, cutting and skidding are limited to the period of November 1 to April 1. This restriction is because portions of these Payment Units are on Mason grant lands with associated management guidelines.

5.2.3.2 - Operating Restrictions (9/11)

Within Payment Unit(s) 8, unless changed by written agreement, cutting and skidding are limited to when the ground is snow-covered and frozen. This restriction is needed to minimize disturbance to the known rare plant populations within an Ecological Reference Area.

5.2.3.3 - Bark Slippage Restriction (3/09)

Within Payment Unit(s) 1, 3, 4, 5, 6, & 7, unless changed by written agreement, cutting and skidding are not permitted during the period of April 15 to July 15. This restriction is because of bark slippage.

5.2.3.5 - Oak Wilt Restriction (1/18)

Within Payment Unit(s) 1-7, unless changed by written agreement, cutting, skidding, hauling within the sale and brushing of access roads to the sale are not permitted during the period of April 15 to July 15. Operations may be allowed if specific steps are taken to prevent damaging uncut oak during the high-risk period. Those steps may include completing all road brushing before April 15 and clearing a tree-length buffer along uncut oak cover before April 15. This is necessary to reduce the spread of oak wilt. For more information, contact the Unit Manager or his/her representative.

5.2.3.6 - Bark Beetle Restriction (1/25)

In the event drought creates a high risk of pine bark beetle infestation, pine is not to be cut during the period March 1 through July 1, unless all portions of trees greater than two (2) inches in diameter are removed from the Sale Area, reduced to chips, or treated to the satisfaction of the Unit Manager or his/her representative, within 15 days of being severed from the stump. Pine log decks, pulpwood piles and treetops that are piled for chipping in the fall or winter within a 1/4 mile of susceptible sites must be removed before March 15. Residual slash must not be placed in piles or rows and must be spread over the site for quick drying. The Department of Natural Resources will exercise this specification if the risk of damage warrants.

5.2.4 - Dead and Down Creation

5.2.4.4 - Dead and Down Creation, Grouse (6/18)

To encourage grouse and other wildlife, in Payment Unit(s) 2, leave one 12" or larger diameter (or largest diameter trees within stand) whole tree on the ground for every two (2) acres, preferably a hardwood species such as oak or maple or if no hardwoods are present, a pine species (white or red). These trees will be evenly scattered throughout the Payment Unit, preferably at least two chains from any roads, two-tracks, or trails open to vehicles.

5.2.20 - Equipment Width (2/04)

It is recommended that equipment having a maximum width outside tires of 10 feet be used within Payment Units 1, 3, 4, 5, 6, & 7. This is because the row spacing is variable and narrow in places.

5.2.29 - Shrub Protection (1/20)

Reasonable care should be taken to avoid cutting or damaging hawthorn and juneberry. In addition, all of the identified rare plum occurrences must be protected. The plum locations will be flagged for visibility prior to harvest activity. These woody-shrub plants are highly beneficial to various wildlife species.

5.2.38 - No Decking Against Live Trees (2/04)

Cut products may not be decked against unmarked or designated leave trees.

5.2.40 - Pathway Protection (10/10)

The Mason Tract Pathway is a hiking and ski trail and is shown on the Timber Sale Map. The Shore-to-Shore Equestrian Trail is a horse and hiking trail and is shown on the Timber Sale Map. Do not cut trees or damage posts with blue pathway markers. Maintain a 20-foot wide slash, debris, and rut free zone daily, using the pathway as the centerline. Do not run equipment down the pathway.

5.4 - Soil Protection

5.4.2 - Skid Trails (2/04)

Skid trails up and down slopes should be avoided. If, however, this is unavoidable, these trails will be left in a non-erodible condition using water bars, logs, and slash. Placing of slash on these skid trails while logging is ongoing may alleviate need for any further action. At the direction of the Sale Administrator, seed, fertilizer, and mulch may also be required.

5.8 - Protection of Endangered Species

5.8.10 - Wood Turtle (12/24)

The sale area contains a known occurrence of wood turtles and/or areas of high-quality habitat.

-Within 100 foot buffer, operations are only allowed from October 1 to March 14.

-Within 660 foot buffer, operations are allowed from October 1 to March 14. Operations may be allowed from March 15 to

May 1, with an amendment. This restriction applies to Payment Unit 8 which also has a winter-only operating restriction (5.2.3.2).

6 - Safety and Fire Prevention

6.2 - Signing

6.2.1 - Road Posting (10/20)

The Purchaser is responsible for posting and maintaining caution signs on South Branch Road and Canoe Harbor Road prior to beginning operations. The road must be posted at appropriate distances from the sale area to warn of logging activity and truck traffic. Signs must be removed when harvest operations are suspended or completed. Signs only need to be posted on active Payment Units. The Purchaser will provide these signs.

6.2.3 - Recreational Trail Posting (10/20)

The Purchaser is responsible for posting and maintaining caution signs on The Mason Tract Pathway and Shore-to-Shore Equestrian Trail prior to beginning operations. The trail must be posted at appropriate distances from the sale area to warn of logging activity and truck traffic at both ends of the trail. Signs must be removed when harvest operations are suspended or completed. Signs only need to be posted on the Mason Tract Pathway when Payment Unit 8 is active. Signs only need to be posted on the Shore-to-Shore Equestrian Trail when Payment Unit 1 or the intersecting haul route are active. The Purchaser will provide these signs.

7 - Other Conditions

7.5 - Loss

7.5.1 - Deteriorating Timber (7/09)

The Sale Area has received damage from age-related decline, porcupine feeding, jack pine budworm, and windthrow. The Purchaser should harvest the wood as soon as possible. The Department of Natural Resources is held free of responsibility of any further damage or deterioration due to delay in harvesting.



TIMBER SALE MAP

This information provided by authority of Part 525, 1994 PA 451, as amended.

Sale Number
72-023-24

Date
04/04/2025

Forest Management Unit
Grayling Mgt Unit

County
Crawford

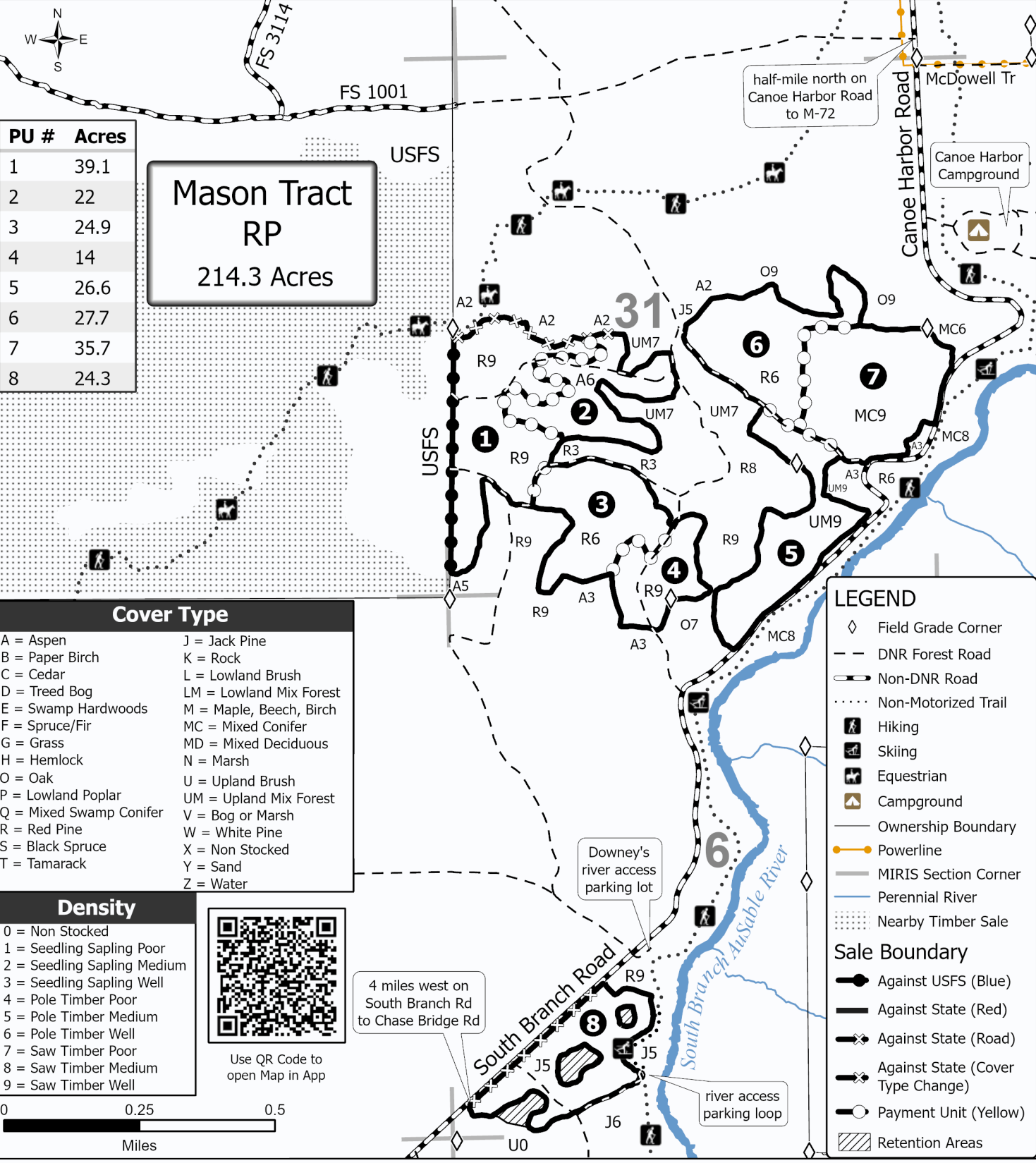
Boundary By: Charlebois, McClarren
Marked By: Charlebois, McClarren, Hoffman,
Mickveich
Cruised By: Charlebois

Scale
1:15,840

Page
1

Of
1

Township | Range | Section(s) and Subdivision(s)
25N / 26N | 01W | Sec. 31 S1/2NW,S1/2NE,SW,SE; Sec. 32 NWSW; Sec. 6 NENW,NWNE,NESW,S1/2SW;



PU #	Acres
1	39.1
2	22
3	24.9
4	14
5	26.6
6	27.7
7	35.7
8	24.3

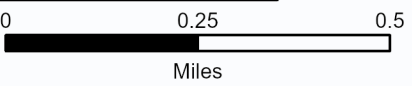
**Mason Tract
RP
214.3 Acres**

Cover Type	
A = Aspen	J = Jack Pine
B = Paper Birch	K = Rock
C = Cedar	L = Lowland Brush
D = Treed Bog	LM = Lowland Mix Forest
E = Swamp Hardwoods	M = Maple, Beech, Birch
F = Spruce/Fir	MC = Mixed Conifer
G = Grass	MD = Mixed Deciduous
H = Hemlock	N = Marsh
O = Oak	U = Upland Brush
P = Lowland Poplar	UM = Upland Mix Forest
Q = Mixed Swamp Conifer	V = Bog or Marsh
R = Red Pine	W = White Pine
S = Black Spruce	X = Non Stocked
T = Tamarack	Y = Sand
	Z = Water

Density
0 = Non Stocked
1 = Seedling Sapling Poor
2 = Seedling Sapling Medium
3 = Seedling Sapling Well
4 = Pole Timber Poor
5 = Pole Timber Medium
6 = Pole Timber Well
7 = Saw Timber Poor
8 = Saw Timber Medium
9 = Saw Timber Well



Use QR Code to open Map in App



LEGEND

- ◇ Field Grade Corner
- - - DNR Forest Road
- ▬ Non-DNR Road
- ⋯ Non-Motorized Trail
- 🚶 Hiking
- 🏂 Skiing
- 🐎 Equestrian
- 🏠 Campground
- Ownership Boundary
- ⚡ Powerline
- MIRIS Section Corner
- Perennial River
- ⋯ Nearby Timber Sale
- Sale Boundary**
- 👉 Against USFS (Blue)
- 👉 Against State (Red)
- 👉 Against State (Road)
- 👉 Against State (Cover Type Change)
- 👉 Payment Unit (Yellow)
- ▨ Retention Areas