



**DEPARTMENT OF NATURAL RESOURCES  
STATE OF MICHIGAN  
TIMBER SALE PROSPECTUS #7533**

SCHEDULED SALE DATE AND TIME: **3:00 p.m. (local time) on January 15, 2025.**

LOCATION: **BALDWIN OFFICE, 2468 W 24TH STREET, BALDWIN, MI 49304.**

CONTACT NAME: David Flsher

PHONE NUMBER: (231) 745-4651

PROSPECTUS NOTE: The bidder is advised to inspect the sale area and review the location, estimated volumes, operating costs and contract terms of proposed sales. Please be aware that some landowners may request 60 days or more notice for access across their land.

Notice is hereby given that bids will be received by the Unit Manager, CADILLAC MANAGEMENT UNIT, for certain timber on the following described lands:

Camp Aspen (63-007-24) / T24N, R11W, SEC. 19, NW,SWNE,NESW,NWSE.

Wexford County, Advertised Price \$136,587.40, 86.0 Acres, Aspen, Hardwood.

# TIMBER SALE INFORMATION

Camp Aspen (63-007-24)

T24N, R11W, SEC. 19.

Wexford County (Advertised Price \$136,587.40)

A timber sale contract for this lump sum, sealed bid timber sale will be awarded to the responsible bidder offering the highest sealed bid price. All units of volume listed below were estimated using the Inventory Manager computer program and the new Michigan taper model. Bids must be at or above the following advertised price for each product and species:

<u>PRODUCTS &amp; SPECIES</u>	<u>ESTIMATED UNITS*</u>	<u>ADVERTISED PRICE</u>
Sawtimber		
B. T. Aspen	199.0 MBF	\$ 85.00 / MBF
Basswood	71.6 MBF	\$ 118.00 / MBF
Beech	30.1 MBF	\$ 138.00 / MBF
Black Cherry	2.1 MBF	\$ 233.00 / MBF
Red Maple	125.8 MBF	\$ 76.00 / MBF
Sugar Maple	257.9 MBF	\$ 205.00 / MBF
Pulpwood		
B. T. Aspen	441 Cords	\$ 22.80 / Cord
Basswood	65 Cords	\$ 12.85 / Cord
Mixed Hardwood	1,793 Cords	\$ 18.55 / Cord

\* The total volume is statistically estimated within plus (+) or minus (-) 14.68 percent. There are an estimated 3,920 cords on this timber sale, plus or minus 576 cords at the 95% confidence level. The estimated units are final and not subject to adjustment. Prospective bidders are urged to examine this timber and to make their own estimates of quantity and quality.

### **BOND AND PAYMENT SCHEDULE:**

1. A bond in the amount of \$13,658.74 to insure faithful performance of the conditions of the contract will be deposited by the successful bidder within 21 days of the sale award.
2. Cutting in any sale or unit without the required advance payment would be considered a trespass.
3. Total payment must be paid in advance or according to the following schedule :
  - (a) Ten percent (10%) of the sale value must be paid within 21 days of the sale award.
  - (b) The remainder is due before cutting begins.
  - (c) Payment for each of the following units must be made before cutting begins in that unit:
 

PAYMENT UNIT NUMBER	PERCENT OF TOTAL SALE VALUE
01	100.0%
4. If no cutting takes place, the 10% down payment will not be refunded.
5. Operations on the contract issued will terminate on 03/31/2028.

### **SALE STATISTICS**

Volumes were calculated in cubic feet using the Michigan taper model. Cubic foot volume includes all wood inside bark for the product indicated. For display purposes, cubic feet were converted to cords and MBF using a simple conversion factor, e.g. 79 cubic feet per cord and 185 cubic feet per MBF. The cubic foot volumes are precise; the cords and MBF volumes are not. Cubic foot volume cannot be directly converted to cords or boards with precision.

### **SALE VOLUMES**

The total estimated sale volume may not equal the sum of the species/products due to the nature of statistical calculations associated with double sampling methodology.

VOLUME		STATISTICAL RANGE IN CORDS		
TOTAL CUBIC FEET	TOTAL CORDS	PERCENT ERROR	MINIMUM	MAXIMUM
309,666	3,920	14.68%	3,344	4,495

**VDU VOLUMES**

A VDU is a Volume Determination Unit. Volumes and their associated statistics are calculated at the VDU level and summarized to the sale level. There is often a one to one relationship between a VDU and a Payment Unit, but not always, depending on the cruise design. Refer to the VDU TO PAYMENT UNIT table.

VDU	VOLUME		PERCENT ERROR	RANGE IN CORDS	
	TOTAL CUBIC FEET	TOTAL CORDS		MINIMUM	MAXIMUM
1	309,666	3,920	14.68%	3,344	4,495
<b>TOTAL:</b>	<b>309,666</b>	<b>3,920</b>		<b>3,344</b>	<b>4,495</b>

**VDU TO PAYMENT UNIT**

When a VDU is associated with more than one Payment Unit (PU), the VDU volumes are assigned to the PU based on acres of the VDU within the PU.

VDU	VDU ACRES	PU	PU ACRES
1	86.0	1	86.0
<b>TOTAL:</b>	<b>86.0</b>		<b>86.0</b>

**DESCRIPTION OF TIMBER BY PU (PU)**

PU	MARKET GROUP	PRODUCT	QUANTITY	UNIT	ACRES	ADVERTISE PRICE
1	B. T. Aspen	Sawtimber	199.0	MBF	86.0	\$136,587.40
	Basswood		71.6	MBF		
	Beech		30.1	MBF		
	Black Cherry		2.1	MBF		
	Red Maple		125.8	MBF		
	Sugar Maple		257.9	MBF		
	B. T. Aspen		Pulpwood	441		
	Basswood	65		Cords		
	Mixed Hardwood	1,793		Cords		
	<i>Beech</i>	33		<i>Cords</i>		
	<i>Black Cherry</i>	31		<i>Cords</i>		
	<i>Ironwood</i>	8		<i>Cords</i>		
	<i>Red Maple</i>	272		<i>Cords</i>		
	<i>Sugar Maple</i>	1,449		<i>Cords</i>		
	TOTAL:			686.5		
TOTAL:			2,299	Cords		

## Sale Specific Conditions & Requirements

Sale Name: Camp Aspen

Sale Number: 63-007-24 Seq#: 2

### 1 - Sale Area

#### 1.2 - Boundaries

##### 1.2.1 - Painted Boundaries (9/19)

The sale boundary is marked and identified by red paint. Exterior sale boundary lines against state are marked with red paint. Retention patches are marked with red paint; no harvesting activities may occur within these areas. The painted boundary line trees are not Included Timber and are to be protected unless marked with orange paint.

### 2 - Timber Specifications

#### 2.1 - Included Timber

##### 2.1.1 - Clearcut Unit(s) with Unmerchantable Trees (6/14)

Within Payment Unit(s) 1, cut all trees that are two (2) inches or more at DBH, , except do not cut oak, elm, or ash.

#### 2.2 - Utilization

##### 2.2.3 - Stump heights (4/07)

Stump heights within the Sale Area shall not exceed 12 inches for trees greater than 10 inches DBH and 4 inches for trees smaller than 10 inches DBH.

### 4 - Transportation

#### 4.1 - Construction

##### 4.1.3 - Slash and earthen piles (8/04)

Piles or windrows of earth along roads and landings that have been widened or constructed shall be leveled. Slash from road maintenance or construction, including stumps, shall be dispersed throughout the sale.

##### 4.1.12 - No new roads (1/12)

No new roads will be permitted in any Payment Unit. All operations are limited to existing roads. Skid trails only will be allowed.

#### 4.2 - Maintenance

##### 4.2.3 - Road maintenance (8/13)

The following road maintenance is required: Within 60 days of completion of hauling, or if no hauling occurs for 60 days, the road must be maintained and graded. This includes cleaning of drainage areas, grading, crowning and filling with gravel, if necessary. Damages will be assessed if grading/repair does not occur.

##### 4.2.5 - Two wheel drive condition (2/04)

All existing trail roads on and adjacent to the sale area must be passable by two-wheel drive traffic for the duration of the sale.

### 5 - Operations

#### 5.1 - Notification

##### 5.1.1 - Pre-sale conference (10/16)

A pre-sale conference on site between the Purchaser and sale administrator is required prior to beginning any operations to determine landing locations.

#### 5.2 - Conduct of Operations

##### 5.2.1 - Slash

#### 5.2.1.8 - Slash height (12/08)

No slash or tree tops may exceed 24 inches in height.

#### 5.2.2 - Hazard Trees/Snags

##### 5.2.2.1 - Den trees (10/16)

Obvious hollow and/or den trees shall be protected and left standing unless they are a safety hazard.

#### 5.2.3 - Operating Restrictions

##### 5.2.3.5 - Oak wilt restriction (1/18)

Within Payment Unit 1, unless changed by written agreement, cutting, skidding, hauling within the sale and brushing of access roads to the sale are not permitted during the period of April 15 to July 15. Operations may be allowed if specific steps are taken to prevent damaging uncut oak during the high risk period. Those steps may include completing all road brushing before April 15th and clearing a tree-length buffer along uncut oak cover before April 15th. This is necessary to reduce the spread of oak wilt. For more information, contact the Unit Manager or his/her representative.

##### 5.2.32 - Decking/landing restoration (9/13)

All decking and landing areas must have the surface area restored to a condition equal to or better than before. This is to ensure the proper regeneration of the stand. Wood debris, chips and "cookies" from trimmings must be removed or scattered away from landing and loading areas and may not be windrowed on the edge.

##### 5.2.38 - No decking against live trees (2/04)

Cut products may not be decked against unmarked or designated leave trees.

#### 5.4 - Soil Protection

##### 5.4.1 - Rutting restriction, general (7/16)

Operations are to cease immediately if equipment and weather conditions result in rutting of roads and/or skid trails which is 12 inches or greater in depth and 50 feet in length. The Unit Manager or his/her representative may restrict hauling and/or skidding if ruts exceed the specified depth. With the Unit Manager or his/her representative's approval, the Purchaser may return to the area when the risk of rutting has decreased.

#### 5.8 - Protection of Endangered Species

##### 5.8.5 - Protection of raptor nests (3/13)

All trees with raptor nests will be protected if found during harvesting operations. Notification will be made to the Unit Manager or his/her representative who will notify the Wildlife Biologist so an on-site evaluation and recommendation can be made, if necessary.

### **6 - Safety and Fire Prevention**

#### 6.2 - Signing

##### 6.2.1 - Road posting (10/20)

The Purchaser is responsible for posting and maintaining caution signs on forest roads prior to beginning operations. The road must be posted at appropriate distances from the Sale Area to warn of logging activity and truck traffic. Signs must be removed when harvest operations are suspended or completed. The Purchaser will provide these signs.



### TIMBER SALE MAP

This information provided by authority of Part 525, 1994 PA 451, as amended.

Sale Number  
**63-007-24**

Date  
**05/24/2024**

Forest Management Unit	County	Mapped By: GraceAnna Cooper
Cadillac Mgt Unit	Wexford	Cruised By: GraceAnna Cooper

Scale	Page	Of
1:10,000	1	1

Township	Range	Section(s) and Subdivision(s)
24N	11W	Sec. 19 NW,SWNE,NESW,NWSE;

#### Cover Type

A = Aspen	J = Jack Pine	O = Oak	U = Upland Brush
B = Paper Birch	K = Rock	P = Lowland Poplar	UM = Upland Mix Forest
C = Cedar	L = Lowland Brush	Q = Mixed Swamp Conifer	V = Bog or Marsh
D = Treed Bog	LM = Lowland Mix Forest	R = Red Pine	W = White Pine
E = Swamp Hardwoods	M = Maple, Beech, Birch	S = Black Spruce	X = Non Stocked
F = Spruce/Fir	MC = Mixed Conifer	T = Tamarack	Y = Sand
G = Grass	MD = Mixed Deciduous	Z = Water	
H = Hemlock	N = Marsh		

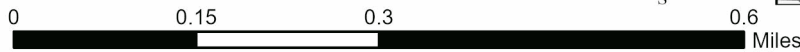
#### Density

0 = Non Stocked	5 = Pole Timber Medium
1 = Seedling Sapling Poor	6 = Pole Timber Well
2 = Seedling Sapling Medium	7 = Saw Timber Poor
3 = Seedling Sapling Well	8 = Saw Timber Medium
4 = Pole Timber Poor	9 = Saw Timber Well

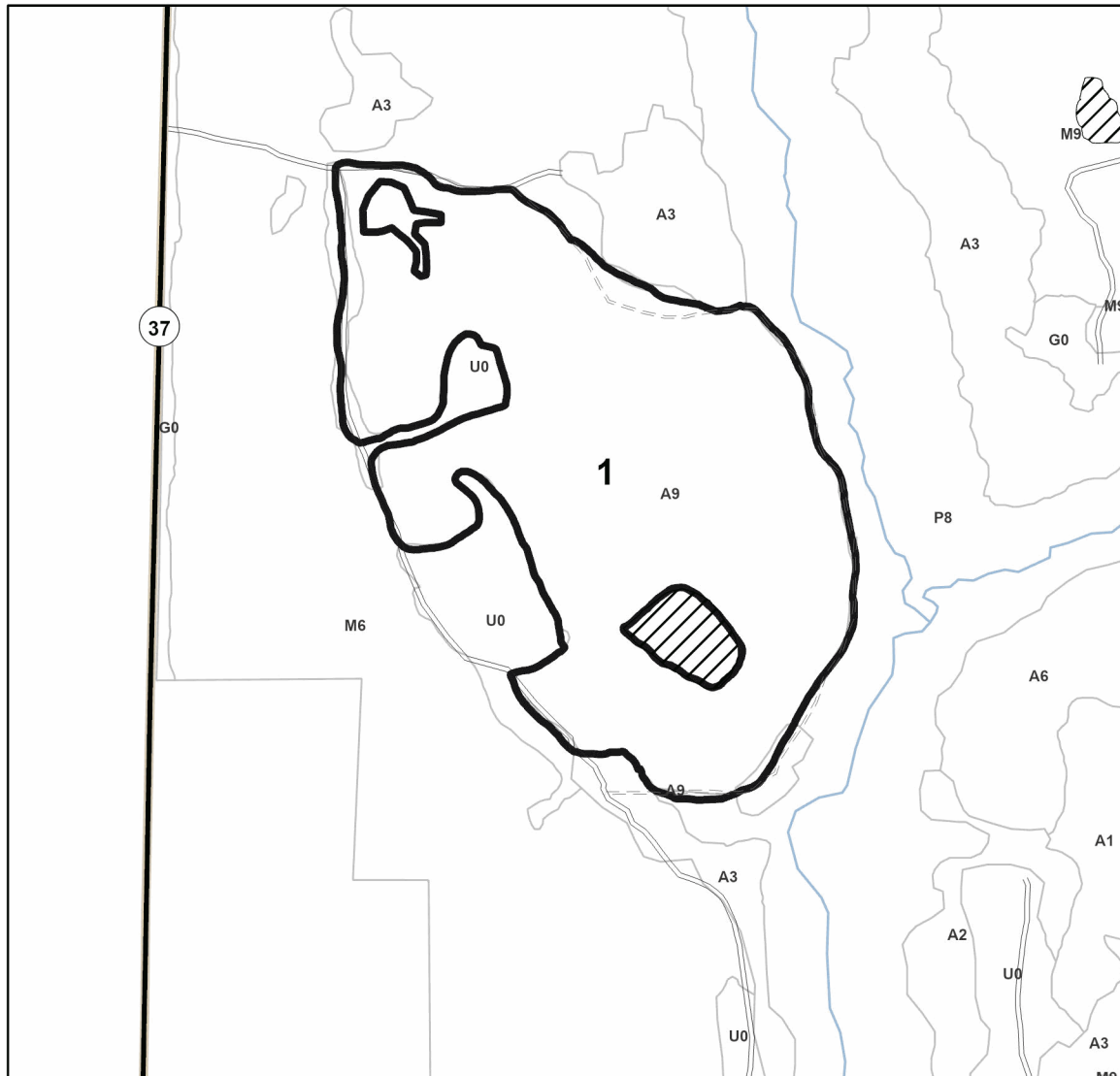
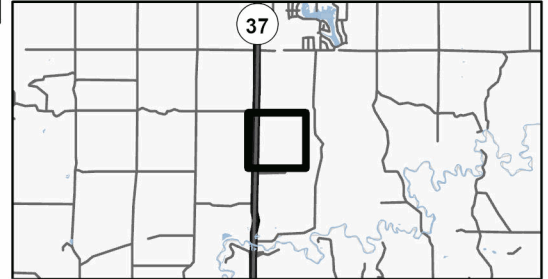
<b>PU # Acres</b>
1 86

### Camp Aspen

86.0 Acres



#### Locator Map (1:200,000)



#### Legend

- Against State (Red)
- Stand
- Retention Areas
- Highway
- Primary Forest Road
- Secondary Forest Road
- Forest Access Route
- Administrative Access Only
- Non-DNR Road

Use QR Code to open Map in App

