



**DEPARTMENT OF NATURAL RESOURCES  
STATE OF MICHIGAN  
TIMBER SALE PROSPECTUS #7533**

SCHEDULED SALE DATE AND TIME: **3:00 p.m. (local time) on January 15, 2025.**

LOCATION: **BALDWIN OFFICE, 2468 W 24TH STREET, BALDWIN, MI 49304.**

CONTACT NAME: David Flsher

PHONE NUMBER: (231) 745-4651

PROSPECTUS NOTE: The bidder is advised to inspect the sale area and review the location, estimated volumes, operating costs and contract terms of proposed sales. Please be aware that some landowners may request 60 days or more notice for access across their land.

Notice is hereby given that bids will be received by the Unit Manager, CADILLAC MANAGEMENT UNIT, for certain timber on the following described lands:

PorkyPine Mix (63-006-24) / T24N, R11W, SEC. 18, S1/2SE.

T24N, R11W, SEC. 19, N1/2NE, SENE, S1/2SE.

T24N, R11W, SEC. 30, N1/2NE, SENE, NESE.

Wexford County, Advertised Price \$92,201.10, 78.1 Acres, Hardwood, Red Pine.

SALE NOTE: Roundwood operation required for Payment Unit 4.

# TIMBER SALE INFORMATION

PorkyPine Mix (63-006-24)

T24N, R11W, SEC. 18; T24N, R11W, SEC. 19; T24N, R11W, SEC. 30.  
Wexford County (Advertised Price \$92,201.10)

SALE NOTE: Roundwood operation required for Payment Unit 4.

A timber sale contract for this lump sum, sealed bid timber sale will be awarded to the responsible bidder offering the highest sealed bid price. All units of volume listed below were estimated using the Inventory Manager computer program and the new Michigan taper model. Bids must be at or above the following advertised price for each product and species:

<u>PRODUCTS &amp; SPECIES</u>	<u>ESTIMATED UNITS*</u>	<u>ADVERTISED PRICE</u>
Sawtimber		
B. T. Aspen	50.7 MBF	\$ 85.00 / MBF
Basswood	7.2 MBF	\$ 118.00 / MBF
Black Cherry	28.1 MBF	\$ 233.00 / MBF
Red Maple	84.5 MBF	\$ 76.00 / MBF
Red Pine	162.4 MBF	\$ 104.00 / MBF
Sugar Maple	56.3 MBF	\$ 205.00 / MBF
White Pine	105.9 MBF	\$ 66.00 / MBF
Pulpwood		
B. T. Aspen	107 Cords	\$ 22.80 / Cord
Basswood	6 Cords	\$ 12.85 / Cord
Mixed Hardwood	560 Cords	\$ 18.55 / Cord
Red Pine	453 Cords	\$ 41.85 / Cord
Scotch Pine	10 Cords	\$ 15.05 / Cord
White Pine	251 Cords	\$ 26.45 / Cord

\* The total volume is statistically estimated within plus (+) or minus (-) 15.04 percent. There are an estimated 3,647 cords on this timber sale, plus or minus 549 cords at the 95% confidence level. The estimated units are final and not subject to adjustment. Prospective bidders are urged to examine this timber and to make their own estimates of quantity and quality.

**BOND AND PAYMENT SCHEDULE:**

1. A bond in the amount of \$9,220.11 to insure faithful performance of the conditions of the contract will be deposited by the successful bidder within 21 days of the sale award.
2. Cutting in any sale or unit without the required advance payment would be considered a trespass.
3. Total payment must be paid in advance or according to the following schedule :
  - (a) Ten percent (10%) of the sale value must be paid within 21 days of the sale award.
  - (b) The 10% down payment will be credited towards the first unit cut.
  - (c) Payment for each of the following units must be made before cutting begins in that unit:

PAYMENT UNIT NUMBER	PERCENT OF TOTAL SALE VALUE
01	39.8%
02	0.7%
03	13.6%
04	21.6%
05	24.3%

4. If no cutting takes place, the 10% down payment will not be refunded.
5. Operations on the contract issued will terminate on 03/31/2027.

**SALE STATISTICS**

Volumes were calculated in cubic feet using the Michigan taper model. Cubic foot volume includes all wood inside bark for the product indicated. For display purposes, cubic feet were converted to cords and MBF using a simple conversion factor, e.g. 79 cubic feet per cord and 185 cubic feet per MBF. The cubic foot volumes are precise; the cords and MBF volumes are not. Cubic foot volume cannot be directly converted to cords or boards with precision.

## SALE VOLUMES

The total estimated sale volume may not equal the sum of the species/products due to the nature of statistical calculations associated with double sampling methodology.

VOLUME			STATISTICAL RANGE IN CORDS	
TOTAL CUBIC FEET	TOTAL CORDS	PERCENT ERROR	MINIMUM	MAXIMUM
288,141	3,647	15.04%	3,099	4,196

## VDU VOLUMES

A VDU is a Volume Determination Unit. Volumes and their associated statistics are calculated at the VDU level and summarized to the sale level. There is often a one to one relationship between a VDU and a Payment Unit, but not always, depending on the cruise design. Refer to the VDU TO PAYMENT UNIT table.

	VOLUME			RANGE IN CORDS	
VDU	TOTAL CUBIC FEET	TOTAL CORDS	PERCENT ERROR	MINIMUM	MAXIMUM
1	82,769	1,048	25.31%	783	1,313
2	1,950	25	108.11%	0	51
3	34,526	437	36.73%	277	598
4	38,990	494	54.00%	227	760
5	129,905	1,644	23.28%	1,262	2,027
<b>TOTAL:</b>	<b>288,141</b>	<b>3,647</b>		<b>2,548</b>	<b>4,749</b>

## VDU TO PAYMENT UNIT

When a VDU is associated with more than one Payment Unit (PU), the VDU volumes are assigned to the PU based on acres of the VDU within the PU.

VDU	VDU ACRES	PU	PU ACRES
1	33.0	1	33.0
2	2.3	2	2.3
3	6.7	3	6.7
4	9.2	4	9.2
5	26.9	5	26.9
<b>TOTAL:</b>	<b>78.1</b>		<b>78.1</b>

**DESCRIPTION OF TIMBER BY PU (PU)**

PU	MARKET GROUP	PRODUCT	QUANTITY	UNIT	ACRES	ADVERTISE PRICE
1	B. T. Aspen	Sawtimber	37.1	MBF	33.0	\$36,683.20
	Basswood		7.2	MBF		
	Black Cherry		16.5	MBF		
	Red Maple		82.3	MBF		
	Sugar Maple		56.3	MBF		
	B. T. Aspen	Pulpwood	74	Cords		
	Basswood		6	Cords		
	Mixed Hardwood		500	Cords		
	<i>Black Cherry</i>		26	<i>Cords</i>		
	<i>Ironwood</i>		13	<i>Cords</i>		
	<i>Red Maple</i>		253	<i>Cords</i>		
	<i>Sugar Maple</i>		208	<i>Cords</i>		
2	B. T. Aspen	Sawtimber	4.3	MBF	2.3	\$690.50
	B. T. Aspen	Pulpwood	11	Cords		
	Mixed Hardwood		4	Cords		
	<i>Red Maple</i>		4	<i>Cords</i>		
3	B. T. Aspen	Sawtimber	9.3	MBF	6.7	\$12,518.60
	Red Pine		9.5	MBF		
	White Pine		61.8	MBF		
	B. T. Aspen	Pulpwood	22	Cords		
	Mixed Hardwood		14	Cords		
	<i>Black Cherry</i>		14	<i>Cords</i>		
	Red Pine		19	Cords		
	White Pine		193	Cords		
4	Black Cherry	Sawtimber	11.0	MBF	9.2	\$19,921.60
	Red Pine		83.7	MBF		
	White Pine		37.7	MBF		
	Mixed Hardwood	Pulpwood	20	Cords		
	<i>Black Cherry</i>		15	<i>Cords</i>		
	<i>Sugar Maple</i>		5	<i>Cords</i>		
	Red Pine		102	Cords		
	Scotch Pine		10	Cords		
	<i>Scotch Pine</i>	<i>Sawtimber</i>	1.9	<i>MBF</i>		
	<i>Scotch Pine</i>	<i>Pulpwood</i>	6	<i>Cords</i>		
White Pine		52	Cords			
5	Black Cherry	Sawtimber	0.6	MBF	26.9	\$22,387.20
	Red Maple		2.2	MBF		
	Red Pine		69.2	MBF		
	White Pine		6.4	MBF		
	Mixed Hardwood	Pulpwood	22	Cords		
	<i>Black Cherry</i>		7	<i>Cords</i>		
	<i>Red Maple</i>		15	<i>Cords</i>		
	Red Pine		332	Cords		
	White Pine		6	Cords		
	TOTAL:			495.1		
TOTAL:			1,387	Cords		

## Sale Specific Conditions & Requirements

Sale Name: PorkyPine Mix

Sale Number: 63-006-24 Seq#: 2

### 1 - Sale Area

#### 1.2 - Boundaries

##### 1.2.1 - Painted Boundaries (9/19)

The sale boundary and Payment Unit boundaries are marked and identified by red and yellow paint. Exterior sale boundary lines against state are marked with red paint. Interior Payment Unit boundaries are marked with yellow paint. Retention patches are marked with red paint within Payment Unit 1; no harvesting activities may occur within these areas. The painted boundary line trees are not Included Timber and are to be protected unless marked with orange paint. Yellow painted trees designating an interior Payment Unit boundary are only to be cut when all surrounding Payment Units have been paid.

### 2 - Timber Specifications

#### 2.1 - Included Timber

##### 2.1.1 - Clearcut Unit(s) with Unmerchantable Trees (6/14)

Within Payment Unit(s) 1, cut all trees that are two (2) inches or more at DBH, , regardless of merchantability, except do not cut any white pine.

Within Payment Unit 2, cut all trees that are two (2) inches or more at DBH, regardless of merchantability.

##### 2.1.2 - Clearcut Unit(s) w/o Unmerchantable Trees (8/11)

Within Payment Unit(s) 4, cut all trees which meet minimum piece specifications in 2.2 Utilization, except do not cut any sugar maple and protect saplings where possible.

##### 2.1.8 - Designated Plantation Row Unit(s) (12/08)

Within Payment Unit(s) 3 and 5, all trees which meet minimum piece specifications in 2.2 Utilization, within designated plantation rows are designated for cutting. Designated plantation rows are every third row for Payment Unit 5. Begin with the third row in from the outside of the plantation, then continue every third row. Because of the variability of row direction, it shall be the responsibility of the Producer to maintain the third-row sequence.

Designated plantation rows for Payment Unit 3 will follow a take two, leave two pattern. Begin with the third row in from the outside of the plantation. Because of the variability of row direction, it shall be the responsibility of the Producer to maintain the cut row sequence.

#### 2.2 - Utilization

##### 2.2.3 - Stump heights (4/07)

Stump heights within all Payment Units shall not exceed 12 inches for trees greater than 10 inches DBH and 4 inches for trees smaller than 10 inches DBH.

##### 2.2.6 - Roundwood Operation Required (3/21)

The skidding of whole trees or tree segments with limbs attached is prohibited within Payment Unit 4. All products must be produced as roundwood and forwarded to existing roads or landing areas in final product length. Trees must be harvested with in-woods processor (feller bunching harvester will not be allowed) in order to retain existing understory.

### 3 - Payments

#### 3.4 - Damaged Timber

##### 3.4.1 - Damaged timber (7/16)

General Condition and Requirement 3.4 Damaged Timber, defines liquidated damages for undesignated live merchantable trees which are cut or injured. In addition, extreme care should be taken to avoid damage to tree seedlings and saplings.

No damage is acceptable to undesignated live merchantable trees. Within the Sale Area, if more than 10 % of trees (> 4.5"

DBH) within a specified area of the sale are damaged, liquidated damages will be assessed for all trees damaged. Rates will be in accordance with General Condition and Requirement 3.4 Damaged Timber.

## **4 - Transportation**

### 4.1 - Construction

#### 4.1.3 - Slash and earthen piles (8/04)

Piles or windrows of earth along roads and landings that have been widened or constructed shall be leveled. Slash from road maintenance or construction, including stumps, shall be dispersed throughout the sale.

#### 4.1.12 - No new roads (1/12)

No new roads will be permitted in any Payment Unit. All operations are limited to existing roads. Skid trails only will be allowed.

### 4.2 - Maintenance

#### 4.2.1 - Hauling restriction (12/08)

Hauling may be restricted on forest roads by the Unit Manager or his/her representative. The restriction may occur during spring breakup or may occur during wet weather conditions.

#### 4.2.3 - Road maintenance (8/13)

The following road maintenance is required: Within 60 days of completion of hauling, or if no hauling occurs for 60 days, the road must be maintained and graded. This includes cleaning of drainage areas, grading, crowning and filling with gravel, if necessary. Damages will be assessed if grading/repair does not occur.

#### 4.2.5 - Two wheel drive condition (2/04)

All existing trail roads on and adjacent to the sale area must be passable by two-wheel drive traffic for the duration of the sale.

## **5 - Operations**

### 5.1 - Notification

#### 5.1.1 - Pre-sale conference (10/16)

A pre-sale conference on site between the Purchaser and sale administrator is required prior to beginning any operations to determine landing locations.

### 5.2 - Conduct of Operations

#### 5.2.1 - Slash

##### 5.2.1.8 - Slash height (12/08)

No slash or tree tops within any Payment Unit may exceed 24 inches in height.

#### 5.2.2 - Hazard Trees/Snags

##### 5.2.2.1 - Den trees (10/16)

Obvious hollow and/or den trees shall be protected and left standing unless they are a safety hazard.

#### 5.2.3 - Operating Restrictions

##### 5.2.3.3 - Bark slippage restriction (3/09)

Within Payment Unit(s) 3 and 5, unless changed by written agreement, cutting and skidding are not permitted during the period of April 15 to July 15. This restriction is because of bark slippage.

##### 5.2.3.4 - Oak wilt restriction, no exceptions (1/18)

Within Payment Units 2 and 3 cutting, skidding, hauling within the sale and brushing of access roads to the sale are not permitted during the period of April 15 to July 15. No exceptions will be granted. This is necessary to reduce the spread of oak wilt.

##### 5.2.3.15 - Oak wilt restriction, access roads (11/23)

Brushing of access roads to Payment Unit 1 must be completed prior to April 15 in order to use these roads for hauling

timber or moving machinery between April 15 and July 15. No exceptions will be granted. This is necessary to reduce the spread of oak wilt.

#### 5.2.20 - Equipment width (2/04)

Only equipment having a maximum width outside tires of 104 inches is to be used in Payment Unit 5. Equipment used to remove designated rows must be capable of moving through cut rows without damaging residual trees.

#### 5.2.32 - Decking/landing restoration (9/13)

All decking and landing areas must have the surface area restored to a condition equal to or better than before. This is to ensure the proper regeneration of the stand. Wood debris, chips and "cookies" from trimmings must be removed or scattered away from landing and loading areas and may not be windrowed on the edge.

#### 5.2.38 - No decking against live trees (2/04)

Cut products may not be decked against unmarked or designated leave trees.

### 5.4 - Soil Protection

#### 5.4.1 - Rutting restriction, general (7/16)

Operations are to cease immediately if equipment and weather conditions result in rutting of roads and/or skid trails which is 12 inches or greater in depth and 50 feet in length. The Unit Manager or his/her representative may restrict hauling and/or skidding if ruts exceed the specified depth. With the Unit Manager or his/her representative's approval, the Purchaser may return to the area when the risk of rutting has decreased.

### 5.6 - Debris and Waste Material

#### 5.6.3 - Equipment cleaning (9/24)

For purposes of this provision, "Off-Road Equipment" includes all logging and construction machinery, except for log trucks, chip vans, service vehicles, water trucks, pickup trucks, cars, and similar vehicles. Off-Road Equipment brought on site must be clean and free from plant material and soil prior to arrival on any Payment Unit. Off-Road Equipment shall be cleaned of plant material and dirt prior to being moved to a new stand within the sale. Plant material includes leaves, stems, roots and seeds. Equipment shall be considered clean when a visual inspection does not disclose seeds, soil, vegetative matter, and other debris that could contain or hold seeds. This is to prevent the spread of invasive plant species .

## 6 - Safety and Fire Prevention

### 6.2 - Signing

#### 6.2.1 - Road posting (10/20)

The Purchaser is responsible for posting and maintaining caution signs on County and forest roads prior to beginning operations. The road must be posted at appropriate distances from the Sale Area to warn of logging activity and truck traffic. Signs must be removed when harvest operations are suspended or completed. The Purchaser will provide these signs.



### TIMBER SALE MAP

This information provided by authority of Part 525, 1994 PA 451, as amended.

Sale Number  
**63-006-24**

Date  
**08/15/2024**

Forest Management Unit  
Cadillac Mgt Unit

County  
Wexford

Mapped By: Nate Koetje  
Cruised By: GraceAnna Cooper

Scale  
1:10,000

Page  
1

Of  
2

Township  
24N

Range  
11W

Section(s) and Subdivision(s)  
Sec. 18 S1/2SE; Sec. 19 N1/2NE,SENE,S1/2SE; Sec. 30 N1/2NE,SENE,NESE;

#### Cover Type

A = Aspen	J = Jack Pine	O = Oak	U = Upland Brush
B = Paper Birch	K = Rock	P = Lowland Poplar	UM = Upland Mix Forest
C = Cedar	L = Lowland Brush	Q = Mixed Swamp Conifer	V = Bog or Marsh
D = Treed Bog	LM = Lowland Mix Forest	R = Red Pine	W = White Pine
E = Swamp Hardwoods	M = Maple, Beech, Birch	S = Black Spruce	X = Non Stocked
F = Spruce/Fir	MC = Mixed Conifer	T = Tamarack	Y = Sand
G = Grass	MD = Mixed Deciduous	Z = Water	
H = Hemlock	N = Marsh		

#### Density

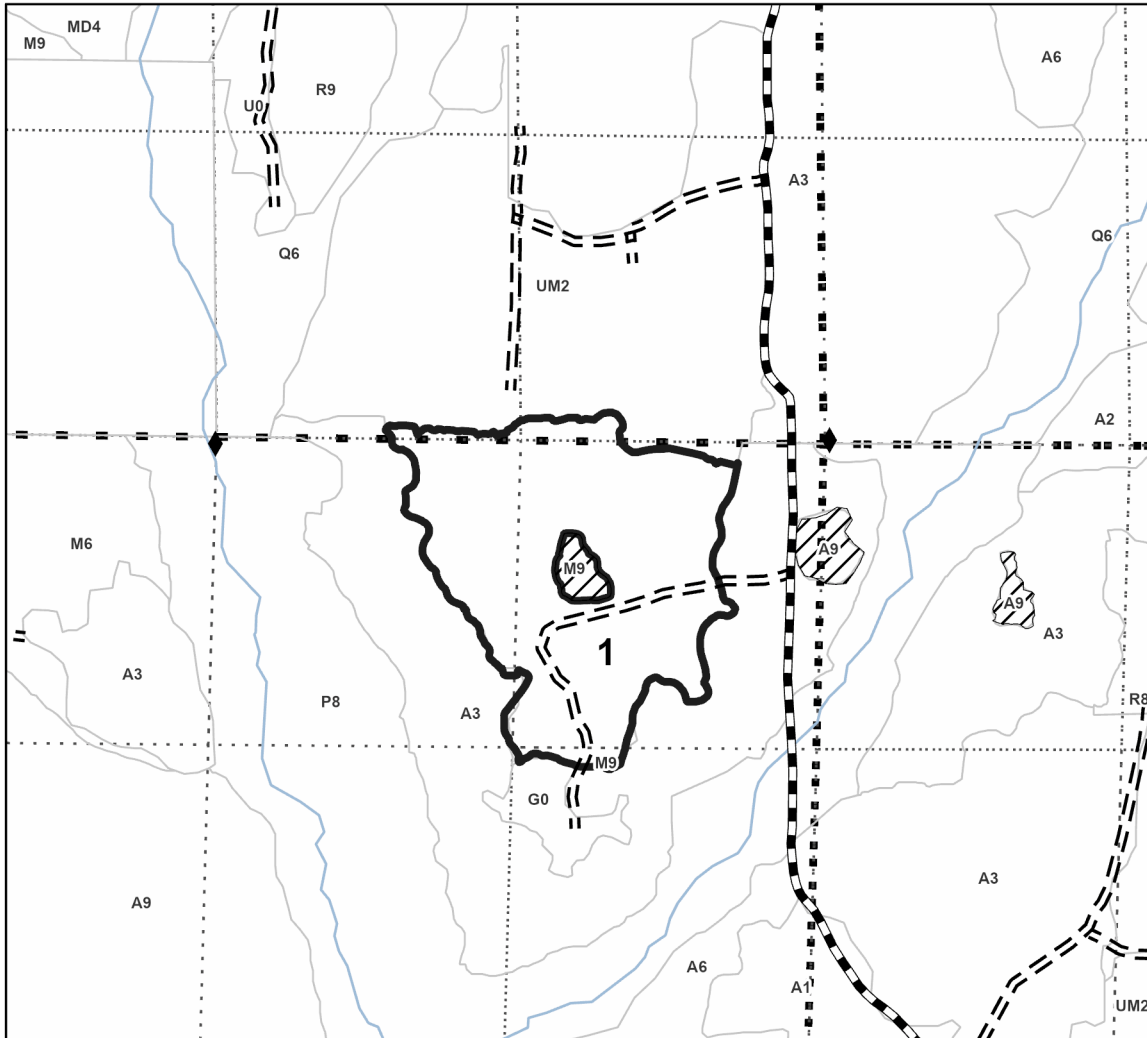
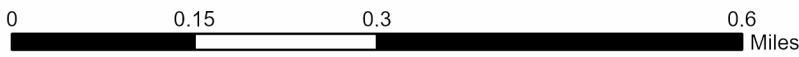
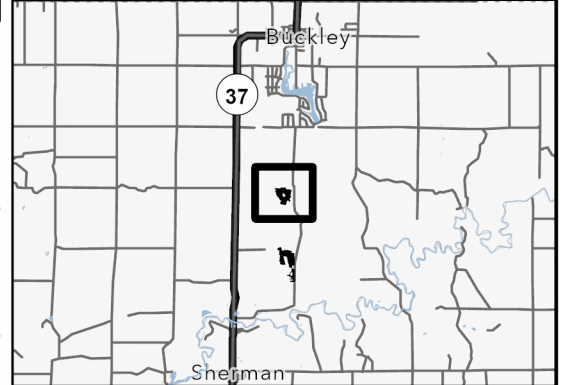
0 = Non Stocked	5 = Pole Timber Medium
1 = Seedling Sapling Poor	6 = Pole Timber Well
2 = Seedling Sapling Medium	7 = Saw Timber Poor
3 = Seedling Sapling Well	8 = Saw Timber Medium
4 = Pole Timber Poor	9 = Saw Timber Well

PU #	Acres
1	33
2	2.3
3	6.7
4	9.2
5	26.9

### PorkyPine Mix

78.1 Acres

#### Locator Map (1:200,000)



#### Legend

- Sale Boundary Against State (Red)
- Stand
- Retention Areas
- Primary Forest Road
- Forest Access Route
- Administrative Access Only
- Paved Road
- Government Gravel/Dirt
- Private Gravel/Dirt
- Field Grade Corner
- Survey Grade Corner

Use QR Code to open Map in App







### TIMBER SALE MAP

This information provided by authority of Part 525, 1994 PA 451, as amended.

Sale Number  
**63-006-24**

Date  
**08/15/2024**

Forest Management Unit  
Cadillac Mgt Unit

County  
Wexford

Mapped By: Nate Koetje  
Cruised By: GraceAnna Cooper

Scale  
1:10,000

Page  
2

Of  
2

Township 24N Range 11W Section(s) and Subdivision(s) Sec. 18 S1/2SE; Sec. 19 N1/2NE,SENE,S1/2SE; Sec. 30 N1/2NE,SENE,NESE;

#### Cover Type

A = Aspen	J = Jack Pine	O = Oak	U = Upland Brush
B = Paper Birch	K = Rock	P = Lowland Poplar	UM = Upland Mix Forest
C = Cedar	L = Lowland Brush	Q = Mixed Swamp Conifer	V = Bog or Marsh
D = Treed Bog	LM = Lowland Mix Forest	R = Red Pine	W = White Pine
E = Swamp Hardwoods	M = Maple, Beech, Birch	S = Black Spruce	X = Non Stocked
F = Spruce/Fir	MC = Mixed Conifer	T = Tamarack	Y = Sand
G = Grass	MD = Mixed Deciduous	Z = Water	
H = Hemlock	N = Marsh		

#### Density

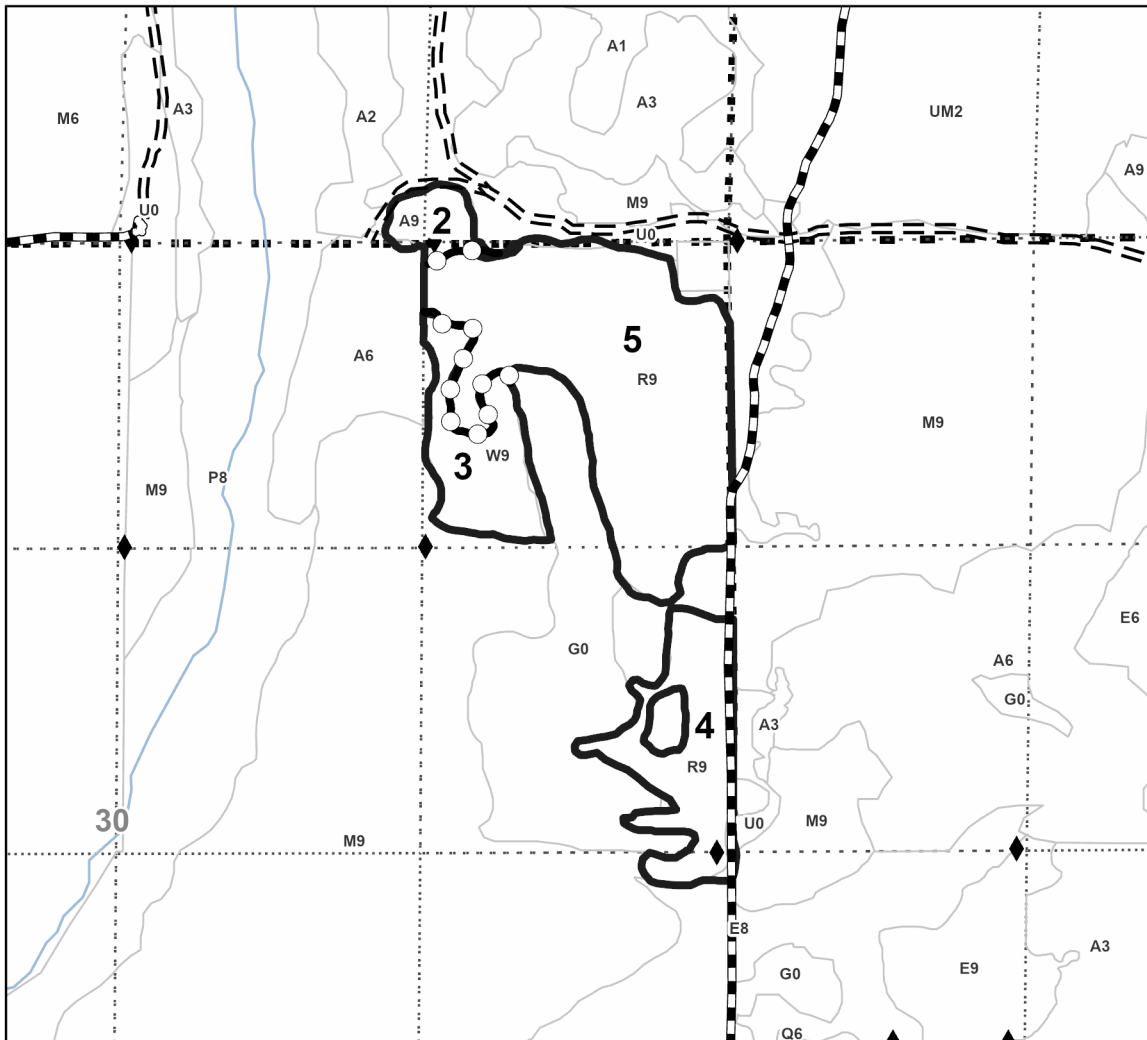
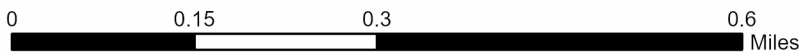
0 = Non Stocked	5 = Pole Timber Medium
1 = Seedling Sapling Poor	6 = Pole Timber Well
2 = Seedling Sapling Medium	7 = Saw Timber Poor
3 = Seedling Sapling Well	8 = Saw Timber Medium
4 = Pole Timber Poor	9 = Saw Timber Well

PU #	Acres
1	33
2	2.3
3	6.7
4	9.2
5	26.9

### PorkyPine Mix

### 78.1 Acres

#### Locator Map (1:200,000)



#### Legend

- Sale Boundary Against State (Red)
- Stand
- Against State (Red)
- Payment Unit (Yellow)
- Primary Forest Road
- Forest Access Route
- Administrative Access Only
- Paved Road
- Government Gravel/Dirt
- Private Gravel/Dirt
- Survey Grade Corner

Use QR Code to open Map in App

