



**DEPARTMENT OF NATURAL RESOURCES
STATE OF MICHIGAN
TIMBER SALE PROSPECTUS #7589**

SCHEDULED SALE DATE AND TIME: 3:00 p.m. (local time) on May 13, 2025.

LOCATION: NAUBINWAY DNR FIELD OFFICE, PO BOX 287, W11569 US2, NAUBINWAY, MI 49762.

CONTACT NAME: Josh Brinks

PHONE NUMBER: (906) 203-0210

PROSPECTUS NOTE: The bidder is advised to inspect the sale area and review the location, estimated volumes, operating costs and contract terms of proposed sales. Please be aware that some landowners may request 60 days or more notice for access across their land.

Notice is hereby given that bids will be received by the Unit Manager, SAULT STE MARIE MANAGEMENT UNIT, for certain timber on the following described lands:

Double Barrel Mix (45-114-23) / T43N, R08W, SEC. 23, E1/2NE.

T43N, R08W, SEC. 26, SWNW,NWSW.

T43N, R08W, SEC. 27, NWNW,S1/2NW,NWNE,SENE.

Mackinac County, Advertised Price \$12,511.15, 68.0 Acres, Paper Birch, Spruce/Fir/Tamarack.

SALE NOTE: Payment Unit 3 is optional to harvest due to potential access issues. Removing this Payment Unit is a contract modification which requires a Timber Sale Contract Amendment. This sale has been reduced due to "no bid" on previous advertisement

A recreation site such as a trail, pathway, or campground is within the sale area or the vicinity.
Certain restrictions/specifications may be applicable including time restrictions.

TIMBER SALE INFORMATION

Double Barrel Mix (45-114-23)

T43N, R08W, SEC. 23; T43N, R08W, SEC. 26; T43N, R08W, SEC. 27.

Mackinac County (Advertised Price \$12,511.15)

SALE NOTE: Payment Unit 3 is optional to harvest due to potential access issues. Removing this Payment Unit is a contract modification which requires a Timber Sale Contract Amendment. This sale has been reduced due to "no bid" on previous advertisement

A recreation site such as a trail, pathway, or campground is within the sale area or the vicinity. Certain restrictions/specifications may be applicable including time restrictions.

A timber sale contract for this lump sum, sealed bid timber sale will be awarded to the responsible bidder offering the highest sealed bid price. All units of volume listed below were estimated using the Inventory Manager computer program and the new Michigan taper model. Bids must be at or above the following advertised price for each product and species:

<u>PRODUCTS & SPECIES</u>	<u>ESTIMATED UNITS*</u>	<u>ADVERTISED PRICE</u>
Sawtimber		
Red Maple	3.8 MBF	\$ 84.00 / MBF
Pulpwood		
Balsam Fir	181 Cords	\$ 6.40 / Cord
Mixed Aspen	157 Cords	\$ 16.00 / Cord
Mixed Spruce	491 Cords	\$ 8.70 / Cord
N. White Cedar	150 Cords	\$ 2.20 / Cord
Paper Birch	252 Cords	\$ 3.45 / Cord
Red Maple	215 Cords	\$ 10.25 / Cord
Tamarack	20 Cords	\$ 1.45 / Cord
White Pine	74 Cords	\$ 11.05 / Cord

* The total volume is statistically estimated within plus (+) or minus (-) 28.12 percent. There are an estimated 1,548 cords on this timber sale, plus or minus 435 cords at the 95% confidence level. The estimated units are final and not subject to adjustment. Prospective bidders are urged to examine this timber and to make their own estimates of quantity and quality.

BOND AND PAYMENT SCHEDULE:

1. A bond in the amount of \$1,251.12 to insure faithful performance of the conditions of the contract will be deposited by the successful bidder within 21 days of the sale award.
2. Cutting in any sale or unit without the required advance payment would be considered a trespass.
3. Total payment must be paid in advance or according to the following schedule:
 - (a) Ten percent (10%) of the sale value must be paid within 21 days of the sale award.
 - (b) The 10% down payment will be credited towards the first unit cut.
 - (c) Payment for each of the following units must be made before cutting begins in that unit:

<u>PAYMENT UNIT NUMBER</u>	<u>PERCENT OF TOTAL SALE VALUE</u>
01	18.8%
02	7.1%
03	33.1%
04	41.0%

4. If no cutting takes place, the 10% down payment will not be refunded.
5. Operations on the contract issued will terminate on 06/30/2029.

SALE STATISTICS

Volumes were calculated in cubic feet using the Michigan taper model. Cubic foot volume includes all wood inside bark for the product indicated. For display purposes, cubic feet were converted to cords and MBF using a simple conversion factor, e.g. 79 cubic feet per cord and 185 cubic feet per MBF. The cubic foot volumes are precise; the cords and MBF volumes are not. Cubic foot volume cannot be directly converted to cords or boards with precision.

SALE VOLUMES

The total estimated sale volume may not equal the sum of the species/products due to the nature of statistical calculations associated with double sampling methodology.

<u>VOLUME</u>		<u>STATISTICAL RANGE IN CORDS</u>		
<u>TOTAL CUBIC FEET</u>	<u>TOTAL CORDS</u>	<u>PERCENT ERROR</u>	<u>MINIMUM</u>	<u>MAXIMUM</u>
122,271	1,548	28.12%	1,112	1,983

VDU VOLUMES

A VDU is a Volume Determination Unit. Volumes and their associated statistics are calculated at the VDU level and summarized to the sale level. There is often a one to one relationship between a VDU and a Payment Unit, but not always, depending on the cruise design. Refer to the VDU TO PAYMENT UNIT table.

	VOLUME			RANGE IN CORDS	
VDU	TOTAL CUBIC FEET	TOTAL CORDS	PERCENT ERROR	MINIMUM	MAXIMUM
6	48,561	615	23.41%	471	759
42	11,810	149	46.75%	80	219
58	41,786	529	26.51%	389	669
102	20,114	255	39.76%	153	356
TOTAL:	122,271	1,548		1,092	2,003

VDU TO PAYMENT UNIT

When a VDU is associated with more than one Payment Unit (PU), the VDU volumes are assigned to the PU based on acres of the VDU within the PU.

VDU	VDU ACRES	PU	PU ACRES
6	34.2	4	34.2
42	7.0	2	7.0
58	15.1	3	15.1
102	11.7	1	11.7
TOTAL:	68.0		68.0

DESCRIPTION OF TIMBER BY PU (PU)

PU	MARKET GROUP	PRODUCT	QUANTITY	UNIT	ACRES	ADVERTISE PRICE
1	Red Maple	Sawtimber	3.8	MBF	11.7	\$2,354.25
	Balsam Fir	Pulpwood	28	Cords		
	Mixed Aspen		25	Cords		
	<i>B. T. Aspen</i>		6	<i>Cords</i>		
	<i>Quaking Aspen</i>		19	<i>Cords</i>		
	Mixed Spruce		8	Cords		
	<i>Black Spruce</i>		5	<i>Cords</i>		
	<i>White Spruce</i>		3	<i>Cords</i>		
	Paper Birch		75	Cords		
	Red Maple		110	Cords		
2	Balsam Fir	Pulpwood	5	Cords	7.0	\$884.05
	Mixed Aspen		11	Cords		
	<i>Quaking Aspen</i>		11	<i>Cords</i>		
	Mixed Spruce		21	Cords		
	<i>Black Spruce</i>		18	<i>Cords</i>		
	<i>White Spruce</i>		3	<i>Cords</i>		
	N. White Cedar		64	Cords		
	Paper Birch		19	Cords		
	Red Maple		28	Cords		
	3	Balsam Fir	Pulpwood	136		
Mixed Aspen			105	Cords		
<i>Quaking Aspen</i>			105	<i>Cords</i>		
Mixed Spruce			50	Cords		
<i>White Spruce</i>			50	<i>Cords</i>		
N. White Cedar			86	Cords		
Paper Birch			89	Cords		
Red Maple			64	Cords		
4	Balsam Fir	Pulpwood	12	Cords	34.2	\$5,135.20
	Mixed Aspen		16	Cords		
	<i>B. T. Aspen</i>		11	<i>Cords</i>		
	<i>Quaking Aspen</i>		5	<i>Cords</i>		
	Mixed Spruce		412	Cords		
	<i>Black Spruce</i>		412	<i>Cords</i>		
	Paper Birch		69	Cords		
	Red Maple		13	Cords		
	Tamarack		20	Cords		
	White Pine		74	Cords		
TOTAL:			3.8	MBF		
TOTAL:			1,540	Cords		

Sale Specific Conditions & Requirements

Sale Name: Double Barrel Mix

Sale Number: 45-114-23 Seq#: 3

1 - Sale Area

1.2 - Boundaries

1.2.1 - Painted Boundaries (9/19)

The sale boundary and Payment Unit boundaries are marked and identified by red paint. Exterior sale boundary lines against state are marked with red paint. The painted boundary line trees are not Included Timber and are to be protected.

2 - Timber Specifications

2.1 - Included Timber

2.1.1 - Clearcut Unit(s) with Unmerchantable Trees (6/14)

Within Payment Unit(s) 1-4, cut all deciduous trees that are two (2) inches or more at DBH and all coniferous trees that are four (4) inches or more at DBH. In addition, the following exceptions apply:

- Within Payment Unit 1, do not cut any cedar, hemlock, yellow birch, or white pine.
- Within Payment Unit 4, do not cut any cedar and do not cut any white pine over 14 inches at DBH.

2.1.11 - Description of Timber Note (2/04)

Note that Payment Unit 3 is optional to harvest due to potential access issues. Removing this Payment Unit is a contract modification which requires a Timber Sale Contract Amendment.

2.2 - Utilization

2.2.9 - No Chipping Permitted (12/08)

Within Payment Unit(s) 1-4, all wood must be removed by whole tree, tree segment, or roundwood. No chipping is permitted.

4 - Transportation

4.1 - Construction

4.1.3 - Slash and Earthen Piles (8/04)

Piles or windrows of earth along roads and landings that have been widened or constructed shall be leveled. Slash from road maintenance or construction, including stumps, shall be dispersed throughout the sale.

4.1.6 - Road construction (1/09)

Construction of new roads or improvements of existing roads shall be done in such a way as to minimize the environmental and visual impacts. Merchantable trees shall be cut and utilized unless otherwise directed. Non-merchantable trees shall be severed and laid flat on the ground. Slash shall be scattered, and not left in windrows and kept a minimum of 10 feet back from the road edge. Stumps shall be set upright, not left on edge, and be moved at least 10 feet away from the road edge. Disturbed soil shall be feathered into the woods and not left in berms or windrows.

4.1.7 - Road Closure (10/11)

All new roads built into the sale must be blocked to vehicle traffic upon completion of the sale. In general, this will require constructing a four (4') foot high berm of stumps and logs covered with earth. These roads must be rendered impassable to cars and trucks. Contact the Sale Administrator for specific details of design and placement.

4.2 - Maintenance

4.2.1 - Hauling Restriction (12/08)

Hauling is restricted on Hog Island Road. The restriction is a permanent weight restriction. Hauling will be restricted unless permission is granted from Mackinac County Road Commission.

4.2.3 - Road maintenance (8/13)

The following road maintenance may be needed: Within 60 days of completion of hauling, or if no hauling occurs for 60 days, the road must be maintained and graded. This includes cleaning of drainage areas, grading, crowning and filling with gravel, if

necessary. Damages will be assessed if grading/repair does not occur.

4.2.5 - Two Wheel Drive Condition (2/04)

All existing trail roads on and adjacent to the Sale Area must be passable by two-wheel drive traffic for the duration of the sale.

5 - Operations

5.2 - Conduct of Operations

5.2.2 - Hazard Trees/Snags

5.2.2.1 - Den Trees (10/16)

Obvious hollow and/or den trees shall be protected and left standing unless they are a safety hazard.

5.2.3 - Operating Restrictions

5.2.3.1 - Operating Restrictions (9/11)

Within Payment Unit(s) 1-4, unless changed by written agreement, cutting and skidding are limited to the period of December 1 to April 15. This restriction is because of deer yard.

5.2.4 - Dead and Down Creation

5.2.4.6 - Dead and Down Creation, Other (9/09)

To improve habitat for wildlife, the Purchaser is to leave one brush pile on the ground for every two acres within Payment Unit 4. Piles must be at least 4 feet tall and scattered throughout the Sale Area. These piles can be created during normal harvesting procedures.

5.2.32 - Decking/Landing Restoration (9/13)

All decking and landing areas must have the surface area restored to a condition equal to or better than before. This is to ensure the proper regeneration of the stand. Wood debris, chips and "cookies" from trimmings must be removed or scattered away from landing and loading areas and may not be windrowed on the edge.

5.2.38 - No Decking Against Live Trees (2/04)

Cut products may not be decked against unmarked or designated leave trees.

5.2.41 - Snowmobile Trail Protection (9/11)

Sand Lake Road (Trail #473) is shown on the Timber Sale Map. Do not cut or damage posts with orange trail markers or traffic control signs. If the trail is used, it must be maintained and restored to a condition equal to or better than before the sale. The road maintenance/restoration must be done prior to December 1. If the trail is used for hauling, it must be graded to the satisfaction of the Unit Manager or his/her representative prior to December 1st. If the trail road is to be used for hauling during the snowmobile season, then a snow-covered base must be left on the trail. Maintain a 20-foot-wide slash, debris, and rut free zone daily using the snowmobile trail as the centerline. No decking of forest products will be permitted along the snowmobile trail.

5.8 - Protection of Endangered Species

5.8.5 - Protection of Raptor Nests (3/13)

All trees with raptor nests will be protected if found during harvesting operations. Notification will be made to the Unit Manager or his/her representative who will notify the Wildlife Biologist so an onsite evaluation and recommendation can be made, if necessary.

6 - Safety and Fire Prevention

6.2 - Signing

6.2.1 - Road Posting (10/20)

The Purchaser is responsible for posting and maintaining caution signs on roads used for harvesting operations and hauling prior to beginning operations. The road must be posted at appropriate distances from the Sale Area to warn of logging activity and truck traffic. Signs must be removed when harvest operations are suspended or completed. The Purchaser will provide these signs.

6.2.2 - Snowmobile Trail Posting (10/20)

The Purchaser is responsible for posting and maintaining caution signs on Sand Lake Road (Trail #473) prior to beginning operations during the snowmobile season (approximately December 1 to March 31). The trail must be posted at appropriate distances from the Sale Area to warn of logging activity and truck traffic. Signs must be removed when harvest operations are suspended or completed. The Purchaser will provide these signs.



TIMBER SALE MAP

This information provided by authority of Part 525, 1994 PA 451, as amended.

Sale Number

45-114-23

Date

11/20/2023

Forest Management Unit

Sault Ste Marie Mgt Unit

County

Mackinac

Mapped By: C. Flatt

Cruised By: DNR Staff

Scale

1:24,000

Page

1

Of

1

Township

43N

Range

08W

Section(s) and

Subdivision(s) **Sec. 23 E1/2NE; Sec. 26 SWNW,NWSW; Sec. 27 NWNW,S1/2NW,NWNE,SENE;**

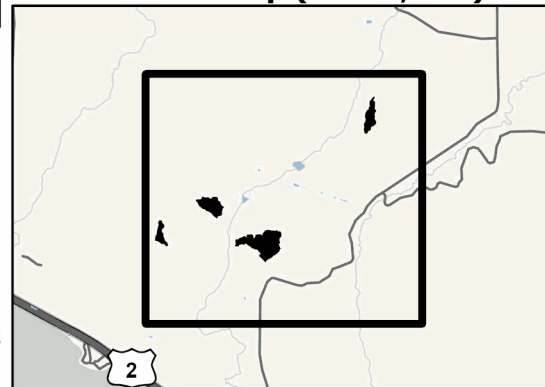
Cover Type

A = Aspen	J = Jack Pine	O = Oak	U = Upland Brush
B = Paper Birch	K = Rock	P = Lowland Poplar	UM = Upland Mix Forest
C = Cedar	L = Lowland Brush	Q = Mixed Swamp Conifer	V = Bog or Marsh
D = Treed Bog	LM = Lowland Mix Forest	R = Red Pine	W = White Pine
E = Swamp Hardwoods	M = Maple, Beech, Birch	S = Black Spruce	X = Non Stocked
F = Spruce/Fir	MC = Mixed Conifer	T = Tamarack	Y = Sand
G = Grass	MD = Mixed Deciduous		Z = Water
H = Hemlock	N = Marsh		

Density

0 = Non Stocked	5 = Pole Timber Medium
1 = Seedling Sapling Poor	6 = Pole Timber Well
2 = Seedling Sapling Medium	7 = Saw Timber Poor
3 = Seedling Sapling Well	8 = Saw Timber Medium
4 = Pole Timber Poor	9 = Saw Timber Well

Locator Map (1:100,000)



PU # Acres

1	11.7
2	7
3	15.1
4	34.2

Double Barrel Mix

Compartment(s) 144, 145, 161

68.0 Acres

