



**DEPARTMENT OF NATURAL RESOURCES
STATE OF MICHIGAN
TIMBER SALE PROSPECTUS #7817**

SCHEDULED SALE DATE AND TIME: **3:00 p.m. (local time) on May 27, 2026.**

LOCATION: **BALDWIN OFFICE, 2468 W 24TH STREET, BALDWIN, MI 49304.**

CONTACT NAME: David Fisher

PHONE NUMBER: (231) 878-0494

PROSPECTUS NOTE: The bidder is advised to inspect the sale area and review the location, estimated volumes, operating costs and contract terms of proposed sales. Please be aware that some landowners may request 60 days or more notice for access across their land.

Notice is hereby given that bids will be received by the Unit Manager, CADILLAC MANAGEMENT UNIT, for certain timber on the following described lands:

Bowl Choker Mix (63-053-25) / T21N, R05W, SEC. 26, NW, N1/2SW.

T21N, R05W, SEC. 27, NE, S1/2SW, NESE, S1/2SE.

T21N, R05W, SEC. 28, SE.

Missaukee County, Advertised Price \$309,132.90, 242.6 Acres, Hardwood, Red Oak.

SALE NOTE: The Sale Area has received damage from windthrow in Payment Unit 7 and oak decline and/or oak wilt in all Payment Units.

A recreation site such as a trail, pathway, or campground is within the sale area or the vicinity.
Certain restrictions/specifications may be applicable including time restrictions.

TIMBER SALE INFORMATION

Bowl Choker Mix (63-053-25)

T21N, R05W, SEC. 26; T21N, R05W, SEC. 27; T21N, R05W, SEC. 28.

Missaukee County (Advertised Price \$309,132.90)

SALE NOTE: The Sale Area has received damage from windthrow in Payment Unit 7 and oak decline and/or oak wilt in all Payment Units.

A recreation site such as a trail, pathway, or campground is within the sale area or the vicinity. Certain restrictions/specifications may be applicable including time restrictions.

A timber sale contract for this lump sum, sealed bid timber sale will be awarded to the responsible bidder offering the highest sealed bid price. All units of volume listed below were estimated using the Inventory Manager computer program and the new Michigan taper model. Bids must be at or above the following advertised price for each product and species:

<u>PRODUCTS & SPECIES</u>	<u>ESTIMATED UNITS*</u>	<u>ADVERTISED PRICE</u>
Sawtimber		
Black Cherry	10.8 MBF	\$ 128.00 / MBF
Mixed Aspen	286.7 MBF	\$ 119.00 / MBF
Red Maple	224.3 MBF	\$ 140.00 / MBF
Red Oak	921.7 MBF	\$ 174.00 / MBF
Red Pine	50.1 MBF	\$ 117.00 / MBF
White Oak	63.9 MBF	\$ 110.00 / MBF
White Pine	134.4 MBF	\$ 47.00 / MBF
Pulpwood		
Balsam Fir	16 Cords	\$ 33.80 / Cord
Black Cherry	47 Cords	\$ 14.40 / Cord
Jack Pine	80 Cords	\$ 12.80 / Cord
Mixed Aspen	648 Cords	\$ 18.60 / Cord
Mixed Oak	1,075 Cords	\$ 27.70 / Cord
Red Maple	1,023 Cords	\$ 14.40 / Cord
Red Pine	52 Cords	\$ 46.40 / Cord
White Pine	80 Cords	\$ 17.90 / Cord

* The total volume is statistically estimated within plus (+) or minus (-) 9.50 percent. There are an estimated 6,984 cords on this timber sale, plus or minus 664 cords at the 95% confidence level. The estimated units are final and not subject to adjustment. Prospective bidders are urged to examine this timber and to make their own estimates of quantity and quality.

BOND AND PAYMENT SCHEDULE:

1. A bond in the amount of \$15,456.65 to insure faithful performance of the conditions of the contract will be deposited by the successful bidder within 21 days of the sale award.
2. Cutting in any sale or unit without the required advance payment would be considered a trespass.
3. Total payment must be paid in advance or according to the following schedule :
 - (a) Ten percent (10%) of the sale value must be paid within 21 days of the sale award.
 - (b) The 10% down payment will be credited towards the first unit cut.
 - (c) Payment for each of the following units must be made before cutting begins in that unit:

PAYMENT UNIT NUMBER	PERCENT OF TOTAL SALE VALUE
01	4.3%
02	5.6%
03	1.5%
04	18.4%
05	22.4%
06	13.7%
07	2.0%
08	11.3%
09	5.4%
10	15.4%
4. If no cutting takes place, the 10% down payment will not be refunded.
5. Operations on the contract issued will terminate on 12/31/2029.

SALE STATISTICS

Volumes were calculated in cubic feet using the Michigan taper model. Cubic foot volume includes all wood inside bark for the product indicated. For display purposes, cubic feet were converted to cords and MBF using a simple conversion factor, e.g. 79 cubic feet per cord and 185 cubic feet per MBF. The cubic foot volumes are precise; the cords and MBF volumes are not. Cubic foot volume cannot be directly converted to cords or boards with precision.

SALE VOLUMES

The total estimated sale volume may not equal the sum of the species/products due to the nature of statistical calculations associated with double sampling methodology.

VOLUME			STATISTICAL RANGE IN CORDS	
TOTAL CUBIC FEET	TOTAL CORDS	PERCENT ERROR	MINIMUM	MAXIMUM
551,737	6,984	9.50%	6,320	7,648

VDU VOLUMES

A VDU is a Volume Determination Unit. Volumes and their associated statistics are calculated at the VDU level and summarized to the sale level. There is often a one to one relationship between a VDU and a Payment Unit, but not always, depending on the cruise design. Refer to the VDU TO PAYMENT UNIT table.

VDU	VOLUME		PERCENT ERROR	RANGE IN CORDS	
	TOTAL CUBIC FEET	TOTAL CORDS		MINIMUM	MAXIMUM
35	30,550	387	42.59%	222	551
39	47,956	607	39.59%	367	847
42	9,580	121	71.58%	34	208
44	172,209	2,180	15.15%	1,850	2,510
45	130,742	1,655	24.46%	1,250	2,060
53	19,409	246	55.37%	110	382
55	59,328	751	24.11%	570	932
58	32,063	406	27.64%	294	518
60	49,899	632	27.29%	459	804
TOTAL:	551,737	6,984		5,155	8,813

VDU TO PAYMENT UNIT

When a VDU is associated with more than one Payment Unit (PU), the VDU volumes are assigned to the PU based on acres of the VDU within the PU.

VDU	VDU ACRES	PU	PU ACRES
TOTAL:			

DESCRIPTION OF TIMBER BY PU (PU)

PU	MARKET GROUP	PRODUCT	QUANTITY	UNIT	ACRES	ADVERTISE PRICE	
1	Mixed Aspen	Sawtimber	2.9	MBF	7.2	\$13,324.50	
	<i>Quaking Aspen</i>		2.9	<i>MBF</i>			
	Red Maple		1.6	MBF			
	Red Oak		33.6	MBF			
	Red Pine		9.2	MBF			
	White Pine		91.2	MBF			
	Black Cherry		Pulpwood	3			Cords
	Mixed Aspen			3			Cords
	<i>Quaking Aspen</i>			3			<i>Cords</i>
	Mixed Oak			21			Cords
	<i>Red Oak</i>			21			<i>Cords</i>
	Red Maple			5			Cords
	Red Pine			9			Cords
	White Pine			21			Cords
2	Black Cherry	Sawtimber	2.8	MBF	15.6	\$17,378.90	
	Mixed Aspen		68.7	MBF			
	<i>Quaking Aspen</i>		68.7	<i>MBF</i>			
	Red Maple		2.8	MBF			
	White Oak		2.7	MBF			
	White Pine		21.4	MBF			
	Balsam Fir		Pulpwood	16			Cords
	Black Cherry			16			Cords
	Mixed Aspen			295			Cords
	<i>Quaking Aspen</i>			295			<i>Cords</i>
	Mixed Oak			9			Cords
	<i>Red Oak</i>			6			<i>Cords</i>
	<i>White Oak</i>			3			<i>Cords</i>
	Red Maple			26			Cords
White Pine	15	Cords					
3	Black Cherry	Sawtimber	2.8	MBF	6.3	\$4,561.90	
	Red Maple		6.5	MBF			
	Red Oak		12.6	MBF			
	Black Cherry		Pulpwood	4			Cords
	Mixed Oak			7			Cords
	<i>Red Oak</i>			7			<i>Cords</i>
	Red Maple			59			Cords
4	Black Cherry	Sawtimber	2.8	MBF	28.6	\$56,844.40	
	Mixed Aspen		17.5	MBF			
	<i>B. T. Aspen</i>		17.5	<i>MBF</i>			
	Red Maple		92.1	MBF			
	Red Oak		168.9	MBF			
	White Oak		29.4	MBF			
	White Pine		2.4	MBF			
	Black Cherry		Pulpwood	5			Cords
	Mixed Aspen			32			Cords
	<i>B. T. Aspen</i>			32			<i>Cords</i>
	Mixed Oak			157			Cords
	<i>Red Oak</i>			118			<i>Cords</i>
	<i>White Oak</i>			39			<i>Cords</i>
	Red Maple			256			Cords
White Pine	4	Cords					
5	Mixed Aspen	Sawtimber	160.7	MBF	26.8	\$69,398.40	
	<i>B. T. Aspen</i>		160.7	<i>MBF</i>			
	Red Maple		33.7	MBF			
	Red Oak		137.8	MBF			

DESCRIPTION OF TIMBER BY PU (PU), CON'T

PU	MARKET GROUP	PRODUCT	QUANTITY	UNIT	ACRES	ADVERTISE PRICE
5 con't	Red Pine	Sawtimber	40.9	MBF		
	White Oak		2.0	MBF		
	Mixed Aspen	Pulpwood	269	Cords		
	<i>B. T. Aspen</i>		269	<i>Cords</i>		
	Mixed Oak		223	Cords		
	<i>Red Oak</i>		215	<i>Cords</i>		
	<i>White Oak</i>		8	<i>Cords</i>		
	Red Maple		237	Cords		
	Red Pine		40	Cords		
	White Pine		7	Cords		
6	Red Oak	Sawtimber	201.2	MBF	29.6	\$42,367.10
	White Oak		5.2	MBF		
	Mixed Aspen	Pulpwood	3	Cords		
	<i>B. T. Aspen</i>		3	<i>Cords</i>		
	Mixed Oak		213	Cords		
	<i>Red Oak</i>		210	<i>Cords</i>		
	<i>White Oak</i>		3	<i>Cords</i>		
	Red Maple		48	Cords		
	Red Pine		3	Cords		
	7	Mixed Aspen	Sawtimber	20.4		
<i>B. T. Aspen</i>			20.4	<i>MBF</i>		
Red Maple			4.6	MBF		
Red Oak			1.3	MBF		
Jack Pine		Pulpwood	80	Cords		
Mixed Aspen			15	Cords		
<i>B. T. Aspen</i>			15	<i>Cords</i>		
Mixed Oak			15	Cords		
<i>Red Oak</i>			8	<i>Cords</i>		
<i>White Oak</i>			7	<i>Cords</i>		
Red Maple			73	Cords		
White Pine			2	Cords		
8		Mixed Aspen	Sawtimber	1.9	MBF	25.7
	<i>B. T. Aspen</i>		1.9	<i>MBF</i>		
	Red Maple		2.9	MBF		
	Red Oak		165.0	MBF		
	Mixed Aspen	Pulpwood	3	Cords		
	<i>B. T. Aspen</i>		3	<i>Cords</i>		
	Mixed Oak		168	Cords		
	<i>Red Oak</i>		168	<i>Cords</i>		
	Red Maple		63	Cords		
	9	Red Maple	Sawtimber	3.1	MBF	
Red Oak			60.1	MBF		
White Pine			17.4	MBF		
Black Cherry		Pulpwood	15	Cords		
Mixed Aspen			2	Cords		
<i>B. T. Aspen</i>			2	<i>Cords</i>		
Mixed Oak			131	Cords		
<i>Red Oak</i>			131	<i>Cords</i>		
Red Maple			42	Cords		
White Pine			27	Cords		
10	Black Cherry	Sawtimber	2.4	MBF	23.9	\$47,516.50
	Mixed Aspen		14.6	MBF		
	<i>B. T. Aspen</i>		14.6	<i>MBF</i>		
	Red Maple		77.0	MBF		
	Red Oak		141.2	MBF		

DESCRIPTION OF TIMBER BY PU (PU), CON'T

PU	MARKET GROUP	PRODUCT	QUANTITY	UNIT	ACRES	ADVERTISE PRICE
10 con't	White Oak	Sawtimber	24.6	MBF		
	White Pine		2.0	MBF		
	Black Cherry	Pulpwood	4	Cords		
	Mixed Aspen		26	Cords		
	<i>B. T. Aspen</i>		26	<i>Cords</i>		
	Mixed Oak		131	Cords		
	<i>Red Oak</i>		99	<i>Cords</i>		
	<i>White Oak</i>		32	<i>Cords</i>		
	Red Maple		214	Cords		
	White Pine		4	Cords		
TOTAL:			1,691.9	MBF		
TOTAL:			3,021	Cords		

Sale Specific Conditions & Requirements

Sale Name: Bowl Choker Mix

Sale Number: 63-053-25 Seq#: 1

1 - Sale Area

1.2 - Boundaries

1.2.1 - Painted Boundaries (9/19)

The sale boundary and Payment Unit boundaries are marked and identified by blue, red and yellow paint. Exterior sale boundary lines against private property are marked with blue paint. Exterior sale boundary lines against state are marked with red paint. Interior Payment Unit boundaries are marked with yellow paint. Retention patches are marked with red paint; no harvesting activities may occur within these areas. The painted boundary line trees are not Included Timber and are to be protected. Yellow painted trees designating an interior Payment Unit boundary are only to be cut when all surrounding Payment Units have been paid.

2 - Timber Specifications

2.1 - Included Timber

2.1.1 - Clearcut Unit(s) with Unmerchantable Trees (6/14)

Within Payment Unit(s) 7 and 8, cut all trees that are two (2) inches or more at DBH.

Within payment unit 8, do not cut white oak, white pine and trees with green paint.

2.1.2 - Clearcut Unit(s) w/o Unmerchantable Trees (8/11)

Within Payment Unit(s) 2, 5, and 6, cut all trees which meet minimum piece specifications in 2.2 Utilization except, do not cut trees marked with green paint.

Within Payment Unit 2 do not cut white pine 18 inches or greater at DBH.

Within Payment Unit 5, do not cut red pine 10 inches or less at DBH.

2.1.4 - Designated Timber Unit(s) (6/17)

Within Payment Unit(s) 3, white pine and red oak 12 inches or greater at DBH and all other species 2 inches and greater at DBH are designated for cutting except white oak and trees marked with green paint.

2.1.5 - Overstory Removal Unit(s) (8/11)

Within Payment Unit(s) 1, 4, 9, and 10, all trees which meet minimum piece specifications in 2.2 Utilization, are designated for cutting except trees marked with green paint.

Within Payment Units 1 and 9, do not cut white oak.

4 - Transportation

4.1 - Construction

4.1.3 - Slash and Earthen Piles (8/04)

Piles or windrows of earth along roads and landings that have been widened or constructed shall be leveled. Slash from road maintenance or construction, including stumps, shall be dispersed throughout the sale.

4.1.12 - No New Roads (1/12)

No new roads will be permitted in any Payment Unit. All operations are limited to existing roads. Only Skid trails will be allowed.

4.2 - Maintenance

4.2.1 - Hauling Restriction (12/08)

Hauling may be restricted on forest roads by the Unit Manager or his/her representative. The restriction may occur during

spring breakup or may occur during wet weather conditions.

4.2.4 - Grading (10/16)

For completion of the sale, state forest roads must be graded. In general, this will require a road grader or bulldozer to shape up the roads after forest products have been hauled off site. This includes cleaning of drainage areas, grading, crowning and filling with gravel, if necessary. The grading equipment to be used must be approved by the Unit Manager or his/her representative.

4.2.5 - Two Wheel Drive Condition (2/04)

All existing trail roads on and adjacent to the Sale Area must be passable by two-wheel drive traffic for the duration of the sale.

4.3 - Public Right-of-Way

4.3.2 - County R-O-W (12/06)

The County must be contacted prior to crossing or harvesting in the County Road R-O-W.

5 - Operations

5.1 - Notification

5.1.1 - Pre-sale Conference (10/25)

A pre-sale conference on site between the Purchaser and Sale Administrator is required prior to beginning any operations a Payment Unit to determine landing and road locations. The Unit Manager or his/her representative must be contacted at least 10 days in advance to schedule the conference.

5.1.4 - Post-Sale Conference (10/16)

A post-sale conference on site between the Purchaser and sale administrator is required 5 days prior to the completion of active logging operations to determine clean-up and repair of landings, road edges, and the fulfillment of other contract specifications.

5.2 - Conduct of Operations

5.2.1 - Slash

5.2.1.2 - Slash Removal

5.2.1.2.1 - Slash Removal, Right-of-Way (9/16)

All slash must be removed at least 10 feet from the cleared right-of-way of forest roads.

5.2.1.8 - Slash Height (12/08)

No slash or tree tops may exceed 24 inches in height.

5.2.1.11 - Slash for Reforestation (3/21)

To facilitate reforestation, the Sale Area shall be left with slash evenly distributed. Bunched tops within the cutting area shall be broken up and scattered. Stumps shall be cut low to the ground. Processing sites shall not be left with windrows or compacted layer of slash; tops and slash from these sites shall be hauled back into the cut area and scattered to the point that the ground surface is easily visible.

5.2.2 - Hazard Trees/Snags

5.2.2.1 - Den Trees (10/16)

Obvious hollow and/or den trees shall be protected and left standing unless they are a safety hazard. All standing dead trees must be protected and left standing unless they are a safety hazard.

5.2.3 - Operating Restrictions

5.2.3.5 - Oak Wilt Restriction (1/18)

Within all Payment Units unless changed by written agreement, cutting, skidding, hauling within the sale and brushing of access roads to the sale are not permitted during the period of April 15 to July 15. Operations may be allowed if specific steps are taken to prevent damaging uncut oak during the high-risk period. Those steps may include completing all road brushing before April 15 and clearing a tree-length buffer along uncut oak cover before April 15. This is necessary to

reduce the spread of oak wilt. For more information, contact the Unit Manager or his/her representative.

5.2.32 - Decking/Landing Restoration (9/13)

All decking and landing areas must have the surface area restored to a condition equal to or better than before. This is to ensure the proper regeneration of the stand. Wood debris, chips and "cookies" from trimmings must be removed or scattered away from landing and loading areas and may not be windrowed on the edge.

5.2.38 - No Decking Against Live Trees (2/04)

Cut products may not be decked against unmarked or designated leave trees.

5.2.39 - ORV Trail/Route Protection (4/18)

The Leota Trail is an ORV trail or route and is shown on the Timber Sale Map. Do not cut trees or damage posts with yellow ORV markers. All stumps within five (5) feet of the trail must be cut flush with the ground. Maintain a 20-foot-wide slash, debris, and rut free zone daily using the ORV trail or route as the centerline. Do not run equipment down the ORV trail or route. Skidding across the trail or route may only occur in locations approved by the Sale Administrator.

5.4 - Soil Protection

5.4.1 - Rutting Restriction, General (7/16)

Operations are to cease immediately if equipment and weather conditions result in rutting of roads and/or skid trails which are 12 inches or greater in depth and 50 feet in length. The Unit Manager or his/her representative may restrict hauling and/or skidding if ruts exceed the specified depth. With the Unit Manager or his/her representative's approval, the Purchaser may return to the area when the risk of rutting has decreased.

5.4.4 - Slope Protection (9/19)

Skid trails and roads on slopes shall be water barred with slash, stumps, and/or clean straw bales native to the area as soon as use is complete to prevent erosion.

5.6 - Debris and Waste Material

5.6.4 - Equipment Cleaning (2) (11/24)

For purposes of this provision, "Off-Road Equipment" includes all logging and construction machinery, except for log trucks, chip vans, service vehicles, water trucks, pickup trucks, cars, and similar vehicles. Off-Road Equipment shall be cleaned of plant material and dirt prior to entering the sale area. Plant material includes leaves, stems, roots and seeds. Equipment shall be considered clean when a visual inspection does not disclose seeds, soil, vegetative matter, and other debris that could contain or hold seeds. This is to prevent the spread of invasive plant species.

5.8 - Protection of Endangered Species

5.8.5 - Protection of Raptor Nests (3/13)

All trees with raptor nests will be protected if found during harvesting operations. Notification will be made to the Unit Manager or his/her representative who will notify the Wildlife Biologist so an onsite evaluation and recommendation can be made, if necessary.

6 - Safety and Fire Prevention

6.2 - Signing

6.2.1 - Road Posting (10/20)

The Purchaser is responsible for posting and maintaining caution signs on county and/or forest roads prior to beginning operations. The road must be posted at appropriate distances from the Sale Area to warn of logging activity and truck traffic. Signs must be removed when harvest operations are suspended or completed. The Purchaser will provide these signs.

6.2.3 - Recreational Trail Posting (10/20)

The Purchaser is responsible for posting and maintaining caution signs on the Leota Trail prior to beginning operations. The trail must be posted at appropriate distances from the Sale Area to warn of logging activity and truck traffic at both ends of the trail. Signs must be removed when harvest operations are suspended or completed. The Purchaser will provide these signs.

7 - Other Conditions

7.5 - Loss

7.5.1 - Deteriorating Timber (7/09)

The Sale Area has received damage from windthrow in Payment Unit 7 and oak decline and/or oak wilt in all Payment Units. The Purchaser should harvest the wood as soon as possible. The Department of Natural Resources is held free of responsibility of any further damage or deterioration due to delay in harvesting.



TIMBER SALE MAP

This information provided by authority of Part 525, 1994 PA 451, as amended.

Sale Number	Date	
63-053-25	08/13/2025	
Scale	Page	Of
1:10,000	1	2

Forest Management Unit	County	Mapped By:	Bonnette
Cadillac Mgt Unit	Missaukee	Cruised By:	Bonnette

Township	Range	Section(s) and Subdivision(s)
21N	05W	Sec. 26 NW,N1/2SW; Sec. 27 NE,S1/2SW,NESE,S1/2SE; Sec. 28 SE;

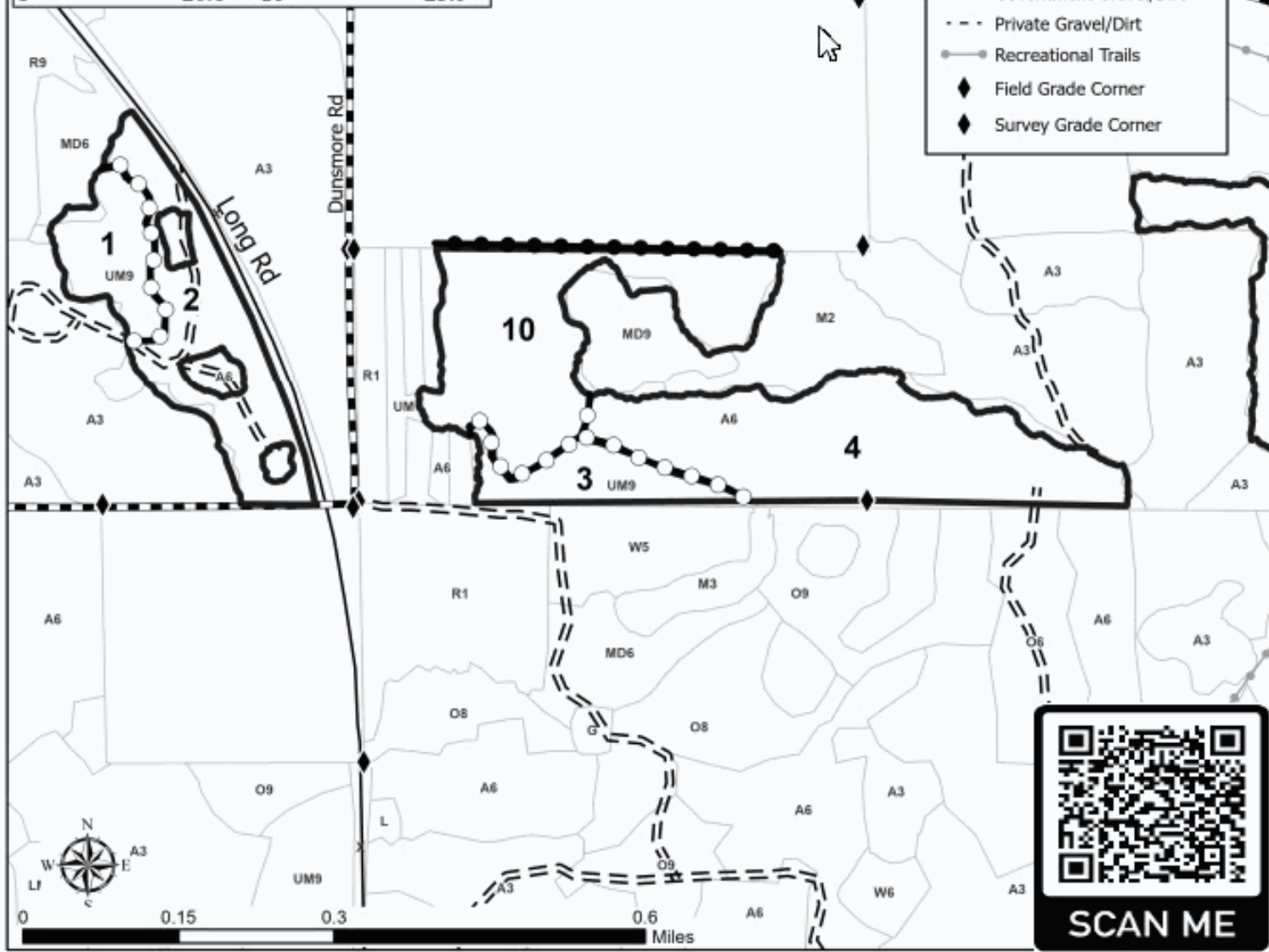
Cover Type			
A = Aspen	J = Jack Pine	O = Oak	U = Upland Brush
B = Paper Birch	K = Rock	P = Lowland Poplar	UM = Upland Mix Forest
C = Cedar	L = Lowland Brush	Q = Mixed Swamp Conifer	V = Bog or Marsh
D = Tread Bog	LM = Lowland Mix Forest	R = Red Pine	W = White Pine
E = Swamp Hardwoods	M = Maple, Beech, Birch	S = Black Spruce	X = Non Stocked
F = Spruce/Fir	MC = Mixed Conifer	T = Tamarack	Y = Sand
G = Grass	MD = Mixed Deciduous	Z = Water	
H = Hemlock	N = Marsh		

Density	
0 = Non Stocked	5 = Pole Timber Medium
1 = Seedling Sapling Poor	6 = Pole Timber Well
2 = Seedling Sapling Medium	7 = Saw Timber Poor
3 = Seedling Sapling Well	8 = Saw Timber Medium
4 = Pole Timber Poor	9 = Saw Timber Well

Payment Unit Number	Acres	Payment Unit Number	Acres
1	7.2	6	29.6
2	15.6	7	22.4
3	6.3	8	25.7
4	28.6	9	56.5
5	26.8	10	23.9

242.6 Acres
Bowl Choker Mix

Legend	
	Sale Boundary - Red Paint
	Private Line (Blue)
	Payment Unit (Yellow)
	Primary Forest Road
	Forest Access Route
	Administrative Access Only
	Paved Road
	Government Gravel/Dirt
	Private Gravel/Dirt
	Recreational Trails
	Field Grade Corner
	Survey Grade Corner





TIMBER SALE MAP

This information provided by authority of Part 525, 1994 PA 451, as amended.

Sale Number	Date	
63-053-25	08/13/2025	
Scale	Page	Of
1:15,840	2	2

Forest Management Unit	County	Mapped By:	Bonnette
Cadillac Mgt Unit	Missaukee	Cruised By:	Bonnette

Township	Range	Section(s) and Subdivision(s)
21N	05W	Sec. 26 NW,N1/2SW; Sec. 27 NE,S1/2SW,NESE,S1/2SE; Sec. 28 SE;

Cover Type			
A = Aspen	J = Jack Pine	O = Oak	U = Upland Brush
B = Paper Birch	K = Rock	P = Lowland Poplar	UM = Upland Mix Forest
C = Cedar	L = Lowland Brush	Q = Mixed Swamp Conifer	V = Bog or Marsh
D = Treed Bog	LM = Lowland Mix Forest	R = Red Pine	W = White Pine
E = Swamp Hardwoods	M = Maple, Beech, Birch	S = Black Spruce	X = Non Stocked
F = Spruce/Fir	MC = Mixed Conifer	T = Tamarack	Y = Sand
G = Grass	MD = Mixed Deciduous	Z = Water	
H = Hemlock	N = Marsh		

Density	
0 = Non Stocked	5 = Pole Timber Medium
1 = Seedling Sapling Poor	6 = Pole Timber Well
2 = Seedling Sapling Medium	7 = Saw Timber Poor
3 = Seedling Sapling Well	8 = Saw Timber Medium
4 = Pole Timber Poor	9 = Saw Timber Well

Payment Unit Number	Acres	Payment Unit Number	Acres
1	7.2	6	29.6
2	15.6	7	22.4
3	6.3	8	25.7
4	28.6	9	56.5
5	26.8	10	23.9

242.6 Acres
Bowl Choker Mix

Legend	
	Sale Boundary - Red Paint
	Private Line (Blue)
	Payment Unit (Yellow)
	Primary Forest Road
	Forest Access Route
	Administrative Access Only
	Paved Road
	Government Gravel/Dirt
	Private Gravel/Dirt
	Recreational Trails
	Field Grade Corner
	Survey Grade Corner

