



**DEPARTMENT OF NATURAL RESOURCES
STATE OF MICHIGAN
TIMBER SALE PROSPECTUS #7590**

SCHEDULED SALE DATE AND TIME: 3:00 p.m. (local time) on August 19, 2025.

LOCATION: NAUBINWAY DNR FIELD OFFICE, PO BOX 287, W11569 US2, NAUBINWAY, MI 49762.

CONTACT NAME: Josh Brinks

PHONE NUMBER: (906) 203-0210

PROSPECTUS NOTE: The bidder is advised to inspect the sale area and review the location, estimated volumes, operating costs and contract terms of proposed sales. Please be aware that some landowners may request 60 days or more notice for access across their land.

Notice is hereby given that bids will be received by the Unit Manager, SAULT STE MARIE MANAGEMENT UNIT, for certain timber on the following described lands:

Green Maple Mix (45-123-24) / T42N, R12W, SEC. 28, SW.

T42N, R12W, SEC. 33, N1/2NW.

T42N, R12W, SEC. 34, N1/2NE.

Mackinac County, Advertised Price \$123,846.70, 119.1 Acres, Hardwood, Sugar Maple.

TIMBER SALE INFORMATION

Green Maple Mix (45-123-24)

T42N, R12W, SEC. 28; T42N, R12W, SEC. 33; T42N, R12W, SEC. 34.
Mackinac County (Advertised Price \$123,846.70)

A timber sale contract for this lump sum, sealed bid timber sale will be awarded to the responsible bidder offering the highest sealed bid price. All units of volume listed below were estimated using the Inventory Manager computer program and the new Michigan taper model. Bids must be at or above the following advertised price for each product and species:

<u>PRODUCTS & SPECIES</u>	<u>ESTIMATED UNITS*</u>	<u>ADVERTISED PRICE</u>
Sawtimber		
Paper Birch	12.4 MBF	\$ 31.00 / MBF
Red Maple	11.3 MBF	\$ 97.00 / MBF
Sugar Maple	327.5 MBF	\$ 266.00 / MBF
Yellow Birch	1.2 MBF	\$ 49.00 / MBF
Pulpwood		
Balsam Fir	138 Cords	\$ 7.50 / Cord
Basswood	6 Cords	\$ 6.60 / Cord
Mixed Aspen	67 Cords	\$ 19.20 / Cord
Mixed Hardwood	2,544 Cords	\$ 12.55 / Cord
Paper Birch	132 Cords	\$ 3.75 / Cord
White Spruce	44 Cords	\$ 9.30 / Cord

* The total volume is statistically estimated within plus (+) or minus (-) 9.21 percent. There are an estimated 3,756 cords on this timber sale, plus or minus 346 cords at the 95% confidence level. The estimated units are final and not subject to adjustment. Prospective bidders are urged to examine this timber and to make their own estimates of quantity and quality.

BOND AND PAYMENT SCHEDULE:

- A bond in the amount of \$6,192.34 to insure faithful performance of the conditions of the contract will be deposited by the successful bidder within 21 days of the sale award.
- Cutting in any sale or unit without the required advance payment would be considered a trespass.
- Total payment must be paid in advance or according to the following schedule :
 - Ten percent (10%) of the sale value must be paid within 21 days of the sale award.
 - The 10% down payment will be credited towards the first unit cut.
 - Payment for each of the following units must be made before cutting begins in that unit:

<u>PAYMENT UNIT NUMBER</u>	<u>PERCENT OF TOTAL SALE VALUE</u>
01	8.9%
02	10.8%
03	23.0%
04	15.9%
05	17.8%
06	7.5%
07	8.5%
08	7.6%

- If no cutting takes place, the 10% down payment will not be refunded.
- Operations on the contract issued will terminate on 06/30/2028.

SALE STATISTICS

Volumes were calculated in cubic feet using the Michigan taper model. Cubic foot volume includes all wood inside bark for the product indicated. For display purposes, cubic feet were converted to cords and MBF using a simple conversion factor, e.g. 79 cubic feet per cord and 185 cubic feet per MBF. The cubic foot volumes are precise; the cords and MBF volumes are not. Cubic foot volume cannot be directly converted to cords or boards with precision.

SALE VOLUMES

The total estimated sale volume may not equal the sum of the species/products due to the nature of statistical calculations associated with double sampling methodology.

<u>VOLUME</u>		<u>STATISTICAL RANGE IN CORDS</u>		
<u>TOTAL CUBIC FEET</u>	<u>TOTAL CORDS</u>	<u>PERCENT ERROR</u>	<u>MINIMUM</u>	<u>MAXIMUM</u>
296,729	3,756	9.21%	3,410	4,102

VDU VOLUMES

A VDU is a Volume Determination Unit. Volumes and their associated statistics are calculated at the VDU level and summarized to the sale level. There is often a one to one relationship between a VDU and a Payment Unit, but not always, depending on the cruise design. Refer to the VDU TO PAYMENT UNIT table.

	VOLUME			RANGE IN CORDS	
VDU	TOTAL CUBIC FEET	TOTAL CORDS	PERCENT ERROR	MINIMUM	MAXIMUM
13	52,369	663	25.50%	494	832
23	118,393	1,499	13.17%	1,301	1,696
46	32,975	417	29.65%	294	541
50	92,992	1,177	16.84%	979	1,375
TOTAL:	296,729	3,756		3,068	4,445

VDU TO PAYMENT UNIT

When a VDU is associated with more than one Payment Unit (PU), the VDU volumes are assigned to the PU based on acres of the VDU within the PU.

VDU	VDU ACRES	PU	PU ACRES
TOTAL:			

DESCRIPTION OF TIMBER BY PU (PU)

PU	MARKET GROUP	PRODUCT	QUANTITY	UNIT	ACRES	ADVERTISE PRICE
1	Sugar Maple	Sawtimber	31.1	MBF	11.1	\$11,036.95
	Balsam Fir	Pulpwood	22	Cords		
	Mixed Aspen		4	Cords		
	<i>Quaking Aspen</i>		4	<i>Cords</i>		
	Mixed Hardwood		201	Cords		
	<i>Beech</i>		16	<i>Cords</i>		
	<i>Ironwood</i>		4	<i>Cords</i>		
	<i>Sugar Maple</i>		181	<i>Cords</i>		
2	Sugar Maple	Sawtimber	37.6	MBF	13.4	\$13,349.75
	Balsam Fir	Pulpwood	27	Cords		
	Mixed Aspen		5	Cords		
	<i>Quaking Aspen</i>		5	<i>Cords</i>		
	Mixed Hardwood		243	Cords		
	<i>Beech</i>		20	<i>Cords</i>		
	<i>Ironwood</i>		4	<i>Cords</i>		
	<i>Sugar Maple</i>		219	<i>Cords</i>		
3	Paper Birch	Sawtimber	3.8	MBF	19.0	\$28,520.15
	Red Maple		1.0	MBF		
	Sugar Maple		88.5	MBF		
	Yellow Birch		0.5	MBF		
	Balsam Fir	Pulpwood	2	Cords		
	Mixed Hardwood		372	Cords		
	<i>Beech</i>		6	<i>Cords</i>		
	<i>Red Maple</i>		1	<i>Cords</i>		
	<i>Sugar Maple</i>		363	<i>Cords</i>		
	<i>Yellow Birch</i>		2	<i>Cords</i>		
	Paper Birch		15	Cords		
4	Paper Birch	Sawtimber	2.6	MBF	13.1	\$19,672.10
	Red Maple		0.7	MBF		
	Sugar Maple		61.0	MBF		
	Yellow Birch		0.3	MBF		
	Balsam Fir	Pulpwood	1	Cords		
	Mixed Hardwood		258	Cords		
	<i>Beech</i>		4	<i>Cords</i>		
	<i>Red Maple</i>		1	<i>Cords</i>		
	<i>Sugar Maple</i>		251	<i>Cords</i>		
	<i>Yellow Birch</i>		2	<i>Cords</i>		
	Paper Birch		10	Cords		
5	Paper Birch	Sawtimber	3.0	MBF	14.7	\$22,094.40
	Red Maple		0.8	MBF		
	Sugar Maple		68.5	MBF		
	Yellow Birch		0.4	MBF		
	Balsam Fir	Pulpwood	2	Cords		
	Mixed Hardwood		289	Cords		
	<i>Beech</i>		5	<i>Cords</i>		
	<i>Red Maple</i>		1	<i>Cords</i>		
	<i>Sugar Maple</i>		281	<i>Cords</i>		
	<i>Yellow Birch</i>		2	<i>Cords</i>		
	Paper Birch		11	Cords		
6	Paper Birch	Sawtimber	3.0	MBF	12.7	\$9,235.00
	Red Maple		1.4	MBF		
	Sugar Maple		18.5	MBF		
	Balsam Fir	Pulpwood	18	Cords		
	Mixed Aspen		21	Cords		
	<i>Quaking Aspen</i>		21	<i>Cords</i>		

DESCRIPTION OF TIMBER BY PU (PU), CON'T

PU	MARKET GROUP	PRODUCT	QUANTITY	UNIT	ACRES	ADVERTISE PRICE				
6 con't	Mixed Hardwood	Pulpwood	265	Cords						
	Beech		6	Cords						
	Black Cherry		4	Cords						
	Red Maple		23	Cords						
	Sugar Maple		228	Cords						
	Yellow Birch		4	Cords						
	Paper Birch		59	Cords						
7	Red Maple	Sawtimber	3.9	MBF	18.5	\$10,521.40				
	Sugar Maple		11.8	MBF						
	Balsam Fir	Pulpwood	35	Cords						
	Basswood		3	Cords						
	Mixed Aspen		20	Cords						
	Balsam Poplar		8	Cords						
	Quaking Aspen		12	Cords						
	Mixed Hardwood		482	Cords						
	Beech		46	Cords						
	Ironwood		11	Cords						
	Red Maple		64	Cords						
	Sugar Maple		354	Cords						
	Yellow Birch		7	Cords						
	Paper Birch		20	Cords						
	White Spruce		23	Cords						
	8		Red Maple	Sawtimber			3.5	MBF	16.6	\$9,416.95
			Sugar Maple				10.5	MBF		
Balsam Fir		Pulpwood	31	Cords						
Basswood			3	Cords						
Mixed Aspen			17	Cords						
Balsam Poplar			7	Cords						
Quaking Aspen			10	Cords						
Mixed Hardwood			434	Cords						
Beech			42	Cords						
Ironwood			10	Cords						
Red Maple			58	Cords						
Sugar Maple			318	Cords						
Yellow Birch			6	Cords						
Paper Birch			17	Cords						
White Spruce			21	Cords						
TOTAL:			352.4	MBF						
TOTAL:			2,931	Cords						

Sale Specific Conditions & Requirements

Sale Name: Green Maple Mix

Sale Number: 45-123-24 Seq#: 2

1 - Sale Area

1.2 - Boundaries

1.2.1 - Painted Boundaries (9/19)

The sale boundary and Payment Unit boundaries are marked and identified by blue, red and yellow paint. Exterior sale boundary lines against private property are marked with blue paint. Exterior sale boundary lines against state are marked with red paint. Interior Payment Unit boundaries are marked with yellow paint. Retention patches are marked with red paint; no harvesting activities may occur within these areas. Yellow painted trees designating an interior Payment Unit boundary are only to be cut when all surrounding Payment Units have been paid. Yellow painted trees with green are not allowed to be cut.

2 - Timber Specifications

2.1 - Included Timber

2.1.1 - Clearcut Unit(s) with Unmerchantable Trees (6/14)

Within Payment Unit(s) 6, cut all trees that are two (2) inches or more at DBH, except do not cut any hemlock or cedar unless necessary for operational purposes.

2.1.7 - Leave Tree Marked Unit(s) (6/14)

Within Payment Unit(s) 1-5 & 7-8, all trees which meet minimum piece specifications in 2.2 Utilization are designated for cutting, except do not cut trees marked with green paint above and below stump height. In addition, do not cut any cedar or hemlock except for operability.

3 - Payments

3.3 - Pre-measured Sales

3.3.4 - Dividing Payment Units (7/14)

Payment Unit(s) 1-8 may be divided at the request of the Purchaser and upon approval of the Unit Manager. Dividing Payment Units is a contract modification which requires a Timber Sale Contract Amendment. There will be only one division per Payment Unit.

4 - Transportation

4.1 - Construction

4.1.3 - Slash and Earthen Piles (8/04)

Piles or windrows of earth along roads and landings that have been widened or constructed shall be leveled. Slash from road maintenance or construction, including stumps, shall be dispersed throughout the sale.

4.1.4 - Timber Removed for Construction (3/23)

Trees cut or damaged in the process of pre-approved road, landing, or skid trail construction will be decked in an area separate from other Designated Timber and not removed until measured by the Sale Administrator. Payment will be made at contract prices or average prices, if not on the contract.

4.1.6 - Road Construction (4/24)

Construction of new roads or improvements of existing roads shall be done in such a way as to minimize the environmental and visual impacts. Merchantable trees shall be cut and utilized unless otherwise directed. Non-merchantable trees shall be severed and laid flat on the ground. Slash shall be scattered, and not left in windrows and kept a minimum of 10 feet back from the road edge. Stumps shall be set upright, not left on edge, and be moved at least 10 feet away from the road edge. Disturbed soil shall be feathered into the woods and not left in berms or windrows.

4.1.7 - Road Closure (10/11)

All new roads built into the sale must be blocked to vehicle traffic upon completion of the sale. Overgrown roads that are

reopened shall be considered new roads. In general, this will require constructing a four (4') foot high berm of stumps and logs covered with earth. These roads must be rendered impassable to cars and trucks. Contact the Sale Administrator for specific details of design and placement.

4.2 - Maintenance

4.2.1 - Hauling Restriction (12/08)

Hauling is restricted on Leveille Rd. The restriction may occur during spring breakup. Contact the Mackinac County Road Commission for the necessary permits.

4.2.3 - Road maintenance (8/13)

The following road maintenance is required: Within 60 days of completion of hauling, or if no hauling occurs for 60 days, the road must be maintained and graded. This includes cleaning of drainage areas, grading, crowning and filling with gravel, if necessary. Damages will be assessed if grading/repair does not occur.

4.2.5 - Two Wheel Drive Condition (2/04)

All existing trail roads on and adjacent to the Sale Area must be passable by two-wheel drive traffic for the duration of the sale.

4.4 - Access

4.4.2 - Alternate route on private property (2/04)

It is the Purchaser's responsibility to obtain access across private land for any routes other than the route shown on the Timber Sale Map.

5 - Operations

5.2 - Conduct of Operations

5.2.1 - Slash

5.2.1.11 - Slash for Reforestation (3/21)

To facilitate reforestation, Payment Units 1-5 & 7-8 shall be left with slash evenly distributed. Tops shall not be crushed or ran over unless in a main skid trail. Preferably, unbroken tops shall be left whole and intact, and placed within gaps created during harvesting operations.

5.2.2 - Hazard Trees/Snags

5.2.2.1 - Den Trees (10/16)

Obvious hollow and/or den trees shall be protected and left standing unless they are a safety hazard.

5.2.3 - Operating Restrictions

5.2.3.1 - Operating Restrictions (9/11)

Within Payment Unit(s) 1-8, unless changed by written agreement, cutting and skidding are limited to the period of December 1 to March 31. This restriction is because deer yard restrictions.

5.2.4 - Dead and Down Creation

5.2.4.3 - Dead and Down Creation, Dead Trees (6/07)

Except as provided for in General Condition and Requirement 5.2.2, no dead trees, standing or down, are to be cut, skidded, or processed.

5.2.32 - Decking/Landing Restoration (9/13)

All decking and landing areas must have the surface area restored to a condition equal to or better than before. This is to ensure the proper regeneration of the stand. Wood debris, chips and "cookies" from trimmings must be removed or scattered away from landing and loading areas and may not be windrowed on the edge.

5.2.38 - No Decking Against Live Trees (2/04)

Cut products may not be decked against unmarked or designated leave trees.

5.8 - Protection of Endangered Species

5.8.5 - Protection of Raptor Nests (3/13)

All trees with raptor nests will be protected if found during harvesting operations. Notification will be made to the Unit Manager or his/her representative who will notify the Wildlife Biologist so an onsite evaluation and recommendation can be made, if necessary.

TIMBER SALE MAP

This information provided by authority of Part 525, 1994 PA 451, as amended.

Sale Number
45-123-24Date
09/30/2024Forest Management Unit
Sault Ste Marie Mgt UnitCounty
Mackinac

Mapped By: Plato

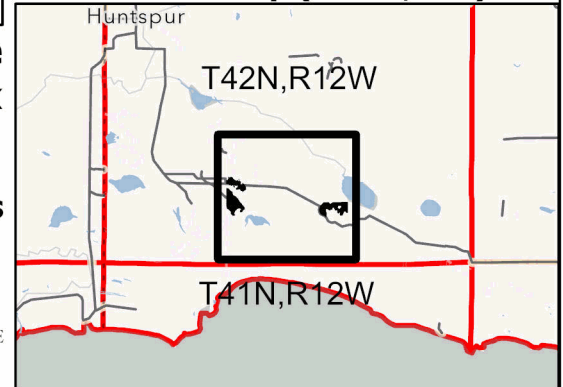
Cruised By: Naubinway FO Staff

Scale
1:24,000Page
1Of
1Township
42NRange
12WSection(s) and
Subdivision(s) Sec. 28 SW; Sec. 33 N1/2NW; Sec. 34 N1/2NE;**Cover Type**

A = Aspen	J = Jack Pine	O = Oak	U = Upland Brush
B = Paper Birch	K = Rock	P = Lowland Poplar	UM = Upland Mix Forest
C = Cedar	L = Lowland Brush	Q = Mixed Swamp Conifer	V = Bog or Marsh
D = Treed Bog	LM = Lowland Mix Forest	R = Red Pine	W = White Pine
E = Swamp Hardwoods	M = Maple, Beech, Birch	S = Black Spruce	X = Non Stocked
F = Spruce/Fir	MC = Mixed Conifer	T = Tamarack	Y = Sand
G = Grass	MD = Mixed Deciduous		Z = Water
H = Hemlock	N = Marsh		

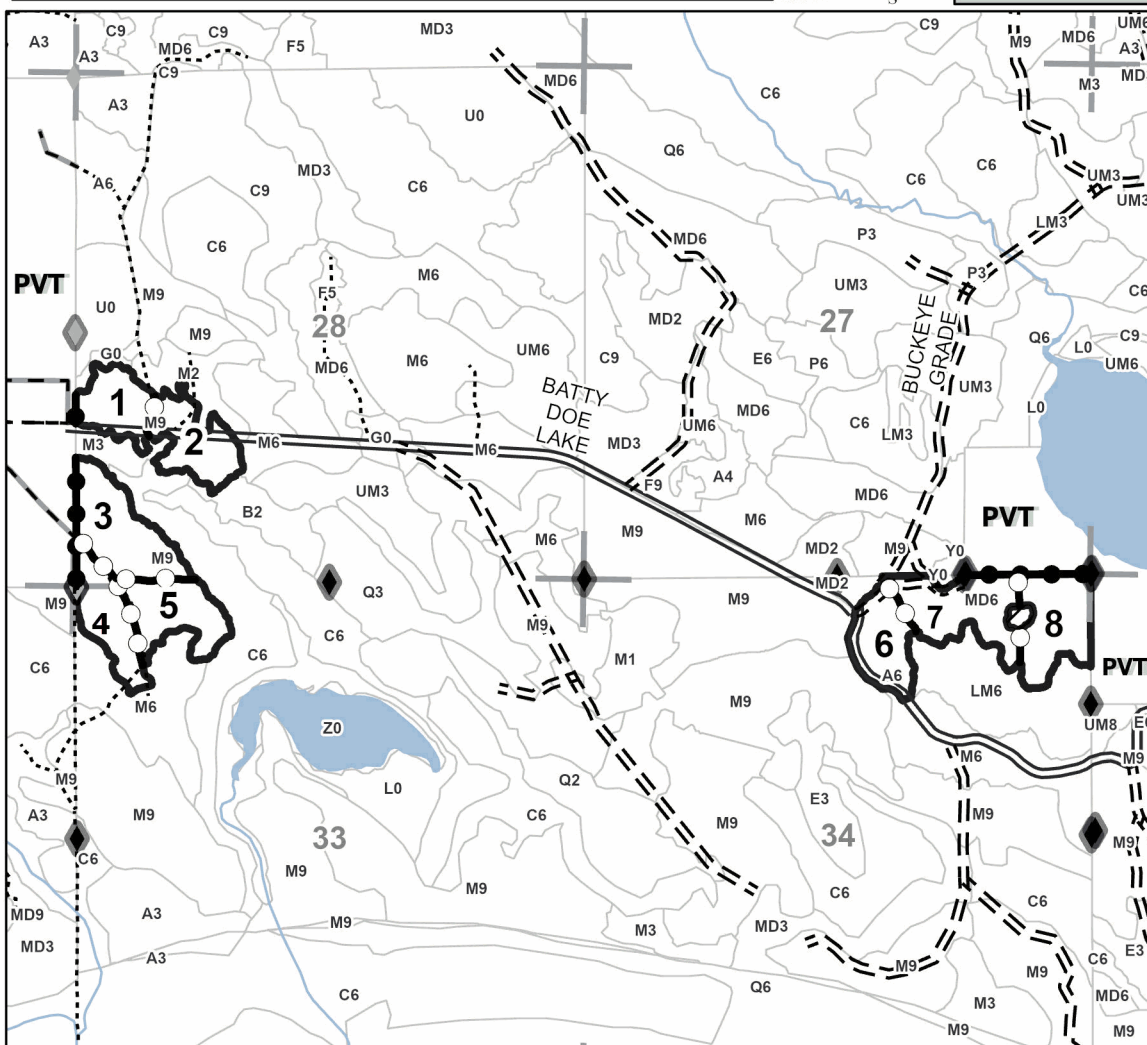
Density

0 = Non Stocked	5 = Pole Timber Medium
1 = Seedling Sapling Poor	6 = Pole Timber Well
2 = Seedling Sapling Medium	7 = Saw Timber Poor
3 = Seedling Sapling Well	8 = Saw Timber Medium
4 = Pole Timber Poor	9 = Saw Timber Well

Locator Map (1:200,000)**Green Maple Mix****119.1 Acres**

PU #	Acres	PU #	Acres
1	11.1	5	14.7
2	13.4	6	12.7
3	19	7	18.5
4	13.1	8	16.6

0 0.38 0.75 1.5 Miles

**Legend**

- Against State (Red)
- Stand
- Payment Unit (Yellow)
- Private Line (Blue)
- Paved Road
- Gravel Road
- County Road - Seasonal
- Private Road
- Primary Forest Road
- Forest Access Route
- Administrative Access Only
- Paved Road
- Government Gravel/Dirt
- Private Gravel/Dirt
- Field Grade Corner
- Survey Grade Corner
- Section Corners
- Retention Areas

Use QR Code to open Map in App

