



**DEPARTMENT OF NATURAL RESOURCES
STATE OF MICHIGAN**

TIMBER SALE PROSPECTUS #7681

REVISION NOTICE #1 - June 26, 2025

SCHEDULED SALE DATE AND TIME: **9:30 a.m. (local time) on Tuesday, July 8, 2025**

LOCATION: **GAYLORD MGMT UNIT, 1732 West M 32, Gaylord, MI 49735**

This prospectus has been modified with the following changes.

Ice Fisherman Salvage (52-107-25) has been withdrawn from this prospectus.

We apologize for any inconvenience this may have caused . If you need assistance, please contact Lucas Merrick at 989-732-3541 ext. 5440.



**DEPARTMENT OF NATURAL RESOURCES
STATE OF MICHIGAN
TIMBER SALE PROSPECTUS #7681**

SCHEDULED SALE DATE AND TIME: 9:30 a.m. (local time) on July 8, 2025.

LOCATION: GAYLORD MGMT UNIT, 1732 WEST M 32, GAYLORD, MI 49735.

CONTACT NAME: Lucas Merrick

PHONE NUMBER: (989) 732-3541

PROSPECTUS NOTE: The bidder is advised to inspect the sale area and review the location, estimated volumes, operating costs and contract terms of proposed sales. Please be aware that some landowners may request 60 days or more notice for access across their land.

Notice is hereby given that bids will be received by the Unit Manager, GAYLORD MANAGEMENT UNIT, for certain timber on the following described lands:

Ice-till Believe in You (52-106-25) / T33N, R02W, SEC. 1 , NW.

T34N, R02W, SEC. 21, NWNE.

T34N, R02W, SEC. 26, SWNW,SW.

T34N, R02W, SEC. 27, NENW,NE.

T34N, R02W, SEC. 35, NW,NE,N1/2SW,SESW,SE.

T34N, R02W, SEC. 36, SESW,S1/2SE.

Cheboygan County, Advertised Price \$12,900.00, 370.1 Acres, Red Pine.

SALE NOTE: This sale has been reduced, as it was a "no bid" on previous advertisement.

The Sale Area has received damage from the ice storm in late March 2025. The Purchaser should harvest the wood as soon as possible.

This is a red pine salvage sale. Payment Unit 1 is final harvest. Payment Unit 3 is a partial harvest and is an optional unit; damages will not be assessed for unharvested acreage in this Unit. See sale maps and specs for more details.

TIMBER SALE INFORMATION

Ice-till Believe in You (52-106-25)

T33N, R02W, SEC. 1; T34N, R02W, SEC. 21; T34N, R02W, SEC. 26; T34N, R02W, SEC. 27; T34N, R02W, SEC. 35; T34N, R02W, SEC. 36.

SALE NOTE: This sale has been reduced, as it was a "no bid" on previous advertisement.

The Sale Area has received damage from the ice storm in late March 2025. The Purchaser should harvest the wood as soon as possible.

This is a red pine salvage sale. Payment Unit 1 is final harvest. Payment Unit 3 is a partial harvest and is an optional unit; damages will not be assessed for unharvested acreage in this Unit. See sale maps and specs for more details.

A timber sale contract for this scaled, sealed bid timber sale will be awarded to the responsible bidder offering the highest sealed bid price. All units of volume listed below were estimated using the Inventory Manager computer program and the new Michigan taper model. Bids must be at or above the following advertised price for each product and species:

<u>PRODUCTS & SPECIES</u>	<u>ESTIMATED UNITS*</u>	<u>ADVERTISED PRICE</u>
Pulpwood		
Red Pine	2,580 Cords	\$ 5.00 / Cord

* The estimated units are final and not subject to adjustment. Prospective bidders are urged to examine this timber and to make their own estimates of quantity and quality.

BOND AND PAYMENT SCHEDULE:

1. A bond in the amount of \$1,000.00 to insure faithful performance of the conditions of the contract will be deposited by the successful bidder within 21 days of the sale award.
2. Cutting in any sale or unit without the required advance payment would be considered a trespass.
3. Total payment must be paid in advance or according to the following schedule:
 - (a) Ten percent (10%) of the sale value must be paid within 21 days of the sale award.
 - (b) The 10% down payment will be credited towards the first unit cut.
 - (c) Payment for each of the following units must be made before cutting begins in that unit:

PAYMENT UNIT NUMBER	PERCENT OF TOTAL SALE VALUE
01	2.8%
02	11.4%
03	85.8%
4. If no cutting takes place, the 10% down payment will not be refunded.
5. Operations on the contract issued will terminate on 06/30/2027.

SALE STATISTICS

Volumes were calculated in cubic feet using the Michigan taper model. Cubic foot volume includes all wood inside bark for the product indicated. For display purposes, cubic feet were converted to cords and MBF using a simple conversion factor, e.g. 79 cubic feet per cord and 185 cubic feet per MBF. The cubic foot volumes are precise; the cords and MBF volumes are not. Cubic foot volume cannot be directly converted to cords or boards with precision.

SALE VOLUMES

The total estimated sale volume may not equal the sum of the species/products due to the nature of statistical calculations associated with double sampling methodology.

VOLUME			STATISTICAL RANGE IN CORDS	
TOTAL CUBIC FEET	TOTAL CORDS	PERCENT ERROR	MINIMUM	MAXIMUM
203,981	2,582	0.00%	2,582	2,582

VDU VOLUMES

A VDU is a Volume Determination Unit. Volumes and their associated statistics are calculated at the VDU level and summarized to the sale level. There is often a one to one relationship between a VDU and a Payment Unit, but not always, depending on the cruise design. Refer to the VDU TO PAYMENT UNIT table.

	VOLUME			RANGE IN CORDS	
VDU	TOTAL CUBIC FEET	TOTAL CORDS	PERCENT ERROR	MINIMUM	MAXIMUM
26	5,722	72	0.00%	72	72
30	21,739	275	0.00%	275	275
37	129,561	1,640	0.00%	1,640	1,640
42	10,841	137	0.00%	137	137
61	5,774	73	0.00%	73	73
69	4,222	53	0.00%	53	53
80	8,173	103	0.00%	103	103
106	17,950	227	0.00%	227	227
TOTAL:	203,981	2,582		2,582	2,582

VDU TO PAYMENT UNIT

When a VDU is associated with more than one Payment Unit (PU), the VDU volumes are assigned to the PU based on acres of the VDU within the PU.

VDU	VDU ACRES	PU	PU ACRES
TOTAL:			

DESCRIPTION OF TIMBER BY PU (PU)

PU	MARKET GROUP	PRODUCT	QUANTITY	UNIT	ACRES	ADVERTISE PRICE
1	Red Pine	Pulpwood	72	Cords	10.4	\$360.00
2	Red Pine	Pulpwood	293	Cords	42.2	\$1,465.00
3	Red Pine	Pulpwood	2,215	Cords	317.5	\$11,075.00
TOTAL:			2,580	Cords		

Sale Specific Conditions & Requirements

Sale Name: Ice-till Believe in You

Sale Number: 52-106-25 Seq#: 3

1 - Sale Area

1.2 - Boundaries

1.2.1 - Painted Boundaries (9/19)

The sale boundary and Payment Unit boundaries are marked and identified by blue and red paint. Some paint may be older and faded and can be refreshed if so desired by the Purchaser. Exterior sale boundary lines against private property are marked with blue paint. Exterior sale boundary lines against state are marked with red paint. Blue painted boundary line trees are not included timber and are not to be harvested.

2 - Timber Specifications

2.1 - Included Timber

2.1.1 - Clearcut Unit(s) with Unmerchantable Trees (6/14)

Within Payment Unit(s) 1, cut all red pine trees that are two (2) inches or more at DBH regardless of damage, except do not cut any trees marked with teal paint. Trees marked in teal paint are of wildlife value and are to be protected.

2.1.4 - Designated Timber Unit(s) (6/17)

Within Payment Unit(s) 2 and 3, all damaged red pine are designated for cutting. Red pine with snapped tops or boles, entire or partial, and entire but arching boles, are considered damaged timber. Note that Payment Unit 3 is an optional Payment Unit.

2.1.11 - Description of Timber Note (2/04)

Note that this is an ice storm salvage sale. All Payment Units will be scaled by the Sale Administrator. Chipping of Sale Area will not be required but is encouraged. If sale is chipped, the Purchaser must provide electronic confirmation of scale tickets at minimum of twice per week. To convert red pine chip weight to cords, we will use a conversion of 1 cord = 1.9 tons or 1 cord = 3,800 pounds. This is from the USDA's Timber Management Field Book, 2008 Edition table 2.10 Weight Table for Various Woods.

In addition, Payment Unit 3 is an optional Payment Unit and can be removed at the request of the Purchaser via a Timber Sale Contract Amendment. No damages will be charged for Payment Unit 3 if it is not harvested. Additionally, no damages will be assessed for unharvested portions of Payment Unit 2 as long as an effort is made to salvage the damaged timber in each area.

2.2 - Utilization

2.2.3 - Stump Heights (12/24)

Stump heights within Payment Unit 1 shall not exceed six (6) inches for all trees. This is in order to facilitate planting operations.

3 - Payments

3.2 - Scaled Sales

3.2.1 - Scale Location (2/04)

Forest products will be placed for measurement in an area identified by the Sale Administrator. In addition, negotiate with the Sale Administrator to determine the frequency of the scaling.

4 - Transportation

4.1 - Construction

4.1.3 - Slash and Earthen Piles (8/04)

Piles or windrows of earth along roads and landings that have been widened or constructed shall be leveled. Slash from road

maintenance or construction, including stumps, shall be dispersed throughout the sale unless otherwise utilized or directed by the Sale Administrator.

4.1.8 - Road Work (1) (8/07)

Road opening may be required to access any Payment Unit. The wood removed for road opening may be utilized by the Producer for contract price (or current market value if not on contract) and will be scaled by the Sale Administrator.

4.2 - Maintenance

4.2.5 - Two Wheel Drive Condition (2/04)

All existing trail roads on and adjacent to the Sale Area must be passable by two-wheel drive traffic for the duration of the sale.

5 - Operations

5.2 - Conduct of Operations

5.2.1 - Slash

5.2.1.8 - Slash Height (12/08)

No slash may exceed 24 inches in height. Slash may not exceed more than 48 inches in length on any portions greater than 5 inches in diameter at the small end. This is to facilitate future planting operations in Payment Unit 1 and reduce slash and fuels in Payment Units 2 and 3. Alternatively, slash may be concentrated on the edges of the Payment Unit 1, 2, and 3, as directed by the Timber Sale Administrator. Slash may not be concentrated along any boundary adjacent to Private property.

5.4 - Soil Protection

5.4.1 - Rutting Restriction, General (7/16)

Operations are to cease immediately if equipment and weather conditions result in rutting of roads and/or skid trails which are 12 inches or greater in depth and 50 feet in length. The Unit Manager or his/her representative may restrict hauling and/or skidding if ruts exceed the specified depth. With the Unit Manager or his/her representative's approval, the Purchaser may return to the area when the risk of rutting has decreased.

5.8 - Protection of Endangered Species

5.8.5 - Protection of Raptor Nests (3/13)

All trees with raptor nests will be protected if found during harvesting operations. Notification will be made to the Unit Manager or his/her representative who will notify the Wildlife Biologist so an onsite evaluation and recommendation can be made, if necessary.

6 - Safety and Fire Prevention

6.2 - Signing

6.2.1 - Road Posting (10/20)

The Purchaser is responsible for posting and maintaining caution signs on haul routes prior to beginning operations. The road must be posted at appropriate distances from the Sale Area to warn of logging activity and truck traffic. Signs must be removed when harvest operations are suspended or completed. The Purchaser will provide these signs.

7 - Other Conditions

7.2 - Extensions

7.2.2 - No Extensions (3/09)

There will be no extensions granted on this contract.

7.5 - Loss

7.5.1 - Deteriorating Timber (7/09)

The Sale Area has received damage from an ice storm in late March 2025. The Purchaser should harvest the wood as soon as possible. The Department of Natural Resources is held free of responsibility of any further damage or deterioration due to

delay in harvesting.



TIMBER SALE MAP

This information provided by authority of Part 525, 1994 PA 451, as amended.

Sale Number
52-106-25

Date
05/13/2025

Forest Management Unit
Gaylord Mgt Unit

County
Cheboygan

Mapped By: TSP
Cruised By: scaled

Scale
1:20,275

Page
1

Of
3

Township
33N / 34N

Range
02W

Section(s) and
Subdivision(s)

NW,NE,N1/2SW,SESW,SE; Sec. 36 SESW,S1/2SE;
Sec. 1 NW; Sec. 21 NWNE; Sec. 26 SWNW,SW; Sec. 27 NENW,NE; Sec. 35

Cover Type

A = Aspen	J = Jack Pine	O = Oak	U = Upland Brush
B = Paper Birch	K = Rock	P = Lowland Poplar	UM = Upland Mix Forest
C = Cedar	L = Lowland Brush	Q = Mixed Swamp Conifer	V = Bog or Marsh
D = Treed Bog	LM = Lowland Mix Forest	R = Red Pine	W = White Pine
E = Swamp Hardwoods	M = Maple, Beech, Birch	S = Black Spruce	X = Non Stocked
F = Spruce/Fir	MC = Mixed Conifer	T = Tamarack	Y = Sand
G = Grass	MD = Mixed Deciduous		Z = Water
H = Hemlock	N = Marsh		

Density

0 = Non Stocked	5 = Pole Timber Medium
1 = Seedling Sapling Poor	6 = Pole Timber Well
2 = Seedling Sapling Medium	7 = Saw Timber Poor
3 = Seedling Sapling Well	8 = Saw Timber Medium
4 = Pole Timber Poor	9 = Saw Timber Well

Payment Unit Number	Acres
1	10.4
2	42.1
3	317.5

PU 1 - Final Harvest
PU 2 - Partial Salvage
PU 3 - Partial Salvage (optional)

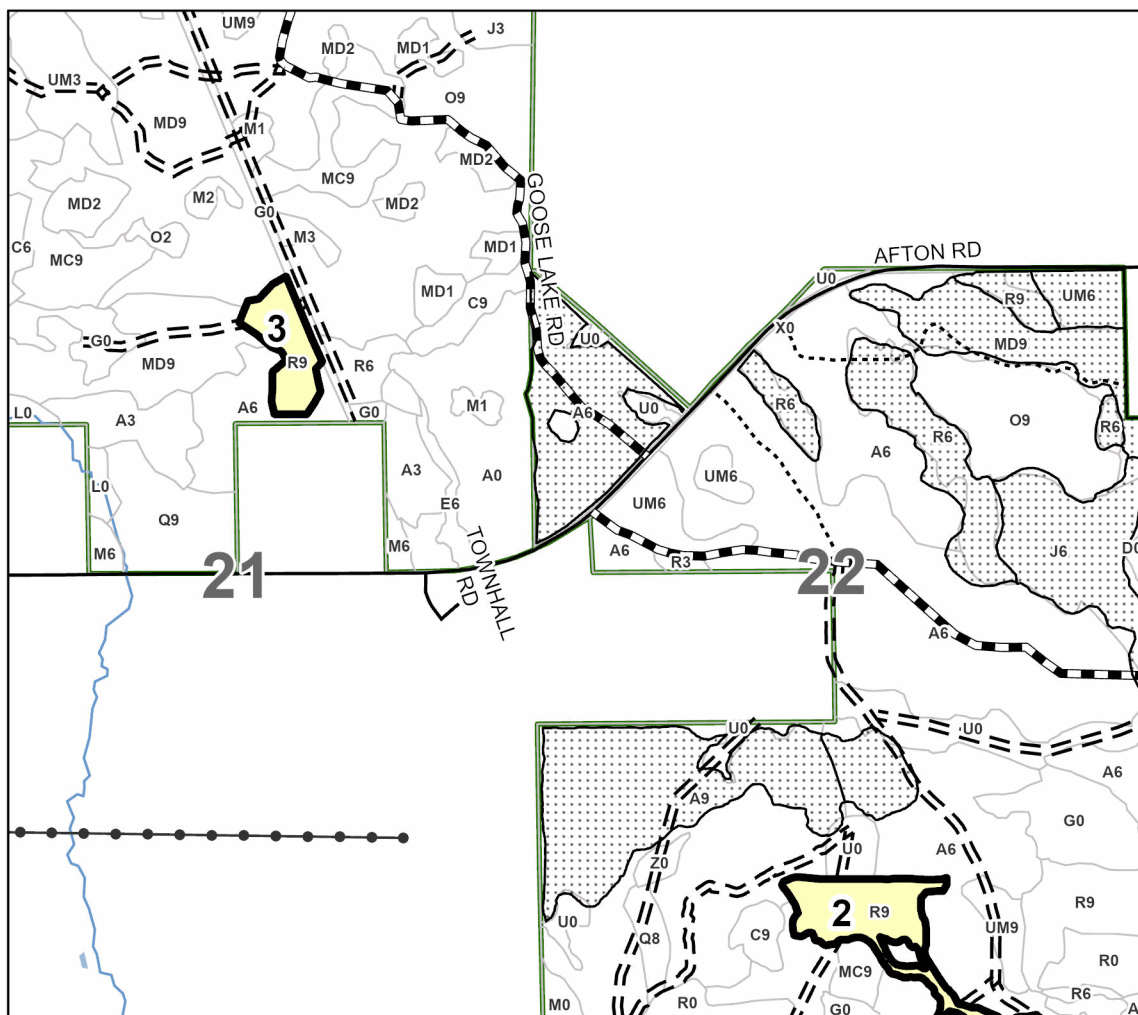
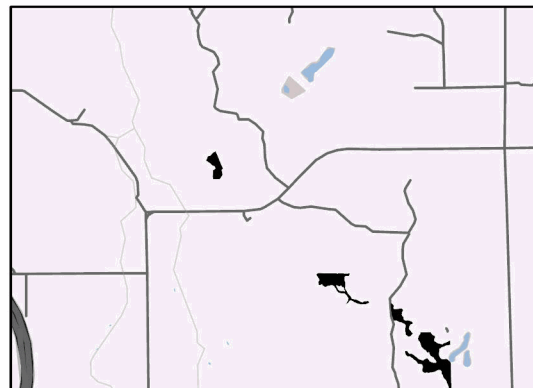
Ice-till
Believe in
You

370.1 Acres

Compartments 170, 171, 172, 173



Locator Map 1:100,000



Legend

- Sale Boundary (Red)
- Forest Access Route
- Administrative Access Only
- Paved Road
- Government Gravel/Dirt
- Powerline

Use QR Code to
open Map in App





TIMBER SALE MAP

This information provided by authority of Part 525, 1994 PA 451, as amended.

Sale Number
52-106-25

Date
05/13/2025

Forest Management Unit
Gaylord Mgt Unit

County
Cheboygan

Mapped By: TSP
Cruised By: scaled

Scale
1:20,275

Page
2

Of
3

Township
33N / 34N

Range
02W

Section(s) and Subdivision(s)
NW,NE,N1/2SW,SESW,SE; Sec. 36 SESW,S1/2SE;
Sec. 1 NW; Sec. 21 NWNE; Sec. 26 SWNW,SW; Sec. 27 NENW,NE; Sec. 35

Cover Type

A = Aspen	J = Jack Pine	O = Oak	U = Upland Brush
B = Paper Birch	K = Rock	P = Lowland Poplar	UM = Upland Mix Forest
C = Cedar	L = Lowland Brush	Q = Mixed Swamp Conifer	V = Bog or Marsh
D = Treed Bog	LM = Lowland Mix Forest	R = Red Pine	W = White Pine
E = Swamp Hardwoods	M = Maple, Beech, Birch	S = Black Spruce	X = Non Stocked
F = Spruce/Fir	MC = Mixed Conifer	T = Tamarack	Y = Sand
G = Grass	MD = Mixed Deciduous		Z = Water
H = Hemlock	N = Marsh		

Density

0 = Non Stocked	5 = Pole Timber Medium
1 = Seedling Sapling Poor	6 = Pole Timber Well
2 = Seedling Sapling Medium	7 = Saw Timber Poor
3 = Seedling Sapling Well	8 = Saw Timber Medium
4 = Pole Timber Poor	9 = Saw Timber Well

Payment Unit Number	Acres
1	10.4
2	42.1
3	317.5

PU 1 - Final Harvest
PU 2 - Partial Salvage
PU 3 - Partial Salvage (optional)

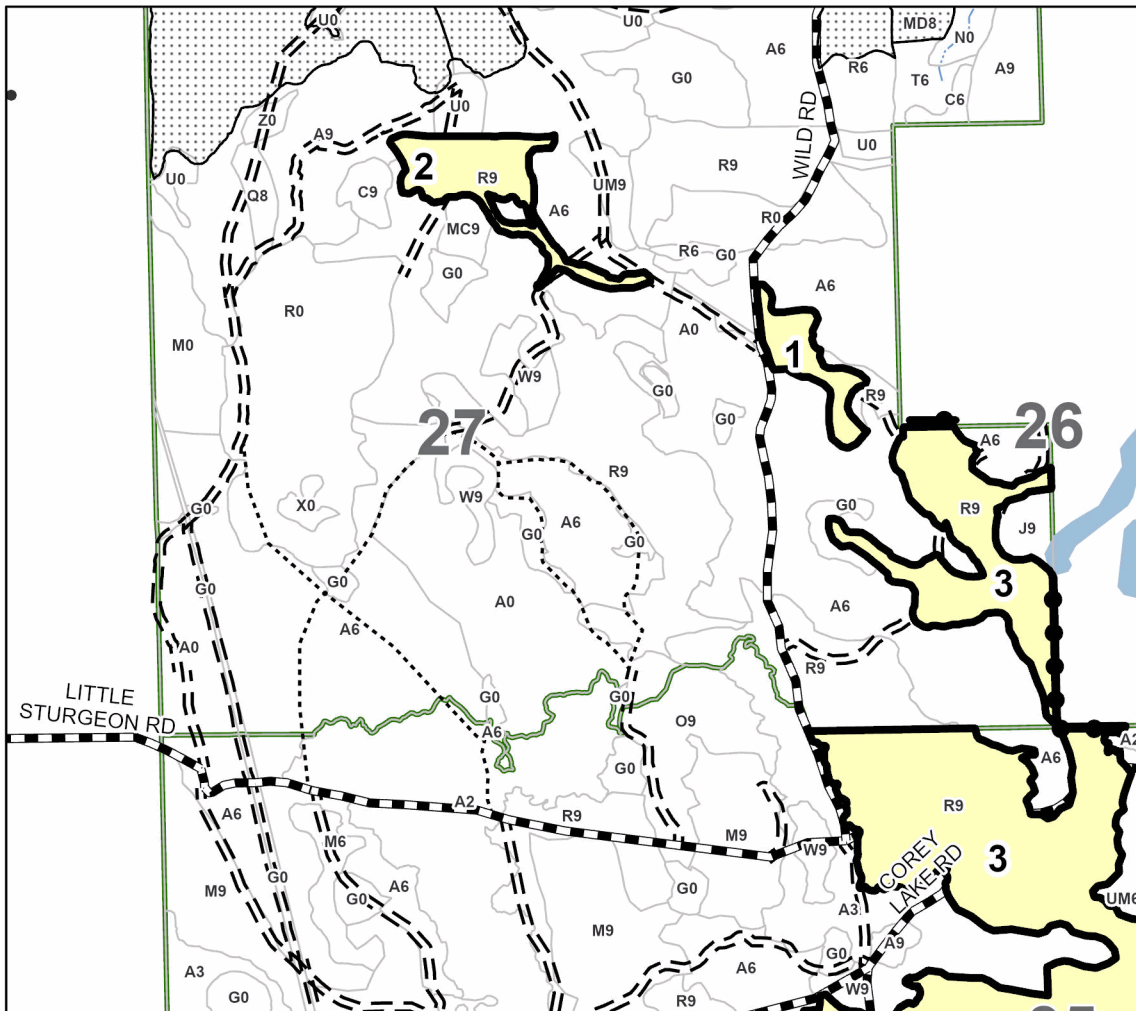
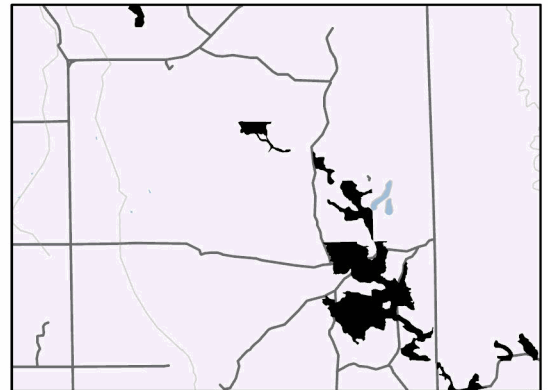
Ice-till
Believe in
You

370.1 Acres

Compartments 170, 171, 172, 173



Locator Map 1:100,000



Legend

- Sale Boundary (Red)
- Private Line (Blue)
- Forest Access Route
- Administrative Access Only
- Government Gravel/Dirt
- Private Gravel/Dirt
- Powerline

Use QR Code to
open Map in App



**TIMBER SALE MAP**

This information provided by authority of Part 525, 1994 PA 451, as amended.

Forest Management Unit			County	Mapped By: TSP	Scale 1:20,275	Page 3	Of 3
Gaylord Mgt Unit			Cheboygan	Cruised By: scaled			
Township 33N / 34N	Range 02W	Section(s) and NW,NE,N1/2SW,SESW,SE; Sec. 36 SESW,S1/2SE; Subdivision(s) Sec. 1 NW; Sec. 21 NWNE; Sec. 26 SWNW,SW; Sec. 27 NENW,NE; Sec. 35					

Cover Type

A = Aspen	J = Jack Pine	O = Oak	U = Upland Brush
B = Paper Birch	K = Rock	P = Lowland Poplar	UM = Upland Mix Forest
C = Cedar	L = Lowland Brush	Q = Mixed Swamp Conifer	V = Bog or Marsh
D = Treed Bog	LM = Lowland Mix Forest	R = Red Pine	W = White Pine
E = Swamp Hardwoods	M = Maple, Beech, Birch	S = Black Spruce	X = Non Stocked
F = Spruce/Fir	MC = Mixed Conifer	T = Tamarack	Y = Sand
G = Grass	MD = Mixed Deciduous		Z = Water
H = Hemlock	N = Marsh		

Density

0 = Non Stocked	5 = Pole Timber Medium
1 = Seedling Sapling Poor	6 = Pole Timber Well
2 = Seedling Sapling Medium	7 = Saw Timber Poor
3 = Seedling Sapling Well	8 = Saw Timber Medium
4 = Pole Timber Poor	9 = Saw Timber Well

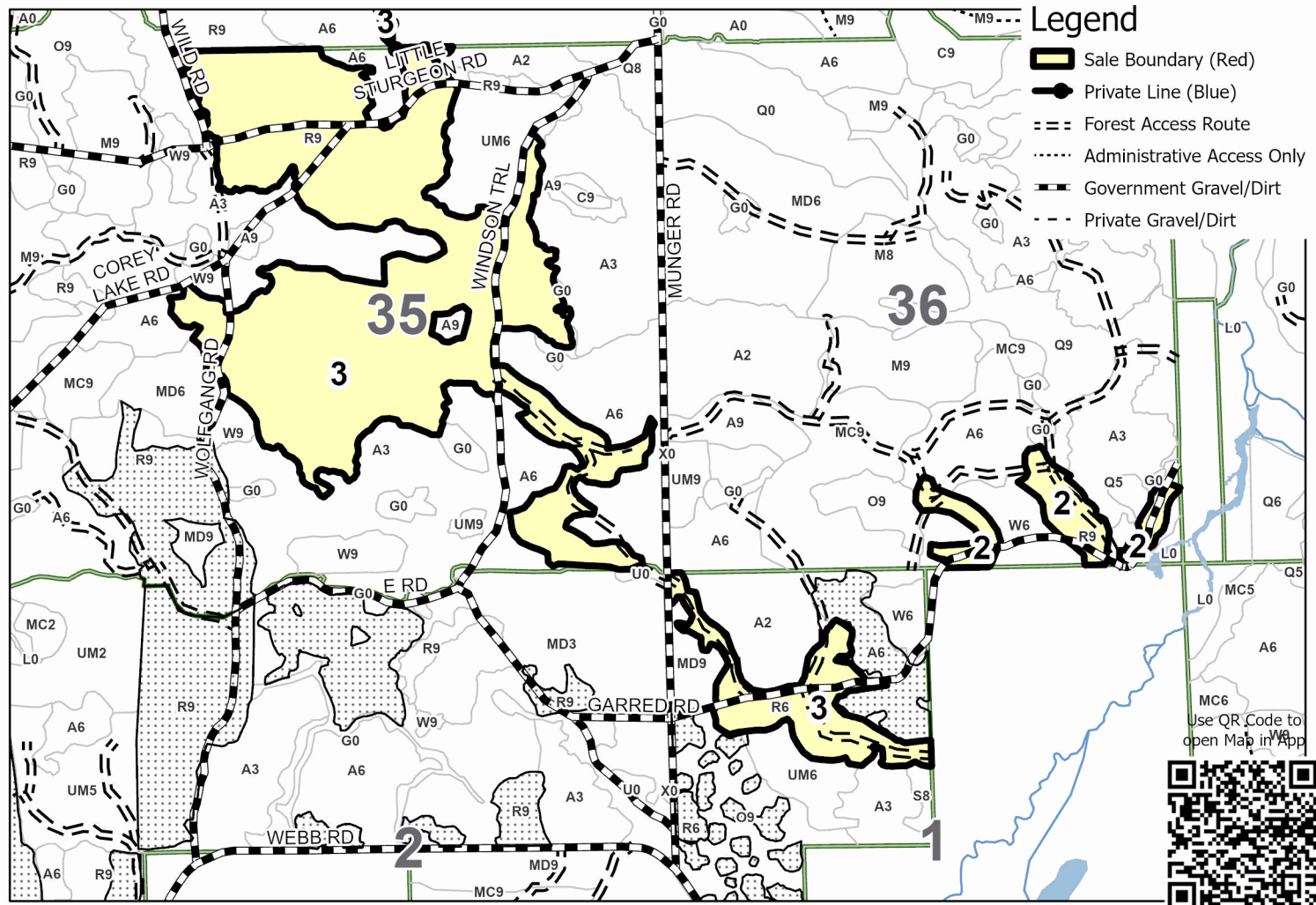
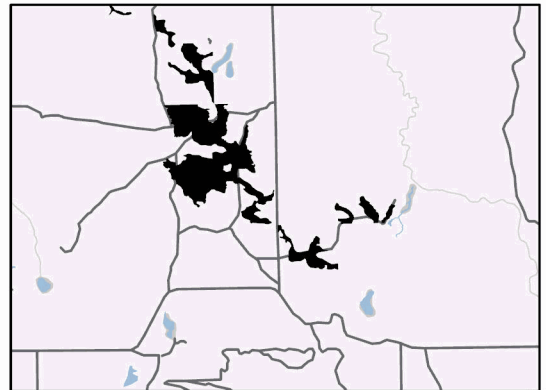
Payment Unit Number	Acres
1	10.4
2	42.1
3	317.5

PU 1 - Final Harvest
PU 2 - Partial Salvage
PU 3 - Partial Salvage (optional)

Ice-till
Believe in
You

370.1 Acres

Compartments 170, 171, 172, 173

**Locator Map 1:100,000**

**TIMBER SALE MAP**

This information provided by authority of Part 525, 1994 PA 451, as amended.

Sale Number
52-106-25Date
05/13/2025

Forest Management Unit

County

Mapped By: TSP

Scale

Page

Of

Gaylord Mgt Unit

Cheboygan

Cruised By: ESTIMATED DAMAGE

1:32,000

1

1

Township
33N / 34NRange
02WSection(s) and NW,NE,N1/2SW,SESW,SE; Sec. 36 SESW,S1/2SE;
Subdivision(s) Sec. 1 NW; Sec. 21 NWNE; Sec. 26 SWNW,SW; Sec. 27 NENW,NE; Sec. 35**Cover Type**

A = Aspen	J = Jack Pine	O = Oak	U = Upland Brush
B = Paper Birch	K = Rock	P = Lowland Poplar	UM = Upland Mix Forest
C = Cedar	L = Lowland Brush	Q = Mixed Swamp Conifer	V = Bog or Marsh
D = Treed Bog	LM = Lowland Mix Forest	R = Red Pine	W = White Pine
E = Swamp Hardwoods	M = Maple, Beech, Birch	S = Black Spruce	X = Non Stocked
F = Spruce/Fir	MC = Mixed Conifer	T = Tamarack	Y = Sand
G = Grass	MD = Mixed Deciduous		Z = Water
H = Hemlock	N = Marsh		

Density

0 = Non Stocked	5 = Pole Timber Medium
1 = Seedling Sapling Poor	6 = Pole Timber Well
2 = Seedling Sapling Medium	7 = Saw Timber Poor
3 = Seedling Sapling Well	8 = Saw Timber Medium
4 = Pole Timber Poor	9 = Saw Timber Well

Locator Map 1:100,000