



**DEPARTMENT OF NATURAL RESOURCES
STATE OF MICHIGAN**

TIMBER SALE PROSPECTUS #7754

REVISION NOTICE #1 - November 25, 2025

SCHEDULED SALE DATE AND TIME: **10:00 a.m. (local time) on Monday, December 15, 2025**

LOCATION: **SAULT DNR CUSTOMER SERVICE CENTER, 4131 S. M-129, Sault Ste Marie, MI 49783**

This prospectus has been modified with the following changes.

The sale map(s) for the D.I. Deep Abyss timber sale (45-011-25) has been updated. The map which was originally advertised was missing payment unit labels. Please use the attached sale map(s) when bidding on this sale and disregard the original sale map(s) sent with the prospectus.

We apologize for any inconvenience this may have caused. If you need assistance, please contact Josh Brinks at 906-203-0210.

**TIMBER SALE MAP**

This information provided by authority of Part 525, 1994 PA 451, as amended.

Sale Number

45-011-25

Date

08/29/2025

Forest Management Unit

Sault Ste Marie Mgt Unit

County

Chippewa

Mapped By: Fanelli

Cruised By: Fanelli

Scale

1:15,840

Page

1

Of

1

Township

41N

Range

06E

Section(s) and

Subdivision(s) Sec. 10 NW; Sec. 11 N1/2SW; Sec. 9 E1/2NE;

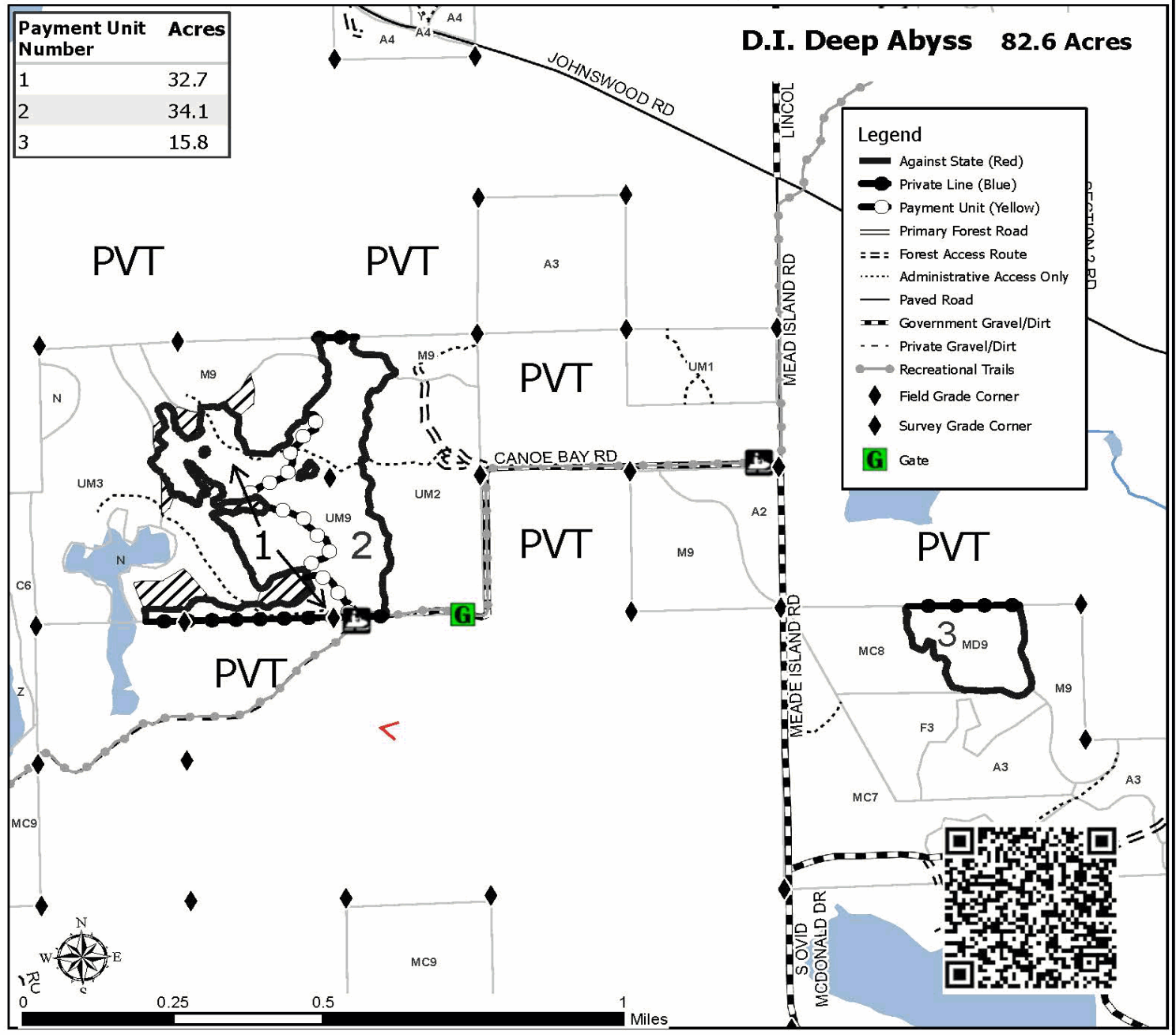
Cover Type

A = Aspen	J = Jack Pine	O = Oak	U = Upland Brush
B = Paper Birch	K = Rock	P = Lowland Poplar	UM = Upland Mix Forest
C = Cedar	L = Lowland Brush	Q = Mixed Swamp Conifer	V = Bog or Marsh
D = Treed Bog	LM = Lowland Mix Forest	R = Red Pine	W = White Pine
E = Swamp Hardwoods	M = Maple, Beech, Birch	S = Black Spruce	X = Non Stocked
F = Spruce/Fir	MC = Mixed Conifer	T = Tamarack	Y = Sand
G = Grass	MD = Mixed Deciduous	Z = Water	
H = Hemlock	N = Marsh		

Density

0 = Non Stocked	5 = Pole Timber Medium
1 = Seedling Sapling Poor	6 = Pole Timber Well
2 = Seedling Sapling Medium	7 = Saw Timber Poor
3 = Seedling Sapling Well	8 = Saw Timber Medium
4 = Pole Timber Poor	9 = Saw Timber Well

Payment Unit Number	Acres
1	32.7
2	34.1
3	15.8

D.I. Deep Abyss 82.6 Acres



**DEPARTMENT OF NATURAL RESOURCES
STATE OF MICHIGAN
TIMBER SALE PROSPECTUS #7754**

SCHEDULED SALE DATE AND TIME: 10:00 a.m. (local time) on December 15, 2025.

LOCATION: SAULT DNR CUSTOMER SERVICE CENTER, 4131 S. M-129, SAULT STE MARIE, MI 49783.

CONTACT NAME: Josh Brinks

PHONE NUMBER: (906) 203-0210

PROSPECTUS NOTE: The bidder is advised to inspect the sale area and review the location, estimated volumes, operating costs and contract terms of proposed sales. Please be aware that some landowners may request 60 days or more notice for access across their land.

Notice is hereby given that bids will be received by the Unit Manager, SAULT STE MARIE MANAGEMENT UNIT, for certain timber on the following described lands:

DI Distant Cuts (45-012-25) / T41N, R06E, SEC. 17, NENW,S1/2NW,N1/2SW.

T41N, R06E, SEC. 5 , SESW.

T41N, R06E, SEC. 7 , NENW,S1/2NW,W1/2NE,SW.

T41N, R06E, SEC. 8 , N1/2NW,SENE,NWNE,S1/2NE.

T41N, R06E, SEC. 8 , N1/2SE,SESE.

T41N, R06E, SEC. 9 , S1/2NW,SW.

Chippewa County, Advertised Price \$66,437.30, 352.6 Acres, Aspen, N White Cedar.

SALE NOTE: This sale will require access from private lands for Payment Units 1-5.

Payment Units 10 & 11 will be amended for a small (18.56 cord) reduction in cedar volume due to a need for strategic reserve trees.

A recreation site such as a trail, pathway, or campground is within the sale area or the vicinity. Certain restrictions/specifications may be applicable including time restrictions. Access may be through private land.

TIMBER SALE INFORMATION

DI Distant Cuts (45-012-25)

T41N, R06E, SEC. 17; T41N, R06E, SEC. 5; T41N, R06E, SEC. 7; T41N, R06E, SEC. 8; T41N, R06E, SEC. 9.
Chippewa County (Advertised Price \$66,437.30)

SALE NOTE: This sale will require access from private lands for Payment Units 1-5.

Payment Units 10 & 11 will be amended for a small (18.56 cord) reduction in cedar volume due to a need for strategic reserve trees.

A recreation site such as a trail, pathway, or campground is within the sale area or the vicinity. Certain restrictions/specifications may be applicable including time restrictions. Access may be through private land.

A timber sale contract for this lump sum, sealed bid timber sale will be awarded to the responsible bidder offering the highest sealed bid price. All units of volume listed below were estimated using the Inventory Manager computer program and the new Michigan taper model. Bids must be at or above the following advertised price for each product and species:

<u>PRODUCTS & SPECIES</u>	<u>ESTIMATED UNITS*</u>	<u>ADVERTISED PRICE</u>
Pulpwood		
Balsam Fir	721 Cords	\$ 6.60 / Cord
Balsam Poplar	72 Cords	\$ 7.10 / Cord
Mixed Aspen	2,761 Cords	\$ 8.50 / Cord
Mixed Hardwood	46 Cords	\$ 7.50 / Cord
N. White Cedar	1,320 Cords	\$ 2.55 / Cord
Paper Birch	375 Cords	\$ 5.80 / Cord
Red Pine	494 Cords	\$ 55.50 / Cord
Tamarack	28 Cords	\$ 2.90 / Cord
White Pine	140 Cords	\$ 13.00 / Cord
White Spruce	378 Cords	\$ 6.60 / Cord

* The total volume is statistically estimated within plus (+) or minus (-) 7.76 percent. There are an estimated 6,332 cords on this timber sale, plus or minus 492 cords at the 95% confidence level. The estimated units are final and not subject to adjustment. Prospective bidders are urged to examine this timber and to make their own estimates of quantity and quality.

BOND AND PAYMENT SCHEDULE:

1. A bond in the amount of \$5,314.98 to insure faithful performance of the conditions of the contract will be deposited by the successful bidder within 21 days of the sale award.
2. Cutting in any sale or unit without the required advance payment would be considered a trespass.
3. Total payment must be paid in advance or according to the following schedule:
 - (a) Ten percent (10%) of the sale value must be paid within 21 days of the sale award.
 - (b) The 10% down payment will be credited towards the first unit cut.
 - (c) Payment for each of the following units must be made before cutting begins in that unit:

<u>PAYMENT UNIT NUMBER</u>	<u>PERCENT OF TOTAL SALE VALUE</u>
01	10.2%
02	8.7%
03	11.5%
04	4.7%
05	28.1%
06	5.0%
07	6.7%
08	7.2%
09	3.9%
10	8.9%
11	2.9%
12	2.2%

4. If no cutting takes place, the 10% down payment will not be refunded.
5. Operations on the contract issued will terminate on 06/30/2030.

SALE STATISTICS

Volumes were calculated in cubic feet using the Michigan taper model. Cubic foot volume includes all wood inside bark for the product indicated. For display purposes, cubic feet were converted to cords and MBF using a simple conversion factor, e.g. 79 cubic feet per cord and 185 cubic feet per MBF. The cubic foot volumes are precise; the cords and MBF volumes are not. Cubic foot volume cannot be directly converted to cords or boards with precision.

SALE VOLUMES

The total estimated sale volume may not equal the sum of the species/products due to the nature of statistical calculations associated with double sampling methodology.

VOLUME			STATISTICAL RANGE IN CORDS	
TOTAL CUBIC FEET	TOTAL CORDS	PERCENT ERROR	MINIMUM	MAXIMUM
500,219	6,332	7.76%	5,840	6,824

VDU VOLUMES

A VDU is a Volume Determination Unit. Volumes and their associated statistics are calculated at the VDU level and summarized to the sale level. There is often a one to one relationship between a VDU and a Payment Unit, but not always, depending on the cruise design. Refer to the VDU TO PAYMENT UNIT table.

	VOLUME			RANGE IN CORDS	
VDU	TOTAL CUBIC FEET	TOTAL CORDS	PERCENT ERROR	MINIMUM	MAXIMUM
27	52,888	669	17.50%	552	787
31	45,787	580	30.53%	403	757
36	142,802	1,808	13.06%	1,571	2,044
39	14,341	182	46.01%	98	265
46	141,348	1,789	16.60%	1,492	2,086
58	103,054	1,304	17.07%	1,082	1,527
TOTAL:	500,219	6,332		5,198	7,465

VDU TO PAYMENT UNIT

When a VDU is associated with more than one Payment Unit (PU), the VDU volumes are assigned to the PU based on acres of the VDU within the PU.

VDU	VDU ACRES	PU	PU ACRES
TOTAL:			

DESCRIPTION OF TIMBER BY PU (PU)

PU	MARKET GROUP	PRODUCT	QUANTITY	UNIT	ACRES	ADVERTISE PRICE
1	Balsam Fir	Pulpwood	103	Cords	51.6	\$6,806.70
	Mixed Aspen		236	Cords		
	<i>B. T. Aspen</i>		1	<i>Cords</i>		
	<i>Quaking Aspen</i>		235	<i>Cords</i>		
	Mixed Hardwood		1	Cords		
	<i>Red Maple</i>		1	<i>Cords</i>		
	Paper Birch		56	Cords		
	Red Pine		61	Cords		
	Tamarack		7	Cords		
	White Spruce		58	Cords		
2	Balsam Fir	Pulpwood	87	Cords	43.5	\$5,772.60
	Mixed Aspen		199	Cords		
	<i>B. T. Aspen</i>		1	<i>Cords</i>		
	<i>Quaking Aspen</i>		198	<i>Cords</i>		
	Mixed Hardwood		1	Cords		
	<i>Red Maple</i>		1	<i>Cords</i>		
	Paper Birch		47	Cords		
	Red Pine		52	Cords		
	Tamarack		6	Cords		
	White Spruce		49	Cords		
3	Balsam Fir	Pulpwood	117	Cords	57.8	\$7,634.20
	Mixed Aspen		265	Cords		
	<i>B. T. Aspen</i>		2	<i>Cords</i>		
	<i>Quaking Aspen</i>		263	<i>Cords</i>		
	Mixed Hardwood		2	Cords		
	<i>Red Maple</i>		2	<i>Cords</i>		
	Paper Birch		63	Cords		
	Red Pine		68	Cords		
	Tamarack		9	Cords		
	White Spruce		65	Cords		
4	Balsam Fir	Pulpwood	47	Cords	23.6	\$3,115.00
	Mixed Aspen		108	Cords		
	<i>B. T. Aspen</i>		1	<i>Cords</i>		
	<i>Quaking Aspen</i>		107	<i>Cords</i>		
	Mixed Hardwood		1	Cords		
	<i>Red Maple</i>		1	<i>Cords</i>		
	Paper Birch		25	Cords		
	Red Pine		28	Cords		
	Tamarack		3	Cords		
	White Spruce		26	Cords		
5	Balsam Fir	Pulpwood	34	Cords	27.0	\$18,748.70
	Mixed Aspen		68	Cords		
	<i>B. T. Aspen</i>		3	<i>Cords</i>		
	<i>Quaking Aspen</i>		65	<i>Cords</i>		
	Paper Birch		43	Cords		
	Red Pine		285	Cords		
	White Pine		140	Cords		
	White Spruce		9	Cords		
6	Balsam Fir	Pulpwood	41	Cords	23.3	\$3,299.40
	Mixed Aspen		208	Cords		
	<i>B. T. Aspen</i>		4	<i>Cords</i>		
	<i>Quaking Aspen</i>		204	<i>Cords</i>		
	N. White Cedar		366	Cords		
	Paper Birch		14	Cords		
	Tamarack		3	Cords		

DESCRIPTION OF TIMBER BY PU (PU), CON'T

PU	MARKET GROUP	PRODUCT	QUANTITY	UNIT	ACRES	ADVERTISE PRICE
6 con't	White Spruce	Pulpwood	36	Cords		
7	Balsam Fir	Pulpwood	69	Cords	23.3	\$4,446.05
	Balsam Poplar		21	Cords		
	Mixed Aspen		357	Cords		
	<i>B. T. Aspen</i>		3	Cords		
	<i>Quaking Aspen</i>		354	Cords		
	Mixed Hardwood		15	Cords		
	<i>Striped Maple</i>		1	Cords		
	<i>Sugar Maple</i>		14	Cords		
	N. White Cedar		181	Cords		
	Paper Birch		14	Cords		
	White Spruce		23	Cords		
8	Balsam Fir	Pulpwood	74	Cords	25.0	\$4,772.90
	Balsam Poplar		23	Cords		
	Mixed Aspen		382	Cords		
	<i>B. T. Aspen</i>		3	Cords		
	<i>Quaking Aspen</i>		379	Cords		
	Mixed Hardwood		17	Cords		
	<i>Striped Maple</i>		1	Cords		
	<i>Sugar Maple</i>		16	Cords		
	N. White Cedar		194	Cords		
	Paper Birch		15	Cords		
	White Spruce		25	Cords		
9	Balsam Fir	Pulpwood	40	Cords	13.7	\$2,613.85
	Balsam Poplar		13	Cords		
	Mixed Aspen		210	Cords		
	<i>B. T. Aspen</i>		2	Cords		
	<i>Quaking Aspen</i>		208	Cords		
	Mixed Hardwood		9	Cords		
	<i>Striped Maple</i>		1	Cords		
	<i>Sugar Maple</i>		8	Cords		
	N. White Cedar		107	Cords		
	Paper Birch		8	Cords		
	White Spruce		13	Cords		
10	Balsam Fir	Pulpwood	70	Cords	43.4	\$5,885.00
	Balsam Poplar		11	Cords		
	Mixed Aspen		451	Cords		
	<i>B. T. Aspen</i>		3	Cords		
	<i>Quaking Aspen</i>		448	Cords		
	N. White Cedar		356	Cords		
	Paper Birch		54	Cords		
	White Spruce		44	Cords		
11	Balsam Fir	Pulpwood	23	Cords	14.1	\$1,908.00
	Balsam Poplar		4	Cords		
	Mixed Aspen		146	Cords		
	<i>B. T. Aspen</i>		1	Cords		
	<i>Quaking Aspen</i>		145	Cords		
	N. White Cedar		116	Cords		
	Paper Birch		17	Cords		
	White Spruce		14	Cords		
12	Balsam Fir	Pulpwood	16	Cords	6.3	\$1,434.90
	Mixed Aspen		131	Cords		
	<i>Quaking Aspen</i>		131	Cords		
	Paper Birch		19	Cords		
	White Spruce		16	Cords		

TOTAL:	6,335	Cords
--------	-------	-------

Sale Specific Conditions & Requirements

Sale Name: DI Distant Cuts

Sale Number: 45-012-25 Seq#: 1

1 - Sale Area

1.2 - Boundaries

1.2.1 - Painted Boundaries (9/19)

The sale boundary and Payment Unit boundaries are marked and identified by blue, red and yellow paint or are unmarked and identified by a road. Exterior sale boundary lines against private property are marked with blue paint. Exterior sale boundary lines against state are marked with red paint, with the exception of the western boundaries of Payment Units 7 and 8. Interior Payment Unit boundaries are marked with yellow paint, with the exception of the boundary between Payment Units 1, 2 and 3. Retention patches are marked with red paint; no harvesting activities may occur within these areas. The painted boundary line trees are not Included Timber and are to be protected. Yellow painted trees designating an interior Payment Unit boundary are only to be cut when all surrounding Payment Units have been paid.

2 - Timber Specifications

2.1 - Included Timber

2.1.1 - Clearcut Unit(s) with Unmerchantable Trees (6/14)

Within Payment Unit(s) 1-4, 6-9, and 12, cut all trees that are two (2) inches or more at DBH, except do not cut oak, hemlock, or yellow birch. In addition, the following specifications apply:

- Within Payment Units 1-4, do not cut red pine over 18" at DBH, or any cedar or white pine.
- Within Payment Units 6-9, do not cut any pine.
- Within Payment Unit 12, do not cut any pine or cedar.

2.1.7 - Leave Tree Marked Unit(s) (6/14)

Within Payment Unit(s) 5, 10 and 11, cut all trees that are two (2) inches or more at DBH, except do not cut any tree marked with green paint above and below stump height. In addition, the following specifications apply:

- Within Payment Unit 5 do not cut pine less than 4" at DBH, or any cedar, oak, hemlock, or yellow birch.
- Within Payment Units 10 and 11, do not cut oak, hemlock, yellow birch, or any pine.

2.1.9 - Harvest Exception (12/24)

Do not cut any cedar trees in Payment Units 1-5 & 12 other than those that are necessary to remove in order to operate within the Sale Area. Every effort must be made to preserve the existing cedar and to leave an intact stand upon sale completion. All cut cedar shall be piled separately by product and scaled in the woods, unless other scaling arrangements are agreed to by the Unit Manager or his/her representative. Stumpage price for cedar shall be \$20.00 per cord.

2.2 - Utilization

2.2.3 - Stump Heights (12/24)

Stump heights within the Sale Area shall not exceed 24 inches for trees greater than 10 inches at DBH or multi-stemmed trees, and 12 inches for trees smaller than 10 inches at DBH.

4 - Transportation

4.1 - Construction

4.1.3 - Slash and Earthen Piles (8/04)

Piles or windrows of earth along roads and landings that have been widened or constructed shall be leveled. Slash from road maintenance or construction, including stumps, shall be dispersed throughout the sale.

4.1.6 - Road Construction (4/24)

Construction of new roads or improvements of existing roads shall be done in such a way as to minimize the environmental and visual impacts. Merchantable trees shall be cut and utilized unless otherwise directed. Non-merchantable trees shall be severed and laid flat on the ground. Slash shall be scattered, not left in windrows, and kept a minimum of 10 feet back from the road edge. Stumps shall be set upright, not left on edge, and be moved at least 10 feet away from the road edge. Disturbed soil shall be feathered into the woods and not left in berms or windrows.

4.1.7 - Road Closure (10/11)

All new roads built into the sale must be blocked to vehicle traffic upon completion of the sale. Overgrown roads that are reopened shall be considered new roads. In general, this will require constructing double earthen berms at strategic locations. Stumps and brush must be placed along the remainder of the trail. These roads must be rendered impassable to cars and trucks. Contact the Sale Administrator for specific details of design and placement.

4.4 - Access

4.4.1 - Private property access (3/11)

Permission for access across private land is the responsibility of the Purchaser. Should the Purchaser desire to cross private land, a copy of the written permission from the private landowner may be required by the DNR.

5 - Operations

5.2 - Conduct of Operations

5.2.1 - Slash

5.2.1.8 - Slash Height (12/08)

No slash or tree tops may exceed 24 inches in height.

5.2.2 - Hazard Trees/Snags

5.2.2.1 - Den Trees (10/16)

Obvious hollow and/or den trees shall be protected and left standing unless they are a safety hazard.

5.2.3 - Operating Restrictions

5.2.3.1 - Operating Restrictions (9/11)

Within Payment Unit(s) 1-5, unless changed by written agreement, cutting, skidding, and hauling are limited to the period of December 1 to March 31. This restriction is to provide a food resource to wintering deer.

5.2.4 - Dead and Down Creation

5.2.4.6 - Dead and Down Creation, Other (9/09)

To create hare habitat, along the west edge of Payment Unit 1, and the east edge of Payment Units 7 & 8, leave slash in piles measuring 6' tall and 12' in diameter along the edge of the Payment Units. Leave one pile every 200 feet.

5.2.22 - Operating Caution

5.2.22.1 - Operating Caution (6/11)

It is recommended, but not required, that within Payment Unit(s) 6-12, cutting, skidding, and hauling occur during the period between December 1 and March 31. The reason for the recommendation is to provide food resources to wintering deer.

5.2.32 - Decking/Landing Restoration (9/13)

All decking and landing areas must have the surface area restored to a condition equal to or better than before. This is to ensure the proper regeneration of the stand. Wood debris, chips and "cookies" from trimmings must be removed or scattered away from landing and loading areas and may not be windrowed on the edge.

5.2.38 - No Decking Against Live Trees (2/04)

Cut products may not be decked against unmarked or designated leave trees.

5.2.41 - Snowmobile Trail Protection (9/11)

S. Warners Cove Rd. is a designated snowmobile trail and is shown on the Timber Sale Map. Do not cut or damage posts with orange trail markers or traffic control signs. If the trail is used, it must be maintained and restored to a condition equal to or better than before the sale. The road maintenance/restoration must be done prior to December 1. If the trail road is to be used for hauling during the snowmobile season, then a snow-covered base must be left on the trail. Maintain a 20-foot-wide slash, debris, and rut free zone daily using the snowmobile trail as the centerline. No decking of forest products will be permitted along the snowmobile trail. All stumps within 5 feet of the snowmobile trail must be cut at ground level.

5.8 - Protection of Endangered Species

5.8.5 - Protection of Raptor Nests (3/13)

All trees with raptor nests will be protected if found during harvesting operations. Notification will be made to the Unit Manager or his/her representative who will notify the Wildlife Biologist so an onsite evaluation and recommendation can be made, if necessary.

6 - Safety and Fire Prevention

6.2 - Signing

6.2.1 - Road Posting (10/20)

The Purchaser is responsible for posting and maintaining caution signs on S. Warners Cove Rd. prior to beginning operations. The road must be posted at appropriate distances from the Sale Area to warn of logging activity and truck traffic. Signs must be removed when harvest operations are suspended or completed. The Purchaser will provide these signs.

TIMBER SALE MAP

This information provided by authority of Part 525, 1994 PA 451, as amended.

Sale Number

45-012-25

Date

11/07/2025

Forest Management Unit

County

Mapped By: Louis Radecki

Scale

Page

Of

Sault Ste Marie Mgt Unit

Chippewa

Cruised By: Louis Radecki

1:31,680**1****3**

Township

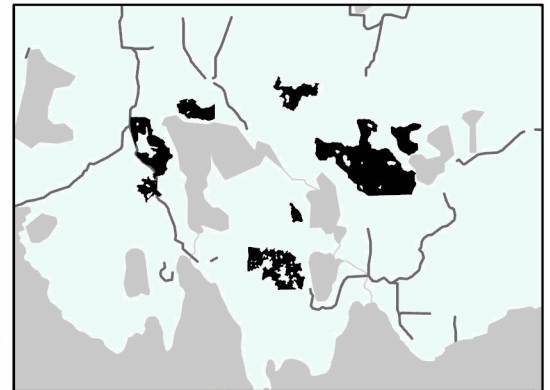
Range

Section(s) and Subdivision(s) N1/2NW,SENW,NWNE,S1/2NE; Sec. 8 N1/2SE,SESE; Sec. 9 S1/2NW,SW;
41N 06E Sec. 17 NENW,S1/2NW,N1/2SW; Sec. 5 SESW; Sec. 7 NENW,S1/2NW,W1/2NE,SW; Sec. 8**Cover Type**

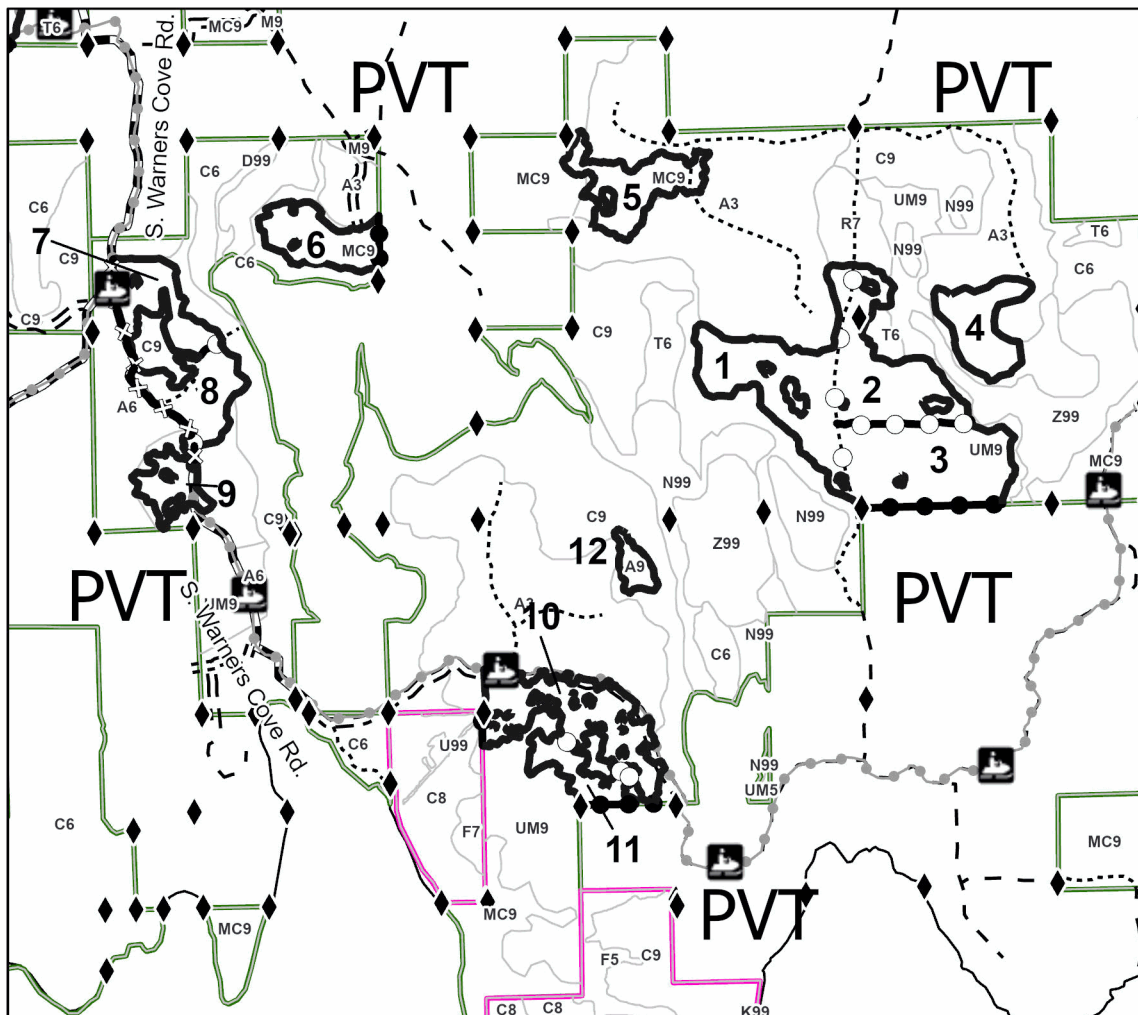
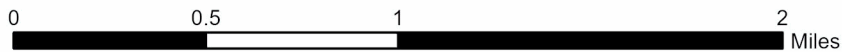
A = Aspen	J = Jack Pine	O = Oak	U = Upland Brush
B = Paper Birch	K = Rock	P = Lowland Poplar	UM = Upland Mix Forest
C = Cedar	L = Lowland Brush	Q = Mixed Swamp Conifer	V = Bog or Marsh
D = Treed Bog	LM = Lowland Mix Forest	R = Red Pine	W = White Pine
E = Swamp Hardwoods	M = Maple, Beech, Birch	S = Black Spruce	X = Non Stocked
F = Spruce/Fir	MC = Mixed Conifer	T = Tamarack	Y = Sand
G = Grass	MD = Mixed Deciduous		Z = Water
H = Hemlock	N = Marsh		

Density

0 = Non Stocked	5 = Pole Timber Medium
1 = Seedling Sapling Poor	6 = Pole Timber Well
2 = Seedling Sapling Medium	7 = Saw Timber Poor
3 = Seedling Sapling Well	8 = Saw Timber Medium
4 = Pole Timber Poor	9 = Saw Timber Well

Locator Map 1:100,000**DI Distant Cuts****352.6 Acres**

Payment Unit Number	Acres	Payment Unit Number	Acres
1	51.6	7	23.3
2	43.5	8	25
3	57.8	9	13.7
4	23.6	10	43.4
5	27	11	14.1
6	23.3	12	6.3

**Legend**

- Against State (Red)
- Against State (Unpainted)
- Private Line (Blue)
- Payment Unit (Yellow)
- Payment Unit (Road)
- == Forest Access Route
- ... Administrative Access Only
- Government Gravel/Dirt
- Private Gravel/Dirt
- Recreational Trails
- ◆ Field Grade Corner
- ◆ Survey Grade Corner



TIMBER SALE MAP

This information provided by authority of Part 525, 1994 PA 451, as amended.

Sale Number

45-012-25

Date

09/18/2025

Forest Management Unit

Sault Ste Marie Mgt Unit

County

Chippewa

Mapped By:

Cruised By:

Scale

1:20,000

Page

2

Of

3

Township

41N

Range

06E

Section(s) and

Subdivision(s)

N1/2NW,SENW,NWNE,S1/2NE; Sec. 8 N1/2SE,SESE; Sec. 9 S1/2NW,SW;
Sec. 17 NENW,S1/2NW,N1/2SW; Sec. 5 SESW; Sec. 7 NENW,S1/2NW,W1/2NE,SW; Sec. 8**Cover Type**

A = Aspen	J = Jack Pine	O = Oak	U = Upland Brush
B = Paper Birch	K = Rock	P = Lowland Poplar	UM = Upland Mix Forest
C = Cedar	L = Lowland Brush	Q = Mixed Swamp Conifer	V = Bog or Marsh
D = Treed Bog	LM = Lowland Mix Forest	R = Red Pine	W = White Pine
E = Swamp Hardwoods	M = Maple, Beech, Birch	S = Black Spruce	X = Non Stocked
F = Spruce/Fir	MC = Mixed Conifer	T = Tamarack	Y = Sand
G = Grass	MD = Mixed Deciduous		Z = Water
H = Hemlock	N = Marsh		

Density

0 = Non Stocked	5 = Pole Timber Medium
1 = Seedling Sapling Poor	6 = Pole Timber Well
2 = Seedling Sapling Medium	7 = Saw Timber Poor
3 = Seedling Sapling Well	8 = Saw Timber Medium
4 = Pole Timber Poor	9 = Saw Timber Well

Payment Unit Number	Acres	Payment Unit Number	Acres
1	51.6	7	23.3
2	43.5	8	25
3	57.8	9	13.7
4	23.6	10	43.4
5	27	11	14.1
6	23.3	12	6.3

DI Distant Cuts 352.6 Acres**Legend**

- Against State (Red)
- Private Line (Blue)
- Payment Unit (Yellow)
- Payment Unit (Road)
- - - Forest Access Route
- Administrative Access Only
- Paved Road
- - - Private Gravel/Dirt
- Recreational Trails
- ◆ Field Grade Corner
- ◆ Survey Grade Corner

