



**DEPARTMENT OF NATURAL RESOURCES
STATE OF MICHIGAN
TIMBER SALE PROSPECTUS #7790**

SCHEDULED SALE DATE AND TIME: 2:00 p.m. (local time) on March 11, 2026.

LOCATION: SHINGLETON MGMT UNIT, PO BOX 67, M 28 WEST, SHINGLETON, MI 49884.

CONTACT NAME: Robert Burnham

PHONE NUMBER: (906) 420-1645

PROSPECTUS NOTE: The bidder is advised to inspect the sale area and review the location, estimated volumes, operating costs and contract terms of proposed sales. Please be aware that some landowners may request 60 days or more notice for access across their land.

Notice is hereby given that bids will be received by the Unit Manager, SHINGLETON MANAGEMENT UNIT, for certain timber on the following described lands:

Red Eye Red Pine (41-014-25) / T47N, R13W, SEC. 13, SENW,S1/2NE,SW,N1/2SE,SESE.

T47N, R13W, SEC. 14, S1/2NW,S1/2NE,SW,SE.

T47N, R13W, SEC. 15, E1/2SE.

Schoolcraft County, Advertised Price \$298,336.70, 610.3 Acres, Red Pine, White Pine.

SALE NOTE: Road work is required on this sale. See Sale Spec 4.1.8 for details.

The Danaher Pains ORV Trail is shown on the Timber Sale Map. See Sale Spec 5.2.39 for restrictions.

Snowmobile Trail 443b is shown on the Timber Sale Map. See Sale Spec 5.2.41 for specific information.

A recreation site such as a trail, pathway, or campground is within the sale area or the vicinity. Certain restrictions/specifications may be applicable including time restrictions.

TIMBER SALE INFORMATION

Red Eye Red Pine (41-014-25)

T47N, R13W, SEC. 13; T47N, R13W, SEC. 14; T47N, R13W, SEC. 15.
Schoolcraft County (Advertised Price \$298,336.70)

SALE NOTE: Road work is required on this sale. See Sale Spec 4.1.8 for details.

The Danaher Pains ORV Trail is shown on the Timber Sale Map. See Sale Spec 5.2.39 for restrictions.

Snowmobile Trail 443b is shown on the Timber Sale Map. See Sale Spec 5.2.41 for specific information.

A recreation site such as a trail, pathway, or campground is within the sale area or the vicinity. Certain restrictions/specifications may be applicable including time restrictions.

A timber sale contract for this lump sum, sealed bid timber sale will be awarded to the responsible bidder offering the highest sealed bid price. All units of volume listed below were estimated using the Inventory Manager computer program and the new Michigan taper model. Bids must be at or above the following advertised price for each product and species:

<u>PRODUCTS & SPECIES</u>	<u>ESTIMATED UNITS*</u>	<u>ADVERTISED PRICE</u>
Pulpwood		
Jack Pine	25 Cords	\$ 34.70 / Cord
Quaking Aspen	9 Cords	\$ 30.20 / Cord
Red Maple	6 Cords	\$ 22.00 / Cord
Red Pine	3,926 Cords	\$ 75.45 / Cord
White Pine	46 Cords	\$ 18.45 / Cord

* The total volume is statistically estimated within plus (+) or minus (-) 11.65 percent. There are an estimated 4,012 cords on this timber sale, plus or minus 468 cords at the 95% confidence level. The estimated units are final and not subject to adjustment. Prospective bidders are urged to examine this timber and to make their own estimates of quantity and quality.

BOND AND PAYMENT SCHEDULE:

1. A bond in the amount of \$14,916.84 to insure faithful performance of the conditions of the contract will be deposited by the successful bidder within 21 days of the sale award.
2. Cutting in any sale or unit without the required advance payment would be considered a trespass.
3. Total payment must be paid in advance or according to the following schedule:
 - (a) Ten percent (10%) of the sale value must be paid within 21 days of the sale award.
 - (b) The 10% down payment will be credited towards the first unit cut.
 - (c) Payment for each of the following units must be made before cutting begins in that unit:

<u>PAYMENT UNIT NUMBER</u>	<u>PERCENT OF TOTAL SALE VALUE</u>
01	4.8%
02	2.7%
03	5.2%
04	6.4%
05	5.5%
06	5.6%
07	6.4%
08	8.1%
09	0.1%
10	10.2%
11	7.6%
12	5.6%
13	8.1%
14	8.2%
15	10.3%
16	5.2%

4. If no cutting takes place, the 10% down payment will not be refunded.
5. Operations on the contract issued will terminate on 06/30/2029.

SALE STATISTICS

Volumes were calculated in cubic feet using the Michigan taper model. Cubic foot volume includes all wood inside bark for the product indicated. For display purposes, cubic feet were converted to cords and MBF using a simple conversion factor, e.g. 79 cubic feet per cord and 185 cubic feet per MBF. The cubic foot volumes are precise; the cords and MBF volumes are not. Cubic foot volume cannot be directly converted to cords or boards with precision.

SALE VOLUMES

The total estimated sale volume may not equal the sum of the species/products due to the nature of statistical calculations associated with double sampling methodology.

VOLUME			STATISTICAL RANGE IN CORDS	
TOTAL CUBIC FEET	TOTAL CORDS	PERCENT ERROR	MINIMUM	MAXIMUM
316,981	4,012	11.65%	3,545	4,480

VDU VOLUMES

A VDU is a Volume Determination Unit. Volumes and their associated statistics are calculated at the VDU level and summarized to the sale level. There is often a one to one relationship between a VDU and a Payment Unit, but not always, depending on the cruise design. Refer to the VDU TO PAYMENT UNIT table.

	VOLUME			RANGE IN CORDS	
VDU	TOTAL CUBIC FEET	TOTAL CORDS	PERCENT ERROR	MINIMUM	MAXIMUM
4	132,687	1,680	17.85%	1,380	1,979
101	698	9	226.22%	0	29
103	183,596	2,324	15.56%	1,962	2,686
TOTAL:	316,981	4,012		3,342	4,694

VDU TO PAYMENT UNIT

When a VDU is associated with more than one Payment Unit (PU), the VDU volumes are assigned to the PU based on acres of the VDU within the PU.

VDU	VDU ACRES	PU	PU ACRES
TOTAL:			

DESCRIPTION OF TIMBER BY PU (PU)

PU	MARKET GROUP	PRODUCT	QUANTITY	UNIT	ACRES	ADVERTISE PRICE
1	Red Pine White Pine	Pulpwood	188 4	Cords Cords	22.9	\$14,258.40
2	Jack Pine Red Pine	Pulpwood	2 107	Cords Cords	15.0	\$8,142.55
3	Jack Pine Red Maple Red Pine	Pulpwood	3 1 203	Cords Cords Cords	28.5	\$15,442.45
4	Jack Pine Red Maple Red Pine	Pulpwood	4 1 249	Cords Cords Cords	35.0	\$18,947.85
5	Jack Pine Red Maple Red Pine	Pulpwood	3 1 215	Cords Cords Cords	30.2	\$16,347.85
6	Jack Pine Red Maple Red Pine	Pulpwood	3 1 221	Cords Cords Cords	31.1	\$16,800.55
7	Jack Pine Red Maple Red Pine	Pulpwood	4 1 252	Cords Cords Cords	35.5	\$19,174.20
8	Red Pine White Pine	Pulpwood	317 6	Cords Cords	38.7	\$24,028.35
9	Quaking Aspen	Pulpwood	9	Cords	100.3	\$271.80
10	Jack Pine Red Maple Red Pine	Pulpwood	6 1 402	Cords Cords Cords	56.5	\$30,561.10
11	Red Pine White Pine	Pulpwood	301 6	Cords Cords	36.7	\$22,821.15
12	Red Pine White Pine	Pulpwood	222 4	Cords Cords	27.1	\$16,823.70
13	Red Pine White Pine	Pulpwood	319 6	Cords Cords	39.0	\$24,179.25
14	Red Pine White Pine	Pulpwood	321 6	Cords Cords	39.2	\$24,330.15
15	Red Pine White Pine	Pulpwood	404 10	Cords Cords	49.6	\$30,666.30
16	Red Pine White Pine	Pulpwood	205 4	Cords Cords	25.0	\$15,541.05
TOTAL:			4,012	Cords		

Sale Specific Conditions & Requirements

Sale Name: Red Eye Red Pine

Sale Number: 41-014-25 Seq#: 1

1 - Sale Area

1.2 - Boundaries

1.2.1 - Painted Boundaries (9/19)

The sale boundary and Payment Unit boundaries are marked and identified by blue, red and yellow paint. Exterior sale boundary lines against private property are marked with blue paint. Exterior sale boundary lines against state are marked with red paint. Interior Payment Unit boundaries are marked with yellow paint. The painted boundary line trees are not Included Timber and are to be protected unless marked with orange paint.

2 - Timber Specifications

2.1 - Included Timber

2.1.1 - Clearcut Unit(s) with Unmerchantable Trees (6/14)

Within Payment Unit(s) 9, cut all trees that are two (2) inches or more at DBH.

2.1.3 - Cut Tree Marked Unit(s) (12/08)

Within Payment Unit(s) 1-8, 10-16, all trees are designated for cutting when marked with orange paint above and below stump height, regardless of merchantability.

2.2 - Utilization

2.2.3 - Stump Heights (12/24)

Stump heights within the Sale Area shall not exceed 12 inches for trees greater than 10 inches at DBH and four (4) inches for trees smaller than 10 inches at DBH. This is in order to facilitate future planting operations.

3 - Payments

3.3 - Pre-measured Sales

3.3.4 - Dividing Payment Units (7/14)

Payment Unit(s) that are \$20,000 or greater in value, may be divided at the request of the Purchaser and upon approval of the Unit Manager. Dividing Payment Units is a contract modification which requires a Timber Sale Contract Amendment.

4 - Transportation

4.1 - Construction

4.1.3 - Slash and Earthen Piles (8/04)

Piles or windrows of earth along roads and landings that have been widened or constructed shall be leveled. Slash from road maintenance or construction, including stumps, shall be dispersed throughout the sale.

4.1.6 - Road Construction (4/24)

Construction of new roads or improvements of existing roads shall be done in such a way as to minimize the environmental and visual impacts. Merchantable trees shall be cut and utilized unless otherwise directed. Non-merchantable trees shall be severed and laid flat on the ground. Slash shall be scattered, not left in windrows, and kept a minimum of 10 feet back from the road edge. Stumps shall be set upright, not left on edge, and be moved at least 10 feet away from the road edge. Disturbed soil shall be feathered into the woods and not left in berms or windrows.

4.1.7 - Road Closure (10/11)

All new roads built into the sale must be blocked to vehicle traffic upon completion of the sale. Overgrown roads that are reopened shall be considered new roads. In general, this will require constructing a four (4') foot high berm of stumps and logs covered with earth. Stumps and brush must be placed along the remainder of the trail. These roads must be rendered impassable to cars and trucks. All stumps from road building and landing construction must be reserved to block any newly constructed roads upon completion of the sale. These stumps must be scattered along the road system to prohibit vehicular

movement. Contact the Sale Administrator for specific details of design and placement.

4.1.8 - Road Work (1) (8/07)

The following road work is required: 400 cubic yards of 3-inch minus (breaker run gravel) must be purchased, hauled and spread on the Star Road. Exact location of road work will be determined at the pre-sale meeting. The roadwork must be complete before hauling begins.

4.1.10 - Oversight (12/08)

The Unit Manager, or his/her representative, must be present when the road improvement project is initiated.

4.2 - Maintenance

4.2.4 - Grading (10/16)

For completion of the sale, state forest roads must be graded. In general, this will require a road grader or bulldozer to shape up the roads after forest products have been hauled off site. This includes cleaning of drainage areas, grading, crowning and filling with gravel, if necessary. The grading equipment to be used must be approved by the Unit Manager or his/her representative.

5 - Operations

5.2 - Conduct of Operations

5.2.2 - Hazard Trees/Snags

5.2.2.1 - Den Trees (10/16)

Obvious hollow and/or den trees shall be protected and left standing unless they are a safety hazard.

5.2.3 - Operating Restrictions

5.2.3.6 - Bark Beetle Restriction (1/25)

In the event drought creates a high risk of pine bark beetle infestation, pine is not to be cut during the period March 1 through July 1, unless all portions of trees greater than two (2) inches in diameter are removed from the Sale Area, reduced to chips, or treated to the satisfaction of the Unit Manager or his/her representative, within 15 days of being severed from the stump. Pine log decks, pulpwood piles and treetops that are piled for chipping in the fall or winter within a 1/4 mile of susceptible sites must be removed before March 15. Residual slash must not be placed in piles or rows and must be spread over the site for quick drying. The Department of Natural Resources will exercise this specification if the risk of damage warrants.

5.2.32 - Decking/Landing Restoration (9/13)

All decking and landing areas must have the surface area restored to a condition equal to or better than before. This is to ensure the proper regeneration of the stand. Wood debris, chips and "cookies" from trimmings must be removed or scattered away from landing and loading areas and may not be windrowed on the edge.

5.2.38 - No Decking Against Live Trees (2/04)

Cut products may not be decked against unmarked or designated leave trees.

5.2.39 - ORV Trail/Route Protection (4/18)

The Danaher Pains ORV Trail is shown on the Timber Sale Map. Do not cut trees or damage posts with yellow ORV markers. All stumps within five (5) feet of the trail must be cut flush with the ground. Maintain a 20-foot-wide slash, debris, and rut free zone daily using the ORV trail or route as the centerline. Do not run equipment down the ORV trail or route.

5.2.41 - Snowmobile Trail Protection (9/11)

Snowmobile Trail 443b is shown on the Timber Sale Map. Do not cut or damage posts with orange trail markers or traffic control signs. If the trail is used for hauling, it must be graded to the satisfaction of the Unit Manager or his/her representative prior to December 1. The snowmobile trail may not be used for any timber sale operations from December 1 to March 31. All stumps within 20 feet of the snowmobile trail must be cut at ground level.

5.8 - Protection of Endangered Species

5.8.3 - Red-shouldered Hawk or Goshawk (1) (1/25)

In the event that an active red shoulder hawk or goshawk nest is found, the contract may be amended to protect the nest site

until the nest is determined to be inactive. The value of the trees in this excluded area will be refunded or credited to the Purchaser. The nest will be buffered with a five-chain radius (eight acre) protection area, centered on the nest tree, in which there will be no cutting or new roads constructed. Avoid human disturbance, including loading and skidding, in the protection area.

An additional zone of five chains (ten chains centered on the active nest tree) will be established in which there is no management activity from April 1 to July 30. Limit biomass harvesting and chipping operations within this ten-chain zone, retain the maximum one-third of residues per the Woody Biomass Harvesting Guidelines (Michigan DNR 2010). Nests determined to be inactive will be protected with a one-chain no-harvest buffer.

6 - Safety and Fire Prevention

6.2 - Signing

6.2.1 - Road Posting (10/20)

The Purchaser is responsible for posting and maintaining caution signs on Star Road prior to beginning operations. The road must be posted at appropriate distances from the Sale Area to warn of logging activity and truck traffic. Signs must be removed when harvest operations are suspended or completed. The Purchaser will provide these signs.

6.2.3 - Recreational Trail Posting (10/20)

The Purchaser is responsible for posting and maintaining caution signs on the Danaher Plains Trail prior to beginning operations. The trail must be posted at appropriate distances from the Sale Area to warn of logging activity and truck traffic at both ends of the trail. Signs must be removed when harvest operations are suspended or completed. The Purchaser will provide these signs.



TIMBER SALE MAP

This information provided by authority of Part 525, 1994 PA 451, as amended.

Sale Number
41-014-25

Date
09/18/2025

Forest Management Unit
Shingleton Mgt Unit

County
Schoolcraft

Mapped By: Anthony Ciaramitaro

Cruised By: Shingleton Unit Staff

Scale
1:20,180

Page
1

Of
1

Township 47N Range 13W Section(s) and Subdivision(s) Sec. 13 SENW,S1/2NE,SW,N1/2SE,SESE; Sec. 14 S1/2NW,S1/2NE,SW,SE; Sec. 15 E1/2SE;

Cover Type

A = Aspen	J = Jack Pine	O = Oak	U = Upland Brush
B = Paper Birch	K = Rock	P = Lowland Poplar	UM = Upland Mix Forest
C = Cedar	L = Lowland Brush	Q = Mixed Swamp Conifer	V = Bog or Marsh
D = Treed Bog	LM = Lowland Mix Forest	R = Red Pine	W = White Pine
E = Swamp Hardwoods	M = Maple, Beech, Birch	S = Black Spruce	X = Non Stocked
F = Spruce/Fir	MC = Mixed Conifer	T = Tamarack	Y = Sand
G = Grass	MD = Mixed Deciduous		Z = Water
H = Hemlock	N = Marsh		

Density

0 = Non Stocked	5 = Pole Timber Medium
1 = Seedling Sapling Poor	6 = Pole Timber Well
2 = Seedling Sapling Medium	7 = Saw Timber Poor
3 = Seedling Sapling Well	8 = Saw Timber Medium
4 = Pole Timber Poor	9 = Saw Timber Well

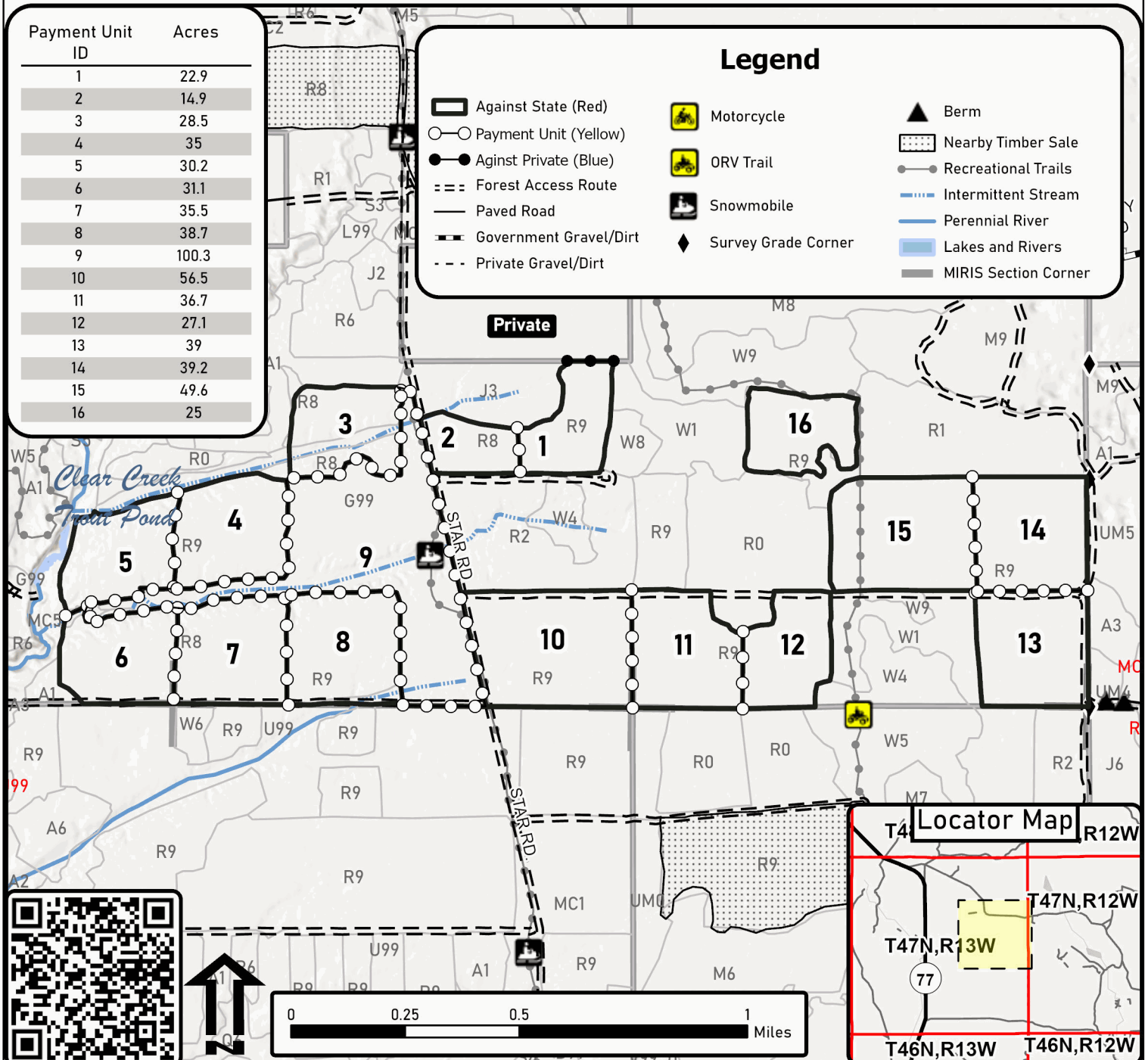
Red Eye Red Pine
610.3 Acres

Payment Unit ID Acres

1	22.9
2	14.9
3	28.5
4	35
5	30.2
6	31.1
7	35.5
8	38.7
9	100.3
10	56.5
11	36.7
12	27.1
13	39
14	39.2
15	49.6
16	25

Legend

- Against State (Red)
- Payment Unit (Yellow)
- Against Private (Blue)
- Forest Access Route
- Paved Road
- Government Gravel/Dirt
- Private Gravel/Dirt
- Motorcycle
- ORV Trail
- Snowmobile
- Survey Grade Corner
- Berm
- Nearby Timber Sale
- Recreational Trails
- Intermittent Stream
- Perennial River
- Lakes and Rivers
- MIRIS Section Corner



Locator Map

