



**DEPARTMENT OF NATURAL RESOURCES
STATE OF MICHIGAN
TIMBER SALE PROSPECTUS #7807**

SCHEDULED SALE DATE AND TIME: **2:00 p.m. (local time) on June 10, 2026.**

LOCATION: **SHINGLETON MGMT UNIT, PO BOX 67, M 28 WEST, SHINGLETON, MI 49884.**

CONTACT NAME: Robert Burnham

PHONE NUMBER: (906) 420-1645

PROSPECTUS NOTE: The bidder is advised to inspect the sale area and review the location, estimated volumes, operating costs and contract terms of proposed sales. Please be aware that some landowners may request 60 days or more notice for access across their land.

Notice is hereby given that bids will be received by the Unit Manager, SHINGLETON MANAGEMENT UNIT, for certain timber on the following described lands:

C-173 Contract (41-015-25) / T47N, R17W, SEC. 4 , S1/2NE,SW,SE.

T47N, R17W, SEC. 8 , E1/2NE.

T47N, R17W, SEC. 9 , NW,NE,N1/2SW,SESW,SE.

Alger County, Advertised Price \$310,466.75, 521.0 Acres, Hardwood, Sugar Maple.

SALE NOTE: Road work is required on this sale. See Sale Spec 4.1.8 for details.

The County must be contacted prior to crossing or harvesting in the County Road R-O-W. This applies to the Chapel Road.

Within Payment Unit(s) 1-10, harvesting is not permitted during the period of April 15 to July 15 because of bark slippage.

TIMBER SALE INFORMATION

C-173 Contract (41-015-25)

T47N, R17W, SEC. 4; T47N, R17W, SEC. 8; T47N, R17W, SEC. 9.
Alger County (Advertised Price \$310,466.75)

SALE NOTE: Road work is required on this sale. See Sale Spec 4.1.8 for details.

The County must be contacted prior to crossing or harvesting in the County Road R-O-W. This applies to the Chapel Road.

Within Payment Unit(s) 1-10, harvesting is not permitted during the period of April 15 to July 15 because of bark slippage.

A timber sale contract for this lump sum, sealed bid timber sale will be awarded to the responsible bidder offering the highest sealed bid price. All units of volume listed below were estimated using the Inventory Manager computer program and the new Michigan taper model. Bids must be at or above the following advertised price for each product and species:

<u>PRODUCTS & SPECIES</u>	<u>ESTIMATED UNITS*</u>	<u>ADVERTISED PRICE</u>
Sawtimber		
Basswood	165.9 MBF	\$ 65.00 / MBF
Black Cherry	8.8 MBF	\$ 82.00 / MBF
Paper Birch	1.4 MBF	\$ 22.00 / MBF
Red Maple	3.6 MBF	\$ 115.00 / MBF
Sugar Maple	540.1 MBF	\$ 336.00 / MBF
Pulpwood		
Balsam Fir	13 Cords	\$ 14.45 / Cord
Mixed Aspen	53 Cords	\$ 27.00 / Cord
Mixed Hardwood	5,096 Cords	\$ 22.65 / Cord

* The total volume is statistically estimated within plus (+) or minus (-) 9.66 percent. There are an estimated 6,849 cords on this timber sale, plus or minus 662 cords at the 95% confidence level. The estimated units are final and not subject to adjustment. Prospective bidders are urged to examine this timber and to make their own estimates of quantity and quality.

BOND AND PAYMENT SCHEDULE:

1. A bond in the amount of \$15,523.34 to insure faithful performance of the conditions of the contract will be deposited by the successful bidder within 21 days of the sale award.
2. Cutting in any sale or unit without the required advance payment would be considered a trespass.
3. Total payment must be paid in advance or according to the following schedule :
 - (a) Ten percent (10%) of the sale value must be paid within 21 days of the sale award.
 - (b) The 10% down payment will be credited towards the first unit cut.
 - (c) Payment for each of the following units must be made before cutting begins in that unit:

PAYMENT UNIT NUMBER	PERCENT OF TOTAL SALE VALUE
01	9.5%
02	5.3%
03	10.6%
04	13.7%
05	11.9%
06	8.8%
07	8.6%
08	13.3%
09	8.9%
10	9.4%

4. If no cutting takes place, the 10% down payment will not be refunded.
5. Operations on the contract issued will terminate on 12/31/2029.

SALE STATISTICS

Volumes were calculated in cubic feet using the Michigan taper model. Cubic foot volume includes all wood inside bark for the product indicated. For display purposes, cubic feet were converted to cords and MBF using a simple conversion factor, e.g. 79 cubic feet per cord and 185 cubic feet per MBF. The cubic foot volumes are precise; the cords and MBF volumes are not. Cubic foot volume cannot be directly converted to cords or boards with precision.

SALE VOLUMES

The total estimated sale volume may not equal the sum of the species/products due to the nature of statistical calculations associated with double sampling methodology.

VOLUME			STATISTICAL RANGE IN CORDS	
TOTAL CUBIC FEET	TOTAL CORDS	PERCENT ERROR	MINIMUM	MAXIMUM
541,091	6,849	9.66%	6,187	7,511

VDU VOLUMES

A VDU is a Volume Determination Unit. Volumes and their associated statistics are calculated at the VDU level and summarized to the sale level. There is often a one to one relationship between a VDU and a Payment Unit, but not always, depending on the cruise design. Refer to the VDU TO PAYMENT UNIT table.

	VOLUME			RANGE IN CORDS	
VDU	TOTAL CUBIC FEET	TOTAL CORDS	PERCENT ERROR	MINIMUM	MAXIMUM
1	541,091	6,849	9.67%	6,187	7,511
TOTAL:	541,091	6,849		6,187	7,511

VDU TO PAYMENT UNIT

When a VDU is associated with more than one Payment Unit (PU), the VDU volumes are assigned to the PU based on acres of the VDU within the PU.

VDU	VDU ACRES	PU	PU ACRES
TOTAL:			

DESCRIPTION OF TIMBER BY PU (PU)

PU	MARKET GROUP	PRODUCT	QUANTITY	UNIT	ACRES	ADVERTISE PRICE
1	Basswood	Sawtimber	15.7	MBF	49.3	\$29,381.80
	Black Cherry		0.8	MBF		
	Paper Birch		0.1	MBF		
	Red Maple		0.3	MBF		
	Sugar Maple		51.1	MBF		
	Balsam Fir	Pulpwood	1	Cords		
	Mixed Aspen		5	Cords		
	<i>Quaking Aspen</i>		5	Cords		
	Mixed Hardwood		483	Cords		
	<i>Basswood</i>		26	Cords		
	<i>Black Cherry</i>		10	Cords		
	<i>Ironwood</i>		1	Cords		
	<i>Paper Birch</i>		3	Cords		
	<i>Red Maple</i>		33	Cords		
	<i>Sugar Maple</i>		410	Cords		
2	Basswood	Sawtimber	8.8	MBF	27.5	\$16,402.50
	Black Cherry		0.5	MBF		
	Paper Birch		0.1	MBF		
	Red Maple		0.2	MBF		
	Sugar Maple		28.5	MBF		
	Balsam Fir	Pulpwood	1	Cords		
	Mixed Aspen		3	Cords		
	<i>Quaking Aspen</i>		3	Cords		
	Mixed Hardwood		269	Cords		
	<i>Basswood</i>		14	Cords		
	<i>Black Cherry</i>		6	Cords		
	<i>Paper Birch</i>		1	Cords		
	<i>Red Maple</i>		19	Cords		
	<i>Sugar Maple</i>		229	Cords		
	3		Basswood	Sawtimber		
Black Cherry		0.9	MBF			
Paper Birch		0.1	MBF			
Red Maple		0.4	MBF			
Sugar Maple		57.2	MBF			
Balsam Fir		Pulpwood	1	Cords		
Mixed Aspen			6	Cords		
<i>Quaking Aspen</i>			6	Cords		
Mixed Hardwood			540	Cords		
<i>Basswood</i>			29	Cords		
<i>Black Cherry</i>			11	Cords		
<i>Ironwood</i>			1	Cords		
<i>Paper Birch</i>			3	Cords		
<i>Red Maple</i>			37	Cords		
<i>Sugar Maple</i>			459	Cords		
4	Basswood	Sawtimber	22.7	MBF	71.4	\$42,593.00
	Black Cherry		1.2	MBF		
	Paper Birch		0.3	MBF		
	Red Maple		0.6	MBF		
	Sugar Maple		74.1	MBF		
	Balsam Fir	Pulpwood	2	Cords		
	Mixed Aspen		6	Cords		
	<i>Quaking Aspen</i>		6	Cords		
	Mixed Hardwood		700	Cords		
	<i>Basswood</i>		38	Cords		
	<i>Black Cherry</i>		15	Cords		

DESCRIPTION OF TIMBER BY PU (PU), CON'T

PU	MARKET GROUP	PRODUCT	QUANTITY	UNIT	ACRES	ADVERTISE PRICE
4 con't	<i>Paper Birch</i> <i>Red Maple</i> <i>Sugar Maple</i>	<i>Pulpwood</i>	4 49 594	<i>Cords</i> <i>Cords</i> <i>Cords</i>		
5	Basswood Black Cherry Paper Birch Red Maple Sugar Maple Balsam Fir Mixed Aspen <i>Quaking Aspen</i> Mixed Hardwood <i>Basswood</i> <i>Black Cherry</i> <i>Ironwood</i> <i>Paper Birch</i> <i>Red Maple</i> <i>Sugar Maple</i>	Sawtimber Pulpwood	19.7 1.0 0.2 0.4 64.2 2 6 6 606 32 13 1 3 42 515	MBF MBF MBF MBF MBF Cords Cords <i>Cords</i> Cords <i>Cords</i> <i>Cords</i> <i>Cords</i> <i>Cords</i> <i>Cords</i> <i>Cords</i>	61.9	\$36,900.90
6	Basswood Black Cherry Paper Birch Red Maple Sugar Maple Balsam Fir Mixed Aspen <i>Quaking Aspen</i> Mixed Hardwood <i>Basswood</i> <i>Black Cherry</i> <i>Ironwood</i> <i>Paper Birch</i> <i>Red Maple</i> <i>Sugar Maple</i>	Sawtimber Pulpwood	14.6 0.8 0.1 0.3 47.7 1 5 5 449 24 9 1 2 31 382	MBF MBF MBF MBF MBF Cords Cords <i>Cords</i> Cords <i>Cords</i> <i>Cords</i> <i>Cords</i> <i>Cords</i> <i>Cords</i> <i>Cords</i>	46.0	\$27,397.80
7	Basswood Black Cherry Paper Birch Red Maple Sugar Maple Balsam Fir Mixed Aspen <i>Quaking Aspen</i> Mixed Hardwood <i>Basswood</i> <i>Black Cherry</i> <i>Ironwood</i> <i>Paper Birch</i> <i>Red Maple</i> <i>Sugar Maple</i>	Sawtimber Pulpwood	14.3 0.8 0.1 0.3 46.5 1 5 5 438 23 9 1 2 30 373	MBF MBF MBF MBF MBF Cords Cords <i>Cords</i> Cords <i>Cords</i> <i>Cords</i> <i>Cords</i> <i>Cords</i> <i>Cords</i> <i>Cords</i>	44.9	\$26,725.95
8	Basswood Black Cherry Paper Birch Red Maple Sugar Maple Balsam Fir Mixed Aspen	Sawtimber Pulpwood	22.1 1.2 0.2 0.5 71.8 2 7	MBF MBF MBF MBF MBF Cords Cords	69.3	\$41,296.20

DESCRIPTION OF TIMBER BY PU (PU), CON'T

PU	MARKET GROUP	PRODUCT	QUANTITY	UNIT	ACRES	ADVERTISE PRICE
8 con't	<i>Quaking Aspen</i>	<i>Pulpwood</i>	7	<i>Cords</i>		
	Mixed Hardwood		678	Cords		
	<i>Basswood</i>		36	<i>Cords</i>		
	<i>Black Cherry</i>		14	<i>Cords</i>		
	<i>Ironwood</i>		1	<i>Cords</i>		
	<i>Paper Birch</i>		4	<i>Cords</i>		
	<i>Red Maple</i>		47	<i>Cords</i>		
	<i>Sugar Maple</i>		576	<i>Cords</i>		
9	Basswood	Sawtimber	14.8	MBF	46.5	\$27,714.70
	Black Cherry		0.8	MBF		
	Paper Birch		0.1	MBF		
	Red Maple		0.3	MBF		
	Sugar Maple		48.2	MBF		
	Balsam Fir		Pulpwood	1		
	Mixed Aspen	5		Cords		
	<i>Quaking Aspen</i>	5		<i>Cords</i>		
	Mixed Hardwood	455		Cords		
	<i>Basswood</i>	24		<i>Cords</i>		
	<i>Black Cherry</i>	10		<i>Cords</i>		
	<i>Ironwood</i>	1		<i>Cords</i>		
	<i>Paper Birch</i>	2		<i>Cords</i>		
	<i>Red Maple</i>	31		<i>Cords</i>		
	<i>Sugar Maple</i>	387	<i>Cords</i>			
10	Basswood	Sawtimber	15.6	MBF	49.0	\$29,183.90
	Black Cherry		0.8	MBF		
	Paper Birch		0.1	MBF		
	Red Maple		0.3	MBF		
	Sugar Maple		50.8	MBF		
	Balsam Fir		Pulpwood	1		
	Mixed Aspen	5		Cords		
	<i>Quaking Aspen</i>	5		<i>Cords</i>		
	Mixed Hardwood	479		Cords		
	<i>Basswood</i>	25		<i>Cords</i>		
	<i>Black Cherry</i>	10		<i>Cords</i>		
	<i>Ironwood</i>	1		<i>Cords</i>		
	<i>Paper Birch</i>	3		<i>Cords</i>		
	<i>Red Maple</i>	33		<i>Cords</i>		
	<i>Sugar Maple</i>	407	<i>Cords</i>			
TOTAL:			719.8	MBF		
TOTAL:			5,163	Cords		

Sale Specific Conditions & Requirements

Sale Name: C-173 Contract

Sale Number: 41-015-25 Seq#: 1

1 - Sale Area

1.2 - Boundaries

1.2.1 - Painted Boundaries (9/19)

The sale boundary and Payment Unit boundaries are marked and identified by blue, red, purple and yellow paint. Exterior sale boundary lines against private property are marked with blue paint. Exterior sale boundary lines against state are marked with red paint. Regeneration Gaps are marked with purple paint. Interior Payment Unit boundaries are marked with yellow paint. The painted boundary line trees are not Included Timber and are to be protected unless marked with orange paint.

2 - Timber Specifications

2.1 - Included Timber

2.1.3 - Cut Tree Marked Unit(s) (12/08)

Within Payment Unit(s) 1-10, all trees are designated for cutting when marked with orange paint above and below stump height, regardless of merchantability. In addition, cut all merchantable balsam fir. Within regeneration gaps marked in purple all trees are to be cut down to 1" DBH.

3 - Payments

3.3 - Pre-measured Sales

3.3.4 - Dividing Payment Units (7/14)

Payment Unit(s) exceeding \$20,000 may be divided at the request of the Purchaser and upon approval of the Unit Manager. Dividing Payment Units is a contract modification which requires a Timber Sale Contract Amendment.

4 - Transportation

4.1 - Construction

4.1.3 - Slash and Earthen Piles (8/04)

Piles or windrows of earth along roads and landings that have been widened or constructed shall be leveled. Slash from road maintenance or construction, including stumps, shall be dispersed throughout the sale.

4.1.6 - Road Construction (4/24)

Construction of new roads or improvements of existing roads shall be done in such a way as to minimize the environmental and visual impacts. Merchantable trees shall be cut and utilized unless otherwise directed. Non-merchantable trees shall be severed and laid flat on the ground. Slash shall be scattered, not left in windrows, and kept a minimum of 10 feet back from the road edge. Stumps shall be set upright, not left on edge, and be moved at least 10 feet away from the road edge. Disturbed soil shall be feathered into the woods and not left in berms or windrows.

4.1.7 - Road Closure (10/11)

All new roads built into the sale must be blocked to vehicle traffic upon completion of the sale. Overgrown roads that are reopened shall be considered new roads. In general, this will require constructing a four (4') foot high berm of stumps and logs covered with earth. These roads must be rendered impassable to cars and trucks. Contact the Sale Administrator for specific details of design and placement.

4.1.8 - Road Work (1) (8/07)

The following road work is required: 300 cubic yards of 3-inch minus (breaker run gravel) must be purchased, hauled and spread on Section 34 Road and/or the interior north/south road. Exact location of road work will be determined at the pre-sale meeting. The roadwork must be complete before hauling begins.

4.1.10 - Oversight (12/08)

The Unit Manager, or his/her representative, must be present when the road improvement project is initiated.

4.2 - Maintenance

4.2.4 - Grading (10/16)

For completion of the sale, state forest roads must be graded. In general, this will require a road grader or bulldozer to shape up the roads after forest products have been hauled off site. This includes cleaning of drainage areas, grading, crowning and filling with gravel, if necessary. The grading equipment to be used must be approved by the Unit Manager or his/her representative.

4.3 - Public Right-of-Way

4.3.2 - County R-O-W (12/06)

The County must be contacted prior to crossing or harvesting in the County Road R-O-W. This applies to the Chapel Road.

5 - Operations

5.2 - Conduct of Operations

5.2.2 - Hazard Trees/Snags

5.2.2.1 - Den Trees (10/16)

Obvious hollow and/or den trees shall be protected and left standing unless they are a safety hazard.

5.2.3 - Operating Restrictions

5.2.3.3 - Bark Slippage Restriction (3/09)

Within Payment Unit(s) 1-10, unless changed by written agreement, cutting and skidding are not permitted during the period of April 15 to July 15. This restriction is because of bark slippage.

5.2.32 - Decking/Landing Restoration (9/13)

All decking and landing areas must have the surface area restored to a condition equal to or better than before. This is to ensure the proper regeneration of the stand. Wood debris, chips and "cookies" from trimmings must be removed or scattered away from landing and loading areas and may not be windrowed on the edge.

5.2.38 - No Decking Against Live Trees (2/04)

Cut products may not be decked against unmarked or designated leave trees.

5.4 - Soil Protection

5.4.1 - Rutting Restriction, General (7/16)

The Unit Manager or his/her representative may restrict hauling and/or skidding if ruts exceed the specified depth. With the Unit Manager or his/her representative's approval, the Purchaser may return to the area when the risk of rutting has decreased.

5.8 - Protection of Endangered Species

5.8.3 - Red-shouldered Hawk or Goshawk (1) (1/25)

In the event that an active red shoulder hawk or goshawk nest is found, the contract may be amended to protect the nest site until the nest is determined to be inactive. The value of the trees in this excluded area will be refunded or credited to the Purchaser. The nest will be buffered with a five-chain radius (eight acre) protection area, centered on the nest tree, in which there will be no cutting or new roads constructed. Avoid human disturbance, including loading and skidding, in the protection area.

An additional zone of five chains (ten chains centered on the active nest tree) will be established in which there is no management activity from April 1 to July 30 (UP). Limit biomass harvesting and chipping operations within this ten-chain zone, retain the maximum one-third of residues per the Woody Biomass Harvesting Guidelines (Michigan DNR 2010). Nests determined to be inactive will be protected with a one-chain no-harvest buffer.

6 - Safety and Fire Prevention

6.2 - Signing

6.2.1 - Road Posting (10/20)

The Purchaser is responsible for posting and maintaining caution signs on Chapel Rd. prior to beginning operations. The road must be posted at appropriate distances from the Sale Area to warn of logging activity and truck traffic. Signs must be removed when harvest operations are suspended or completed. The Purchaser will provide these signs.



TIMBER SALE MAP

This information provided by authority of Part 525, 1994 PA 451, as amended.

Sale Number 41-015-25	Date 09/22/2025	
Scale 1:20,000	Page 1	Of 1

Forest Management Unit Shingleton Mgt Unit	County Alger	Mapped By: Molin
		Cruised By: Molin

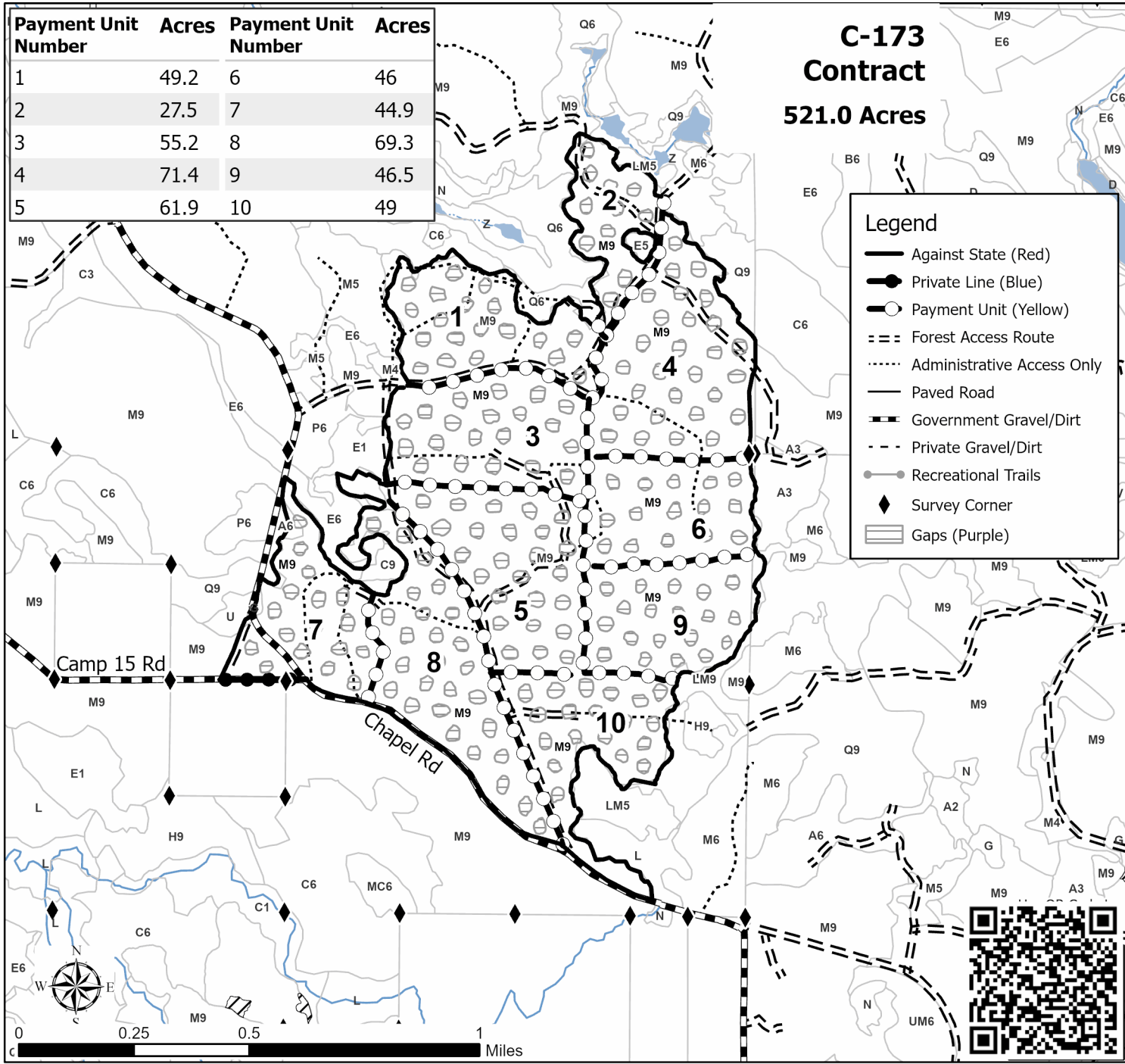
Township 47N	Range 17W	Section(s) and Subdivision(s) Sec. 4 S1/2NE,SW,SE; Sec. 8 E1/2NE; Sec. 9 NW,NE,N1/2SW,SE,SW,SE;
------------------------	---------------------	---

Cover Type			
A = Aspen	J = Jack Pine	O = Oak	U = Upland Brush
B = Paper Birch	K = Rock	P = Lowland Poplar	UM = Upland Mix Forest
C = Cedar	L = Lowland Brush	Q = Mixed Swamp Conifer	V = Bog or Marsh
D = Treed Bog	LM = Lowland Mix Forest	R = Red Pine	W = White Pine
E = Swamp Hardwoods	M = Maple, Beech, Birch	S = Black Spruce	X = Non Stocked
F = Spruce/Fir	MC = Mixed Conifer	T = Tamarack	Y = Sand
G = Grass	MD = Mixed Deciduous	Z = Water	
H = Hemlock	N = Marsh		

Density	
0 = Non Stocked	5 = Pole Timber Medium
1 = Seedling Sapling Poor	6 = Pole Timber Well
2 = Seedling Sapling Medium	7 = Saw Timber Poor
3 = Seedling Sapling Well	8 = Saw Timber Medium
4 = Pole Timber Poor	9 = Saw Timber Well

Payment Unit Number	Acres	Payment Unit Number	Acres
1	49.2	6	46
2	27.5	7	44.9
3	55.2	8	69.3
4	71.4	9	46.5
5	61.9	10	49

C-173 Contract
521.0 Acres



Legend	
	Against State (Red)
	Private Line (Blue)
	Payment Unit (Yellow)
	Forest Access Route
	Administrative Access Only
	Paved Road
	Government Gravel/Dirt
	Private Gravel/Dirt
	Recreational Trails
	Survey Corner
	Gaps (Purple)