



**DEPARTMENT OF NATURAL RESOURCES  
STATE OF MICHIGAN  
TIMBER SALE PROSPECTUS #7790**

**SCHEDULED SALE DATE AND TIME: 2:00 p.m. (local time) on March 11, 2026.**

**LOCATION: SHINGLETON MGMT UNIT, PO BOX 67, M 28 WEST, SHINGLETON, MI 49884.**

**CONTACT NAME: Robert Burnham**

**PHONE NUMBER: (906) 420-1645**

**PROSPECTUS NOTE:** The bidder is advised to inspect the sale area and review the location, estimated volumes, operating costs and contract terms of proposed sales. Please be aware that some landowners may request 60 days or more notice for access across their land.

Notice is hereby given that bids will be received by the Unit Manager, SHINGLETON MANAGEMENT UNIT, for certain timber on the following described lands:

Hazy Mix (41-016-25) / T47N, R13W, SEC. 10, N1/2NE,NESW,S1/2SW,W1/2SE.

T47N, R13W, SEC. 11, NWNW,N1/2SW,NWSE,S1/2SE.

T47N, R13W, SEC. 15, NW.

T47N, R13W, SEC. 2 , S1/2SW,NESE,S1/2SE.

T47N, R13W, SEC. 3 , S1/2SE.

Schoolcraft County, Advertised Price \$184,232.60, 406.0 Acres, Hardwood, Red Pine.

SALE NOTE: The Danaher Pains ORV Trail is shown on the Timber Sale Map. See Sale Spec 5.2.39 for restrictions. Snowmobile Trail 443 is shown on the Timber Sale Map. See Sale Spec 5.2.41 for specific information.

Within Payment Unit(s) 1 and 10, harvesting is not permitted during the period of April 15 to July 15 because of bark slippage.

A recreation site such as a trail, pathway, or campground is within the sale area or the vicinity. Certain restrictions/specifications may be applicable including time restrictions.

## TIMBER SALE INFORMATION

### Hazy Mix (41-016-25)

T47N, R13W, SEC. 10; T47N, R13W, SEC. 11; T47N, R13W, SEC. 15; T47N, R13W, SEC. 2; T47N, R13W, SEC. 3.  
Schoolcraft County (Advertised Price \$184,232.60)

SALE NOTE: The Danaher Pains ORV Trail is shown on the Timber Sale Map. See Sale Spec 5.2.39 for restrictions. Snowmobile Trail 443 is shown on the Timber Sale Map. See Sale Spec 5.2.41 for specific information.

Within Payment Unit(s) 1 and 10, harvesting is not permitted during the period of April 15 to July 15 because of bark slippage.

A recreation site such as a trail, pathway, or campground is within the sale area or the vicinity. Certain restrictions/specifications may be applicable including time restrictions.

A timber sale contract for this lump sum, sealed bid timber sale will be awarded to the responsible bidder offering the highest sealed bid price. All units of volume listed below were estimated using the Inventory Manager computer program and the new Michigan taper model. Bids must be at or above the following advertised price for each product and species:

<u>PRODUCTS &amp; SPECIES</u>	<u>ESTIMATED UNITS*</u>		<u>ADVERTISED PRICE</u>
Sawtimber			
Red Maple	49.8	MBF	\$ 115.00 / MBF
Sugar Maple	2.1	MBF	\$ 350.00 / MBF
Pulpwood			
Balsam Fir	2	Cords	\$ 14.65 / Cord
Black Cherry	5	Cords	\$ 22.75 / Cord
Jack Pine	16	Cords	\$ 35.85 / Cord
Mixed Aspen	27	Cords	\$ 31.20 / Cord
Mixed Hardwood	872	Cords	\$ 22.75 / Cord
Red Pine	1,972	Cords	\$ 78.00 / Cord
White Pine	131	Cords	\$ 19.05 / Cord
White Spruce	5	Cords	\$ 12.40 / Cord

\* The total volume is statistically estimated within plus (+) or minus (-) 10.70 percent. There are an estimated 3,151 cords on this timber sale, plus or minus 337 cords at the 95% confidence level. The estimated units are final and not subject to adjustment. Prospective bidders are urged to examine this timber and to make their own estimates of quantity and quality.

### **BOND AND PAYMENT SCHEDULE:**

1. A bond in the amount of \$9,211.63 to insure faithful performance of the conditions of the contract will be deposited by the successful bidder within 21 days of the sale award.
2. Cutting in any sale or unit without the required advance payment would be considered a trespass.
3. Total payment must be paid in advance or according to the following schedule:
  - (a) Ten percent (10%) of the sale value must be paid within 21 days of the sale award.
  - (b) The 10% down payment will be credited towards the first unit cut.
  - (c) Payment for each of the following units must be made before cutting begins in that unit:

<u>PAYMENT UNIT NUMBER</u>	<u>PERCENT OF TOTAL SALE VALUE</u>
01	10.4%
02	5.8%
03	5.2%
04	5.6%
05	8.0%
06	6.2%
07	4.0%
08	4.3%
09	3.3%
10	3.9%
11	1.0%
12	5.6%
13	3.4%
14	8.4%
15	11.1%
16	6.6%
17	7.2%

4. If no cutting takes place, the 10% down payment will not be refunded.
5. Operations on the contract issued will terminate on 06/30/2029.

### **SALE STATISTICS**

Volumes were calculated in cubic feet using the Michigan taper model. Cubic foot volume includes all wood inside bark for the product indicated. For display purposes, cubic feet were converted to cords and MBF using a simple conversion factor, e.g. 79 cubic feet per cord and 185 cubic feet per MBF. The cubic foot volumes are precise; the cords and MBF volumes are not. Cubic foot volume cannot be directly converted to cords or boards with precision.

### **SALE VOLUMES**

The total estimated sale volume may not equal the sum of the species/products due to the nature of statistical calculations associated with double sampling methodology.

VOLUME			STATISTICAL RANGE IN CORDS	
TOTAL CUBIC FEET	TOTAL CORDS	PERCENT ERROR	MINIMUM	MAXIMUM
248,899	3,151	10.70%	2,813	3,488

### **VDU VOLUMES**

A VDU is a Volume Determination Unit. Volumes and their associated statistics are calculated at the VDU level and summarized to the sale level. There is often a one to one relationship between a VDU and a Payment Unit, but not always, depending on the cruise design. Refer to the VDU TO PAYMENT UNIT table.

	VOLUME			RANGE IN CORDS	
VDU	TOTAL CUBIC FEET	TOTAL CORDS	PERCENT ERROR	MINIMUM	MAXIMUM
13	165,121	2,090	13.96%	1,798	2,382
14	5,301	67	41.20%	39	95
34	78,477	993	17.12%	823	1,163
<b>TOTAL:</b>	<b>248,899</b>	<b>3,151</b>		<b>2,661</b>	<b>3,640</b>

### **VDU TO PAYMENT UNIT**

When a VDU is associated with more than one Payment Unit (PU), the VDU volumes are assigned to the PU based on acres of the VDU within the PU.

VDU	VDU ACRES	PU	PU ACRES
<b>TOTAL:</b>			

**DESCRIPTION OF TIMBER BY PU (PU)**

PU	MARKET GROUP	PRODUCT	QUANTITY	UNIT	ACRES	ADVERTISE PRICE
1	Red Maple	Sawtimber	36.2	MBF	68.6	\$19,111.50
	Sugar Maple		1.5	MBF		
	Mixed Hardwood	Pulpwood	634	Cords		
	<i>Red Maple</i>		561	<i>Cords</i>		
	<i>Sugar Maple</i>		73	<i>Cords</i>		
2	Jack Pine	Pulpwood	1	Cords	20.3	\$10,730.40
	Mixed Aspen		1	Cords		
	<i>Quaking Aspen</i>		1	<i>Cords</i>		
	Red Pine		135	Cords		
	White Pine		7	Cords		
3	Jack Pine	Pulpwood	1	Cords	18.2	\$9,588.15
	Red Pine		121	Cords		
	White Pine		6	Cords		
4	Jack Pine	Pulpwood	1	Cords	19.5	\$10,262.40
	Mixed Aspen		1	Cords		
	<i>Quaking Aspen</i>		1	<i>Cords</i>		
	Red Pine		129	Cords		
	White Pine		7	Cords		
5	Jack Pine	Pulpwood	1	Cords	28.0	\$14,765.55
	Mixed Aspen		1	Cords		
	<i>Quaking Aspen</i>		1	<i>Cords</i>		
	Red Pine		186	Cords		
	White Pine		10	Cords		
6	Jack Pine	Pulpwood	1	Cords	21.6	\$11,373.45
	Mixed Aspen		1	Cords		
	<i>Quaking Aspen</i>		1	<i>Cords</i>		
	Red Pine		143	Cords		
	White Pine		8	Cords		
7	Jack Pine	Pulpwood	1	Cords	13.9	\$7,307.10
	Red Pine		92	Cords		
	White Pine		5	Cords		
8	Jack Pine	Pulpwood	1	Cords	15.1	\$7,931.10
	Red Pine		100	Cords		
	White Pine		5	Cords		
9	Jack Pine	Pulpwood	1	Cords	11.5	\$6,040.05
	Red Pine		76	Cords		
	White Pine		4	Cords		
10	Red Maple	Sawtimber	13.6	MBF	25.7	\$7,188.50
	Sugar Maple		0.6	MBF		
	Mixed Hardwood	Pulpwood	238	Cords		
	<i>Red Maple</i>		210	<i>Cords</i>		
	<i>Sugar Maple</i>		28	<i>Cords</i>		
11	Balsam Fir	Pulpwood	2	Cords	15.4	\$1,784.85
	Black Cherry		5	Cords		
	Jack Pine		1	Cords		
	Mixed Aspen		18	Cords		
	<i>Quaking Aspen</i>		18	<i>Cords</i>		
	Red Pine		6	Cords		
	White Pine		27	Cords		
	White Spruce		5	Cords		
12	Jack Pine	Pulpwood	1	Cords	19.4	\$10,262.40
	Mixed Aspen		1	Cords		
	<i>Quaking Aspen</i>		1	<i>Cords</i>		
	Red Pine		129	Cords		

**DESCRIPTION OF TIMBER BY PU (PU), CON'T**

PU	MARKET GROUP	PRODUCT	QUANTITY	UNIT	ACRES	ADVERTISE PRICE
12 con't	White Pine	Pulpwood	7	Cords		
13	Jack Pine	Pulpwood	1	Cords	12.1	\$6,352.05
	Red Pine		80	Cords		
	White Pine		4	Cords		
14	Jack Pine	Pulpwood	1	Cords	29.4	\$15,467.55
	Mixed Aspen		1	Cords		
	<i>Quaking Aspen</i>		1	<i>Cords</i>		
	Red Pine		195	Cords		
	White Pine		10	Cords		
15	Jack Pine	Pulpwood	2	Cords	39.1	\$20,649.60
	Mixed Aspen		1	Cords		
	<i>Quaking Aspen</i>		1	<i>Cords</i>		
	Red Pine		260	Cords		
	White Pine		14	Cords		
16	Jack Pine	Pulpwood	1	Cords	22.9	\$12,075.45
	Mixed Aspen		1	Cords		
	<i>Quaking Aspen</i>		1	<i>Cords</i>		
	Red Pine		152	Cords		
	White Pine		8	Cords		
17	Jack Pine	Pulpwood	1	Cords	25.3	\$13,342.50
	Mixed Aspen		1	Cords		
	<i>Quaking Aspen</i>		1	<i>Cords</i>		
	Red Pine		168	Cords		
	White Pine		9	Cords		
TOTAL:			51.9	MBF		
TOTAL:			3,030	Cords		

## **Sale Specific Conditions & Requirements**

**Sale Name: Hazy Mix**

**Sale Number: 41-016-25 Seq#: 1**

### **1 - Sale Area**

#### **1.2 - Boundaries**

##### **1.2.1 - Painted Boundaries (9/19)**

The sale boundary and Payment Unit boundaries are marked and identified by blue, red and yellow paint. Exterior sale boundary lines against private property are marked with blue paint. Exterior sale boundary lines against state are marked with red paint. Interior Payment Unit boundaries are marked with yellow paint. The painted boundary line trees are not Included Timber and are to be protected unless marked with orange paint.

### **2 - Timber Specifications**

#### **2.1 - Included Timber**

##### **2.1.2 - Clearcut Unit(s) w/o Unmerchantable Trees (8/11)**

Within Payment Unit(s) 11, cut all trees which meet minimum piece specifications in 2.2 Utilization, except do not cut white pine that are 24 inches or greater at DBH.

##### **2.1.3 - Cut Tree Marked Unit(s) (12/08)**

Within Payment Unit(s) 1-10, 12-17, all trees are designated for cutting when marked with orange paint above and below stump height, regardless of merchantability.

#### **2.2 - Utilization**

##### **2.2.3 - Stump Heights (12/24)**

Stump heights within Payment Unit(s) 2 -9 and 12-17 shall not exceed 12 inches for trees greater than 10 inches at DBH and four (4) inches for trees smaller than 10 inches at DBH. This is in order to facilitate future planting operations.

### **3 - Payments**

#### **3.3 - Pre-measured Sales**

##### **3.3.4 - Dividing Payment Units (7/14)**

Payment Unit(s) that are \$20,000 may be divided at the request of the Purchaser and upon approval of the Unit Manager. Dividing Payment Units is a contract modification which requires a Timber Sale Contract Amendment.

### **4 - Transportation**

#### **4.1 - Construction**

##### **4.1.3 - Slash and Earthen Piles (8/04)**

Piles or windrows of earth along roads and landings that have been widened or constructed shall be leveled. Slash from road maintenance or construction, including stumps, shall be dispersed throughout the sale.

##### **4.1.6 - Road Construction (4/24)**

Construction of new roads or improvements of existing roads shall be done in such a way as to minimize the environmental and visual impacts. Merchantable trees shall be cut and utilized unless otherwise directed. Non-merchantable trees shall be severed and laid flat on the ground. Slash shall be scattered, not left in windrows, and kept a minimum of 10 feet back from the road edge. Stumps shall be set upright, not left on edge, and be moved at least 10 feet away from the road edge. Disturbed soil shall be feathered into the woods and not left in berms or windrows.

##### **4.1.7 - Road Closure (10/11)**

All new roads built into the sale must be blocked to vehicle traffic upon completion of the sale. Overgrown roads that are reopened shall be considered new roads. In general, this will require constructing a four (4') foot high berm of stumps and logs covered with earth. Stumps and brush must be placed along the remainder of the trail. These roads must be rendered impassable to cars and trucks. All stumps from road building and landing construction must be reserved to block any newly

constructed roads upon completion of the sale. These stumps must be scattered along the road system to prohibit vehicular movement. Contact the Sale Administrator for specific details of design and placement.

## 4.2 - Maintenance

### 4.2.4 - Grading (10/16)

For completion of the sale, state forest roads must be graded. In general, this will require a road grader or bulldozer to shape up the roads after forest products have been hauled off site. This includes cleaning of drainage areas, grading, crowning and filling with gravel, if necessary. The grading equipment to be used must be approved by the Unit Manager or his/her representative.

## 4.3 - Public Right-of-Way

### 4.3.2 - County R-O-W (12/06)

The County must be contacted prior to crossing or harvesting in the County Road R-O-W. This applies to Payment Unit 2, 4, 6-7, 15-17 and County Road 451.

# 5 - Operations

## 5.2 - Conduct of Operations

### 5.2.2 - Hazard Trees/Snags

#### 5.2.2.1 - Den Trees (10/16)

Obvious hollow and/or den trees shall be protected and left standing unless they are a safety hazard.

### 5.2.3 - Operating Restrictions

#### 5.2.3.3 - Bark Slippage Restriction (3/09)

Within Payment Unit(s) 1 and 10, unless changed by written agreement, cutting and skidding are not permitted during the period of April 15 to July 15. This restriction is because of bark slippage.

#### 5.2.3.6 - Bark Beetle Restriction (1/25)

In the event drought creates a high risk of pine bark beetle infestation, pine is not to be cut during the period March 1 through July 1, unless all portions of trees greater than two (2) inches in diameter are removed from the Sale Area, reduced to chips, or treated to the satisfaction of the Unit Manager or his/her representative, within 15 days of being severed from the stump. Pine log decks, pulpwood piles and treetops that are piled for chipping in the fall or winter within a 1/4 mile of susceptible sites must be removed before March 15. Residual slash must not be placed in piles or rows and must be spread over the site for quick drying. The Department of Natural Resources will exercise this specification if the risk of damage warrants.

### 5.2.32 - Decking/Landing Restoration (9/13)

All decking and landing areas must have the surface area restored to a condition equal to or better than before. This is to ensure the proper regeneration of the stand. Wood debris, chips and "cookies" from trimmings must be removed or scattered away from landing and loading areas and may not be windrowed on the edge.

### 5.2.38 - No Decking Against Live Trees (2/04)

Cut products may not be decked against unmarked or designated leave trees.

### 5.2.39 - ORV Trail/Route Protection (4/18)

The Danaher Plains ORV Trail is shown on the Timber Sale Map. All stumps within five (5) feet of the trail must be cut flush with the ground. Maintain a 20-foot-wide slash, debris, and rut free zone daily using the ORV trail or route as the centerline. Do not run equipment down the ORV route.

### 5.2.41 - Snowmobile Trail Protection (9/11)

Snowmobile Trail 443 runs along the shoulder of Country Road 451 and is shown on the Timber Sale Map. Do not cut or damage posts with orange trail markers or traffic control signs. The snowmobile trail may only be crossed at right angles. Maintain a 20-foot-wide slash, debris, and rut free zone daily using the snowmobile trail as the centerline. No decking of forest products will be permitted along the snowmobile trail. All stumps within 20 feet of the snowmobile trail must be cut at ground level.

## 5.8 - Protection of Endangered Species

### 5.8.3 - Red-shouldered Hawk or Goshawk (1) (1/25)

In the event that an active red shoulder hawk or goshawk nest is found, the contract may be amended to protect the nest site until the nest is determined to be inactive. The value of the trees in this excluded area will be refunded or credited to the Purchaser. The nest will be buffered with a five-chain radius (eight acre) protection area, centered on the nest tree, in which there will be no cutting or new roads constructed. Avoid human disturbance, including loading and skidding, in the protection area.

An additional zone of five chains (ten chains centered on the active nest tree) will be established in which there is no management activity from April 1 to July 30. Limit biomass harvesting and chipping operations within this ten-chain zone, retain the maximum one-third of residues per the Woody Biomass Harvesting Guidelines (Michigan DNR 2010). Nests determined to be inactive will be protected with a one-chain no-harvest buffer.

## 6 - Safety and Fire Prevention

### 6.2 - Signing

#### 6.2.2 - Snowmobile Trail Posting (10/20)

The Purchaser is responsible for posting and maintaining caution signs on snowmobile trail 443 prior to beginning operations during the snowmobile season (approximately December 1 to March 31). The trail must be posted at appropriate distances from the Sale Area to warn of logging activity and truck traffic. Signs must be removed when harvest operations are suspended or completed. The Purchaser will provide these signs.

#### 6.2.3 - Recreational Trail Posting (10/20)

The Purchaser is responsible for posting and maintaining caution signs on Danaher Plains Trail prior to beginning operations. The trail must be posted at appropriate distances from the Sale Area to warn of logging activity and truck traffic at both ends of the trail. Signs must be removed when harvest operations are suspended or completed. The Purchaser will provide these signs.



**TIMBER SALE MAP**

This information provided by authority of Part 525, 1994 PA 451, as amended.

Sale Number  
**41-016-25**Date  
**09/18/2025**

Forest Management Unit	County	Mapped By: Anthony Ciaramitaro
Shingleton Mgt Unit	Schoolcraft	Cruised By: Shingleton Unit Staff

Scale	Page	Of
1:24,130	1	1

Township	Range	Section(s) and Subdivision(s)
47N	13W	S1/2SW,NESE,S1/2SE; Sec. 3 S1/2SE; Sec. 10 N1/2NE,NESW,S1/2SW,W1/2SE; Sec. 11 NWNW,N1/2SW,NWSE,S1/2SE; Sec. 15 NW; Sec. 2

**Cover Type**

A = Aspen	J = Jack Pine	O = Oak	U = Upland Brush
B = Paper Birch	K = Rock	P = Lowland Poplar	UM = Upland Mix Forest
C = Cedar	L = Lowland Brush	Q = Mixed Swamp Conifer	V = Bog or Marsh
D = Treed Bog	LM = Lowland Mix Forest	R = Red Pine	W = White Pine
E = Swamp Hardwoods	M = Maple, Beech, Birch	S = Black Spruce	X = Non Stocked
F = Spruce/Fir	MC = Mixed Conifer	T = Tamarack	Y = Sand
G = Grass	MD = Mixed Deciduous		Z = Water
H = Hemlock	N = Marsh		

**Density**

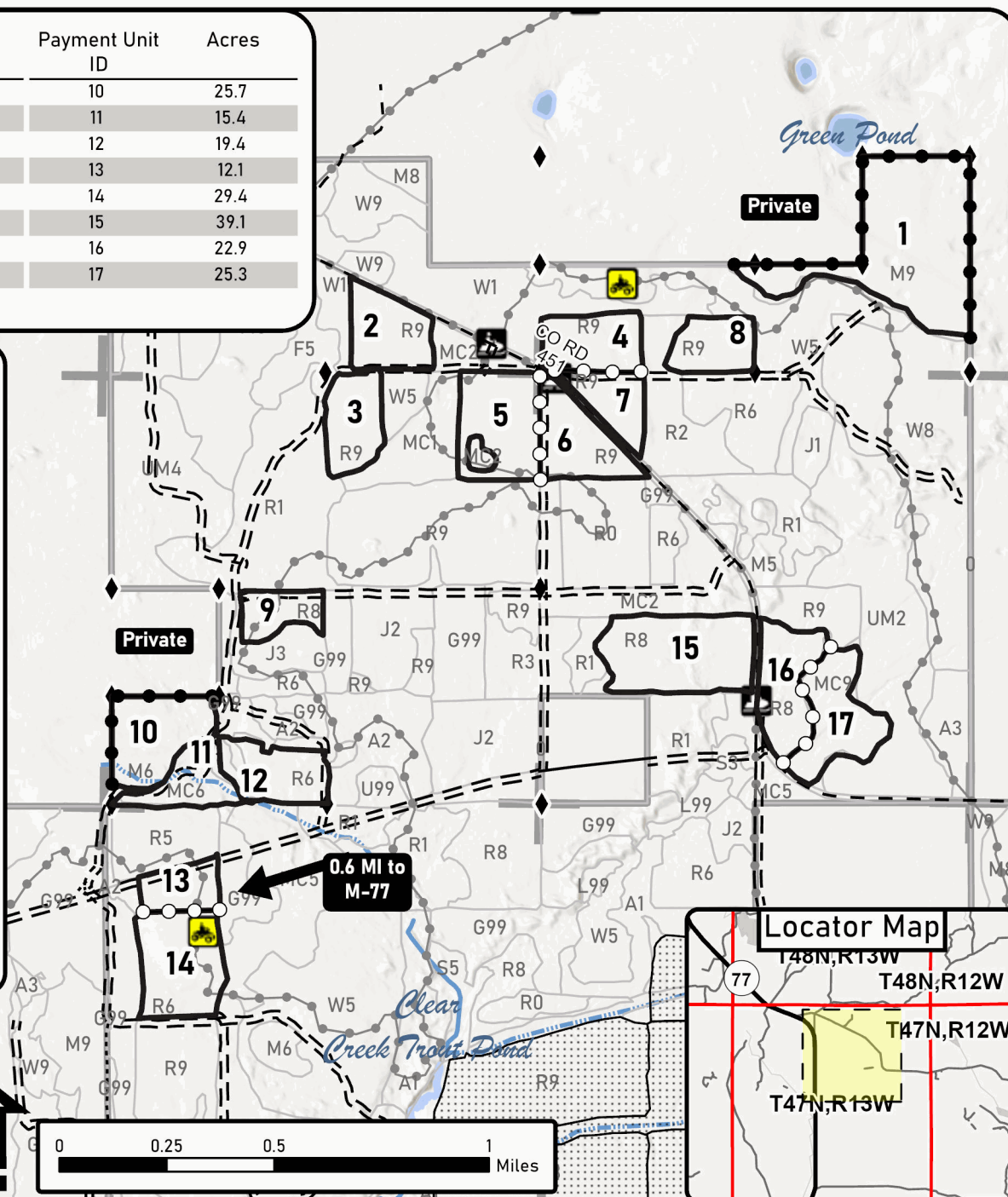
0 = Non Stocked	5 = Pole Timber Medium
1 = Seedling Sapling Poor	6 = Pole Timber Well
2 = Seedling Sapling Medium	7 = Saw Timber Poor
3 = Seedling Sapling Well	8 = Saw Timber Medium
4 = Pole Timber Poor	9 = Saw Timber Well

**Hazy Mix**  
406.0 Acres

Payment Unit ID	Acres	Payment Unit ID	Acres
1	68.6	10	25.7
2	20.3	11	15.4
3	18.2	12	19.4
4	19.5	13	12.1
5	28	14	29.4
6	21.6	15	39.1
7	13.9	16	22.9
8	15.1	17	25.3
9	11.5		

**Legend**

- Against State (Red)
- Payment Unit (Yellow)
- Against Private (Blue)
- Primary Forest Road
- Forest Access Route
- Administrative Access Only
- Paved Road
- Private Gravel/Dirt
- ORV Trail
- Snowmobile
- Survey Grade Corner
- Nearby Timber Sale
- Recreational Trails
- Highway
- Powerline
- Intermittent Stream
- Perennial River
- Lakes and Rivers
- MIRIS Section Corner

**Locator Map**