



**DEPARTMENT OF NATURAL RESOURCES
STATE OF MICHIGAN
TIMBER SALE PROSPECTUS #7806**

SCHEDULED SALE DATE AND TIME: **2:00 p.m. (local time) on July 20, 2026.**

LOCATION: **GWINN MGMT UNIT, 410 WEST M 35, GWINN, MI 49841.**

CONTACT NAME: Mike Brodeur

PHONE NUMBER: (906) 346-9201

PROSPECTUS NOTE: The bidder is advised to inspect the sale area and review the location, estimated volumes, operating costs and contract terms of proposed sales. Please be aware that some landowners may request 60 days or more notice for access across their land.

Notice is hereby given that bids will be received by the Unit Manager, GWINN MANAGEMENT UNIT, for certain timber on the following described lands:

Hiker's Paradise (32-011-26) / T47N, R23W, SEC. 10, E1/2SW, SE.

T47N, R23W, SEC. 12, SESE.

T47N, R23W, SEC. 13, NENE, SESW, NESE, S1/2SE.

T47N, R23W, SEC. 15, NENW, N1/2NE, SENE, SE.

Marquette County, Advertised Price \$63,950.75, 219.7 Acres, Hardwood, Spruce/Fir/Tamarack.

SALE NOTE: Payment Units 1-10, 12, and 13 are restricted to frozen conditions due to wet soils and deer yard, generally 12/1 - 4/15. Payment Units 6 and 11 are restricted during the bark slip period, 4/15 - 7/15.

A recreation site such as a trail, pathway, or campground is within the sale area or the vicinity. Certain restrictions/specifications may be applicable including time restrictions. Access may be through other public land.

TIMBER SALE INFORMATION

Hiker's Paradise (32-011-26)

T47N, R23W, SEC. 10; T47N, R23W, SEC. 12; T47N, R23W, SEC. 13; T47N, R23W, SEC. 15.

Marquette County (Advertised Price \$63,950.75)

SALE NOTE: Payment Units 1-10, 12, and 13 are restricted to frozen conditions due to wet soils and deer yard, generally 12/1 - 4/15. Payment Units 6 and 11 are restricted during the bark slip period, 4/15 - 7/15.

A recreation site such as a trail, pathway, or campground is within the sale area or the vicinity. Certain restrictions/specifications may be applicable including time restrictions. Access may be through other public land.

A timber sale contract for this lump sum, sealed bid timber sale will be awarded to the responsible bidder offering the highest sealed bid price. All units of volume listed below were estimated using the Inventory Manager computer program and the new Michigan taper model. Bids must be at or above the following advertised price for each product and species:

<u>PRODUCTS & SPECIES</u>	<u>ESTIMATED UNITS*</u>	<u>ADVERTISED PRICE</u>
Sawtimber		
Paper Birch	5.0 MBF	\$ 72.00 / MBF
Red Maple	34.6 MBF	\$ 152.00 / MBF
Sugar Maple	9.2 MBF	\$ 229.00 / MBF
Pulpwood		
Balsam Fir	362 Cords	\$ 11.85 / Cord
Black Spruce	457 Cords	\$ 13.10 / Cord
Mixed Aspen	220 Cords	\$ 20.10 / Cord
Mixed Hardwood	27 Cords	\$ 14.15 / Cord
Paper Birch	450 Cords	\$ 13.30 / Cord
Red Maple	1,978 Cords	\$ 14.15 / Cord
Sugar Maple	342 Cords	\$ 14.15 / Cord
Tamarack	5 Cords	\$ 13.00 / Cord
White Spruce	173 Cords	\$ 13.10 / Cord

* The total volume is statistically estimated within plus (+) or minus (-) 9.03 percent. There are an estimated 4,131 cords on this timber sale, plus or minus 373 cords at the 95% confidence level. The estimated units are final and not subject to adjustment. Prospective bidders are urged to examine this timber and to make their own estimates of quantity and quality.

BOND AND PAYMENT SCHEDULE:

1. A bond in the amount of \$6,395.08 to insure faithful performance of the conditions of the contract will be deposited by the successful bidder within 21 days of the sale award.
2. Cutting in any sale or unit without the required advance payment would be considered a trespass.
3. Total payment must be paid in advance or according to the following schedule :
 - (a) Ten percent (10%) of the sale value must be paid within 21 days of the sale award.
 - (b) The 10% down payment will be credited towards the first unit cut.
 - (c) Payment for each of the following units must be made before cutting begins in that unit:

PAYMENT UNIT NUMBER	PERCENT OF TOTAL SALE VALUE
01	12.2%
02	14.5%
03	12.8%
04	19.2%
05	2.5%
06	11.8%
07	3.8%
08	5.5%
09	4.6%
10	2.1%
11	0.7%
12	2.7%
13	7.6%

4. If no cutting takes place, the 10% down payment will not be refunded.
5. Operations on the contract issued will terminate on 06/30/2031.

SALE STATISTICS

Volumes were calculated in cubic feet using the Michigan taper model. Cubic foot volume includes all wood inside bark for the product indicated. For display purposes, cubic feet were converted to cords and MBF using a simple conversion factor, e.g. 79 cubic feet per cord and 185 cubic feet per MBF. The cubic foot volumes are precise; the cords and MBF volumes are not. Cubic foot volume cannot be directly converted to cords or boards with precision.

SALE VOLUMES

The total estimated sale volume may not equal the sum of the species/products due to the nature of statistical calculations associated with double sampling methodology.

VOLUME			STATISTICAL RANGE IN CORDS	
TOTAL CUBIC FEET	TOTAL CORDS	PERCENT ERROR	MINIMUM	MAXIMUM
326,361	4,131	9.03%	3,758	4,505

VDU VOLUMES

A VDU is a Volume Determination Unit. Volumes and their associated statistics are calculated at the VDU level and summarized to the sale level. There is often a one to one relationship between a VDU and a Payment Unit, but not always, depending on the cruise design. Refer to the VDU TO PAYMENT UNIT table.

VDU	VOLUME		PERCENT ERROR	RANGE IN CORDS	
	TOTAL CUBIC FEET	TOTAL CORDS		MINIMUM	MAXIMUM
1	62,143	787	24.37%	595	978
16	46,236	585	20.32%	466	704
20	163,582	2,071	13.30%	1,795	2,346
29	8,057	102	62.19%	39	165
30	13,082	166	35.14%	107	224
31	31,620	400	23.77%	305	495
45	1,640	21	74.78%	5	36
TOTAL:	326,361	4,131		3,313	4,950

VDU TO PAYMENT UNIT

When a VDU is associated with more than one Payment Unit (PU), the VDU volumes are assigned to the PU based on acres of the VDU within the PU.

VDU	VDU ACRES	PU	PU ACRES
TOTAL:			

DESCRIPTION OF TIMBER BY PU (PU)

PU	MARKET GROUP	PRODUCT	QUANTITY	UNIT	ACRES	ADVERTISE PRICE
1	Balsam Fir	Pulpwood	73	Cords	42.4	\$7,779.70
	Black Spruce		272	Cords		
	Mixed Hardwood		12	Cords		
	<i>Yellow Birch</i>		12	Cords		
	Paper Birch		29	Cords		
	Red Maple		193	Cords		
	Tamarack		5	Cords		
2	Paper Birch	Sawtimber	1.6	MBF	30.1	\$9,258.90
	Red Maple		0.9	MBF		
	Balsam Fir	Pulpwood	69	Cords		
	Black Spruce		43	Cords		
	Mixed Aspen		51	Cords		
	<i>B. T. Aspen</i>		23	Cords		
	<i>Quaking Aspen</i>		28	Cords		
	Paper Birch		128	Cords		
	Red Maple		311	Cords		
	White Spruce		38	Cords		
3	Paper Birch	Sawtimber	1.4	MBF	26.5	\$8,161.10
	Red Maple		0.8	MBF		
	Balsam Fir	Pulpwood	60	Cords		
	Black Spruce		38	Cords		
	Mixed Aspen		45	Cords		
	<i>B. T. Aspen</i>		20	Cords		
	<i>Quaking Aspen</i>		25	Cords		
	Paper Birch		113	Cords		
	Red Maple		274	Cords		
	White Spruce		34	Cords		
4	Paper Birch	Sawtimber	2.0	MBF	39.9	\$12,289.90
	Red Maple		1.2	MBF		
	Balsam Fir	Pulpwood	91	Cords		
	Black Spruce		57	Cords		
	Mixed Aspen		70	Cords		
	<i>B. T. Aspen</i>		31	Cords		
	<i>Quaking Aspen</i>		39	Cords		
	Paper Birch		169	Cords		
	Red Maple		411	Cords		
	White Spruce		51	Cords		
5	Red Maple	Sawtimber	0.8	MBF	4.4	\$1,591.50
	Balsam Fir	Pulpwood	2	Cords		
	Mixed Aspen		10	Cords		
	<i>Quaking Aspen</i>		10	Cords		
	Red Maple		86	Cords		
	Sugar Maple		2	Cords		
6	Red Maple	Sawtimber	9.1	MBF	35.0	\$7,550.60
	Sugar Maple		4.0	MBF		
	Balsam Fir	Pulpwood	1	Cords		
	Mixed Aspen		5	Cords		
	<i>Quaking Aspen</i>		5	Cords		
	Mixed Hardwood		2	Cords		
	<i>Ironwood</i>		2	Cords		
	Red Maple		161	Cords		
	Sugar Maple		190	Cords		
White Spruce	11	Cords				
7	Balsam Fir	Pulpwood	1	Cords	12.2	\$2,451.10
	Black Spruce		23	Cords		

DESCRIPTION OF TIMBER BY PU (PU), CON'T

PU	MARKET GROUP	PRODUCT	QUANTITY	UNIT	ACRES	ADVERTISE PRICE
7 con't	Mixed Aspen	Pulpwood	24	Cords		
	<i>Quaking Aspen</i>		24	<i>Cords</i>		
	Red Maple		117	Cords		
8	Red Maple	Sawtimber	5.3	MBF	6.5	\$3,516.60
	Sugar Maple		1.1	MBF		
	Balsam Fir	Pulpwood	16	Cords		
	Black Spruce		6	Cords		
	Mixed Aspen		4	Cords		
	<i>Quaking Aspen</i>		4	<i>Cords</i>		
	Mixed Hardwood		3	Cords		
	<i>Beech</i>		2	<i>Cords</i>		
	<i>Black Ash</i>		1	<i>Cords</i>		
	Paper Birch		3	Cords		
	Red Maple		101	Cords		
	Sugar Maple		34	Cords		
	White Spruce	9	Cords			
9	Red Maple	Sawtimber	4.5	MBF	5.5	\$2,971.05
	Sugar Maple		0.9	MBF		
	Balsam Fir	Pulpwood	13	Cords		
	Black Spruce		5	Cords		
	Mixed Aspen		3	Cords		
	<i>Quaking Aspen</i>		3	<i>Cords</i>		
	Mixed Hardwood		3	Cords		
	<i>Beech</i>		2	<i>Cords</i>		
	<i>Black Ash</i>		1	<i>Cords</i>		
	Paper Birch		2	Cords		
	Red Maple		86	Cords		
	Sugar Maple		29	Cords		
	White Spruce	8	Cords			
10	Red Maple	Sawtimber	2.0	MBF	2.5	\$1,328.65
	Sugar Maple		0.4	MBF		
	Balsam Fir	Pulpwood	6	Cords		
	Black Spruce		2	Cords		
	Mixed Aspen		1	Cords		
	<i>Quaking Aspen</i>		1	<i>Cords</i>		
	Mixed Hardwood		1	Cords		
	<i>Beech</i>		1	<i>Cords</i>		
	Paper Birch		1	Cords		
	Red Maple		39	Cords		
	Sugar Maple		13	Cords		
	White Spruce		4	Cords		
	11	Sugar Maple	Sawtimber	0.8		
Mixed Hardwood		Pulpwood	2	Cords		
<i>Ironwood</i>			1	<i>Cords</i>		
<i>Yellow Birch</i>			1	<i>Cords</i>		
Red Maple		8	Cords			
Sugar Maple	9	Cords				
12	Red Maple	Sawtimber	2.7	MBF	3.3	\$1,754.35
	Sugar Maple		0.5	MBF		
	Balsam Fir	Pulpwood	8	Cords		
	Black Spruce		3	Cords		
	Mixed Aspen		2	Cords		
	<i>Quaking Aspen</i>		2	<i>Cords</i>		
	Mixed Hardwood		1	Cords		
	<i>Beech</i>		1	<i>Cords</i>		

DESCRIPTION OF TIMBER BY PU (PU), CON'T

PU	MARKET GROUP	PRODUCT	QUANTITY	UNIT	ACRES	ADVERTISE PRICE
12 con't	Paper Birch	Pulpwood	1	Cords		
	Red Maple		51	Cords		
	Sugar Maple		17	Cords		
	White Spruce		5	Cords		
13	Red Maple	Sawtimber	7.3	MBF	9.0	\$4,845.25
	Sugar Maple		1.5	MBF		
	Balsam Fir	Pulpwood	22	Cords		
	Black Spruce		8	Cords		
	Mixed Aspen		5	Cords		
	<i>Quaking Aspen</i>		5	<i>Cords</i>		
	Mixed Hardwood		3	Cords		
	<i>Beech</i>		2	<i>Cords</i>		
	<i>Black Ash</i>		1	<i>Cords</i>		
	Paper Birch		4	Cords		
	Red Maple		140	Cords		
	Sugar Maple		48	Cords		
	White Spruce	13	Cords			
	TOTAL:			48.8		
TOTAL:			4,014	Cords		

Sale Specific Conditions & Requirements

Sale Name: Hiker's Paradise

Sale Number: 32-011-26 Seq#: 1

1 - Sale Area

1.2 - Boundaries

1.2.1 - Painted Boundaries (9/19)

The sale boundaries are marked and identified by blue, yellow, and red paint or are unmarked and identified by a road. Exterior sale boundary lines against private property are marked with blue paint. Exterior sale boundary lines against state are marked with red paint, with the exception of Payment Units 8, 10, 11, and 13, boundaries along Magnum and Sand Lake Road are unpainted and designated by Magnum and Sand Lake Roads. Interior Payment Unit boundaries are marked with yellow paint. Retention patches are marked with red paint; no harvesting activities may occur within these areas. The painted boundary line trees are not Included Timber and are to be protected unless marked with orange paint. Yellow painted trees designating an interior Payment Unit boundary are only to be cut when all surrounding Payment Units have been paid.

2 - Timber Specifications

2.1 - Included Timber

2.1.1 - Clearcut Unit(s) with Unmerchantable Trees (6/14)

Within Payment Unit(s) 1-5, 7, 12, and 13, cut all trees that are two (2) inches or more at DBH except:

Within Payment Unit (s) 1, do not cut cedar, hemlock, and white pine.

Within Payment Unit (s) 2-4 and 7, do not cut yellow birch, cedar, hemlock, and white pine.

Within Payment Unit (s) 5, do not cut cedar, hemlock, white pine, and trees marked with green paint above and below stump height.

Within Payment Unit (s) 12 and 13 do not cut cedar, hemlock, and yellow birch.

2.1.2 - Clearcut Unit(s) w/o Unmerchantable Trees (8/11)

Within Payment Unit(s) 8-10, cut all trees which meet minimum piece specifications in 2.2 Utilization, except do not cut hemlock, yellow birch, and white pine. Also, within Payment Unit (s) 10, do not cut trees with green painted rings that are marking the North Country Trail.

2.1.3 - Cut Tree Marked Unit(s) (12/08)

Within Payment Unit(s) 6 and 11, all trees are designated for cutting when marked with orange paint above and below stump height, regardless of merchantability. Also, within Payment Unit (s) 11, do not cut trees with green painted rings that are marking the North Country Trail.

3 - Payments

3.4 - Damaged Timber

3.4.1 - Damaged Timber (12/24)

General Condition and Requirement 3.4 Damaged Timber, defines liquidated damages for undesignated live merchantable trees which are cut or injured. In addition, extreme care should be taken to avoid damage to tree seedlings and saplings.

Within the Sale Area, if more than 25% of the tree seedlings or saplings (1/4" to 4.5" DBH) within a specified portion of the Sale Area are damaged, liquidated damages will be assessed at \$300 per acre for all acreage within that specified portion of the Sale Area that was damaged.

4 - Transportation

4.1 - Construction

4.1.3 - Slash and Earthen Piles (8/04)

Piles or windrows of earth along roads and landings that have been widened or constructed shall be leveled. Slash from road maintenance or construction, including stumps, shall be dispersed throughout the sale.

4.1.4 - Timber Removed for Construction (3/23)

Trees cut or damaged in the process of pre-approved road, landing, or skid trail construction will be decked in an area separate from other Designated Timber and not removed until measured by the Sale Administrator. Payment will be made at contract prices or average prices, if not on the contract.

4.1.6 - Road Construction (4/24)

Construction of new roads or improvements of existing roads shall be done in such a way as to minimize the environmental and visual impacts. Merchantable trees shall be cut and utilized unless otherwise directed. Non-merchantable trees shall be severed and laid flat on the ground. Slash shall be scattered, and not left in windrows and kept a minimum of 10 feet back from the road edge. Stumps shall be set upright, not left on edge, and be moved at least 10 feet back from the road edge. Disturbed soil shall be feathered into the woods and not left in berms or windrows. All new roads must be approved by the sale administrator.

4.1.7 - Road Closure (10/11)

All new roads built into the sale must be blocked to vehicle traffic upon completion of the sale. Overgrown roads that are reopened shall be considered new roads. Some existing roads may also need to be closed, see the Timber Sale Map for locations. In general, this will require constructing a four (4') foot high berm of stumps and logs covered with earth. Temporary berms may be required if no sale activity occurs for 30 or more consecutive days. Contact the sale administrator for specific details of design and placement.

4.2 - Maintenance

4.2.3 - Road maintenance (8/13)

The following road maintenance may be needed: Within 60 days of completion of hauling, or if no hauling occurs for 60 days, the road may need to be maintained and graded. This includes cleaning of drainage areas, grading, crowning and filling with gravel, if necessary. Damages will be assessed if grading/repair does not occur.

5 - Operations

5.1 - Notification

5.1.1 - Pre-sale Conference (10/25)

A pre-sale conference between the Purchaser and Sale Administrator is required prior to beginning any operations. The Unit Manager or his/her representative must be contacted at least 5 days in advance to schedule the conference.

5.2 - Conduct of Operations

5.2.1 - Slash

5.2.1.11 - Slash for Reforestation (3/21)

To facilitate reforestation, the Sale Area shall be left with slash evenly distributed. Bunched tops within the cutting area shall be broken up and scattered. Stumps shall be cut low to the ground. Processing sites shall not be left with a compacted layer of slash; tops from these sites shall be hauled back into the cut area and scattered.

5.2.3 - Operating Restrictions

5.2.3.1 - Operating Restrictions (9/11)

Within Payment Unit(s) 1-10, 12, and 13, unless changed by written agreement, cutting, skidding, and hauling are limited to frozen conditions, generally the period of 12/1 - 4/15. This restriction is due to wet soils and deer yard.

5.2.3.3 - Bark Slippage Restriction (3/09)

Within Payment Unit(s) 6 and 11, unless changed by written agreement, cutting and skidding are not permitted during the period of April 15 to July 15. This restriction is because of bark slippage.

5.2.32 - Decking/Landing Restoration (9/13)

All decking and landing areas must have the surface area restored to a condition equal to or better than before. This is to ensure the proper regeneration of the stand. Wood debris, chips and "cookies" from trimmings must be removed or scattered away from landing and loading areas and may not be windrowed on the edge.

5.2.38 - No Decking Against Live Trees (2/04)

Cut products may not be decked against unmarked or designated leave trees.

5.2.40 - Pathway Protection (10/10)

The North Country Trail is a hiking trail and is shown on the Timber Sale Map. Do not cut trees with green paint rings or damage posts marking the trail. Maintain a 20-foot-wide slash, debris, and rut free zone daily, using the pathway as the centerline. Do not run equipment down the pathway. Skidding across the trail may only occur in locations approved by the sale administrator.

5.2.41 - Snowmobile Trail Protection (9/11)

Trail 417 is a snowmobile trail and is shown on the Timber Sale Map. Do not cut or damage posts with orange trail markers or traffic control signs. If the trail is used, it must be maintained and restored to a condition equal to or better than before the sale. If the trail road is to be used for hauling during the snowmobile season, then a snow-covered base must be left on the trail and all trucking of forest products shall only occur Monday through Thursday during daylight hours. Maintain a 20-foot-wide slash, debris, and rut free zone daily using the snowmobile trail as the centerline. No decking of forest products will be permitted along the snowmobile trail. All stumps within 20 feet of the snowmobile trail must be cut at ground level.

5.4 - Soil Protection

5.4.2 - Skid Trails (2/04)

Skid trails up and down slopes should be avoided. If, however, this is unavoidable, these trails will be left in a non-erodible condition using water bars, logs, and slash. Placing of slash on these skid trails while logging is ongoing may alleviate need for any further action. At the direction of the Sale Administrator, seed, fertilizer, and mulch may also be required.

6 - Safety and Fire Prevention

6.2 - Signing

6.2.1 - Road Posting (10/20)

The Purchaser is responsible for posting and maintaining caution signs on Magnum Road, Deerton Sand Lake Road, and M-28 prior to beginning operations. The road must be posted at appropriate distances from the sale area to warn of logging activity and truck traffic. Signs must be removed when harvest operations are suspended or completed. The Purchaser will provide these signs.

6.2.2 - Snowmobile Trail Posting (10/20)

The Purchaser is responsible for posting and maintaining caution signs on Trail 417 prior to beginning operations during the snowmobile season (approximately December 1 to March 31). The trail must be posted at appropriate distances from the Sale Area to warn of logging activity and truck traffic. Signs must be removed when harvest operations are suspended or completed. The Purchaser will provide these signs.

6.2.3 - Recreational Trail Posting (10/20)

The Purchaser is responsible for posting and maintaining caution signs on the North Country Trail prior to beginning operations. The trail must be posted at appropriate distances from the sale area to warn of logging activity and truck traffic at both ends of the trail. Signs must be removed when harvest operations are suspended or completed. The Purchaser will provide these signs.



TIMBER SALE MAP

This information provided by authority of Part 525, 1994 PA 451, as amended.

Sale Number	Date	
32-011-26	05/21/2026	
Scale	Page	Of
1:24,000	1	2

Forest Management Unit	County	Mapped By: Siler
Gwynn Mgt Unit	Marquette	Cruised By: Siler & Gould

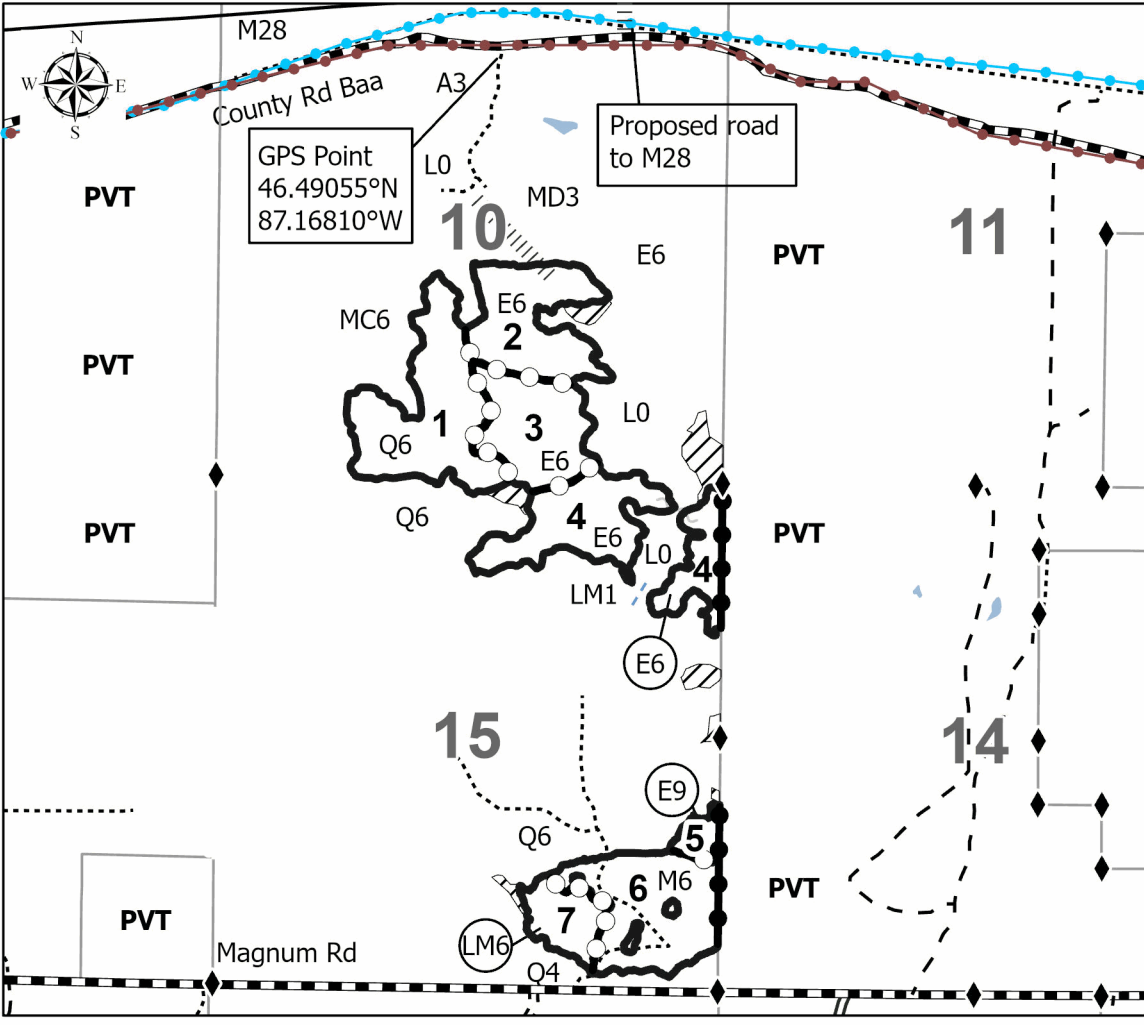
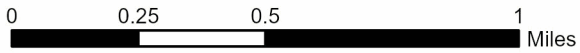
Township	Range	Section(s) and Subdivision(s)
47N	23W	NENW,N1/2NE,SENE,SE; Sec. 10 E1/2SW,SE; Sec. 12 SESE; Sec. 13 NENE,SESW,NESE,S1/2SE; Sec. 15

Cover Type			
A = Aspen	J = Jack Pine	O = Oak	U = Upland Brush
B = Paper Birch	K = Rock	P = Lowland Poplar	UM = Upland Mix Forest
C = Cedar	L = Lowland Brush	Q = Mixed Swamp Conifer	V = Bog or Marsh
D = Treed Bog	LM = Lowland Mix Forest	R = Red Pine	W = White Pine
E = Swamp Hardwoods	M = Maple, Beech, Birch	S = Black Spruce	X = Non Stocked
F = Spruce/Fir	MC = Mixed Conifer	T = Tamarack	Y = Sand
G = Grass	MD = Mixed Deciduous	Z = Water	
H = Hemlock	N = Marsh		

Density	
0 = Non Stocked	5 = Pole Timber Medium
1 = Seedling Sapling Poor	6 = Pole Timber Well
2 = Seedling Sapling Medium	7 = Saw Timber Poor
3 = Seedling Sapling Well	8 = Saw Timber Medium
4 = Pole Timber Poor	9 = Saw Timber Well

Payment Unit Number	Acres	Payment Unit Number	Acres	Payment Unit Number	Acres
1	42.4	6	35	11	2.4
2	30.1	7	12.2	12	3.3
3	26.5	8	6.5	13	9
4	39.9	9	5.5		
5	4.4	10	2.5		

Hiker's Paradise
Compartment
32282
32283
219.7 Acres



- Legend**
- Against State (Red)
 - Private Line (Blue)
 - Payment Unit (Yellow)
 - State Boundary
 - Retention Areas
 - Primary Forest Road
 - Forest Access Route
 - Administrative Access Only
 - Paved Road
 - Government Gravel/Dirt
 - Private Gravel/Dirt
 - Proposed Road
 - Lakes and Rivers
 - Streams
 - Survey Grade Corner
 - Hiking Trail
 - Snowmobile Trail





TIMBER SALE MAP

This information provided by authority of Part 525, 1994 PA 451, as amended.

Sale Number
32-011-26

Date
05/21/2026

Forest Management Unit	County	Mapped By: Siler
Gwynn Mgt Unit	Marquette	Cruised By: Siler & Gould

Scale	Page	Of
1:15,840	2	2

Township	Range	Section(s) and Subdivision(s)
47N	23W	NENW,N1/2NE,SENE,SE; Sec. 10 E1/2SW,SE; Sec. 12 SESE; Sec. 13 NENE,SES,NESE,S1/2SE; Sec. 15

Cover Type

A = Aspen	J = Jack Pine	O = Oak	U = Upland Brush
B = Paper Birch	K = Rock	P = Lowland Poplar	UM = Upland Mix Forest
C = Cedar	L = Lowland Brush	Q = Mixed Swamp Conifer	V = Bog or Marsh
D = Treed Bog	LM = Lowland Mix Forest	R = Red Pine	W = White Pine
E = Swamp Hardwoods	M = Maple, Beech, Birch	S = Black Spruce	X = Non Stocked
F = Spruce/Fir	MC = Mixed Conifer	T = Tamarack	Y = Sand
G = Grass	MD = Mixed Deciduous	Z = Water	
H = Hemlock	N = Marsh		

Density

0 = Non Stocked	5 = Pole Timber Medium
1 = Seedling Sapling Poor	6 = Pole Timber Well
2 = Seedling Sapling Medium	7 = Saw Timber Poor
3 = Seedling Sapling Well	8 = Saw Timber Medium
4 = Pole Timber Poor	9 = Saw Timber Well

Payment Unit Number	Acres	Payment Unit Number	Acres	Payment Unit Number	Acres
1	42.4	6	35	11	2.4
2	30.1	7	12.2	12	3.3
3	26.5	8	6.5	13	9
4	39.9	9	5.5		
5	4.4	10	2.5		

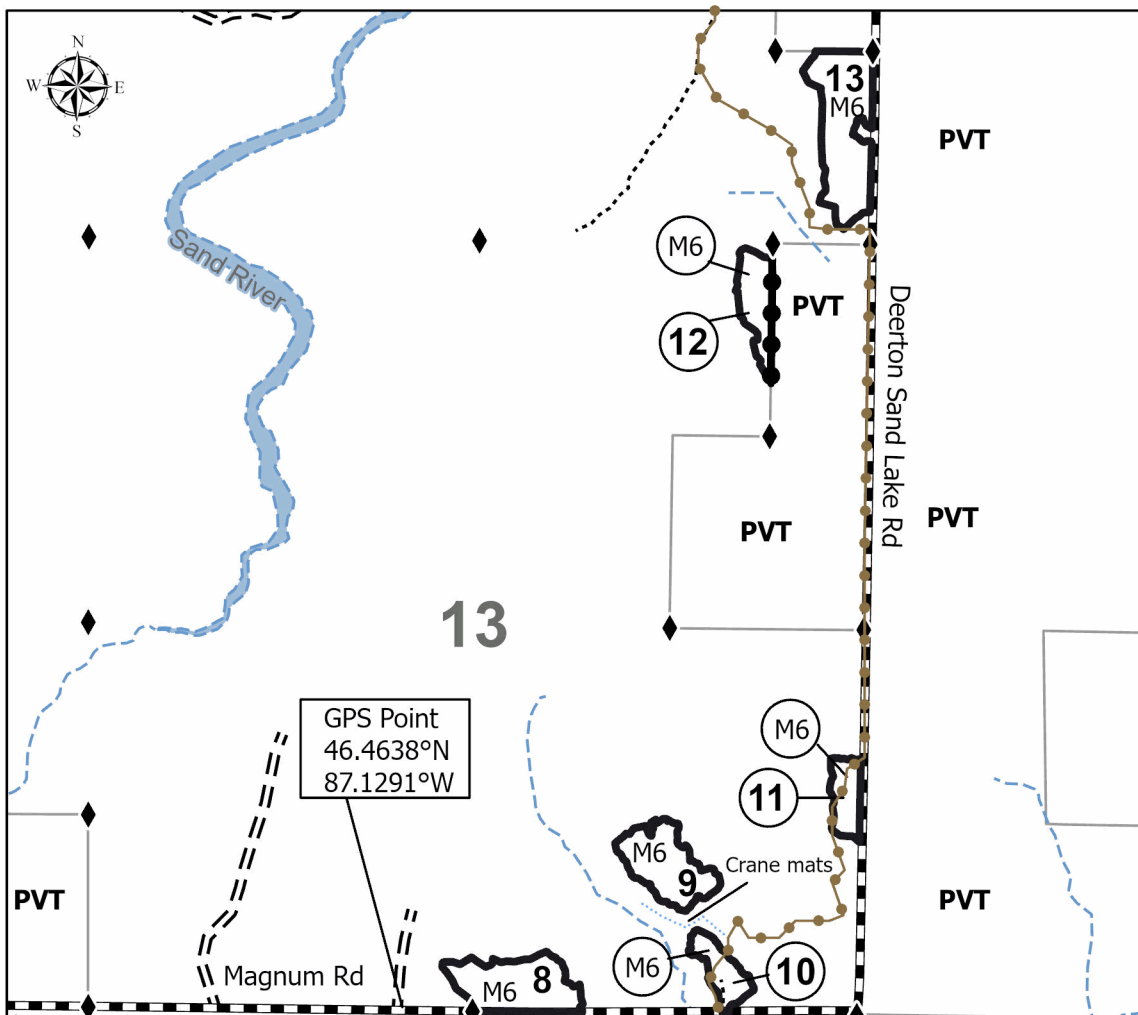
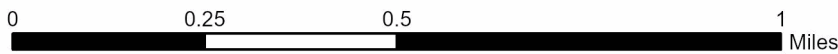
Hiker's Paradise

Compartments

32282

32283

219.7 Acres



Legend

- Against State (Red)
- Private Line (Blue)
- State Boundary
- Forest Access Route
- Administrative Access Only
- Government Gravel/Dirt
- Private Gravel/Dirt
- Drain
- Lakes and Rivers
- Streams
- Survey Grade Corner
- Hiking Trail

