



# TIMBER SALE MAP

This information provided by authority of Part 525, 1994 PA 451, as amended.

Forest Management Unit Atlanta		County Alpena	Mapped By D. Parris	Date 09/03/2021	Page 1	of 1
Township 32N	Range 06E	Section(s) and Subdivision(s) Sec 26 S1/2SW, Sec 34 NENE, Sec 35 NW, NE		Scale 1:15,840		

### Cover Type

A = Aspen	H = Hemlock	N = Marsh	U = Upland Brush
B = Paper Birch	J = Jack Pine	O = Oak	UM = Upland Mixed
C = Cedar	L = Lowland Brush	P = Lowland Poplar	V = Bog or Marsh
D = Treed Bog	LM = Lowland Mixed	Q = Mixed Swamp Conifer	W = White Pine
E = Swamp Hdwoods	M = Mpl, Bch, Brch	R = Red Pine	X = Non Stocked
F = Spruce Fir	MC = Mixed Conifer	S = Black Spruce	Z = Water
G = Grass	MD = Mixed Deciduous	T = Tamarack	

### Density

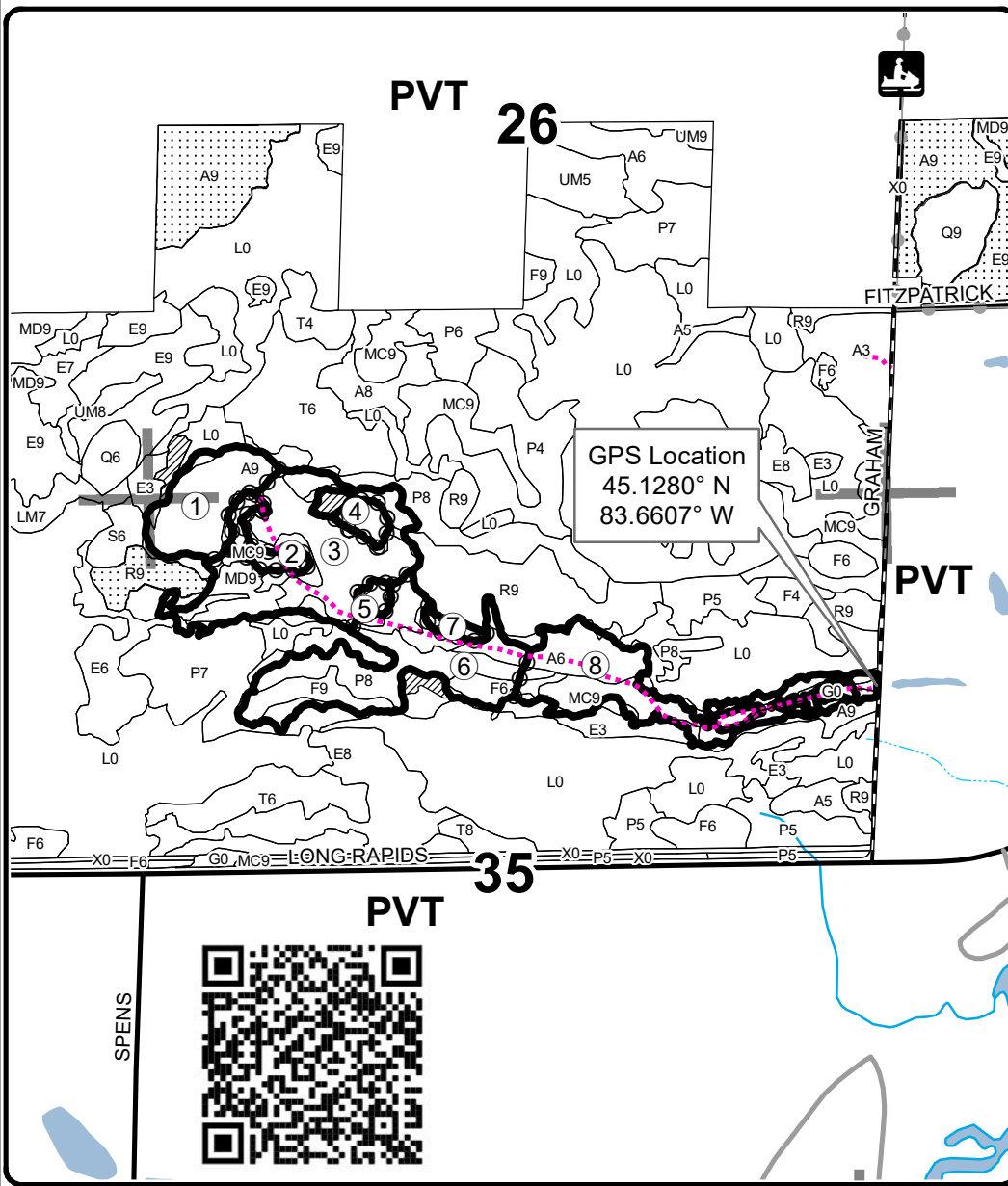
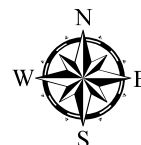
0 = Non Stocked	5 = Pole Timber Medium
1 = Seedling Sapling Poor	6 = Pole Timber Well
2 = Seedling Sapling Medium	7 = Saw Timber Poor
3 = Seedling Sapling Well	8 = Saw Timber Medium
4 = Pole Timber Poor	9 = Saw Timber Well

PU	Acres	PU	Acres
1	10.2	5	1.0
2	2.7	6	21.8
3	23.7	7	1.0
4	1.9	8	16.5

## Graham's Long Mile Mix

### Compartment 94

### 78.8 Acres



### Legend

- Against State (Red)
- Payment Unit (Yellow)
- Stand Boundaries
- Retention Area
- Nearby Timber Sales
- Payment Unit
- Recreational Trail
- Paved Road
- Gravel Road
- Private
- Temporary Management Access
- Intermittent Stream
- Perennial River
- Lakes and Rivers
- Section Corners

### Locator Map

1:150,000

