



TIMBER SALE MAP

This information provided by authority of Part 525, 1994 PA 451, as amended.

Forest Management Unit Atlanta		County Montmorency	Mapped By Barber	Date 08/16/2018	Page 1	of 2
Township 31N	Range 04E	Section(s) and Subdivision(s) 3: N2NW, SENW; 6: E2SE; 7:NENE; 8: N2NW;			Scale 1:15,840	

Cover Type

A = Aspen	H = Hemlock	N = Marsh	U = Upland Brush
B = Paper Birch	J = Jack Pine	O = Oak	UM = Upland Mixed
C = Cedar	L = Lowland Brush	P = Lowland Poplar	V = Bog or Marsh
D = Treed Bog	LM = Lowland Mixed	Q = Mixed Swamp Conifer	W = White Pine
E = Swamp Hdwoods	M = Mpl, Bch, Brch	R = Red Pine	X = Non Stocked
F = Spruce Fir	MC = Mixed Conifer	S = Black Spruce	Z = Water
G = Grass	MD = Mixed Deciduous	T = Tamarack	

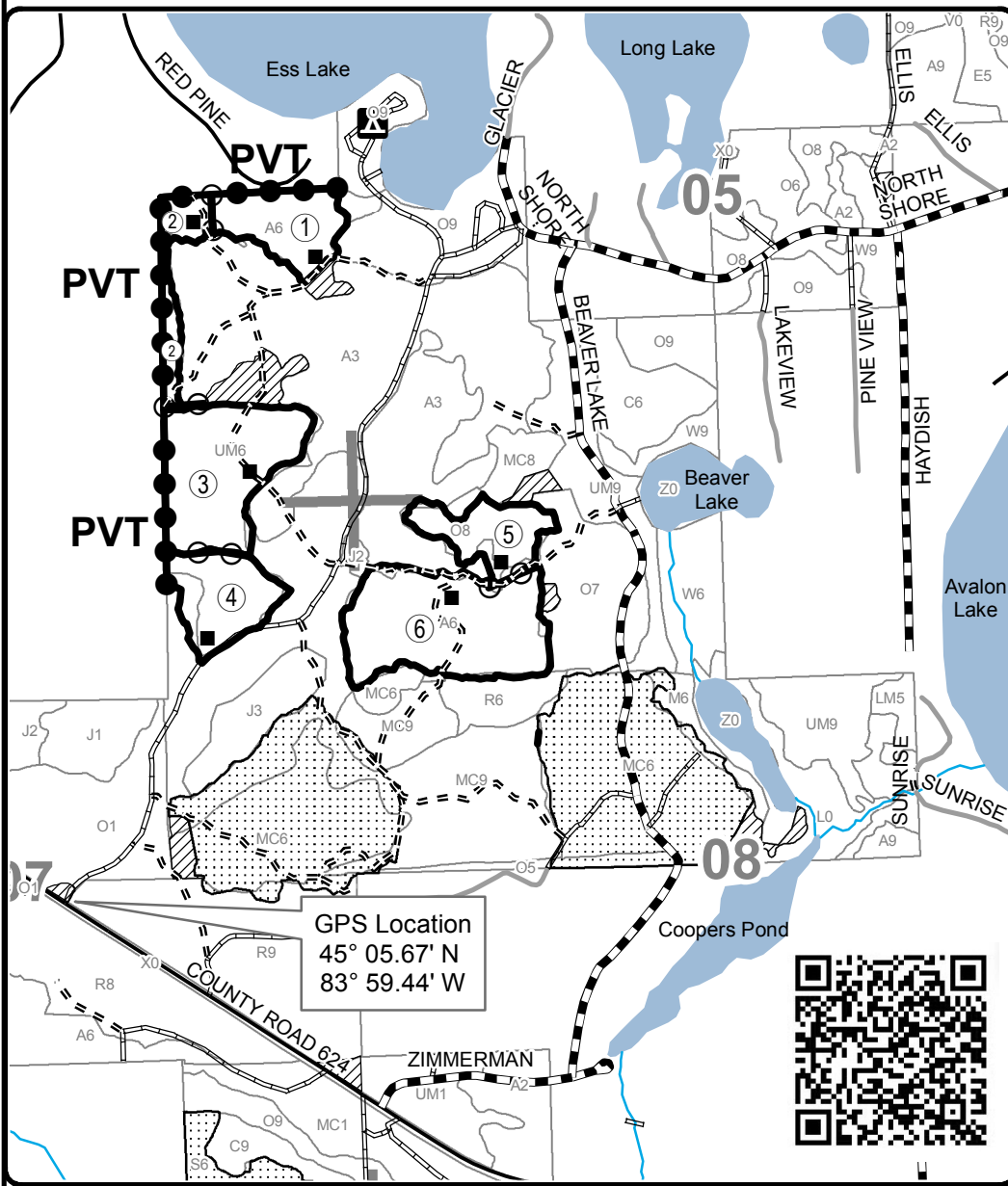
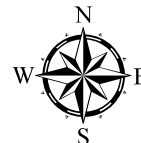
Density

0 = Non Stocked	5 = Pole Timber Medium
1 = Seedling Sapling Poor	6 = Pole Timber Well
2 = Seedling Sapling Medium	7 = Saw Timber Poor
3 = Seedling Sapling Well	8 = Saw Timber Medium
4 = Pole Timber Poor	9 = Saw Timber Well

PU	Acres	PU	Acres	PU	Acres
1	9.4	4	9.8	7	15.2
2	5.2	5	8.1		
3	18.7	6	23.2		

Loch Ess Monster

Compartment 055
89.6 Acres



Legend

- Against State (Red)
- Payment Unit (Yellow)
- Private Line (Blue)
- Retention Area
- PU_Label
- Landing
- Secondary Forest Road
- Paved Road
- Gravel Road
- County Road - Seasonal
- Private
- Temporary Management Access
- Perennial River
- Lakes and Rivers
- Nearby Timber Sales
- Stand Boundaries
- Section Corners

Locator Map 1:150,000

