

TIMBER SALE MAP

This information provided by authority of Part 525, 1994 PA 451, as amended.

Sale Number 54-025-24	Date 09/23/2024	
Scale 1:10,000	Page 1	Of 2

Forest Management Unit Atlanta Mgt Unit	County Presque Isle	Mapped By: T.Kubitskey
		Cruised By: T. Kubitskey

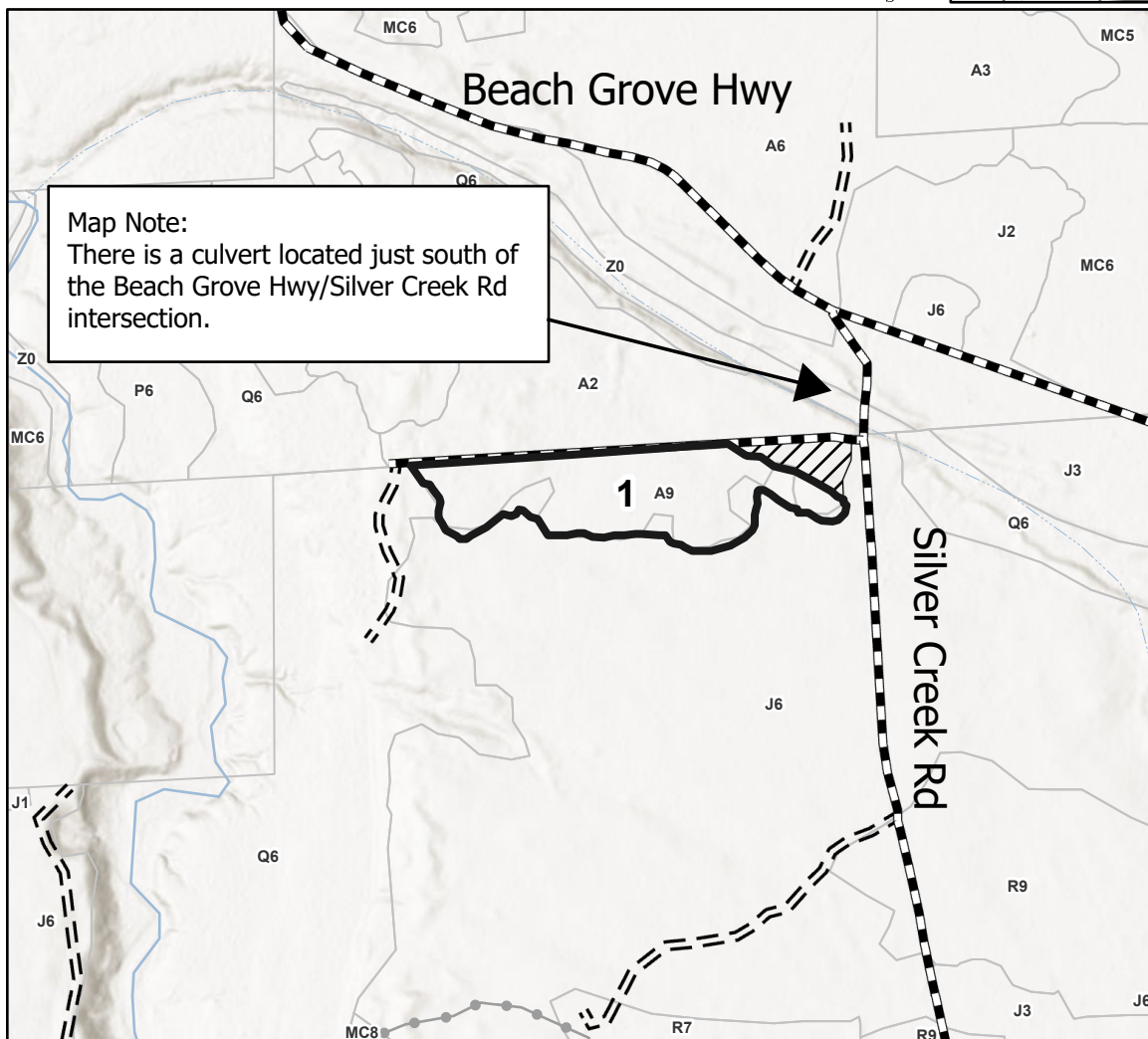
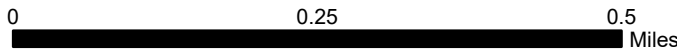
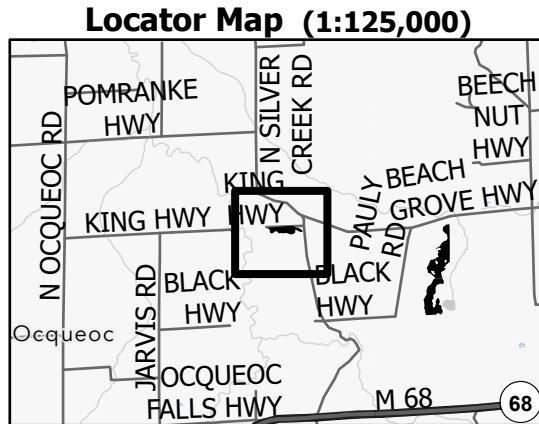
Township 35N	Range 03E	Section(s) and Subdivision(s) Sec. 13 E1/2NE,NESE,S1/2SE; Sec. 14 N1/2NW;
------------------------	---------------------	---

Cover Type			
A = Aspen	J = Jack Pine	O = Oak	U = Upland Brush
B = Paper Birch	K = Rock	P = Lowland Poplar	UM = Upland Mix Forest
C = Cedar	L = Lowland Brush	Q = Mixed Swamp Conifer	V = Bog or Marsh
D = Treed Bog	LM = Lowland Mix Forest	R = Red Pine	W = White Pine
E = Swamp Hardwoods	M = Maple, Beech, Birch	S = Black Spruce	X = Non Stocked
F = Spruce/Fir	MC = Mixed Conifer	T = Tamarack	Y = Sand
G = Grass	MD = Mixed Deciduous	Z = Water	
H = Hemlock	N = Marsh		

Density	
0 = Non Stocked	5 = Pole Timber Medium
1 = Seedling Sapling Poor	6 = Pole Timber Well
2 = Seedling Sapling Medium	7 = Saw Timber Poor
3 = Seedling Sapling Well	8 = Saw Timber Medium
4 = Pole Timber Poor	9 = Saw Timber Well

PU #	Acres
1	12.6
2	35.8
3	27.9

Antlerless Aspen
76.3 Acres
Compartment 148



Map Note:
There is a culvert located just south of the Beach Grove Hwy/Silver Creek Rd intersection.

Legend	
	Sale Boundary (Red)
	Stand
	Retention Areas (Red X's)
	Recreational Trail
	Intermittent Stream
	Perennial River
	Primary Forest Road
	Forest Access Route
	Administrative Access Only
	Paved Road
	Government Gravel/Dirt
	Private Gravel/Dirt

Use QR Code to open Map in App

