



TIMBER SALE MAP

This information provided by authority of Part 525, 1994 PA 451, as amended.

Forest Management Unit Atlanta		County Montmorency	Mapped By Natzke	Date 09/06/2023	Page 1	of 1
Township 32N	Range 02E, 03E	Section(s) and Subdivision(s) R02 E Sec. 1 SESE, Sec 12 NENE; R03E Sec.6 SWSW, Sec 7 NWNW, SESW, W2SE		Scale 1:15,840		
Cruised By Natzke						

Cover Type

A = Aspen	H = Hemlock	N = Marsh	U = Upland Brush
B = Paper Birch	J = Jack Pine	O = Oak	UM = Upland Mixed
C = Cedar	L = Lowland Brush	P = Lowland Poplar	V = Bog or Marsh
D = Treed Bog	LM = Lowland Mixed	Q = Mixed Swamp Conifer	W = White Pine
E = Swamp Hdwoods	M = Mpl, Bch, Brch	R = Red Pine	X = Non Stocked
F = Spruce Fir	MC = Mixed Conifer	S = Black Spruce	Z = Water
G = Grass	MD = Mixed Deciduous	T = Tamarack	

Density

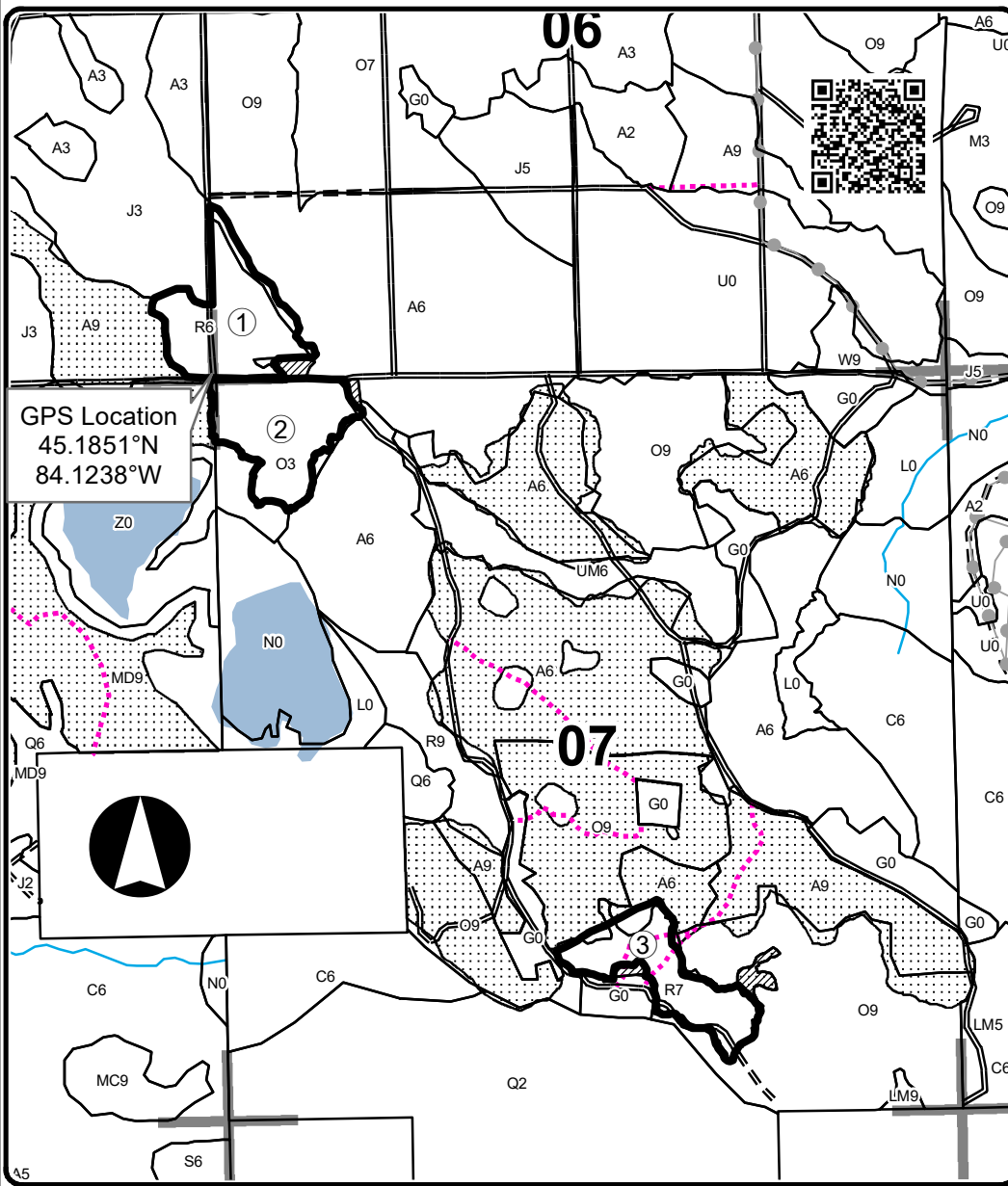
0 = Non Stocked	5 = Pole Timber Medium
1 = Seedling Sapling Poor	6 = Pole Timber Well
2 = Seedling Sapling Medium	7 = Saw Timber Poor
3 = Seedling Sapling Well	8 = Saw Timber Medium
4 = Pole Timber Poor	9 = Saw Timber Well

Big Rock Pine

Compartment 70

43.1 Acres

PU	Acres
1	15.7
2	14.7
3	12.7



Legend

- Against State (Red)
- Payment Unit
- Retention Area
- Stand Boundaries
- Nearby Timber Sales
- Recreational Trail
- Secondary Forest Road
- Forest Access Route
- Temporary Management Access
- Perennial River
- Lakes and Rivers
- Section Corners

Locator Map 1:150,000

