



TIMBER SALE MAP

This information provided by authority of Part 525, 1994 PA 451, as amended.

Sale Number 54-005-24	Date 05/19/2024
Scale 1:15,840	Page 2
	Of 2

Forest Management Unit Atlanta Mgt Unit	County Cheboygan	Mapped By: T. Kubitskey
		Cruised By: T. Kubitskey

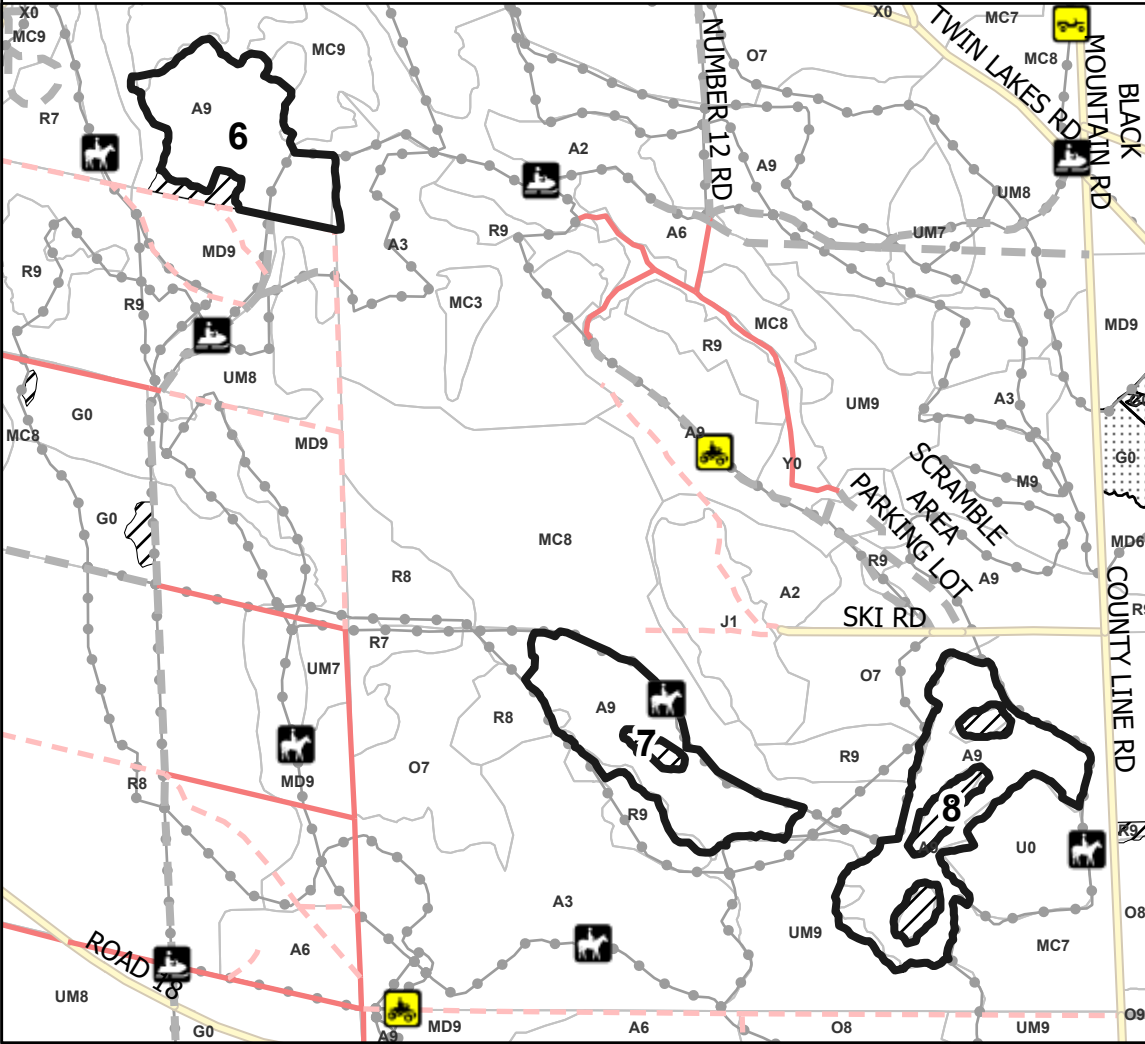
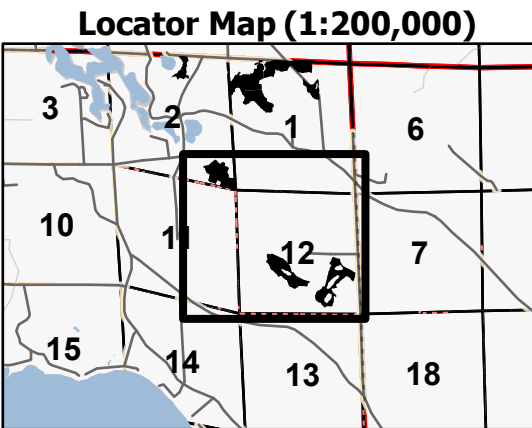
Township 36N	Range 01E	Section(s) and Subdivision(s) Sec. 1 NW,NWNE,SWSW; Sec. 12 N1/2SW,SESW,SE; Sec. 2 N1/2NE,S1/2SE;
------------------------	---------------------	---

Cover Type			
A = Aspen	J = Jack Pine	O = Oak	U = Upland Brush
B = Paper Birch	K = Rock	P = Lowland Poplar	UM = Upland Mix Forest
C = Cedar	L = Lowland Brush	Q = Mixed Swamp Conifer	V = Bog or Marsh
D = Treed Bog	LM = Lowland Mix Forest	R = Red Pine	W = White Pine
E = Swamp Hardwoods	M = Maple, Beech, Birch	S = Black Spruce	X = Non Stocked
F = Spruce/Fir	MC = Mixed Conifer	T = Tamarack	Y = Sand
G = Grass	MD = Mixed Deciduous	Z = Water	
H = Hemlock	N = Marsh		

Density	
0 = Non Stocked	5 = Pole Timber Medium
1 = Seedling Sapling Poor	6 = Pole Timber Well
2 = Seedling Sapling Medium	7 = Saw Timber Poor
3 = Seedling Sapling Well	8 = Saw Timber Medium
4 = Pole Timber Poor	9 = Saw Timber Well

PU #	Acres	PU #	Acres
1	7.5	5	7.9
2	17	6	23.2
3	26.1	7	24.4
4	22.9	8	28.1

Black Mountain Scramble
157.1 Acres



Legend

- Sale Boundary (Red)
- Retention Areas
- Nearby Timber Sales
- Stand
- Secondary Forest Road
- Forest Access Route
- Admin Access Route
- County Road
- Recreational Trail

Map Note: The only access into unit 6 is the Snowmobile Trail/ORV Route from the south. Access for Units 7 & 8 will be from Ski Rd.

Use QR Code to open Map in App

