



TIMBER SALE MAP

This information provided by authority of Part 525, 1994 PA 451, as amended.

Sale Number	Year
54 - 014	18

Forest Management Unit Atlanta		County Montmorency	Mapped By Matt Foster	Date 08/10/2018	Page 1	of 2
Township 29N	Range 02E	Section(s) and Subdivision(s) Sec. 22: NW1/4, NWNE. Sec. 15: S1/2SW, SWSE. Sec 24: N1/2NE, N1/2SE, SESE		Scale 1:15,840		

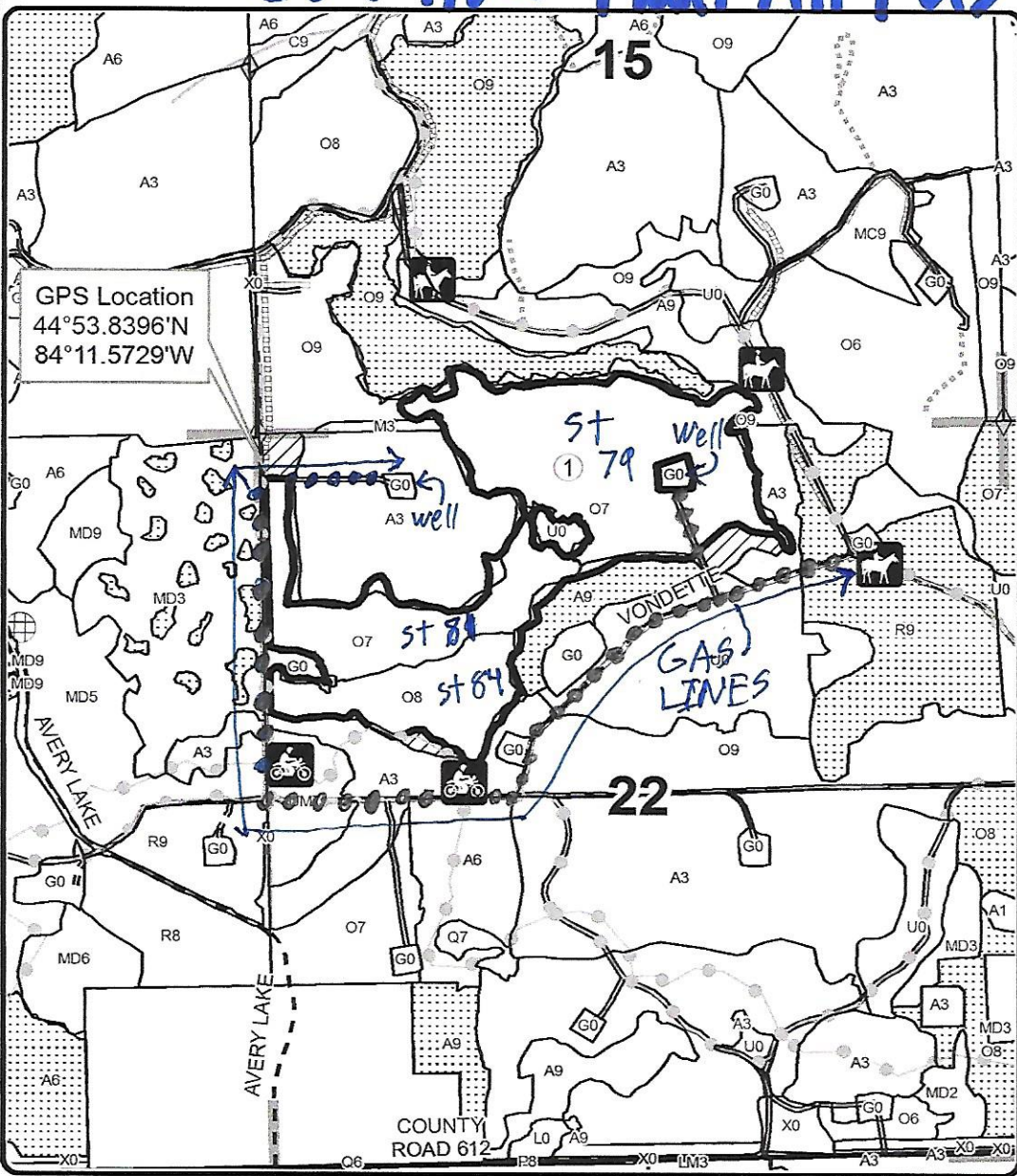
Cover Type				Density			
A = Aspen	H = Hemlock	N = Marsh	U = Upland Brush	0 = Non Stocked	5 = Pole Timber Medium		
B = Paper Birch	J = Jack Pine	O = Oak	UM = Upland Mixed	1 = Seedling Sapling Poor	6 = Pole Timber Well		
C = Cedar	L = Lowland Brush	P = Lowland Poplar	V = Bog or Marsh	2 = Seedling Sapling Medium	7 = Saw Timber Poor		
D = Tread Bog	LM = Lowland Mixed	Q = Mixed Swamp Conifer	W = White Pine	3 = Seedling Sapling Well	8 = Saw Timber Medium		
E = Swamp Hdwoods	M = Mpl. Bch, Brch	R = Red Pine	X = Non Stocked	4 = Pole Timber Poor	9 = Saw Timber Well		
F = Spruce Fir	MC = Mixed Conifer	S = Black Spruce	Z = Water				
G = Grass	MD = Mixed Deciduous	T = Tamarack					



PU	Acres
1	96.3
2	12.5
3	19.5

Bear Dog Oak
 Compartment 12
 128.3 Acres

C54-1152 Plant All PUs



Legend

- Sale Boundary (Red)
- Retention Area (Red)
- Nearby Timber Sales
- Stand Boundaries
- Secondary Forest Road
- Forest Access Route
- Paved Road
- Gravel Road
- County Road - Seasonal
- Temporary Management Access
- Recreational Trail
- Perennial River
- Section Corners
- Pipeline
- PU_Label

Locator Map
1:200,000

