



TIMBER SALE MAP

This information provided by authority of Part 525, 1994 PA 451, as amended.

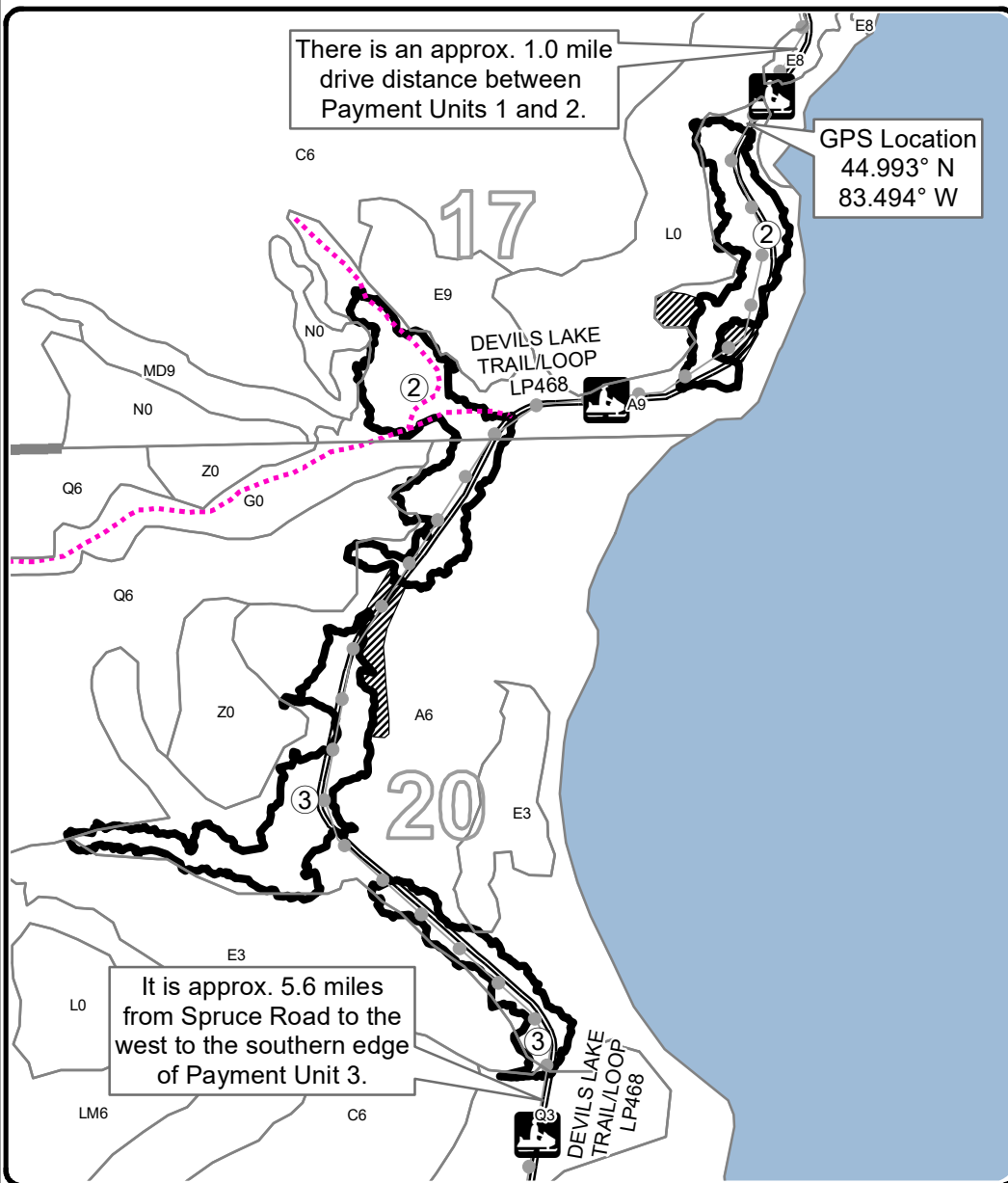
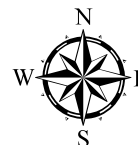
Forest Management Unit Atlanta		County Alpena	Mapped By D. Parris	Date 08/27/2019	Page 2	of 2
Township 30N	Range 08E	Section(s) and Subdivision(s) Sec 8 NESW, S1/2SW; Sec 17 NWNW, SESW, SWSE; Sec 20 NW		Scale 1:7,920		
Cover Type				Density		
A = Aspen	H = Hemlock	N = Marsh	U = Upland Brush	0 = Non Stocked	5 = Pole Timber Medium	
B = Paper Birch	J = Jack Pine	O = Oak	UM = Upland Mixed	1 = Seedling Sapling Poor	6 = Pole Timber Well	
C = Cedar	L = Lowland Brush	P = Lowland Poplar	V = Bog or Marsh	2 = Seedling Sapling Medium	7 = Saw Timber Poor	
D = Treed Bog	LM = Lowland Mixed	Q = Mixed Swamp Conifer	W = White Pine	3 = Seedling Sapling Well	8 = Saw Timber Medium	
E = Swamp Hdwoods	M = Mpl, Bch, Brch	R = Red Pine	X = Non Stocked	4 = Pole Timber Poor	9 = Saw Timber Well	
F = Spruce Fir	MC = Mixed Conifer	S = Black Spruce	Z = Water			
G = Grass	MD = Mixed Deciduous	T = Tamarack				

PU	Acres
1	9.7
2	9.4
3	8.4

Devils Ridge Mix

Compartment 89

27.5 Acres



Legend

- Against State (Red)
- Stand Boundaries
- ▨ Retention Area
- Payment Unit
- Secondary Forest Road
- ⋯ Temporary Management Access
- Recreational Trail
- Lakes
- Section Corners



Locator Map
1:200,000

