

**TIMBER SALE MAP**

This information provided by authority of Part 525, 1994 PA 451, as amended.

Sale Number

54-014-25

Date

09/30/2025

Forest Management Unit

Atlanta Mgt Unit

County

Montmorency

Mapped By: T. Kubitskey/Bundschuh/Vailencourt

Cruised By: T. Kubitskey

Scale

1:15,840

Page

1

Of

2

Township

31N / 32N

Range

01E

Section(s) and

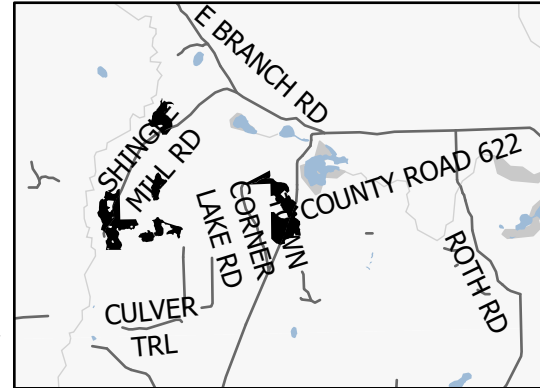
Subdivision(s) Sec. 1 S1/2NE,E1/2SE; Sec. 2 SENE,E1/2SW,NESE,S1/2SE; Sec. 35 NESE,S1/2SE;

Cover Type

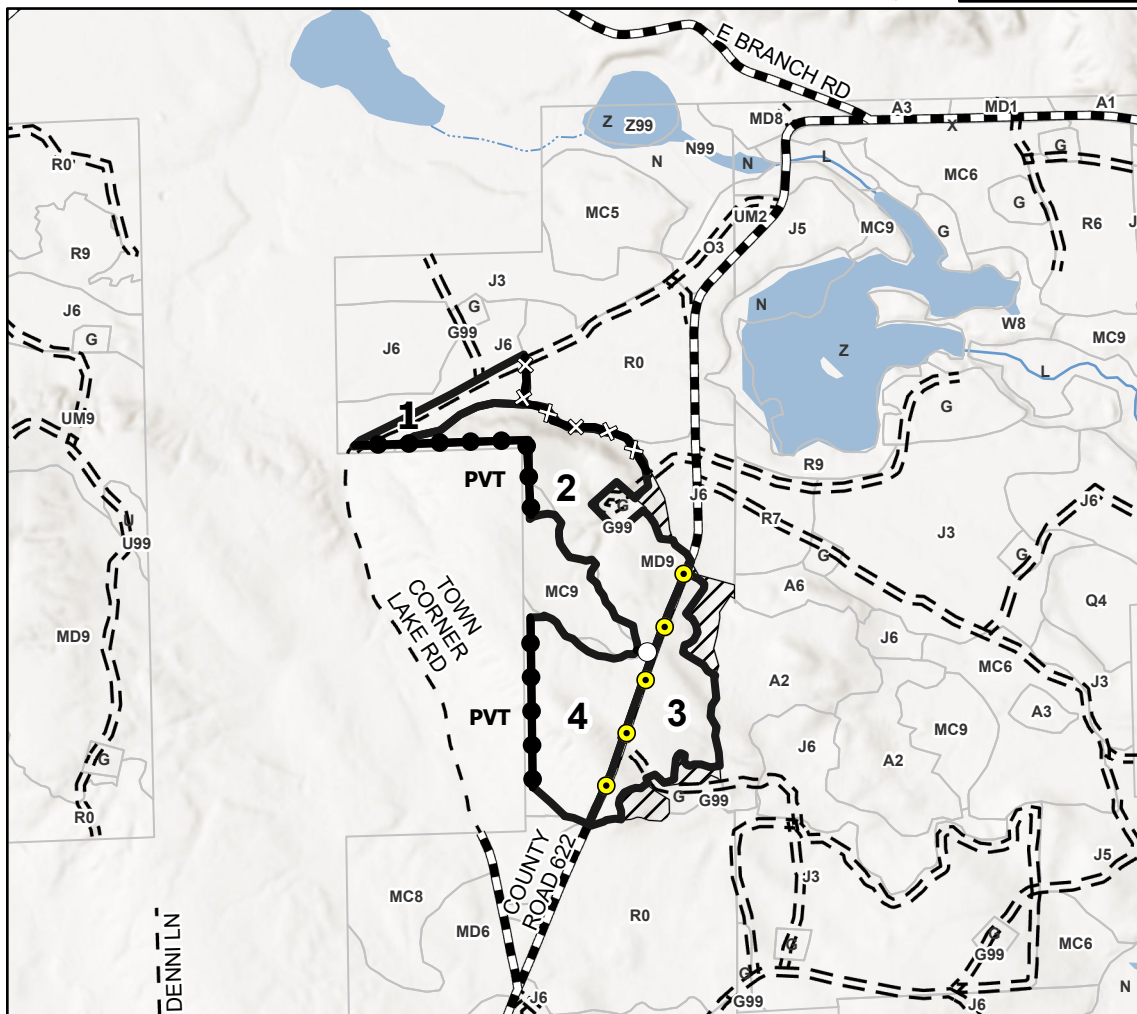
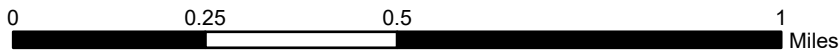
A = Aspen	J = Jack Pine	O = Oak	U = Upland Brush
B = Paper Birch	K = Rock	P = Lowland Poplar	UM = Upland Mix Forest
C = Cedar	L = Lowland Brush	Q = Mixed Swamp Conifer	V = Bog or Marsh
D = Treed Bog	LM = Lowland Mix Forest	R = Red Pine	W = White Pine
E = Swamp Hardwoods	M = Maple, Beech, Birch	S = Black Spruce	X = Non Stocked
F = Spruce/Fir	MC = Mixed Conifer	T = Tamarack	Y = Sand
G = Grass	MD = Mixed Deciduous	Z = Water	
H = Hemlock	N = Marsh		

Density

0 = Non Stocked	5 = Pole Timber Medium
1 = Seedling Sapling Poor	6 = Pole Timber Well
2 = Seedling Sapling Medium	7 = Saw Timber Poor
3 = Seedling Sapling Well	8 = Saw Timber Medium
4 = Pole Timber Poor	9 = Saw Timber Well

Locator Map 1:100,000

Payment Unit Number	Acres	Payment Unit Number	Acres
1	4.9	6	9.5
2	23.9	7	11.8
3	14	8	18.8
4	17.1	9	28.5
5	18.1	10	5.4

Elk Pasture Aspen**152.0 Acres****Legend**

- Sale Boundary (Red)
- Against State (Cover Type Change)
- Private Line (Blue)
- Payment Unit (Yellow)
- Payment Unit (Road)
- Recreational Trails
- Forest Access Route
- Government Gravel/Dirt
- Private Gravel/Dirt
- Retention Areas

Scan QR Code for
Map and Cruise Data