



# TIMBER SALE MAP

This information provided by authority of Part 525, 1994 PA 451, as amended.

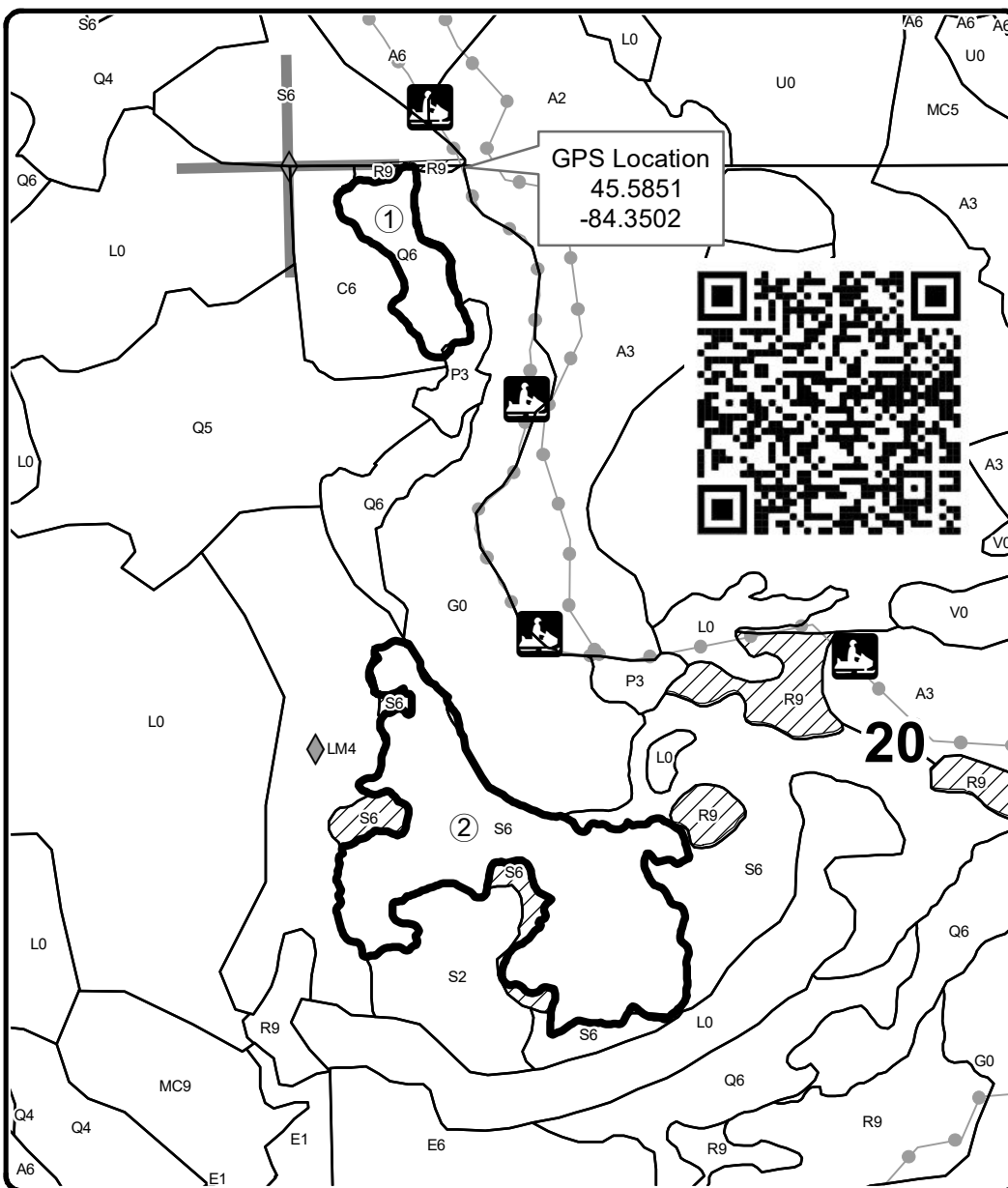
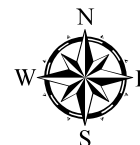
Forest Management Unit Atlanta Management Unit		County Cheboygan	Mapped By Michaud	Date 10/04/22	Page 1	of 1
Township 37N	Range 01E	Section(s) and Subdivision(s) Section 20 W1/2NW,N1/2SW		Scale 1:10,000		
<b>Cover Type</b>				<b>Density</b>		
A = Aspen	H = Hemlock	N = Marsh	U = Upland Brush	0 = Non Stocked	5 = Pole Timber Medium	
B = Paper Birch	J = Jack Pine	O = Oak	UM = Upland Mixed	1 = Seedling Sapling Poor	6 = Pole Timber Well	
C = Cedar	L = Lowland Brush	P = Lowland Poplar	V = Bog or Marsh	2 = Seedling Sapling Medium	7 = Saw Timber Poor	
D = Treed Bog	LM = Lowland Mixed	Q = Mixed Swamp Conifer	W = White Pine	3 = Seedling Sapling Well	8 = Saw Timber Medium	
E = Swamp Hdwoods	M = Mpl, Bch, Brch	R = Red Pine	X = Non Stocked	4 = Pole Timber Poor	9 = Saw Timber Well	
F = Spruce Fir	MC = Mixed Conifer	S = Black Spruce	Z = Water			
G = Grass	MD = Mixed Deciduous	T = Tamarack				

## PU Acres

1	4.9
2	26.7

# Europides Pants Spruce 2.0

Compartment 172  
31.6 Acres



**Legend**

- Retention Area
- Stand Boundaries
- Recreational Trail
- Field Grade Corners
- Section Corners

Locator Map  
1:200,000

