



# TIMBER SALE MAP

This information provided by authority of Part 525, 1994 PA 451, as amended.

Forest Management Unit <b>Atlanta</b>		County <b>Montmorency</b>	Mapped By <b>Natzke</b>	Date <b>09/21/2022</b>	Page <b>2</b>	of <b>2</b>
Township <b>32N</b>	Range <b>04E</b>	Section(s) and Subdivision(s) <b>Sec. 19 SWNE, Sec 30 NWNW, S2NW, N2SW, N2SE, Sec 33 SWSW, T03E Sec 25 NENE</b>		Scale <b>1:15,840</b>		

### Cover Type

A = Aspen	H = Hemlock	N = Marsh	U = Upland Brush
B = Paper Birch	J = Jack Pine	O = Oak	UM = Upland Mixed
C = Cedar	L = Lowland Brush	P = Lowland Poplar	V = Bog or Marsh
D = Treed Bog	LM = Lowland Mixed	Q = Mixed Swamp Conifer	W = White Pine
E = Swamp Hdwoods	M = Mpl, Bch, Brch	R = Red Pine	X = Non Stocked
F = Spruce Fir	MC = Mixed Conifer	S = Black Spruce	Z = Water
G = Grass	MD = Mixed Deciduous	T = Tamarack	

### Density

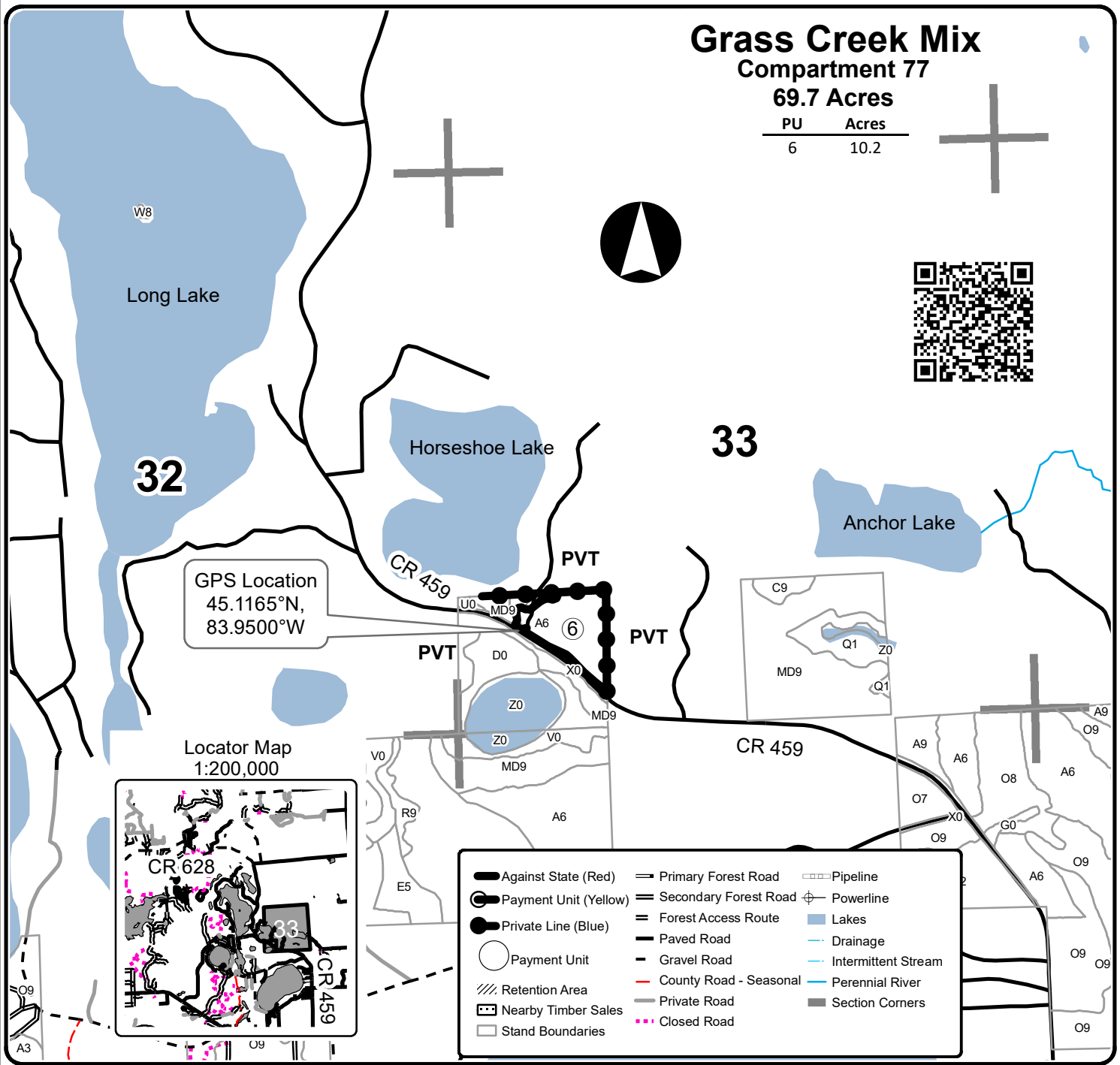
0 = Non Stocked	5 = Pole Timber Medium
1 = Seedling Sapling Poor	6 = Pole Timber Well
2 = Seedling Sapling Medium	7 = Saw Timber Poor
3 = Seedling Sapling Well	8 = Saw Timber Medium
4 = Pole Timber Poor	9 = Saw Timber Well

## Grass Creek Mix

### Compartment 77

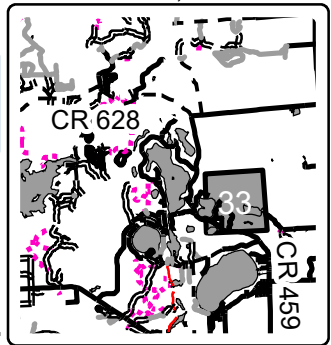
69.7 Acres

PU	Acres
6	10.2



GPS Location  
45.1165°N,  
83.9500°W

Locator Map  
1:200,000



Against State (Red)	Primary Forest Road	Pipeline
Payment Unit (Yellow)	Secondary Forest Road	Powerline
Private Line (Blue)	Forest Access Route	Lakes
Payment Unit	Paved Road	Drainage
Retention Area	Gravel Road	Intermittent Stream
Nearby Timber Sales	County Road - Seasonal	Perennial River
Stand Boundaries	Private Road	Section Corners
	Closed Road	

