



# TIMBER SALE MAP

This information provided by authority of Part 525, 1994 PA 451, as amended.

Forest Management Unit Atlanta		County Presque Isle	Mapped By J. St. Pierre	Date 1/25/2023	Page 1	of 1
Township 36N	Range 02E	Section(s) and Subdivision(s) Sec.27: NENW, S1/2NW, W1/2NE, SW, SWSE		Scale 1:15,840		

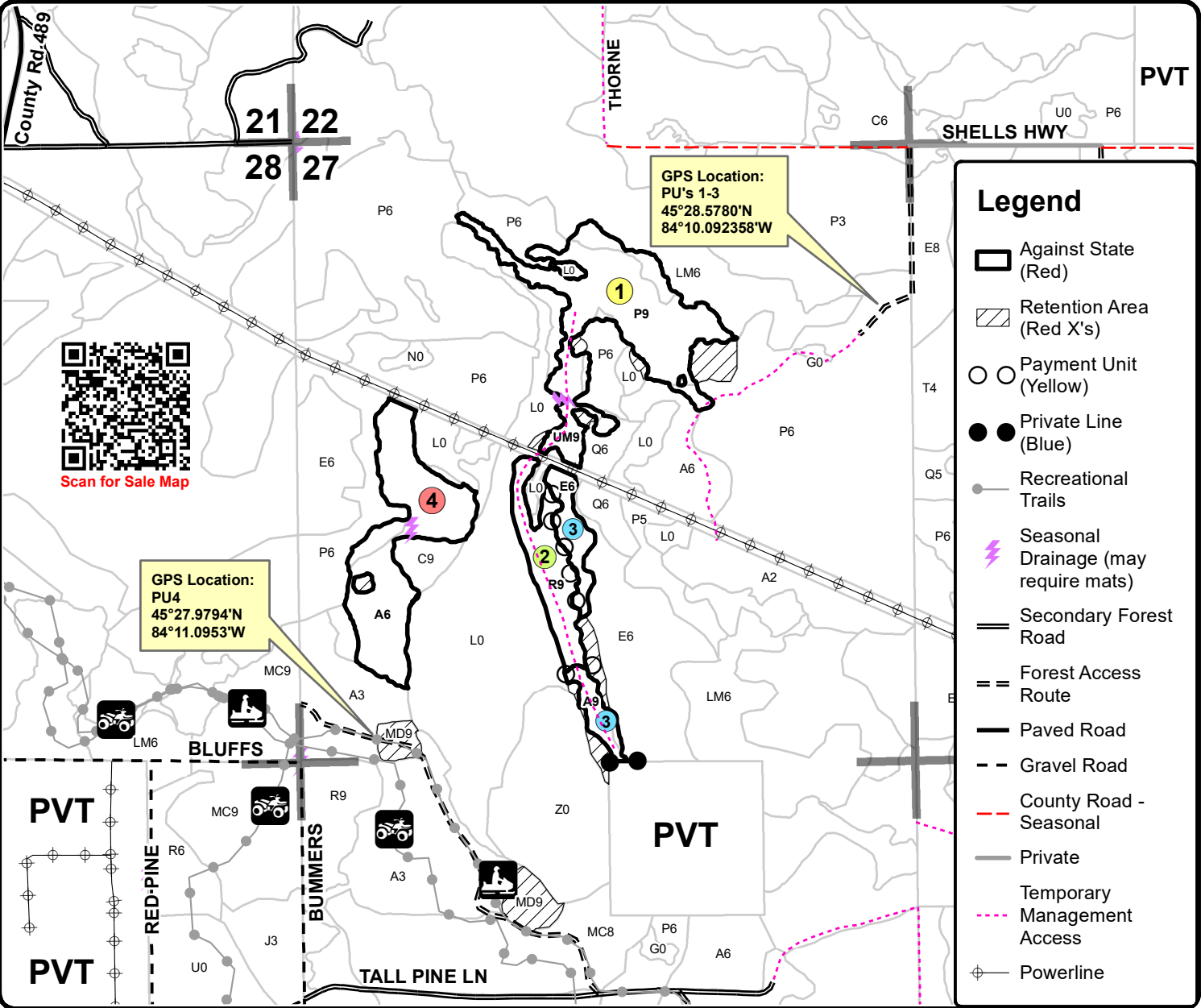
Cover Type				Density	
A = Aspen	H = Hemlock	N = Marsh	U = Upland Brush	0 = Non Stocked	5 = Pole Timber Medium
B = Paper Birch	J = Jack Pine	O = Oak	UM = Upland Mixed	1 = Seedling Sapling Poor	6 = Pole Timber Well
C = Cedar	L = Lowland Brush	P = Lowland Poplar	V = Bog or Marsh	2 = Seedling Sapling Medium	7 = Saw Timber Poor
D = Treed Bog	LM = Lowland Mixed	Q = Mixed Swamp Conifer	W = White Pine	3 = Seedling Sapling Well	8 = Saw Timber Medium
E = Swamp Hdwoods	M = Mpl, Bch, Brch	R = Red Pine	X = Non Stocked	4 = Pole Timber Poor	9 = Saw Timber Well
F = Spruce Fir	MC = Mixed Conifer	S = Black Spruce	Z = Water		
G = Grass	MD = Mixed Deciduous	T = Tamarack			

PU	Acres	PU	Acres
1	32.9	4	25.3
2	10.7		
3	8.6		

## Hard Bottom Mix

### Compartment 159

77.5 Acres



Scan for Sale Map

GPS Location:  
PU4  
45°27.9794'N  
84°11.0953'W

GPS Location:  
PU's 1-3  
45°28.5780'N  
84°10.092358'W

### Legend

- Against State (Red)
- Retention Area (Red X's)
- Payment Unit (Yellow)
- Private Line (Blue)
- Recreational Trails
- Seasonal Drainage (may require mats)
- Secondary Forest Road
- Forest Access Route
- Paved Road
- Gravel Road
- County Road - Seasonal
- Private
- Temporary Management Access
- Powerline

