

**TIMBER SALE MAP**

This information provided by authority of Part 525, 1994 PA 451, as amended.

Sale Number

**54-029-25**

Date

**09/03/2025**

Forest Management Unit

Atlanta Mgt Unit

County

Presque Isle

Mapped By: T. Kubitskey and WLD Staff

Cruised By: Kubitskey / Bundschuh

Scale

**1:15,840**

Page

**1**

Of

**1**

Township

**33N**

Range

**02E**

Section(s) and

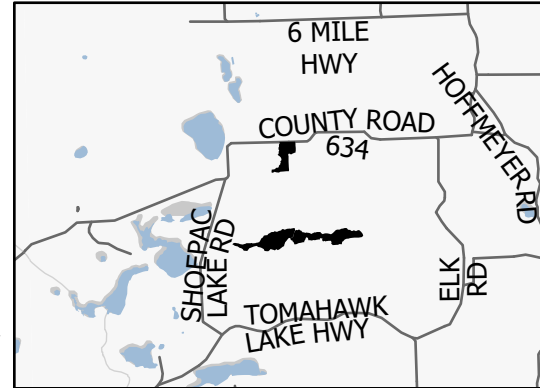
Subdivision(s) Sec. 11 SESW,SWSE; Sec. 13 W1/2SW; Sec. 14 NENW,NWNE,NESW,S1/2SW,SE;

**Cover Type**

A = Aspen	J = Jack Pine	O = Oak	U = Upland Brush
B = Paper Birch	K = Rock	P = Lowland Poplar	UM = Upland Mix Forest
C = Cedar	L = Lowland Brush	Q = Mixed Swamp Conifer	V = Bog or Marsh
D = Treed Bog	LM = Lowland Mix Forest	R = Red Pine	W = White Pine
E = Swamp Hardwoods	M = Maple, Beech, Birch	S = Black Spruce	X = Non Stocked
F = Spruce/Fir	MC = Mixed Conifer	T = Tamarack	Y = Sand
G = Grass	MD = Mixed Deciduous	Z = Water	
H = Hemlock	N = Marsh		

**Density**

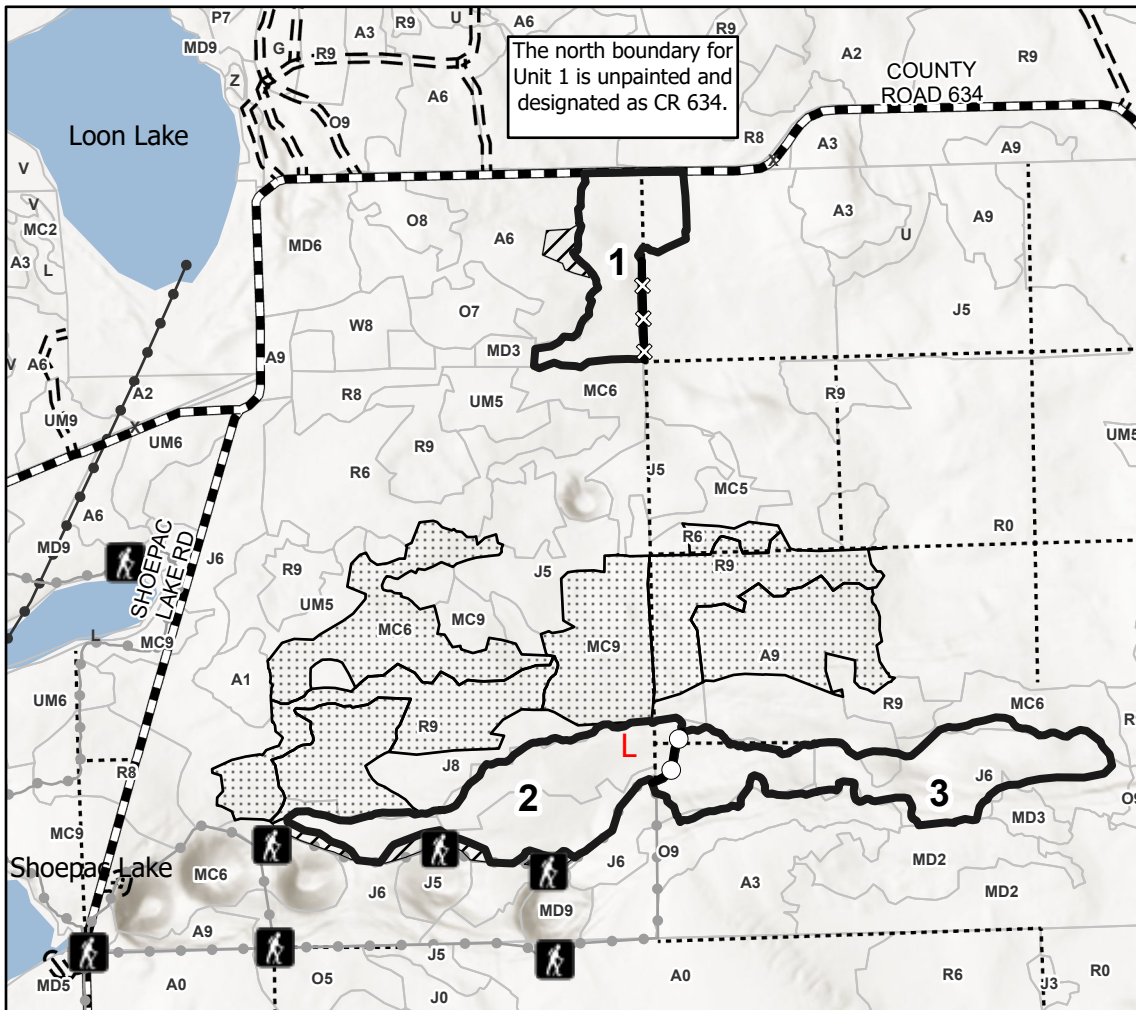
0 = Non Stocked	5 = Pole Timber Medium
1 = Seedling Sapling Poor	6 = Pole Timber Well
2 = Seedling Sapling Medium	7 = Saw Timber Poor
3 = Seedling Sapling Well	8 = Saw Timber Medium
4 = Pole Timber Poor	9 = Saw Timber Well

**Locator Map 1:100,000**

Payment Unit Number	Acres
1	16.7
2	26.6
3	28

**Ice Barren Jack Pine Salvage****71.3 Acres**

0 0.25 0.5 1 Miles

**Legend**

- Sale Boundary (Red)
- Against State (Cover Type Change)
- Payment Unit (Yellow)
- Powerline
- Recreational Trails
- Forest Access Route
- Administrative Access Only
- Government Gravel/Dirt
- Nearby Timber Sales
- Retention Areas

**Map Note:**

Access for Units 2 & 3 will be from the north utilizing the old Admin Access Route. Landing will be established for 2 & 3 somewhere near the 'L' icon on the map.

Scan for Avenza Map and Cruise Information

