



TIMBER SALE MAP

This information provided by authority of Part 525, 1994 PA 451, as amended.

Forest Management Unit

County

Mapped By Natzke

Date

Page

of

Atlanta

Alpena

Cruised By Natzke

05/13/2023

1

1

Township
32N

Range
05E

Section(s) and Subdivision(s)
Sec.32 N2SE; Sec.33 S2NW, N2SW, SESW, SWSE

Scale
1:15,840

Cover Type

A = Aspen	H = Hemlock	N = Marsh	U = Upland Brush
B = Paper Birch	J = Jack Pine	O = Oak	UM = Upland Mixed
C = Cedar	L = Lowland Brush	P = Lowland Poplar	V = Bog or Marsh
D = Treed Bog	LM = Lowland Mixed	Q = Mixed Swamp Conifer	W = White Pine
E = Swamp Hdwoods	M = Mpl, Bch, Brch	R = Red Pine	X = Non Stocked
F = Spruce Fir	MC = Mixed Conifer	S = Black Spruce	Z = Water
G = Grass	MD = Mixed Deciduous	T = Tamarack	

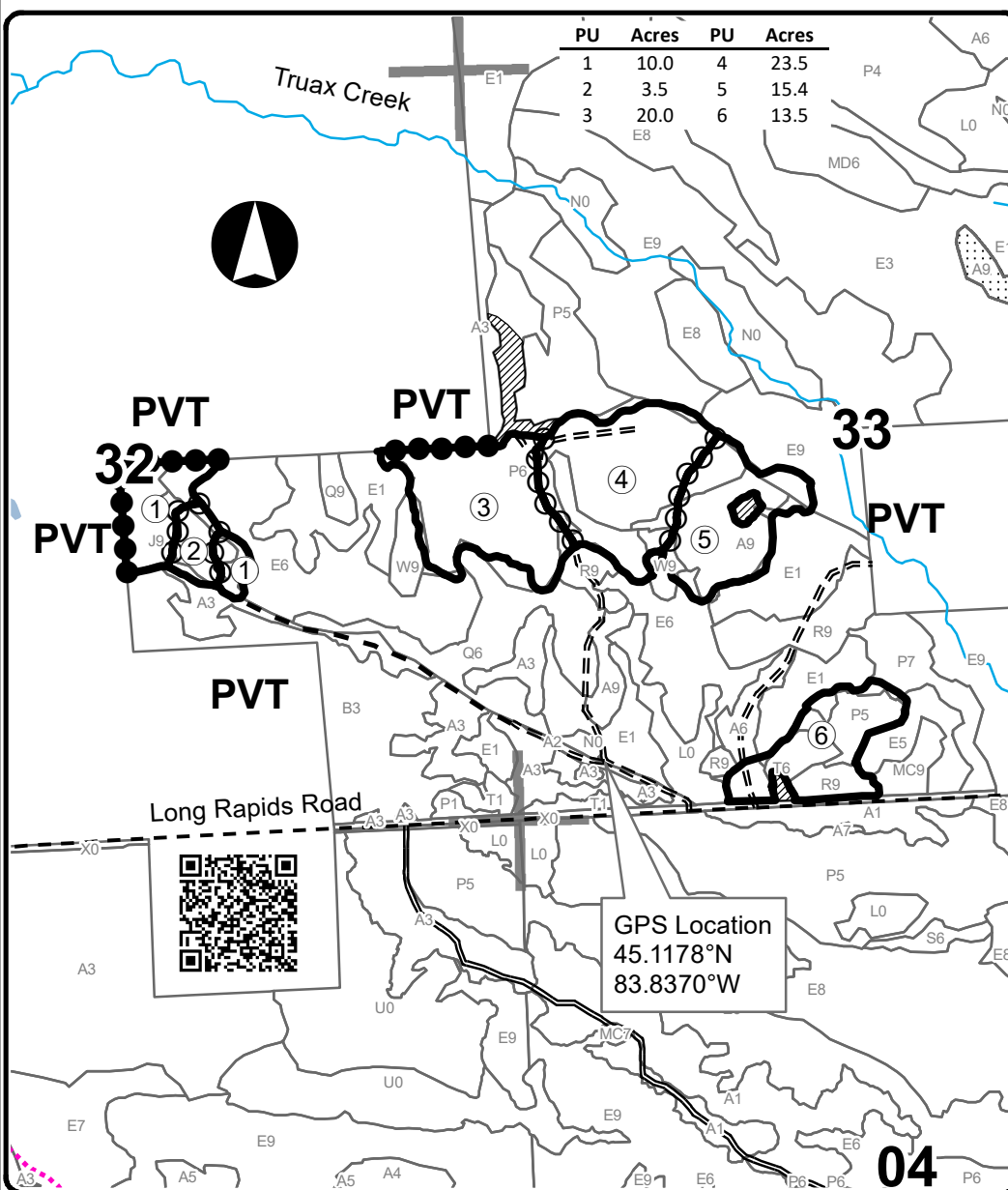
Density

0 = Non Stocked	5 = Pole Timber Medium
1 = Seedling Sapling Poor	6 = Pole Timber Well
2 = Seedling Sapling Medium	7 = Saw Timber Poor
3 = Seedling Sapling Well	8 = Saw Timber Medium
4 = Pole Timber Poor	9 = Saw Timber Well

Isn't It Swale

Compartment 109

87.2 Acres

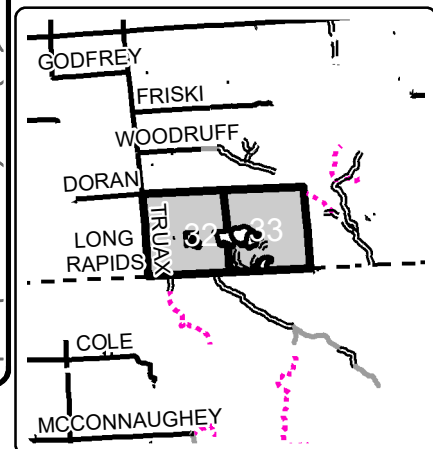


Legend

- Against State (Red)
- Payment Unit (Yellow)
- Private Line (Blue)
- Payment Unit
- Retention Area
- Nearby Timber Sales
- Stand Boundaries
- Probable Access
- Secondary Forest Road
- Forest Access Route
- Gravel Road
- Temporary Management Access
- Perennial River
- Lakes and Rivers
- Section Corners

Locator Map

1:150,000



GPS Location
45.1178°N
83.8370°W

