



TIMBER SALE MAP

This information provided by authority of Part 525, 1994 PA 451, as amended.

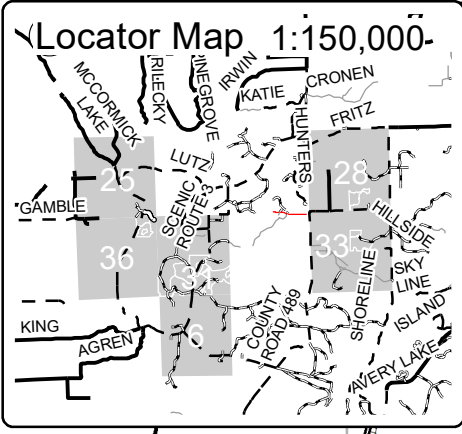
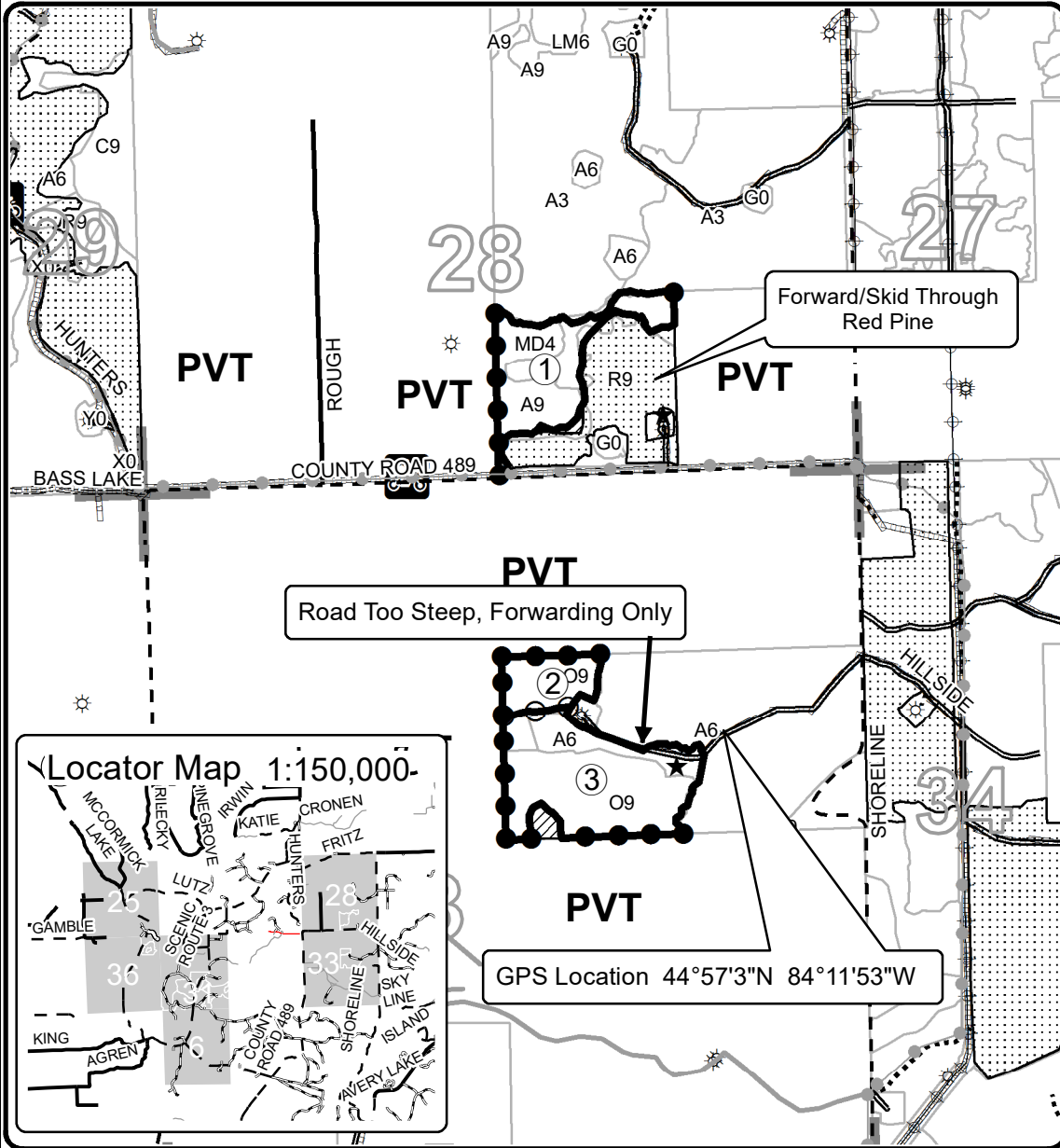
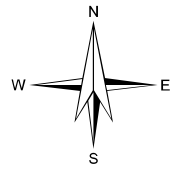
Forest Management Unit Atlanta Management Unit		County Montmorency	Mapped By Coy	Date 04/14/2021	Page 1	of 2
Township 29N & 30N	Range 01E & 02E	Section(s) and Subdivision(s) 25-SESE 36-NENE 28-W2SE 31-NESW,S2SW,SE 33-S2NE		Scale 1:15,840		
Cover Type				Density		
A = Aspen	H = Hemlock	N = Marsh	U = Upland Brush	0 = Non Stocked	5 = Pole Timber Medium	
B = Paper Birch	J = Jack Pine	O = Oak	UM = Upland Mixed	1 = Seedling Sapling Poor	6 = Pole Timber Well	
C = Cedar	L = Lowland Brush	P = Lowland Poplar	V = Bog or Marsh	2 = Seedling Sapling Medium	7 = Saw Timber Poor	
D = Treed Bog	LM = Lowland Mixed	Q = Mixed Swamp Conifer	W = White Pine	3 = Seedling Sapling Well	8 = Saw Timber Medium	
E = Swamp Hdwoods	M = Mpl, Bch, Brch	R = Red Pine	X = Non Stocked	4 = Pole Timber Poor	9 = Saw Timber Well	
F = Spruce Fir	MC = Mixed Conifer	S = Black Spruce	Z = Water			
G = Grass	MD = Mixed Deciduous	T = Tamarack				

PU	Acres	PU	Acres
1	14.6	6	18.8
2	16.7	7	27.4
3	23.8	8	31.5
4	29.6	9	14.3
5	28.3	10	13.6

McCormick and Shoreline Mix

Compartment 23

218.6 Acres



GPS Location 44°57'3"N 84°11'53"W

Legend

- Against State (Red)
- Private Line (Blue)
- Payment Unit (Yellow)
- ▨ Retention Area (Red)
- ▤ Nearby Timber Sales
- Stand Boundaries
- Payment Unit
- ★ Landing
- ⊙ Gas Well
- Section Corner
- Recreational Trail
- Secondary Forest Road
- == Forest Access Route
- Paved Road
- - Gravel Road
- == County Road - Seasonal
- Private Road
- ... Temporary Access
- Pipeline
- ⊕ Powerline

