



TIMBER SALE MAP

This information provided by authority of Part 525, 1994 PA 451, as amended.

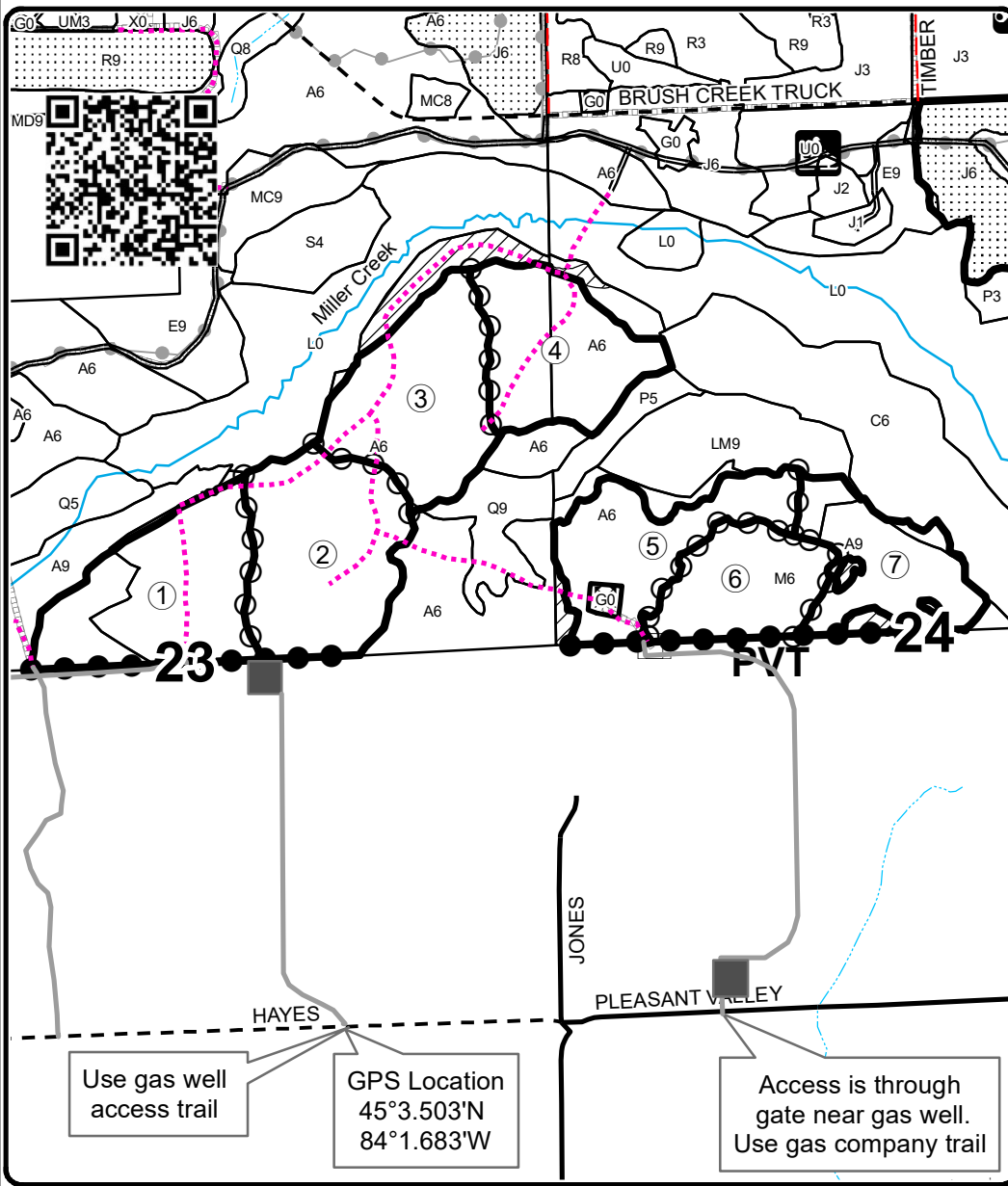
Forest Management Unit Atlanta		County Montmorency	Mapped By Collin Zaremba	Date 07/01/2020	Page 1	of 1
Township 31N	Range 03E	Section(s) and Subdivision(s) Sec 13: SWSW, Sec 14: SESE, Sec 23: SENW,NE, Sec 24: NWNW,S1/2NW,SWNE		Scale 1:15,840		
Cover Type			Density			
A = Aspen	H = Hemlock	N = Marsh	U = Upland Brush	0 = Non Stocked	5 = Pole Timber Medium	
B = Paper Birch	J = Jack Pine	O = Oak	UM = Upland Mixed	1 = Seedling Sapling Poor	6 = Pole Timber Well	
C = Cedar	L = Lowland Brush	P = Lowland Poplar	V = Bog or Marsh	2 = Seedling Sapling Medium	7 = Saw Timber Poor	
D = Treed Bog	LM = Lowland Mixed	Q = Mixed Swamp Conifer	W = White Pine	3 = Seedling Sapling Well	8 = Saw Timber Medium	
E = Swamp Hdwoods	M = Mpl, Bch, Brch	R = Red Pine	X = Non Stocked	4 = Pole Timber Poor	9 = Saw Timber Well	
F = Spruce Fir	MC = Mixed Conifer	S = Black Spruce	Z = Water			
G = Grass	MD = Mixed Deciduous	T = Tamarack				

PU	Acres	PU	Acres
1	32.4	5	23.3
2	33.8	6	19.2
3	30.3	7	20.6
4	25.6		

Miller Moat Aspen and HW

Compartment 48 and 49

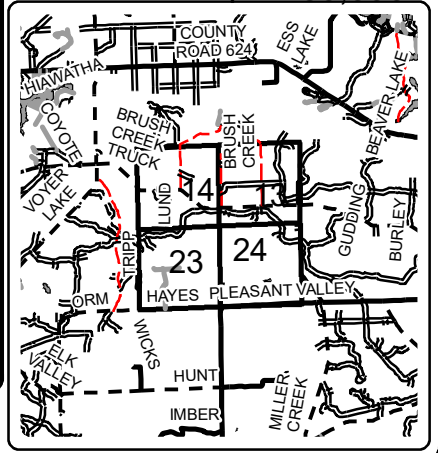
185.2 Acres



Legend

- Against State (Red)
- Payment Unit (Yellow)
- Private Line (Blue)
- Stand Boundaries
- ▨ Nearby Timber Sales
- ▧ Retention Area
- Secondary Forest Road
- Paved Road
- - Gravel Road
- - - County Road - Seasonal
- Private Road
- ⋯ Temporary Management Access
- Recreational Trail
- ⋯ Intermittent Stream
- Perennial River
- Payment Unit Label
- Gas wells on private land
- ▭ Pipeline

Locator Map 1:150,000



Use gas well access trail

GPS Location
45°3.503'N
84°1.683'W

Access is through gate near gas well. Use gas company trail

