



TIMBER SALE MAP

This information provided by authority of Part 525, 1994 PA 451, as amended.

Sale Number	Year
54-039	23

Forest Management Unit Atlanta Management Unit	County Montmorency County	Mapped By Michaud	Date 09/25/23	Page 1	of 1
Township 31N	Range 01E	Section(s) and Subdivision(s) Sec 27: NESW,NWSE,S1/2SE Sec 34: SENW,N1/2NE,SWNE,N1/2SE	Scale 1:15,840		

Cover Type

A = Aspen	H = Hemlock	N = Marsh	U = Upland Brush
B = Paper Birch	J = Jack Pine	O = Oak	UM = Upland Mixed
C = Cedar	L = Lowland Brush	P = Lowland Poplar	V = Bog or Marsh
D = Treed Bog	LM = Lowland Mixed	Q = Mixed Swamp Conifer	W = White Pine
E = Swamp Hdwoods	M = Mpl, Bch, Brch	R = Red Pine	X = Non Stocked
F = Spruce Fir	MC = Mixed Conifer	S = Black Spruce	Z = Water
G = Grass	MD = Mixed Deciduous	T = Tamarack	

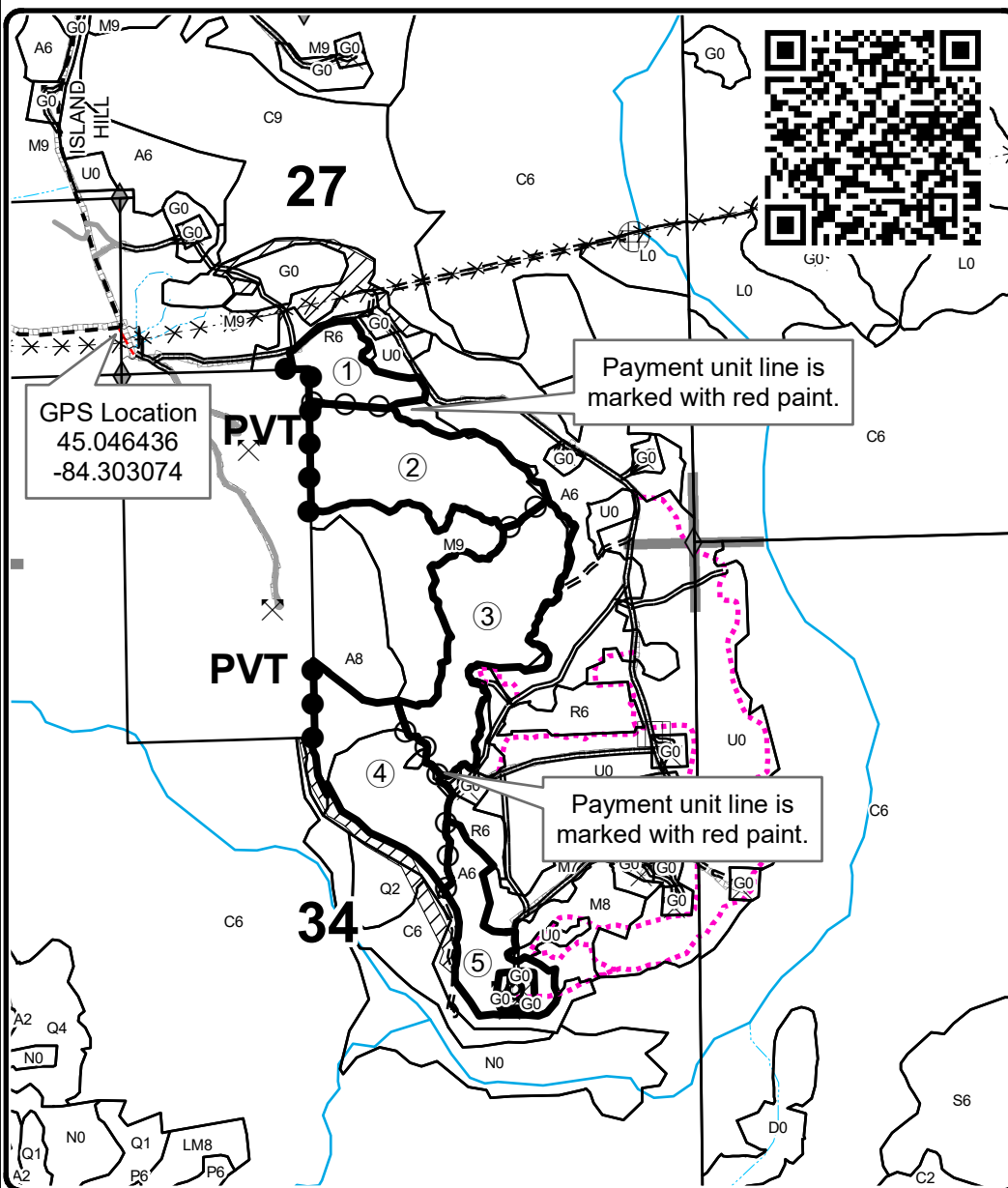
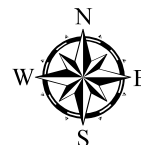
Density

0 = Non Stocked	5 = Pole Timber Medium
1 = Seedling Sapling Poor	6 = Pole Timber Well
2 = Seedling Sapling Medium	7 = Saw Timber Poor
3 = Seedling Sapling Well	8 = Saw Timber Medium
4 = Pole Timber Poor	9 = Saw Timber Well

PU	Acres	PU	Acres
1	7.8	4	19.2
2	22.8	5	9.9
3	24.1		

Old Baldy Mix

Compartment 37
83.8 Acres



Legend

- Sale Boundary (Red)
- Payment Unit (Yellow)
- Private Line (Blue)
- Stand Boundaries
- Retention Area
- Field Grade Corners
- Secondary Forest Road
- Forest Access Route
- Gravel Road
- County Road - Seasonal
- Private
- Temporary Management Access
- Drain
- Intermittent Stream
- Perennial River
- Section Corners

Locator Map 1:80,000

