



TIMBER SALE MAP

This information provided by authority of Part 525, 1994 PA 451, as amended.

Sale Number 54-015-26	Date 07/02/2026	
Scale 1:6,000	Page 1	Of 1

Forest Management Unit Atlanta Mgt Unit	County Montmorency	Mapped By: Kody Beesley
		Cruised By: Kody Beesley

Township 29N	Range 02E	Section(s) and Subdivision(s) Sec. 21 SENE,N1/2SE;
------------------------	---------------------	--

Cover Type			
A = Aspen	J = Jack Pine	O = Oak	U = Upland Brush
B = Paper Birch	K = Rock	P = Lowland Poplar	UM = Upland Mix Forest
C = Cedar	L = Lowland Brush	Q = Mixed Swamp Conifer	V = Bog or Marsh
D = Treed Bog	LM = Lowland Mix Forest	R = Red Pine	W = White Pine
E = Swamp Hardwoods	M = Maple, Beech, Birch	S = Black Spruce	X = Non Stocked
F = Spruce/Fir	MC = Mixed Conifer	T = Tamarack	Y = Sand
G = Grass	MD = Mixed Deciduous	Z = Water	
H = Hemlock	N = Marsh		

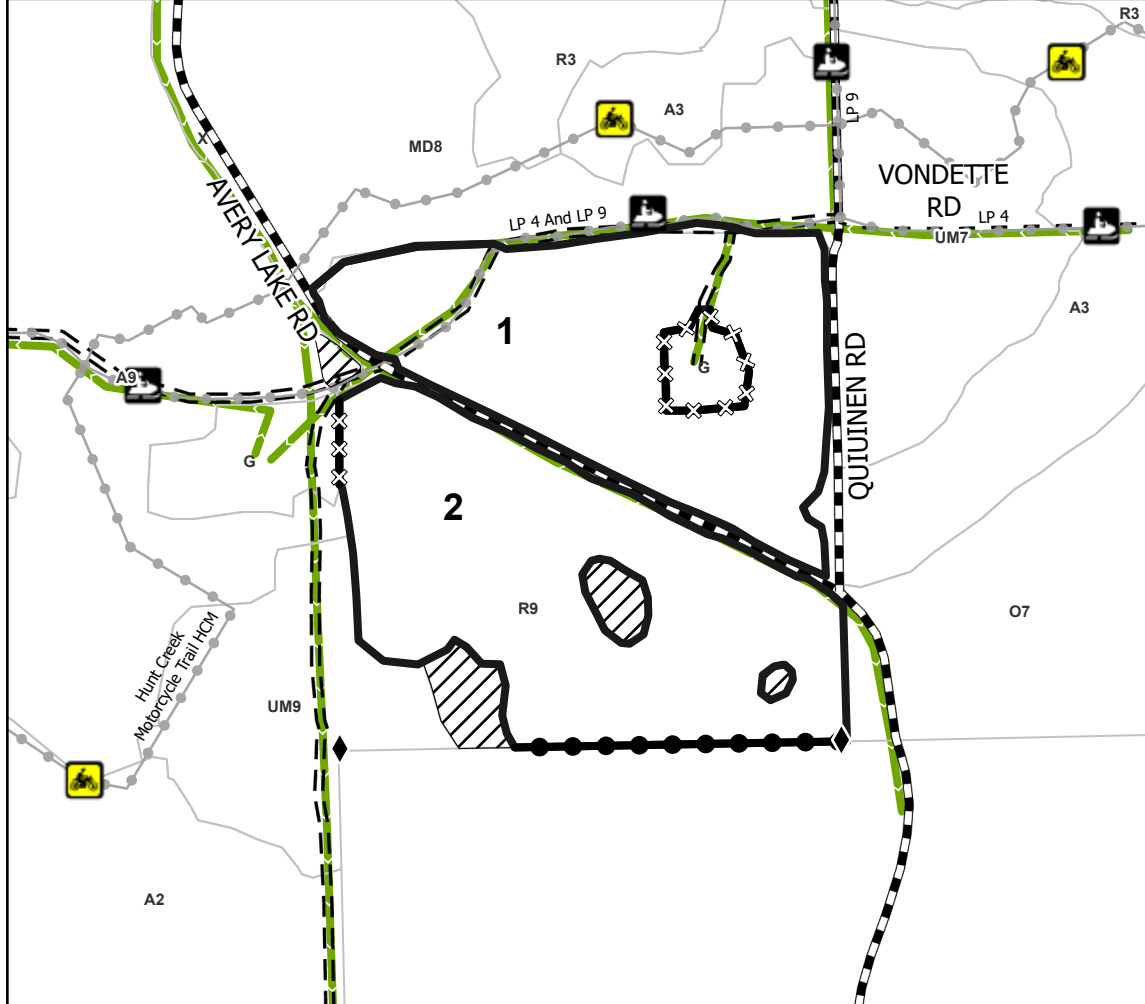
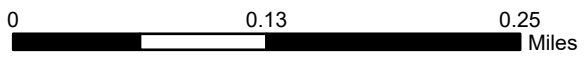
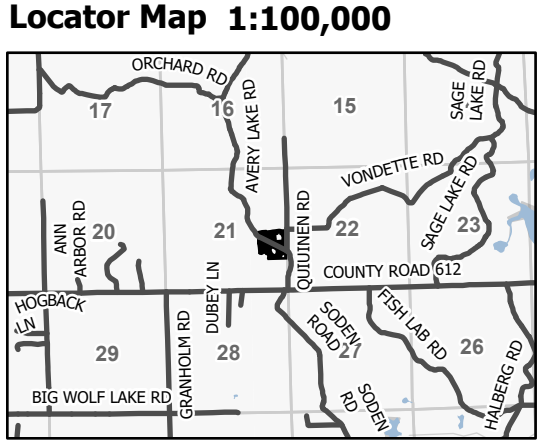
Density	
0 = Non Stocked	5 = Pole Timber Medium
1 = Seedling Sapling Poor	6 = Pole Timber Well
2 = Seedling Sapling Medium	7 = Saw Timber Poor
3 = Seedling Sapling Well	8 = Saw Timber Medium
4 = Pole Timber Poor	9 = Saw Timber Well

Payment Unit Number	Acres
1	15.5
2	17.6

Quiuinen Rd Red Pine

33.2 Acres

Compartment 10



Legend

- Payment Unit
- Retention Areas
- Against State (Red)
- Against State (Unpainted)
- Private Line (Blue)
- Pipeline
- Forest Access Route
- Government Gravel/Dirt
- Private Gravel/Dirt
- Recreation Trails
- Field Grade Corner

Trail_Type

- Motorcycle Trails
- Snowmobile Trails

Use QR Code to open Map in App

