



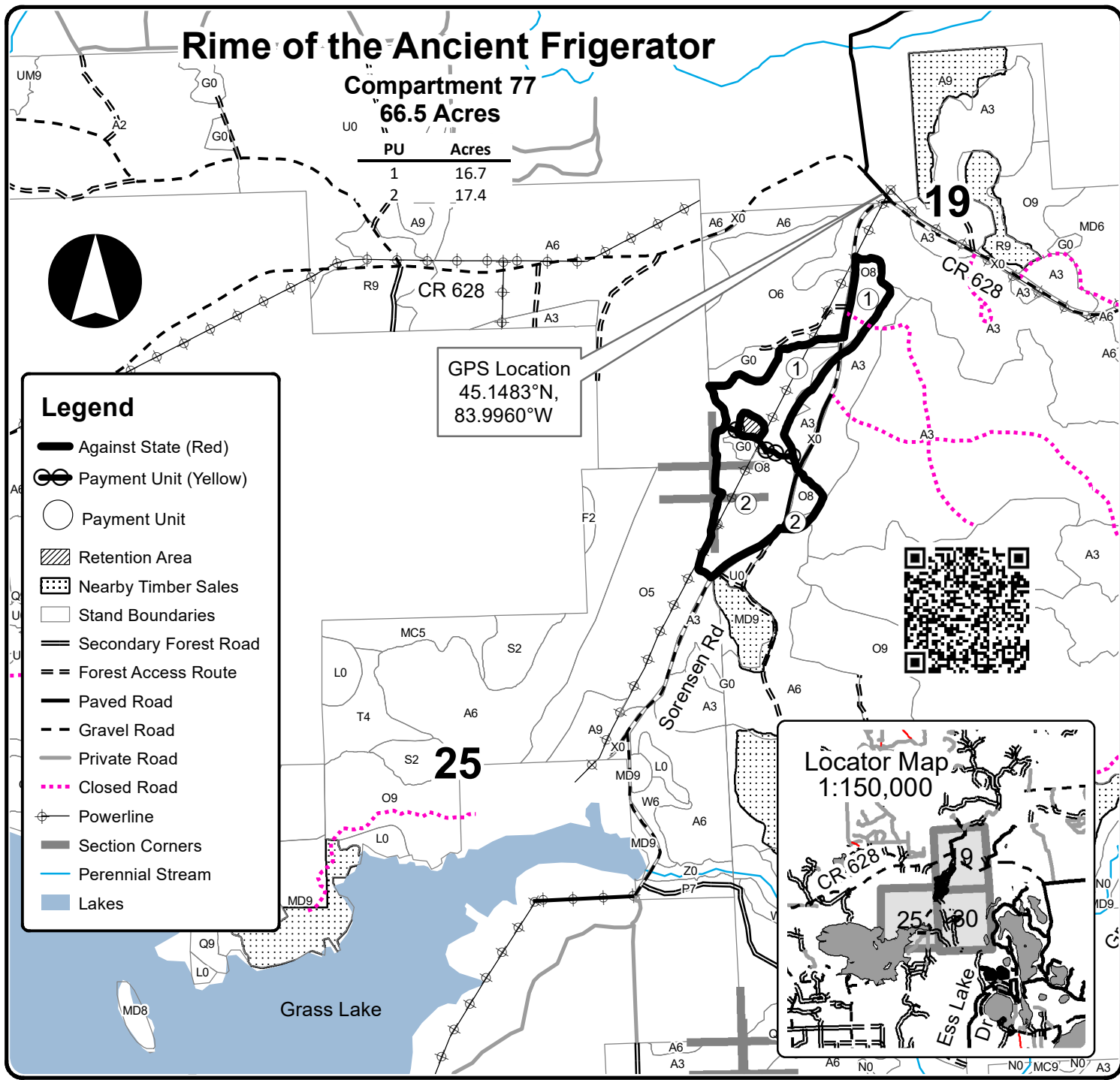
TIMBER SALE MAP

This information provided by authority of Part 525, 1994 PA 451, as amended.

Sale Number	Year
54 - 010	22

Forest Management Unit Atlanta	County Montmorency	Mapped By Natzke	Date 09/27/2022	Page 1	of 2
Township 32N	Range 04E	Cruised By Natzke	Scale 1:15,840		
Section(s) and Subdivision(s) Sec. 19 NESW, S2SW, Sec. 30 N2NW, Sec. 31 SENE, NESE, Sec. 32 SWNW, R 03E Sec. 25 NENE					

Cover Type				Density	
A = Aspen	H = Hemlock	N = Marsh	U = Upland Brush	0 = Non Stocked	5 = Pole Timber Medium
B = Paper Birch	J = Jack Pine	O = Oak	UM = Upland Mixed	1 = Seedling Sapling Poor	6 = Pole Timber Well
C = Cedar	L = Lowland Brush	P = Lowland Poplar	V = Bog or Marsh	2 = Seedling Sapling Medium	7 = Saw Timber Poor
D = Treed Bog	LM = Lowland Mixed	Q = Mixed Swamp Conifer	W = White Pine	3 = Seedling Sapling Well	8 = Saw Timber Medium
E = Swamp Hdwoods	M = Mpl, Bch, Brch	R = Red Pine	X = Non Stocked	4 = Pole Timber Poor	9 = Saw Timber Well
F = Spruce Fir	MC = Mixed Conifer	S = Black Spruce	Z = Water		
G = Grass	MD = Mixed Deciduous	T = Tamarack			



Legend

- Against State (Red)
- Payment Unit (Yellow)
- Payment Unit
- Retention Area
- Nearby Timber Sales
- Stand Boundaries
- Secondary Forest Road
- Forest Access Route
- Paved Road
- Gravel Road
- Private Road
- Closed Road
- Powerline
- Section Corners
- Perennial Stream
- Lakes

