



# TIMBER SALE MAP

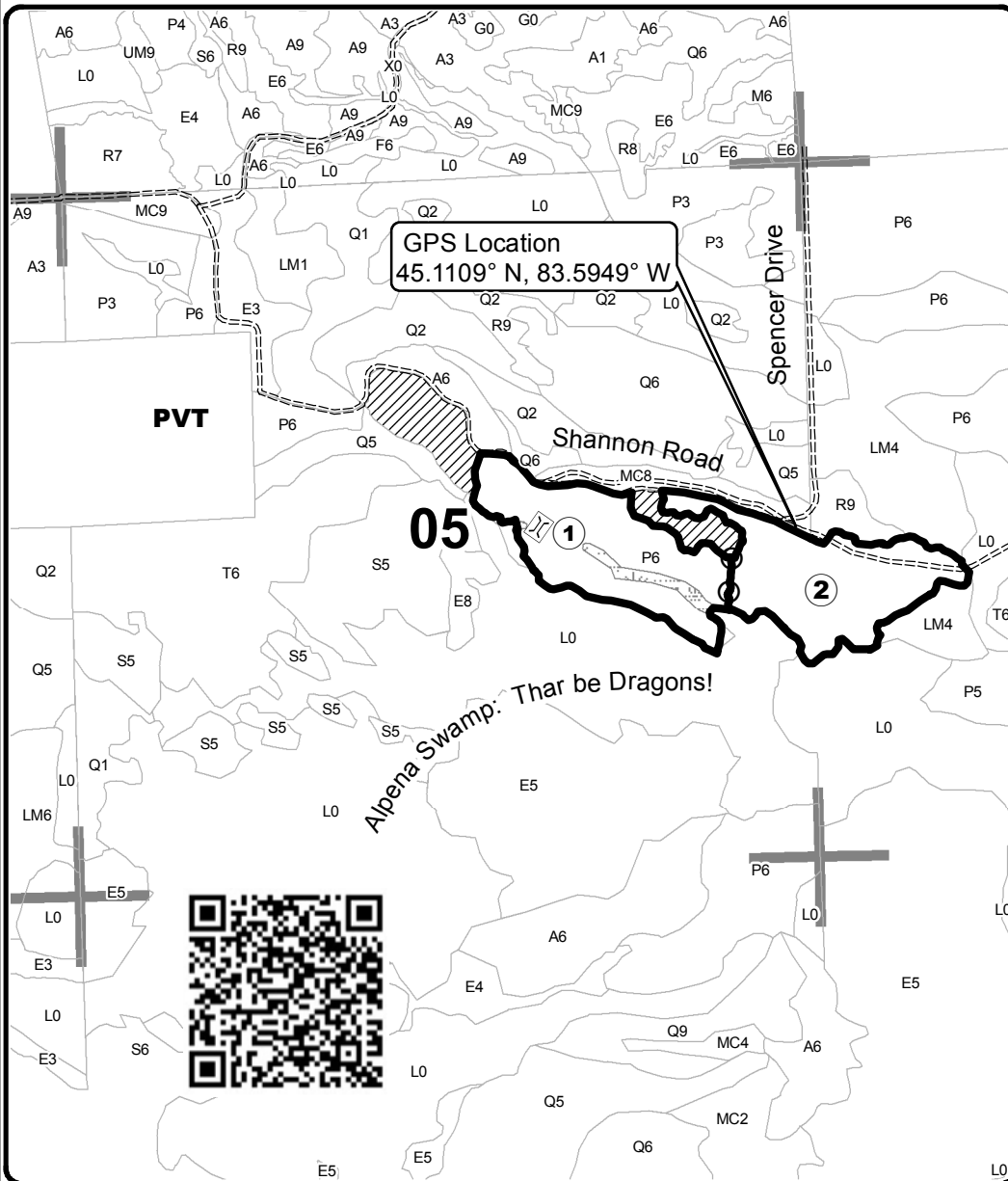
This information provided by authority of Part 525, 1994 PA 451, as amended.

Forest Management Unit <b>Atlanta</b>		County <b>Alpena</b>	Mapped By <b>Natzke</b>	Date <b>08/25/2019</b>	Page <b>1</b>	of <b>2</b>
Township <b>31N</b>	Range <b>07W</b>	Section(s) and Subdivision(s) <b>S.4: NWSW, S.5: S2NE, N2SE, S.17: SWNW, S.18: SENE</b>		Scale <b>1:15,840</b>		
<b>Cover Type</b>				<b>Density</b>		
A = Aspen B = Paper Birch C = Cedar D = Treed Bog E = Swamp Hdwoods F = Spruce Fir G = Grass	H = Hemlock J = Jack Pine L = Lowland Brush LM = Lowland Mixed M = Mpl, Bch, Brch MC = Mixed Conifer MD = Mixed Deciduous	N = Marsh O = Oak P = Lowland Poplar Q = Mixed Swamp Conifer R = Red Pine S = Black Spruce T = Tamarack	U = Upland Brush UM = Upland Mixed V = Bog or Marsh W = White Pine X = Non Stocked Z = Water	0 = Non Stocked 1 = Seedling Sapling Poor 2 = Seedling Sapling Medium 3 = Seedling Sapling Well 4 = Pole Timber Poor	5 = Pole Timber Medium 6 = Pole Timber Well 7 = Saw Timber Poor 8 = Saw Timber Medium 9 = Saw Timber Well	

PU	Acres
1	24.3
2	25.2
3	20.0

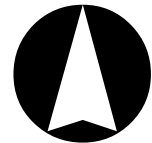
## Shannon 'Iggins Popple

Compartment 101  
69.5 Acres



### Legend

- Against State (Red)
- Payment Unit (Yellow)
- Retention Area
- Unpaved Roads
- Wetland Swale
- Stand Boundaries
- Payment Unit Number
- Swale Crossing
- Section Corners



Locator Map  
1:150,000

